

Teaching and Learning

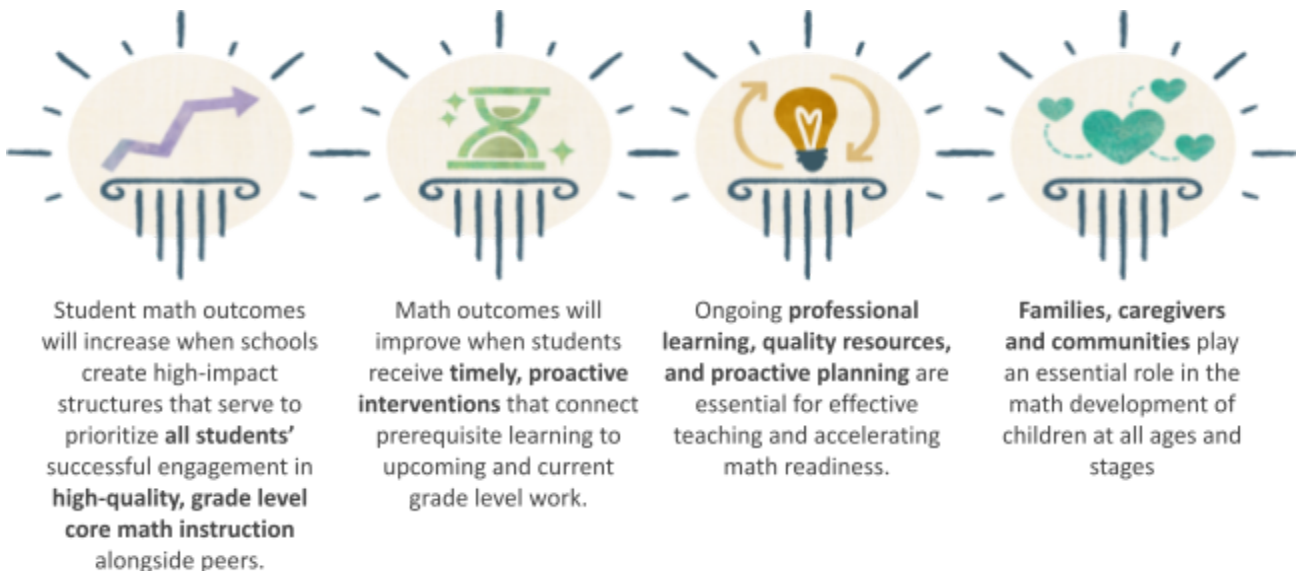
Math Leader Toolkit

Purpose

Instructional leadership is a model of system or school leadership in which leaders collaborate with teachers to provide support and guidance in establishing best practices in teaching. Part of being an instructional leader is to ensure that teachers have access to and understanding of the resources needed to impact student achievement. This toolkit enables leaders to internalize effective math practices to continue to have positive student outcomes. The Math Leader Toolkit is a comprehensive resource designed to support educators serving in an instructional leadership role by promoting excellence in math instruction through reflective practice. The Guidance included in the toolkit is aligned with the [Louisiana Educator Advancement Development System \(LEADS\)](#) rubric and includes a variety of resources to empower math leaders. The Math Leader Toolkit will be continually updated with information to assist in leading mathematics education.

Louisiana Math Pillars

All Louisiana students will have improved math outcomes when the four pillars of high-quality mathematics instruction designed for accelerating learning are effectively implemented at the school, system, and state levels.



The [Louisiana Math Comprehensive Plan](#) outlines all tools and resources that will impact math instruction.

Louisiana Educator Advancement Development System (LEADS)

The [Louisiana Educator Advancement Development System](#)(LEADS) is named consistently with the vision of growth for Louisiana’s educators and students. The Louisiana Department of Education and NIET collaborated to develop the Math Leader Toolkit to support teachers and leaders in transitioning to [LEADS](#). The toolkit includes resources for teachers, coaches, and leaders; all of these tools are aligned with the [Louisiana Educator Rubric](#) and the [Louisiana Leader Rubric](#). The LEADS system ensures the provision of useful, timely, and actionable feedback for improvement in the school systems. The changes to the evaluation system will allow feedback and coaching to be an integral part of the evaluation process. For more information about the educator rubrics, please see the [Evaluation Learning Year Frequently Asked Questions](#).

Diverse Learners

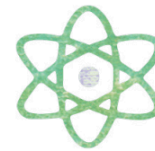
The Louisiana Department of Education [Special Education Playbook for School and System Leaders](#) identifies three key instructional best practices as the central drivers of all support provided to students who struggle.



**FOCUS
ON CORE
INSTRUCTION**



**EXTRA
TIME TO
LEARN**



**CONTENT
STRONG
TEACHERS**

Contents of the Toolkit

- [Student Work Analysis Process](#): A tool to encourage teachers’ reflection on their instructional practices and the impact of those practices on student learning.
- [Student Work Analysis Coaching Guidance](#): A resource to support coaches in supporting teachers through the Student Work Analysis Tool. It uses the same approach as the student work analysis tool but with specific support for master teachers and instructional coaches for coaching and supporting teachers in math.
- [Content-Specific Feedback Framework for Leaders](#): A resource to provide guidance to support school leaders through the student work analysis process implemented by teachers, coaches, and other instructional staff.
- [Acceleration Program Appraisal](#): A tool for school leaders to determine whether their academic program is aligned to high-quality instructional materials with built-in acceleration tools and time for math intervention during the school day.

Updated February 3, 2025