

Background

Act 522 (2016) requires the Louisiana Department of Education (LDOE) to collect data on the use of seclusion and restraint for students with disabilities and produce an annual report that includes:

- the number of incidents of physical restraint disaggregated by school system, student age, race, ethnicity, gender, and student disability classification;
- the number of incidents of seclusion disaggregated by school system, student age, race, ethnicity, gender, and student disability classification; and
- a list of school systems and charter schools that complied with the reporting requirements.

Data in this report was collected in the Special Education Reporting System (SER) and is specific to students with disabilities receiving special education services through the provisions of the Individuals with Disabilities Education Act (IDEA). The data collection period was from the 2015-2016 school year.

Results

During the 2015-2016 school year, 28 school systems submitted incidents of seclusion and restraint. These submissions include 1,180 incidents of seclusion and restraint involving 206 students with disabilities across the state. In total 0.24% of the total population of students with disabilities were reported as involved in incidents of seclusion and restraint.

Table 1. Seclusion / Restraint Overview by LEA, 2015-2016 School Year

LEA Code	LEA Name	Total Incidents	Total Students	Total IEPs	Students Secluded/Restrained as % of Total IEPs
001	Acadia Parish	0	0	831	0.00%
002	Allen Parish	5	2	430	0.47%
003	Ascension Parish	31	5	2,174	0.23%
004	Assumption Parish	0	0	450	0.00%
005	Avoyelles Parish	14	5	525	0.95%
006	Beauregard Parish	0	0	845	0.00%
007	Bienville Parish	0	0	240	0.00%
008	Bossier Parish	7	4	2,795	0.14%
009	Caddo Parish	39	12	4,173	0.29%
010	Calcasieu Parish	212	36	4,662	0.77%
011	Caldwell Parish	0	0	285	0.00%
012	Cameron Parish	0	0	189	0.00%
013	Catahoula Parish	0	0	178	0.00%
014	Claiborne Parish	0	0	355	0.00%
015	Concordia Parish	0	0	377	0.00%
016	DeSoto Parish	0	0	501	0.00%
017	East Baton Rouge Parish	0	0	4,240	0.00%
018	East Carroll Parish	0	0	114	0.00%

**Use of Seclusion and Restraint for Students with Disabilities
2015-2016 School Year Data Report**

LEA Code	LEA Name	Total Incidents	Total Students	Total IEPs	Students Secluded/ Restrained as % of Total IEPs
019	East Feliciana Parish	0	0	227	0.00%
020	Evangeline Parish	0	0	759	0.00%
021	Franklin Parish	0	0	439	0.00%
022	Grant Parish	2	1	139	0.72%
023	Iberia Parish	2	2	1,591	0.13%
024	Iberville Parish	0	0	620	0.00%
025	Jackson Parish	1	1	202	0.50%
026	Jefferson Parish	0	0	5,731	0.00%
027	Jefferson Davis Parish	0	0	835	0.00%
028	Lafayette Parish	2	2	2,532	0.08%
029	Lafourche Parish	30	7	1,040	0.67%
030	LaSalle Parish	0	0	245	0.00%
031	Lincoln Parish	0	0	979	0.00%
032	Livingston Parish	0	0	3,217	0.00%
033	Madison Parish	0	0	151	0.00%
034	Morehouse Parish	1	1	608	0.16%
035	Natchitoches Parish	0	0	716	0.00%
036	Orleans Parish	4	2	1,253	0.16%
037	Ouachita Parish	0	0	2,394	0.00%
038	Plaquemines Parish	0	0	475	0.00%
039	Pointe Coupee Parish	0	0	369	0.00%
040	Rapides Parish	157	38	2,701	1.41%
041	Red River Parish	0	0	177	0.00%
042	Richland Parish	0	0	349	0.00%
043	Sabine Parish	0	0	534	0.00%
044	St. Bernard Parish	2	1	818	0.12%
045	St. Charles Parish	204	11	929	1.18%
046	St. Helena Parish	0	0	174	0.00%
047	St. James Parish	0	0	508	0.00%
048	St. John the Baptist Parish	3	1	737	0.14%
049	St. Landry Parish	0	0	1,748	0.00%
050	St. Martin Parish	0	0	868	0.00%
051	St. Mary Parish	0	0	1,238	0.00%
052	St. Tammany Parish	62	30	6,194	0.48%
053	Tangipahoa Parish	0	0	2,247	0.00%
054	Tensas Parish	0	0	111	0.00%

LEA Code	LEA Name	Total Incidents	Total Students	Total IEPs	Students Secluded/ Restrained as % of Total IEPs
055	Terrebonne Parish	0	0	1,867	0.00%
056	Union Parish	0	0	318	0.00%
057	Vermilion Parish	0	0	1,127	0.00%
058	Vernon Parish	0	0	1,091	0.00%
059	Washington Parish	0	0	880	0.00%
060	Webster Parish	0	0	811	0.00%
061	West Baton Rouge Parish	0	0	409	0.00%
062	West Carroll Parish	0	0	271	0.00%
063	West Feliciana Parish	0	0	284	0.00%
064	Winn Parish	2	1	354	0.28%
065	City of Monroe School District	0	0	1,421	0.00%
066	City of Bogalusa School District	6	2	295	0.68%
067	Zachary Community School District	0	0	506	0.00%
068	City of Baker School District	0	0	163	0.00%
069	Central Community School District	0	0	313	0.00%
101	Special School District	4	2	266	0.75%
300	RSD-New Beginnings Schools Foundation	0	0	238	0.00%
304	LA Schools for the Deaf and Visually Impaired	0	0	191	0.00%
306	Louisiana Special Education Center	0	0	38	0.00%
321	New Vision Learning Academy	0	0	21	0.00%
329	V. B. Glencoe Charter School	0	0	41	0.00%
331	International School of Louisiana	0	0	55	0.00%
333	Avoyelles Public Charter School	0	0	31	0.00%
334	New Orleans Center for Creative Arts	0	0	1	0.00%
336	Delhi Charter School	0	0	66	0.00%
337	Belle Chasse Academy, Inc.	0	0	83	0.00%
339	Milestone Academy	0	0	51	0.00%
340	The MAX Charter School	0	0	29	0.00%
341	D'Arbonne Woods Charter School	0	0	62	0.00%
343	Community School for Apprenticeship Learning, Inc.	0	0	24	0.00%
344	Voices for International Business & Education	0	0	45	0.00%
345	Louisiana Connections Academy	0	0	244	0.00%
346	Lake Charles Charter Academy Foundation, Inc.	0	0	94	0.00%
347	Lycee Francais de la Nouvelle-Orleans	0	0	54	0.00%
348	New Orleans Military/Maritime Academy	0	0	76	0.00%
360	RSD-Educators for Quality Alternatives	0	0	43	0.00%

**Use of Seclusion and Restraint for Students with Disabilities
2015-2016 School Year Data Report**

LEA Code	LEA Name	Total Incidents	Total Students	Total IEPs	Students Secluded/ Restrained as % of Total IEPs
361	RSD-Crescent Leadership Academy	0	0	12	0.00%
363	RSD-Crescent City Schools	33	9	184	4.89%
364	RSD-Community Leaders Advocating Student Success	0	0	83	0.00%
367	RSD-Spirit of Excellence Academy	0	0	55	0.00%
368	RSD-Morris Jeff Community School	57	1	96	1.04%
369	RSD-ReNEW-Reinventing Education, Inc.	0	0	804	0.00%
371	Shreveport Charter School, Inc.	0	0	59	0.00%
373	RSD-Arise Academy	0	0	125	0.00%
374	RSD-Success Preparatory Academy	160	1	87	1.15%
381	RSD-Akili Academy of New Orleans	5	4	97	4.12%
382	RSD-Collegiate Academies	0	0	274	0.00%
385	RSD-New Orleans College Preparatory Academies	0	0	220	0.00%
389	RSD-Pelican Educational Foundation	0	0	59	0.00%
390	RSD-Dryades YMCA	0	0	43	0.00%
393	RSD-Choice Foundation	0	0	261	0.00%
395	RSD-Algiers Charter Schools Association (ACSA)	22	3	434	0.69%
397	RSD-Institute for Academic Excellence	0	0	37	0.00%
398	RSD-Knowledge is Power Program (KIPP) N.O.	24	16	630	2.54%
399	RSD-FirstLine Schools, Inc.	89	6	476	1.26%
3A5	RSD-Better Choice Foundation	0	0	63	0.00%
3AP	RSD-Celerity Schools Louisiana, Inc.	0	0	85	0.00%
3AQ	RSD-Baton Rouge University Preparatory School Inc.	0	0	12	0.00%
3B9	RSD-Friendship Louisiana, Inc.	0	0	51	0.00%
W1A	JCFA-East	0	0	29	0.00%
W1B	Advantage Charter Academy	0	0	36	0.00%
W2A	Tallulah Charter School	0	0	17	0.00%
W2B	Willow Charter Academy	0	0	57	0.00%
W31	Dr. Martin Luther King Charter School for Sci/Tech	0	0	83	0.00%
W32	Joseph A. Craig Charter School	0	0	24	0.00%
W3A	Baton Rouge Charter Academy at Mid-City	0	0	57	0.00%
W3B	Iberville Charter Academy	0	0	35	0.00%
W4A	Delta Charter Group	0	0	44	0.00%
W4B	Lake Charles College Prep	0	0	51	0.00%
W5B	Northeast Claiborne Charter	0	0	10	0.00%
W6A	Northshore Charter School, Inc.	0	0	163	0.00%
W6B	Acadiana Renaissance Charter Academy	0	0	47	0.00%

Use of Seclusion and Restraint for Students with Disabilities
2015-2016 School Year Data Report

LEA Code	LEA Name	Total Incidents	Total Students	Total IEPs	Students Secluded/ Restrained as % of Total IEPs
W7A	Louisiana Key Academy	0	0	42	0.00%
W7B	Lafayette Charter Foundation	0	0	53	0.00%
W8A	Impact Charter Elementary	0	0	22	0.00%
W9A	Vision Academy	0	0	22	0.00%
WAG	Louisiana Virtual Charter Academy	0	0	233	0.00%
WAK	Southwest Louisiana Charter Academy	0	0	84	0.00%
WAL	JS Clark Leadership Academy	0	0	16	0.00%
WAR	Tangipahoa Charter School Association	0	0	39	0.00%
WAU	GEO Prep Academy of Greater Baton Rouge	0	0	30	0.00%
WAV	RSD- Democracy Prep Louisiana Charter School	0	0	36	0.00%
WAW	RSD-Baton Rouge Bridge Academy, Inc.	0	0	2	0.00%
WAX	RSD-Baton Rouge College Preparatory, Inc.	0	0	17	0.00%
	Total	1,180	206 ¹	84,578 ²	0.24%

¹ Incidents of seclusion / restraint were counted one time per student. If a student was restrained and secluded, that student is represented once.

² IEPs closed in the 2015-2016 school year excluded. In the 2015-2016 school year 84,611 students with disabilities had active IEPs.

The following charts show state level data disaggregated by age, race, ethnicity, gender, and student disability classification. Each chart shows the number of students involved compared to the total universe of students with disabilities in the particular group. Disaggregated data on the LEA level is available in the appendix of this report.

Chart 1. Total Incidents of Seclusion/Restraint by Disability, 2015-2016 School Year

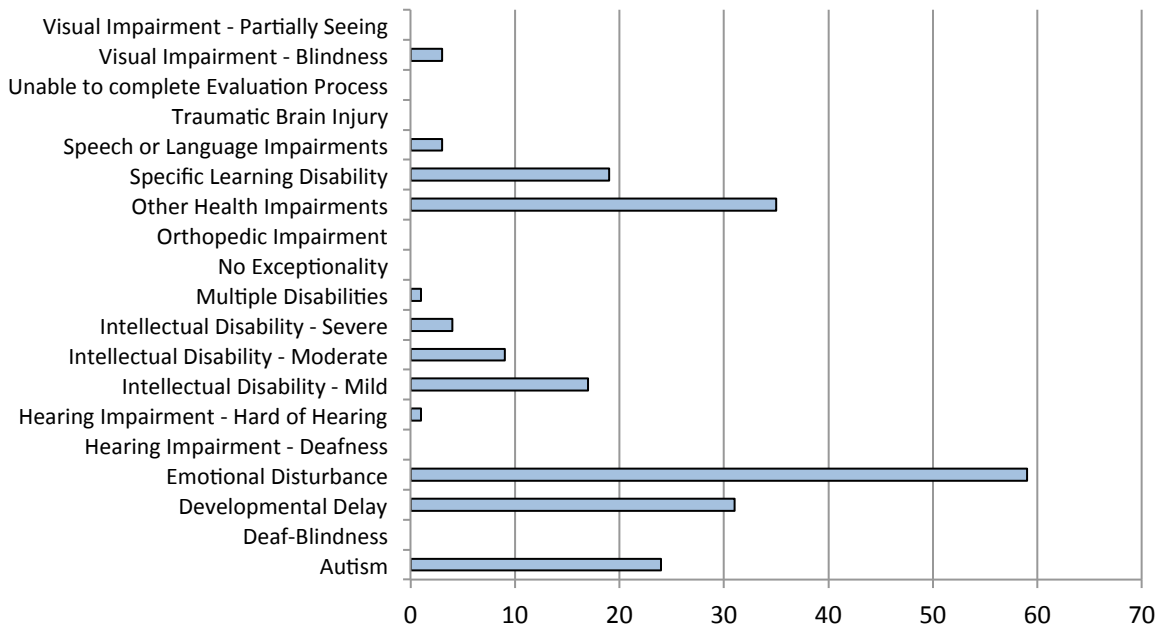


Table 2. Seclusion/Restraint Count of Incidents & Students by Primary Exceptionality Statewide Summary, 2015-2016 School Year

Primary Exceptionality	Total Students	Total Incidents	Percentage of Students With Disability and Incident
Autism	5,445	24	0.4408%
Deaf-Blindness	2	0	0.0000%
Developmental Delay	11,671	31	0.2656%
Emotional Disturbance	1,847	59	3.1944%
Hearing Impairment - Deafness	357	0	0.0000%
Hearing Impairment - Hard of Hearing	862	1	0.1160%
Intellectual Disability - Mild	4,739	17	0.3587%
Intellectual Disability - Moderate	2,443	9	0.3684%
Intellectual Disability - Severe	376	4	1.0638%
Multiple Disabilities	1,117	1	0.0895%
No Exceptionality	172	0	0.0000%
Orthopedic Impairment	1,109	0	0.0000%
Other Health Impairments	11,093	35	0.3155%

Primary Exceptionality	Total Students	Total Incidents	Percentage of Students With Disability and Incident
Specific Learning Disability	25,596	19	0.0742%
Speech or Language Impairments	16,949	3	0.0177%
Traumatic Brain Injury	231	0	0.0000%
Unable to complete Evaluation Process	21	0	0.0000%
Visual Impairment - Blindness	256	3	1.1719%
Visual Impairment - Partially Seeing	271	0	0.0000%
Unknown	54	0	0.0000%
Total	84,611	206	0.2435%

Chart 2. Total Incidents of Seclusion/Restraint by Age, 2015-2016 School Year

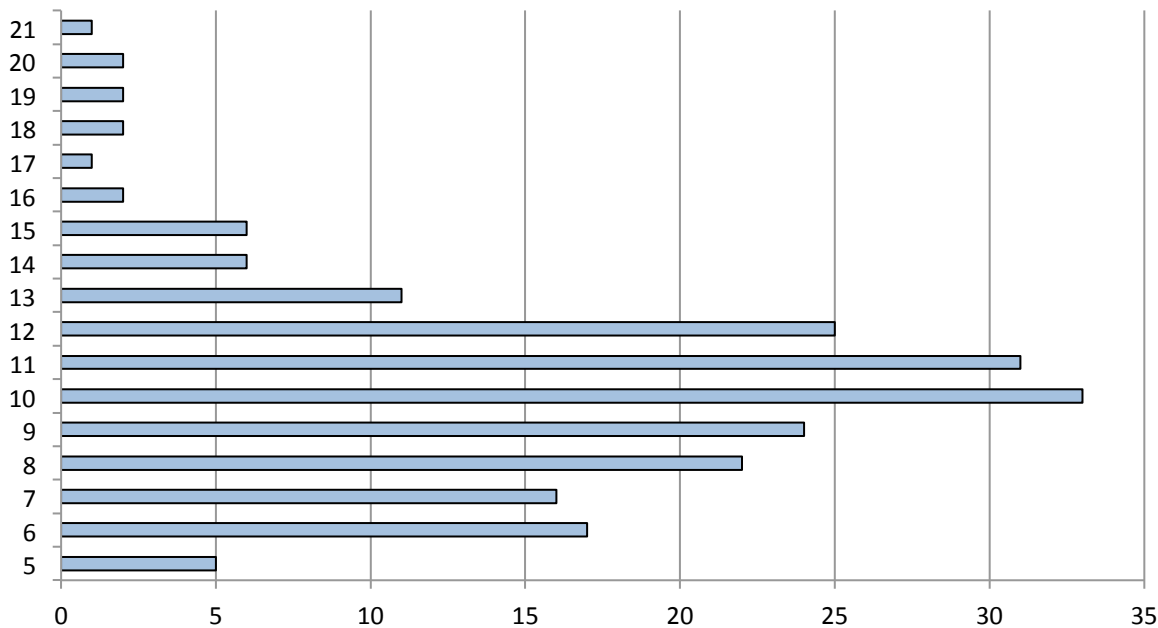


Table 3. Seclusion/Restraint Count of Incidents & Students by Age Statewide Summary, 2015-2016 School Year

Age	IEP Student Count	Incident Student Count	Incident Percentage
1	1	0	0.0000%
2	26	0	0.0000%
3	1,895	0	0.0000%
4	3,402	0	0.0000%
5	4,950	6	0.1212%
6	5,705	16	0.2805%

7	6,348	16	0.2520%
8	6,564	23	0.3504%
9	6,718	23	0.3424%
10	6,427	33	0.5135%
11	6,302	32	0.5078%
12	5,816	24	0.4127%
13	5,639	11	0.1951%
14	5,453	6	0.1100%
15	5,318	6	0.1128%
16	5,061	2	0.0395%
17	4,432	1	0.0226%
18	2,800	2	0.0714%
19	1,075	2	0.1860%
20	376	2	0.5319%
21	234	1	0.4274%
22	32	0	0.0000%
23	14	0	0.0000%
24	19	0	0.0000%
25	4	0	0.0000%
Total	84,611	206	0.2435%

Chart 3, 4. Total Incidents of Seclusion/Restraint by Race/Ethnicity, and Gender, 2015-2016 School Year

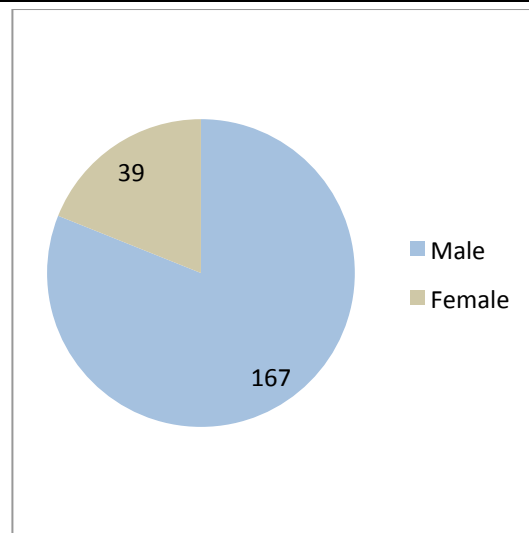
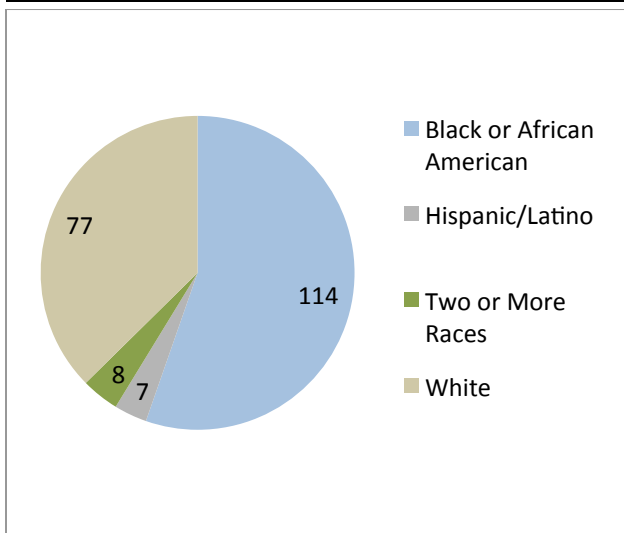


Table 4. Seclusion/Restraint Count of Incidents & Students by Race/Ethnicity Statewide Summary, 2015-2016 School Year

Race/Ethnicity	IEP Student Count	Incident Student Count	Incident Percentage
American Indian or Alaskan Native	560	0	0.0000%
Asian	619	0	0.0000%
Black or African American	41,629	114	0.2738%
Hispanic/Latino	3,425	7	0.2044%
Native Hawaiian or Pacific Islander	53	0	0.0000%
Two or More Races	1,619	8	0.4941%
White	36,706	77	0.2098%
Total	84,611	206	0.2435%

Table 5. Seclusion/Restraint Count of Incidents & Students by Gender Statewide Summary, 2015-2016 School Year

Gender	IEP Student Count	Incident Student Count	Incident Percentage
Female	26,995	39	0.1445%
Male	57,616	167	0.2899%
Total	84,611	206	0.2435%

APPENDIX – SECLUSION/RESTRAINT TABLES

The following tables show seclusion/restraint data disaggregated by various variables.

The Louisiana Department of Education has modified and/or suppressed data reported to protect the privacy of students in compliance with the Family Educational Rights and Privacy Act (FERPA) codified at 20 U.S.C. 1232g. The strategies used to protect privacy vary and may include rounding or other techniques but do not substantially affect the general usefulness of the data. Because of the privacy protections, numerical and percentage totals may not add precisely to the sum of the row or column to which the total refers.

Table 1. Seclusion & Restraint Count of Incidents & Students by School Site, 2015-2016 School Year

Table 2. Seclusion/Restraint Count of Incidents & Students by Age, 2015-2016 School Year

Table 3. Seclusion/Restraint Count of Incidents & Students by Primary Exceptionality, 2015-2016 School Year

Table 4. Seclusion/Restraint Count of Incidents & Students by Race/Ethnicity, 2015-2016 School Year

Table 5. Seclusion/Restraint Count of Incidents & Students by Gender, 2015-2016 School Year

Table 1. Seclusion & Restraint Count of Incidents & Students by School Site, 2015-2016 School Year

LEA Code	LEA Name	Seclusion/ Restraint	School Name	Total Incidents	Total Students
002	Allen Parish	Restraint	Fairview High School	2	1
002	Allen Parish	Restraint	Oberlin Elementary School	3	1
003	Ascension Parish	Restraint	G. W. Carver Primary School	4	1
005	Avoyelles Parish	Restraint	Avoyelles High School	2	1
005	Avoyelles Parish	Restraint	Bunkie Elementary School	4	1
005	Avoyelles Parish	Restraint	Marksville Elementary School	3	2
005	Avoyelles Parish	Restraint	Marksville High School	4	1
008	Bossier Parish	Restraint	Cope Middle School	3	1
008	Bossier Parish	Restraint	Haughton Middle School	1	1
008	Bossier Parish	Restraint	Waller Elementary School	3	2
009	Caddo Parish	Restraint	Alexander Learning Center	20	5
010	Calcasieu Parish	Restraint	College Oaks Elementary School	1	1
010	Calcasieu Parish	Restraint	DeQuincy Elementary School	6	1
010	Calcasieu Parish	Restraint	E. K. Key Elementary School	4	2
010	Calcasieu Parish	Restraint	LeBleu Settlement Elementary School	8	1
010	Calcasieu Parish	Restraint	M. J. Kaufman Elementary School	1	1
010	Calcasieu Parish	Restraint	Moss Bluff Elementary School	1	1
010	Calcasieu Parish	Restraint	Prien Lake Elementary School	1	1
022	Grant Parish	Restraint	Colfax Elementary School	2	1
023	Iberia Parish	Restraint	Daspit Road Elementary School	1	1
023	Iberia Parish	Restraint	Iberia Middle School	1	1
025	Jackson Parish	Restraint	Jonesboro-Hodge Middle School	1	1
028	Lafayette Parish	Restraint	N. P. Moss Preparatory Academy	1	1
029	Lafourche Parish	Restraint	Bayou Blue Elementary School	1	1
029	Lafourche Parish	Restraint	South Lafourche High School	1	1
029	Lafourche Parish	Restraint	South Larose Elementary School	1	1
029	Lafourche Parish	Restraint	South Thibodaux Elementary School	3	1
029	Lafourche Parish	Restraint	St. Charles Elementary School	6	1
029	Lafourche Parish	Restraint	W.S. Lafargue Elementary School	16	2
034	Morehouse Parish	Restraint	Pine Grove Elementary School	1	1
036	Orleans Parish	Restraint	Edward Hynes Charter School	3	1
040	Rapides Parish	Restraint	Alexandria Middle Magnet School	2	1
040	Rapides Parish	Restraint	Bolton High School	2	2
040	Rapides Parish	Restraint	D.F. Huddle Elementary	4	1
040	Rapides Parish	Restraint	J.B. Nachman Elementary School	2	2
040	Rapides Parish	Restraint	J.I. Barron Sr. Elementary School	33	4
040	Rapides Parish	Restraint	L.S. Rugg Elementary School	1	1
040	Rapides Parish	Restraint	Lessie Moore Elementary School	31	2

**Use of Seclusion and Restraint for Students with Disabilities
2015-2016 School Year Data Report**

LEA Code	LEA Name	Seclusion/ Restraint	School Name	Total Incidents	Total Students
040	Rapides Parish	Restraint	Mabel Brasher Elementary School	3	1
040	Rapides Parish	Restraint	North Bayou Rapides Elementary	14	6
040	Rapides Parish	Restraint	Paradise Elementary School	22	5
040	Rapides Parish	Restraint	Pineville Elementary School	9	3
040	Rapides Parish	Restraint	Pineville High School	4	1
040	Rapides Parish	Restraint	Rapides Training Academy	30	9
045	St. Charles Parish	Restraint	Allemands Elementary School	11	2
045	St. Charles Parish	Restraint	Ethel Schoeffner Elementary School	1	1
045	St. Charles Parish	Restraint	Harry M. Hurst Middle School	105	1
045	St. Charles Parish	Restraint	Lakewood Elementary School	24	3
045	St. Charles Parish	Restraint	R.J. Vial Elementary School	53	1
045	St. Charles Parish	Restraint	R.K. Smith Middle School	1	1
045	St. Charles Parish	Restraint	St. Rose Elementary School	9	2
048	St. John the Baptist Parish	Restraint	LaPlace Elementary School	3	1
052	St. Tammany Parish	Restraint	Bayou Lacombe Middle School	1	1
052	St. Tammany Parish	Restraint	Bonne Ecole Elementary School	2	1
052	St. Tammany Parish	Restraint	Covington Elementary School	2	1
052	St. Tammany Parish	Restraint	Florida Avenue Elementary School	1	1
052	St. Tammany Parish	Restraint	Henry Mayfield Elementary School	2	2
052	St. Tammany Parish	Restraint	Joseph B. Lancaster Elementary School	4	1
052	St. Tammany Parish	Restraint	Lake Harbor Middle School	1	1
052	St. Tammany Parish	Restraint	Little Oak Middle School	1	1
052	St. Tammany Parish	Restraint	Madisonville Junior High School	1	1
052	St. Tammany Parish	Restraint	Mandeville Elementary School	1	1
052	St. Tammany Parish	Restraint	Pontchartrain Elementary School	6	3
052	St. Tammany Parish	Restraint	Sixth Ward Elementary School	2	1
052	St. Tammany Parish	Restraint	Tchefuncte Middle School	1	1
064	Winn Parish	Restraint	Winnfield Kindergarten	2	1
066	City of Bogalusa School District	Restraint	Bogalusa High School	1	1
066	City of Bogalusa School District	Restraint	Central Elementary School	5	1
101	Special School District	Restraint	Methodist Home for Children of Greater New Orleans	4	2
363	RSD-Crescent City Schools	Restraint	Paul Habans Charter School	14	3
368	RSD-Morris Jeff Community School	Restraint	Morris Jeff Community School	11	1
374	RSD-Success Preparatory Academy	Restraint	Success Preparatory Academy	12	1
381	RSD-Akili Academy of New Orleans	Restraint	Akili Academy of New Orleans	1	1
395	RSD-Algiers Charter Schools	Restraint	Dwight D. Eisenhower Academy of	4	1

Use of Seclusion and Restraint for Students with Disabilities 2015-2016 School Year Data Report

LEA Code	LEA Name	Seclusion/ Restraint	School Name	Total Incidents	Total Students
	Association (ACSA)		Global Studies		
395	RSD-Algiers Charter Schools Association (ACSA)	Restraint	McDonogh #32 Literacy Charter School	1	1
395	RSD-Algiers Charter Schools Association (ACSA)	Restraint	William J. Fischer Accelerated Academy	2	1
398	RSD-Knowledge is Power Program (KIPP) N.O.	Restraint	KIPP Believe College Prep	1	1
398	RSD-Knowledge is Power Program (KIPP) N.O.	Restraint	KIPP Central City Academy	1	1
398	RSD-Knowledge is Power Program (KIPP) N.O.	Restraint	KIPP McDonogh 15 School for the Creative Arts	12	6
398	RSD-Knowledge is Power Program (KIPP) N.O.	Restraint	KIPP New Orleans Leadership Academy	9	8
399	RSD-FirstLine Schools, Inc.	Restraint	Langston Hughes Charter Academy	2	1
399	RSD-FirstLine Schools, Inc.	Restraint	Phillis Wheatley Community School	37	1
399	RSD-FirstLine Schools, Inc.	Restraint	Samuel J. Green Charter School	2	2
003	Ascension Parish	Seclusion	Duplessis Primary School	7	1
003	Ascension Parish	Seclusion	Pecan Grove Primary School	7	2
003	Ascension Parish	Seclusion	St. Amant Middle School	13	1
005	Avoyelles Parish	Seclusion	Marksville Elementary School	1	1
009	Caddo Parish	Seclusion	Alexander Learning Center	16	10
009	Caddo Parish	Seclusion	Arthur Circle Elementary School	2	1
009	Caddo Parish	Seclusion	Jack P. Timmons Elementary School	1	1
010	Calcasieu Parish	Seclusion	Barbe Elementary School	4	1
010	Calcasieu Parish	Seclusion	Brentwood Elementary School	5	1
010	Calcasieu Parish	Seclusion	Combre-Fondel Elementary School	39	4
010	Calcasieu Parish	Seclusion	DeQuincy Elementary School	33	1
010	Calcasieu Parish	Seclusion	DeQuincy Primary School	11	1
010	Calcasieu Parish	Seclusion	Fairview Elementary School	3	1
010	Calcasieu Parish	Seclusion	Frasch Elementary School	12	1
010	Calcasieu Parish	Seclusion	Gillis Elementary School	2	1
010	Calcasieu Parish	Seclusion	J. I. Watson Elementary School	11	2
010	Calcasieu Parish	Seclusion	John J. Johnson II Elementary School	10	3
010	Calcasieu Parish	Seclusion	M. J. Kaufman Elementary School	5	1
010	Calcasieu Parish	Seclusion	Maplewood Elementary	6	1
010	Calcasieu Parish	Seclusion	Moss Bluff Elementary School	14	2
010	Calcasieu Parish	Seclusion	Oak Park Elementary School	4	1
010	Calcasieu Parish	Seclusion	Ralph F. Wilson Elementary School	3	1
010	Calcasieu Parish	Seclusion	Richard W. Vincent Elementary School	1	1
010	Calcasieu Parish	Seclusion	St. John Elementary School	6	2
010	Calcasieu Parish	Seclusion	Vinton Elementary School	15	2

**Use of Seclusion and Restraint for Students with Disabilities
2015-2016 School Year Data Report**

LEA Code	LEA Name	Seclusion/ Restraint	School Name	Total Incidents	Total Students
010	Calcasieu Parish	Seclusion	Vinton Middle School	2	1
010	Calcasieu Parish	Seclusion	Western Heights Elementary School	4	1
028	Lafayette Parish	Seclusion	Live Oak Elementary School	1	1
029	Lafourche Parish	Seclusion	South Thibodaux Elementary School	2	1
036	Orleans Parish	Seclusion	Wilson Charter School	1	1
044	St. Bernard Parish	Seclusion	J.F. Gauthier School	2	1
052	St. Tammany Parish	Seclusion	Bayou Woods Elementary School	2	1
052	St. Tammany Parish	Seclusion	Bonne Ecole Elementary School	14	6
052	St. Tammany Parish	Seclusion	Henry Mayfield Elementary School	2	1
052	St. Tammany Parish	Seclusion	Honey Island Elementary School	2	1
052	St. Tammany Parish	Seclusion	Joseph B. Lancaster Elementary School	2	2
052	St. Tammany Parish	Seclusion	Lake Harbor Middle School	1	1
052	St. Tammany Parish	Seclusion	Madisonville Junior High School	1	1
052	St. Tammany Parish	Seclusion	Pearl River High School	1	1
052	St. Tammany Parish	Seclusion	Pontchartrain Elementary School	5	2
052	St. Tammany Parish	Seclusion	Tchefuncte Middle School	4	3
052	St. Tammany Parish	Seclusion	Woodlake Elementary School	3	2
363	RSD-Crescent City Schools	Seclusion	Harriet Tubman Charter School	15	6
363	RSD-Crescent City Schools	Seclusion	Paul Habans Charter School	4	1
368	RSD-Morris Jeff Community School	Seclusion	Morris Jeff Community School	46	1
374	RSD-Success Preparatory Academy	Seclusion	Success Preparatory Academy	148	1
381	RSD-Akili Academy of New Orleans	Seclusion	Akili Academy of New Orleans	4	3
395	RSD-Algiers Charter Schools Association (ACSA)	Seclusion	Dwight D. Eisenhower Academy of Global Studies	15	1
398	RSD-Knowledge is Power Program (KIPP) N.O.	Seclusion	KIPP Believe College Prep	1	1
399	RSD-FirstLine Schools, Inc.	Seclusion	Arthur Ashe Charter School	19	1
399	RSD-FirstLine Schools, Inc.	Seclusion	Langston Hughes Charter Academy	6	2
399	RSD-FirstLine Schools, Inc.	Seclusion	Phillis Wheatley Community School	23	1
			Total	1,180	228³

³ Incidents of seclusion / restraint were counted separately by student. If a student was secluded and restrained, that student is represented twice.

Table 2. Seclusion/Restraint Count of Incidents & Students by Age, 2015-2016 School Year

LEA Code	LEA Name	Seclusion/ Restraint	Age	Total Incidents	Total Students
002	Allen Parish	Restraint	~	~	<10
002	Allen Parish	Restraint	~	~	<10
003	Ascension Parish	Restraint	~	~	<10
003	Ascension Parish	Seclusion	~	~	<10
003	Ascension Parish	Seclusion	~	~	<10
003	Ascension Parish	Seclusion	~	~	<10
005	Avoyelles Parish	Restraint	~	~	<10
005	Avoyelles Parish	Restraint	~	~	<10
005	Avoyelles Parish	Restraint	~	~	<10
005	Avoyelles Parish	Seclusion	~	~	<10
008	Bossier Parish	Restraint	~	~	<10
008	Bossier Parish	Restraint	~	~	<10
008	Bossier Parish	Restraint	~	~	<10
009	Caddo Parish	Restraint	~	~	<10
009	Caddo Parish	Restraint	~	~	<10
009	Caddo Parish	Seclusion	~	~	<10
009	Caddo Parish	Seclusion	~	~	<10
009	Caddo Parish	Seclusion	~	~	<10
009	Caddo Parish	Seclusion	~	~	<10
009	Caddo Parish	Seclusion	~	~	<10
010	Calcasieu Parish	Restraint	~	~	<10
010	Calcasieu Parish	Restraint	~	~	<10
010	Calcasieu Parish	Restraint	~	~	<10
010	Calcasieu Parish	Restraint	~	~	<10
010	Calcasieu Parish	Restraint	~	~	<10
010	Calcasieu Parish	Seclusion	~	~	<10
010	Calcasieu Parish	Seclusion	~	~	<10
010	Calcasieu Parish	Seclusion	~	~	<10
010	Calcasieu Parish	Seclusion	~	~	<10
010	Calcasieu Parish	Seclusion	~	~	<10
010	Calcasieu Parish	Seclusion	~	~	<10
010	Calcasieu Parish	Seclusion	~	~	<10
010	Calcasieu Parish	Seclusion	~	~	<10
010	Calcasieu Parish	Seclusion	~	~	<10
022	Grant Parish	Restraint	~	~	<10
023	Iberia Parish	Restraint	~	~	<10
023	Iberia Parish	Restraint	~	~	<10
025	Jackson Parish	Restraint	~	~	<10
028	Lafayette Parish	Restraint	~	~	<10

Use of Seclusion and Restraint for Students with Disabilities
2015-2016 School Year Data Report

LEA Code	LEA Name	Seclusion/ Restraint	Age	Total Incidents	Total Students
398	RSD-Knowledge is Power Program (KIPP) N.O.	Seclusion	~	~	<10
399	RSD-FirstLine Schools, Inc.	Restraint	~	~	<10
399	RSD-FirstLine Schools, Inc.	Restraint	~	~	<10
399	RSD-FirstLine Schools, Inc.	Restraint	~	~	<10
399	RSD-FirstLine Schools, Inc.	Restraint	~	~	<10
399	RSD-FirstLine Schools, Inc.	Seclusion	~	~	<10
399	RSD-FirstLine Schools, Inc.	Seclusion	~	~	<10
399	RSD-FirstLine Schools, Inc.	Seclusion	~	~	<10
Total				1,180	228

Table 3. Seclusion/Restraint Count of Incidents & Students by Primary Exceptionality, 2015-2016 School Year

LEA Code	LEA Name	Seclusion/ Restraint	Primary Exceptionality	Total Incidents	Total Students
002	Allen Parish	Restraint	~	~	<10
002	Allen Parish	Restraint	~	~	<10
003	Ascension Parish	Restraint	~	~	<10
003	Ascension Parish	Seclusion	~	~	<10
003	Ascension Parish	Seclusion	~	~	<10
003	Ascension Parish	Seclusion	~	~	<10
003	Ascension Parish	Seclusion	~	~	<10
005	Avoyelles Parish	Restraint	~	~	<10
005	Avoyelles Parish	Restraint	~	~	<10
005	Avoyelles Parish	Restraint	~	~	<10
005	Avoyelles Parish	Restraint	~	~	<10
005	Avoyelles Parish	Restraint	~	~	<10
005	Avoyelles Parish	Seclusion	~	~	<10
008	Bossier Parish	Restraint	~	~	<10
008	Bossier Parish	Restraint	~	~	<10
008	Bossier Parish	Restraint	~	~	<10
009	Caddo Parish	Restraint	~	~	<10
009	Caddo Parish	Restraint	~	~	<10
009	Caddo Parish	Restraint	~	~	<10
009	Caddo Parish	Seclusion	~	~	<10
009	Caddo Parish	Seclusion	~	~	<10
009	Caddo Parish	Seclusion	~	~	<10
009	Caddo Parish	Seclusion	~	~	<10
009	Caddo Parish	Seclusion	~	~	<10
010	Calcasieu Parish	Restraint	~	~	<10
010	Calcasieu Parish	Restraint	~	~	<10
010	Calcasieu Parish	Restraint	~	~	<10
010	Calcasieu Parish	Restraint	~	~	<10
010	Calcasieu Parish	Restraint	~	~	<10
010	Calcasieu Parish	Seclusion	~	~	<10
010	Calcasieu Parish	Seclusion	Emotional Disturbance	70	13
010	Calcasieu Parish	Seclusion	~	~	<10
010	Calcasieu Parish	Seclusion	~	~	<10
010	Calcasieu Parish	Seclusion	~	~	<10
022	Grant Parish	Restraint	~	~	<10
023	Iberia Parish	Restraint	~	~	<10
023	Iberia Parish	Restraint	~	~	<10
025	Jackson Parish	Restraint	~	~	<10
028	Lafayette Parish	Restraint	~	~	<10

**Use of Seclusion and Restraint for Students with Disabilities
2015-2016 School Year Data Report**

LEA Code	LEA Name	Seclusion/ Restraint	Primary Exceptionality	Total Incidents	Total Students
028	Lafayette Parish	Seclusion	~	~	<10
029	Lafourche Parish	Restraint	~	~	<10
029	Lafourche Parish	Restraint	~	~	<10
029	Lafourche Parish	Restraint	~	~	<10
029	Lafourche Parish	Seclusion	~	~	<10
034	Morehouse Parish	Restraint	~	~	<10
036	Orleans Parish	Restraint	~	~	<10
036	Orleans Parish	Seclusion	~	~	<10
040	Rapides Parish	Restraint	~	~	<10
040	Rapides Parish	Restraint	Developmental Delay	82	13
040	Rapides Parish	Restraint	~	~	<10
040	Rapides Parish	Restraint	~	~	<10
040	Rapides Parish	Restraint	~	~	<10
040	Rapides Parish	Restraint	~	~	<10
040	Rapides Parish	Restraint	~	~	<10
040	Rapides Parish	Restraint	~	~	<10
044	St. Bernard Parish	Seclusion	~	~	<10
045	St. Charles Parish	Restraint	~	~	<10
045	St. Charles Parish	Restraint	~	~	<10
045	St. Charles Parish	Restraint	~	~	<10
045	St. Charles Parish	Restraint	~	~	<10
045	St. Charles Parish	Restraint	~	~	<10
045	St. Charles Parish	Restraint	~	~	<10
045	St. Charles Parish	Restraint	~	~	<10
045	St. Charles Parish	Restraint	~	~	<10
048	St. John the Baptist Parish	Restraint	~	~	<10
052	St. Tammany Parish	Restraint	~	~	<10
052	St. Tammany Parish	Restraint	~	~	<10
052	St. Tammany Parish	Restraint	~	~	<10
052	St. Tammany Parish	Restraint	~	~	<10
052	St. Tammany Parish	Seclusion	~	~	<10
052	St. Tammany Parish	Seclusion	~	~	<10
052	St. Tammany Parish	Seclusion	~	~	<10
052	St. Tammany Parish	Seclusion	~	~	<10
052	St. Tammany Parish	Seclusion	~	~	<10
052	St. Tammany Parish	Seclusion	~	~	<10
052	St. Tammany Parish	Seclusion	~	~	<10
052	St. Tammany Parish	Seclusion	~	~	<10
064	Winn Parish	Restraint	~	~	<10
066	City of Bogalusa School District	Restraint	~	~	<10
066	City of Bogalusa School District	Restraint	~	~	<10

**Use of Seclusion and Restraint for Students with Disabilities
2015-2016 School Year Data Report**

LEA Code	LEA Name	Seclusion/ Restraint	Primary Exceptionality	Total Incidents	Total Students
101	Special School District	Restraint	~	~	<10
101	Special School District	Restraint	~	~	<10
363	RSD-Crescent City Schools	Restraint	~	~	<10
363	RSD-Crescent City Schools	Restraint	~	~	<10
363	RSD-Crescent City Schools	Seclusion	~	~	<10
363	RSD-Crescent City Schools	Seclusion	~	~	<10
363	RSD-Crescent City Schools	Seclusion	~	~	<10
363	RSD-Crescent City Schools	Seclusion	~	~	<10
368	RSD-Morris Jeff Community School	Restraint	~	~	<10
368	RSD-Morris Jeff Community School	Seclusion	~	~	<10
374	RSD-Success Preparatory Academy	Restraint	~	~	<10
374	RSD-Success Preparatory Academy	Seclusion	~	~	<10
381	RSD-Akili Academy of New Orleans	Restraint	~	~	<10
381	RSD-Akili Academy of New Orleans	Seclusion	~	~	<10
381	RSD-Akili Academy of New Orleans	Seclusion	~	~	<10
381	RSD-Akili Academy of New Orleans	Seclusion	~	~	<10
395	RSD-Algiers Charter Schools Association (ACSA)	Restraint	~	~	<10
395	RSD-Algiers Charter Schools Association (ACSA)	Restraint	~	~	<10
395	RSD-Algiers Charter Schools Association (ACSA)	Restraint	~	~	<10
395	RSD-Algiers Charter Schools Association (ACSA)	Seclusion	~	~	<10
398	RSD-Knowledge is Power Program (KIPP) N.O.	Restraint	~	~	<10
398	RSD-Knowledge is Power Program (KIPP) N.O.	Restraint	~	~	<10
398	RSD-Knowledge is Power Program (KIPP) N.O.	Restraint	~	~	<10
398	RSD-Knowledge is Power Program (KIPP) N.O.	Restraint	~	~	<10
398	RSD-Knowledge is Power Program (KIPP) N.O.	Restraint	~	~	<10
398	RSD-Knowledge is Power Program (KIPP) N.O.	Seclusion	~	~	<10
399	RSD-FirstLine Schools, Inc.	Restraint	~	~	<10
399	RSD-FirstLine Schools, Inc.	Restraint	~	~	<10
399	RSD-FirstLine Schools, Inc.	Restraint	~	~	<10
399	RSD-FirstLine Schools, Inc.	Seclusion	~	~	<10
			Total	1,180	228

Table 4. Seclusion/Restraint Count of Incidents & Students by Race/Ethnicity, 2015-2016 School Year

LEA Code	LEA Name	Seclusion/Restraint	Race/Ethnicity	Total Incidents	Total Students
002	Allen Parish	Restraint	~	~	<10
003	Ascension Parish	Restraint	~	~	<10
003	Ascension Parish	Seclusion	~	~	<10
003	Ascension Parish	Seclusion	~	~	<10
005	Avoyelles Parish	Restraint	~	~	<10
005	Avoyelles Parish	Restraint	~	~	<10
005	Avoyelles Parish	Seclusion	~	~	<10
008	Bossier Parish	Restraint	~	~	<10
008	Bossier Parish	Restraint	~	~	<10
008	Bossier Parish	Restraint	~	~	<10
009	Caddo Parish	Restraint	~	~	<10
009	Caddo Parish	Seclusion	~	~	<10
009	Caddo Parish	Seclusion	~	~	<10
010	Calcasieu Parish	Restraint	~	~	<10
010	Calcasieu Parish	Restraint	~	~	<10
010	Calcasieu Parish	Seclusion	Black or African American	84	15
010	Calcasieu Parish	Seclusion	~	~	<10
010	Calcasieu Parish	Seclusion	White	99	12
022	Grant Parish	Restraint	~	~	<10
023	Iberia Parish	Restraint	~	~	<10
023	Iberia Parish	Restraint	~	~	<10
025	Jackson Parish	Restraint	~	~	<10
028	Lafayette Parish	Restraint	~	~	<10
028	Lafayette Parish	Seclusion	~	~	<10
029	Lafourche Parish	Restraint	~	~	<10
029	Lafourche Parish	Restraint	~	~	<10
029	Lafourche Parish	Restraint	~	~	<10
029	Lafourche Parish	Seclusion	~	~	<10
034	Morehouse Parish	Restraint	~	~	<10
036	Orleans Parish	Restraint	~	~	<10
036	Orleans Parish	Seclusion	~	~	<10
040	Rapides Parish	Restraint	Black or African American	30	17
040	Rapides Parish	Restraint	~	~	<10
040	Rapides Parish	Restraint	~	~	<10
040	Rapides Parish	Restraint	White	93	18
044	St. Bernard Parish	Seclusion	~	~	<10
045	St. Charles Parish	Restraint	~	~	<10
045	St. Charles Parish	Restraint	~	~	<10

**Use of Seclusion and Restraint for Students with Disabilities
2015-2016 School Year Data Report**

LEA Code	LEA Name	Seclusion/ Restraint	Race/Ethnicity	Total Incidents	Total Students
045	St. Charles Parish	Restraint	~	~	<10
048	St. John the Baptist Parish	Restraint	~	~	<10
052	St. Tammany Parish	Restraint	~	~	<10
052	St. Tammany Parish	Restraint	~	~	<10
052	St. Tammany Parish	Restraint	~	~	<10
052	St. Tammany Parish	Seclusion	~	~	<10
052	St. Tammany Parish	Seclusion	~	~	<10
052	St. Tammany Parish	Seclusion	~	~	<10
052	St. Tammany Parish	Seclusion	White	20	11
064	Winn Parish	Restraint	~	~	<10
066	City of Bogalusa School District	Restraint	~	~	<10
101	Special School District	Restraint	~	~	<10
363	RSD-Crescent City Schools	Restraint	~	~	<10
363	RSD-Crescent City Schools	Seclusion	~	~	<10
368	RSD-Morris Jeff Community School	Restraint	~	~	<10
368	RSD-Morris Jeff Community School	Seclusion	~	~	<10
374	RSD-Success Preparatory Academy	Restraint	~	~	<10
374	RSD-Success Preparatory Academy	Seclusion	~	~	<10
381	RSD-Akili Academy of New Orleans	Restraint	~	~	<10
381	RSD-Akili Academy of New Orleans	Seclusion	~	~	<10
395	RSD-Algiers Charter Schools Association (ACSA)	Restraint	~	~	<10
395	RSD-Algiers Charter Schools Association (ACSA)	Seclusion	~	~	<10
398	RSD-Knowledge is Power Program (KIPP) N.O.	Restraint	Black or African American	23	16
398	RSD-Knowledge is Power Program (KIPP) N.O.	Seclusion	~	~	<10
399	RSD-FirstLine Schools, Inc.	Restraint	~	~	<10
399	RSD-FirstLine Schools, Inc.	Seclusion	~	~	<10
Total				1,180	228

Table 5. Seclusion/Restraint Count of Incidents & Students by Gender, 2015-2016 School Year

LEA Code	LEA Name	Seclusion/ Restraint	Gender	Total Incidents	Total Students
002	Allen Parish	Restraint	~	~	<10
003	Ascension Parish	Restraint	~	~	<10
003	Ascension Parish	Seclusion	~	~	<10
005	Avoyelles Parish	Restraint	~	~	<10
005	Avoyelles Parish	Seclusion	~	~	<10
008	Bossier Parish	Restraint	~	~	<10
008	Bossier Parish	Restraint	~	~	<10
009	Caddo Parish	Restraint	~	~	<10
009	Caddo Parish	Restraint	~	~	<10
009	Caddo Parish	Seclusion	~	~	<10
009	Caddo Parish	Seclusion	Male	18	11
010	Calcasieu Parish	Restraint	~	~	<10
010	Calcasieu Parish	Restraint	~	~	<10
010	Calcasieu Parish	Seclusion	~	~	<10
010	Calcasieu Parish	Seclusion	Male	186	28
022	Grant Parish	Restraint	~	~	<10
023	Iberia Parish	Restraint	~	~	<10
025	Jackson Parish	Restraint	~	~	<10
028	Lafayette Parish	Restraint	~	~	<10
028	Lafayette Parish	Seclusion	~	~	<10
029	Lafourche Parish	Restraint	~	~	<10
029	Lafourche Parish	Restraint	~	~	<10
029	Lafourche Parish	Seclusion	~	~	<10
034	Morehouse Parish	Restraint	~	~	<10
036	Orleans Parish	Restraint	~	~	<10
036	Orleans Parish	Seclusion	~	~	<10
040	Rapides Parish	Restraint	~	~	<10
040	Rapides Parish	Restraint	Male	133	31
044	St. Bernard Parish	Seclusion	~	~	<10
045	St. Charles Parish	Restraint	~	~	<10
045	St. Charles Parish	Restraint	~	~	<10
048	St. John the Baptist Parish	Restraint	~	~	<10
052	St. Tammany Parish	Restraint	~	~	<10
052	St. Tammany Parish	Restraint	Male	18	13
052	St. Tammany Parish	Seclusion	~	~	<10
052	St. Tammany Parish	Seclusion	Male	20	12
064	Winn Parish	Restraint	~	~	<10
066	City of Bogalusa School District	Restraint	~	~	<10

**Use of Seclusion and Restraint for Students with Disabilities
2015-2016 School Year Data Report**

LEA Code	LEA Name	Seclusion/ Restraint	Gender	Total Incidents	Total Students
101	Special School District	Restraint	~	~	<10
363	RSD-Crescent City Schools	Restraint	~	~	<10
363	RSD-Crescent City Schools	Seclusion	~	~	<10
368	RSD-Morris Jeff Community School	Restraint	~	~	<10
368	RSD-Morris Jeff Community School	Seclusion	~	~	<10
374	RSD-Success Preparatory Academy	Restraint	~	~	<10
374	RSD-Success Preparatory Academy	Seclusion	~	~	<10
381	RSD-Akili Academy of New Orleans	Restraint	~	~	<10
381	RSD-Akili Academy of New Orleans	Seclusion	~	~	<10
395	RSD-Algiers Charter Schools Association (ACSA)	Restraint	~	~	<10
395	RSD-Algiers Charter Schools Association (ACSA)	Restraint	~	~	<10
395	RSD-Algiers Charter Schools Association (ACSA)	Seclusion	~	~	<10
398	RSD-Knowledge is Power Program (KIPP) N.O.	Restraint	~	~	<10
398	RSD-Knowledge is Power Program (KIPP) N.O.	Restraint	Male	17	11
398	RSD-Knowledge is Power Program (KIPP) N.O.	Seclusion	~	~	<10
399	RSD-FirstLine Schools, Inc.	Restraint	~	~	<10
399	RSD-FirstLine Schools, Inc.	Restraint	~	~	<10
399	RSD-FirstLine Schools, Inc.	Seclusion	~	~	<10
399	RSD-FirstLine Schools, Inc.	Seclusion	~	~	<10
Total				1,180	228