

Louisiana Believes

LEAP Connect Assessment Updates 2019-2020
Webinar
September 26, 2019



Today's Goals

At the end of this presentation, participants will understand:

- what's new for LEAP Connect 2019-2020
- review of LEAP Connect assessment design
- what resources are available for LEAP Connect
- what's coming for 2020-2021

LEAP Connect Science is Here

Science assessments will be administered in grades 4, 8 and high school (grade 11)

These are FIELD TESTS; however, all students who participate in the alternate assessments in those grades MUST take it.

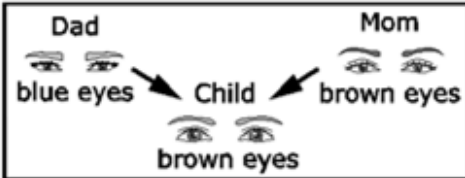
We will use the results from this year's science assessments to make decisions about future development.


Science Sample Items


This item is about parents and offspring.

Traits are characteristics passed from parents to offspring.

Which shows how parents and offspring may have different traits?

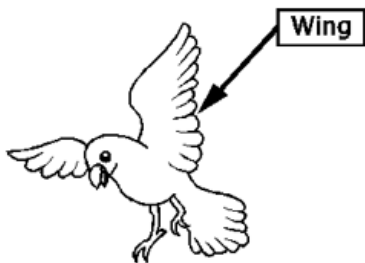
A. 

B. 

C. 

This item is about how animals use their body parts for different purposes.

This is a bird.



What is the purpose of the bird's wings?

- A. to sing
- B. to fly

This item is about humans and the environment.

Humans interact with their environment every day. Some interactions are harmful to the environment.

Humans can pollute the land, water, and air with trash. For example, millions of tons of trash are dumped into the oceans each year.

How can pollution caused by humans affect the environment?

- A. About 18 million acres of trees are cut every year for wood.
- B. Arctic ice and glaciers are melting and raising ocean levels.
- C. A whale died because it ate a large amount of garbage.

Online Tools Training-Updated

Online Tools Training

Student Response Check

Mathematics

Grades 3-5

Grades 6-8

High School

English Language Arts

OTTs are now broken up into grade bands and by content. New items have been added to all grade bands. Science will be added in the next few months.

High school's OTT may seem short, but that's because it covers one grade, whereas the others cover multiple grades. You are welcome to practice other grade bands.

To access the OTTs (use Google Chrome): <https://wbte.drcedirect.com/LA/portals/la>

Purpose of the OTTs

Online Tools Training are designed to give students and TAs an opportunity to become familiar with the testing platform and the online tools.

For this reason, items will have “Practice Hints” to encourage students to use the tools available.

The screenshot displays a digital testing environment. At the top, there is a toolbar with icons for navigation and a 'Line Guide' button. The main content area is divided into two columns. The left column contains a reading passage about Miss Johnson, with a red arrow pointing to the text 'She is nearly 6 times as old as me.' The right column contains a 'Practice Hint' in italics, a question about the passage, and an illustration of a person in a wheelchair at a computer terminal. A small circle with the letter 'a' is next to the illustration.

Question 4

remember. She is a senior citizen. This may seem weird, but Miss Johnson is a great friend. She is nearly 6 times as old as me.

It was a hot and sticky day when I saw Miss Johnson. I went over to visit her. We went outside into her garden to pull weeds. I pointed to the violets in the shade. Miss Johnson shared, “Not all plants like the sun.” Then I pointed to the irises. “Oh, irises like plenty of sunshine,” she said.

Miss Johnson teaches me all about plants. I am so lucky. Miss Johnson will always be my favorite neighbor.

Friday

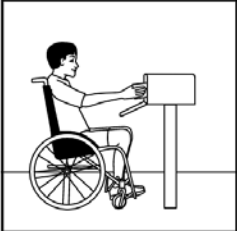
This week flew by! I had fun playing basketball with Mason and Carlos. I had fun with my neighbor, Miss Johnson. I am glad I have friends that are young and old.

Time for sleep. I think I am going to need lots of energy tomorrow. I plan on staying busy with my friends.

(Practice Hint: To read through the whole passage, either scroll with the mouse or move the scroll bar up and down.)

Dylan likes to spend time with his friends.

Which sentence from the story shows how Dylan spends time with his friends?

a 

He gets letters from many friends.

Practicing the ELA CRs

The update OTTs also provide students with an opportunity to practice the CRs in the testing platform. The format is identical to what we use with the LEAP Connect assessment.

However, the OTT CRs should not be administered without the Directions for Test Administration (DTA) and the Reference Materials/Writing Stimuli.

The *Test Administrator Annotation Box* should only be used to clarify unusual spelling, explain symbols, or give specific guidance about the student's writing. No personal information about students or TAs should be added here.

New ELA CRs in the OTT

Question 10

Navigation icons: Home, Edit, Print, Help, Line Guide

You are going to write an essay that is about the cause and effect of what might happen because someone is tired.

Cause-and-effect means that one event, the cause, makes the other event, the effect, happen. One example of cause and effect is when you eat fruits and vegetables everyday helps you be strong and healthy. The effect is that you get strong and healthy. In your essay, you will write about what might happen because someone is tired.

In this essay, I will write about the cause and effect of

Because someone is tired

This can be described

In conclusion,

Each grade band has one ELA CR in the OTT. DTAs and Reference Materials/Writing Stimuli is available in the DRC INSIGHT Portal (eDirect).

The Test Administrator annotation box is also included.

For Test Administrator use if annotations are necessary

Accessing the OTT Materials-DRC INSIGHT Portal

To access the OTT DTAs and Reference Materials, go to the DRC INSIGHT Portal (eDirect)

<https://la.drcedirect.com/default.aspx?leapp=General+Information&leview=Documents>

The screenshot shows the DRC INSIGHT portal interface. At the top, there is a navigation bar with 'General Information', 'Documents' (selected), and 'Test Tutorials'. Below this is a 'Documents' section with a '+ Instructions' link. There are two dropdown menus: 'Administration' set to 'LEAP Connect Spring 2020' and 'Document Type' set to 'OTT Documents'. A 'Show Documents' button is located below the filters. A table below the button displays a list of documents with columns for Administration, Document Type, Title, and Description.

Administration ▲	Document Type ▲	Title ▲	Description
LEAP Connect Spring 2020	OTT Documents	OTT Directions for Test Administration - Gr 3-5	Grades 3-5
LEAP Connect Spring 2020	OTT Documents	OTT Directions for Test Administration - Gr 6-8	Grades 6-8

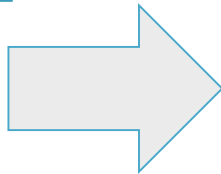
Accessing the OTT Materials: Assessment Library

LEAP CONNECT ASSESSMENT RESOURCES

File
LEAP Connect ELA Sample CR Grades 3-5 Directions for Administration PDF
LEAP Connect ELA Sample CR Grades 3-5 Webinar PDF
LEAP Connect ELA Sample CR Grades 6-8, 11 Directions for Administration PDF
LEAP Connect ELA Sample CR Grades 6-8, 11 Webinar PDF
LEAP Connect ELA Sample CR Stimuli Grades 3-5 PDF
LEAP Connect ELA Sample CR Stimuli Grades 6-8, 11 PDF
LEAP Connect Sample Math CR Directions for Administration PDF
LEAP Connect Sample Math CR Reference Materials PDF
LEAP Connect Webinar - Teacher
OTT Directions for Administration (3-5).PDF
OTT Directions for Administration (6-8).PDF
OTT Directions for Administration (high school).PDF
OTT Reference Materials (3-5).PDF
OTT Reference Materials (6-8).PDF
OTT Reference Materials (high school).PDF

You can also access these documents through the Assessment Guidance Library

<https://www.louisianabelieves.com/resources/library/assessment-guidance>



Assessment Guides

Assessment Guides are also by grade band this year.

LEAP CONNECT ASSESSMENT GUIDE

File	Download
LEAP Connect Assessment Guide for Grades 3-5	Download
LEAP Connect Assessment Guide for Grades 6-8	Download
LEAP Connect Assessment Guide for High School	Download

New for 2019-2020

Science Information

New Sample Item Screenshots
(more in OTT)

Math/ELA Vocabulary lists for
alternative communication

Updated Resources page

Science Field Test Design

From the Grade 6-8 Assessment Guide

LEAP Connect Science Field Test Design

The tests are divided into two sessions which both include SR and CR items.

Table 6. LEAP Connect Science Field Test Design

Session	Session 1	Session 2
Content	science questions and completion items; each worth 1 point	
Type (Number) of Questions		
Grade 8	SR (13-14), CR (1-2)	SR (13-14), CR (1-2)

Table 7. Percent Representation Per Science Domain

Category	Earth and Space Science	Life Science	Physical Science
Grade 8	30%	40%	30%

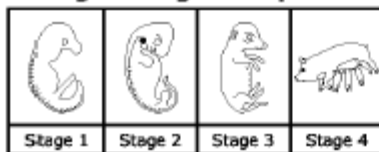
Assessment Guide: Science Sample Item

This item is about how animals develop and grow.

An embryo is the earliest stage of development of an unborn or unhatched animal.

For example, a pig starts life as an embryo and then is born and grows as a piglet.

Stages of Pig Development

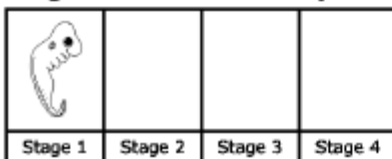


Other animals begin life with similar stages of embryo development.

This is a chart to show stages of a chicken's development.

The first stage shows the Stage 1 embryo development of a chicken. It looks similar to the Stage 1 embryo development of the pig.

Stages of Chicken Development



These are pictures to use to complete the chart of a chicken's development.



Complete the chart by placing the stages of chicken development in the correct order from Stage 2 to Stage 4.

Rubric

Score	Description
1	Student correctly places exactly 3 pictures of the chicken development stages on the chart in the correct order.
0	Student does not correctly place exactly 3 pictures of the chicken development stages on the chart in the correct order.

Assessment Guides: Sample Items

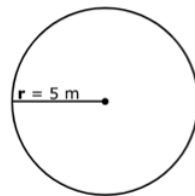
Sample items for all content areas are available in the assessment guides.

LEAP Connect Math Grade 7 Selected Response

Content Assessed: Geometry
Standard: LC.7.G.B.4
Complexity Level: Tier 2
Answer Key: C

This item is about finding the area of a circle.

This is a circle.



This is the formula for finding the area of a circle.

$$\text{Area} = 3.14 \times r \times r$$

A letter can stand for a number in an equation.

The letter r in this equation stands for the radius. The radius of this circle is 5 meters.

Which equation shows how to find the area of the circle?

- Ⓐ Area = $3.14 \times 5 = 15.70$ sq m
- Ⓑ Area = $3.14 + 5 + 5 = 13.14$ sq m
- Ⓒ Area = $3.14 \times 5 \times 5 = 78.50$ sq m

Appendix D

Appendix D: English Language Arts and Mathematics Vocabulary List

The vocabulary lists are for American Sign Language (ASL) translation, object replacement, tactile graphics, word boards or word banks, and AT/AAC devices.



ELA		Mathematics		
captions	main idea	addition	fraction	problem
central idea	organize	area	graph	rectangle
character	paragraph	array	grid	round
compare	passage	bar graph	height	shape
conclusion	period	centimeters	identify	solve
describes	phrase	data	increase	square
details	problem and solution	data table	length	subtraction
diagram	punctuation	decimal	less than	symbol
edit	question mark	decrease	line plot	tally chart
essays	revise/revision	dimensions	measurement	thermometer
events	sentence	divided	model	triangle
exclamation point	setting	division	multiplication	unit
form	summary	equal	number	value
format	text	equation	parallel	x-axis
heading	topic	expression	pattern	y-axis
introduction	paragraph	figure	perimeter	
key details		formula	place value	

LEAP Connect's Design

The LEAP Connect assessments have been designed for students with a variety of cognitive abilities and communication modalities to access.

DTAs are made available to test administrators two weeks before administration begins to prepare any additional materials or to download new words/images to communication devices. TAs should review the CRs in ELA and math because these are areas where students with limited motor skills, those who use alternative communication mode and VI students may require additional support.

The OTTs should give you a better idea of how the test items function and make you more aware of areas where your students may need more to access the test.

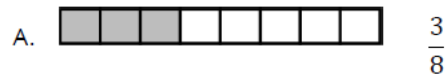
Item Answer Options

Answer options are provided on the computer screen in the testing platform and on paper as part of the Reference Materials.

We have done this with the OTTs as well.

Use these to practice how to make them accessible to your students.

Item 4



Additional ELA Resources

Practice ELA Constructed Response Items: [Assessment Guidance Library](#)

These are paper based ELA CRs that include a sample Directions for Test Administration and Writing Stimuli.



**English Language Arts
Sample
Constructed-Response
Directions for
Administration
Grades 3-5**



**English Language Arts
Sample
Constructed-Response
Stimuli
Grades 3-5**



**English Language Arts
Sample
Constructed-Response
Directions for
Administration
Grades 6-8, 11**



**English Language Arts
Sample
Constructed-Response
Stimuli
Grades 6-8, 11**

Additional Mathematics Resources

Practice Mathematics CRs Grades 3-8, 11:

https://www.louisianabelieves.com/docs/default-source/assessment/leap-connect-sample-math-cr-directions-for-administration.pdf?sfvrsn=a0e89c1f_5

https://www.louisianabelieves.com/docs/default-source/assessment/leap-connect-sample-math-cr-reference-materials.pdf?sfvrsn=a7e89c1f_5

Webinars for all ELA CRs are available in the [Assessment Guidance Library](#).

Math CR Webinar: October 16 3:30-4:30

<https://ldoe.zoom.us/j/448611621>



Coming for 2020-2021

Full length LEAP Connect Practice Tests will be available in these grades:

- **ELA Grades 4, 8, 11**
- **Mathematics Grades 4, 6, 8**
- **Science Grades 4, 8, HS**

More grades will come in 2021-2022.

Students with Significant Cognitive Disabilities Resource Library

The Department has launched a [new hub page](#) with a comprehensive list of tools and resources for educators and families to support students with significant cognitive disabilities, including

- Family Resources
- Classroom Supports
- Assessment Resources
- High School Pathways Information
- BESE Policy Bulletins

The new hub page also links to a [new library](#) that indexes academic and policy resources.

STUDENTS WITH SIGNIFICANT COGNITIVE DISABILITIES

Louisiana believes that all students, including students with the most significant cognitive disabilities, should be held to the highest possible grade-level expectations. Much progress has been made to deliver on this belief including:

- the Louisiana Connectors standards in english language arts, mathematics, and science with aligned instructional resources,
- a LEAP Connect alternate assessment aligned to the Louisiana Connectors to measure student progress, and
- an established graduation pathway to a high school diploma for students assessed on an alternate assessment.

To support these unique learners, the Department provides tools and resources to educators and families, including

- Family Resources
- Classroom Supports
- Assessment Resources
- High School Pathways Information
- BESE Policy Bulletins

To learn more, please click on the button below.

RESOURCES TO SUPPORT STUDENTS
WITH SIGNIFICANT COGNITIVE DISABILITIES

LEAP Connect Alternate Assessment Participation Criteria - Bulletin 1530

BESE policy outlines specific criteria a student must meet to participate in the LEAP Connect. The criteria has been revised for full implementation in the 2019-2020 school year. LEAP Connect decisions must be made no later than 30 days prior to the opening of the state testing window. IEP teams must now use the state's newly revised eligibility criteria:

- 1. Criterion 1** contains significant revisions and is now high school (HS) cohort specific
 - a. Students entering a **HS cohort on or before the 2019-2020 SY** must have a disability that significantly impacts **cognitive functioning and/or adaptive behavior**.
 - b. Students entering a **HS cohort during the 2020-2021 SY** and beyond must have a disability that significantly **impacts cognitive functioning**.
- 2. Criterion 2 applies to all students** at all grade levels
 - a. The student requires direct individualized instruction and substantial supports to achieve measurable gains on the challenging state academic content standards (LA Connectors) for the grade in which the student is enrolled.

3. Criterion 3 a safeguard provision with minor revisions **applies to all students** at all grade levels

Bulletin 1530 Updates

BESE approved these alternate assessment eligibility criteria revisions to Bulletin 1530 in December 2018. This criteria is effective for the 2019-2020 school year.

The Department has issued guidance documents reflecting the updated criteria:

- [Bulletin 1530 policy revisions effective for the 2019-2020 school year](#)
- [Criteria for students entering a high school cohort during the 2020-2021 SY or beyond](#)
- [Criteria for students entering a high school cohort on or before the 2019-2020 SY](#)

In addition, SER updates for the 2019-2020 school year were added to incorporate these new policy revisions.

Please note the version of Bulletin 1530 on BESE's website contains a technical error. This will be updated soon. Until then, use the guidance linked above and the IEP in SER, both reflect the BESE-approved policy changes.

Next Steps

Key Dates	Action
Now-February 2020	Practice for the LEAP Connect using all the available resources.
February 3-March 13, 2020	Administer LEAP Connect ELA, mathematics and science

Thank you for your time!

Send all assessment questions to assessment@la.gov.

Send all SPED questions to specialeducation@la.gov

Or contact me: alice.garcia@la.gov