

LEAP CONNECT

Practice Test Reference Materials

Mathematics
Grade 6

Reference Materials include required graphics that are to be presented to the student during administration of the LEAP Connect mathematics practice test. Refer to the *Directions for Practice Test Administration* (DPTA) for detailed instructions.

Session 1

Up to 35 counters (Item 6, 14, 18)

Items 1 – 2 Answer Options

Equation 1 (Item 3)

Items 3 – 11 Answer Options

Data Table 1, “Hours of Sleep” (Item 12)

Items 12 – 15 Answer Options

Formula 1 for area of a rectangle (Item 16)

Item 16 Answer Options

Celsius thermometer 1 (Item 17)

Items 17 – 20 Answer Options

Session 2

Up to 80 counters (Item 26, 29, 32)

Items 21 – 24 Answer Options

Celsius thermometer 2 (Item 25)

Items 25 – 26 Answer Options

Data Table 2, “Game Score” (Item 27)

Items 27 – 31 Answer Options

Equation 2 of plants (Item 32)

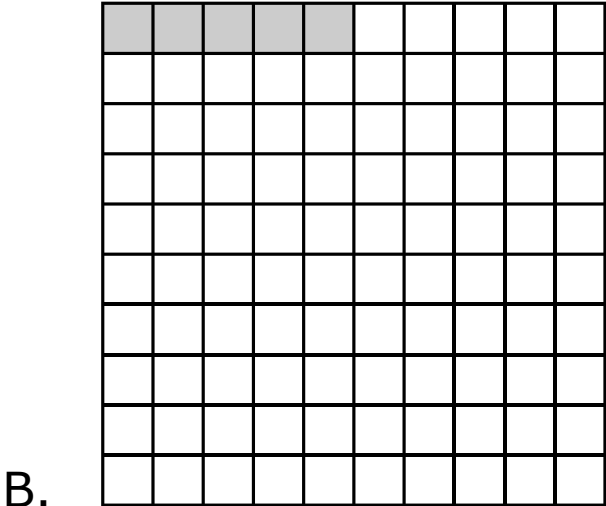
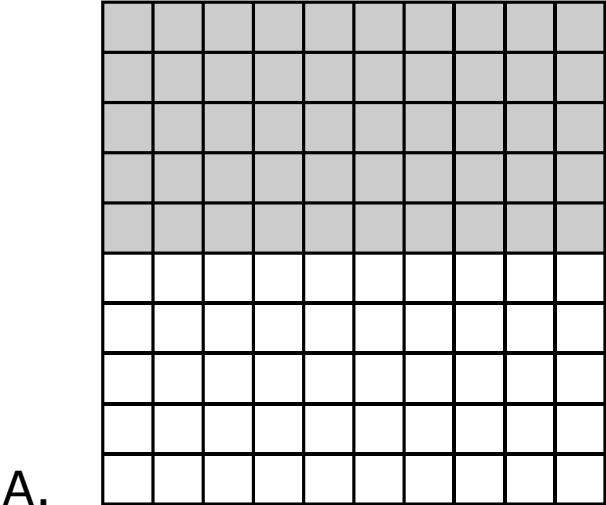
Items 32 – 34 Answer Options

Place Value Chart 1 of two numbers (Item 35)

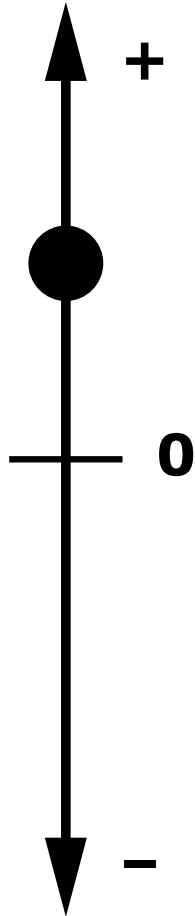
Item 35 Answer Options

Session 1

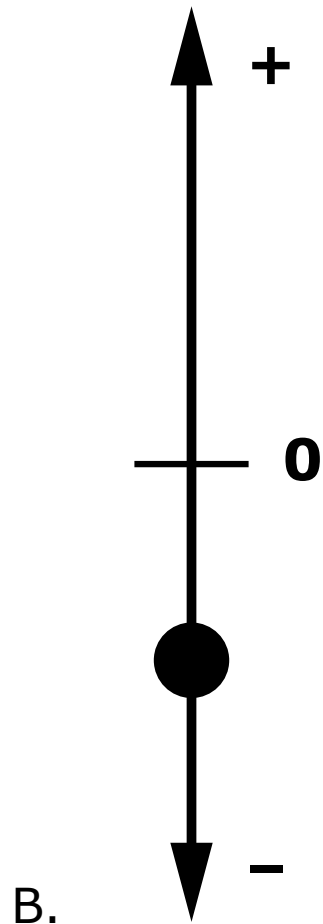
Session 1 – Item 1 Answer Options

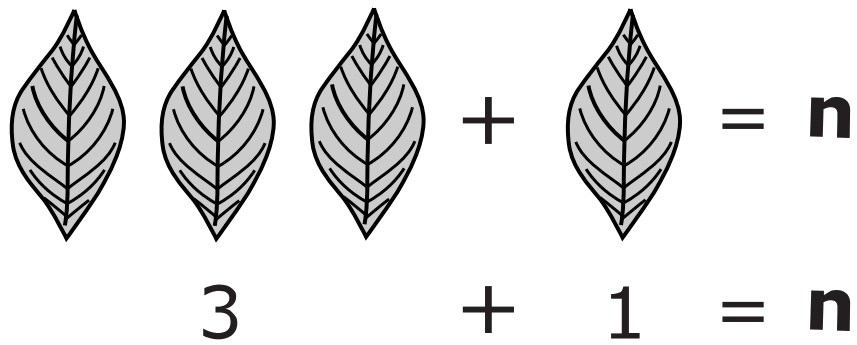


Session 1 – Item 2 Answer Options



A.



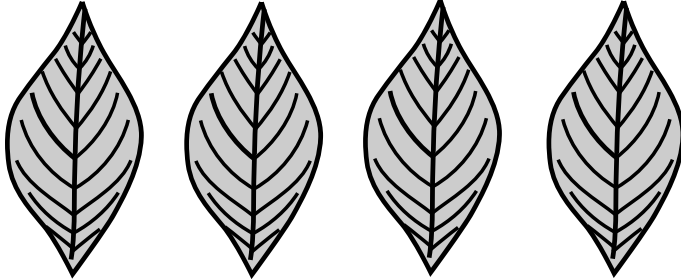


A visual equation consisting of two rows. The top row shows three leaves followed by a plus sign, one leaf, an equals sign, and the letter 'n'. The bottom row shows the number '3', a plus sign, the number '1', an equals sign, and the letter 'n'. The leaves are simple line drawings with a central vein and several side veins.

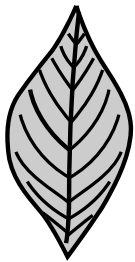
$$3 + 1 = n$$

Equation 1

Session 1 – Item 3 Answer Options



A. the total number of leaves Alex has now



B. the 1 leaf Alex received

Session 1 – Item 4 Answer Options



Session 1 – Item 5 Answer Options

A. 3 binoculars

B. 6 binoculars

C. 9 binoculars

Session 1 – Item 6 Answer Options

A. 16 books

B. 6 books

C. 4 books

Session 1 – Item 7 Answer Options

A. $24 \div 4 = 6$

B. $24 - 4 = 20$

C. $24 + 4 = 28$

Session 1 – Item 8 Answer Options

A. 30 books

B. 60 books

C. 70 books

Session 1 – Item 9 Answer Options

A. -2

B. 2

C. 1

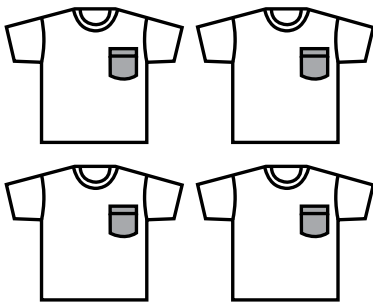
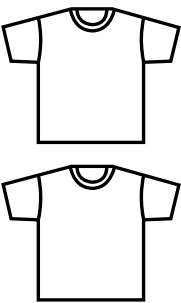
Session 1 – Item 10 Answer Options

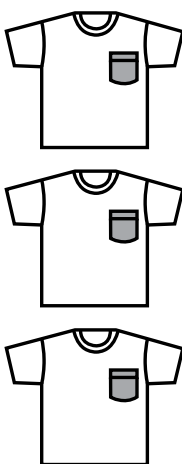
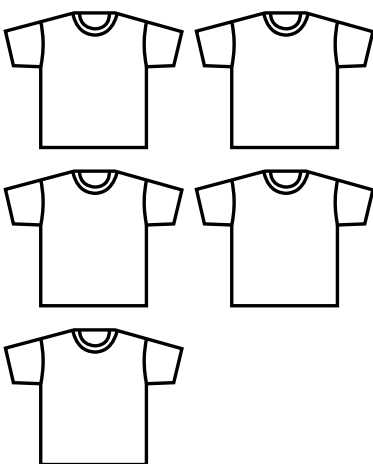
A. 10 sq cm

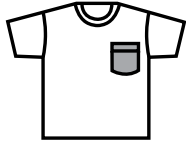
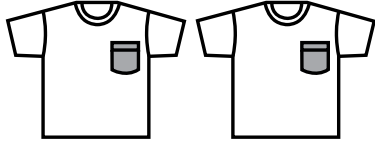
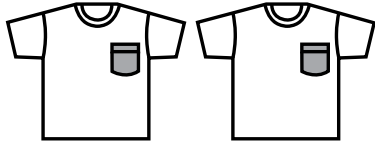
B. 20 sq cm

C. 24 sq cm

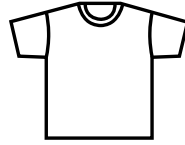
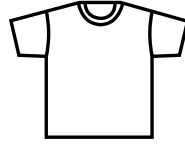
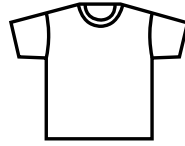
Session 1 – Item 11 Answer Options

A.  to 
4 2

B.  to 
3 5



to



C.

5

3

Hours of Sleep

| Name | Number of Hours |
|-------------|------------------------|
| George | 8 |
| Erin | 9 |
| Jean | 8 |
| Pat | 7 |
| Beth | 10 |

Data Table 1, "Hours of Sleep"

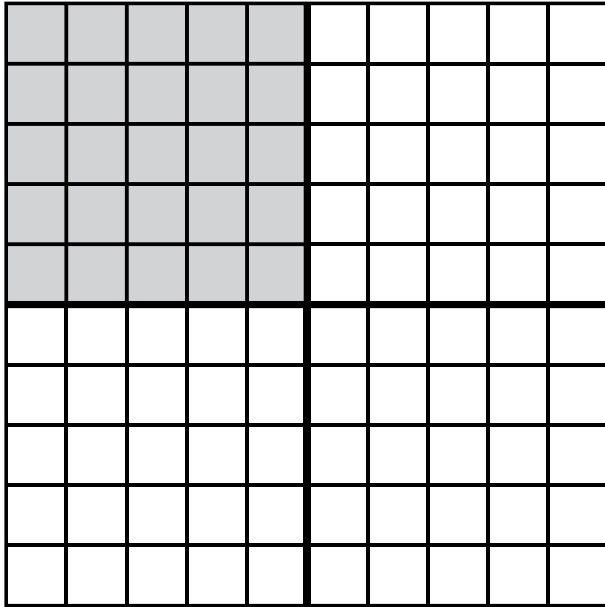
Session 1 – Item 12 Answer Options

A. 7

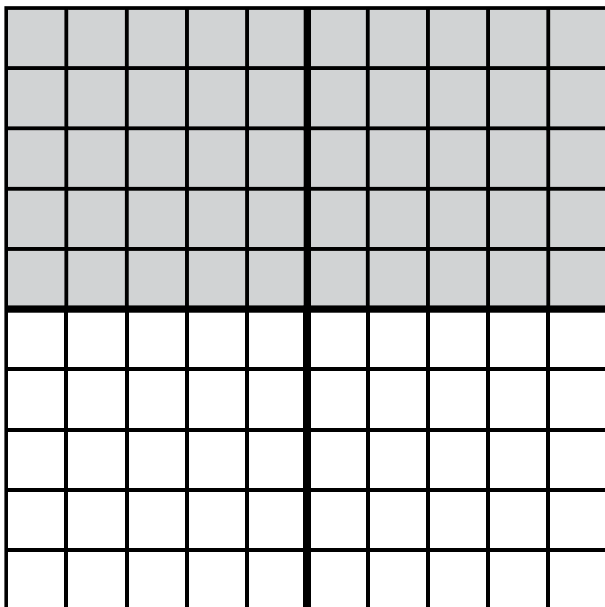
B. 8

C. 10

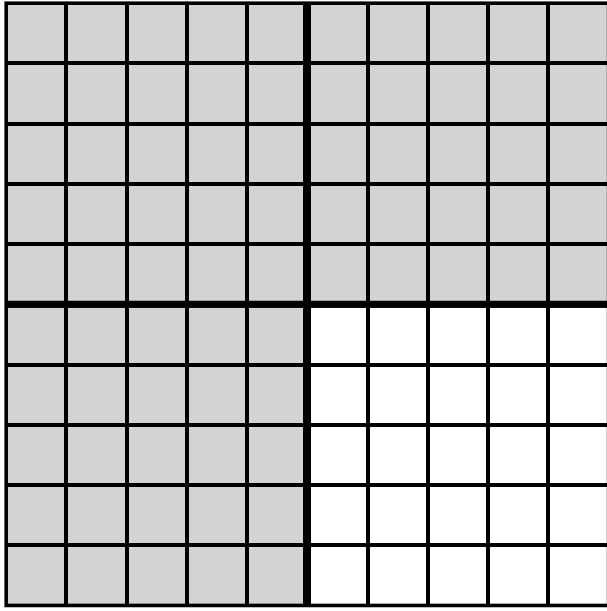
Session 1 – Item 13 Answer Options



A. 0.25



B. 0.50



C.

0.75

Session 1 – Item 14 Answer Options

A. $28 \div 7 = 4$

B. $28 - 7 = 21$

C. $28 + 7 = 35$

Session 1 – Item 15 Answer Options

A. 4 yellow blankets

B. 5 yellow blankets

C. 6 yellow blankets

$$\text{Area} = \text{Length} \times \text{Width}$$

$$\text{Area} = \underline{\hspace{2cm}} \times \underline{\hspace{2cm}}$$

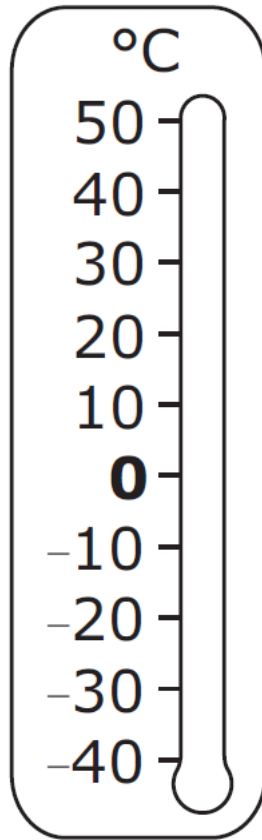
Formula 1 for area of a rectangle

Session 1 – Item 16 Answer Options

A. 7 square units

B. 12 square units

C. 14 square units



Celsius thermometer 1

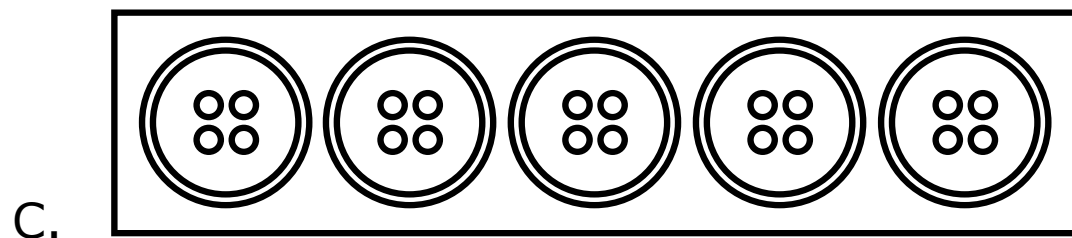
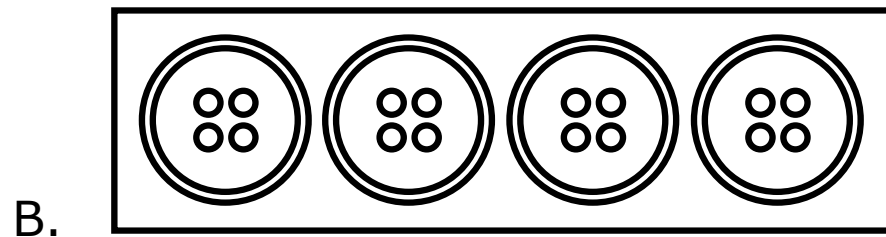
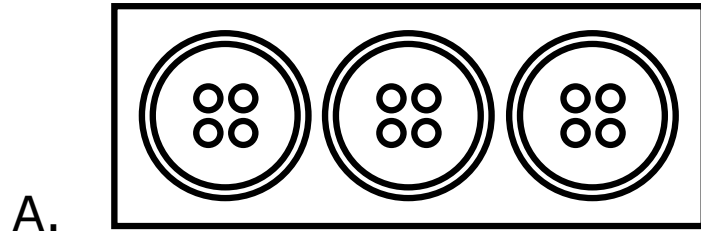
Session 1 – Item 17 Answer Options

A. 10°C

B. 0°C

C. -20°C

Session 1 – Item 18 Answer Options



Session 1 – Item 19 Answer Options

A. Point A

B. Point B

C. Point C

Session 1 – Item 20 Answer Options

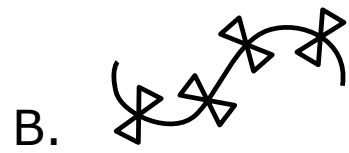
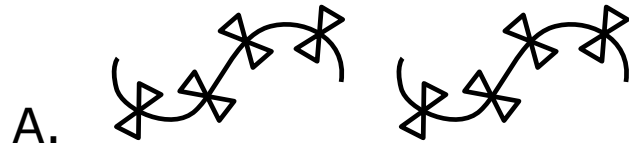
A. 2 to 5

B. 2 to 2

C. 2 to 7

Session 2

Session 2 – Item 21 Answer Options

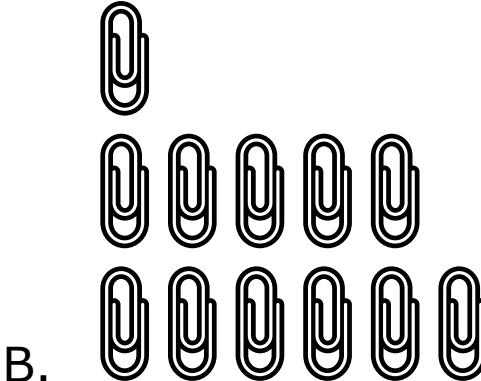
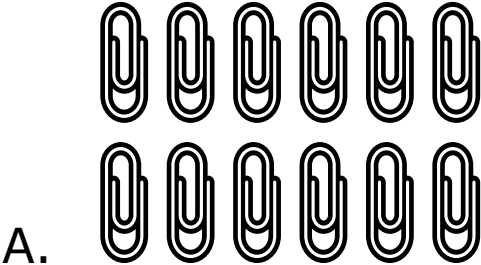


Session 2 – Item 22 Answer Options

A. 1 square unit

B. 3 square units

Session 2 – Item 23 Answer Options

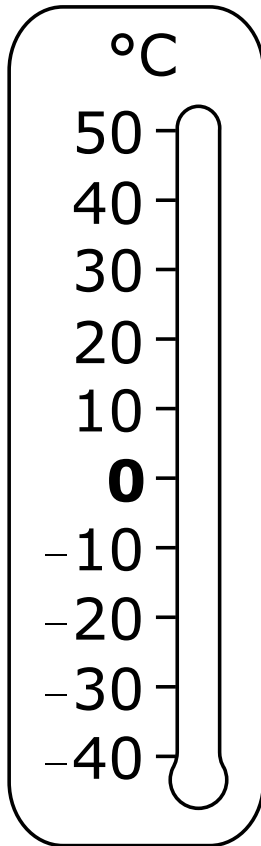


Session 2 – Item 24 Answer Options

A. 25 students

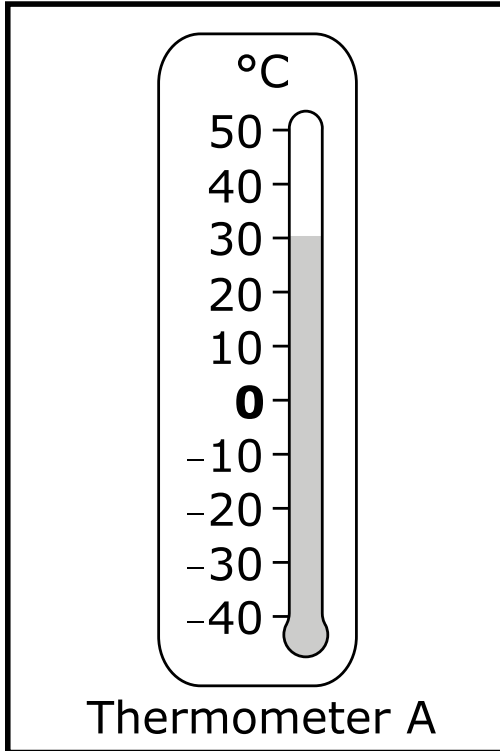
B. 50 students

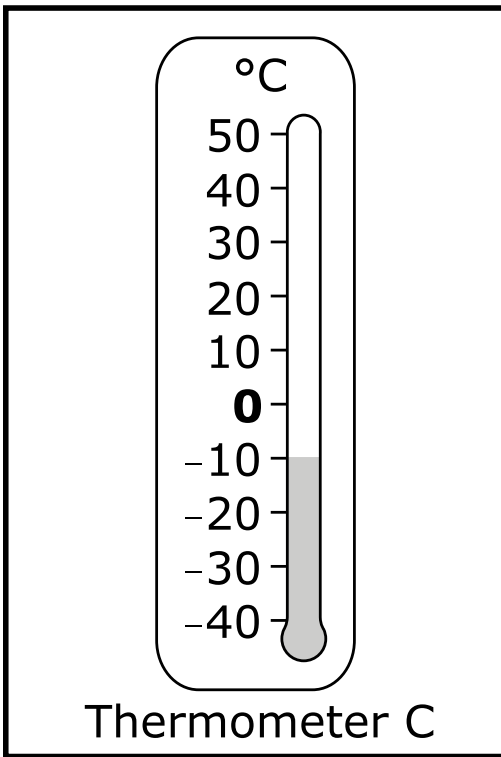
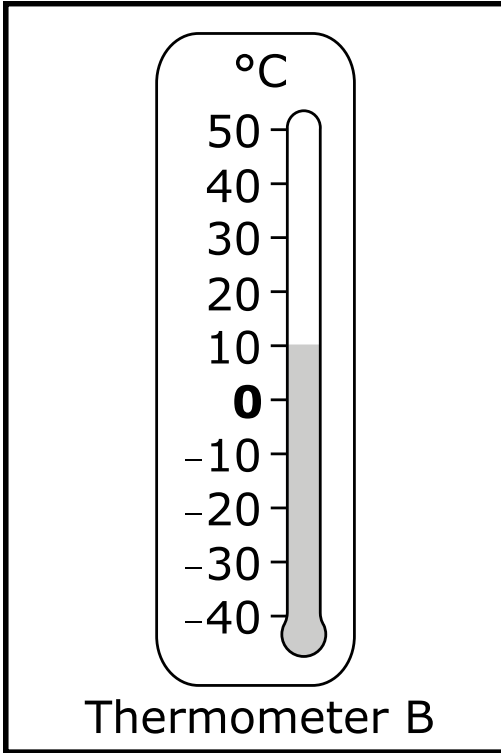
C. 75 students



Celsius thermometer 2

Session 2 – Item 25 Answer Options





Session 2 – Item 26 Answer Options

A. 4 books

B. 10 books

C. 21 books

Game Score

| Player | Score (in points) |
|---------------|------------------------------|
| Louis | -15 |
| Marie | 10 |
| Neil | -20 |

Data Table 2, "Game Score"

Session 2 – Item 27 Answer Options

A. Louis

B. Marie

C. Neil

Session 2 – Item 28 Answer Options

A. 1%

B. 10%

C. 90%

Session 2 – Item 29 Answer Options

A. $64 \div 16 = 4$

B. $64 - 16 = 48$

C. $64 + 16 = 80$

Session 2 – Item 30 Answer Options

A. -4

B. 0


C. 4

Session 2 – Item 31 Answer Options

A. 1 to 3

B. 2 to 3

C. 2 to 5


$$4 + 3 = p$$

Equation 2 of plants

Session 2 – Item 32 Answer Options

A. 4 plants

B. 7 plants

C. 12 plants

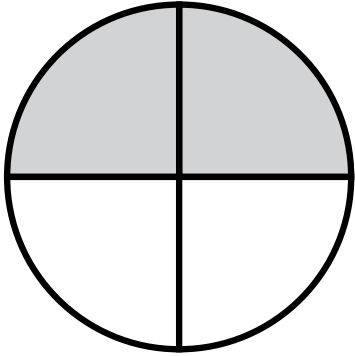
Session 2 – Item 33 Answer Options

A. 3 dollars

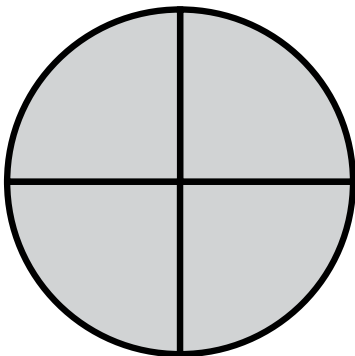
B. 4 dollars

C. 15 dollars

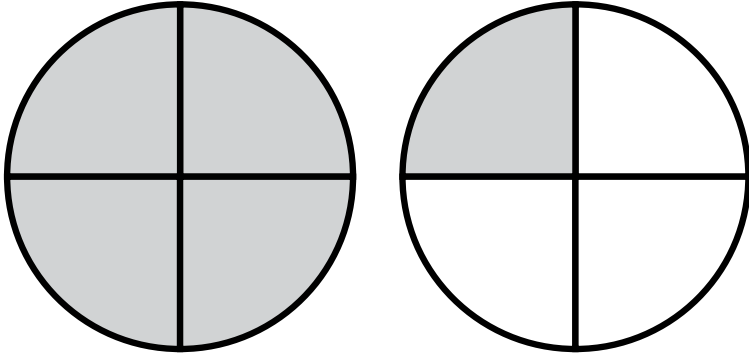
Session 2 – Item 34 Answer Options



A. 0.50



B. 1.00



C.

1.25

| | | | |
|------|---------|--------|------------|
| | . | | |
| 0 | . | 1 | 2 |
| 0 | . | 3 | 4 |
| Ones | Decimal | Tenths | Hundredths |

Place Value Chart 1 of two numbers

Session 2 – Item 35 Answer Options

A. 0.22

B. 0.46

C. 0.73

LEAP CONNECT

Practice Test