

LEAP CONNECT

Reference Materials and Writing Stimuli

High School Online Tools Training (OTT)

Reference Materials include required graphics and answer options that are to be presented to the student during the administration of LEAP Connect High School Online Tools Training. Refer to the *LEAP Connect High School Online Tools Training Directions for Test Administration* (DTA) for detailed instructions. These items should be reproduced for individual student use.

English Language Arts (ELA)

The Impact of Radio and Television Answer Options (Sample Items 1-4)

Why Schools Should Have an Arts Club Cards 1a-9a

Mathematics

Answer Options (Sample Items 1-4)

Science

Answer Options (Sample Item 1)

Bacterial Infection Chart (Sample Item 2)

Body Systems Tiles (Sample Item 2)

Answer Options (Sample Item 3)

Things Humans Do Tiles (Sample Item 4)

Things Humans Do Chart (Sample Item 4)

Answer Options (Sample Item 5)

Punnett Square and Punnett Square Tiles (Sample Item 6)

Answer Options (Sample Item 7)

Cause and Effect Chart (Sample Item 8)

Cause and Effect Statements (Sample Item 8)

Answer Options (Sample Item 9)

Some Treatments of Infectious Diseases Chart (Sample Item 10)

Treatment Tiles (Sample Item 10)

Sample Item 1



A. There were two important inventions in the 20th century.



B. Television was more popular than the radio.



C. Americans used radio for the first time to listen to music.

Sample Item 2



A. The radio was invented to send messages.



B. Every family in America had at least one television.



C. People could hear breaking news from around the world.

Sample Item 3



A. Radio and television have little use.



B. Radio and television are found in the workplace.



C. Radio and television have changed people's lives.

Sample Item 4



A. to show when radio and television were invented



B. to show that television was more popular than the radio



C. to show that radio and television have changed the way people live

Writing Stimulus Materials List for Why Schools Should Have an Arts Club

Card 1a: Example Essay, "Plant More Trees"

Card 2a: have more creative time

Card 3a: meet new people

Card 4a: learn from one another

Card 5a: Graphic Organizer

Card 6a: Capital letters, end punctuation, complete sentence

Card 7a: Response Template

Card 8a: Signal Word Example Card

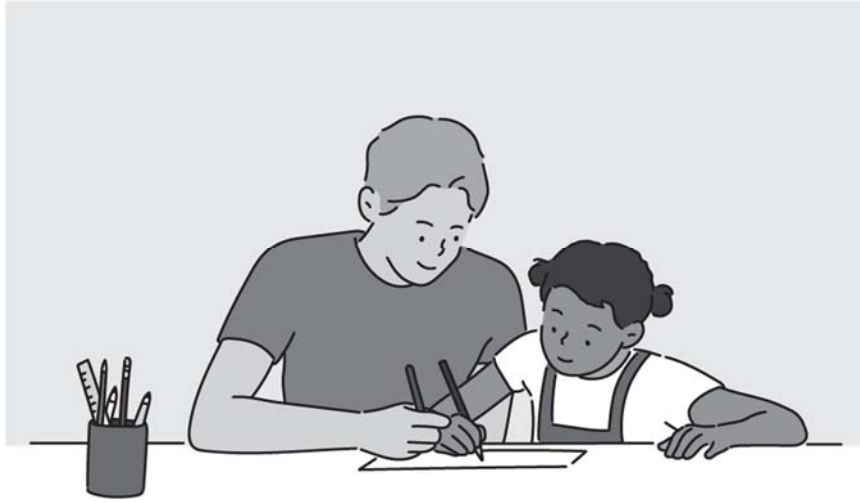
Card 9a: List of signal words

Plant More Trees

In this essay, I will convince you that the city should plant more trees. One reason is that trees are helpful.

It is important to have trees because they provide shade for people to stay cool. Also, trees provide oxygen that helps us breathe.

In conclusion, I hope you are convinced that the city should plant more trees. This is important because trees are helpful.



have more creative time

Arts Club Card 2a



meet new people

Arts Club Card 3a



learn from one another

Arts Club Card 4a

Card intentionally left blank

Claim: What Schools Should Have An Arts Club

Reason	Fact or Example
<hr/> <hr/> <hr/>	<p>1. _____ _____</p>
	<p>2. _____ _____</p>

Arts Club Card 5a

P p A a

. ! ?

Good writers use complete sentences.

Claim: Why schools should have an arts club

In this essay, I will convince you that _____

One reason _____

It is important to _____

Also, _____

In conclusion, _____

Arts Club Card 7a

It is important to have trees because they provide shade for people to stay cool.

Arts Club Card 8a

Signal Words

so

because

for example

Arts Club 9a

Mathematics

Sample Item 1

A. 4 articles

B. 6 articles

C. 16 articles

Sample Item 2

A. 2

B. 8

Sample Item 3

A. 8 quarts

B. 12 quarts

Sample Item 4

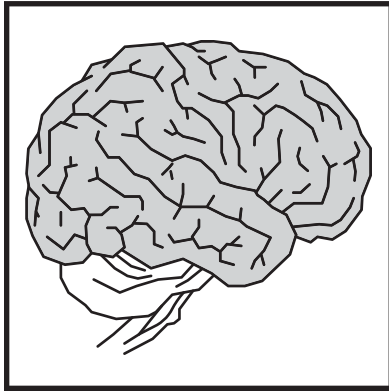
A. **$g + 4 = 15$**

B. **$15 + 4 = g$**

C. **$g + 15 = 4$**

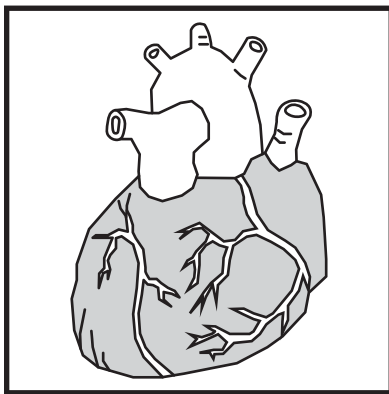
Science

Sample Item 1



A.


brain



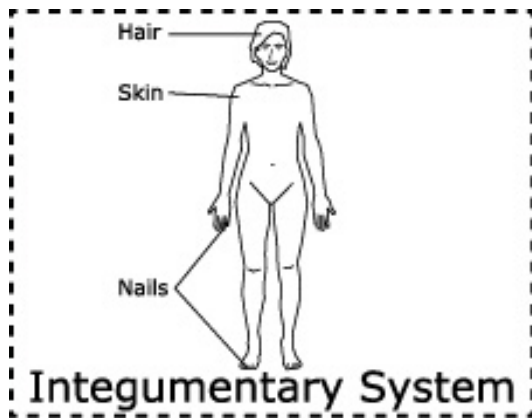
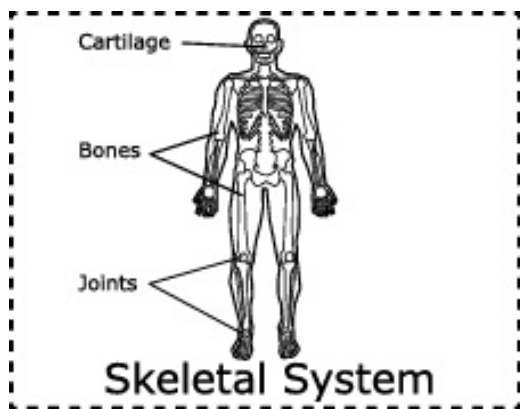
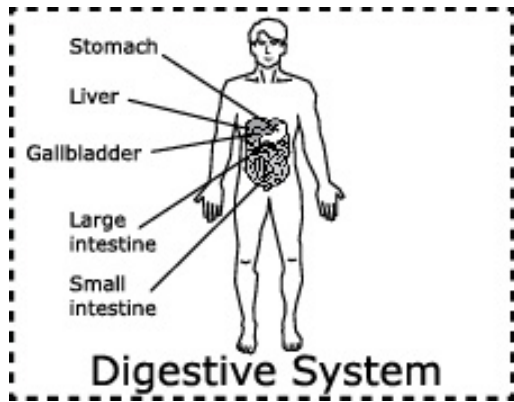
B.

heart

Bacterial Infection

Infection/ Symptom	Pneumonia/ Coughing	Cellulitis/ Skin Rash	Food Poisoning/ Vomiting
Body System Impacted	<p>Nasal passage</p> <p>Trachea</p> <p>Lungs</p>  <p>Respiratory System</p>		

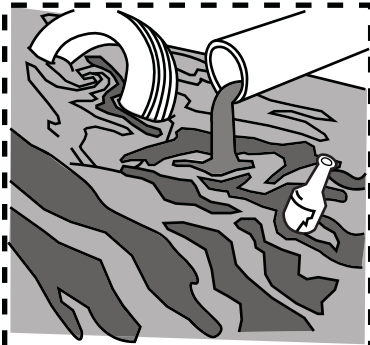
Bacterial Infection Chart



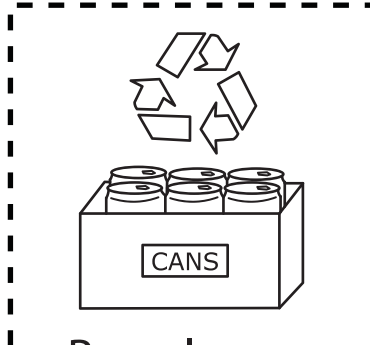
Body Systems Tiles

Sample Item 3

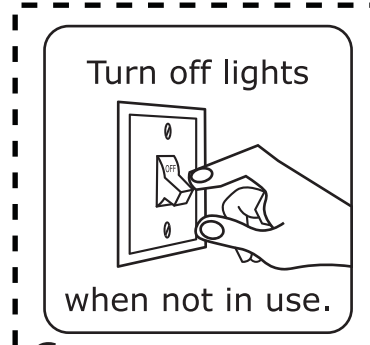
- A. About 18 million acres of trees are cut every year for wood.
- B. Arctic ice and glaciers are melting and raising ocean levels.
- C. A whale died because it ate a large amount of garbage.



Pollute water



Recycle cans



Conserve energy

Things Humans Do Tiles

Things Humans Do

Protect the Environment	Harm the Environment

Things Humans Do Chart

Sample Item 5

- A. No traits are passed from parent to offspring.
- B. Some traits are passed from parent to offspring.

	B	b
B		
b	Bb	

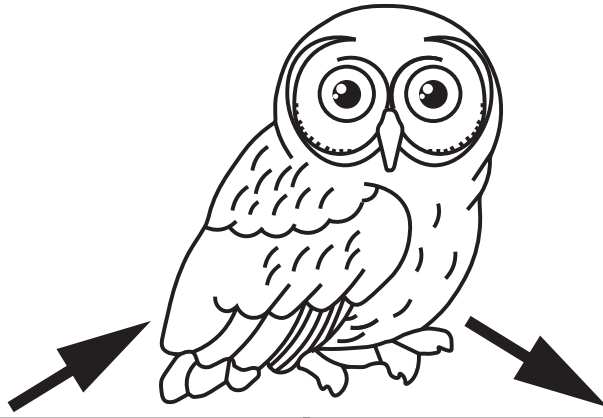
Punnett Square

BB
Bb
bb

Punnett Square Tiles

Sample Item 7

- A. being very quiet
- B. having a fluffy tail
- C. blending in with its environment



Cause	Effect

Cause and Effect Chart

The number
of grey owls
decreased.

Owls have
big eyes.

There is less
snow each
year.

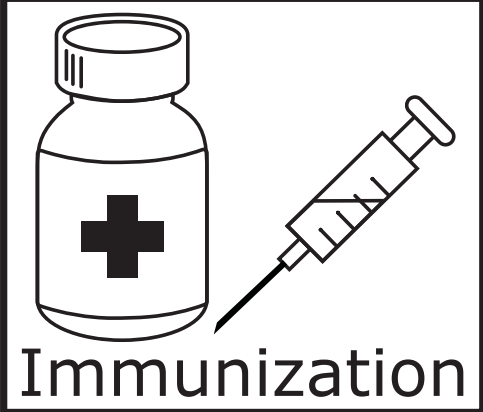
Cause and Effect Statements

Sample Item 9

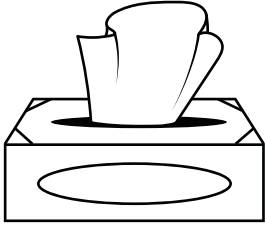
A. bacteria

B. hand sanitizer

Some Treatments of Infectious Diseases

Bacterial	Viral
	 <p>Immunization</p>

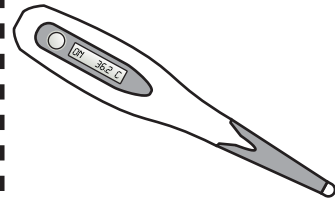
Some Treatments of Infectious Disease Chart



Tissues



Antibiotics



Thermometer

Treatment Tiles