

# → PARENT GUIDE TO ELPT ←

As schools and students begin their final preparations for the English Language Proficiency Test (ELPT), the Louisiana Department of Education (LDOE) created this fact sheet to provide parents with general information about the test, and what you and your child can expect when taking the test.



## KNOW THE TEST

### ENGLISH LANGUAGE PROFICIENCY TEST: ELPT

Students who have been identified as English Learners (ELs) enrolled in grades K-12 take the ELPT. This online assessment is untimed, and measures a student's English proficiency in the four language domains:

- ✓ Reading      ✓ Writing      ✓ Speaking      ✓ Listening

The ELPT assesses the English-language proficiency of students who meet the participation criteria for ELs as they progress from year to year. ELPT draws upon emerging technologies and innovative methods to measure progress, to encourage reclassification relative to grade-appropriate performance, and determine which school systems are meeting accountability goals for ELs.

Results from the ELPT will be used to determine a student's level of English proficiency and to decide which language services and supports the student will need to fully participate in core content classes.

ELs take this assessment until they achieve a rating of "Proficient". A student is "Proficient" when they attain a level of English-language skill necessary to independently produce, interpret, collaborate on and succeed in grade-level, content-related academic tasks in English.

**Even those students who have refused participation in an EL program are required to take ELPT. Students with the most significant disabilities may be eligible to take ELPT Connect. Refer to the [ELPT Connect Parent Guide](#) for more information.**

### ELPT DESIGN AND PERFORMANCE LEVELS

The ELPT is a computer-based test, designed to be engaging and interactive with innovative questions reflecting classroom and real-world scenarios in all four language domains. Teachers do not score any session because the online platform collects all responses (even speaking) for scoring off-site.

The ELPT measures and reports on students' overall English-language proficiency, as well as performance in the language domains of reading, writing, speaking, and listening. The language domains correspond to scores in reporting categories, and then these scores compile to form an overall proficiency determination. The ELPT has five Performance Levels and three Proficiency Determinations. Proficiency requires meeting a **combination of expectations across all four domains**.

| Performance Level | Definition   |
|-------------------|--|
| Level 1           | <b>Beginning:</b> displays few grade-level English-language skills and will benefit from EL program support  |
| Level 2           | <b>Early Intermediate:</b> presents evidence of developing grade-level English-language skills and will benefit from EL program support                            |
| Level 3           | <b>Intermediate:</b> applies some grade-level English-language skills and will benefit from EL program support   |
| Level 4           | <b>Early Advanced:</b> demonstrates English-language skills required for engagement with grade-level academic content instruction at a level comparable to non-ELs |
| Level 5           | <b>Advanced:</b> exhibits superior English-language skills as measured by the ELPT   |

**Students will receive a Performance Level score in each domain as well as an overall Proficiency Level.**

| Proficiency Determination | Definition  |
|---------------------------|---|
| <b>Emerging</b>           | Students are <i>Emerging</i> when they have not yet attained a level of English-language skill necessary to produce, interpret, and collaborate on grade-level, content-related academic tasks in English. Students scoring <i>Emerging</i> are eligible for ongoing program support.         |
| <b>Progressing</b>        | Students are <i>Progressing</i> when, with support, they approach a level of English-language skill necessary to produce, interpret, and collaborate on grade-level, content-related academic tasks in English. Students scoring <i>Progressing</i> are eligible for ongoing program support. |
| <b>Proficient</b>         | Students are <i>Proficient</i> when they attain a level of English-language skill necessary to independently produce, interpret, collaborate on and succeed in grade-level, content-related academic tasks in English. Students scoring <i>Proficient</i> are eligible for reclassification.  |

The Proficiency Level is determined by student performance level in each domain. Additional information will be included with the student's scores.



## ONLINE TESTING SCHEDULE: FEBRUARY 19-MARCH 22, 2024

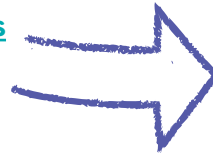
Schools determine the schedule for administering the online tests during this window; therefore, testing days and session rotations will vary by school.

## TEST RESULTS

Schools and school systems will receive ELPT results in May. Each school system will decide how to share this information, but teachers, parents and students will be provided with the student's English proficiency in each domain. The results will include the Domain Performance Level as well as the Overall Proficiency Level.

[View the Parent Guide to the ELPT Student Reports](#)

to learn more about these results and why they matter for your child.



**PARENT GUIDE TO THE ELPT STUDENT REPORTS**

**HOW DID MY CHILD PERFORM ON THE ELPT THIS YEAR?**

This report contains your child's information including:

- overall proficiency level,
- student performance in each of the four language domains, and
- the types of support your child will need next year based on test performance.

The scores are used to help teachers identify students who need additional support in each language area. The information is also used to measure how well schools and school systems are helping English learners achieve higher expectations.

**HOW SHOULD I, OR MY CHILD'S TEACHER, USE THESE RESULTS?**

As a parent, you can use the test results to guide a discussion with your child's teacher(s) about additional supports that may be needed in class and at home.

HERE ARE SOME SUGGESTED QUESTIONS TO ASK WHEN DISCUSSING THE RESULTS WITH YOUR CHILD'S TEACHER(S):

- Where is my child doing well and where is improvement needed?
- What can be done in the classroom to help improve my child's language development?
- How can I help support my child's language learning at home?
- How do we ensure that my child continues to progress?

**HOW DID MY CHILD DO IN COMPARISON TO OTHERS?**

This section includes the school system and state performance averages so you can see how your child's performance compares to that of other students in the same grade and domain. To protect the privacy of students, data may be suppressed when school totals include a small group of students.

**FAMILY Support**

FOR ADDITIONAL TOOLS AND RESOURCES TO HELP YOU SUPPORT STUDENT LEARNING AT HOME, visit the Family Support Toolbox at <https://www.louisianabelieves.com/connections/family-support-toolbox>

LA Connectors for English learners: <https://www.louisianabelieves.com/connections/library/academic-standards>

ELPT Online Tools Training: <https://support.ednet.la.gov/online-tools.html>

Performance Level Descriptors: <https://www.louisianabelieves.com/docs/default-source/assessment/ablt-achievement-level-descriptors.pdf>

DEPARTMENT of EDUCATION Louisiana Believes



## PREPARE FOR THE TEST

### KNOW WHAT YOUR CHILD IS LEARNING

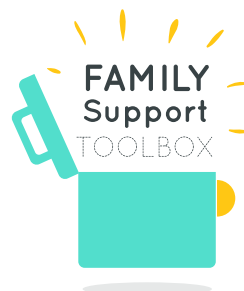
To find out the learning expectations for your student's grade level, take a look at the [LA Connectors for ELs](#). The LA Connectors for ELs provide a connection between language and academic content acquisition. The connectors highlight and amplify the critical aspects of language, knowledge about language, and skills using language needed by ELs as they develop competencies in each course of study. The LA Connectors for ELs allow students to participate in the same academic content and curriculum as native English speakers by providing opportunities to take on complex texts and challenging activities while developing language necessary to master each subject and to effectively participate in the classroom.

#### Other ways to help your child includes:

- Having your child read to you (or a younger sibling).
- Visiting your local library and borrowing audiobooks.
- Attending parent-teacher conferences at your child's school.
- Watching television or listening to music in English.
- Practicing reading and writing in your native language as well (research shows that doing so helps to support English literacy skills).

#### USEFUL LINKS

- [LA Connectors for ELs](#)
- [ELPT Online Tools Training](#)
- [Parent Guide to the ELPT Student Report](#)



**FOR ONLINE ACCESS TO ALL ASSESSMENT RESOURCES, visit the [Family Support Toolbox](#).**

For more information about this or any other statewide assessment, talk to your child's principal or teacher, or email the Department at [assessment@la.gov](mailto:assessment@la.gov).



LOUISIANA DEPARTMENT OF  
**EDUCATION**

Scan the QR Code to  
access the hyperlinks  
within this resource.

