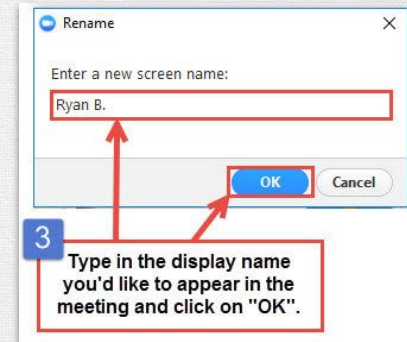
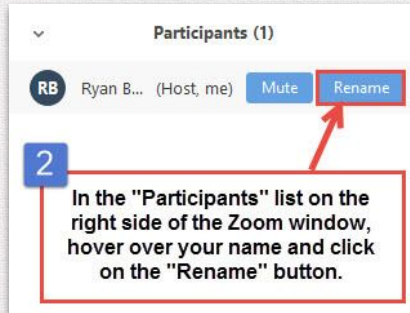
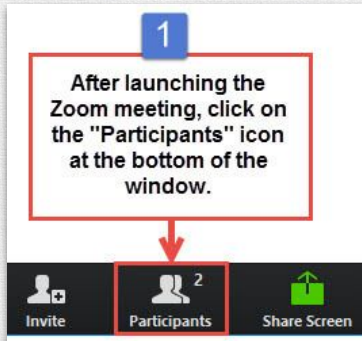
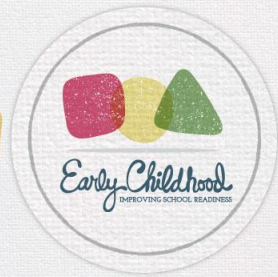


Zoom Name Change Name and Network

1. On your Zoom panel, click on the “Participants” button.
2. Hover the mouse over your name in the “Participants” on the right of the Zoom window. Click on “More” then select “Rename.”
3. Enter your **name** and **network** so it will appear in the Zoom meeting and click on “OK.”



LOUISIANA DEPARTMENT OF EDUCATION



2021 Supply Building and Access Expansion Grant RFA Application Guidance

Agenda

- I. Grant overview
- II. Deliverables and funding
- III. Suggested supply building and access expansion strategies
- IV. Funding and sustainability
- V. Application timeline

Grant Overview



Overview

As part of efforts to increase access, the Louisiana Department of Education is requesting applications focused on community-level strategies and solutions to increase supply of, and access to, quality early childhood care and education.

This is a phased grant opportunity executed over a two year period to provide funding to support initiatives focused on building child care supply and increasing access at the local level that can be tailored to the specific needs of each early childhood community network.

Phased Opportunity

The 2021 Supply Building and Access Expansion Grant will be implemented in three phases over a two year period.

- Funding and technical assistance will be provided at each phase
 - Support will be provided to community networks and identified partners in the completion of a set of deliverables.
- A set of deliverables is also required within each phase.
 - Each set of deliverables must be executed in order to qualify for the next phase of the grant process and to receive the subsequent round of funding.

Grant Phases

Phase 1	Phase 2	Phase 3
Community Access Analysis, Strategic Planning and Design	Strategy Implementation & Sustainability Planning	Long Term Sustainability and Evaluation of Strategy Implementation



Deliverables and Funding

Phase Deliverables and Funding

Phase	Grantee Deliverables	Funding
<p>Phase 1 - Community Access Analysis, Strategic Planning and Design</p> <p>(within 3-6 months of the initial award)</p>	<p>Grantees will submit a plan to increase access to early childhood care and education that is aligned with community needs.</p>	<p>\$100,000 per network for project staffing, business supports, consultants, etc.</p> <p>This funding may be renewable for year two of the project.</p>
<p>Phase 2 - Strategy Implementation & Sustainability Planning</p> <p>(within months 4-12)</p>	<p>Grantees will implement the strategies they developed to build supply and increase access to early childhood care and education.</p>	<p>Up to \$500,000*</p> <p>*Subject to change based on needs determined in Phase 1 of grant</p>
<p>Phase 3 - Long Term Sustainability and Evaluation of Strategy Implementation</p> <p>(within months 5-18)</p>	<p>Grantees will submit a long-term sustainability plan inclusive of information related to scalability to meet additional community-level gaps in access.</p>	<p>Grantees that successfully create new child care supply will be given opportunities to apply for additional funding for seats.</p>



Suggested Supply Building and Access Expansion Strategies

Potential Supply Building and Access Expansion Strategies

Funding will be provided for community network lead agencies to pursue activities that build supply and increase access including, but not limited to:

- Establishing partnerships with existing child care providers to expand access
- Expanding infant and toddler child care classrooms in existing facilities
- Establishing new partnerships to leverage community-based facilities to expand child care options
- Building child care supply in areas with limited to no options for early childhood care and education

Potential Strategies

Establishing Partnerships with Child Care Centers

Networks can increase supply and expand access by establishing partnerships within the community. This can be done in a variety of ways, including, but not limited to:

- Supporting Type I or II child care centers to convert to Type III
- Supporting family child care providers to register and certify to receive CCAP or open a licensed Type III child care center
- Supporting owners and administrators of existing Type III child care centers to expand their services to increase the number and ages of children they are able to serve

Potential Strategies

Expanding Infant and Toddler Access

Increasing infant and toddler access in existing facilities is another way networks can build supply and expand access. Strategies to do this include:

- Adding an infant or toddler classroom to an existing Type III child care center
- Supporting existing Type III child care centers in the hiring, onboarding, and training of additional teachers to meet the staffing needs associated with increasing access or opening a new classroom

Potential Strategies

Establishing New Community Partnerships

Leveraging community-based facilities to expand child care options is an additional strategy networks can utilize. This can be done by:

- Opening licensed classrooms within existing facilities (community-based organization facility, church, business, or school)
- Establishing satellite locations within existing facilities (a current Type III child care provider operates a space licensed for child care within another facility)
- Leasing a building already modified for licensed child care
- Equipping a facility with the required furnishings, materials and equipment needed for an early childhood site
- Developing initiatives to hire early childhood teachers and staff who are unemployed and seeking to return to the early childhood workforce

Potential Strategies

Building Child Care Supply in Areas of Need

Building child care supply in areas with limited to no options for early childhood care and education can also be used to build supply and expand access. This can be done in a variety of ways, including, but not limited to:

- Establishing child care within communities without licensed Type III child care centers
- Identifying and supporting new potential owners, administrators, and teachers to staff a new child care site
- Supporting owners of Type III child care centers to expand their business into communities with limited to no access to quality child care

Funding and Sustainability



Planning for Success

All networks receiving this, and other grants related to access, will be required to create a funding and sustainability plan to ensure that these seats are tenable and lasting beyond the timeframe of the grants.

Networks will have an additional opportunity to apply for, and receive, additional funding to support the implementation of sustainability planning in Phase 2. This will be in addition to the technical assistance and support focusing on funding and sustainability provided through the 2021 Supply Building and Access Expansion Grant opportunity.

Grantees that successfully create new child care supply through the 2021 Supply Building and Access Expansion Grant will also be given opportunities to apply for additional funding for seats in the future.

Application Timeline



Supply Building and Access Expansion Grant Application Timeline

Date	Activity
March 30	The Department releases the Request for Applications for the 2021 Supply Building and Access Grant.
April 1	The Word version of the application will be sent to all lead agency contacts.
April 28	Applicants submit an Intent to Apply via Google Form by 5 p.m.
May 26	Applicants submit a final application via Google Form by 5 p.m.
Week of May 31	The Department notifies recipients of the grant.