

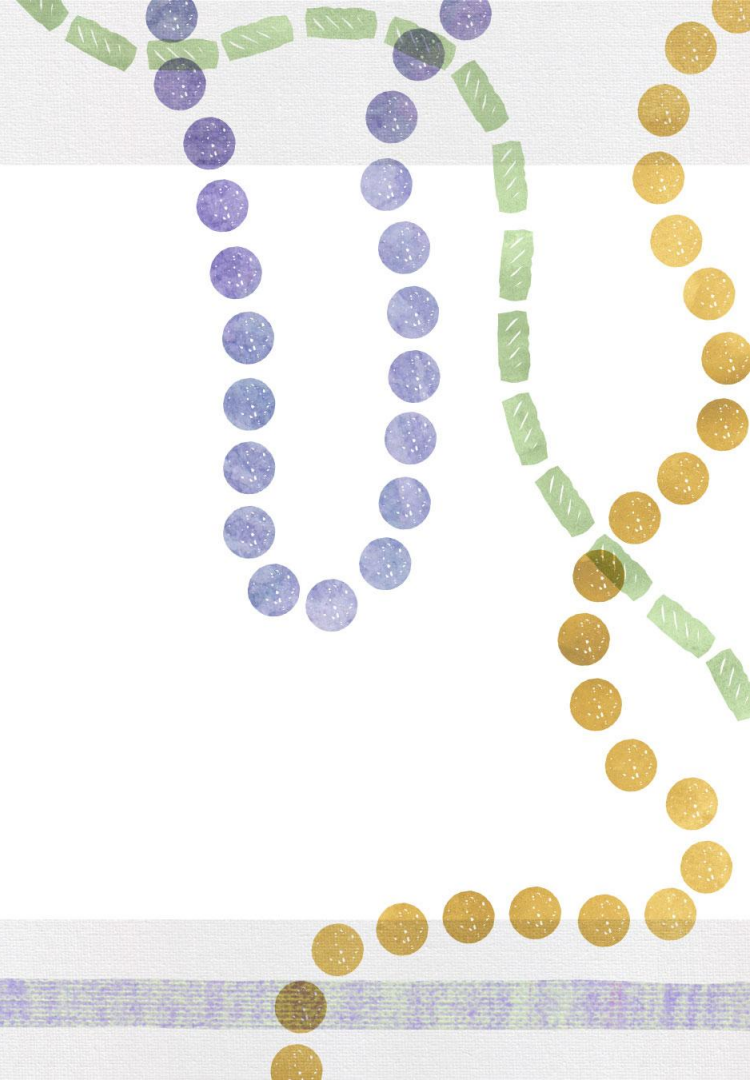


Fast Forward Implementation
August 13, 2021

Agenda

- [Fast Forward](#) overview
- [BESE approved pathways](#)
- Considering diploma pathways and associate degree types
- Adopting BESE approved pathways
- Breaking down barriers in implementation
- Creating new pathways

Fast Forward Overview

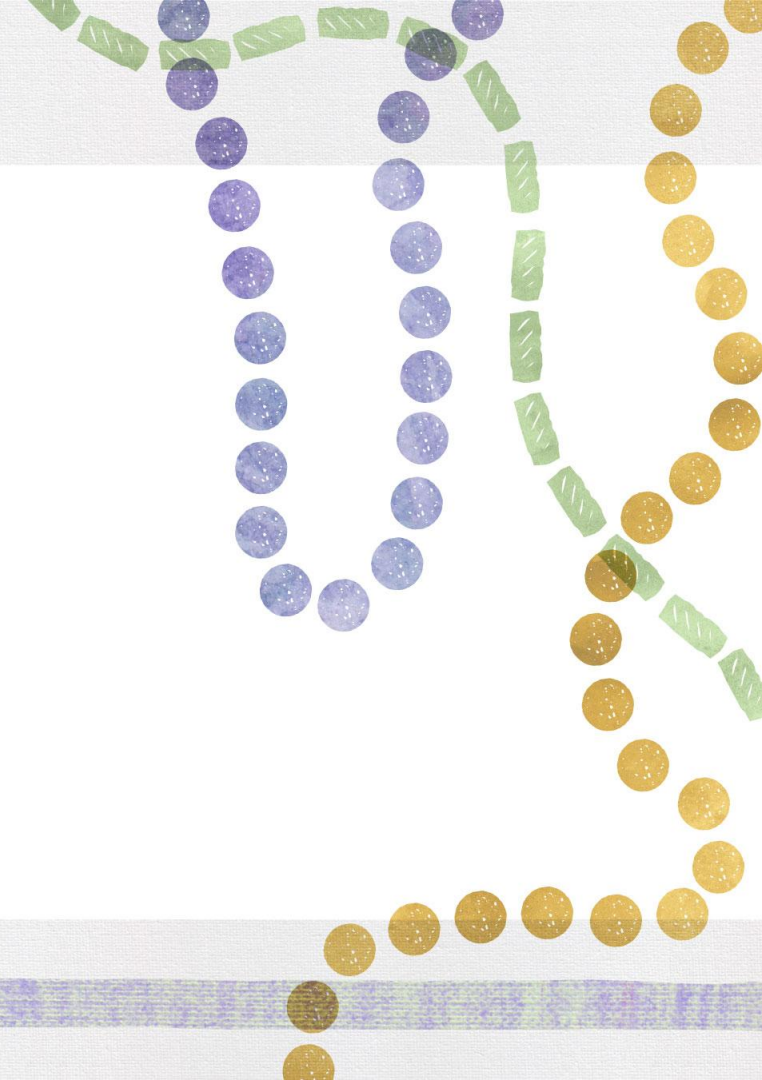


What is Fast Forward?

[Fast Forward](#) is a program which will allow students to earn either a [Jump Start TOPS Tech Career Diploma](#) or a [TOPS University Diploma](#) while dually earning an associate degree or participating in a Louisiana Workforce Commission recognized [pre-apprenticeship or apprenticeship](#) that either prepares graduates for career or continuing postsecondary education.

In this program, students spend the majority of grades 9 and 10 on the high school campus earning core graduation requirements. In grades 11 and 12 they spend the majority of time on the postsecondary campus or Board of Regents approved satellite site dually enrolled in courses to complete graduation requirements as well as earning an associate degree or participating in a pre-apprenticeship or apprenticeship opportunity.

BESE Approved Pathways



Fast Forward Grant Lead School Systems

RLMA	School System
1	Jefferson
2	East Baton Rouge
3	Assumption
4	St. Landry
5	Vernon
6	Rapides
7	DeSoto
8	Richland

Approved Pathways

Region 1	Region 2	Region 3
<p>Apprenticeships</p> <ul style="list-style-type: none"> Apprenticeship Nursing Jump Start Ochsner Health Apprenticeship Nursing TOPS University Ochsner Health <p>Associate - Jump Start 2.0</p> <p>Delgado Community College</p> <ul style="list-style-type: none"> Applied Science Cloud Computing <p>Northshore Technical College</p> <ul style="list-style-type: none"> Applied Science Machine Tool Technology <p>Associate - TOPS University</p> <p>Delgado Community College</p> <ul style="list-style-type: none"> Science Business Administration Applied Science Cloud Computing <p>Nunez Community College</p> <ul style="list-style-type: none"> Applied Science Coastal Studies and GIS Technology Applied Science Process Technology Applied Science Aerospace Manufacturing 	<p>Associate - Jump Start 2.0</p> <p>Northshore Technical College</p> <ul style="list-style-type: none"> Applied Science Technical Studies <p>Associate - TOPS University</p> <p>Baton Rouge Community College</p> <ul style="list-style-type: none"> Applied Science Computing and Information Systems <p>Southeastern Louisiana University</p> <ul style="list-style-type: none"> Applied Science Industrial Technology <p>Northshore Technical Community College</p> <ul style="list-style-type: none"> Louisiana Transfer Degree General Business (Logistics & Supply Chain) 	<p>Associate - TOPS University</p> <p>Fletcher Technical Community College</p> <ul style="list-style-type: none"> Louisiana Transfer Degree Associate of Arts (Humanities)

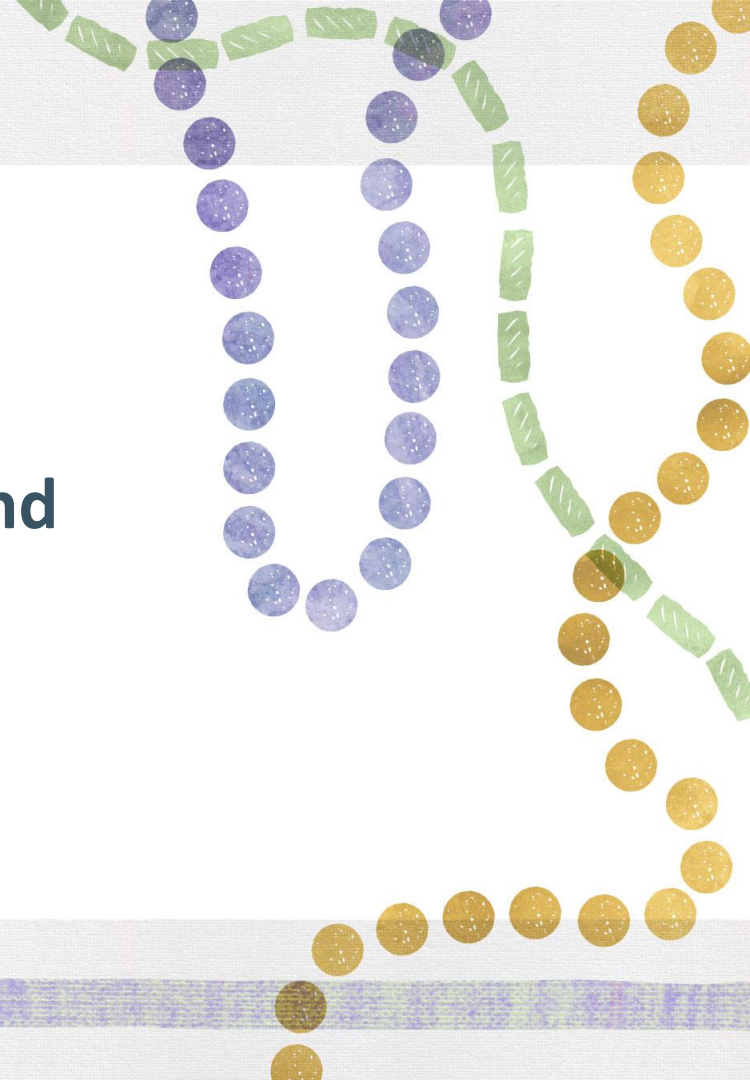
Approved Pathways

Region 4	Region 5	Region 6
<p>Associate - Jump Start 2.0 Louisiana State University-Eunice and South Louisiana Community College</p> <ul style="list-style-type: none"> • Applied Science Information Technology <p>South Louisiana Community College</p> <ul style="list-style-type: none"> • Applied Science Culinary Arts and Occupations • Applied Science Technical Studies (Industrial Marine Electronics Technology) • Applied Science Technical Studies (Welding) • Applied Science Information Technology <p>Associate - TOPS University Louisiana State University-Eunice and South Louisiana Community College</p> <ul style="list-style-type: none"> • Applied Science Information Technology <p>South Louisiana Community College</p> <ul style="list-style-type: none"> • Applied Science Culinary Arts and Occupations • Applied Science Technical Studies (Industrial Marine Electronics Technology) • Applied Science Technical Studies (Welding) • Applied Science Information Technology 	<p>Associate - Jump Start 2.0 SOWELA Technical Community College</p> <ul style="list-style-type: none"> • Applied Science Business Administration (Hospitality Management) <p>Associate - TOPS University Northwestern State University</p> <ul style="list-style-type: none"> • Louisiana Transfer Degree Applied Science General Studies (options of concentration in Biology, Nursing, Business Administration, Education, Psychology) 	<p>Associate - Jump Start 2.0 Central Louisiana Technical College</p> <ul style="list-style-type: none"> • Applied Science Practical Nursing

Approved Pathways

Region 7	Region 8
<p>Apprenticeships</p> <ul style="list-style-type: none"> Pre-Apprenticeship Electrical Jump Start Electrical Training Alliance <p>Associate - Jump Start 2.0</p> <p>Central Louisiana Technical Community College</p> <ul style="list-style-type: none"> Applied Science Business Office Administration <p>Southern University-Shreveport</p> <ul style="list-style-type: none"> Science Computer Science <p>Associate - TOPS University</p> <p>Northwestern State University</p> <ul style="list-style-type: none"> Applied Science General Studies <p>Southern University-Shreveport</p> <ul style="list-style-type: none"> Applied Science Engineering Technology 	<p>Associate - Jump Start 2.0</p> <p>Louisiana Delta Community College, Gen. Ed. courses can be taken at Grambling</p> <ul style="list-style-type: none"> Applied Science Electrician Applied Science Welding <p>Louisiana Delta Community College</p> <ul style="list-style-type: none"> Applied Science Business Office Administration Applied Science Industrial Instrumentation Technology <p>Associate - TOPS University</p> <p>Louisiana Delta Community College</p> <ul style="list-style-type: none"> Science Teaching Louisiana Transfer Degree Biological Sciences <p>Louisiana Delta Community College</p> <ul style="list-style-type: none"> Louisiana Transfer General Studies (Arts and Humanities)

Considering Diploma Pathways and Associate Degree Types



Degree Types and Credit Transferability

<p>Technical Associate Degree Associate of Applied Science</p>	<p>These are terminal degrees. They typically include approximately 15 hours of general education courses which are transferable to a 4 year institution. Other coursework may or may not transfer to a 4 year degree program. These degrees are designed to enable students to have the skills to work in a specific field immediately after graduation.</p>
<p><u>Louisiana Transfer Associate Degree (LT)</u> or Associate of Science</p>	<p>These are universal transfer degrees from a postsecondary campus. The LT associate degree curriculums are consistent at all LCTCS campuses and allow students to seamlessly transfer to a Louisiana public 4 year institution upon earning the degree with 60 transferable hours.</p>

Adopting BESE Approved Pathways



Adopting Approved Pathways

- Review the pathways created in your region and **approved postsecondary institutions** or apprenticeship organizations to decide which pathways are best suited for the student population and the institutions to which students will have access
- Access the pathway frameworks on the [Fast Forward](#) landing page to see the coursework progressions required to earn the associate degree or participate in an apprenticeship
- Contact the postsecondary institution or apprenticeship organization to ensure there are no changes in the course catalog/apprenticeship requirements that might require a tweaking of the framework
- Note that these are only “frameworks” and course sequencing may be shifted to meet individual school and/or postsecondary scheduling requirements
- Courses taken at a non-approved postsecondary institution must be identical in content to the approved institution and/or be on the BoR articulation matrix

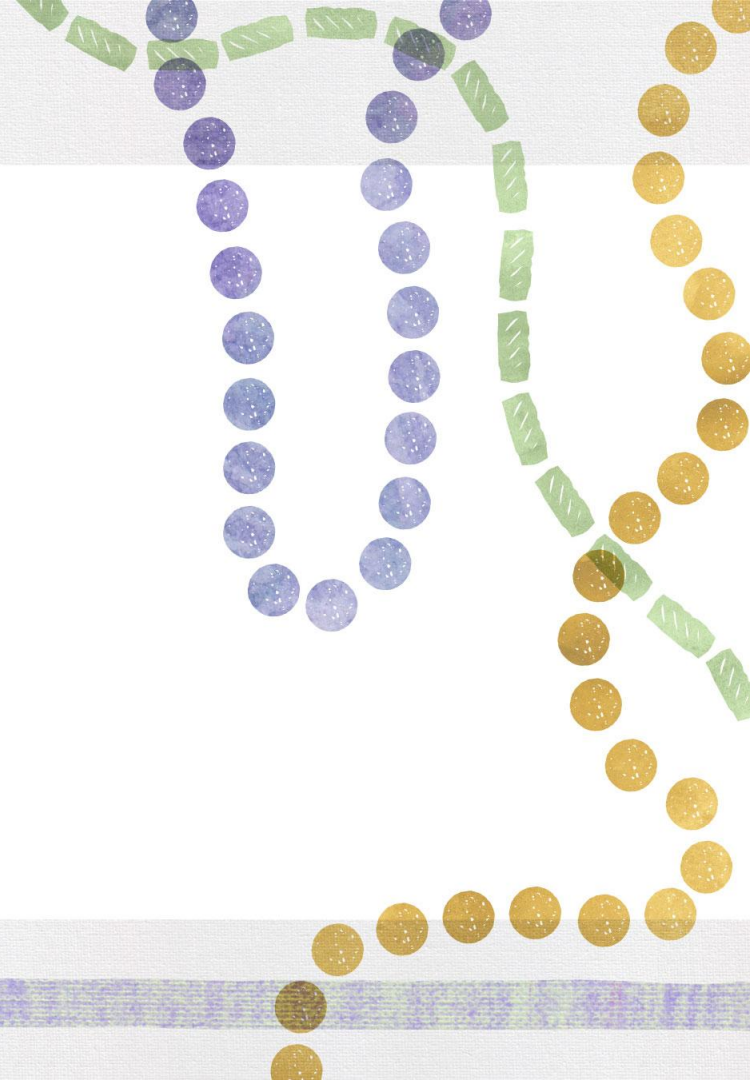
Breaking Down Barriers in Implementation



What are some possible barriers?

- Identifying the students ready for these pathways
- [Postsecondary admission requirements](#)
- Identifying the appropriate pathways based on student future aspirations
- Meeting all **current** high school diploma and postsecondary associate degree or apprenticeship requirements
- Thoughtful scheduling (especially in grades 9 and 10)
- Shifts in course choices (especially for Jump Start students)
- Funding

Creating New Pathways



Collaboration

- Reach out to neighboring schools and/or school systems in the region
- Meet with local economic development organizations and business and industry partners
- Reach out to and meet with local colleges and universities, satellite campuses and/or [state approved apprenticeship organizations](#)
- Establish a working group including counselors and postsecondary or apprenticeship scheduling personnel and/or curriculum experts

Fast Forward Pathway Types

- Jump Start 2.0 Pathway
- TOPS University Pathway
- High-Demand Apprenticeship Pathway

Descriptions of these pathways can be found on the [Fast Forward landing page](#).

Parts of a Fast Forward Pathway

Fast Forward pathways are developed by diploma type (TOPS University or Jump Start TOPS Tech Career diploma). Each pathway framework should include:

- Pathway name (official name of degree/concentration or apprenticeship)
- Postsecondary or apprenticeship partner
- Overview
- Capstone credentials ([regional, basic, advanced](#) and Fast Forward advanced plus)
- Framework schedule for grades 9-12

Use the Fast Forward Planning Template which is located on the [Fast Forward landing page](#) on the Louisiana Believes website.

Mapping a Framework Schedule

- Have a skilled working group
- Address [high school diploma graduation requirements](#) first (use official Louisiana course titles and course codes)
- Include the official name and alpha/numeric code for all postsecondary courses as well as the high school equivalent
- Ensure realistic course scheduling and student expectations
- Schedule to ensure seamless entry and exit points

LDOE Evaluation and BESE Approval

- Finalized pathways should be on the official template
- Email frameworks to stephanie.marcum@la.gov for an LDOE review of diploma requirements and high school course equivalents
- Revise pathways if needed
- BoR review of postsecondary requirements
- Revise pathways if needed
- Final pathways due by April 1, 2022
- Graduation Review panel approval of pathways in April of 2022
- BESE approval of pathways in June of 2022

Fast Forward Technical Assistance

- More information or questions about Fast Forward
- Help with implementing currently approved pathways
- Technical assistance in developing new pathways
- Introductions to school systems that have successfully developed pathways

For assistance with anything related to Fast Forward, please contact stephanie.marcum@la.gov.

Visit [Fast Forward](#) on the Louisiana Believes website.