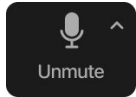
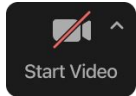


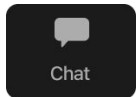
# Zoom Meeting Preparation



- Please make sure your phone or computer is muted to minimize background noise.
  - To do this, hover over the bottom left-hand side of your screen and click “Mute.”



- Please make sure you have turned off your camera to save bandwidth and prevent any connectivity issues.
  - To do this, hover over the bottom left-hand side of your screen and click “Stop Video.”



- Please submit questions during the presentation in the “Chat” function located on the bottom of your screen.

If you require an interpreter or have other accessibility needs for future LDOE meetings, please contact [LDOEcommunications@la.gov](mailto:LDOEcommunications@la.gov).



# Zoom Meeting Protocol

## Participant Naming Conventions

Please change your Zoom name to reflect your actual name and the Community Network you represent.

## Questions

During the presentation, please add any questions to the chat. Questions will be answered at the end of the webinar. If you enter a question in the chat, please include your e-mail address, in case our team needs to follow up with you further.

## Notice of AI Recording on Zoom

Please be advised that the LDOE does not permit artificial intelligence (AI) meeting recorders to join online meetings and does not consent to having this meeting recorded or transcribed.

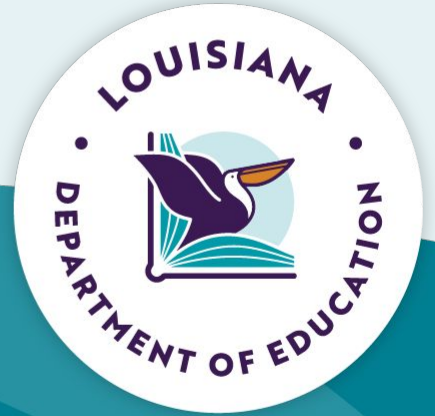


# Community Network Lead Agency Updates Webinar



April 14, 2026

# Webinar Purpose and Objectives



# Webinar Purpose and Objectives

**Purpose:** The Community Network Lead Agency (CNLA) Updates webinar provides CNLA administrators with information, updates, and reminders related to current LDOE Early Childhood Care and Education initiatives and events.

## Objectives:

Community Network Lead Agencies will

- Receive new information and updates
- Receive information on today's featured topics:
  - *St. Charles Parish Coaching Partnerships*
- Review reminders about upcoming deadlines



# Agenda

- I. Early Childhood Community Network Updates
- II. Featured Topic:
  - A. *St. Charles Parish Coaching Partnerships*
- III. Early Childhood Reminders
- IV. Upcoming Events and Deadlines



# Early Childhood Accountability



# Early Childhood Lead Teacher Survey

The LDOE released the annual [Early Childhood Lead Teacher Survey](#) last week. The purpose of this survey is to gather feedback from lead teachers in all early childhood settings.

The Department will use lead teacher data to publish information on teacher support as part of the Community Network Performance Profiles released in November 2026.

- Educators received the survey link through their TS GOLD® e-mail address.
- **The survey will close on April 30, 2026.**
- All program partners should ensure that lead teachers complete this survey.



# Preliminary Informational Metrics

In preparation for Data Certification this summer, Community Network Lead Agencies should begin working with providers to complete the following by May 15, 2026:

- Review the data in the [Early Childhood CLASS® Portal](#) and
- Make any changes directly in the [Early Childhood CLASS® Portal](#)

All informational metrics should reflect the data captured on October 1, 2025.

**Only the data** in the [Early Childhood CLASS® Portal](#) will be used to generate Informational Metrics for network and site Performance Profiles.

# Preliminary Informational Metrics



Add or Update Classroom: X

Classroom Name:	Elephants
Classroom Configuration:	Pre-K
Lead Teacher:	Alicia Franklin
Is this a virtual classroom? :	No
Curriculum :	Frog Street Press - Frog Street Pre-K, ECE Agt
Adult:Child Ratio : <i>(Teacher/Child Ratios Guidance)</i>	Gold
Teacher Name as Of October 1:	Alicia Franklin
October 1 Teacher Degree:	Masters +
Teacher Certification as of Oct. 1, for teacher on Oct. 1:	Yes
Certification Number:	091608

Submit

Delete the Classroom

## Instructions:

- Show Closed Classes
- Show Cancelled Observations

The following metrics, captured as of October 1, 2025, should be reviewed for accuracy and updated via the [Early Childhood CLASS® Portal](#) by May 15, 2026:

- Curriculum
- [Ratio](#)
- Teacher Name as of October 1
- Teacher Degree as of October 1
- Teacher Certification
- Certification Number

# EC CLASS<sup>®</sup> Portal



Per *Bulletin 140*, CNLAs are required to enter two observations in the EC CLASS<sup>®</sup> Portal for the 2025-2026 academic year:

- One observation in Fall 2025, entered by December 15
- One observation in Spring 2026, entered by May 15

# 2026-2027 Academic Approval Renewal

Providers must renew their Academic Approval by submitting the 2026-2027 Program Partner Assurances to the LDOE **no later than May 31, 2026.**

- Signed Program Partner Assurances must be submitted through the designated 2026-2027 Program Partner Assurances online form, which was distributed via e-mail on April 6, 2026.
  - **Paper submissions will not be accepted.**
- Upon successful submission of the assurances, 2026-2027 Academic Approval certificates will be automatically generated and sent to the e-mail address provided in the online form.
- **Providers should** retain a copy for their records and **post their 2026-2027 Academic Approval certificate starting July 1, 2026.**



# LA 4, NSECD, and CNLA Allocations

Preliminary 2026-2027 LA 4, NSECD, and CNLA allocations are scheduled to be voted on during the April 15, 2026 BESE meeting:

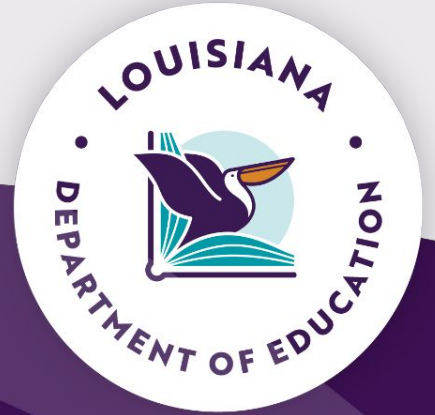
- Networks and sites should have received a preliminary notice of award during the week of February 23, 2026.
- An additional notice of BESE approval will be sent after the BESE meeting, on April 16, 2026.
- **Final amounts will be subject to legislative appropriation.**

Early Childhood Accountability

Please contact [accountability@la.gov](mailto:accountability@la.gov) with questions.



# Early Childhood Community Network Updates and Reminders



# Early Childhood Curriculum Update

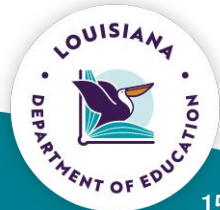
The LDOE Instructional Materials Review (IMR) team is conducting ongoing new curriculum reviews:

- These reviews are designed to evaluate the alignment of instructional materials with the revised [2024 Early Learning and Development Standards \(ELDS\)](#) and ensure that the materials used in classrooms support high-quality teaching and learning.
- A new Tier I Curriculum List for ECE is being published as IMR reviews are completed.
  - The updated Tier I list will be located on the [IMR webpage](#) “Early Childhood Instructional Materials” dropdown and will be populated on an ongoing basis as reviews are complete.
  - Currently, three curricula have completed the IMR process and have been approved as Tier I:
    - Great Minds PBC -Eureka Math Squared, Level PK -ECE, Ages 4-5
    - Frog Street Press, LLC -Frog Street Preschool Louisiana, Threes
    - Frog Street Press, LLC -Frog Street Pre-K Louisiana, ECE Ages 4-5

*Please note: Newly-approved Frog Street curriculum now has “Louisiana” in the title. All previous versions will be archived.*

Teaching and Learning Reminders & Updates

Please contact [caitlyn.robinson@la.gov](mailto:caitlyn.robinson@la.gov) with questions.



# Early Childhood Literacy Initiative Allocation

The LDOE Early Childhood Literacy Initiative allocation was approved during the January 2026 BESE meeting. This funding opportunity runs from February 1 - June 30, 2026 and includes the following:

- **Curriculum Allocation (Available to CNLAs and CCR&Rs):** The curriculum allocation will be used to purchase newly-rated high-quality instructional materials (rated as Tier I) that align to the updated [Early Learning and Development Standards](#) and LDOE IMR review processes.
  - CNLAs should work with schools to purchase newly-rated Tier I curriculum and curriculum-aligned professional development requested by school-based publicly funded pre-K classrooms.
  - CCR&Rs should work with child care sites to purchase newly-rated Tier I curriculum and curriculum-aligned professional development requested for infant, toddler, and preschool classrooms by Type III child care and FCC sites who have opted into Academic Approval.

Upcoming Events and Deadlines  
Please contact [caitlyn.robinson@la.gov](mailto:caitlyn.robinson@la.gov) with questions.

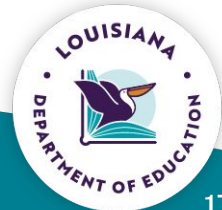


# Early Childhood Literacy Initiative Allocation

The LDOE Early Childhood Literacy Initiative allocation was approved during the January 2026 BESE meeting. This funding opportunity runs from February 1 - June 30, 2026 and includes the following:

- **SoR Training Stipend Allocation (available to CNLAs):** The SoR Training stipend allocation will be used to provide LDOE-created SoR training to support early identification and interventions, including for teachers of young children with disabilities who teach pre-K.
  - This portion of the allocation offered through CNLAs to school-based pre-K educators will fund \$250 stipends for the completion of 3 LDOE Science of Reading pre-K modules through the LDOE Canopy platform. These modules are now available in the [Louisiana Professional Learning Platform](#).
  - Please note: There will be additional information regarding funding opportunities for training stipends for publicly funded child care center teachers, Early Head Start/Head Start teachers, Family Child Care educators with Academic Approval, and NSECD teachers in publicly funded sites shared at a later date.

Upcoming Events and Deadlines  
Please contact [caitlyn.robinson@la.gov](mailto:caitlyn.robinson@la.gov) with questions.

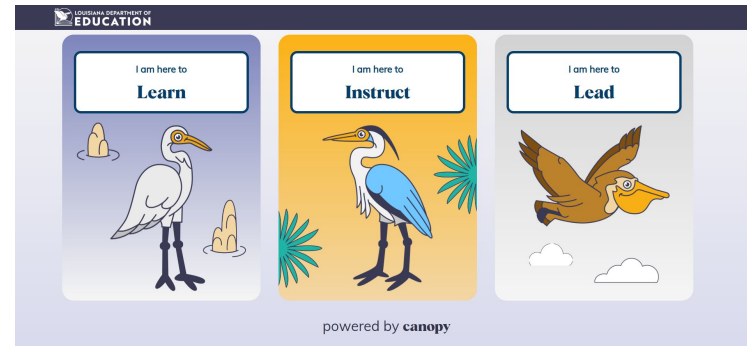


# SoR Training

## SoR Training Modules

The Early Childhood *Science and Art of Reading* courses are now available:

- The Early Childhood *Science and Art of Reading* professional learning series aims to equip educators with a shared understanding of the knowledge and skills needed to implement scientifically-based literacy instruction. This professional development series is housed in our [Louisiana Professional Learning Platform](#).
- Early Childhood Science and Art of Reading Course code: **C100N1N9**



Upcoming Events and Deadlines  
Please contact [caitlyn.robinson@la.gov](mailto:caitlyn.robinson@la.gov) with questions.

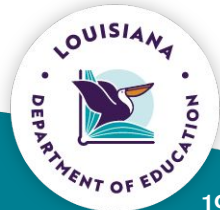


# PDG Family-Centered Summits and YCWD PDG Office Hours

The LDOE is excited to announce funding through the Preschool Development Grant (PDG) for regional Family-Centered Summits:

- Through Family-Centered Summits, Louisiana aims to create a more family-centered early childhood system in which families feel informed, supported, and empowered to actively support their child's learning and development.
- Ready Start Networks (RSNs) Child Care Resource and Referral Agencies (CCR&Rs) will utilize funding to engage all families interested in early care and education.
- An informational webinar will be held on April 21 at 3:00 p.m.
  - Webinar Link: <https://ldoe.zoom.us/j/98046357622>
  - Meeting ID: 98046357622
  - Passcode: 296449

Teaching and Learning Reminders & Updates  
Please contact [caitlyn.robinson@la.gov](mailto:caitlyn.robinson@la.gov) with questions.



# PDG Literacy Initiative Office Hours

The LDOE is excited to announce funding through the Preschool Development Grant (PDG) to strengthen early language and literacy instruction for children ages birth through five across Louisiana's publicly funded early learning systems:

- CCR&Rs and CNLAs will support this initiative to strengthen early language and emergent literacy instruction for children from birth through age five across Louisiana's publicly funded early learning systems.
- An informational webinar will be held on April 23 at 3:00 p.m.
  - Webinar Link: <https://ldoe.zoom.us/j/94044731297>
  - Meeting ID: 940 4473 1297
  - Passcode: 951789

Teaching and Learning Reminders & Updates

Please contact [caitlyn.robinson@la.gov](mailto:caitlyn.robinson@la.gov) with questions.



# Featured Topic:

St. Charles Parish

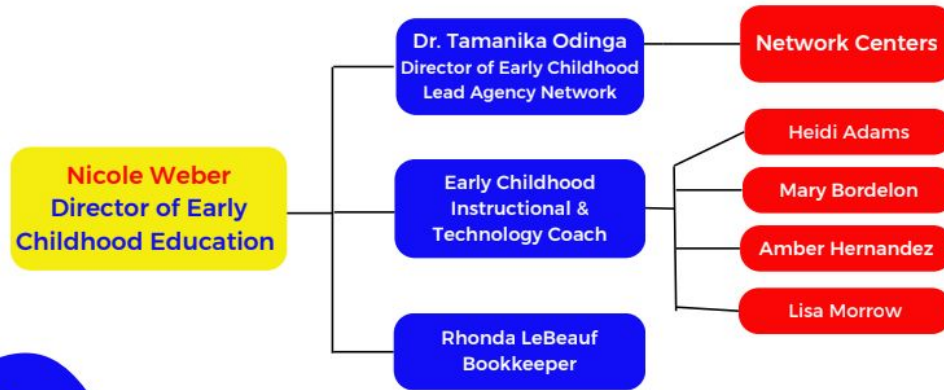
*Coaching Partnerships Strengthen Early Learning*



# St. Charles Parish Public Schools CNLA & RSN

Presented by: Nicole Weber & Dr. Tamanika Odinga

## Coaching Partnership Strengthens Early Learning



### Fun Facts:

84 classrooms from birth-PK4

4 EC coaches

8 Child Care Centers

8 School Sites

*You and I...  
We are*



## Previous Structure:

- Each coach was assigned to a school(s) and a child care center (s)
- The scope of work was wide and narrow

The role of an Early Childhood Coach is to support and guide early childhood educators in improving their teaching practices to enhance overall program quality.

- Provide ongoing and targeted feedback
- Model best practices
- Facilitate professional learning sessions

- Conduct classroom observations
- Analyze data
- Support collaborative learning
- Support individual staff needs

- Focus on children's developmental stages
- Support curriculum implementation
- Create high-quality learning environments

## What does coaching look like?

### Direct Teaching:

- Providing explicit instruction on specific skills or concepts.
- Guiding children or educators step-by-step through tasks or strategies.

### Observation and Providing Feedback:

- Observing children or educators in action to identify strengths and areas for improvement.
- Offering constructive, timely, and actionable feedback to refine practices.

### Modeling:

- Demonstrating desired behaviors, teaching methods, or interactions.
- Showing real-life examples of effective practices for children or educators to emulate.

### Copanning:

- Collaborating with educators to design lessons, activities, or interventions.
- Brainstorming strategies together to address specific goals or challenges.

Early Childhood  
Department



**“We” knew something had to change.**

**We...Directors, School Administration, Coaches, Staff**

**We**

- **listened**
- **encouraged feedback**
- **supported communication**



We have one goal in mind, which is to ensure our children are all kindergarten-ready



Comfortable being uncomfortable  
to making the changes

# Time to refocus

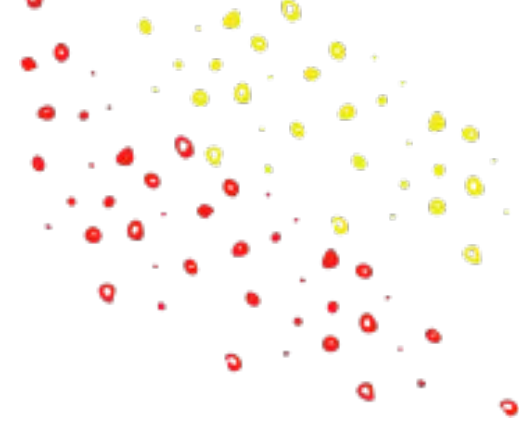
- Google Survey sent out to sites in November to gain an understanding of their views on the current coaching supports and their individual needs
- Analyze Fall 2025 CLASS Observation scores
- Coaches sorted staff by areas of need and levels of support
- Coaching plans are collaborative and have shown immediate results



## Varied types of support

- Side-by-side/co-teaching
- Modeling of lessons
- Video reflections
- Google Classroom for SPED teachers
- In-the moment feedback
- Planning for success
- Coaching plans to document

LEARNING  
is a  
CONTINUOUS  
LIFESTYLE



## Considerations

- How does the staff best respond to coaching?
- Did you make a CLASS connection?
- Did you relate to developmentally appropriate best practices?
- Is the curriculum being utilized?

# Sample coaching plan for a PK 4 Classroom Teacher

## Planning Phase

**Date:** 2.11.2026

- Meet with Ashley to go over questions she preplanned for Read-Aloud, Literacy (journal), and Centers.
- Challenged her to think about how she would scaffold the questions (level up, or support down).
- Talked through questions and question prompts during the different times mentioned above.

**Date:** 2.24.2026

- [Planned Questions](#)
- Meet with Ashley to go over the chart of planned questions to use as she plans and prepares for next week's lessons.
- Due date of 2/27/2026 to have the chart filled out so coach can review it
- Talked through that Read Aloud is an easier time to get questions, but we need to intentionally plan all times for the day
- Told her that I will do a baseline observation score for Concept Development: Analysis and Reasoning to see where she is with me scoring and then in a few weeks we will do it again to see growth

<p><b>2.24.2026</b></p> <p>Completed a baseline pop-in for Concept Development: Analysis and Reasoning See Observation Notes Baseline Score: Mid-level 4</p>	<p><b>2.24.2026</b></p> <p><a href="#">Observation Notes</a></p>	<ul style="list-style-type: none"><li> <input checked="" type="checkbox"/> Complete Planned Questions for next week lessons</li><li> <input checked="" type="checkbox"/> Complete Observation Notes and Reflection</li><li> <input checked="" type="checkbox"/> Complete Teacher Reflection</li></ul>
--	--	--

# Sample coaching plan for a PK 3 Child Care Instructor

I modeled a writing small group that aligned the theme, the letters and print concepts Kyla taught in morning message, and was high CLASS Concept Development. I compared my writing lesson to her writing lesson, and they were very similar! Some differences included trying to practice some pretend writing using letter-like forms copied from the board; the focus on one insect instead of 3; using Fanny to present the lesson and then have students "read" their writing to her and getting a hug from Fanny.

## Here are some of the reminders that I gave her:

- She is strong with planning and teaching; plan to lead the small group that will provide the most questions and language.
- If the behavior isn't managed, the time spent redirecting will take away from those strong plans.
- She can be a little more strict with the expectations on the days she is NOT getting observed. This group needs a little more guidance to use gentle hands and listening ears.

## Next Steps for Kyla:

- She said that she does the breathing strategies and absent students. She will plan for me to see that next week.

## Next Steps for Coach

- Plan a short social-emotional/kindness lesson to be used at the beginning of each day. I'm thinking of the "Connect" activity from Frog Street Greeting Circle. These activities are short, sweet, and build a positive classroom environment. I will model this when I come next week-  
**Thursday.**
- Schedule a day to plan with Kyla for her formal observation.

# Putting it altogether

Trust

Staff	Fall CLASS Score Instructional Support Domain	Spring CLASS Score Instructional Support Domain
PK4 School Based	3.83	5.92
PK 4 School Based	4.5	6.08
PK 3 Child Care Center	3.58	3.67
PK3 Child Care Center	2.58	4.17
Infant Teacher	6.25	6.44
Toddler	4.85	6.15

Intentional Planning

Developmentally  
Appropriate Practice

Reflection

Grouping  
students

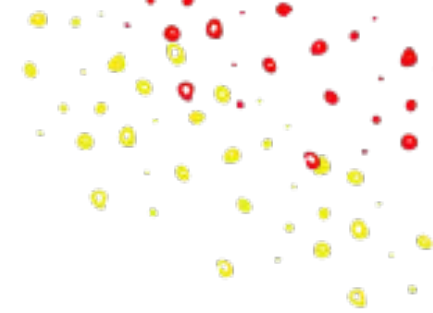
Open & honest  
communication

Valued Added

Time

Understanding of CLASS Rubric

# Next steps:



- Analyze CLASS data
- Analyze student data (TSG, PELI, District Assessments)
- Plan for strategic Professional Development Sessions
- Leadership Development

We...Grow Educators to Grow



Students

*Early Childhood  
Department*



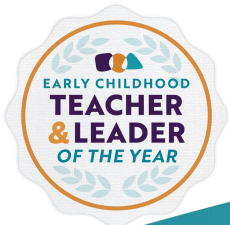
# Upcoming Events and Deadlines



# Early Childhood Teacher and Leader of the Year

The LDOE has announced the Early Childhood Teacher and Leader of the Year Honorees for the 2027 academic year!

- In the fall the LDOE received a record number of 198 nominations: for 116 teachers and 82 leaders.
  - These nominations represent 32 different parishes across Louisiana.



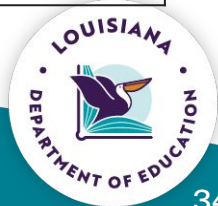
Recognizing Early Childhood Professionals

2025 Quarter 1 Report



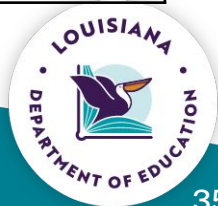
# Early Childhood Teacher of the Year Honorees Announced

2027 Teacher of the Year Honorees		
Honoree Name	Parish	Site Name
Vanessa Baltazar	East Baton Rouge Parish	LSU Early Childhood Education Laboratory Preschool
Jeannine Danos	Plaquemines Parish	South Plaquemines Children's Center
Tangi Ambeau Flowers	Ascension Parish	Little Learner's Preparatory Academy
Jillian Graves	St. James Parish	St. Louis Academy Head Start
Kristy Short	Lafourche Parish	Thibodaux Head Start



# Early Childhood Leader of the Year Honorees Announced

2027 Leader of the Year Honorees		
Honoree Name	Parish	Site Name
Cheryl Morrison Champagne	St. Tammany Parish	Tender Years
Sarah Corley	Rapides Parish	Louisiana State University at Alexandria Children's Center
Jamalynn Lewis	Jefferson Parish	New Horizon Learning Academy
Niki Mills	West Feliciana Parish	St. Francisville United Methodist Early Learning Center
Sarah Thibodeaux	Vermillion Parish	Bright Beginnings Learning Center



# NEW: Optional CNLA Collaborative Office Hours

CNLAs are invited to attend an optional CNLA Collaborative Office Hours call where CNLAs can invite colleagues, bring questions, send topics for breakout discussions, and connect with colleagues on initiatives and topics from the Monthly CNLA Update Webinar.

Attendees can access the next CNLA Office Hours webinar using the information below:

- **Webinar Date/Time:** Tuesday, April 21 at 1 p.m.
- **Webinar Link:** <https://ldoe.zoom.us/j/95836360641>
- **Phone Number:** 1 312 626 6799
- **Meeting ID:** 958 3636 0641
- **Passcode:** 592742

Upcoming Events and Deadlines

Please contact [earlychildhood@la.gov](mailto:earlychildhood@la.gov) with questions.



# Spring Collaboratives

In April 2026, the LDOE will host three opportunities for CNLAs and CCR&Rs to collaborate and improve outcomes for children in 2026-2027 academic year.

- Each agency should bring no more than four staff members.
- To determine attendees, please review the recommendations in the table below:

Event Information	CNLA	CCR&R
<b>Claiborne Building</b> 1201 North Third St. Baton Rouge, LA Thomas Jefferson Room 9:30 a.m. - 2:00 p.m.	<ul style="list-style-type: none"><li>● Community Network Lead</li><li>● Agency Administrator</li><li>● Education Manager</li><li>● Specific grant or program manager</li></ul>	<ul style="list-style-type: none"><li>● Director</li><li>● Master Coach(es)</li></ul>

*Please assign different staff to represent the CNLA and CCR&R if the entity represents both the CNLA and CCR&R.*



# Spring Collaboratives

Date	CCR&R Attendees	CNLA Attendees
<p>April 16, 2026</p> <p><b>Claiborne Building</b> 1201 North Third St. Baton Rouge, LA Thomas Jefferson Room 9:30 a.m. - 2:00 p.m.</p>	<ul style="list-style-type: none"><li>● Agenda for Children</li> <li>● Volunteers of America (VOA) 234</li></ul>	<ul style="list-style-type: none"><li>● Assumption, Lafourche, Orleans, Plaquemines, St. Bernard, St. Charles, St. James, St. John, St. Tammany, Terrebonne, Washington</li><li>● Central, East Baton Rouge, East Feliciana, Iberville, Livingston, St. Helena, Tangipahoa, West Baton Rouge, West Feliciana, Zachary</li></ul>



# Spring Collaboratives

Date	CCR&R Attendees	CNLA Attendees
<p>April 21, 2026</p> <p><b>Claiborne Building</b> 1201 North Third St. Baton Rouge, La Thomas Jefferson Room 9:30 a.m. - 2:00 p.m.</p>	<ul style="list-style-type: none"><li>● On Track by Five</li><li>● Jefferson</li><li>● Pointe Coupee Early Childhood Coalition</li><li>● Volunteers of America (VOA) 567</li></ul>	<ul style="list-style-type: none"><li>● Lafayette</li><li>● Jefferson</li><li>● Pointe Coupee</li> <li>● Acadia, Allen, Ascension, Avoyelles, Beauregard, Calcasieu, Cameron, Evangeline, Iberia, Jefferson Davis, St. Landry, St. Martin, St. Mary, Vermilion, Vernon</li></ul>



# Spring Collaboratives

Date	CCR&R Attendees	CNLA Attendees
<p>April 22, 2026</p> <p><b>Claiborne Building</b> 1201 North Third St. Baton Rouge, La Thomas Jefferson Room 9:30 a.m. - 2:00 p.m.</p>	<ul style="list-style-type: none"><li>• Children’s Coalition for Northeast Louisiana</li><li>• Northwestern State University (NSU)</li></ul>	<ul style="list-style-type: none"><li>• Caldwell, East Carroll, Franklin, Lincoln, Madison, Morehouse, Ouachita, Richland, Tensas, Union, West Carroll</li><li>• Bienville, Bossier, Caddo, Catahoula, Claiborne, Concordia, DeSoto, Grant, Jackson, LaSalle, Natchitoches, Rapides, Red River, Sabine, Webster, Winn</li></ul>



# Early Childhood eGMS Allocations

All 2026 allocations have been uploaded in the E-Grants Management System (eGMS). Funds must be drawn down by **June 30, 2026**. Any funds not drawn down by this date will not roll over.

## eGMS Application Names:

- EC State General Fund
- EC Consolidated
- EC Curriculum Reimbursement

## Important:

- To view the application in eGMS, “Contacts” and “Assurances for Early Childhood” must be completed.
- Please e-mail the LDOE Grants Helpdesk at [ldoegrantshelpdesk@la.gov](mailto:ldoegrantshelpdesk@la.gov) for assistance.



# Monthly Provider Update Webinar

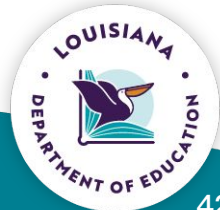
CNLAs are encouraged to attend the monthly webinars for early childhood providers. These webinars include important updates and reminders for all provider types.

Providers can access the next provider webinar using the information below:

- **Webinar Date/Time:** Thursday, May 7 at 1 p.m.
- **Webinar Link:** <https://ldoe.zoom.us/j/91532982014>
- **Phone Number:** 1 470 250 9358
- **Meeting ID:** 915 3298 2014
- **Passcode:** 519100

Upcoming Events and Deadlines

Please contact [earlychildhood@la.gov](mailto:earlychildhood@la.gov) with questions.



# Monthly CNLA Update Webinar

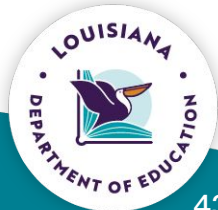
CNLAAs are encouraged to attend the monthly CNLA Update Webinar. These webinars include important updates and reminders for Community Network Lead Agencies.

Attendees can access the next CNLA Update Webinar using the information below:

- **Webinar Date/Time:** Tuesday, May 12 at 3 p.m.
- **Webinar Link:** <https://ldoe.zoom.us/j/97220084131>
- **Phone Number:** 1 312 626 6799
- **Meeting ID:** 972 2008 4131
- **Passcode:** 051391

Upcoming Events and Deadlines

Please contact [earlychildhood@la.gov](mailto:earlychildhood@la.gov) with questions.



# Monthly Office Hours for Active Coaching Sites

The LDOE team conducts webinars on various topics related to early childhood quality and improving child care sites' administrative and operational functions. Through engaging sessions and monthly guest speakers, the office hours are designed to support directors seeking training, to facilitate effective ECE leadership development.

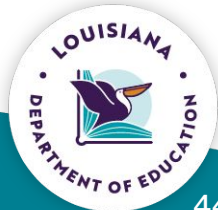
The April focus area is “Building Language and Communication Skills in Early Learning Sites.” During this session, participants will gain a deeper understanding of the supports that strengthen classroom quality.

Attendees can access the webinar using the information below:

- **Webinar Date/Time:** Wednesday, April 15 at 1:00 p.m.
- **Webinar Link:** <https://ldoe.zoom.us/j/98038985498>
- **Phone Number:** 1-470-250-9358
- **Meeting ID:** 980 3898 5498
- **Passcode:** 989833

Upcoming Events and Deadlines

Please contact [earlychildhood@la.gov](mailto:earlychildhood@la.gov) with questions.



# Monthly Office Hours for New Directors

CNLAs are asked to share this information with new directors: The LDOE team holds New Director webinars that focus on topics related to early childhood quality or operations while also helping to expand new directors' network of peers.

This month's topic is "Utilizing CLASS® Observation Tools". Participants will learn to use Ages and Stages Questionnaire (ASQ), TS GOLD®, and the CLASS® tool to conduct effective observations and document children's development. They will use this data to inform instruction, support child outcomes, and strengthen teacher-child interactions.

Attendees can access the webinar using the information below:

- **Date:** Friday, April 24 at 12 p.m.
- **Webinar Link:** <https://ldoe.zoom.us/j/98824530491>
- **Phone Number:** 1 470 250 9358
- **Meeting ID:** 988 2453 0491
- **Passcode:** 760909

Upcoming Events

Please contact [earlychildhood@la.gov](mailto:earlychildhood@la.gov) with questions.



# Monthly Young Children with Disabilities Community of Practice

The Early Childhood team conducts a monthly Community of Practice on various topics related to young children with disabilities. These webinars include professional development and updates regarding young children with disabilities in early childhood settings.

Attendees can access the webinar using the information below:

- **Webinar Date/Time:** Tuesday, April 28 at 3 p.m.
- **Webinar Link:** <https://ldoe.zoom.us/j/99301224453>
- **Phone Number:** 1-312-626-6799
- **Meeting ID:** 993 0122 4453
- **Passcode:** 497464

Upcoming Events and Deadlines

Please contact [Emily.Coussou@la.gov](mailto:Emily.Coussou@la.gov) with questions.



# Events and Deadlines



- April 15: [Active Coaching Site Office Hours](#)
- April 16, 21, 22: Spring Collaboratives
- April 21: [Optional CNLA Collaborative Office Hours](#)
- April 21: [PDG Family-Centered Summits Office Hours](#)
- April 23: [PDG Literacy Initiative Office Hours](#)
- April 24: [New Director Office Hours](#)
- April 28: [Young Children with Disabilities Community of Practice](#)
- May 7: [Monthly Provider Webinar](#)
- May 12: [CNLA Update Webinar](#)

Please contact [earlychildhood@la.gov](mailto:earlychildhood@la.gov) with questions.



# Questions



# Thank you!

The Early Childhood Strategy  
Leadership Team



**Brittney Cochran**  
Executive Director  
Early Childhood Strategy  
[brittney.cochran@la.gov](mailto:brittney.cochran@la.gov)

**Shallan Jones**  
Director of Early  
Childhood Access and  
Workforce Strategy  
[shallan.jones@la.gov](mailto:shallan.jones@la.gov)

**Brandi Crowell**  
Director of  
Community-Level Strategy  
[brandi.crowell@la.gov](mailto:brandi.crowell@la.gov)

**Caitlyn Robinson**  
Director of Academics  
[caitlyn.robinson@la.gov](mailto:caitlyn.robinson@la.gov)

