

Welcome!

Go ahead and mute your microphone and turn off your camera to save bandwidth.

if you are presenting for your school system during the school system share-out, you can turn your camera and mic on then.

Ice-Breaker:

What would you like to get in a gift basket?
(cars and houses don't fit in baskets)





EL Supervisors *Community of Practice*
Leadership Series:
Engaging Families Effectively

April 2021

Alice Garcia

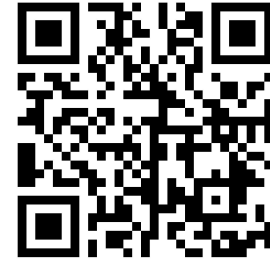
EL Program Coordinator

Norms

- Be present
- High engagement
- Balance participation
- [Parking lot](#)



Checking-in



We're almost through the school year. Let's [check-in.](#)

1. How are things going with your ELs?
2. Have you had a big increase/decrease in enrolling ELs? Is so, what grades?
3. How did ELPT administration go? What would've made it better?
4. Have you begun screening raising kindergarten students?
5. What resources do you need from LDOE to help you better serve ELs?

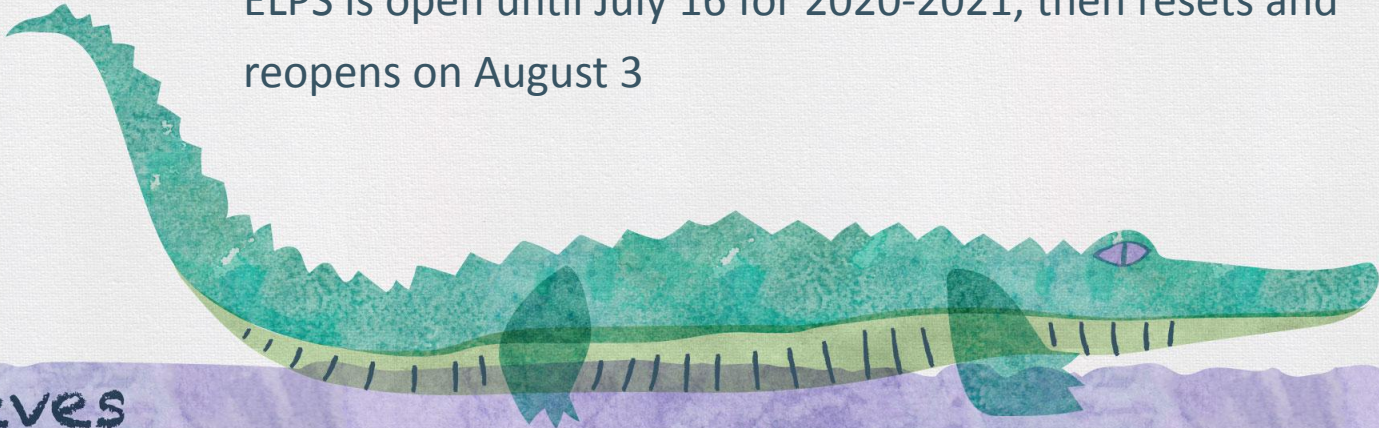
ELPS Changes

Starting with administration for 2021-2022 Future Kindergarten scoring will include-

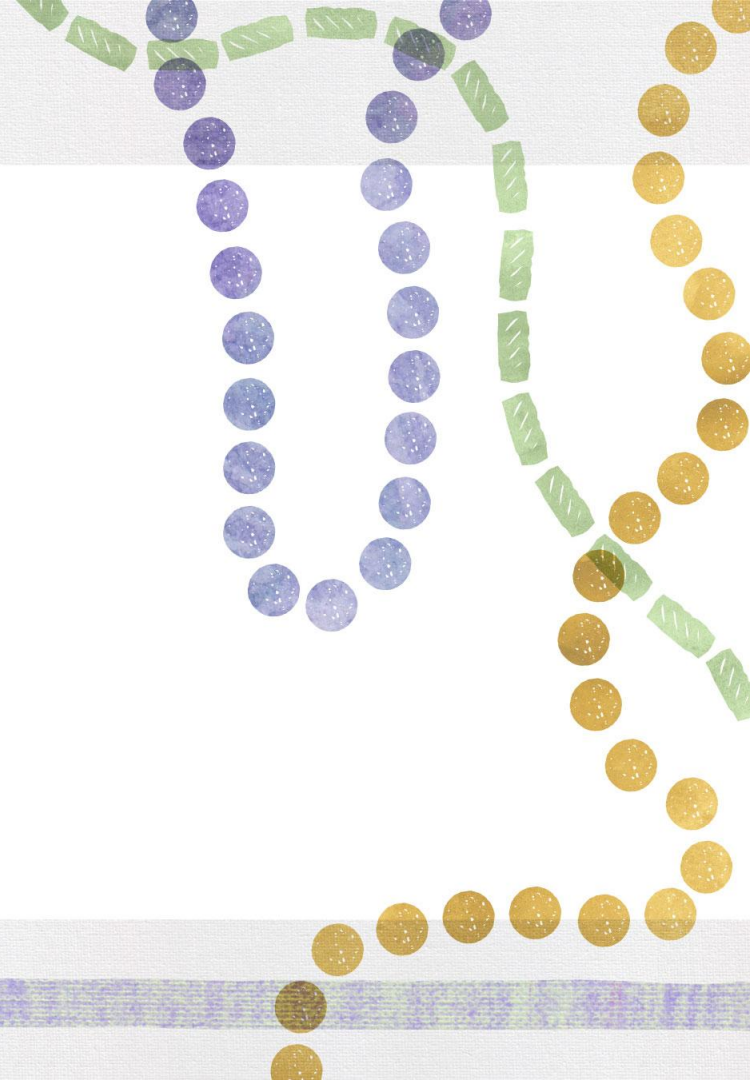
Level 3 in all 4 domains = Proficient

See the [Future Kindergarten ELPS Proficiency Definition Change](#) for more information.

ELPS is open until July 16 for 2020-2021, then resets and reopens on August 3



Family Engagement



Strategies for Engaging ELL Families-Article

Homework Check: I asked you to read through the [Strategies for Engaging ELL Families](#) before this meeting.

1. What new information did you gain from this article?
2. How might you use some of this information to improve the EL Family Outreach Programs in your school system?

There is a more extensive guide linked in this article called [Engaging ELL Families: Twenty Strategies for School Leaders](#).

School System Share-Out

How are your school system's engaging EL families?

Cohort 2	Cohort 1	Cohort 3
Caddo: Marilyn Bartlett Jackson MGBARTLETT@caddoschools.org	EBR: Maricel Salvacion msalvacion@ebrschools.org	

Let's hear about some other ideas of how to engage families.

What is Family Engagement

While there are a lot of definitions out there for family engagement, let's come up with our own by first looking at some examples.

As we hear the examples, consider the following:

1. From these, what can you determine is parent engagement?
2. How are these examples showing that parents are engaged?
3. What results would you expect to see after these activities?



Shift From Involvement to Engagement

Family Involvement:

Starts with the school

The school comes up with the ideas

What needs to happen to make this shift?

Family Engagement:

Starts with the parents

Parents generate ideas and activities



ESSA Requirements for Parent Engagement



Schools must:

- communicate with parents;
- inform parents of EL status and program type;
- give parents access to teacher's credentials (if requested);
- give parents access to school report card; and
- conduct outreach to parents of ELs.

How your school system is doing this?

Why is Family Engagement Important?

3 reasons why family engagement is important especially for our ELs.

Possibly one of the biggest factors in school success and student achievement

It provides meaningful collaboration between schools, families, and the community.

Partnerships that reflect an understanding of the great diversity among families and differences in cultural and socioeconomic conditions.

Louisiana Guiding Beliefs-Review

Louisiana's students—all of them, no matter race, disability, or creed—are as smart and capable as any in America. They have gifts and talents no lesser than those given to any children on this earth.

Louisiana has worked hard to raise expectations for students, and as a result, students are performing at higher levels than ever before.

While Louisiana has made great strides in increasing life opportunities for its students, there remain serious challenges in Louisiana's schools. Often these challenges are experienced to the greatest extent by children of historically disadvantaged backgrounds.

As educators, we have a powerful role to play in helping all students overcome the challenges they will experience on the way to leading healthy and productive lives as adults.

Connecting Guiding Beliefs to Family Engagement

Refer to the document linked in the chat:

<https://docs.google.com/spreadsheets/d/1iDq9bZ5cp1GnAKmwzRjCcQpyA5swMuJKQG5SlwLuO2o/edit?usp=sharing>

I've listed the beliefs as discussed in the previous slide. Connect that belief to any aspect of family engagement in the column on the right.

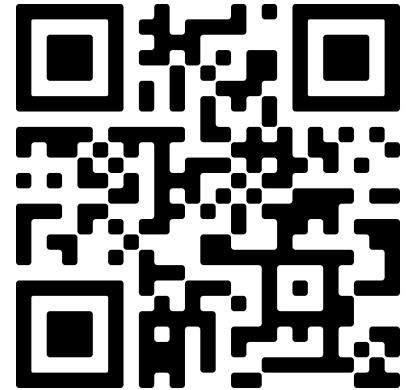
We will discuss your findings.

Welcoming EL Families Survey

Poll Time! [Creating a Welcoming Environment for EL Families](#)

Let's discuss your responses in small groups

- Highlight anything where you've been able to check "yes".
- Discuss how your school system might be able to switch over some of those "no" responses to "yes".

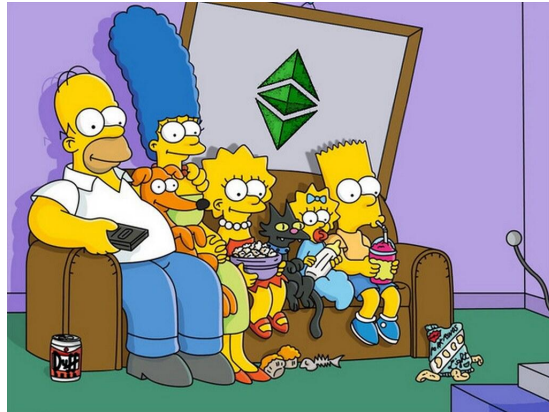


Possible Barriers and Solutions

Possible Barrier	Possible Solutions
Language	Parent liaisons, bilingual staff, translated materials, home language phone tree/volunteers
Transportation	Rides to school events, ride sharing resource, information about public transportation, meeting with families in their community
Time	Flexibility in scheduling conferences and events, parent survey
Childcare	Provide childcare for conferences and school events
Understanding Roles	EL meetings to provide information about school system and education, school tours, community volunteers who speak home language
Fear	Demonstrated support for EL families, adult education programs, family support groups

Family

Look at the families pictured below. Think about the obstacles you might encounter with each and what strategies you could use to overcome them.



Translating

In most cases, you want an adult who is a “certified” translator. This is especially important for things like IEPs/504 meetings, disciplinary meetings, parent/teacher conferences etc. .

If they’re not available, look to have school staff on hand who can translate (teachers are often busy teaching). Bilingual office workers, secretaries, attendance clerks, librarians/media specialists are great for these purposes.

Use an on-demand translation service-suggestions?

It is actually against the law and a violation of civil rights to use students to translate especially in confidential matters. It’s okay if they answer the phone, but the remainder of the conversation should be handled by one of the individuals above.

Finding Translators

Certify School Staff

Loyola University offers a certification course

Contact: Michelle Reinhardt msreinha@loyno.edu

Online Services:

[Language Line](#)

[Stepes](#)

[Certified Languages](#)

What other options have you used successfully?

EL Family Engagement Plan

Create a plan using the EL Family Engagement Plan that includes:

Action Steps	Timeline	Person Responsible	Resources Needed	Notes

- **Start small**-while most things are “Go Big or Go Home” this isn’t the best approach for engaging EL families.
- Start with a **parent survey** to see what the needs are. You may want to give them a list of a few things with the hopes that they will then come up with their own for the next time.
- Show them that you **value their input** and that **you want their involvement**.

Additional Ideas

Examples of things to include in your plan:

- Translate-student handbook, school website, dress code, registration paperwork, newsletters
- Find an EL Parent Liaison
- Host EL Parent Registration Day/Parent Day
- Survey Families for language needs
- Host a Spanish-Speaking Parent Night
- Host a Spanish Literacy Night

What are some others?

Tools for Helping Families

[LDOE Family Support Toolbox](#)-link to all things the LDOE has developed to support families.

[LDOE Family Support Toolbox Library](#)-link to all parent guides and other documents to support families

[Parent Assessment Portal Spanish](#)-interactive portal to introduce assessments to parents. Also available in Spanish.

[School System Family Engagement Policy Checklist](#)-link to checklist used in Texas

[EL Toolkit](#)-USED created resource that provides guidance for servicing ELs at all levels

[English Learner Library](#)-LDOE's website for all things ELs

[LDOE Parent Guides](#)-library of parent guides for ELs, ELPT and more (most available in multiple languages)

[TESOL Community and Family Toolkit](#)-a thorough guide with strategies of how to engage families and the community

[USED Family Toolkit](#)-an upcoming resource for helping EL families (work in progress)

EL LDOE Updates

- **Lau Plans**-formalized EL plan for how your school system is supporting ELs. LDOE will begin collecting these 2021-2022
- **Summer Programming for ELs**-Schools are encouraged to begin addressing learning (language) loss through [summer programs](#).
- **Supporting Newcomer and Beginner ELs Curriculum Guidance**-coming May 2021!
- **Assessment Committees**-LDOE is always looking for EL educators to be part of our [assessment review committees](#)

Upcoming-EL PD Vendor Guide-send me recommendations

SLA/TWI Curriculum Reviews



Wrap-Up & Next Steps

Next Series: September 2021

Revise Cohorts

Brainstorm Series Focus-You'll hear from me this summer!

Topics: *Using Lau Plans, Supporting K-2 ELs, EL Support in High, Middle, and Low incident School Systems, Using L1 to Support L2 Acquisition.*

Teacher Leader Summit-May 2021

In-person and virtual sessions

No EL specific track, but look for our sessions under Diverse Learners.



Questions?

Post your questions for our final FAQ of the school year in the [Padlet](#) or email them to me by Friday, April 16.

Questions, comments, changes for next year: alice.garcia@la.gov

Know folks who are looking for classes to complete their ESL/EL certification?

ULL is offering an ESL Bootcamp for teachers that will have a cohort taking all required ESL certification classes. For more information, fill out this [form](#).