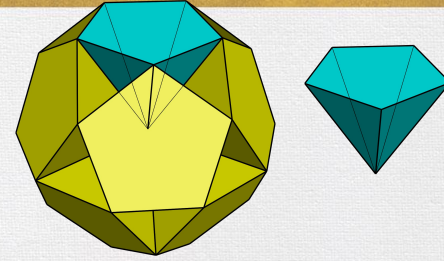




**EL Supervisor Community of
Practice 2022
Cohorts 1-3
September 2022**

Ice Breaker



Hidden Gems

Recommend an underrated TV show, movie, or documentary that you believe everyone should see at least once in their lives.



Agenda

- Objective
- Checking-in: Back to School
- Lau Plans
 - What We Learned
 - Overview
 - Eval Tool
 - Programming
 - Instruction
 - Bilingual Supports
- Lau Plans 2022-2023
- EL Demographic Trends
- Reminders
- Recommendations
- Wrap-Up
-

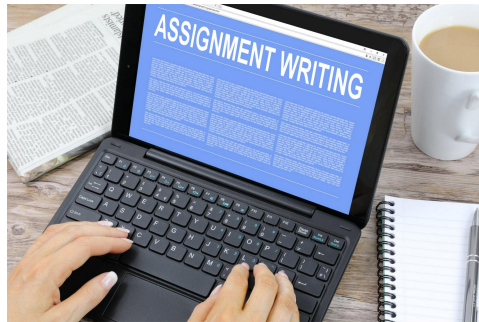
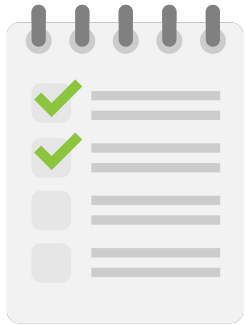
Objective

To establish a community where we learn from each other.

We all want our ELs to grow and achieve, so let's use our combined experience, expertise, and resources (when possible) to build a community where we are sharing how we are getting them to the finish line and beyond.

Checking-in

Here we are almost 2 months into the school year. How are things going?



Back to School

1. Did Home Language Survey go out (digitally or physically) to all newly enrolling students?
2. Did you send out notification letters to new and returning EL families?
3. How are EL/LEP families being included in things like “Meet the Teacher” and “Back to School” nights?
4. What is something new you are seeing with ELs/EL families this year?

Lau Plans

- Named for the Lau v Nichols Supreme Court Case
- Is a federal requirement

Must include:

EL Identification

EL Programming

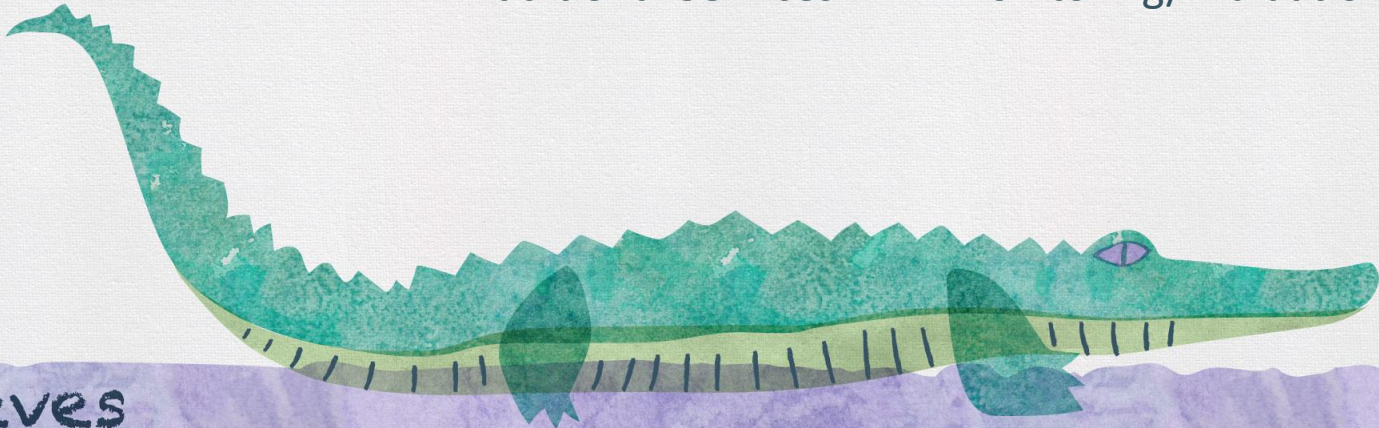
EL Supports

Assessments

PD

Additional Services

Monitoring/Evaluation



What We Learned

- Many of our school systems are trying to do what's best/needed for their ELs
 - We are desperate for instructional support (Direct and Indirect ELD)
 - We need more qualified/trained staff and access to appropriate resources
 - We need effective examples of bilingual supports
-
- **Ineffective=44, Compliance=41, Beyond Compliance=13, Exemplary=2**

Lau Plan Overview



Evaluation Tool

To help you meet the requirements of evaluating the effectiveness of your EL Programs for the coming years, LDOE created the [School System EL Programming Self Evaluation Tool](#).



School System EL Programming Self-Evaluation Tool

[Overview](#)

[Purpose](#)

[Directions](#)

[Part I: Programming](#)

[Part II: Resources](#)

[Part III: Academic Results](#)

[Part IV: Action Plan](#)

[Appendix A: EL Program Descriptions](#)

[Appendix B: Content Based English Instruction](#)

[Appendix C: Newcomer Program](#)

[Appendix D: English as Second Language \(ESL\)](#)

Programming

At the most basic level, every school system must provide supports to ELs in their content classrooms through some form of a **content based English instruction** program.

An effective content-based English instruction program requires:

- collaboration between the content teacher/EL specialist
- use of strategies and accommodations that make the content accessible for all ELs
- awareness of language acquisition
- strong differentiation skills
- willingness to consider linguistic and cultural backgrounds

Anyone have good examples of this in their school systems?

Instruction

Instructing ELs can seem very daunting at first, but it can quickly become intuitive.

- Focus on assets (What the ELs bring)
- Use concrete methods and tools like those listed on the:
 - [EL Accommodation Checklist](#)
 - [EL Classroom Differentiation Plan](#)
 - [Louisiana's Glossary of EL Strategies](#)

Good EL instruction does require a change of mindsets for both the **EL Specialist** and the **Content Teacher**. How are you doing this?

Bilingual Supports

Effective bilingual supports are used to help ELs access the curriculum.

| They are- | They are not- |
|---|--|
| <ul style="list-style-type: none">● using the home language to re-teach, explain, and/or connect learning● best for newcomers, Emerging, P1 students● instructional● temporary | <ul style="list-style-type: none">● direct translations of materials● direct translations of teacher's words● the only way to teach an EL● needed for ELs at all levels● permanent |

Why can't we just translate everything for the students?

Translations/Translated Materials

Remember that Spanish manual I gave you?

AVB-D 16

16x16 AVB-to-Dante Bridge

Manual del usuario



Configuración de la red AVB

La conexión y el ajuste de la red AVB se realiza mediante una mesa de mezclas de la serie III de StudioLive o UC Surface funcionando en un ordenador Mac o Windows. Esto puede hacerse desde la pantalla táctil del mezclador o desde UC Surface.

Quando se utiliza el AVB-D 16 solo con cajas de escenario de la serie NSB o el EarMix 16M, se debe utilizar un controlador AVDECC de terceros para dirigir el audio hacia y desde el dispositivo. En este momento, UC Surface requiere la conexión de un mezclador de la serie III de StudioLive para soportar el enrutamiento de la red AVB.

IMPORTANTE: El AVB-D 16 deriva su reloj de medios AVB del flujo de audio entrante 1. Para que el AVB-D 16 funcione correctamente, debe tener un flujo AVB del mezclador maestro de la serie III de StudioLive conectado al flujo de audio 1 del AVB-D 16. Si no lo hace, se producirán chasquidos y clics de audio.

When does translating materials/lessons help students?

Lau Plans 2022-2023

[Lau Plan 2022-2023 Guidance](#) is Available on the [FSGR Library](#).

- Office hours on filling out the Lau Plan will be held on [Thursday, October 13. 1:00-2:00](#)
- Lau Plans are due, Monday, October 31 by 4:30

While there is no penalty for not submitting a Lau Plan at this time, this could change in the coming years.

Support Category Discussion

The initial idea behind the support categories for Lau Plans was to offer specific types of technical assistance to school systems to meet the needs identified on the Lau Plans.

1. What changes did your school system make based on Lau Plans 2021-2022?
2. Did you learn anything from doing the Lau Plan last year?
3. How could we better support you with the Lau Plan?
4. What more should be on the Lau Plan Feedback form?

Next Steps with Lau Plans

Use your Lau Plans to

- identify gaps, needs, or areas of excellence.
- facilitate discussions with stakeholders
- reach out and have discussions with other school systems
- add an extra level of accountability
- improve EL programming and supports

Break



EL Demographic Trends

I sent you the [OELA Fact Sheet: English Learner Demographic Trends](#) and then asked you to have enough knowledge about your school system's demographics based on:

- Number of ELs
- Grade Levels of ELs
- Proficiency Levels of ELs
- ELs demonstrating growth
- [SIFEs](#)

1. What trends do we see from this data?
2. How can we plan/prepare for the coming year?



Statewide EL Demographic Trends

| Year | 2021 | 2022 |
|--------------------|--|--|
| Number of ELs | 26,480 | 30,650 |
| Grade Levels | K-12%, 1-12.7%, 2-11%, 3-9% 4-8%, 5-7%, 6-6%, 7-6%, 8-6% T9-1%, 9-4.7%, 10-6.5%, 11-4%, 12-2% | K-12.7%, 1-12.6%, 2-11%, 3-9% 4-8%, 5-6%, 6-6%, 7-6%, 8-5% T9-1.6%, 9-6%, 10-4%, 11-4%, 12-2.9% |
| Proficiency Levels | E=24%, P=68%, Pf=8% | E=29%, P=62%, Pf=10% |
| SIFEs | Data not accurate | Data not accurate |

What Else?

1. As we are looking at these trends, what else should we consider?
2. How can this help us with meeting the needs of our ELs?
3. What trends should we continue to monitor?

Coming Soon:

- EL Program Planning Template
- EL Tutoring Program
- Additions to the EL PD Vendor Guide and Curriculum Guidance*

Reminders

October 1 counts will be happening soon-

- Make sure that all EL rosters/lists are current.
 - Remove the EL/LEP code from any student who scored proficient on ELPT 2022.
- There are no more early exits for students with disabilities. ELPT Connect will be available this spring.
- Be sure to see if your school system has added a [SIFE](#) indicator in your SIS.
- [Title III](#) preliminary allocations have been loaded-begin budgeting now!

Recommendations

Newsletters

[NCELA Nexus](#) [Immigrant Connections](#) [MPI](#)

Webinars

[edWeb](#) [Lexia Learning](#)

Conferences

[LATESOL](#) [NABE](#) [NAELPA](#) [LaCosecha](#) [NAESPA](#) [TESOL](#) [LASAFAP](#)

What other organizations should be on this list?

Wrap-Up

Thank you for your time and all that you do to support ELs in Louisiana!

Next Steps:

- Title III CSPR Coming Soon!
- Send me any questions for FAQ by October 7
- Complete and submit your Lau Plan
- EL COP 2-November 16-17

Questions: alice.garcia@la.gov

