

2024 Jump Start Convention and CWA Summit Session Schedule

Cajundome and Convention Center

January 23, 2024

[9:45 a.m. - 10:30 a.m. Rotation 1](#)

[10:40 a.m. - 11:25 a.m. Rotation 2](#)

[11:35 a.m. - 12:20 p.m. Rotation 3](#)

Rotation 1		
Room	Session	Presenter(s)
Blues	<p>Off-Campus Registered Apprenticeships: Development and Implementation</p> <p>High school apprenticeship programs combine work-based, on-the-job learning with relevant technical education in the classroom. Students who participate in apprenticeship programs graduate with a high school diploma and industry credentials.</p>	<p>Kelly DiMarco <i>Director of Workforce Development, Jefferson Parish Schools</i></p> <p>Ellis Borque <i>New Orleans Plumbers and Steamfitters, Local 60</i></p>
Cajun	<p>Building a Network of Engagement for College and Career Readiness</p> <p>This session will discuss how one district created a network of engagement between students, parents, community members, economic development agencies, local business/industry, and post-secondary education to positively impact students' college and career readiness.</p>	<p>Melissa Strata-Burger <i>Supervisor of Curriculum and Instruction, St. Tammany Parish School Board</i></p> <p>Stacy Alexius <i>Career and Technical Education Coordinator, St. Tammany Parish School Board</i></p> <p>April Jarell <i>Principal, Lakeshore High Schools</i></p>



Rotation 1

Room	Session	Presenter(s)
Gospel	<p style="text-align: center;">LWC Registered Apprenticeships (the Second Year)</p> <p>This session will highlight the LWC Registered Apprenticeship program in Lafourche Parish as the district enters its second cohort. The lessons learned, difficulties and successes will be discussed.</p>	<p style="text-align: center;">Bonnie Lefort <i>CTE Coordinator, Lafourche Parish School District</i></p> <p style="text-align: center;">Jarad Walker <i>CMC Principal, Lafourche Parish School District</i></p>
Zydeco	<p style="text-align: center;">CDF Process</p> <p>In this session, the LDOE will provide participants with outcomes of a study on the CDF list that focused on student outcomes and share a draft of the new and regionally focused processes when updating the CDF list.</p>	<p>Jessica Vallelungo <i>Education Deputy Advisor, LDOE</i></p>
Acadia	<p style="text-align: center;">Preparing High School Students for College, Career, and Life: Soft Skills and Internships</p> <p>Preparing young people for college, career, and the future they choose requires a lot more than coursework and credentials. Since 2015, YouthForce NOLA has connected and energized a network of education, community, and business partners to strengthen and reimagine high school for New Orleans public school students. YouthForce NOLA equips New Orleans public school students with the skills and know-how they need—including through industry credentials, college credits, on-the-job experience, and the development of invaluable soft skills—to take charge of their futures and successfully navigate their next steps in life. In this session, attendees will learn how to explicitly cultivate soft skills that employers need to see in every job candidate in any classroom or training space. Additionally, attendees will learn about best practices and lessons learned from YouthForce</p>	<p style="text-align: center;">Nathan Stockman <i>Chief of Education and Training Partnerships, YouthForce NOLA</i></p> <p style="text-align: center;">Paige Boetefuer <i>Director of the Solutions Lab, YouthForce NOLA</i></p> <p style="text-align: center;">Rahmel Fuller <i>Program Manager - Learning Design, YouthForce NOLA</i></p>



Rotation 1		
Room	Session	Presenter(s)
	NOLA's flagship Internship program. Participants will walk away with insights, tools, and resources to help integrate soft skills and internships/work-based learning into the student experience.	
Vermillion	<p>Louisiana National Guard Job Challenge Program</p> <p>LA National Guard Education programs offer academics and trade certifications to at risk, helping to produce productive citizens.</p>	<p>Shawn Parker <i>Admission Lead, LANG Education Programs</i></p>
Iberia	<p>EveryDay Labs Attendance System Collaboration (Closed to the Public)</p> <p>Join the EveryDay Labs team for a morning of cross collaboration with all 6 districts participating in our partnership this year. We'll spend time together building a foundation for supporting attendance systems through an MTSS approach and analyzing a self-assessment so that you can create an action plan with concrete next steps for improvement. We'll then spend time digging into your attendance dashboard and specifically look at Tier II students. You'll walk away with 3-5 intervention groups created so that your team is ready to support students with emerging attendance patterns.</p>	<p>Greg Falla Mikia Manley Brad Redmond Estefanie Rodriguez <i>Everyday Labs</i></p>
St. Landry	<p>Table Talk: Streamlining Policies, Systems, & Implementation</p> <p>This session will help district and school-level leaders and CWAs improve and streamline their role within attendance work. Through a design-thinking problem-solving approach, participants will gain understanding on how to review their district policies, guidelines, and systems to inform future practices. Participants will also have an opportunity to collaborate with each other in this attendance learning</p>	<p>Bich Do Sarah Harrell <i>LSU Attendance Alliance</i></p>



Rotation 1		
Room	Session	Presenter(s)
	community.	
St. Martin	<p>U.S. Army Unique Opportunities</p> <p>Our goal is to provide unique insight to educational and career opportunities that come with service in the Army. Key leaders and educators will be prepared to inform their students and families about their options after attending this session.</p>	<p>Kevin Finerty Calethia Thompson Shane McCarthy</p> <p><i>U.S. Army</i></p>
St. Mary	<p>What's Working in the Field to Improve Attendance</p> <p>Join Everyday Labs and Jefferson Parish School District to learn how district and school leaders can implement creative approaches to help schools build a culture of attendance. Jefferson Parish will highlight strategies being implemented in their district to meet the diverse needs of their community.</p>	<p>Cynthia Welling Emily Orngard</p> <p><i>Everyday Labs</i></p>

Rotation 2		
Room	Session	Presenter(s)
Blues	<p>Louisiana Dual Enrollment</p> <p>This presentation will provide an overview of Louisiana Dual Enrollment initiatives. From the revised Board of Regents dual enrollment policy to updates related to LaDualEnrollment.com. Join this interactive session to learn more about updates related to Louisiana Dual Enrollment.</p>	<p>Allison Vicknair <i>Associate Commissioner for Academic Affairs and Innovation, Board of Regents</i></p> <p>Dr. Lupe Lamadrid <i>Senior Policy Advisor, Board of Regents</i></p>



Rotation 2

Room	Session	Presenter(s)
------	---------	--------------

Cajun	<p>STEM Renaissance</p> <p>The Louisiana STEM Pathways are transitioning to a new structural format to better meet student career needs. CS and STEM specialists will present the NEW STEM Pathway, the new structure for students to earn diploma seals, and answer questions about these changes. The STEM Renaissance will start with students entering high school in the 2024-2025 school year. This will be an opportunity to see the new briefs as well.</p>	<p>Dr. John Underwood <i>Computer Science and STEM Specialist, LDOE</i></p> <p>Jamie Mixon <i>Computer Science and STEM Supervisor, LDOE</i></p>
-------	--	--

Gospel	<p>CTE Course Progression Mapping</p> <p>Moving beyond the moment of an elective and replacing it with sequenced programs of study that align with postsecondary placement. Course progressions provide students with opportunities to acquire a portfolio of training, experiences, and certifications required in today’s workplace. CTE is no longer just about teaching students a narrow set of skills sufficient for entry-level jobs; it is about preparing students for a career journey of multiple entrance and exit points.</p>	<p>Kelly DiMarco <i>Director of Workforce Development, Jefferson Parish Schools</i></p> <p>Joshua Meche <i>CTE Coordinator, Jefferson Parish Schools</i></p>
--------	---	--



Rotation 2		
Room	Session	Presenter(s)
Jazz	<p style="text-align: center;">Partnerships for the 21st Century</p> <p>Communication is the foundation of relationships. How teams communicate with learners and the community as well as internally affects all aspects of a program. Developing and building purposeful communication networks are essential to ensuring that learners are connecting with opportunities to build an economically sustainable future. Collaborating with stakeholders, including the learners, is central to building communications that resonate. or Recent headlines share the challenges facing learners and families. While in the past, technological advances were ponderous and integration of those advances into the workforce and education took decades, today that integration is accelerating. Building partnerships and collaborating with stakeholders, especially Business and Industry, is essential to ensuring that learners are ready for the next technical shift. Thriving partnerships are mutually beneficial and an integral part of building a sustainable economy.</p>	<p>Martha Moore, LCTCS</p> <p>Dr. Brittney Baptiste Williams, LCTCS</p>
Zydeco	<p style="text-align: center;">Jump Start Summers Application</p> <p>This session will walk participants through the new process to submit a Jump Start Summer Application.</p>	<p>Jessica Vallelungo <i>Education Deputy Advisor, LDOE</i></p>



Rotation 2		
Room	Session	Presenter(s)
Acadia	<p>Using WorkKeys to Grow Communities</p> <p>Students and Educators have a crucial role in the local workforce that can lead to increased economic outcomes for the communities they serve. Discover how schools improve compliance and performance with industry-driven cognitive skill certifications, such as WorkKeys. Gain a deeper understanding of local and regional partnerships that fully integrate education resources and strategies as a win-win with Work Ready Communities. When schools align with employers and economic development, they help provide poverty-ending career pathways in their parish, region and state.</p>	<p>Mia Edwards <i>Account Executive, ACT</i></p> <p>Chriss Cazayouk <i>Director of Workforce Solutions, ACT</i></p>
Vermillion	<p>The Next Generation of Teachers are Sitting in Your Schools Right Now</p> <p>In this session participants will learn more about recruiting teachers, starting in middle school by implementing the Pre-Educator Pathway.</p>	<p>Laurie Carlton <i>Educator Development, LDOE</i></p>
Iberia	<p>EveryDay Labs Attendance System Collaboration (Closed to the Public)</p> <p>Join the Everyday Labs team for a morning of cross collaboration with all 6 districts participating in our partnership this year. We'll spend time together building a foundation for supporting attendance systems through an MTSS approach and analyzing a self-assessment so that you can create an action plan with concrete next steps for improvement. We'll then spend time digging into your attendance dashboard and specifically look at Tier II students. You'll walk away with 3-5 intervention groups created so that your team is ready to support students with emerging attendance patterns.</p>	<p>Greg Falla Mikia Manley Brad Redmond Estefanie Rodriguez</p> <p><i>Everyday Labs</i></p>



Rotation 2		
Room	Session	Presenter(s)
St. Landry	<p style="text-align: center;">Table Talk: Streamlining Policies, Systems, and Implementation</p> <p>This session will help district and school-level leaders and CWAs improve and streamline their role within attendance work. Through a design-thinking problem-solving approach, participants will gain understanding on how to review their district policies, guidelines, and systems to inform future practices. Participants will also have an opportunity to collaborate with each other in this attendance learning community.</p>	<p>Bich Do Sarah Harrell</p> <p><i>LSU Attendance Alliance</i></p>
St. Martin	<p style="text-align: center;">Identifying Attendance Barriers and Addressing Them Through School-Level Student Support Systems</p> <p>In this session, participants will learn how to identify and respond to student and family needs that contribute to chronic absenteeism. After discussing problem identification, participants will receive guiding principles, templates, and other tools to integrate attendance intervention into existing teaming frameworks focused on addressing the needs of the individual students (SAT, SBLC, etc.). Participants will participate in action-planning to grow their existing student support systems concentrating on developing, implementing, and tracking Tier 2 supports.</p>	<p>Dr. Gwendolyn Murray</p> <p><i>LSU Attendance Alliance</i></p>
St. Mary	<p style="text-align: center;">What's Working in the Field to Improve Attendance</p> <p>Join Everyday Labs and Jefferson Parish School District to learn how district and school leaders can implement creative approaches to help schools build a culture of attendance. Jefferson Parish will highlight strategies being implemented in their district to meet the diverse needs of their community.</p>	<p>Cynthia Welling Emily Orngard</p> <p><i>Everyday Labs</i></p>



Rotation 3		
Room	Session	Presenter(s)
Blues	<p>Implementing Jump Start for the Future</p> <p>This session will provide attendees with an introductory overview of Jump Start.</p>	<p>Jessica Vallelungo <i>Education Deputy Advisor, LDOE</i></p>
Cajun	<p>Implementing the Firefighter Credential</p> <p>Nationwide, there is a shortage of people with the desire to become a firefighter. We must look at the youth today and actively recruit them to consider a career in Fire/EMS. Our program Mission Statement is Education and Training to prepare the next generation of firefighters. We will discuss the process to be an approved fire program, how to recruit and retain youth in the field, and answer any question the audience may have.</p>	<p>Dr. Billy Neill <i>Bossier Parish Schools</i></p> <p>Gray Young <i>Firefighter Instructor, Bossier Parish Schools</i></p>
Gospel	<p>Operation Spark Apprenticeship</p> <p>This session will discuss how the Operation Spark coding apprenticeship was designed to fit school districts across the state through different modalities and teacher training. The session will also cover the many opportunities available to students with credentials in coding.</p>	<p>Aleen LeBoeuf <i>CTE Coordinator, St. Bernard Parish Schools</i></p> <p>Mayukh Raychaudhuri <i>Director of High School Programs, St. Bernard Parish Schools</i></p> <p>Kelly DiMarco <i>Director of Workforce Development, Jefferson Parish Schools</i></p>



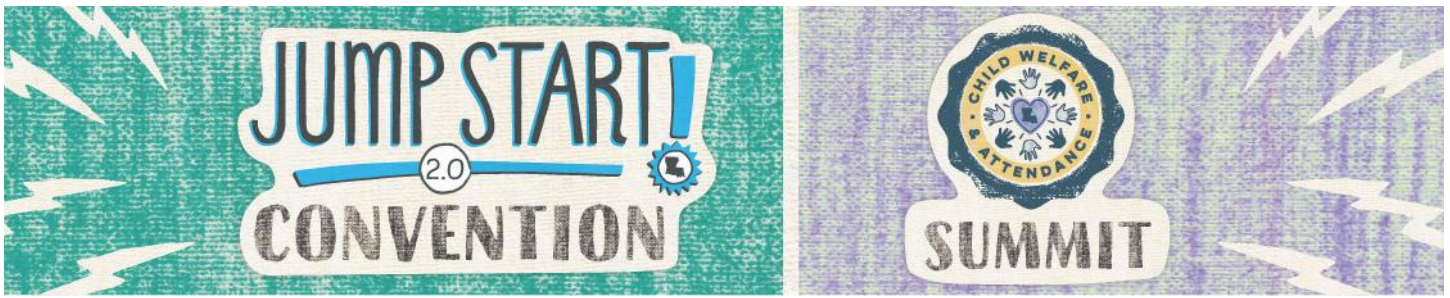
<p>Jazz</p>	<p>Preparing High School Students for College, Career, and Life: Soft Skills and Internships</p> <p>Preparing young people for college, career, and the future they choose requires a lot more than coursework and credentials. Since 2015, YouthForce NOLA has connected and energized a network of education, community, and business partners to strengthen and reimagine high school for New Orleans public school students. YouthForce NOLA equips New Orleans public school students with the skills and know-how they need—including through industry credentials, college credits, on-the-job experience, and the development of invaluable soft skills—to take charge of their futures and successfully navigate their next steps in life. In this session, attendees will learn how to explicitly cultivate soft skills that employers need to see in every job candidate in any classroom or training space. Additionally, attendees will learn about best practices and lessons learned from YouthForce NOLA’s flagship Internship program. Participants will walk away with insights, tools, and resources to help integrate soft skills and internships/work-based learning into the student experience.</p>	<p>Nathan Stockman <i>Chief of Education and Training Partnerships, YouthForce NOLA</i></p> <p>Paige Boetefuer <i>Director of the Solutions Lab, YouthForce NOLA</i></p> <p>Rahmel Fuller <i>Program Manager - Learning Design, YouthForce NOLA</i></p>
<p>Zydeco</p>	<p>Louisiana National Guard Job Challenge Program</p> <p>LA National Guard Education programs offer academics and trade certifications to at risk, helping to produce productive citizens.</p>	<p>Shawn Parker <i>Admission Lead, LANG Education Programs</i></p>



<p>Acadia</p>	<p style="text-align: center;">Using WorkKeys to Grow Communities</p> <p>Students and Educators have a crucial role in the local workforce that can lead to increased economic outcomes for the communities they serve. Discover how schools improve compliance and performance with industry-driven cognitive skill certifications, such as WorkKeys. Gain a deeper understanding of local and regional partnerships that fully integrate education resources and strategies as a win-win with Work Ready Communities. When schools align with employers and economic development, they help provide poverty-ending career pathways in their parish, region and state.</p>	<p style="text-align: center;">Mia Edwards <i>Account Executive, ACT</i></p> <p style="text-align: center;">Chriss Cazayoux <i>Director of Workforce Solutions, ACT</i></p>
<p>Vermillion</p>	<p style="text-align: center;">STEM Renaissance</p> <p>The Louisiana STEM Pathways are transitioning to a new structural format to better meet student career needs. CS and STEM specialists will present the NEW STEM Pathway, the new structure for students to earn diploma seals, and answer questions about these changes. The STEM Renaissance will start with students entering high school in the 2024-2025 school year. This will be an opportunity to see the new briefs as well.</p>	<p style="text-align: center;">Dr. John Underwood <i>Computer Science and STEM Specialist, LDOE</i></p> <p style="text-align: center;">Jamie Mixon <i>Computer Science and STEM Supervisor, LDOE</i></p>



<p>Iberia</p>	<p>EveryDay Labs Attendance System Collaboration (Closed to the Public)</p> <p>Join the Everyday Labs team for a morning of cross collaboration with all 6 districts participating in our partnership this year. We'll spend time together building a foundation for supporting attendance systems through an MTSS approach and analyzing a self-assessment so that you can create an action plan with concrete next steps for improvement. We'll then spend time digging into your attendance dashboard and specifically look at Tier II students. You'll walk away with 3-5 intervention groups created so that your team is ready to support students with emerging attendance patterns.</p>	<p>Greg Falla Mikia Manley Brad Redmond Estefanie Rodriguez</p> <p><i>Everyday Labs</i></p>
<p>St. Landry</p>	<p>Identifying Attendance Barriers & Addressing Them Through School-level Student Support Systems</p> <p>In this session, participants will learn how to identify and respond to student and family needs that contribute to chronic absenteeism. After discussing problem identification, participants will receive guiding principles, templates, and other tools to integrate attendance intervention into existing teaming frameworks focused on addressing the needs of the individual students (SAT, SBLC, etc.). Participants will participate in action-planning to grow their existing student support systems concentrating on developing, implementing, and tracking Tier 2 supports.</p>	<p>Dr. Gwendolyn Murray</p> <p><i>LSU Attendance Alliance</i></p>
<p>St. Martin</p>	<p>U.S. Army Unique Opportunities</p> <p>Our goal is to provide unique insight to educational and career opportunities that come with service in the Army. Key leaders and educators will be prepared to inform their students and families about their options after attending this session</p>	<p>CPT Kevin Finerty Calethia Thompson Shane McCarthy</p> <p><i>U.S. Army</i></p>



<p>St. Mary</p>	<p>AED: Help the Heart of Your Schools Re-establish an Effective Rhythm Through Attendance, Engagement and Discipline</p> <p>This interactive workshop provides participants with strategies/interventions school-level attendance teams can utilize to build “AED” plans for their schools. Participants will discuss what attendance, engagement, and discipline looks like on their campuses, challenges they’ve observed, and interventions from a multi-tiered systems of support approach.</p>	<p>Shelneka Adams-Marsalone</p> <p><i>Child Welfare and Attendance LDOE</i></p>
-----------------	---	--