



Piecing it Together: Braiding Federal and State Funds to Maximize CTE Potential in Louisiana Classrooms

Welcome to a discussion about how we can leverage available funds to create robust and impactful CTE programs for Louisiana students. This presentation will explore how effectively braiding state and federal resources can lead to a more comprehensive and successful approach to CTE.



by **Shelley Gill & Keisha Ward**

Presentation Objectives

- 1 Understand the concept of braiding funding for CTE programs
- 2 Learn about specific funding streams in Louisiana (Federal and State)
- 3 Explore strategies to maximize resources for student success
- 4 Discover real-world examples and about Bogalusa City Schools Practices



What is Braiding?

Definition

Coordinating multiple funding streams to achieve a shared goal while maintaining compliance.

Benefits

- Fills funding gaps
- Encourages collaboration
- Enhances program sustainability

Agenda

1. Welcome & Introduction
2. Understanding Braiding of Funds
3. The Jigsaw of Funding: Key Funding Streams in Louisiana
 - State Funding Sources
 - Federal Funding Sources
4. Aligning Goals & Needs Assessments
5. Braiding in Action: Strategies for Success
6. Overcoming Barriers & Challenges
7. Case Study: Bogalusa City Schools Approach
8. Maximizing CTE Potential for Louisiana Students
9. Call to Action: Piecing It Together
10. Q&A & Closing Remarks



The Jigsaw of Funding

Each funding source is a unique puzzle piece.

Together, they create a complete picture of CTE success.

The key is aligning goals and ensuring each piece fits while staying in compliance and taking advantage of all your resources.

Key Funding Streams in Louisiana

State Funding	Federal Funding
CTE 6%	Perkins
Career Development Fund (CDF)	Title I
Supplemental Course Allocation (SCA)	Title IV
TOPS Tech Early Start	Title V
Registered Apprenticeship & Internships (1-time funding)	Title II



State Funding: CTE 6%

What It Is

A dedicated portion of state funds allocated to support CTE programs in schools.

Each secondary career and technical education course unit per student for both the fall and spring semesters are provided a weight of 6%. Exact per pupil amounts vary by school system. Source Data: October 1 EdLink course data submission

Usage

- Equipment and supplies
- Professional services
- personnel

State Funding: Career Development Fund (CDF)

What It Is

Each qualifying student course enrollment for grades 9 through 12 is provided 6% of the MFP State and Local Base Per Pupil. The 2022-2024 amount is \$241

Usage

Teacher training or certification, including externship stipends, and course tuition; equipment and facilities aligned to pathways (includes the cost of student industry-based credentials as well as career awareness and career counseling software and services); technology licenses / equipment necessary to implement CDF-qualifying courses; transportation to facilities where students will be taking a CTE course related to a Jump Start statewide credential

State Funding: Supplemental Course Allocation (SCA)

What It Is

Funding for students to access advanced or specialized courses outside their traditional schools, provided by BESE approved Course Choice providers.

Usage

- Dual enrollment programs/tuition
- Online learning platforms

State Funding: TOPS Tech Early Start

What It Is

A scholarship program for high school juniors and seniors pursuing technical education. The TOPS Tech Early Start award provides up to \$600 per academic year for any eligible 11th or 12th grade student attending a Louisiana PUBLIC high school who wishes to concurrently enroll for up to six credit hours per semester in order to pursue certification in an Eligible Program at a public or nonpublic college or an approved training provider

Usage

- A TOPS-Tech Early Start Award may be used to fund any technical or applied course leading to an Industry-Based Certification, a Certificate of Applied Science, and a Certificate of Technical Sciences offered at a Louisiana Public or nonpublic postsecondary education institution or by any Louisiana training provider recognized by the Louisiana Workforce and approved by BESE when such certification or certificate is approved by the Workforce Investment Council

State Funding: Apprenticeship & Internship Support

What It Is

The allocation shall be utilized to support all of the costs associated with delivery of the apprenticeship services to the students.

The allocation shall be utilized to support all of the costs associated with delivery of services of the approved internship services to the students.

Federal Funding: Perkins

What It Is

Federal funding to strengthen CTE programs and increase student access.

Usage MUST align
with CLNA – Use
Flow Chart

Federal Funding: Title I eligible Schools

What It Is

Funding to support schools with a high percentage of low-income students.

Usage – Must Support SWP Needs Assessment

- Academic support in CTE-related areas (e.g., STEM)
- Supplemental resources for struggling students

Federal Funding: Title II

What It Is

Funding to support schools with an emphasize on improving the quality of CTE instruction through targeted professional development for teachers, faculty, administrators, and other staff

Usage

- Professional Development
- Teacher Recruitment & Retention
- Address Equity and Access

Federal Funding: Title IV

What It Is

Funding for well-rounded education, including CTE.

Usage – Must Align to Comprehensive Needs Assessment

- Safety initiatives
- Promoting innovation in CTE
- Well rounded Programs
- STEM
- College and Career Readiness
- Dual Enrollment/AP
- Technology Skills Professional Development

Federal Funding: Title V

What It Is

Funding for innovative programs and services in schools.

Usage

- Supporting pilot CTE projects
- Developing creative learning initiatives
- Supporting Dual Enrollment
- Increasing WBL opportunities

Finding the Common Ground: Aligning Goals & Needs Assessments

- Focus on shared outcomes:
 - Workforce readiness.
 - Increased access to internships and apprenticeships.
 - Equity in education.
 - Supporting underserved populations.
- Review all the Combined Needs Assessments (AI is your friend)
 - Perkins
 - Title I (SWP)
 - Title IV



Braiding in Action: Key Strategies



Coordinate

Align program planning with funding timelines and objectives.



Integrate

Use funding streams to complement one another (e.g., Perkins for equipment, SCA for course fees).



Leverage

Prioritize resources to fill gaps (e.g., IBCs funded with CDF and supported by equipment purchased with Title IV).



Document

Maintain transparency and accountability to comply with federal and state guidelines.



Overcoming Barriers



- Complexity of fund coordination
- Lack of understanding of guidelines
- Limited staff capacity
- Elephants and Cows in the puzzle – Every district has them, this does not make them bad, they are often a necessity, the challenge is addressing them, visualizing how much of the puzzle they take up.

Solutions

- Professional development
- Collaboration with state and federal partners
- Leveraging technology to track fund usage. Use AI to help compare needs Assessments.



What we do in Bogalusa

1

Look at What CTE

Needs

What are our plans for the current year
and the upcoming years

2

Look at all the essential needs assessments & plans

Perkins CLNA

Title I SWP

Title II Plan

Title IV CNA

3

Begin Our Jigsaw

Puzzle

We start with our borders and middle
pieces and fill in the remainder to get
full pictures.



*Jigsaw Puzzle Activity – Hands On
with real BCS examples of 3 different CTE
classes funded with multiple funding sources.*

Compliance Check!!! LDOE, DOE, & EDGAR

Maximizing CTE

Potential

1 Enhanced student outcomes

2 Increased access to CTE programs

3 Stronger industry partnerships

4 Greater equity in education



Maximizing CTE Potential

1

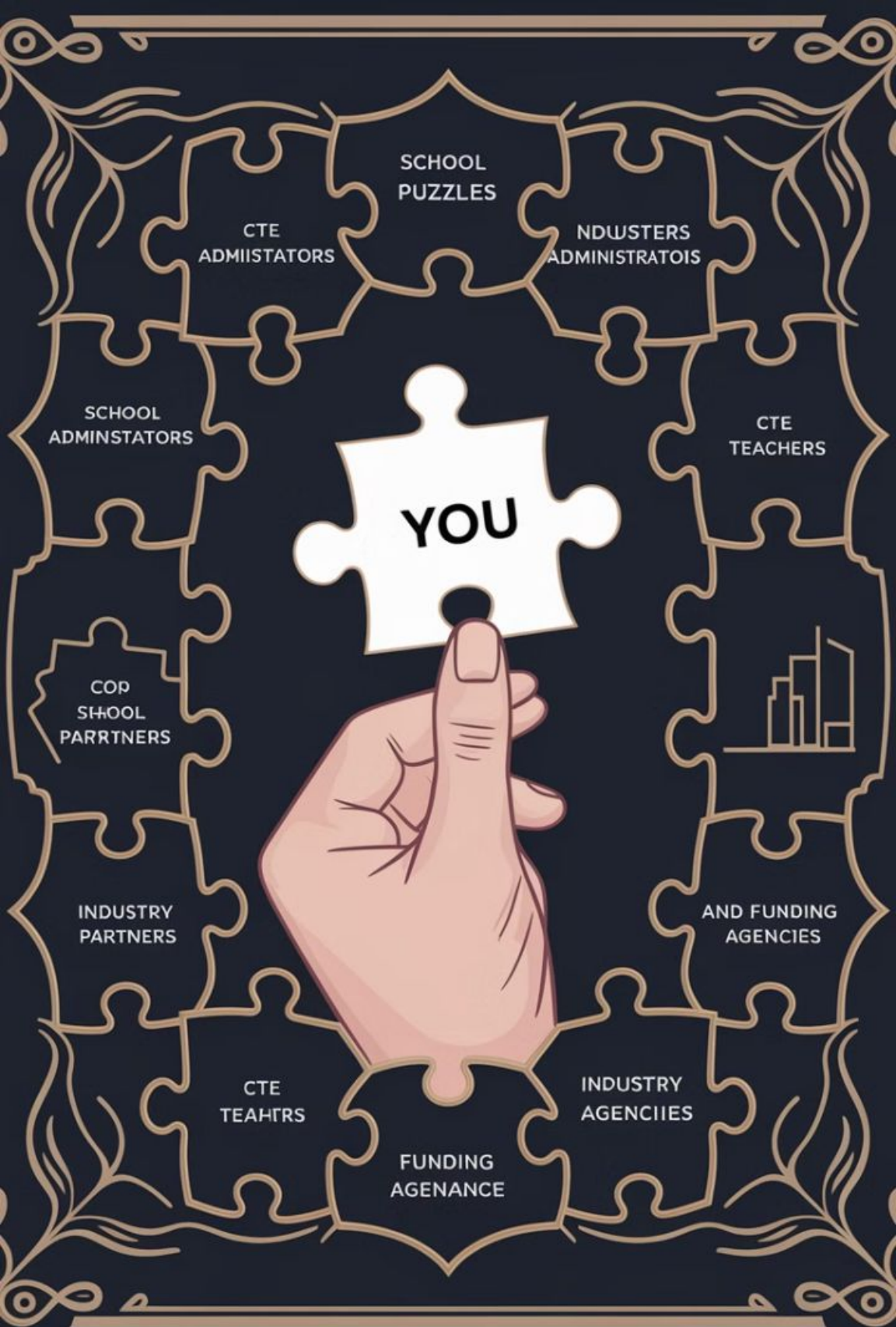
Enhanced student outcomes

Students benefit from more comprehensive and impactful CTE programs that cater to their individual needs and career goals.

2

Increased access to CTE programs

More students have the opportunity to pursue their passions and develop the skills necessary for success in the 21st-century workforce.



Let's Piece It Together!

Partner with stakeholders

Develop a shared vision and a collaborative funding strategy.



Identify gaps

Analyze current funding practices to identify areas where additional resources could be allocated.



Questions and Next Steps

Let's work together to build a brighter future for CTE in Louisiana!

Contact Information

Shelley Gill

Supervisor of Federal Programs/CTE

Bogalusa City Schools

skgill@bogschools.org

Keisha Ward

Schoolwide Coordinator

Bogalusa City Schools

keishaward@bogschools.org