



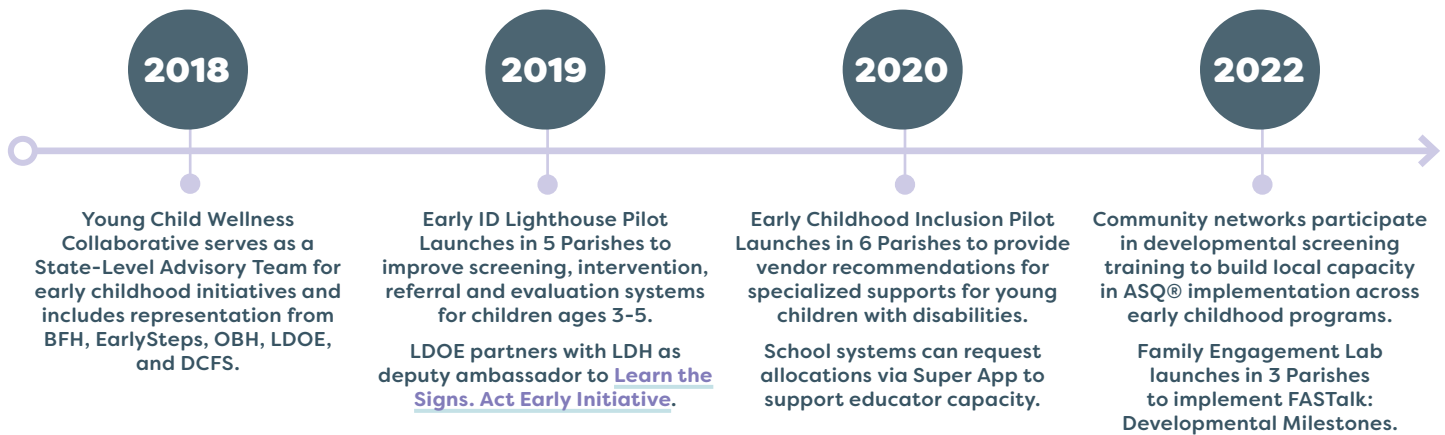
EARLY AND ACCURATE IDENTIFICATION

SUPPORTING YOUNG CHILDREN WITH DISABILITIES

Louisiana is committed to creating equitable and inclusive learning experiences for all children that prepare them to learn, grow, and succeed. In order to improve outcomes for all children, regardless of their individual needs, Louisiana is supporting initiatives that will develop coordinated screening, intervention, and referral systems to support children across key transition points and recommend partners that can deliver professional development and specialized support to develop the capacity of educators that support young children with disabilities.



TIMELINE



REFLECTIONS FROM THE FIELD

"The Lighthouse Pilot has brought together a district team from many departments to look at our efforts to identify the needs of our children earlier, and use a systematic approach which we currently do not have in place."

~ LAFAYETTE LIGHTHOUSE PILOT

"Having the ability to use the Ages and Stages Questionnaire (ASQ)® online platform, as well as the ability to share an ASQ® access link to parents, provides ease for administration of the screener."

~ DESOTO LIGHTHOUSE PILOT

"This pilot has been so valuable in giving our special education and early childhood teams an opportunity to work together and collaborate around best practices within inclusive early childhood classrooms."

~ ASCENSION INCLUSION PILOT

WHAT'S NEXT IN LOUISIANA?

The LDOE will increase inclusive opportunities for children through expanded access to quality early childhood programs through five key levers:

- **Family Engagement:** School systems and families understand developmental milestones, and have a clear plan for what to do when children do not meet them.
- **Unified Systems:** There is a strong inter-agency plan that addresses all children's needs as they transition from Part C to Part B services.
- **Systematic Screening:** Every child is screened at the appropriate entry point using a validated screening tool and school systems can use that data to inform instruction and interventions.
- **High-Quality Instructional Tools:** Specialized and related supports are available to school systems so children have an opportunity to learn in the least restrictive environment.
- **Increased Alignment:** Resources will meet national inclusion standards and include specific strategies to support the needs of children with disabilities.

