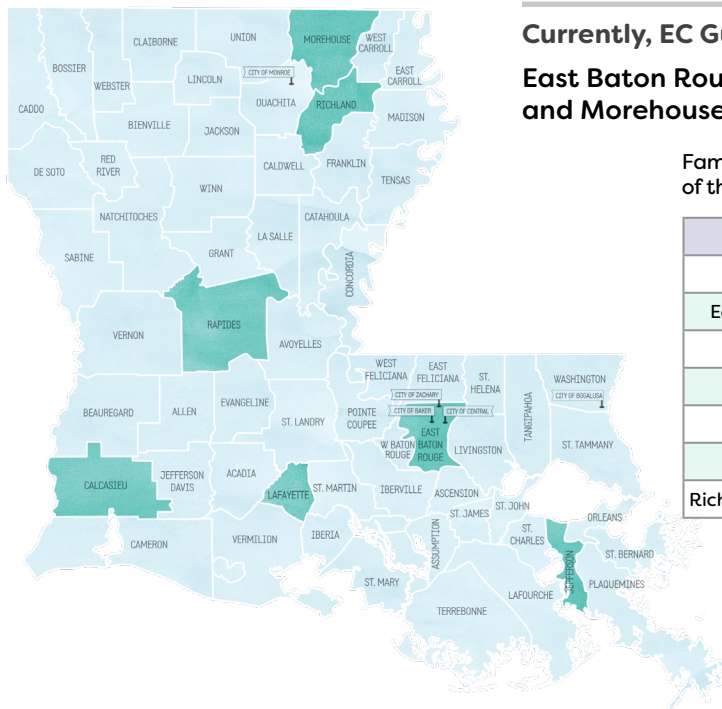
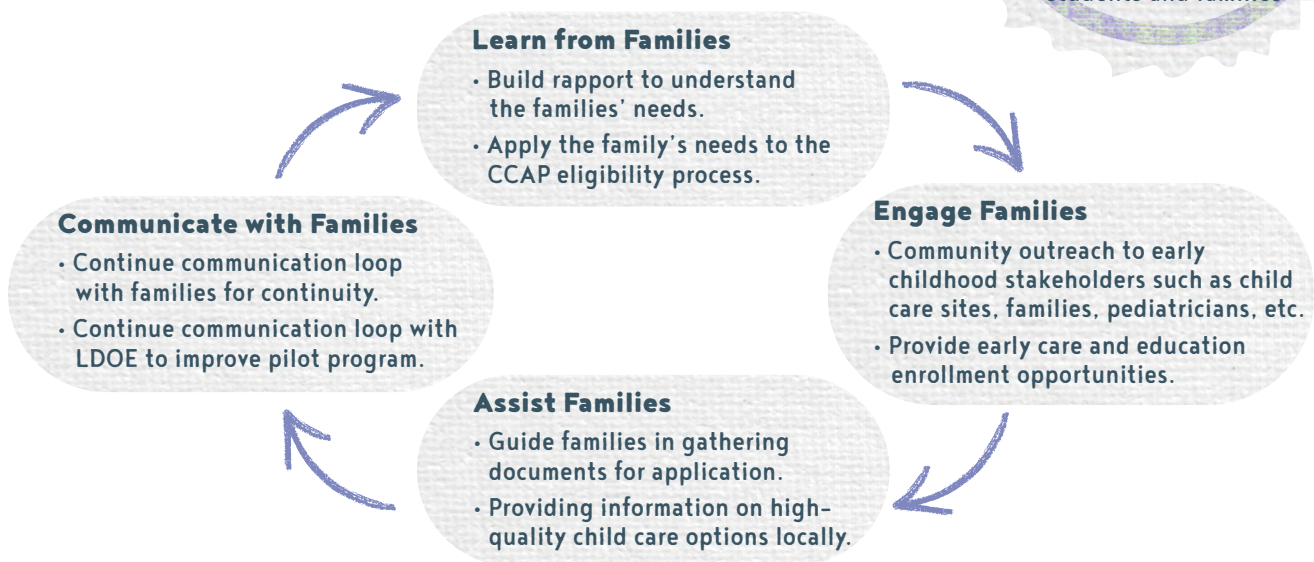




## WHAT ARE EARLY CHILDHOOD GUIDES?

The Early Childhood Guides (EC Guides) are local enrollment coordinators who help families apply for Child Care Assistance Program (CCAP) and learn about child care options in their community. As part of this pilot program, EC Guides provide individualized assistance to families throughout the application process for child care assistance. EC Guides are currently located in five parishes and will engage and assist families in the application, documentation, and eligibility process for CCAP. The main responsibilities of the EC Guides are to:



### Currently, EC Guides are located in seven Parishes:

**East Baton Rouge, Calcasieu, Jefferson, Rapides, Lafayette, Richland, and Morehouse**

Families who are planning to enroll children in centers accepting CCAP in any of these parishes can contact the parish's EC Guide to set up an appointment:

Parish	Guide	Email
Calcasieu	Phaedra Bushnell	<a href="mailto:phaedra.bushnell@cpsb.org">phaedra.bushnell@cpsb.org</a>
East Baton Rouge	Kanetra Brooks	<a href="mailto:kbrooks2@ebschools.org">kbrooks2@ebschools.org</a>
Jefferson	Jezebel Asencio	<a href="mailto:jezabela.asencio1@jpschools.org">jezabela.asencio1@jpschools.org</a>
Jefferson	Kimberly Jones	<a href="mailto:kjones.ccap@gmail.com">kjones.ccap@gmail.com</a>
Lafayette	Sarah Downs	<a href="mailto:smdowns@lpssonline.com">smdowns@lpssonline.com</a>
Rapides	Trinity George	<a href="mailto:trinity.george@rpsb.us">trinity.george@rpsb.us</a>
Richland & Morehouse	Renequa Ross	<a href="mailto:rross@childrenscoalition.org">rross@childrenscoalition.org</a>

### Are you a family or parent interested in CCAP?

Reach out to the EC Guide closest to you, or apply through the [family portal](#).