



HOW DOES THE LOUISIANA DEPARTMENT OF EDUCATION SUPPORT EARLY CHILDHOOD?

The Louisiana Department of Education has worked towards achieving the critical goal of kindergarten readiness by focusing on the following priorities.

1. Cultivate high-impact systems, structures, and partnerships.

- Supporting early childhood community networks to become Ready Start Networks, taking on the work of expanding access to high-quality early care and education locally
- Launching shared services and other initiatives to strengthen the coordination of Louisiana's early childhood mixed delivery system

2. Remove barriers and create equitable, inclusive learning experiences for all children.

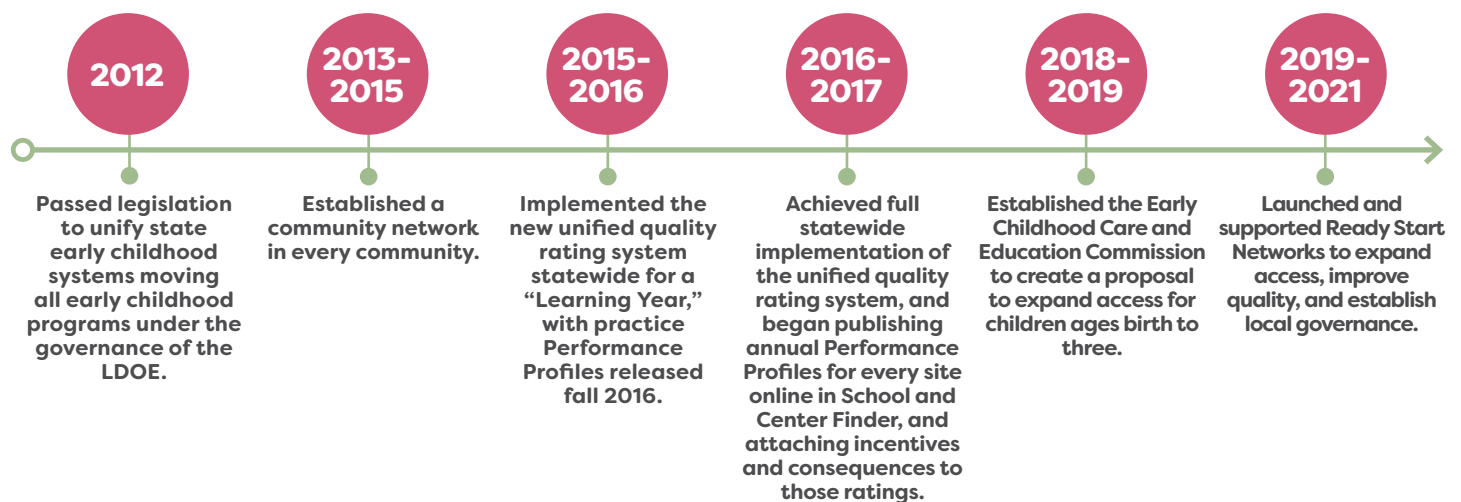
- Launching pilots and other initiatives designed to increase access to high-quality early care and education options for economically disadvantaged families in every community
- Increasing inclusive practices for young children with disabilities and dual language learners

3. Develop and retain a diverse, highly effective educator workforce.

- Ensuring that the early childhood workforce can access scholarships to attend BESE approved Early Childhood Ancillary Certificate programs that successfully prepare teachers to deliver high-quality early care and education
- Creating opportunities for early childhood leaders to develop skills and competencies to implement an ambitious vision for children's learning
- Incentivizing workforce retention through School Readiness Tax Credits (SRTC)

4. Provide the highest quality teaching and learning environment.

- Implementing a nationally recognized unified quality rating system for all early childhood program types using the CLASS® tool
- Aligning quality improvement supports including developmentally appropriate and standards-based instructional tools, such as high quality curriculum and assessments, that enhance adult-child interactions





In 2015-2016, only 6 of 10 publicly-funded early care and education programs were rated as Proficient or above.



This number grew to **more than 8 out of 10 in 2018-2019**, which amounts to more than 52,000 children offered high-quality, publicly-funded early care and education in Louisiana today.

WHAT'S NEXT FOR THE EARLY CHILDHOOD INITIATIVE?

The Department of Education continues to support communities to lead efforts to build coalitions, establish governance structures, and generate new local funding to expand access to quality early learning programs for Louisiana's youngest learners.

**WHO TO
CONTACT?**
EARLYCHILDHOOD
@LA.GOV
OR VISIT OUR
WEBSITE