

Louisiana's
**ACADEMIC
STRATEGY**

Louisiana students are *smart* and *capable*.



The percent of centers that serve at-risk children, that scored **Proficient and above**, has **grown 15%** since the inception of Louisiana's early childhood rating system.



The percent of students scoring **Mastery and above** on LEAP ELA and math tests has **increased 15%** since 2013.



Since 2012, the number of students scoring a **21 or higher** on the ACT has **increased by nearly 40%**.



5,000 more students graduated in the class of 2018 than in the class of 2012.



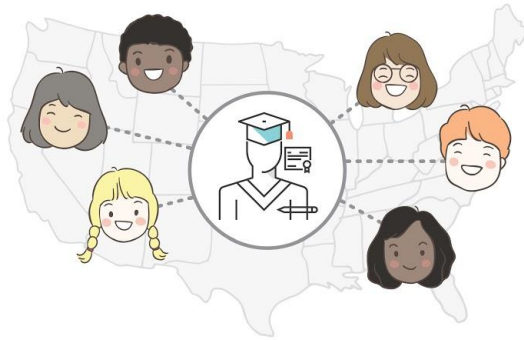
Since 2012, the number of students earning **AP credit for college** has **increased by 167%**.

Every day in Louisiana, educators are committed to making sure that all students and schools have the opportunity to grow and thrive.

By 2025, Louisiana's K-12 education system will...



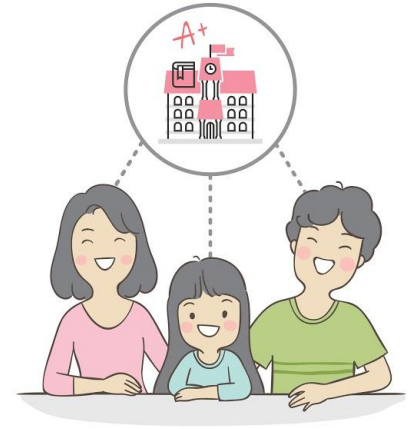
ensure students are ready for the next level of study,



give all students access to the same opportunities as their peers across the country,



require comprehensive support for struggling schools and groups of students, and



provide families and communities with an accurate picture of school, center, and system performance and quality.

Every day, all **students** are in schools that treat them with dignity and respect and where they have the opportunity to...



+



+



+



build knowledge
of the world,

read
meaningful texts,

express ideas through
writing and speaking, and

solve
complex problems.

All **teachers** are fully prepared to deliver high-quality instruction every day and are supported by...



*Principals, Content Leaders,
and Mentor Teachers*

- ✓ using **observations, common planning time, and coaching** to support teachers



School Systems

- ✓ creating supportive structures to facilitate **teacher preparation and student learning**



*The Louisiana
Department of Education*

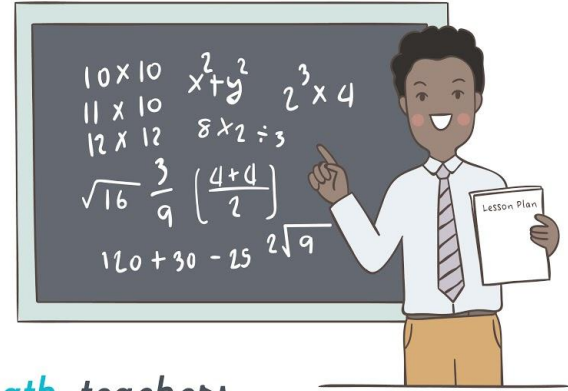
- ✓ providing tools and resources to **support school systems** in executing academic plans

Every day in Louisiana, **teachers** should be prepared to deliver lessons using high-quality, curriculum aligned materials.



» *In English, teachers*

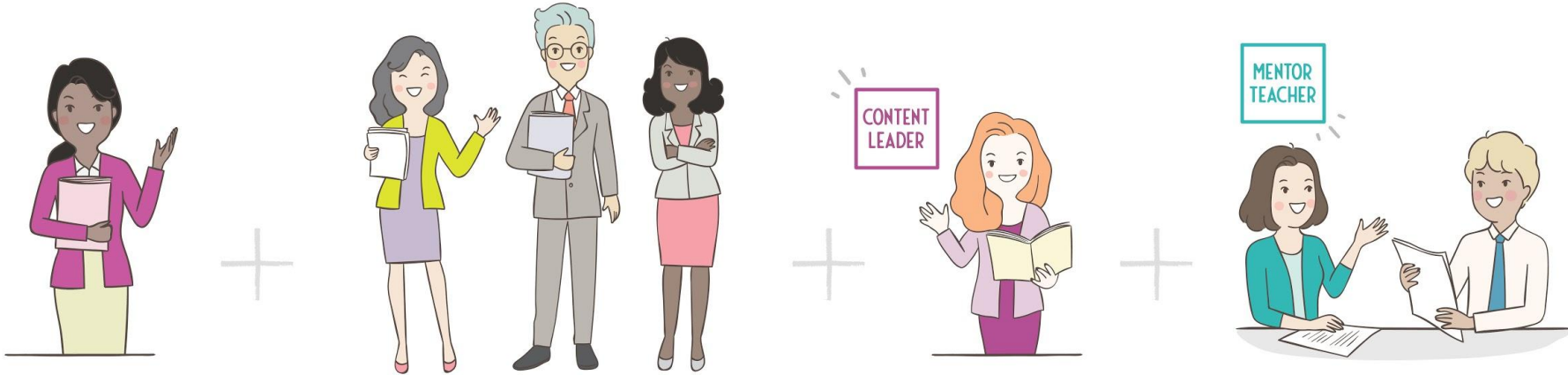
- ✓ Annotate lesson plans from high-quality curriculum
- ✓ Read all the texts and use prompts in curriculum to discuss texts with peers
- ✓ Identify the range of responses in writing and speaking tasks that indicate mastery of the standards
- ✓ Identify the questions within each lesson that the teacher will use to support students to master the lesson



» *In math, teachers*

- ✓ Annotate lessons from high-quality curriculum
- ✓ Identify the key models and strategies students will need to use to master the lesson and unit content
- ✓ Solve conceptual understanding problems in the lesson using key models and strategies in the unit
- ✓ Identify where within the lesson students will struggle and plan for how to support students

Principals, leadership teams, Content Leaders, and Mentor Teachers use classroom observation, common planning time, and one-on-one coaching to support each teacher to prepare for and deliver instruction.



Principals

- ✓ Ensure every teacher in the building has foundational training on the curriculum, common planning time, regular observations, and one-on-one coaching as appropriate

School Leadership Teams

- ✓ Lead common planning time focused on instructional preparation
- ✓ Observe instruction using the classroom observation tools to support teachers with delivering instruction

Content Leaders

- ✓ Redeliver six content modules focused on providing teachers foundational knowledge of the curriculum

Mentor Teachers

- ✓ Coach residents, new teachers, and struggling teachers on planning and delivery of instruction

School system leadership ensures principals and their leadership teams have the time, tools, and resources to support teachers to prepare for and deliver instruction.



All Teachers

- ✓ Have access to high-quality curriculum materials and training on those materials to deliver effective instruction daily



School Leadership

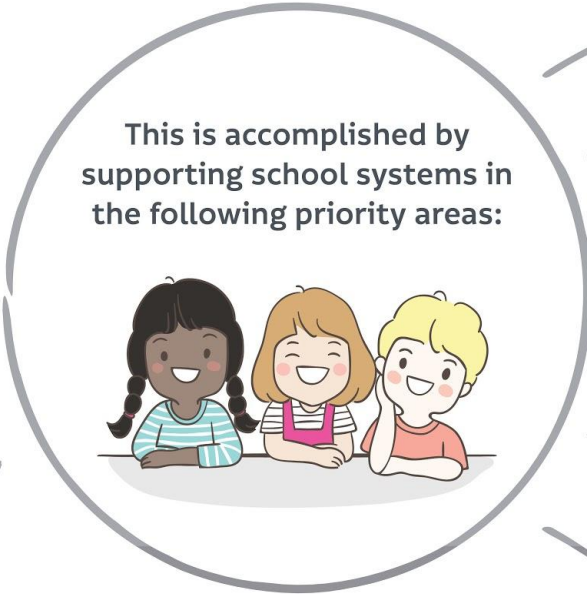
- ✓ Has identified leadership team to lead common planning, observe teachers, and provide one-on-one coaching
- ✓ Builds a master schedule that includes common planning time



School System Leadership

- ✓ Models use of classroom and common planning time observation tools

The **Louisiana Department of Education** is committed to ensuring that every child and school has the opportunity to grow and thrive.



Unified Early Childhood Systems



Academic Alignment



Teacher and Leader Preparation



Pathways to College or a Career



Targeted Support for Struggling Schools