

Louisiana Believes

Vendor Partner Call
February 21, 2020

Agenda

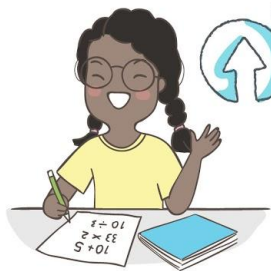
- Louisiana's Academic Strategy
- Department Updates
 - School System Planning
 - Vendor Guides
 - Approved Mentor/Content Leader Training
 - Instructional Materials Review (IMR)
 - Teacher Leader Summit
- Next Steps

Louisiana's
**ACADEMIC
STRATEGY**

Louisiana students are *smart* and *capable*.



The percent of centers that serve at-risk children, that scored **Proficient and above**, has **grown 15%** since the inception of Louisiana's early childhood rating system.



The percent of students scoring **Mastery and above** on LEAP ELA and math tests has **increased 15%** since 2013.



Since 2012, the number of students scoring a **21 or higher** on the ACT has **increased by nearly 40%**.



5,000 more students graduated in the class of 2018 than in the class of 2012.



Since 2012, the number of students earning **AP credit for college** has **increased by 167%**.

Every day, all **students** are in schools that treat them with dignity and respect and where they have the opportunity to...



+



+



+



build knowledge
of the world,

read
meaningful texts,

express ideas through
writing and speaking, and

solve
complex problems.

All **teachers** are fully prepared to deliver high-quality instruction every day and are supported by...



*Principals, Content Leaders,
and Mentor Teachers*

- ✓ using **observations, common planning time, and coaching** to support teachers



School Systems

- ✓ creating supportive structures to facilitate **teacher preparation and student learning**



*The Louisiana
Department of Education*

- ✓ providing tools and resources to **support school systems** in executing academic plans



School System Planning

2020-2021 CIR and UIR-Academics Strategy

Next school year, 2020-2021, CIR and UIR-Academics schools have continue to have these requirements:

1. High quality curriculum and assessments in all grades, PK-12, in English and math
2. High quality professional development for all teachers on the selected curriculum
3. Teacher preparation partner to address schools' greatest workforce needs
4. Building school-based expertise through Content Leader, Intervention Content Leader, and/or Mentor Teacher participation

2020-2021 CIR/UIR Requirements

The following requirements have been added for CIR and UIR schools:

1. **Professional Development Plan:** CIR schools plan for content module redelivery and unit unpacking.
2. **Post-secondary planning partner:** CIR high schools have a partner to support Individual Graduation Plans (IGPs).
3. **Identified UIR-D school system leader:** School systems choose a leader responsible for coordinating the UIR-Discipline planning process.

Additional Opportunities for Funding

1. **Science:** School systems can apply for funds to support the purchase of science curricula, the training of teachers on this curricula, and the participation of teachers in Science Content Leaders.
2. **Special Education:** School systems can apply for funding for professional development on specialized supports for schools with a UIR label for the students with disabilities group.
3. **Early Childhood:** School systems submit their vision and plan to increase access and quality for birth through four-year-old children and may receive funding to support these plans.

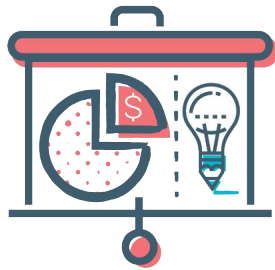
Louisiana School System Planning Process



CREATE A PLAN

School systems review data and identify priorities for the coming year.

+



DEVELOP AN ALIGNED BUDGET

School systems budget formula funds and request competitive funds in alignment with priorities.

+



IMPLEMENT WITH SUPPORT

School systems implement approved plans with support from Network teams and vendor partners.

Super App Timeline

November 2019	Department launched planning process and resources for 2020-2021.
November 2019 - January 2020	Department and Network teams supported school systems to develop plans.
February 7, 2020	School systems submitted plans.
April 2020	Department approves or rejects plans. BESE approves funding for Department-approved plans and school systems begin implementation.

The background of the slide is a watercolor-style illustration. It features a central white area that tapers towards the top, surrounded by various shades of blue and teal. The colors are blended and textured, giving it a soft, artistic appearance. The overall composition is balanced and modern.

Vendor Guides

Vendor Homepage and Catalog

[Vendor Partner Homepage](#)

Provides a landing page for vendors to get up-to-date information

[Vendor Catalog](#)

Provides information about each vendor guide across all areas of support.



Vendor Catalog

Every day in Louisiana, educators are committed to ensuring that all students and schools have the opportunity to grow and thrive. To support school systems and educators, the Department has released vendor guides to facilitate partnerships between school systems and organizations that can provide high-quality support in various areas. This overview provides information about each vendor guide. These guides are an integral component of [Louisiana's school system planning process](#).

Domain	Document Link	Use this tool to:
Core Academics	Academic Content Professional Development Vendor Guide	Identify training and support on Tier 1 curricula
	AP Professional Development and Support Vendor Guide	Identify in-person professional learning and exam preparation for advanced placement programs.
	Post-secondary Planning Partners	Identify partners to support individual student graduation planning, exploring post-secondary and career options, and researching financial aid possibilities.
Students with Diverse Needs	Partnerships for Success Vendor Guide	Identify partners to support students with disabilities by providing specialized training to educators in specialized support; and/or providing direct services as required by a student's IEP.
	Student Engagement and Success Partners	Identify partners to support the evaluation, redesign, planning, and implementation of a comprehensive system that provides student support, engagement, and evidence-based behavioral interventions and curriculum/programs.

Academic Content PD Vendor Guide

The [ACPD Vendor Guide](#) will continue to be used by school systems to identify PD partners.

The [User Guide](#) is available to help vendors who want to submit to the PD Vendor Guide.



LOUISIANA ACADEMIC CONTENT PD VENDOR GUIDE

THEORY OF ACTION

Students make meaningful growth when

- They use a high-quality curriculum every day;
- Teachers have initial and ongoing professional development that helps them use that curriculum effectively; and
- Teachers use data from a limited number of standards-aligned, non-summative assessments which measure how well students are meeting the outcomes of the high-quality curriculum.

PURPOSE

Schools systems use this guide to identify vendors who provide initial and ongoing training for **Tier 1 curricula**. It identifies vendors who specialize in helping districts and schools with designing and implementing a cohesive academic system focused on high-quality curriculum, professional development, and assessment. Successful implementation of high-quality curriculum and assessments requires the following:

1. INITIAL SUPPORT

Provide pre-service PD for teachers and leaders that builds their familiarity with the structure, approach, and key components of high-quality curricula and assessments.

2. ONGOING, FOCUSED COACHING

Build teachers' and leaders' ability to use the high-quality curricula and assessments; deepen knowledge of content and content pedagogy; build skill in using student data to meet the needs of all learners; and demonstrate how to use walk-through observations to foster teacher leadership, collaboration, and improved implementation.



November 2020 Academic Content PD Vendor Guide Launch Update

We are in the process of planning for the PD Vendor Guide for the November 2020 release.

The goal is to clearly define the PD available so that school systems can make informed choices. We will communicate and gather feedback from vendors in the coming months as we finalize our November 2020 plan.

Updates will include:

- Submission and revision timelines
- Collection of additional information from new and current PDVG vendors

Proposed PDVG Submission Timeline

April 1	Submissions/revisions open
July 31	Submissions/revisions close*
August-October	Review of submissions/revisions
November	Updated PDVG released with the Super App

*only contact updates or newly posted Tier I PD will be accepted after submissions close.

The background of the slide is a watercolor-style illustration. It features a central white area that tapers to a point at the top, surrounded by various shades of blue and teal. The colors are blended and textured, creating a soft, artistic feel. The overall composition is balanced and visually appealing.

Mentor and Content Leader Training

Approved Mentor/Content Leader Training

To develop a cadre of mentor teachers and content leaders in November 2017, **the Department launched a [statewide training opportunity](#) to prepare expert teachers to effectively serve in these roles.**


Additionally, in October 2018, [BESE established new state credentials for mentor teachers](#) and content leaders. The **Mentor Teacher** credential will be required beginning in September 2020 for individuals who serve as a mentor of undergraduate or post-baccalaureate teacher residents.

In order to be eligible for the ancillary certification a teacher must complete a state- approved training and pass the appropriate assessment series.

Approved Mentor/Content Leader Training

Requests to be approved to offer [mentor teacher and content leader](#) training must be submitted according to the below deadlines. Please contact believeandprepare@la.gov for application details.

Milestone	Spring 2020	Fall 2020
Application submission deadline	2/7/20	7/31/20
Evaluation period	2/7/20 - 3/20/20	7/31/20 - 9/11/20
Notification of evaluation results	3/20/20	9/11/20
BESE considers if recommended for approval	4/20/20	10/13/20

The background of the slide is a watercolor-style illustration. It features a central white area that tapers to a point at the top, resembling a stylized sun or a bright opening. This white area is surrounded by various shades of blue, from light sky blue to deep, dark teal. The colors are blended and layered, creating a soft, painterly effect. The overall composition is balanced and visually appealing, with the text centered in the white area.

2020-2021
IMR Process Updates

IMR Process Update Goals

As we work to streamline the IMR process, our goals are to

- simplify the submission process for publishers,
- share concrete and predictable timelines with stakeholders,
- release reviews quicker, and
- ensure the most updated materials, aligned to our current rubrics are made available to the field.

2020-2021 Annual Timeline: IMR Submission Process

January 1	Submissions open*
January 1 - May 31	Prescreening to determine eligibility of submission
May 31	Deadline for 2020-2021 submissions*
June - July	Queue of submissions ready for assignment
July - December	State reviews conducted, reviews released as completed

*All subject areas, excluding K-12 Science; Science submissions are accepted year-round

Step-by-step submission process that includes:

- submission requirements
- pre-screening procedures
- updated digital submission process

Guide is now available on the [IMR Guidance and Overview Documents](#) homepage.

Publisher's Guide for IMR Submission

Step 2: Prepare for the State Review

Instructions:

1. Create a shared folder (e.g., DropBox or Google Doc) and store all required/suggested documents as shown in the chart below. If you need additional information about sharing a google folder, please review these [instructions](#).
2. Upload the following documents as part of your online submission:

Required Documents / Templates	Submission Notes	Filename Convention (Submit as filename shown)
Submit Terms of Service	Eligibility requires vendors to initial each of the terms of service and to sign in agreement to the terms.	0_VendorName_Terms of Service.pdf
Submit documentation of alignment to state standards .	Prepare a state correlation document using the appropriate state standards .	1_VendorName_Correlation to Louisiana Standards.Title.Grade Level.doc/pdf
Submit documentation of alignment to rubric criteria and indicators .	Complete and submit an evaluation rubric for each grade/course level for review using the appropriate rubric.	2_VendorName_IMET.Title.Grade Level.doc/pdf
	Prepare a navigation guide and/or 20-minute	

Teacher Leader Summit

Louisiana 2020 Teacher Leader Summit

May 26, 2020

The Department will host our annual face-to-face Summer Partner Meeting.

May 27–29, 2020

The 2020 Teacher Leader Summit will take place at the Morial Convention Center in New Orleans. Thank you to the many partners that have already committed to providing trainings. We could not have the Summit without you!

2020 Teacher Leader Summit Objectives

This annual event will bring together roughly 6,500 educators and content experts who are focused on creating meaningful growth for every student, every day. Educators will share their knowledge, learn new skills, and prepare for the 2020–2021 school year.

- Improve the everyday practice of educators in Louisiana by building their knowledge and skill in key areas related to their role
- Provide opportunities for educators to collaborate and share best practices
- Introduce high-quality resources and professional development that can be adopted and scaled in schools and school systems across Louisiana
- Foster a culture that celebrates and engages educators and empowers and inspires them to take on an even greater leadership role within their classrooms, schools, and school systems



Next Steps

Next Steps: The Department

To support school systems and vendors as they work through the school system planning process, the Department will:

- meet with school systems and vendors to provide guidance as needed
- plan for the 2020 Teacher Leader Summit
- determine the communications structures for 2020 to facilitate strong Department/vendor partnerships (i.e., in person meetings, call schedules)

Next Steps: Vendor

To support schools/districts, vendors should:

- work with school systems on their PD needs for the 2020-2021 school year
- review PD Planning Guidance [resources](#)
- email LouisianaCurriculumReview@la.gov with questions and support

Next Steps: Save the Dates

Save the date for our in-person annual meeting:

Summer Partner Meeting

May 26, 2020

New Orleans, LA

More information coming soon...

Save the date for our next call:

Friday, July 17, 2020

Contact LouisianaCurriculumReview@la.gov with any questions.

Thank You

Contact us at LouisianaCurriculumReview@la.gov with any questions.