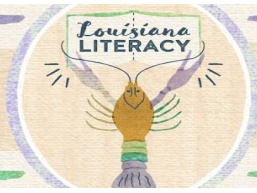


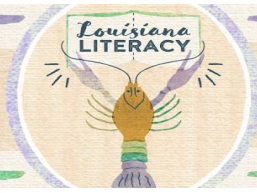
# Louisiana R.E.A.D. Program Report

## October 2022



## Table of Contents

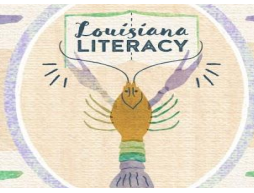
<b>INTRODUCTION</b>	<b>3</b>
<b>OVERVIEW</b>	<b>4</b>
LOUISIANA'S VISION FOR SUCCESS	4
MANAGING A FUNDAMENTAL SHIFT IN LITERACY INSTRUCTION	5
LOUISIANA COMPREHENSIVE STATEWIDE LITERACY PLAN	5
STUDENT ELIGIBILITY	6
TIMELINE FOR R.E.A.D. PROGRAM LAUNCH AND ADMINISTRATION	6
<b>STUDENT PARTICIPATION</b>	<b>7</b>



## INTRODUCTION

Act 395 of the 2021 Legislative Session, along with a supplemental \$5 million appropriation, launched the Louisiana Reading Enrichment and Academic Development (R.E.A.D.) Program outlining programmatic requirements including a report regarding the number of students participating in the program from each school or district.

The program provides the framework to distribute books to Louisianans enrolled in Pre-Kindergarten through Fifth grade programs with a demonstrated need for support in improving literacy. This initiative plays a critical component in the State's Comprehensive Literacy Plan. Following the 2022 Legislative Session, the Department took immediate action to begin planning for the launch of the R.E.A.D. initiative as soon as all the assessments necessary for determining eligibility were completed.

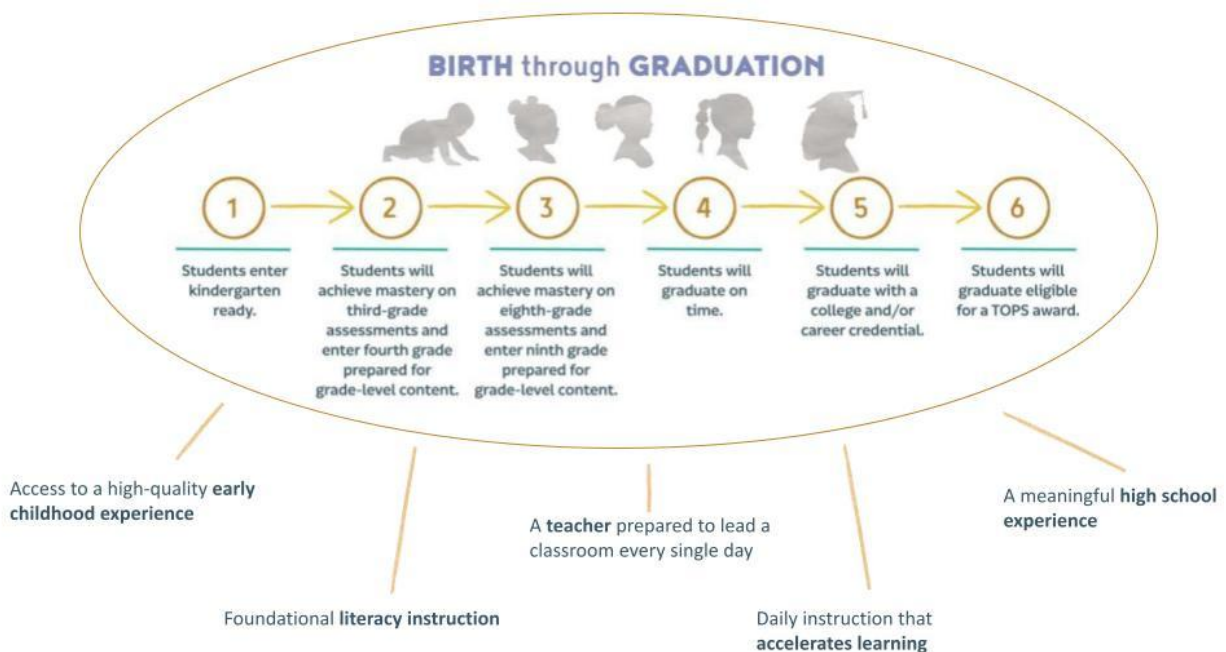


## OVERVIEW

There are several elements that are important to understanding the R.E.A.D. program, including the way the program fits in with the ongoing literacy instruction shifts in the state, the states' comprehensive literacy plan, student eligibility, and the timeline for program launch.

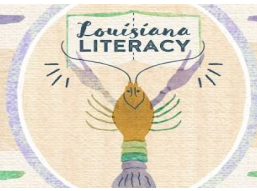
## LOUISIANA'S VISION FOR SUCCESS

The Department's Vision For Success is centered on six critical goals for students' educational journey from birth through graduation: that students enter kindergarten ready to learn, achieve mastery on third grade assessments and enter fourth grade prepared for grade-level content, achieve mastery on eighth grade assessments and enter ninth grade prepared for grade-level content, graduate on time, with a college and/or career credential, and graduate eligible for TOPS.



Foundational literacy instruction is one of several things that must be true in order to best position students for success along their educational journey. Other key supports include: access to a high-quality early childhood experience, a teacher prepared to lead a classroom every single day, daily instruction that accelerates learning, and a meaningful high school experience.





## MANAGING A FUNDAMENTAL SHIFT IN LITERACY INSTRUCTION

The R.E.A.D. program is a component of the ongoing initiatives at the Department to improve literacy outcomes for students across Louisiana that have been underway since 2020.

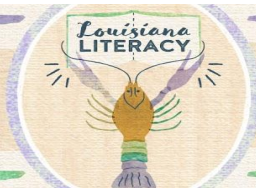


## LOUISIANA COMPREHENSIVE STATEWIDE LITERACY PLAN

The statewide shifts in literacy instruction are coordinated through the [Louisiana Comprehensive Literacy Plan](#) and centered on four pillars.



The R.E.A.D. initiative will play a critical component of the fourth pillar focused on family engagement and premised on the fact that families play an essential role in the literacy development of children at all ages and stages.



## STUDENT ELIGIBILITY

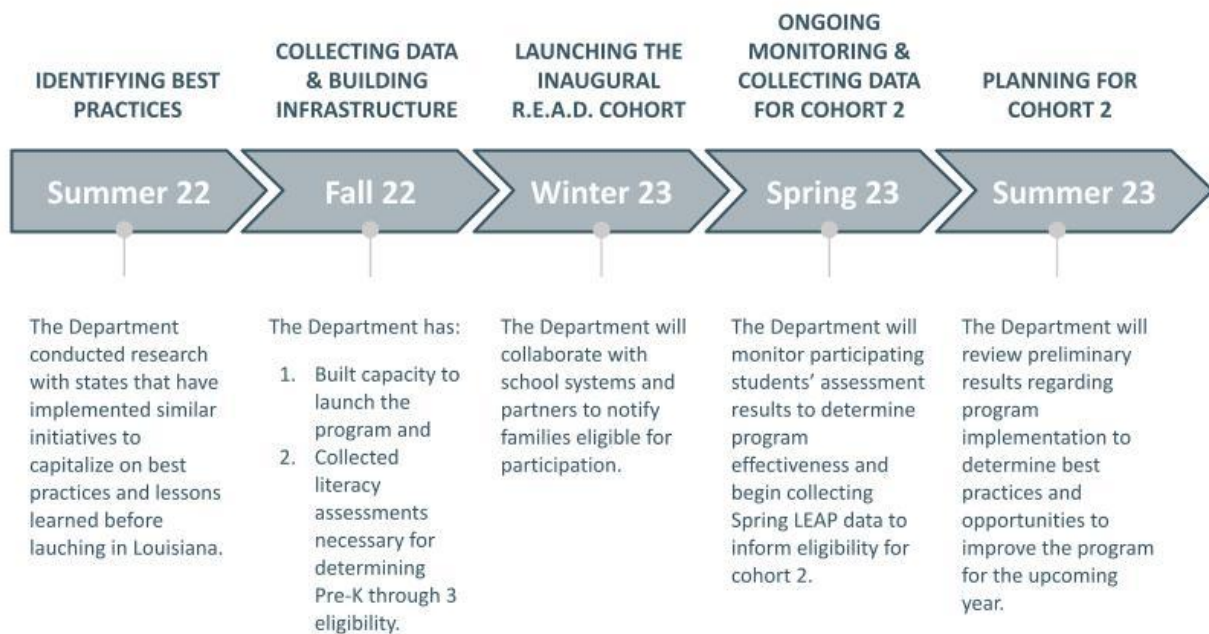
Act 395 of the 2021 Legislative Session enacted R.S. 17:4033.1 which began the R.E.A.D. program as well as determined student eligibility by grade level. The table below provides insight into student eligibility for the program.

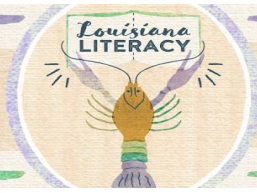
Student Age Group	Eligibility Criteria
Pre-Kindergarten*	Does not score satisfactorily on the literacy section of the Early Childhood Assessment administered by the state Department of Education.
Grades K-3*	Reads below grade level according to the results of a literacy assessment.
Grades 4-5*	Scores below mastery in English language arts on the state assessment administered the prior year.

\* If eligibility cannot be determined due to the lack of assessment results, a student may be eligible based on the recommendation of his English language arts teacher.

## TIMELINE FOR R.E.A.D. PROGRAM LAUNCH AND ADMINISTRATION

The Department has established the following timeline for the launch of the R.E.A.D. program to align the eligibility determinations and expansion with the program with the return of assessments critical for student eligibility.





## STUDENT PARTICIPATION

Given that the 2022-2023 school year will include the inaugural cohort of students participating in a R.E.A.D. program cohort, and cohorts will be identified immediately upon the conclusion of the necessary assessments to determine eligibility for Louisianans' in Pre-K through Fifth grade, the Department does not yet have data on students participating.

The Department will update this report annually with data for participating students by October 31.