



**LAE 2020 Virtual
Representative Assembly
April 10, 2021**

Dr. Quentina Timoll

Chief of Staff and Operations
Louisiana Department of Education



Louisiana 7th nationally for in-person instruction

"Louisiana schools have been at the forefront of safely providing in-person instruction this entire school year. National reports are starting to highlight what we've known for some time in Louisiana; daily face-to-face instruction can be safe and effective when following strong mitigation efforts like we have in our state." - Dr. Brumley



Believe to Achieve

The Department recently released [Believe to Achieve: Educational Priorities](#). This priorities plan serves as the Department's roadmap to improving outcomes for all Louisiana children.

Believe to Achieve includes the Department's new belief statements, state data to help track progress toward Louisiana's six critical goals, and the new priorities that will direct the LDOE's efforts as they work toward achieving the critical goals. Each priority outlines focus areas for the key actions and initiatives.

ACCESS

Believe to Achieve

Belief Statements

Louisiana Believes...



Children are our highest priority



Equity matters



Families are our partners



Choice expands opportunities



Educators are valued professionals



Schools are invaluable to communities



Graduates must be ready



Our future is bright



SIX CRITICAL GOALS

Students enter kindergarten ready.

Students will achieve mastery on third-grade assessments and enter fourth grade prepared for grade-level content.

Students will achieve mastery on eighth-grade assessments and enter ninth grade prepared for grade-level content.

Students will graduate on time.

Students will graduate with a college and/or career credential.

Students will graduate eligible for a TOPS award.

LOUISIANA SCHOOLS & STUDENTS

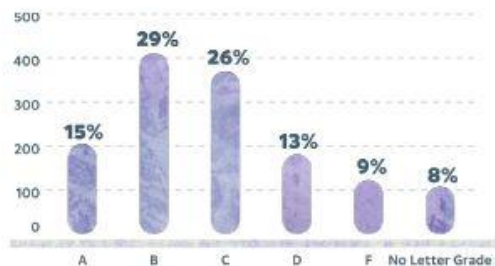
LOUISIANA SCHOOLS & STUDENTS

Local Education Agencies (LEAs)	191
Public and Nonpublic Schools	1,737
Public and Nonpublic Students	804,539
English Learners*	3.8%
Economically Disadvantaged*	74%
Students with Disabilities**	13%
Publicly-Funded Early Childhood Sites	1,629
Publicly-Funded Early Childhood Children	57,400

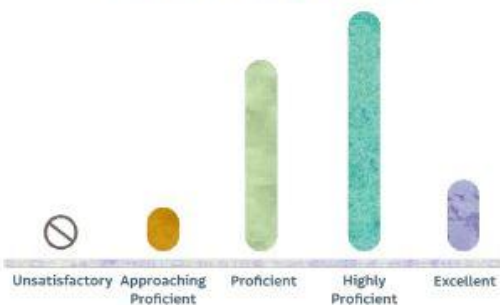
LOUISIANA'S NATIONAL EDUCATION RANKINGS

2020 Education Week Quality Counts	47th
2020 US News and World Report	48th
2019 NAEP 4th Grade Math	49th
2019 NAEP 4th Grade Reading	49th
2019 NAEP 8th Grade Math	48th
2019 NAEP 8th Grade Reading	44th

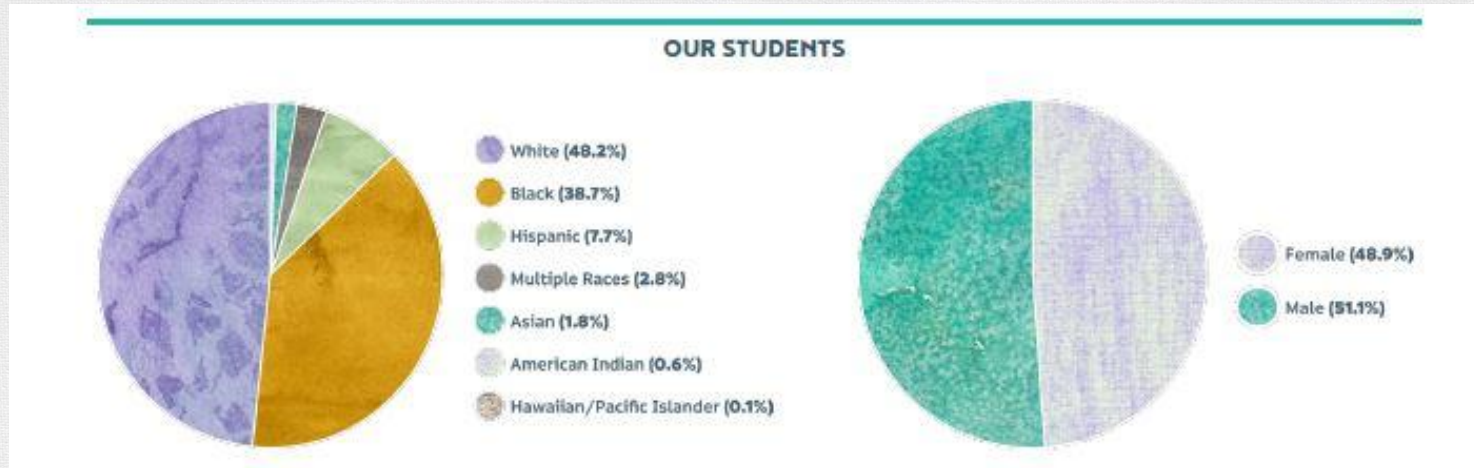
2019 SCHOOL LETTER GRADES



2019-2020 EARLY CHILDHOOD PERFORMANCE PROFILE RESULTS



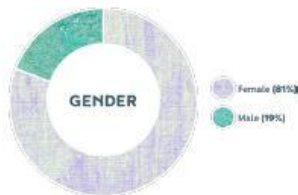
Our Students



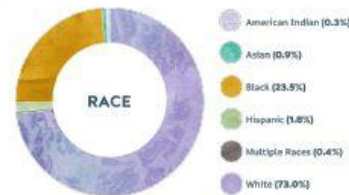
Our Educators

LOUISIANA EDUCATOR WORKFORCE

OUR TEACHERS (2019-2020)



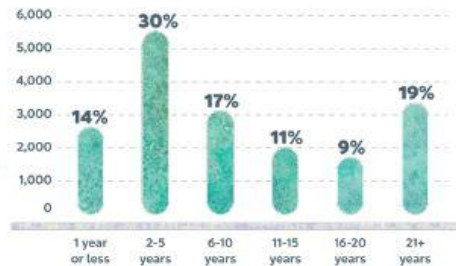
60 PERCENT OF LOUISIANA TEACHERS ARE WHITE FEMALES. 5 PERCENT ARE BLACK MALES.



TEACHERS BY CERTIFICATION STATUS (2019-2020)



YEARS OF PUBLIC SCHOOL EXPERIENCE OF EXITING TEACHERS (2016-2019)



Percentage of Early Childhood Education teachers certified statewide (2019-2020)



EDUCATIONAL PRIORITIES

Ensure every student is on track to a professional career, college degree, or service.

Remove barriers and create equitable, inclusive learning experiences for all children.

Provide the highest quality teaching and learning environment.

Develop and retain a diverse, highly effective educator workforce.

Cultivate high-impact systems, structures, and partnerships

Current Efforts



Current Efforts

As Louisiana continues to recover from the impacts of 2020, many of the supports that began in early 2020 are still being provided.

Early Childhood Supports:

- Reimbursing all CCAP authorized children
- based on enrollment rather than attendance
- Using the maximum daily CCAP rate
- Waiving CCAP copayments for families
- Providing grants to financially support centers
- Absorbing the fees for license renewals and CCCBCs
- Providing trauma informed supports and mental health supports

Pre-K-12 Supports

- Tutoring
- Summer learning programs
- Mental health supports
- *Achieve!* initiative (will include guidance and resources)
- Virtual Instruction Guide with expectations and best practices for Virtual Learning,
- Teaching and Learning Toolkit for Early Childhood and Pre-k-12 which included supports for students with disabilities and English Learners, technology distribution and training, staffing and scheduling models, continuous learning in core and non-core areas, and assessing and addressing unfinished learning
- School Support Institutes: Addressing Unfinished Learning Series (training for educators and leaders)
- Virtual Instruction PD for all teachers and leaders

LDOE + Ochsner Partnership: Educator Mental Health and Well-Being

- Ensuring the health, safety, and mental well-being of the school support staff that have been serving on the front lines for the good of Louisiana students is a top priority for the Department.
- The LDOE has just finalized a partnership with Ochsner Medical Center to offer **free teletherapy** to all educators and school support staff across the state.
- The Department has committed \$1M to this project to ensure that we can take care of those that are taking care of our students. **Educators and support staff will have access to four, completely free and 100% confidential counseling sessions with licensed mental health professionals.**

LDOE + Ochsner Partnership: Educator Mental Health and Well-Being

How will this work?

- Ochsner has built a custom, online platform and hired additional mental health professionals to staff this initiative specifically with the needs of our teachers and support staff in mind.
- Using a laptop, tablet, or smartphone, educators will be able to schedule and **participate in virtual teletherapy from anywhere** and, due to the increased staffing of Ochsner and after-work appointments available, **during a time that works best for them.**
- **The anticipated launch date for this service is April 19.** Information will be communicated through all LDOE channels including our website in the coming weeks.

Introducing Ochsner Anywhere Care Scheduled Online Therapy Visits

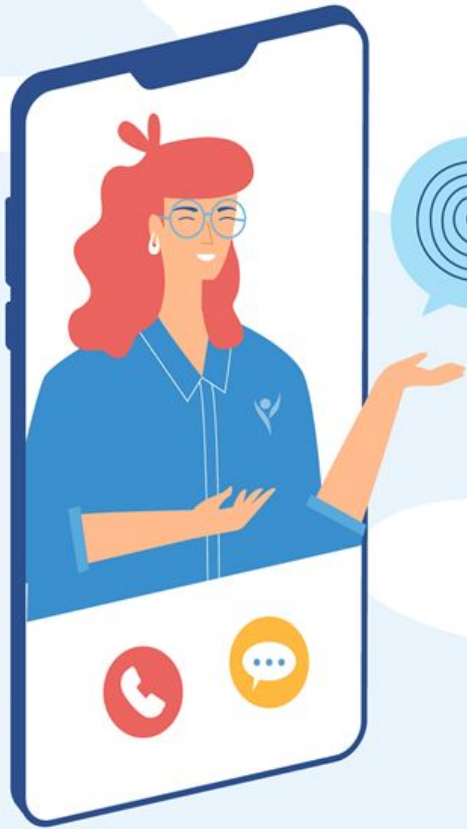
Same Day | Same Week | After Hours Sessions

Browse over 50 Therapist profiles to pick the right provider for you!
Appointments until 9pm weekdays and weekend coverage make it perfect for our educator population!

Continue your therapy sessions with the same provider!

Smartphone | Tablet | Computer

LA Department of Education Branded Experience





Our Therapists provide care for

Anxiety
Social Anxiety
Depression
Stress Management
LBGTQ Counseling
Brevement/Grief
OCD
PTSD/Trauma
Couples Therapy
Panic Attacks
Insomnia
Life Transitions
And More

4 Free
Online Therapy
Visits

To all
166,000+ Employees

