



Virtual Disaster Resource Info Sessions

Agenda



- Believe to Achieve
- Office of Operations
 - Summer Food Banks
 - The Feeding Network
- Office of Teaching and Learning
 - Emergency Broadband
 - Summer Learning Programs
 - GEERS Funding
 - CCAP
 - TIKES Early Childhood Mental Health Consultation Program
- Equity, Inclusion, and Opportunities
 - Mental Health Supports
- Office of Career and College Readiness
 - ACT Now

Believe to Achieve

The Department recently released [*Believe to Achieve: Educational Priorities*](#). This priorities plan serves as the Department's roadmap to improving outcomes for all Louisiana children.

Believe to Achieve includes the Department's new belief statements, state data to help track progress toward Louisiana's six critical goals, and the new priorities that will direct the LDOE's efforts as they work toward achieving the critical goals. Each priority outlines focus areas for the key actions and initiatives.

ACCESS

Believe to Achieve



Office of Operations



Summer Feeding Program

The [Summer Food Service Program \(SFSP\)](#) is a federally-funded, state-administered program. SFSP reimburses program operators who serve free healthy meals and snacks to children and teens in low-income areas.

During disasters, such as with COVID-19, the Summer Food Service Program may be an option for you to support the nutritional needs of children in your community.

There are many [SFSP Innovative Strategies | USDA-FNS](#) that may be used to ensure the SFSP is available to children in your community.

For more information please refer to the [SFSP checklist](#) to guide you through the process and you may also contact us at childnutritionprograms@la.gov or 225-342-9661.

The Feeding Network

Food insecurity is a major issue for some families. The Department is working with Feeding Louisiana to help address this need.

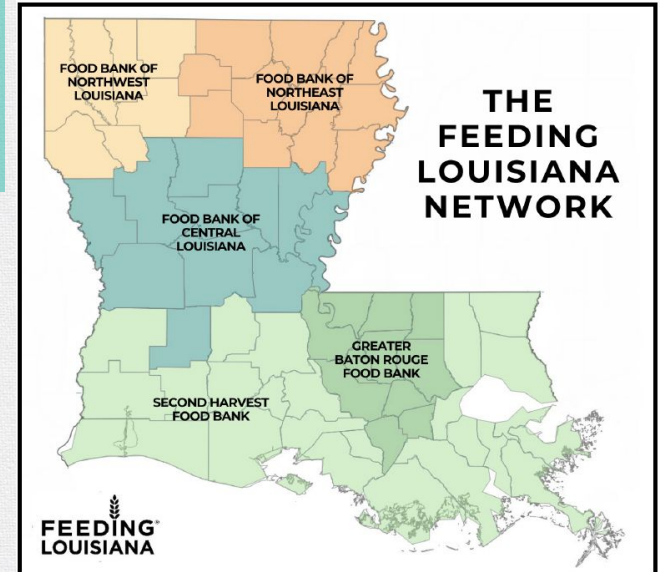
Second Harvest Food Bank - New Orleans - 504-729-2849;
Lafayette & Lake Charles - 337-408-2468

Food Bank Northeast Louisiana - Monroe - 318-322-3567

Greater Baton Rouge Food Bank - Baton Rouge -
225-359-9940

Food Bank of Northwest Louisiana - Shreveport -
318-675-2400 X 100

Food Bank of Central Louisiana - Alexandria -
318-445-2773 X 203



Visit www.feedinglouisiana.org/get-help
to find a nearby food bank.

Office of Teaching and Learning



Emergency Broadband Benefit for Families

The Federal Communications Commission (FCC) has launched an [Emergency Broadband Benefit Program](#) to assist eligible households or school systems in paying for home internet services during the pandemic.

The Emergency Broadband Benefit provides a single discount of up to \$50 per month toward broadband service being provided to eligible households and up to \$75 per month for households on Tribal lands. Eligible households can also receive a one-time discount of up to \$100 to purchase a laptop, desktop computer, or tablet from participating providers if they contribute \$10-\$50 toward the purchase price. In cases where the school system is purchasing home internet services for an eligible student, the school system can utilize the EBB discount to help defray the cost of service.

Households of students who currently attend a school that participated in the Community Eligibility Program (CEP) in 2019-2020 or 2020-2021 qualify for this discount. Additionally households of students who attend a school that participates in the National School Lunch Program (NSLP) and are receiving free or reduced-price meals also qualify. To assist families in determining if they qualify for the EBB program based on NSLP and CEP participation, the Department will be launching an eligibility and information [document](#) and providing updates as they are released by the FCC.

Summer Learning Programs

Summer learning programs (SLPs) are designed to provide students with additional opportunities for learning and growing during the summer months. Systems should strive to create opportunities for all students to access a summer learning program.

To support school systems in providing summer learning programs for incoming K-8 students, [guidance](#) was released that includes:

- Structure and elements of a summer program
- Resources for implementing elements
- Staffing and scheduling considerations
- Sample schedules
- Checklists for action steps during the spring and summer
- Funding information

Governor's Emergency Education Relief Fund

Through the Governor's Emergency Education Relief (GEER) Fund, all public and private schools and students will be provided free access to Edgenuity's online Social Emotional Learning (SEL) Purpose Prep content library and curriculum which includes:

- Character & Leadership Development
- College & Career Readiness
- Mental Health & Wellness
- Personal Development
- Social & Emotional Success
- Unlock Your Purpose

School systems and schools can sign-up to participate in this program.

Please contact edtech@la.gov with questions.

Child Care Assistance Program

Families who are experiencing homelessness by lacking a fixed, regular, and adequate nighttime residence may qualify for Child Care Assistance Program (CCAP) for up to 90 days without evidence of employment and training activity requirements.

[Apply online](#) or by paper linked below.

English [CCAP Application](#)

Spanish [CCAP Application](#)

Vietnamese [CCAP Application](#)

Any questions concerning CCAP can be addressed by contacting the Louisiana Department of Education at 1-877-453-2721 or emailing LDEccap@la.gov.

→→→ CHILD CARE ASSISTANCE APPLICATION PROCESS ←←←

1. Determine if you are eligible for child care assistance.
2. Are you responsible for paying child care costs for a child under 13 or a child under 18 with a disability who lives with you?
3. Is every adult in your household:
 - Working at least 20 hours a week **OR**
 - Attending an accredited school or a training program as a full-time student **OR**
 - Attending an accredited school or a training program at least 20 hours a week **OR**
 - Actively seeking work **OR**
 - Participating in a transitional living program **OR**
 - Receiving disability income **OR**
 - Experiencing homelessness?
4. Is your household's total monthly gross earned and unearned income less than the amount listed below for your household size?
(gross income refers to income before any deductions from the paycheck)

2 PERSONS \$2,927	3 PERSONS \$3,616	4 PERSONS \$4,304	5 PERSONS \$4,993	6 PERSONS \$5,682	7 PERSONS \$5,811	8 PERSONS \$5,940	9 PERSONS \$6,069
-----------------------------	-----------------------------	-----------------------------	-----------------------------	-----------------------------	-----------------------------	-----------------------------	-----------------------------

If you answered YES to all of the above questions, you may be eligible for child care assistance. * Limits are Subject to change

CATEGORICALLY ELIGIBLE:

Is your child a participant in the Early Head Start Childcare Partnership, have an IEP or IFSP, Homeless, or STEP/TANF recipient?



TIKES Early Childhood Mental Health Consultation Program

Tulane Infant & Early Childhood Consultation Supports and Services (TIKES) is a partnership between the Louisiana Department of Education, Tulane University, and local nonprofits throughout the State to provide **FREE** mental health consultation across Louisiana.

TIKES mental health consultants are licensed mental health professionals who have been trained in infant and early childhood mental health.

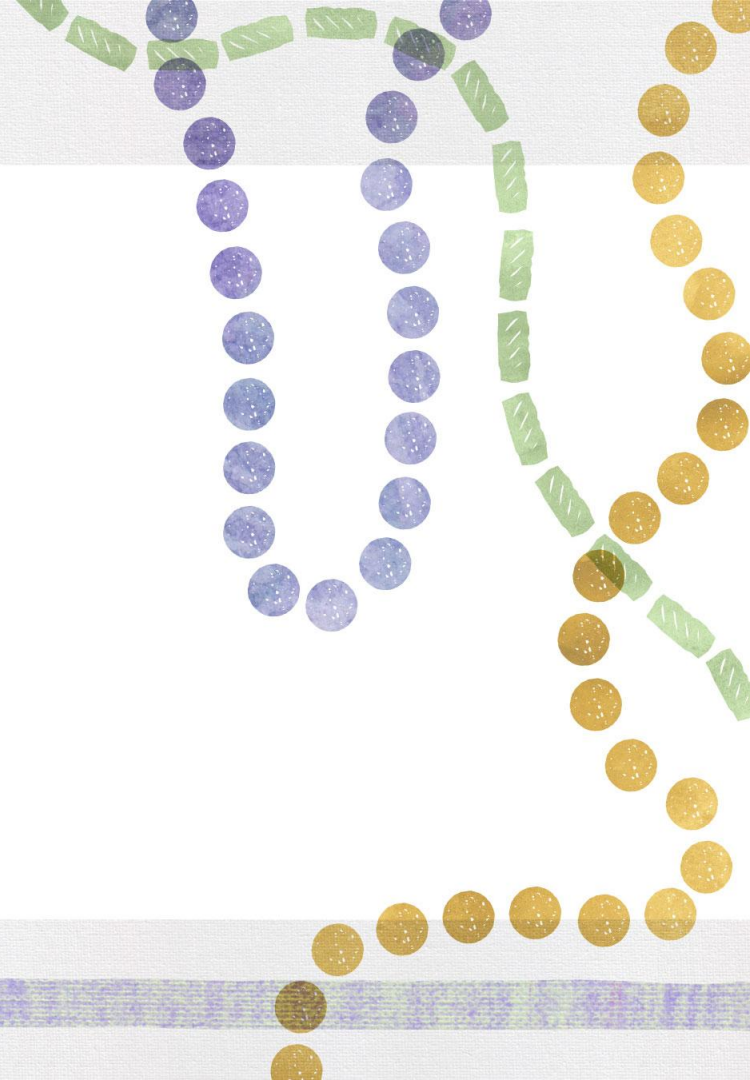
The TIKES Tele-MHC line is available to anyone caring for young children. They would receive basic support and referrals to community agencies where they can receive more in-depth support and/or treatment.

TIKES consultants are available to collaborate with community agencies to provide professional seminars for families on topics related to the social and emotional health of young children. Topics could include: sleep hygiene, conscious discipline, maintaining a home schedule, and more!

To make an appointment for a teleMHC session or connect with TIKES go to:

<https://tinyurl.com/TulaneTIKES>

Office of Equity, Inclusion, and Opportunities



LDOE + Ochsner Partnership: Educator Mental Health and Well-Being

- Ensuring the health, safety, and mental well-being of the school support staff that have been serving on the front lines for the good of Louisiana students is a top priority for the Department.
- The LDOE has recently finalized a partnership with Ochsner Medical Center to offer **free teletherapy** to all educators and school support staff across the state.
- The Department has committed \$1M to this project to ensure that we can take care of those that are taking care of our students. **Educators and support staff will have access to four, completely free and 100% confidential counseling sessions with licensed mental health professionals.**

LDOE + Ochsner Partnership: Educator Mental Health and Well-Being

How will this work?

- Ochsner has built a custom, online platform and hired additional mental health professionals to staff this initiative specifically with the needs of our teachers and support staff in mind.
- Using a laptop, tablet, or smartphone, educators will be able to schedule and **participate in virtual teletherapy from anywhere** and, due to the increased staffing of Ochsner and after-work appointments available, **during a time that works best for them.**
- **The anticipated launch date for this service is April 19.** Information will be communicated through all LDOE channels including our website in the coming weeks.



Office of Career and College Readiness



Believe to Achieve: Louisiana ACT[®] NOW

The [Louisiana ACT[®] NOW](#) program provides funding to purchase pre-billed ACT test vouchers for eligible students in grades 12 and 10. Vouchers purchased from ACT must be used for one of three administrations as outlined below.

Test Date	Registration Deadline
April 17	March 12
June 12	May 7
July 17	June 18

The cost of vouchers for ACT without writing is \$55 per student, and there will be no refund for unused vouchers.

Believe to Achieve: Louisiana ACT[®] NOW

Students in grade 12 are eligible for an ACT[®] voucher if all of these apply:

- The student has not earned an ACT[®] score that qualifies them for college admissions or TOPS, or who are seeking an opportunity to enhance their current level of TOPS Tech, TOPS Opportunity, TOPS Performance, TOPS Honors, or to seek other merit-based scholarship opportunities.
- The student is on target to complete all coursework necessary to graduate no later than August 31, 2021.
- The student is on target to meet all state assessment graduation requirements no later than August 31, 2021.

Students in grade 10 are eligible for an ACT[®] voucher if:

- The student requires an ACT[®] score to qualify for enrollment in a Dual Enrollment program or other academic program(s) that require an ACT[®] score.



Thank you!

Please contact LDOEcommunications@la.gov with questions.

