



Teacher Leader Collaboration Event Agenda: Harvey January 2017

Location:

Jefferson Parish School Board Building
501 Manhattan Blvd.
Harvey, LA 70058

Parking:

Park in the lot in front of building. Parking is free.

Agenda

12:30 p.m. – 1:00 p.m.	Sign-in (<i>Board Room</i>)
1:00 p.m. – 2:20 p.m.	Session Rotation 1
2:30 p.m. – 3:50 p.m.	Session Rotation 2

Preparation

All participants should **bring a fully charged laptop computer** with them to the event and **download session materials in advance.**

Food and Hotels

Food will *not* be provided at the event. Click here for a list of [Harvey area hotel and food options.](#)

Contact Us

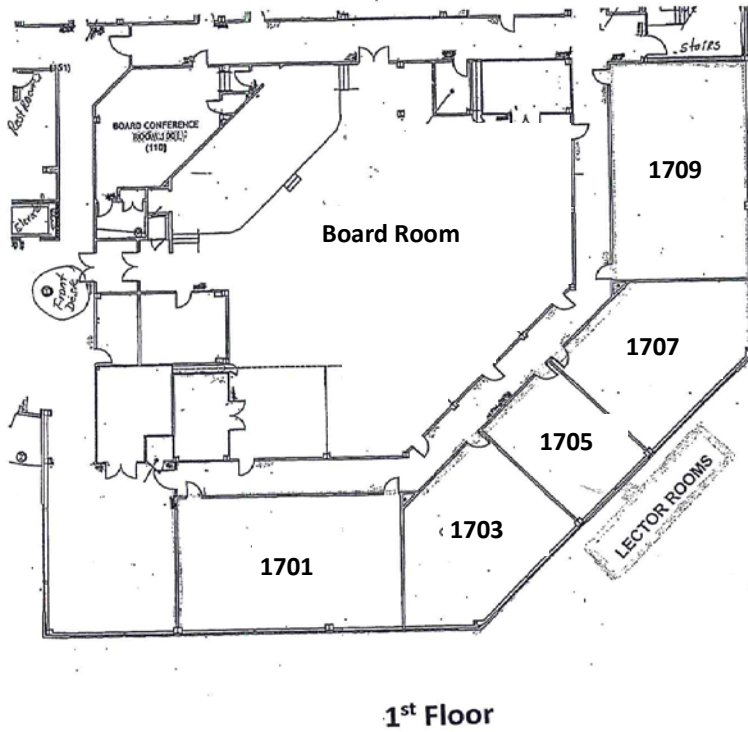
Please contact your Network support team or DistrictSupport@la.gov with questions about this event.

Sessions

Teacher Leaders will have the opportunity to choose **two** sessions that fit their needs and interests. Teacher Leaders will *not* register for specific sessions in advance. All sessions are filled on a first come, first served basis. All information in the table below is subject to change.

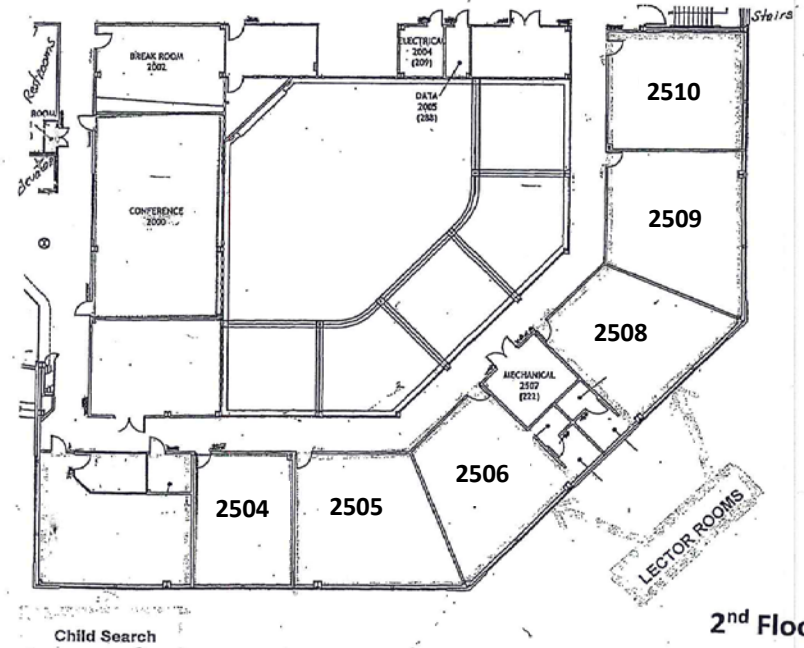
Content Area	Grades	Session Title	Session Description	Rotation(s)	Room
ELA	3-12	Using PLCs to Prepare to Effectively Teach Guidebooks 2.0	<p>Leading PLCs is a great way for Teacher Leaders to expand their impact and positively influence the instruction of peers. Researchers have called PLCs "the most powerful professional development and change strategy available" (Huffman & Hipp, 2003), but educators aren't always sure how to make the most of them. This session will set up Teacher Leaders to:</p> <ul style="list-style-type: none"> Describe the characteristics of effective PLCs Practice using PLCs to effectively internalize, prepare to teach, and reflect on Guidebook 2.0 lessons Create a plan for implementing curriculum-based PLCs in their own schools using lessons learned from other districts' approaches. 	1, 2	1709
Library, ELA	K-12	This is Not Your Mama's Library!	<p>Does your school have a 21st century library? The focus of school library programs has shifted from an emphasis on resources to an emphasis on creating a community of lifelong learners and creators. In this session, librarians from the Louisiana Association of School Libraries will present the updated library guidelines to support you in developing a course of action to ensure your school library is an effective school library program that positively impacts student learning.</p>	1, 2	2509
Math	K-12	Using PLCs to Prepare to Effectively Teach Eureka	<p>Leading PLCs is a great way for Teacher Leaders to expand their impact and positively influence the instruction of peers. Researchers have called PLCs "the most powerful professional development and change strategy available" (Huffman & Hipp, 2003), but educators aren't always sure how to make the most of them. This session will set up Teacher Leaders to:</p> <ul style="list-style-type: none"> Describe the characteristics of effective PLCs Practice using PLCs to effectively internalize, prepare to teach, and reflect on Eureka lessons Create a plan for implementing curriculum-based PLCs in their own schools using lessons learned from other districts' approaches. 	1, 2	1701

Content Area	Grades	Session Title	Session Description	Rotation(s)	Room
Math	3-12	LDOE Math Tools	Join this session to learn more about the purpose and intended use of each tool on the Math Planning Page on the LDOE website. We will review a number of tools to help math teachers, coaches, and administrators ensure math instruction is focused, rigorous, and coherent.	1, 2	1703
Science	3-12	Science Standards - Overview of Drafts and Implementation Plan	In March, the Science Standards Review Committee will submit a draft of the proposed Louisiana Student Standards for Science to BESE for approval. For those eager to dig in early, join this session to learn about the underlying framework of the drafts of the standards and plans for implementation support.	1, 2	Board Room
Social Studies	K-12	Social Studies Shifts	Building on content and claims, participants will explore the three main shifts in social studies instruction: <ol style="list-style-type: none"> 1. Use sources regularly to learn content 2. Make connections among people, events, and ideas across time and place 3. Express informed opinions supported by evidence from sources and outside knowledge. <p>By reviewing sources in the updated Social Studies Scope and Sequence exemplar, discussing a PLC scenario, and analyzing a class discussion, participants will identify clear next steps in implementing the social studies instructional shifts.</p>	1, 2	2505
ELL and Special Education	K-12	The Louisiana Connectors for ELL and Students with Significant Cognitive Disabilities	Participants will get an overview of the recently approved Louisiana Connectors for English Language Learners and students with significant cognitive disabilities. Participants will learn about plans for PD, guidance, and resources to support implementation of the Louisiana Connectors at the start of the 2017-2018 school year.	1	1707



1st Floor

Jefferson Parish School Board Office



2nd Floor