



## Teacher Leader Collaboration Event Agenda: Harvey Tuesday, September 19, 2017

[Teacher Leaders Collaboration Events](#) provide classroom teachers across Louisiana with access to high-quality tools, resources and professional development designed to help them achieve their goals with their students. Sessions focus on a variety of content-specific tools, information and instructional strategies.

### **Location:**

Jefferson Parish School Board Building  
501 Manhattan Blvd.  
Harvey, LA 70058

### **Parking:**

Park in the lot in front of building. Parking is free.

### **Agenda**

12:00 p.m. - 12:30 p.m.	Sign-in ( <b>Board Room</b> )
12:30 p.m. - 1:30 p.m.	Session Rotation 1
1:40 p.m. - 2:40 p.m.	Session Rotation 2
2:50 p.m. - 3:50 p.m.	Session Rotation 3

### **Preparation**

All participants should **bring a fully charged laptop computer** with them to the event and [download session materials in advance](#).

### **Food and Hotels**

Food will *not* be provided at the event. Click here for a list of [Harvey area hotel and food options](#).

### **Contact Us**

Please contact your Network support team or [LouisianaTeacherLeaders@la.gov](mailto:LouisianaTeacherLeaders@la.gov) with questions about this event.

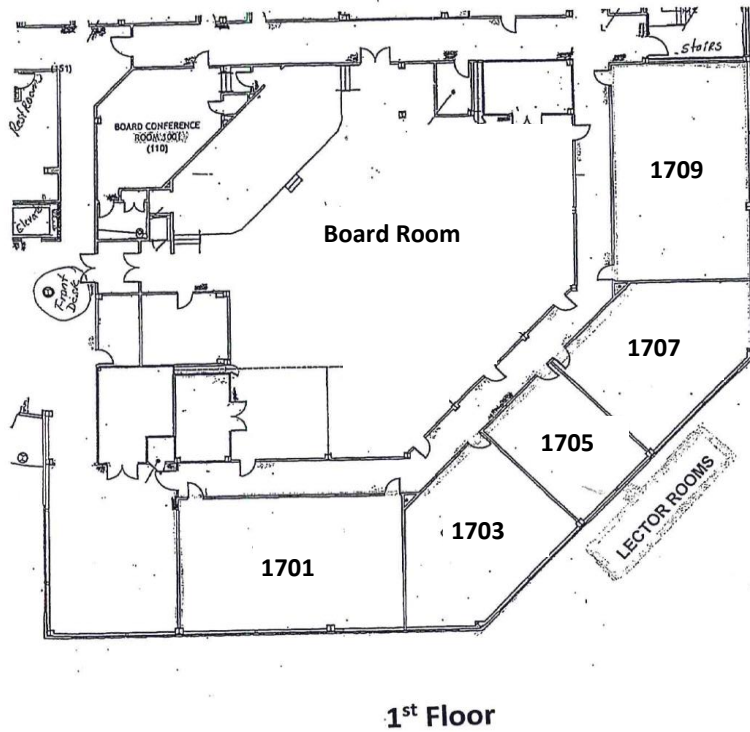
**Sessions**

Teacher Leaders will have the opportunity to choose **three** sessions that fit their needs and interests. Teacher Leaders will *not* register for specific sessions in advance. All sessions are filled on a first come, first served basis. All information in the table below is subject to change.

Content Area	Grades	Session Title	Session Description	Rotation(s)	Room
ALL	K-12	LEAP 360: Interim	In this session, participants will leave with an understanding of the content, pacing, and reporting features of LEAP 360 Interim Assessment. Session will also include information on how to connect the LEAP 360 Assessment with ELA and Math instructional resources provided by the LDOE.	1, 2, 3	Room 1709
ELA	PreK-3	PreK-3 Guidebook for Site and System Leaders	In this session, participants will examine the <a href="#">PreK-3 Guidebook</a> . Participants will understand the five strategies that promote quality and continuity of practices across the PreK-3 continuum and help children acquire a solid foundation for later school success.	1, 2	Room 1703
ELA	3-10	The Missing Link: From Guidebooks 2.0 to Summative Assessment	In this session, participants will explore the ELA Guidebook assessment approach and the connection to LEAP 2025 assessments. Participants will leave the session confident in the knowledge and skills needed to answer each LEAP 2025 item type and how the ELA Guidebooks build that knowledge and skill.	1, 2, 3	Rotation 1: Board Room Rotation 2 and 3: Room 2509

Content Area	Grades	Session Title	Session Description	Rotation(s)	Room
<b>Social Studies</b>	3-8	Social Studies Scope and Sequence Updates	In this session, participants will review the shifts from a teacher's perspective, consider what needs to be accomplished to align instruction to the shifts, and experience new resources from the LDOE that will support teachers in these efforts. Participants will identify how the updated <a href="#">scope and sequence documents</a> support the necessary shifts in the classroom, and will leave ready to align instruction to the shifts using these resources.	2-3 (2 rotations combined)	Board Room
<b>Math</b>	K-12	Eureka Remediation Tools	This session will explore and challenge traditional mindsets around remediation in the mathematics classroom, then introduce the new <a href="#">Eureka Remediation Tools</a> as resources to combat common misconceptions about remediation. Participants will practice analyzing sample student work to diagnose gaps in understanding and skills and create a specific plan to respond.	1, 2, 3	Room 2505
<b>Science</b>	K-12	Science Scope and Sequence Documents	In this session, participants will explore the new <a href="#">science scope and sequence documents</a> and phenomenon-based instruction. Participants will understand how phenomena are used to engage students in learning and how to adjust their instructional practices to align with the new Louisiana Students Standards for Science.	1, 2	Room 1701
<b>Special Education</b>	K-12	LATI Centers – Resources and Supports Available	In this session, participants will learn about the LATI center including the services they provide and how to incorporate assistive technology to support the diverse needs of learners.	2, 3	Room 2508

Content Area	Grades	Session Title	Session Description	Rotation(s)	Room
Special Education	K-12	Alternative Assessment Guide for LEAP Connect	In this session, participants will walk through the components of the LEAP Connect. Presenters will provide an overview on how the LEAP Connect ties back to the Louisiana Connectors and will provide strategies to help form instructional decisions and plan with the LEAP assessment in mind.	1, 3	Rotation 1: Room 2509 Rotation 3: Room 1707
ELL	K-12	ELPT Assessment Guides	In this session, participants will walk through the components of the ELPT. Presenters will provide an overview on how the ELPT ties back to the Louisiana Connectors for ELS and will provide strategies to help form instructional decisions and plan with the assessment in mind.	1, 3	Rotation 1: Room 2508 Rotation 2: Room 1703
Special Education	K-12	Developing a High Quality Preparation Program For Teachers of Students With Significant Disabilities	The University of New Orleans is designing a preparation program for teachers of students with significant disabilities. During this session, participants will have the opportunity to share feedback with UNO regarding the development of this program. This is an exciting opportunity to inform the design of a high quality and much needed program.	1, 2	Room 1707



**Jefferson Parish School Board Office**

