



# SCHOOL SAFETY SUMMIT

JUNE 15, 2023



**MOTOROLA**  
SOLUTIONS

RAISING CANE'S RIVER CENTER | BATON ROUGE, LA

# Louisiana Department of Public Safety & Corrections Presenters



**Kelsey Osman**  
Career & Technical Education Director



**Andrea Buttross**  
Deputy Assistant Secretary  
Office of Adult Services, Education &  
Reentry



# CTE/IBC Program Landscape

- Education Programs in 33 of 64 Parishes in LA
- Serving over 5000 students annually
  - 8 State; 10 Regional Reentry Centers; 11 Local Jails; Day Reporting Centers
    - CTE/IBC Enrollments: 5244
    - CTE/IBC Completions: 2959
- Graduates/Completers 5 Years: ~10,000

# CTE/IBC Program Landscape

- 135 Separate, Stackable Credentials
  - 18 Agencies
  - 42 Training/Craft Areas
    - Certified Inmate Instructors
- Post-Secondary Institutions:
  - LCTCS: Fletcher, NTCC, CLTCC, LaDelta, SLCC, BPCC
- Funding: Carl Perkins, JRI, 2<sup>nd</sup> Chance Pell, Wagner Peyser (LWC)
  - Expansion: Pell Reinstatement; Louisiana Rehabilitative Services (LRS); Local Workforce Boards

# Industry Based Certifications





# Recognizing Program Potential

- Reinventing the Wheel is not necessary.
- Use readily available services, resources, and staff.



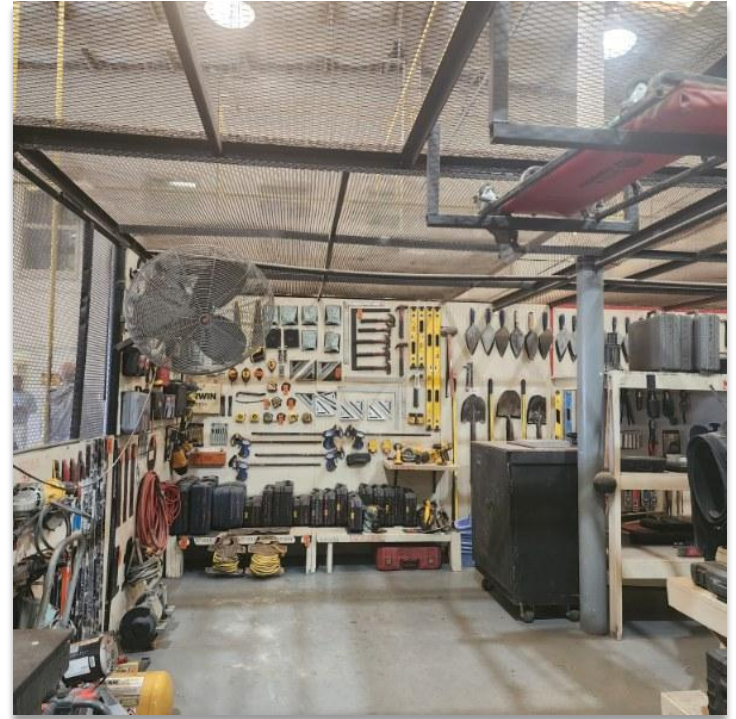
DO NOT REINVENT  
THE WHEEL

stand on top of it and  
take pictures as you  
do something original



# Focus on Safety

- **Tool Control**
  - Labeling
  - Inventory
  - Check In/Out System





# Focus on Safety: Tool Control



Facility Name - Program

Tool Inventory

Area	#	Description	Pieces	Loc. Desc.	Fund/FY
Auto	1	Tire Changer	1	Tool Closet	JRI/22

## Tool Checkout Form

Location \_\_\_\_\_

TOOL #	DESCRIPTION	CHECKED OUT TO	CHECKED OUT BY	DATE/TIME OUT	DATE/TIME IN

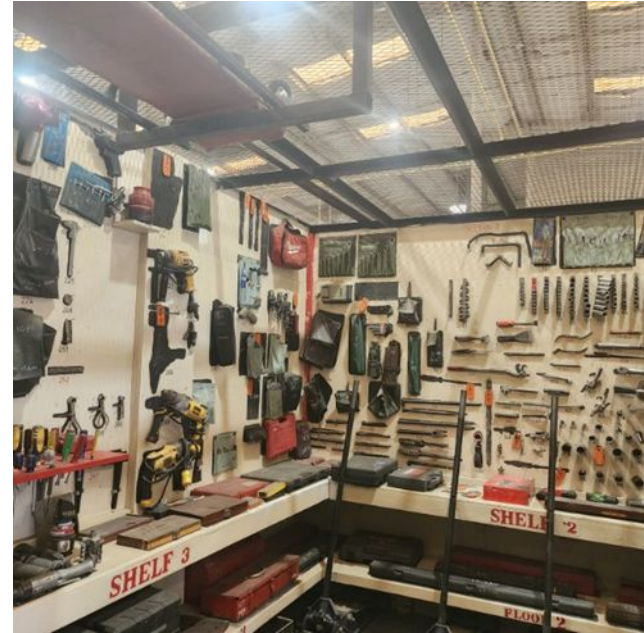
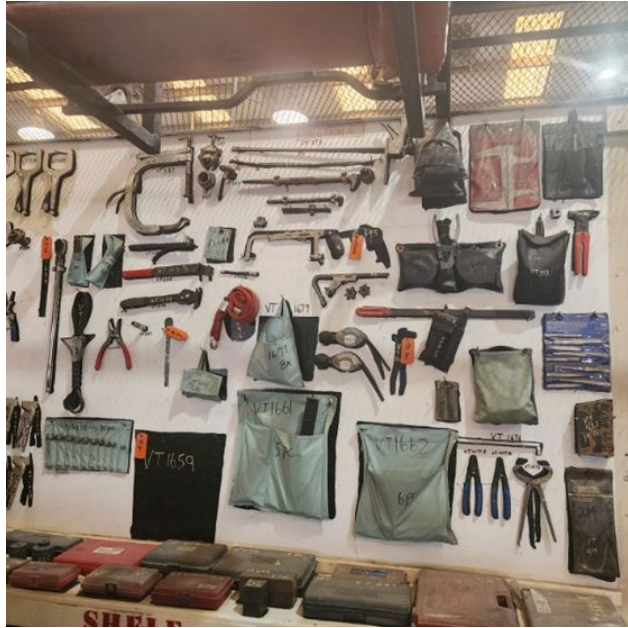
## Tool Check-out/Check-in

Location \_\_\_\_\_

DESCRIPTION/TOOL #	CHECKED OUT TO/BY	DATE/TIME	CHECKED IN/BY	DATE/TIME

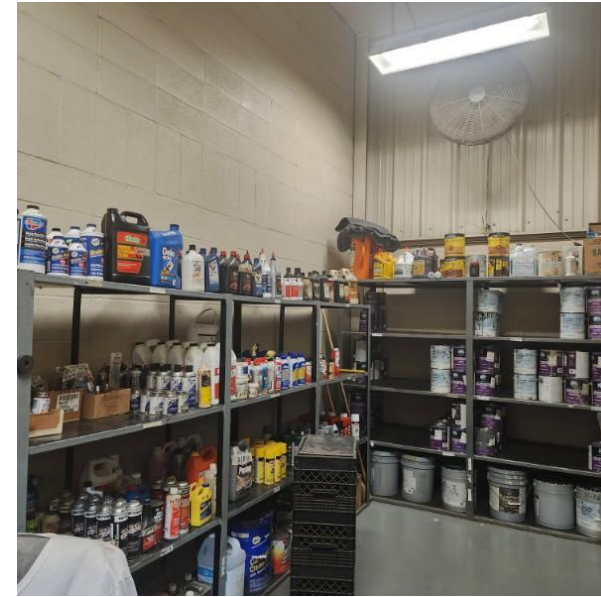
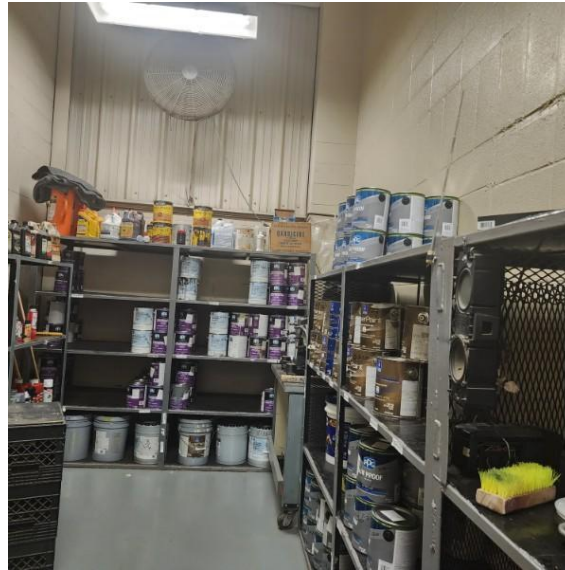


# Focus on Safety: Tool Control





# Focus on Safety: Flammable, Toxic, Caustic/Safety Data Sheets





# Focus on Safety: Flammable, Toxic, Caustic Materials

Facility Name - Program  
Flammable, Toxic, Caustic Inventory

Location: \_\_\_\_\_ Substance Identification: \_\_\_\_\_  
(ex. Paint, Gasoline)

Date Received: \_\_\_\_\_ Container Size: \_\_\_\_\_  
(ex. Gallon, Quart)

Date	Amount Received	Amount Issued	Issued to	Amount Returned	Total Amount on Hand	Initial
5/23/2022	3 full	1 full	Tom Jones	1/2	2 1/2	

## MATERIAL SAFETY DATA SHEET

Radiator Specialty Company

1900 WILKINSON BLVD. CHARLOTTE, NC 28208 (704) 377-6555

POISON INFORMATION & EMERGENCY: 303-623-5716

### MATERIAL SAFETY DATA SHEET

May be used to comply with OSHA's Hazard Communication Standard 29 CFR 1910.1200. Standard must be consulted for specific requirements.

### US DEPARTMENT OF LABOR

Occupational Safety and Health Administration.  
(Non-Mandatory Form) Form Approved OMB No. 1218-0072

### SECTION I GENERAL INFORMATION

PRODUCT NAME AIR BRAKE SYSTEM ANTI FREEZE AND RUST GUARD  
PART NUMBER M28 -32, -34, -49

NOTE: Blank spaces are not permitted. If any item is not applicable or no information is available, the space must be marked to indicate that.

### SECTION II HAZARDOUS INGREDIENTS/IDENTITY INFORMATION

COMPONENT	WT%	C.A.S. NO.	TLV (ACGIH-X-----OSHA-----)
Methyl Alcohol	>99	67-56-1	200 ppm (Air)

CONTAINS AVERSIVE AGENT, DENATONIUM BENZOATE, CAS 3734-33-6.

### Comments:

Components not identified are non-hazardous according to 29 CFR 1910.1200

### SECTION III PHYSICAL/CHEMICAL CHARACTERISTICS

Specific Gravity (H <sub>2</sub> O=1)	0.793	pH	NDA
Solubility in Water	Completely	Solubility in Solvent	Alcohol
Flash Point (Method) - F <sup>3</sup>	54°F (TCC)	% Volatiles By Wt.	99.8%
Melting Point - F <sup>3</sup>	N/A	Boiling Point - F <sup>3</sup>	147°F.
Vapor Pressure (mmHg)	NDA	Vapor Density (Air=1)	>1
Evaporation Rate (Butyl Acetate=1)	>2		
Appearance and Odor	Clear, blue liquid with alcoholic/ammonia odor.		

### SECTION IV FIRE AND EXPLOSION HAZARD DATA

EXTINGUISHING MEDIA:	Caution: FLAMMABLE!				
Water Fog	X	Foam	X	Dry Chemical	X

SPECIAL FIRE FIGHTING PROCEDURES. Wear self-contained, positive pressure breathing apparatus and protective clothes.

UNUSUAL FIRE AND EXPLOSION HAZARDS Methanol should be considered a moderate explosion hazard, and dangerous fire hazard

# Focus on Safety: Signage





# Focus on Safety



## OSHA HAZARD COMMUNICATION STANDARD AND GHS

**SAFETY DATA SHEETS - MINIMUM REQUIREMENTS**

- Section 1. Identify the hazard and/or supplier, manufacturer or distributor name, address, phone number, emergency phone number, and contact person, website, or e-mail.
- Section 2. Identify the hazard(s) and include all hazard warnings for chemical, physical, health, and environmental.
- Section 3. Provide information on regulatory, including identification of chemical, physical, health, and environmental.
- Section 4. Provide information on regulatory, including identification of chemical, physical, health, and environmental.
- Section 5. Provide information on regulatory, including identification of chemical, physical, health, and environmental.
- Section 6. Provide information on regulatory, including identification of chemical, physical, health, and environmental.
- Section 7. Provide information on regulatory, including identification of chemical, physical, health, and environmental.
- Section 8. Provide information on regulatory, including identification of chemical, physical, health, and environmental.
- Section 9. Provide information on regulatory, including identification of chemical, physical, health, and environmental.
- Section 10. Provide information on regulatory, including identification of chemical, physical, health, and environmental.
- Section 11. Provide information on regulatory, including identification of chemical, physical, health, and environmental.
- Section 12. Provide information on regulatory, including identification of chemical, physical, health, and environmental.
- Section 13. Provide information on regulatory, including identification of chemical, physical, health, and environmental.
- Section 14. Provide information on regulatory, including identification of chemical, physical, health, and environmental.
- Section 15. Provide information on regulatory, including identification of chemical, physical, health, and environmental.
- Section 16. Provide information on regulatory, including identification of chemical, physical, health, and environmental.
- Section 17. Provide information on regulatory, including identification of chemical, physical, health, and environmental.
- Section 18. Provide information on regulatory, including identification of chemical, physical, health, and environmental.
- Section 19. Provide information on regulatory, including identification of chemical, physical, health, and environmental.
- Section 20. Provide information on regulatory, including identification of chemical, physical, health, and environmental.

**HAZARD PICTOGRAMS**

- Explosion (Explosive)
- Flame (Flammable)
- Gas cylinder (Gases under pressure)
- Corrosion (Corrosive)
- Skull and crossbones (Acute toxicity)
- Health (Health hazard)
- Environment (Environment)

**CHEMICAL LABEL MINIMUM REQUIREMENTS**

**Product Identifier:** This is the unique name or number used to identify a hazardous chemical. The name form of identifier must be used for the whole SDS and required company chemicals list for each chemical. Some limit - A word used to warn employees of a potential hazard and is not used in a label.

**Supplier Identification:** The name, address, and telephone number of the supplier.

**Hazard Statements:** Information describing the nature of the chemical hazard and the degree of the hazard. Example: Fatal if swallowed.

**Precautory Statements:** A phrase describing recommended measures to be taken to reduce or prevent adverse effects, including harm exposure to the hazardous chemical or equipment damage or handling hazard. Example: Airtight and non-flammable to reduce specific information about the hazard of a chemical.

**Supplemental Information:** Manufacturers, suppliers or distributors may choose to add supplementary information to the label when it provides human details and does not contradict or cast doubt on the words of the standardized hazard information.

**SAMPLE LABEL**

**PRECAUTIONARY STATEMENTS**

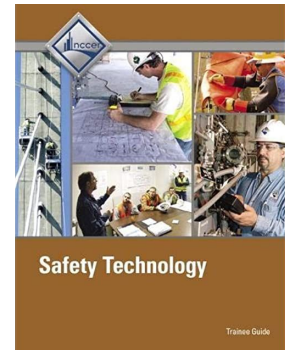
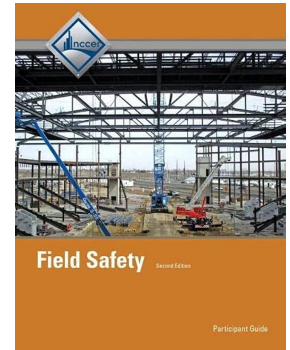
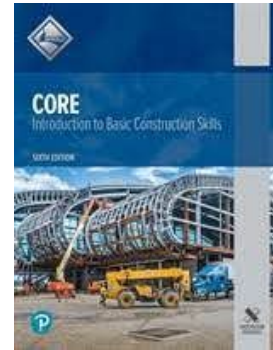
These are the types of Precautionary Statements used on labels:

- Prevention:** Statements meant to keep you from harm. Example: Wear protective gloves.
- Response:** Statements providing steps to take if you've been exposed to chemical hazard. Example: Immediately call a poison center or doctor/hospital.
- Storage:** Explains the safe way to store the chemical. Example: Keep container tightly closed.
- Disposal:** The preferred method to dispose of the chemical safely. Example: Dispose of contents/container in accordance with local regulations.

Believes

# Focus on Safety

- **NCCER Safety Program:**
  - CORE
  - Fall Protection
  - Field Safety
  - Safety Technology





# NCCER Safety Program

- **NCCER CORE:** Standardized curriculum which provides instruction in the basic processes of all construction crafts
  - Basic Safety (Construction Site Safety Orientation)
  - Introduction to Construction Math
  - Introduction to Hand Tools
  - Introduction to Power Tools
  - Introduction to Construction Drawings
  - Introduction to Basic Rigging
  - Basic Communication Skills
  - Basic Employability Skills
  - Introduction to Material Handling

# NCCER Safety Program

- **Fall Protection**

- Standardized curriculum which provides instruction to increase awareness of job site hazards and mitigate the risk of injury or death from these hazards.
- Learners are introduced to fundamental safety and hazard recognition concepts and the role of OSHA in regulating elevated work on the jobsite.



# NCCER Safety Program

- **Field Safety**

- Standardized curriculum covers the rules and safeguards needed to work safely on any job site, including such as hazard communication, electrical safety, and heavy equipment, forklift, and crane safety.
- Designed for any learner who will complete or oversee job tasks, whether they are craft professionals, crew leaders, safety supervisors or superintendents.

# NCCER Safety Program

- **Safety Technology**
  - Standardized curriculum provides instruction on how to implement and administer a company's safety program.
  - Designed for field managers, safety directors, safety committees, owner safety representatives and insurance/loss control representatives.



# Nonno's Restaurant – Shermond







**Questions?**