

## **While you're waiting....**

Complete a school snapshot for your school or a school in your district.

We will go over the results during the presentation!





# Med-E Ready

Emergency Response Planning *Simplified!*



# About Us

- *Code Ana* equips schools for medical emergencies. It is supported by the non-profit organization The Teal Schoolhouse.

**@CodeAnaUSA**

- *Dr. Hoyt* is a board-certified allergist & immunologist, internist, and pediatrician. She is the chief volunteer physician and chairman of the board of The Teal Schoolhouse (volunteer role).

**@HoytFoodAllergy**

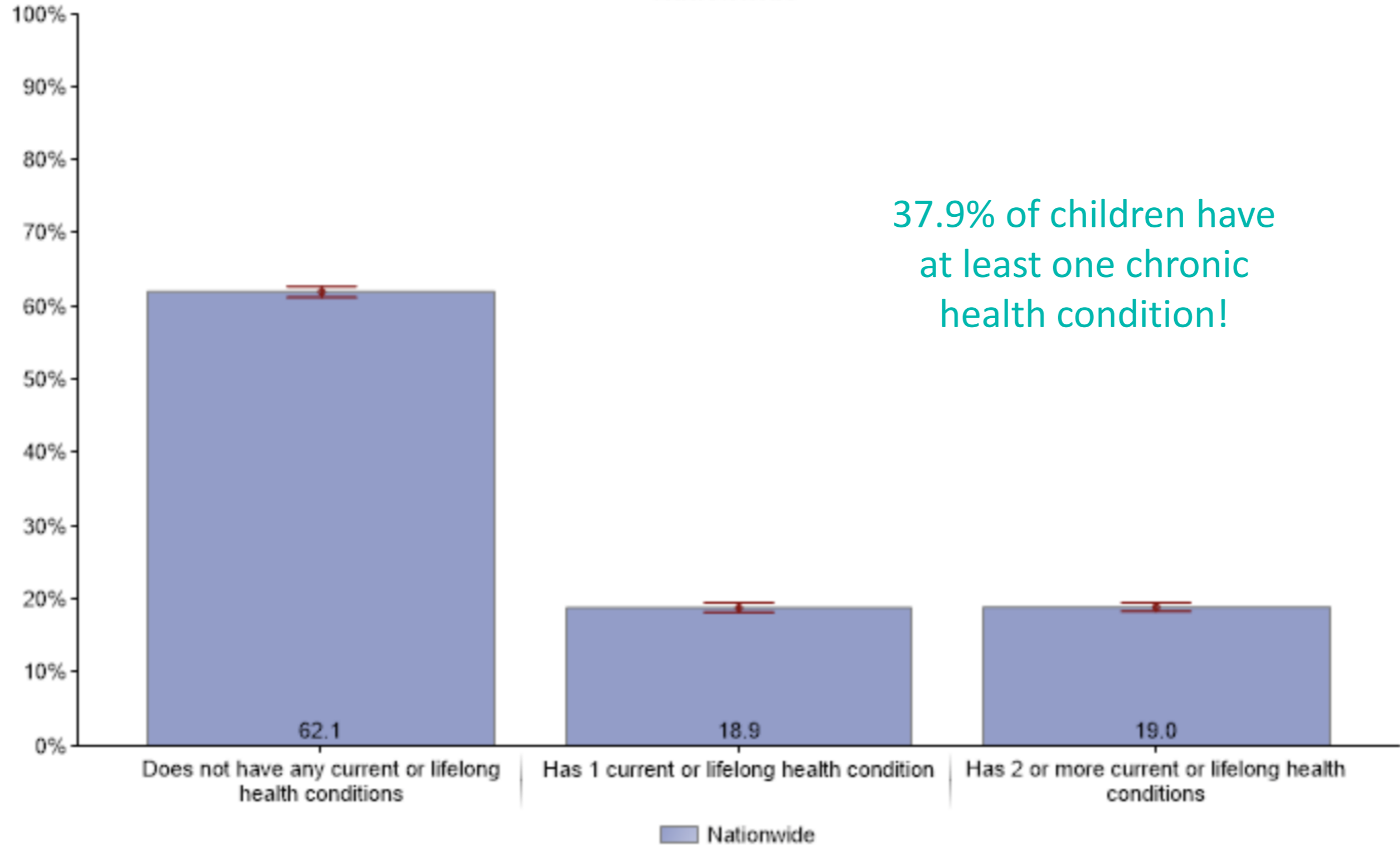


## After completing this workshop, you will be able to:

- Identify areas of improvement in your school's current emergency preparedness plans
- List the steps of creating a medical-emergency response plan that is:
  - Evidence-based
  - Unique to your school
  - Is built upon a team



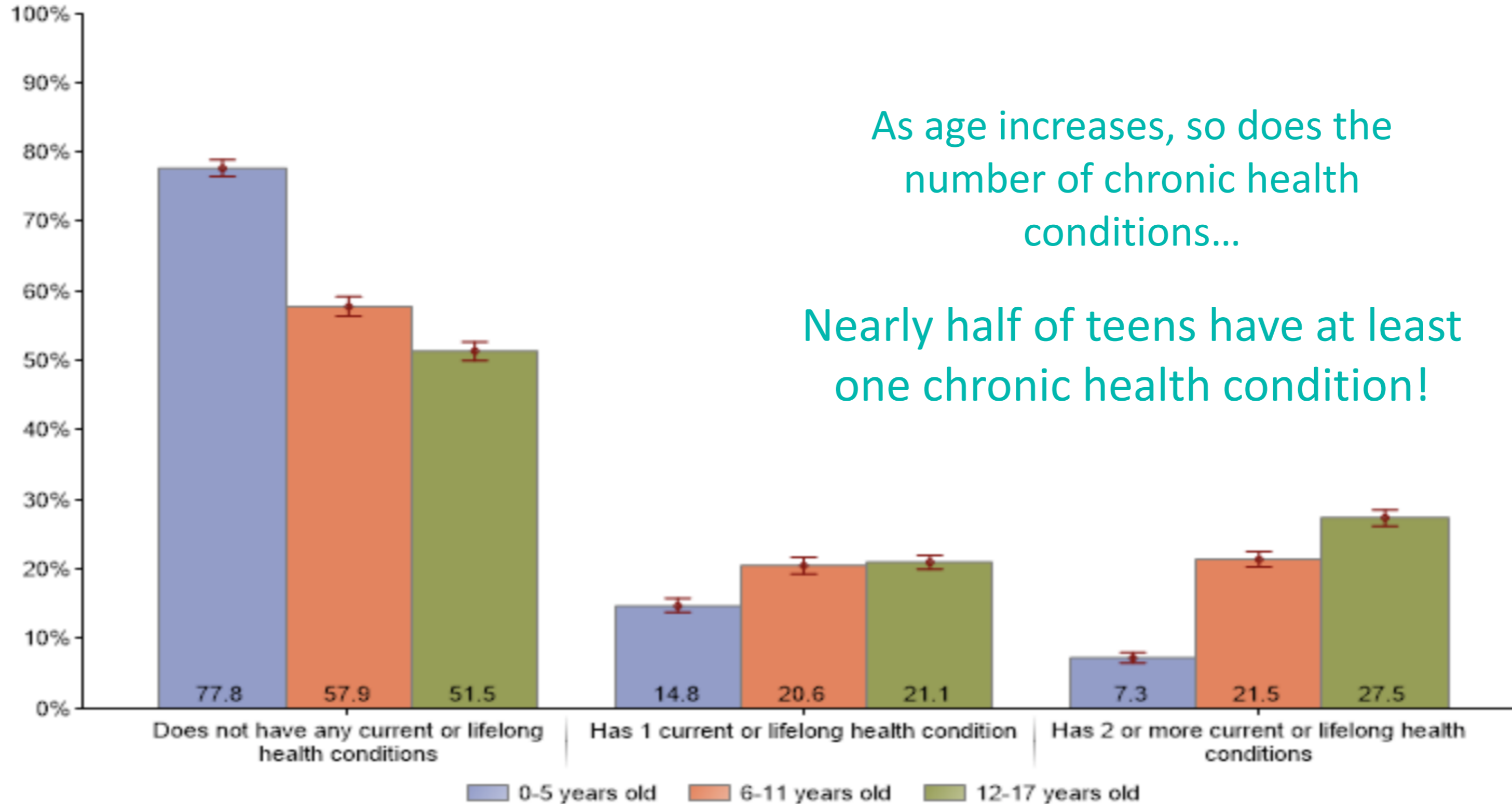
**Number of current or lifelong health conditions**  
Children age 0-17 years  
Nationwide



37.9% of children have at least one chronic health condition!



**Number of current or lifelong health conditions**  
Children age 0-17 years  
Nationwide



As age increases, so does the number of chronic health conditions...

Nearly half of teens have at least one chronic health condition!



# FEMA recommends schools have a “Public Health, Medical, and Mental Health Annex”

Considerations include:

- Staff roles in medical management, such as:
  - First aid
  - CPR
- Management, use, and location(s) of medical supplies



# American Academy of Pediatrics now recommends:

- Supplies for individual emergencies are needed on campus
- Medical emergency plans are practiced through drills
- Medical emergency plans for entire campus
- Staff should be trained for emergencies

American  
Academy of  
Pediatrics

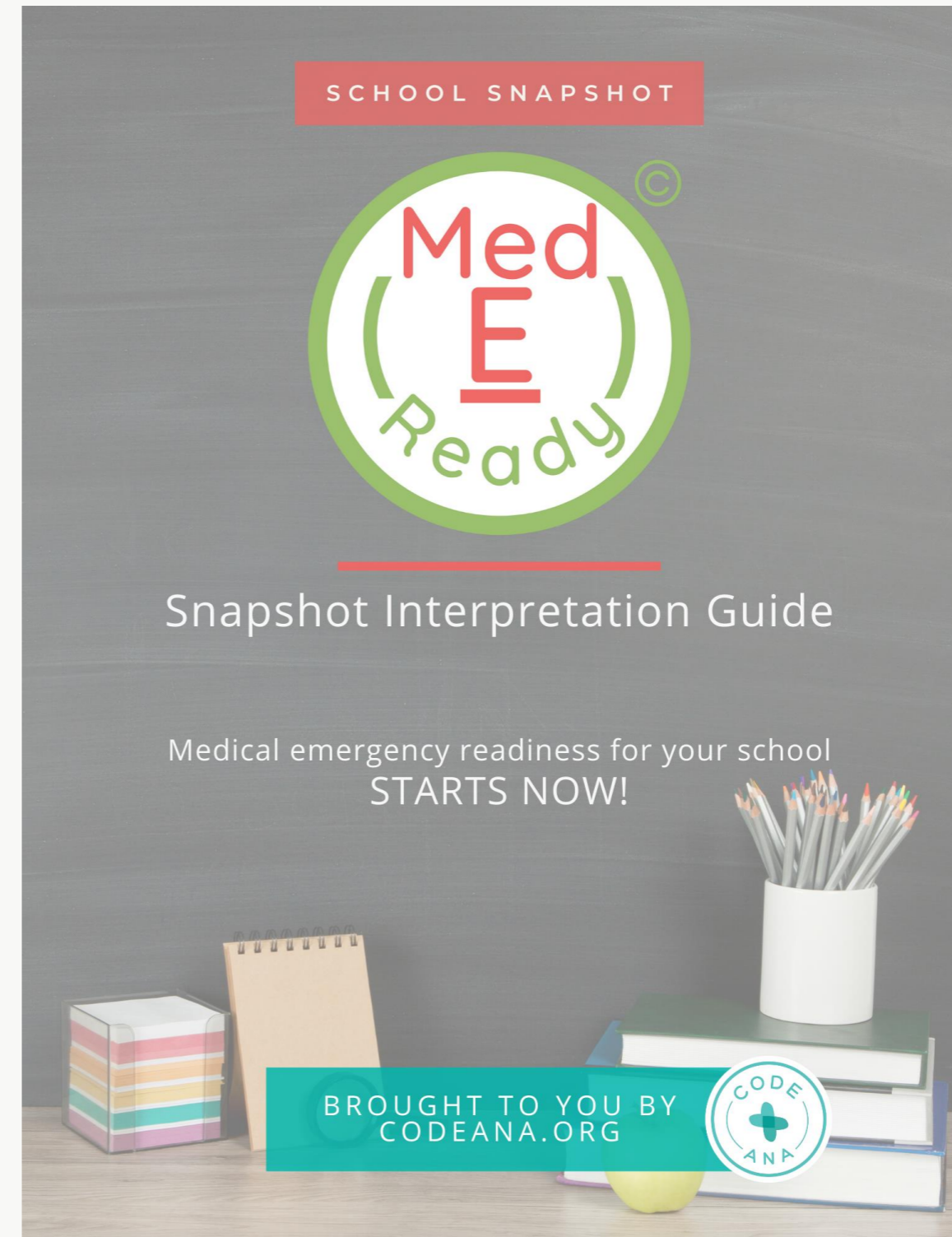




# Consider your school's current level of preparedness

## Five Core Questions

1. School nurse?
2. Which staff are trained?
3. What medications and devices are available?
4. Does your school have a response plan and team?
5. Does your school practice the plan?



# Medical Leadership

## Key Points:

- Nurses are critical
- Their presence at your school brings peace of mind to staff, students, and families

### MED-E READY SNAPSHOT

## **PART 1** MEDICAL LEADERSHIP AT SCHOOL

*Does your school have a nurse?*

- a. Yes - we have a full-time school nurse. (2 points)*
- b. Partial yes - we have a part-time school nurse. (1 point)*
- c. No, we have no school nurse. (0 points)*

### **YOUR SCORE:**

### **PLAN FOR SUCCESS.**

More children have chronic diseases than ever before, which is why each school should have at least one school nurse. Even though that is not always the case and may not be the case for your school, medical leadership does currently exist within your school. This may include a nurse, health teacher, administrator, coach - anyone who your school depends on for student health-related needs.



Who do you consider to be medical leadership at your school?



# Staff Trainings

## Key Points:

- Non-medical school staff are critical to timely recognition of a medical emergency
- Staff- (and student-) focused education on common medical conditions helps diminish anxiety and improve management

### MED-E READY SNAPSHOT

#### **PART 2** **RECOGNIZING THE HEALTH ISSUE**

*Excluding a full-time school nurse, are school personnel trained on how to prevent and recognize medical emergencies and then respond with the necessary medications and devices?*

- a. Yes - all staff are trained on all medications and devices. (2 points)*
- b. Partial yes - some staff are trained on medications and devices. (1 point)*
- c. No - only our full-time school nurse is trained. (1 point)*
- d. No - no one is trained, and we have no full-time school nurse. (0 points)*

#### **YOUR SCORE:**

#### **PREPARE YOUR SCHOOL COMMUNITY.**

The first step to responding to any medical emergency is first recognizing that an emergency is occurring. Once an emergency is recognized, then an effective response can be initiated, which may involve a medication or device. Many chronic diseases can manifest acutely, so it's important to have school community-wide disease awareness strategies.



What medical issues are present in your students?



# Your School's Tools

## Key Points:

- Having adequate tools is important
- Having adequate tools in optimal locations is also important

### MED-E READY SNAPSHOT

#### **PART 3** RESPONSE TOOLS

Does your school have adequate stock medications and devices? "Stock" medications include epinephrine auto-injector, albuterol, and naloxone specifically for your school. An adequate number of automated external defibrillators (AEDs) is defined as AEDs strategically located so that one is within 2-minutes of a cardiac emergency.

- a. Yes - we have all stock medications and an adequate number of AEDs. (2 point)
- b. Partial yes - we have some of these things. (1 point)
- c. No - we have none of these things. (0 points)

#### **YOUR SCORE:**

#### **KNOW WHAT YOU HAVE...**

And what you need. And where to put it.

Campus size may necessitate storing more than one set of medical emergency supplies as well as training more people to use devices and administer medications.



What tools does your school have? Need?



# Your School's Team

## Key Points:

- Response teams work
- Many tasks need to be accomplished during an emergency, and non-medical staff can accomplish many of these using their professional skills

### MED-E READY SNAPSHOT



## RESPONSE TEAM

*Does your school have a medical emergency prevention and response plan with a response team?*

- a. Yes - we have a plan and a team. (2 points)*
- b. Partial yes - we have either a medical emergency prevention and response plan or a crisis response team but not both. (1 point)*
- c. No - we don't have any of these things. (0 points)*

### YOUR SCORE:

#### READY YOUR TEAM, AND MAKE THE PLAN.

Just like hospitals have response teams, schools need a medical emergency response team (MERT) - a team of adults responding to an emergency. And just like your school has well-planned responses to fires, weather, and intruders, it needs a plan for when a medical emergency occurs - a medical emergency response plan (MERP).



Who would be strong MERT members?



# Practice Makes Prepared

## Key Points:

- Drills help improve the plan
- Practice reminds participants of their roles
- Regular drills reminds all members of the school community how to activate and respond to a medical emergency

### MED-E READY SNAPSHOT

#### **PART 5 OPTIMIZING THE RESPONSE**

*Does your school practice responding to medical emergencies?*

- a. Yes - we practice quarterly. (2 points)*
- b. Yes - we practice at least once per year but less than quarterly. (1 point)*
- c. No - we don't regularly practice responding to medical emergencies. (0 points)*

#### **YOUR SCORE:**

#### **CONTINUE TO SET AND ACHIEVE NEW GOALS.**

Your school community is constantly changing - new staff, new students, new needs. Take time to regularly review your school's medical emergency plans including your MERP, MERT, and community-wide disease awareness strategies. Throughout the year, your school's goals should be revisited to assess for progress (and achievements should be celebrated!), and new goals should be set each year.



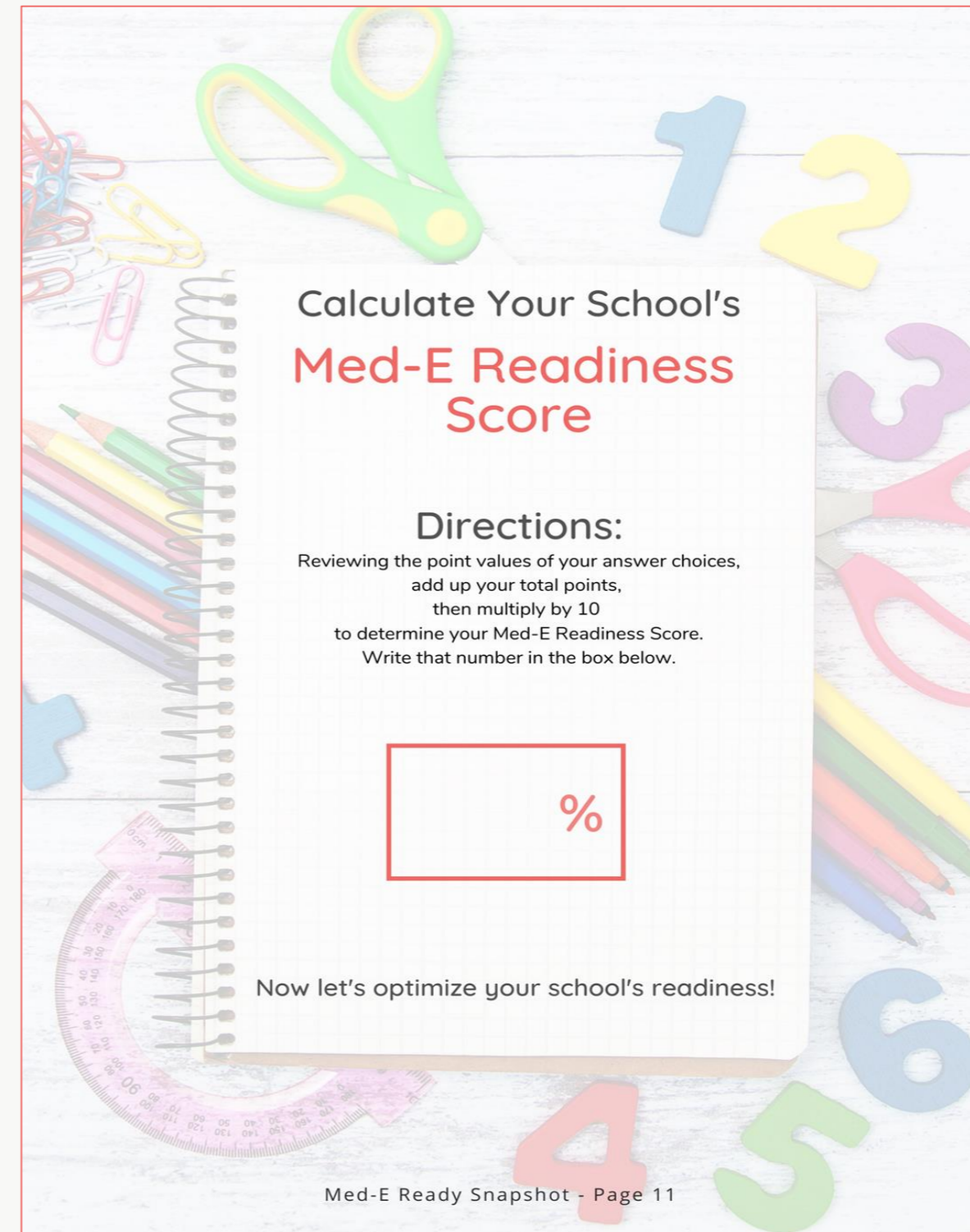
What's a goal you'd like your school to achieve?



# Let's Score!

## Key Points:

- This is only a starting point
- High-scoring schools will want to pay particular attention to details



Calculate Your School's  
**Med-E Readiness Score**

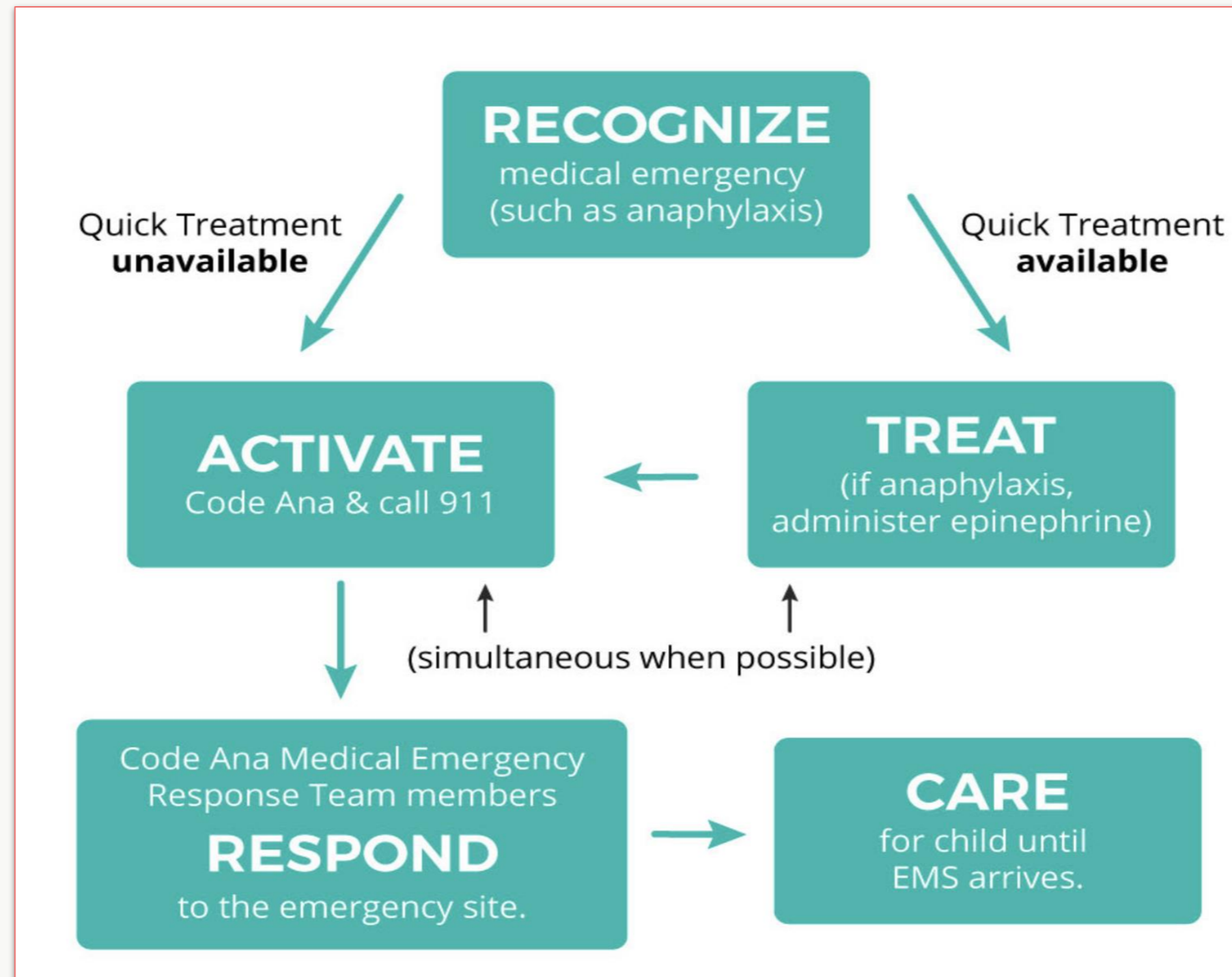
**Directions:**  
Reviewing the point values of your answer choices,  
add up your total points,  
then multiply by 10  
to determine your Med-E Readiness Score.  
Write that number in the box below.

Now let's optimize your school's readiness!

Med-E Ready Snapshot - Page 11



# Medical Emergency Response Algorithm





# Five simple steps will get your school Med-E Ready.

## Med-E Ready Milestones

01

Plan for success using the Code Ana Questionnaire and Calendar

02

Prepare all members of your school community on how to recognize a medical emergency

03

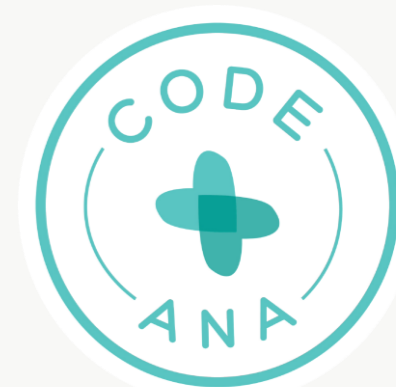
Create your school's own Medical Emergency Response Protocol and Team

04

Practice your school's Medical Emergency Response Plan

05

Maintain optimal preparedness



Effective **ACTIVATION** of your school's medical emergency response plan is critical!



# Resources in Med-E Ready

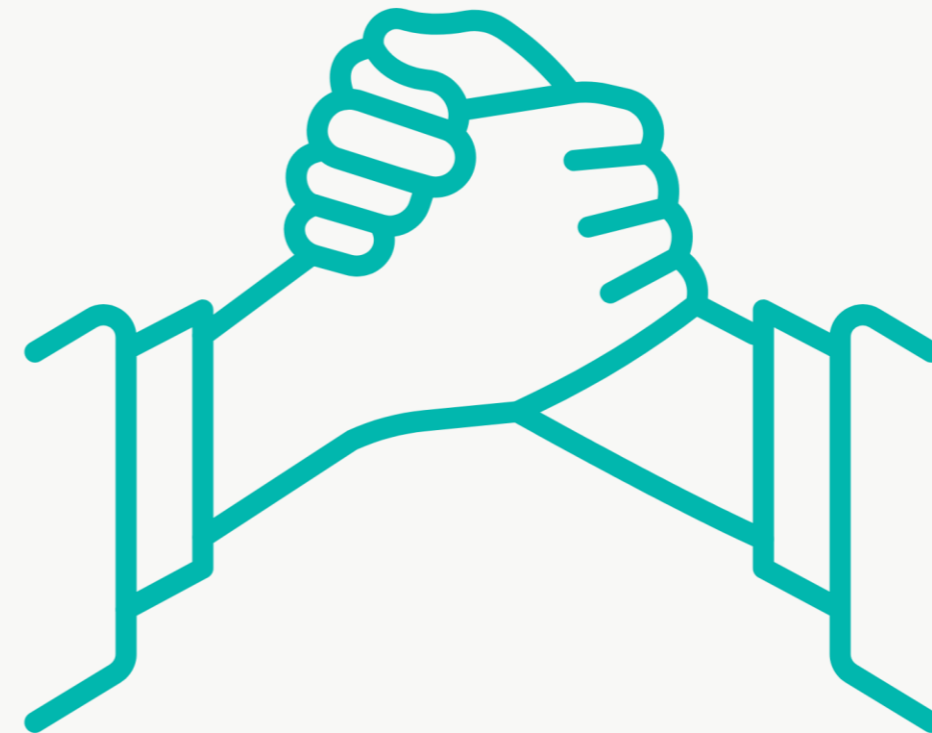


- Med-E Ready Snapshot
- Code Ana Calendar
- Onboarding videos for staff, families, and students
- Handbook
- Drill and Debrief Guide

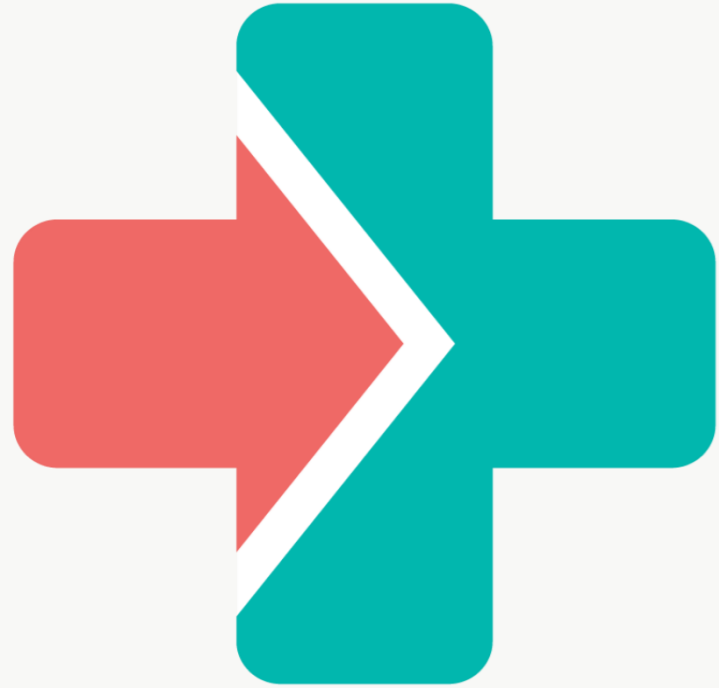


# After completing this workshop, you ARE able to:

- Identify areas of improvement in your school's current emergency preparedness plans
- List the steps of creating a medical-emergency response plan that is:
  - Evidence-based
  - Unique to your school
  - Built upon a team



# Is your school Med-E Ready?



For more information:

- Check out [CodeAna.org](https://codeana.org)
- Email Sarah Jane  
[sarahjane@codeana.org](mailto:sarahjane@codeana.org)



# Downloadable Snapshot Guide

