



## Principal Collaboration Agenda: Lafayette Wednesday, November 15, 2017

Principal Collaboration Events provide principals across Louisiana with access to high-quality tools, resources and professional development to help them effectively lead in 2017-2018.

**Location:**

Bayou Church  
2234 Kaliste Saloom Rd  
Lafayette, LA 70508

**Parking:**

No specifics for this location. Parking is free.

**Agenda:**

12:00 noon - 12:30 p.m. Sign-in (*church foyer*)  
12:30 p.m. - 1:30 p.m. Session Rotation 1

1:40 p.m. - 2:40 p.m. Session Rotation 2  
2:50 p.m. - 3:50 p.m. Session Rotation 3

**Preparation**

All participants should **bring a fully charged laptop computer** with them to the event and [download session materials in advance](#).

**Food and Hotels**

Food will *not* be provided at the event. Click here for a list of [Lafayette restaurants and hotels](#).

**Contact Us**

Please contact your Network support team or [DistrictSupport@la.gov](mailto:DistrictSupport@la.gov) with questions about this event.

# PRINCIPAL COLLABORATION

## Sessions

LEA planning team members will have the opportunity to choose **three** sessions that fit their needs and interests. Attendees from each LEA should coordinate with one another to ensure they get all the necessary information. All sessions are filled on a first come, first served basis.

Session Topics	Session Title	Session Description	Rotation(s)	Room
<b>Accountability</b>	Previewing Louisiana's New Principal and Superintendent Reporting System	This winter, school system and supervisors will be able to dive into their results in a new, interactive reporting system. The new system will replace principal and superintendent profiles, and it will also include workforce and post-secondary outcomes data. In this session, participants will preview the system and learn how to use it to get the information they need for district planning.	3	Café Room 600
<b>Accountability: ESSA</b>	Transitioning to ESSA: Key Changes for Louisiana Accountability	This session will provide an update on ESSA accountability policies following BESE approval at the October meeting.	2	Café Room 600
<b>Instruction: Educational Technology</b>	Let's Get Digital: Louisiana's Educational Technology Initiative	Join this session to learn about the importance of providing a 21 <sup>st</sup> century learning environment that effectively utilizes technology to its fullest extent. It all begins with devices and bandwidth. Participants will explore strategies to create this environment and start planning to transform classrooms.	1  3	Rotation 1: Diner Room 520  Rotation 3: Student Worship Room 500

Session Topics	Session Title	Session Description	Rotation(s)	Room
<b>Instruction: PreK-3</b>	PreK-3 Guidebook for Site and System Leaders	In this session, participants will be introduced to the <a href="#">guidebook</a> and examine five strategies that promote quality and continuity of practices across the PreK-3 continuum and help children acquire a solid foundation for later school success.	2, 3	Family Room 510
<b>Instruction: Social Studies</b>	Content and Claims: Using the Social Studies Rubric to Set High Expectations for Students	In this session, participants will explore the details of the <a href="#">LEAP 2025 content/claims rubric</a> . They will practice scoring authentic student responses and provide rationale for the score in a dynamic group discussion.	2, 3	Room 423
<b>Instruction: ELL</b>	Overview of EL Guidebook	Participants in this session will examine the recommended research based strategies that enhance the English Language programs described in the English Learner Guidebook.	3	Room 526
<b>Instruction: Foreign Language</b>	Multi-lingualism to Enhance Academic Achievement	Participants in this session will learn to integrate World Language instruction in K-8 schools to enhance academic achievement. Attendees will also complete a survey to identify existing access to WL and develop a plan of action to increase effective implementation K-8 classrooms.	1	Room 526
<b>Instruction: Special Education</b>	Overview of SPED Guidebook	In this session site and system leaders will use the Special Education Guidebook to identify the key strategies for creating a successful special education program and will self-assess their current strengths and weaknesses in implementing each strategy. They will also consider the key actions in improving their special education systems.	1  3	Rotation 1: Family Room 510  Rotation 3: Room 410

*Note: All of the session information in this table is subject to change.*

Session Topics	Session Title	Session Description	Rotation(s)	Room
<b>Instruction: Special Education</b>	UDL and Assistive Technology: Teaching that Fits the Needs of Everyone	This session will address the importance of incorporating Universal Design for Learning Strategies and Assistive Technology into all classrooms to increase all student outcomes. This session will provide in-depth examples of UDL and AT using the <a href="#">ELA Guidebooks</a> .	1, 2	Room 410
<b>Instruction: Math</b>	Putting the Curriculum Implementation Scale Into Action in Math	We want to improve your implementation of a high quality math curriculum? Join us to learn the essential components of an effective implementation plan, analyze the tools and resources available by LDE, and collaborate with your colleagues on strategies that push schools up the <a href="#">Curriculum Implementation Scale</a> .	1,2	Student Worship Room 500
<b>Instruction: Science</b>	Louisiana Student Standards for Science: Identifying High-Quality Science Curricula	What does curriculum aligned to the new science standards look like? Join us to analyze and practice using the <a href="#">instructional materials rubric</a> . Participants will leave this session with a concrete understanding of what high quality science instructional materials should look like.	1, 2	Garage Room 400
<b>Principal Support: TAP and the Principal Fellowship</b>	TAP and Principal Fellowship Opportunities for Principals	For this session, participants have an opportunity to engage in a panel discussion with their peers currently taking part in <a href="#">TAP</a> and <a href="#">Principal Fellowship</a> . After the discussion, panel members will host small group discussions to talk more in depth about how these programs have led to changes in their schools.	1	Café Room 600

*Note: All of the session information in this table is subject to change.*

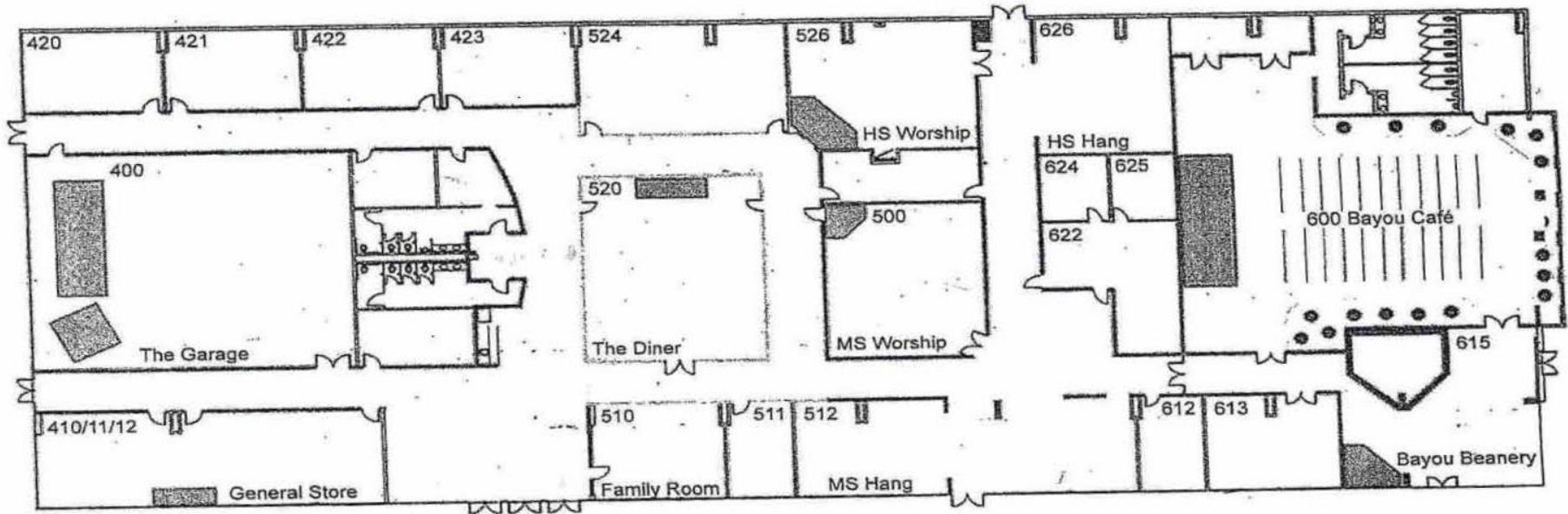
Session Topics	Session Title	Session Description	Rotation(s)	Room
<b>Assessment</b>	Assessment Resources: Understanding Assessment Guide Updates and Accessing and Using Annotated Student Responses	In this session, participants will be updated on minor test structure changes to ELA and Social Studies assessments. Participants will also engage in a high level walk through of how teachers can best use annotated student work to understand the assessment expectations for student writing in social studies, ELA, and math.	2	Room 422
<b>Assessment: Math LEAP 360</b>	Integrating Results: Using the LEAP 360 Reports in Math	Participants in this session will walk through the <a href="#">Math LEAP 360 Results Report</a> focusing on what the reports do and do not indicate about students. Attendees will use the real data to identify trends of weakness and next steps in classroom instruction	3	Diner Room 520
<b>Assessment: ELA LEAP 360</b>	Integrating Results: Using the LEAP 360 Reports in ELA	Attendees in this session will walk through the <a href="#">ELA LEAP 360 Results Report</a> focusing on what the reports do and do not indicate about students. Attendees will use the real data to identify trends of weakness and next steps in classroom instruction.	1	Room 423
<b>Assessment: LEAP 2025</b>	LEAP 2025 High School Practice Tests	During this session, participants will learn and apply best practices for administering the <a href="#">LEAP 2025 high school practice tests</a> .	1	Room 422
<b>Assessment: ELPT</b>	Overview of ELPT Assessment Guide	In this session, ELL Supervisors will take an accompanied walk through the new <a href="#">ELPT Assessment Guide</a> . We will review the contents of the guide and analyze the new format and approach of the ELPT by comparing it to ELDA.	2	Room 526

*Note: All of the session information in this table is subject to change.*

Session Topics	Session Title	Session Description	Rotation(s)	Room
<b>Assessment: Science</b>	Science Field Test	Participants will have the opportunity to learn about science field testing for Spring 2018, in particular (1) the connection between the instructional vision and assessment vision for the new <a href="#">LSS for Science</a> , and (2) how multi-dimensional alignment and set-based design support the shifts in instruction required by the LSS for Science.	3	Garage Room 400
<b>Talent</b>	Content Leader and Mentor Teacher Training	Mentor Teachers and Content Leaders both provide an exciting opportunity to grow your local leadership pipeline while also creating a cadre of educators who have the knowledge, skills, and resources to coach and support other teachers within their schools and districts. Attend this session to get a sneak peek at the training Mentor Teachers and Content Leaders will receive and discuss ways to maximize the impact of these talented educators within your schools and districts.	2  3	Rotation 2: Diner Room 520  Rotation 3: Room 422
<b>Student Opportunities: High School Updates</b>	High School Policy Updates	In this session, participants will explore recently approved high school courses including options for 2017-2018 graduates with credit in AP Physics I. Participants will also learn of funding opportunities available to subsidize low income AP exam fees.	1, 3	Room 421
<b>Student Opportunities: High School Updates</b>	Financial Aid Planning and Supplemental Course Allocation/Course Choice Updates	Participants in this session will be informed about the new <a href="#">FAFSA completion policy</a> for the senior class of 2018. Resources for financial aid planning and assistance will be discussed. The upcoming deadlines, dates for spring registration, and procedures for reallocation will be shared.	2	Room 421

*Note: All of the session information in this table is subject to change.*

**The Bayou Church – Lafayette  
Ministry Center Floor Plan**



*Note: All of the session information in this table is subject to change.*