

# ALTERNATIVE EDUCATION

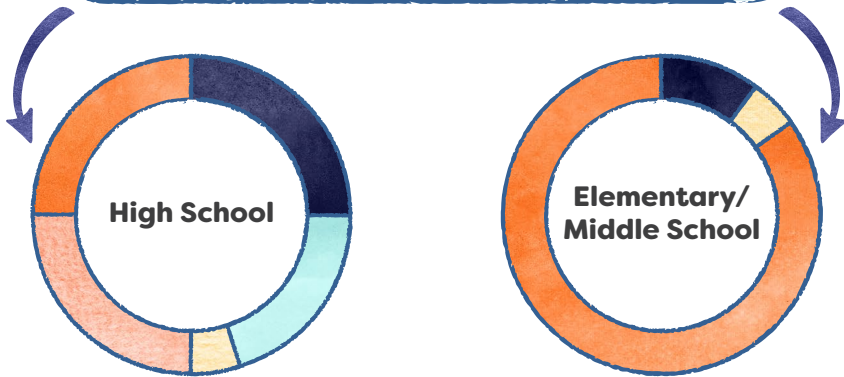


## SCHOOL



TIME STUDENT ATTENDS IS **>45** CONSECUTIVE DAYS

ACCRUES ITS OWN ACCOUNTABILITY SCORE



Dropout/Credit Accumulation Index (25%)

Progress Index (25%)

Core Academic Credit Accumulation Index (25%)

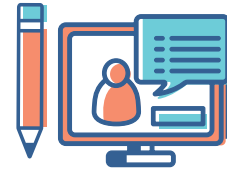
Credential Attainment Index (20%)

Interests and Opportunities (5%)

Progress Index (K-8) (85%)

Core Academic Credit Accumulation Index (6-8) (10%)

Interests and Opportunities (K-8) (5%)



## PROGRAM



TIME STUDENT ATTENDS IS **<45** CONSECUTIVE DAYS

Accountability remains with sending school

**BOTH SCHOOLS AND PROGRAMS WILL BE MONITORED**

APPLICATION YEAR

RENEWAL - YEAR 1 (R1)

RENEWAL - YEAR 2 (R2)

RENEWAL - YEAR 3 (R-3)

**STATUS WILL BE DETERMINED ANNUALLY**

Approval, Provisional Approval, Nonrenewal

**REAUTHORIZATION - YEAR 3**