

Louisiana Believes

**District Planning Call
April 5, 2017**

Agenda

I. 2017-2018 District Planning Process

A. Early Childhood

B. High Quality Teaching

C. High School Pathways

II. ESSA

III. 2016-2017 Action Steps

IV. Call Summary

The LDOE recommends the following supervisors attend this call:

- Curriculum and Instruction
- District Test Coordinators
- Accountability
- Early Childhood
- High School
- Career and Technical Education
- Principal and Teacher Leader
- Human Resources
- Special Education Directors

Early Childhood

Early Childhood: 2017-2018 Priorities

School systems will continue to help prepare all children for kindergarten by:



Providing all classrooms with accurate CLASS observations and actionable feedback (if district is Lead Agency only)



Supporting sites to implement Tier 1 curricula and improve instructional quality



Improving success for families by strengthening coordinated enrollment processes

Early Childhood: Phase 3



PHASE 3:
Communicate Plans

During Phase 3 of the 2016-2017 academic planning process, early childhood programs and lead agencies should focus on communication with stakeholders that:

- 1. squarely frames the improvement targets for 2017-2018;*
- 2. clearly delineates current gaps; and*
- 3. affirms expectations for stakeholder responsibility in the plan for achieving success.*

Phase 3 Planning: Early Childhood Programs

Early childhood programs should put in place a schedule of site leader meetings for 2017-2018 to:

1. *reinforce the connection between the Practice Performance Profile indicators and preparing every child for kindergarten;*
2. *ensure that site leaders are aware of the improvement targets and know their role and responsibility with the improvement strategies;*
3. *check progress toward improvement targets; and*
4. *evaluate and revise strategies.*

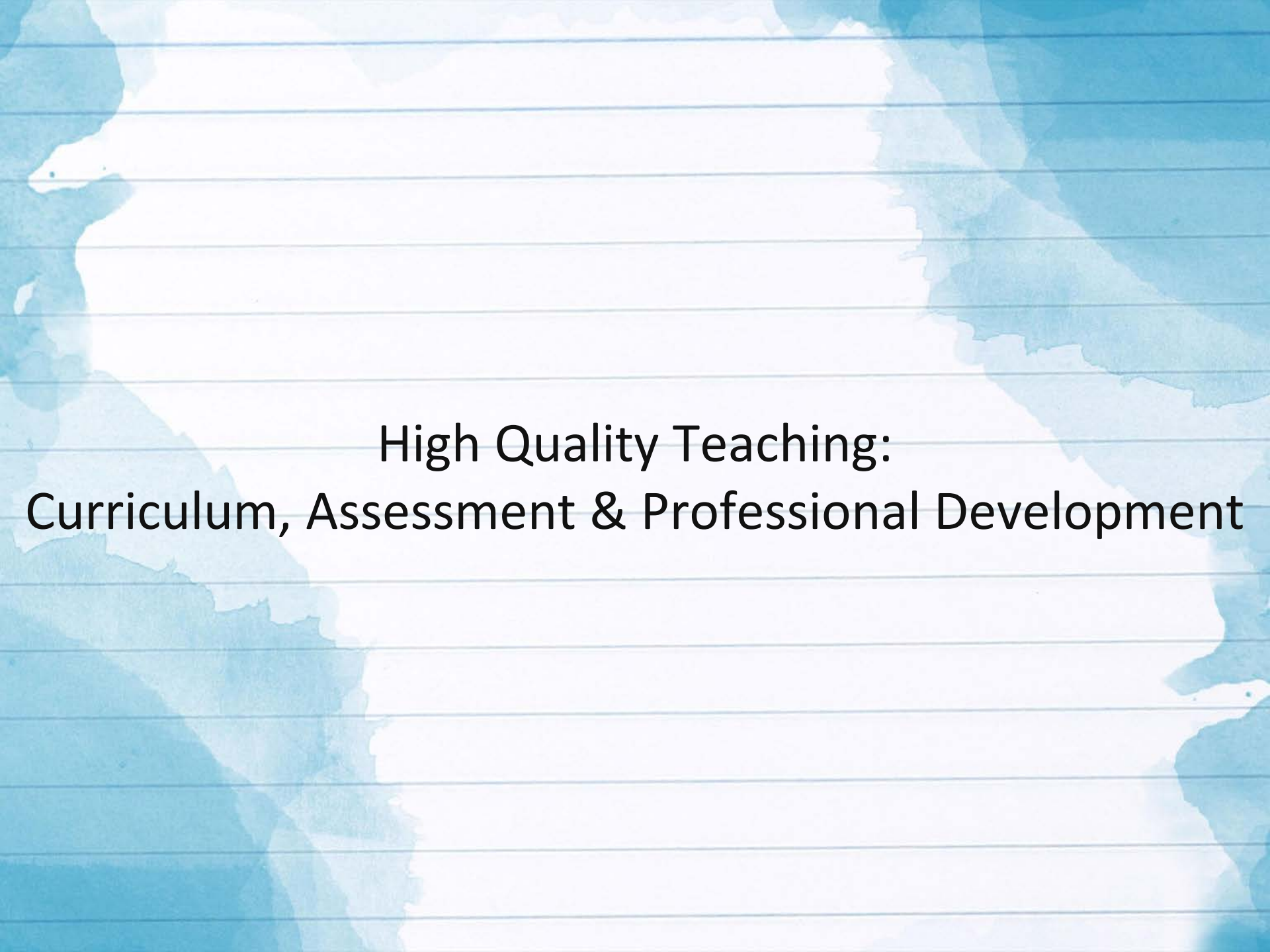
Spending time with site leaders builds community, promotes shared responsibility, and gives successful ideas the opportunity to grow.

Phase 3 Planning: Lead Agencies

Lead Agency Assurances provide the foundation for communication around your 2017-2018 plan for improvement.

- *Conduct meetings for all community network program partners once each month.*
- *Engage Community Partners who want to support early care and education in the community.*
- *Use the community's coordinated enrollment information campaign to engage and inform parents about community-wide improvement efforts.*

Maintain ongoing dialogue with program partners that is focused on improvement targets and strategies.



High Quality Teaching: Curriculum, Assessment & Professional Development

Curriculum, Assessment & PD: 2017-2018 Priorities

School systems will build on and deepen the academic work they have already done to improve instruction in every classroom. Specifically, school systems should:



Choose high-quality curricula in all subject areas and grade levels, including math, English language arts, early childhood, and social studies



Streamline the use of high-quality assessments to reduce overall testing and improve the quality of tools used



Provide regular, ongoing professional development for educators that is rooted in a curriculum and informed by student work

Curriculum, Assessment and PD: Phase 3



During Phase 3 of the 2016-2017 academic planning process, school systems should:

- ensure teachers and principals know what curricula and assessments they will use in 2017-2018 and provide access to the materials through end-of-year conversations;
- share professional learning calendar and objectives for the year with teachers; and
- share 2017-2018 academic vision with parents and community members through end-of-year or back-to-school events.

Phase III Planning Resources: End-of-Year Conversations

End-of-year conversations between principals and teachers should center on the following topics:

- What is the attainment level for your Student Learning Targets? What led to/hindered success?
- What changes in practice took place this year? What additional changes need to take place based on feedback from observations?
- What resources are available or needed to support and enhance teacher and student success?
- How did data inform instruction this year? How will the data collected this year guide future instruction?
- What opportunities and resources are available as we prepare for next year?
- What is the academic plan for your school/school system next year?

Please see the [Louisiana Principals' Teaching and Learning Guidebook](#) for more information about end-of-year processes or email compass@la.gov with questions.

Phase III Planning Resources: 2017 Teacher Leader Summit

SAVE THE DATE: The 2017 Louisiana Teacher Leader Summit will take place **June 6-9 at the Morial Convention Center in New Orleans**. This event will bring together 5,000 educators and content experts from across the state to share their knowledge, learn new skills, and prepare for the upcoming 2017-2018 school year.

Summit Objectives

- **Improve the everyday practice of educators in Louisiana** by building their knowledge and skill in key areas related to their role
- **Provide opportunities for educators to collaborate and share best practices**
- **Introduce high-quality resources and professional development** that can be adopted and scaled in schools and districts across Louisiana
- **Foster a culture that celebrates and engages** educators and **empowers and inspires** them to take on an even greater leadership role within their classrooms, schools and districts

2017 Teacher Leader Summit Draft Schedule

Tuesday, June 6, 12:00-5:00

- School system/LEA supervisors
- School counselors
- Early childhood lead agency supervisors
- Principals

Wednesday, June 7, 8:30-5:00[¥]

- School system/LEA supervisors
- School counselors
- Early childhood lead agency supervisors
- Principals
- Teacher Leaders
 - ELA*
 - Math*
 - Social studies*
 - Science*
 - ELL/WL*
 - SpEd

Thursday, June 8, 8:30-5:00[¥]

- Plenary
- Principals[†]
- LDOE and partner led sessions for Teacher Leaders
 - ELA
 - Math*
 - Social studies
 - Science*
 - ELL/WL*
 - SpEd
- Teacher Leader-led sessions for all subjects and grades

Friday, June 9, 8:30-11:45

- Teacher Leader-led sessions for all subjects and grades
- LDOE-led sessions for Teacher Leaders

[¥] Lunch provided

* Full-day, partner-led sessions for Teacher Leaders; pre-registration required

[†] Full-day Eureka Institute for principals; pre-registration required

2017 Teacher Leader Summit PD Partners

ELA:

- ANet (guidebook support)
- The Writing Revolution (guidebook support)
- Relay Graduate School of Education (guidebook support)
- Common Lit (ed tech guidebook support)
- TextHelp (ed tech guidebook support)
- EL Education (new full program under review, grades K-2)
- Great Minds (new program under review, grades K-8)
- American Reading Company (Tier I foundations program, grades K-2)
- Amplify (CKLA) (Tier I foundations program, grades K-2)
- Pearson myPerspectives (Tier I program, grades 6-12)
- HMH Collections HS (Tier I program, grades 9-12)

Math:

- Great Minds
- ZEARN
- LSU Cain Center
- Springboard (Intensive Algebra I piloting districts)
- ANET (Eureka remediation tools)

Social Studies:

- DBQ (new 4-12 program under review)
- Gilder Lehrman (Tier I program for HS)
- WWII Museum
- Historic New Orleans Collection

Science:

- Louisiana Tech University
- LSU Cain Center
- Louisiana Science Teachers Association

Computer Science:

- Cyber Innovation Center

2017 Teacher Leader Summit Registration


Registration for the [2017 Teacher Leader Summit](#) will open Thursday, April 20 and will close Monday, May 15. Each LEA will receive an allotment of seats similar to 2016; LEAs will be able to request additional seats as space permits.

Registration Webinar for Teacher Leader Coordinators

At 1:00 on April 19, the Department will host a webinar for Teacher Leader coordinators to share detailed information about the registration process, including seat allotments. Please ensure your Teacher Leader Coordinators attend this webinar.

Click [here](#) to sign up to receive the Teacher Leader newsletter.

Contact LouisianaTeacherLeaders@la.gov with questions related to the 2017 Teacher Leader Summit.



High Quality Teaching: New Phase II Planning Resources

Resources for Phase II Planning: Instructional Material Reviews

The Department conducts ongoing reviews of curricular materials to support school systems in adopting Tier 1 curricula in math, ELA, social studies, science, and early childhood.

New! Tier 1 and Tier 2 instructional materials have recently been added to the website. Find Tier 1 and Tier 2 curricula on the [Annotated Reviews webpage](#).

Publisher	Title	Core Subject	Tiered Rating
Success for All	KinderCorner, Grade K	ELA	2
Zearn	Zearn Gr 5 [Completes Zearn Gr 1-5 program]	Math	1
Great Minds	Wit and Wisdom, Gr 3-8	ELA	1
The DBQ Project	Social Studies, Gr K-12 (Supplemental)	Social Studies	1

District Action Steps: Please share this information with textbook adoption supervisors, curriculum directors and educational technology staff.

Reminder: Staff, parents, and partners can participate in the review process through the Department's Instructional Materials Review [webpage](#).

Resources for Phase II Planning: Instructional Material Reviews

The Department is now accepting the following submissions for the 2017-2018 instructional materials review cycle.

- Early childhood education
- Full curriculum for English language arts (ELA), math, social studies, and science (**New!**)
- Benchmark assessments for ELA and math

Prescreening for the 2017-2018 review round begins on April 17, 2017. Content alignment reviews will begin in July 2017. Priority will be given to K-12 science reviews and all district requests.

District Action Steps:

- Send any district requests for materials review to LouisianaCurriculumReview@la.gov.
- Direct vendors to submit materials [here](#)
- Access the [Weekly Report](#) to identify which materials have been submitted for review and when we anticipate posting final reviews.

Resources for Phase II Planning: Louisiana Student Standards for Science Implementation

To support educators with the transition to new standards the Department will provide substantial support with curriculum, local assessments, and professional development.

Area	Support and Timeline
Curriculum and Resources	<p data-bbox="463 592 1062 635">Instructional Materials Review</p> <ul data-bbox="463 649 1767 806" style="list-style-type: none"><li data-bbox="463 649 1584 692">• Rubric released and call for submissions - <i>March 2017</i><li data-bbox="463 706 1767 749">• Hiring and training of Teacher Leader Advisors- <i>April/May 2017</i><li data-bbox="463 763 1391 806">• First curriculum reviews released - <i>Fall 2017</i> <p data-bbox="463 878 879 921">New Standards Tools</p> <ul data-bbox="463 935 1622 1149" style="list-style-type: none"><li data-bbox="463 935 1545 978">• Connections to ELA and math standards - <i>April 2017</i><li data-bbox="463 992 1545 1035">• Key shifts and instructional implications - <i>April 2017</i><li data-bbox="463 1049 1487 1092">• Middle School sample transition plan - <i>June 2017</i><li data-bbox="463 1106 1622 1149">• Sample scope and sequence documents - <i>Summer 2017</i>

Resources for Phase II Planning: Louisiana Student Standards for Science Implementation

Area	Support and Timeline
Professional Development	<p>Self-paced Learning</p> <ul style="list-style-type: none"> • Live and recorded webinars on new standards - <i>May - July 2017</i> <p>Collaborations</p> <ul style="list-style-type: none"> • Session at March 2017 collaboration • Sessions at 2017-2018 collaborations <p>Teacher Leader Summit</p> <ul style="list-style-type: none"> • Multiple 2-day and 1-day institutes at the TL Summit (PD Partners: Louisiana Tech University, LSU Gordon A. Cain Center, Louisiana Science Teachers Association) <p>PD Partners</p> <ul style="list-style-type: none"> • The Department is working with PD partners, including local Universities, to align trainings to the new standards. • Louisiana Tech is offering intensive (4-day) summer trainings in both north and south Louisiana. Dates, costs, and registration are detailed in the linked flyers.

Resources for Phase II Planning: Louisiana Student Standards for Science Implementation

Area	Support and Timeline
Assessments	<p data-bbox="484 451 962 489">Summative Assessment</p> <ul data-bbox="484 515 1545 819" style="list-style-type: none"><li data-bbox="484 515 1406 558">• Field test (grades 3 through 8) - spring 2018<li data-bbox="484 579 1271 622">• Field test (EOC Biology) - spring 2019<li data-bbox="484 644 1545 686">• Operational test (grades 3 through 8) - spring 2019<li data-bbox="484 708 1263 751">• New 5-level Biology EOC- 2018-2019<li data-bbox="484 772 1466 815">• Platform the same as ELA, Math, Social Studies <p data-bbox="484 908 962 946">EAGLE Assessment Tool</p> <ul data-bbox="484 965 1777 1176" style="list-style-type: none"><li data-bbox="484 965 1777 1065">• Teacher Leader Advisors will help create sample assessment items, hired in April/May 2017 and trained during the summer<li data-bbox="484 1079 1748 1176">• EAGLE items created throughout the 2017-2018 summer and school year

Resources for Phase II Planning: Physical Education Standards

- Bulletin 102 contains the Louisiana Physical Education standards that were last revised in December 2009.
- In response to requests from physical education educators and stakeholders, the Department assembled a workgroup to review and make recommendations for updating the current Louisiana Physical Education standards.
- This group includes K-12 physical education teachers, higher education physical education professionals, and representatives from the Louisiana Department of Health, Alliance for a Healthier Generation, and Governor's Council on Physical Fitness.
- The group held public meetings from January through March to review and revise the standards.
- The [draft standards](#) were posted for public comment from March 13, 2017 to March 27, 2017 and will be considered for adoption by BESE at their April meeting.

Please email louisianastandards@la.gov with questions.

Resources for Phase II Planning: LA Connectors for English Learners and Students with Significant Disabilities

In order for the Louisiana Connectors to be used successfully during the 2017-2018 school year, educators and the Department will work together to implement the following academic support plan.

- **Curriculum and resources** – New standards, curricular and instructional resources, and parent communication tools (May 2017)
- **Assessments** – Preview of assessment design and structure (summer 2017), new assessment administration (spring 2018)
- **Teacher training and professional development** – Trainings on new standards (summer 2017 and on-going) and provide recommendations to districts for continuing support (ongoing)

Email louisianastandards@la.gov with questions.

LA Connectors Summit Training

Teacher Leader Summit Trainings:

A series of initial cohort trainings will be offered on the LA Connectors for [English Learners](#) and Students with Significant Disabilities to support school systems in the implementation phase

- School systems should identify participants that will be able to train and support educators throughout the year in implementing the Connectors.
- Initial training will equip participants with a working knowledge of the Connectors and will receive materials to support educators with application of the Connectors.
- Cohorts participants will continue to engage in additional trainings and support throughout the 2017-2018 school year.
- School systems will receive an invite to pre-register participants based on current enrollment of targeted population.

LA Connectors Summit Training

Teacher Leader Summit Event	Scope of Training	Audience	Facilitator	Cost
English Learners Cohort Training	series of 2 full day trainings	Teacher Leaders identified by LEAs; responsible for supporting implementation	Education Northwest Consultants	Travel Only
English Learners Coaching Model	planning and training for pilot implementation	LEAs who have chosen to implement full coaching model in 2017-18	SC3 Comprehensive Center	Travel Only
Students with Significant Disabilities Cohort Training	1 full day training	Teacher Leaders identified by LEAs; responsible for supporting implementation	LDOE Students with Disabilities team	Travel Only

Please email louisianastandards@la.gov with questions.

Resources for Phase II Planning: Supporting World Language Instruction

A series of trainings will be offered at the Teacher Leader summit to support World Language instruction.

Two-day trainings for World Language educators

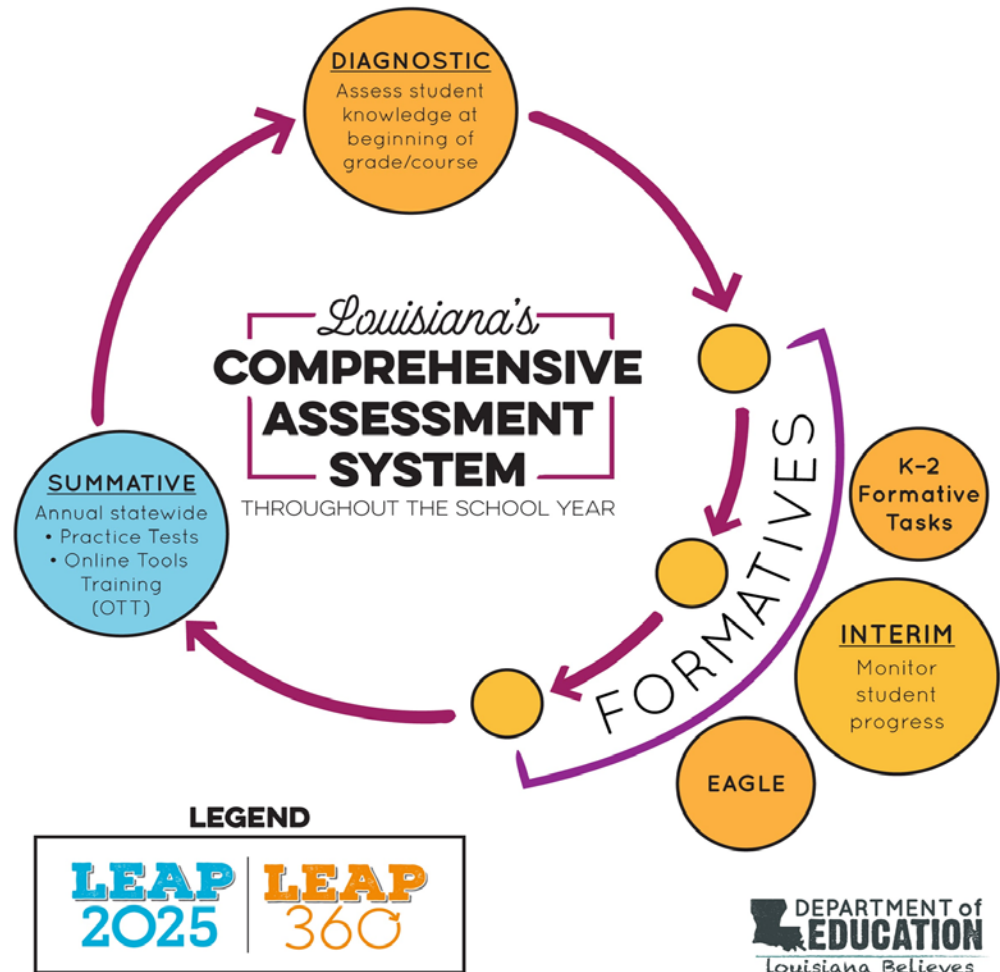
- Day one- participants will explore the principles of Sheltered Instruction in the World Language classroom (all participants)
- Day two-breakout sessions for different models; Immersion or FLES
- LEAs will receive invite to pre-register participants to these trainings by April 20th

Email michele.braud@la.gov or david.best@la.gov with questions.

Resources for Phase II Planning: Louisiana's Comprehensive Assessment System

The Department is building a comprehensive assessment system of formative, summative and diagnostic assessments that are aligned to Louisiana's Student Standards.

This system will provide school system leaders, principals and teachers with the tools needed to effectively and efficiently assess student learning.



LEAP 360

LEAP 360 is a tool to help:

- **Teachers** understand a more complete picture of student performance at the beginning, throughout, and end of the year.
This understanding helps teachers
 - adjust their instruction to help all students achieve
 - set meaningful, yet ambitious, goals for student learning
 - monitor learning toward that goal
- **Principals** identify throughout the system where additional support is needed.
Providing information to focus educators on the learning that matters most for students
- **Districts** identify throughout the system where additional support is needed.
Providing tools that help districts monitor progress toward goals

2017-2018 Comprehensive Assessment System

LEAP 360--Formative				
Tool	Content Area & Grade/Course	Includes	Recommended time of year to be administered	Reporting
Diagnostic	3-8 ELA & Math Algebra I, Geometry, English I, English II	1 Form	Beginning of year/course	Student, Class, School, District, State
Interims	3-8 ELA & Math	2 Forms	ELA Form 1-late October Math Form 1-December Form 2-March	Student, Class, School, District, State
	Algebra I, Geometry, English I, English II	3 Forms	Form 1-October Form 2-January Form 3-March	
K-2 Tasks	K, 1, 2 ELA & Math	32 tasks (16 ELA, 16 math)	throughout year, guidance provided	N/A
EAGLE	K-HS ELA, Math, Sci, SS	over 5,500 items	throughout year	Performance, Test Session, Statistic
LEAP 2025--Summative				
End-of Year/Course (LEAP 2025)	3-8 ELA, Math, Sci, SS Alg I, Eng I, Geom, Eng II, Bio, Eng III, US History	multiple forms spiraled at student level	April/May	Student, Class, School, District, State

LEAP 360 Interim Preview Opportunity

In April, school systems will be able to preview one ELA and one math interim form for each grade, 3 through 8.

Interim Preview webinars are scheduled for April 25 and 27, 10:00 a.m.

The webinars will provide information on:

- how districts may preview the interim forms,
- interim reports, and
- resources that support interim administration, scoring, and reporting.

To join the meeting: <https://louisianaschools.adobeconnect.com/leap/>

Audio conference details: 855-240-2575

Participant pin code: 89147656

Email assessment@la.gov with questions.

Upcoming LEAP 2025 & LEAP 360 Assessment Resources

The following tools will be available to support teachers and students with upcoming diagnostic, interim and summative assessments.

Assessment Item	Description
Teacher Leader Summit sessions	June 2017: provide multiple opportunities for educators to learn more about the LEAP 360 tools and resources.
2017-2018 Assessment Guides	Coming Summer 2017: provide more detailed information about the test design and include samples illustrating the various item types
Diagnostic Quick Start Guide	Summer: provides all of the resources needed to access the diagnostics, diagnostic guidance documents, prepare for online administration, score the diagnostics, and access the computer-based reports.
Interim Quick Start Guide	Summer: provides all of the resources needed to access the interims, interim guidance documents, prepare for online administration, score the interims, and access the computer-based reports.

Resources for Phase II Planning: School Redesign

As part of the state's ESSA plan, 225 schools have been identified as needing comprehensive support. In order to support the creation of district plans to support these schools, the Department offered the School Redesign Planning Grant.

- Between rounds 1 and 2, 60 school system applications were received, representing 44 unique partner organizations, with an anticipated \$1.3M total allocation to school systems.
- **By the end of day today, Round 1 awardees should log in to [eGMS](#) and load budget information.** All planning grant funds must be used no later than September 30, 2017.

Later this year the Department will release the School Redesign Application to award competitive funding for ESSA school improvement funding. Our current draft timeline of key dates is as follows:

- Fall 2017: Department releases School Redesign Grant application
- Fall 2017: Application submission and review
- Winter 2017-2018: Grant awards approved by BESE

For additional information please contact your Network Leader or hunter.brown@la.gov.

Resources for Phase II Planning: IDEA Grant Application for State Activities

Each year the state is required to complete an application for funds under the Individuals with Disabilities Education Act (IDEA). As part of this process, the state is required to outline how the set aside portion of the grant will be used.

The Federal Fiscal Year (FFY) 17 IDEA grant application for set aside funds reflects a set of priority areas the state will focus on to support the growth of students with disabilities in the state.

1. Building a workforce that is prepared to respond to the needs of all students with disabilities
2. Developing standards aligned tools and resources that support the growth of students with disabilities and minimizes redundant work across the state
3. Providing support for understanding and appropriately responding to the unique ways different disabilities manifest in the classroom
4. Establishing structures that ensure students have their individual needs identified and appropriately supported provided as early as possible and ensure students experience effective transitions to life after high school.


Once the application is submitted in early May, the Department will begin a competitive search for partners to carry out the activities and priorities as necessary. **Written public comment will be accepted on the FFY 17 IDEA grant application through April 30, 2017.**

Email specialeducation@la.gov with questions.

Additional Resources for Academic Planning

The following additional resources will be released this spring to support Phase 2 of the academic planning process:

- **[School System Professional Development Planning Guide](#)**: *helps school systems create a strong PD plan for 2017-2018*
- **Updated SLT template and samples**: *coming this spring*
- **New ELA Guidebook 2.0 units**: *coming this spring*
- **Updated Principal Guidebook**: *coming this spring*
- **Teacher and parent resources regarding the new LA Connectors**: *coming this summer*



High Quality Teaching:
Leadership Development & Talent Management
Resources

Leadership Development & Talent Management: 2017-2018 Priorities

A skilled teaching force is necessary to achieve academic success with students. To this end, school systems and schools will create a “talent pipeline” at every level of the system. Specifically, school systems should:



Establish and/or expand teacher preparation partnerships that:

- Meet identified workforce needs, as portrayed in annually-released educator workforce reports;
- Include yearlong teaching residencies in which aspiring teachers train alongside expert mentor teachers;
- Identify and develop mentor teachers who are prepared to support aspiring and new teachers.



Identify excellent educators and create professional growth experiences to:

- Grow and leverage teacher leaders effectively in all content areas; and
- Provide challenging experiences to help principals improve their ability to coach and support educators.

Leadership Development & Talent Management: Phase 3



PHASE 3: Communicate Plans

During Phase 3 of the 2016-2017 academic planning process, school systems should:

- Build awareness of Believe and Prepare partnership opportunities with principals and prospective mentors.
- Proactively communicate about the mentor role so excellent teachers are aware of the opportunity.
- Communicate changes to school system compensation plans.

Phase III Planning Resources: Leadership Development & Talent Management

Build awareness of Believe and Prepare partnership opportunities with principals and prospective mentors.	<ul style="list-style-type: none">● Ensure that principals and current or prospective mentors are aware of Believe and Prepare partnerships, including the expected number and placement of yearlong residents in 2017-2018.
Proactively communicate about the mentor role so excellent teachers are aware of the opportunity.	<ul style="list-style-type: none">● Use teacher results to identify mentor teachers to serve in the 2017-2018 school year.
Communicate changes to school system compensation plans.	<ul style="list-style-type: none">● Communicate with educators about about any changes to the 2017-2018 compensation schedule.

Phase III Planning Resources: 2016-2017 Educator Workforce Report

The Educator Workforce Report, an internal report, provides district leaders with a field of data to help inform decisions they are charged with making regarding the educators and education leaders in their districts.

Data in the Educator Workforce Report may be used to inform decisions related to:

- **Recruiting and hiring**
- **Evaluating results**
- **Compensating teachers and school leaders**
- **Retaining teachers and granting tenure**

The Educator Workforce Report is now available in each district's FTP.

Based upon feedback from some districts, the out-of-field appendix is being refreshed and will be dropped into the FTP the first week in April.

Email sara.Strickland@la.gov with questions.

Phase II Planning Resources: Believe and Prepare Teacher Preparation Transition Guide

The [Teacher Preparation Transition Guide](#) outlines the transition timeline and supports available to preparation providers and their school system partners as they align preparation experiences and partnerships to meet BESE's updated teacher preparation program requirements. The guide was **updated in February** to include:

- [Believe and Prepare Newsletter](#)
- [Tomorrow's Teacher: A Believe and Prepare Educator Blog](#)
- [Funding Technical Assistance Guidance](#)
- [Believe and Prepare Residency Expansion Grant Opportunity](#)
- [Partnership Tools](#)

For more information, please contact BelieveAndPrepare@la.gov.

Phase II Planning Resources: Believe and Prepare Transition Funding Supports

By July 2018, all teacher preparation programs in Louisiana will include a yearlong classroom residency alongside an experienced mentor teacher. This chart summarizes the current funding supports in place to support this transition.

Believe and Prepare Transition Funding Supports

Formula Funding	<ul style="list-style-type: none">• \$1.5 Million approved in January• Funding technical assistance guidance is available in the updated transition guide on page 7
High-Cost Needs Pool Applications	<ul style="list-style-type: none">• BESE approved allocations between \$15,000 and \$25,000 for all proposals in March
Residency Expansion Grants	<ul style="list-style-type: none">• Released in mid-February to support the expansion of teacher preparation programs that meet workforce needs, particularly in rural TIF districts and in special education• Full applications are due April 28.

For more information, please contact BelieveAndPrepare@la.gov.

High School Pathways

High School Pathways: 2017-2018 Priorities

School systems will continue to support student graduation pathways and postsecondary planning through individual graduation planning. Specifically, school systems should:



Identify and offer students TOPS University Pathways that ensure students going to four-year colleges have taken a true college preparatory curriculum in high school and have every chance possible to receive TOPS



Identify and offer students Jump Start TOPS Tech Pathways with career courses and workplace experiences leading to the attainment of an industry credential and eligibility for TOPS Tech



Assist all students with financial aid planning to remove the financial barriers to accessing postsecondary education and training

High School Pathways: Phase 3



During Phase 3 of the 2016-2017 academic planning process, school systems should:

- Ensure that schools and counselors have information on programming for identified university and career pathways.
- Promote pathway offerings and financial aid resources to students and parents through end-of-year or back-to-school events, the new automated text response system, or Jump Start video network.

Phase III Planning Resources: Individual Graduation Planning

Professional school counselors are tasked with:

- supporting the Class of 2019 in designating a diploma pathway (TOPS University Diploma or TOPS Tech Career Diploma) by the end of this school year;
- developing postsecondary education goals and/or workforce plans for students;
- selecting 2017-2018 academic year's coursework aligned with students' interests; and
- completing [financial aid information](#) for **2018** Cohort.

To support counselors in this work, the Department released [Individual Graduation Plan Guidance](#) and [Student with Disabilities Guidance](#).

To further support this work, data managers should verify the following data is entered into local software for uploading into Student Transcript System (STS) / eScholar

- Student diploma pathway designation
- Career option codes
- Certificates for industry-based credentials

Please email JumpStart@la.gov with questions.

Phase III Planning Resources: Financial Aid Planning

As of March 31, 2017, 39% of Louisiana public school seniors applications have completed the FAFSA. Senior completion rate for the same week in 2016 was 22%.

Throughout the spring, Networks, **school systems and high schools will receive weekly breakdowns of the number of FAFSA applications submitted and completed** for the 2016-2017 school year. **Specific school data** can be obtained through Network contacts or by contacting LDEFinancialAid@la.gov. **Specific student level data** can be obtained by having a district agreement with Louisiana Office of Student Financial Assistance (LOSFA), please contact robyn.lively@la.gov for more info.

FAFSA Completion Campaign:

- In order to support parents and students in completing the FAFSA, the Department launched a social media campaign Monday, **“45 Minutes = Infinite Possibilities”**, that will run through May 12 in partnership with the LOSFA, Career Compass and the Louisiana Education Loan Authority.
- Parents and students will have access to financial aid and student resources via the Department’s Financial Aid Facebook page and Twitter (#45 minutes) as well as have targeted FAFSA completion dates at several schools.
- All resources released during the campaign will also be available on the [financial aid homepage](#).

Email ldefinancialaid@la.gov with questions.

ESSA

BESE Guidance

Last Wednesday, BESE directed the Department to prepare a draft of the state's ESSA plan for submission to the U.S. Department of Education no earlier than April 15, 2017.

The board further directed the Department to prepare by June 20, 2017, rules and regulations that would make the plan effective in Louisiana.

These steps allow Louisiana to seek federal input on its draft plan while conducting nearly three additional months of discussion on the actual changes to BESE "bulletins" that govern policies such as accountability and intervention.

Department staff will be meeting with superintendents, charter school leaders, and other administrators and advocates immediately and ongoing.

BESE Guidance

BESE also provided further guidance to the Department in developing its draft plan:

- awarding schools points for “basic” on LEAP and end of course tests, 18 on the ACT, and Silver on WorkKeys at a “C” level rather than the “D” level;
- lowering the school performance score (SPS) necessary to achieve an “A” in 2017-2018 and gradually raise the score over time until 2025;
- reporting school letter grade equivalents for student growth and student achievement separately, so that parents and the public can see them clearly and apart from one another;
- identifying schools with subgroups of students whose performance requires “urgent intervention” and reporting this distinction on school report cards;
- the three percent Title I allocation to Direct Student Services will be awarded to LEAs per the traditional Title I formula, with such funds targeted by the LEA for opportunities such as dual enrollment, AP and CLEP, tutoring services, Jump Start opportunities, JAG, and other courses and services not otherwise offered at the school;
- developing a menu of ways in which schools can demonstrate progress within the new Interests and Opportunities index, and convening school administrators in designing it;
- studying the effect of reducing or eliminating U.S. History and biology end of course assessments on student learning in order to make a final recommendations to the board at their June 20 meeting.

2016-2017 Action Steps

2016–2017 CIS and CVR End of Year Process

Compass end of year evaluations communicate educator effectiveness as measured by student outcomes and professional practice. The Curriculum Verification and Results (CVR) Reporting Portal provides a method for teachers of certain grades and subjects to verify their rosters to ensure the accurate reporting of transitional student growth data.

CIS and CVR End of Year Timeline (2016-2017 School Year):

- January-May: Employees (teachers, counselors and librarians) review observation data and feedback provided in CIS.
- January-August 15: Employees (teachers, counselors and librarians) report SLT results and principals rate SLTs.
- April 17-28: CVR roster verification period (view only)
- May 8-19: CVR roster verification period (open correction)
- August 15: Deadline for final evaluation ratings to be entered in CIS.

Please see the [CIS & CVR User Guide](#) for more information about CIS and CVR end-of-year processes.

Webinar on 2016–2017 CIS and CVR End of Year Processes

The Department is hosting a webinar to provide technical guidance for end of the year processes in the Compass Information System (CIS) and the CVR portal for school system administrators, supervisors, principals, and evaluators on the following dates and times.

Webinar Dates and Times:

- Tomorrow, April 6 at 1:00 p.m.
- April 11 at 1:00 p.m.

Webinar Link: <https://louisianaschools.adobeconnect.com/cis/>

Phone number: 1-855-240-2575

Meeting room number: Seminar Room Compass Information System 500; PIN Code 60265090

Please email compass@la.gov for more information.

Cohort Graduation Data Certification

Data certification for the 2015-2016 graduation cohort opened on Monday, April 3rd through Louisiana Data Review and will close on April 17.

At the same time, the Department is conducting exit code review audits for students transferring out of state (exit code 10), to a nonpublic school (exit code 14), or to a BESE-approved home study program (exit code 16).

Data Certification Action Steps:

- Schools should submit documentation for the selected students.
- All students without a home study application on file with the LDOE will be sent to districts and schools for audit.
- If appropriate documentation is not available for the student, then the student will be changed from a legitimate leaver to a non-graduate.

Detailed information about the exit code review audit process is included in the cohort graduation data certification supplemental guide that was sent to accountability contacts.

Accountability contacts received individual emails with login information and resources.

This will be the final opportunity to correct cohort graduation data used for the 2017 SPS. For questions, contact Jennifer.Baird@la.gov or assessment@la.gov.

Register for 2017 Jump Start Super Summer Institute

The 2017 Jump Start Super Summer Institute (SSI) offers certification training to secondary and postsecondary educators seeking to obtain initial, renewed, or advanced certifications in [Jump Start Statewide Industry Based Certifications](#). **Registration in [Coursewhere](#) closes this Friday, April 7.**

SSI Schedule:

- **Phase 1:** July 10–14 from 8:00am – 5:00pm, National EMS Academy - Lafayette, La
- **Phase 2:** July 17 – 21 from 8:00am – 5:00pm, Lafayette, LA
- **Micro-Enterprise Regional Core and Statewide** certification sessions are also being offered in Bossier, Lafayette and St. Tammany. Check Coursewhere for additional information.

The Department will pay training costs and provide lunch for secondary instructors attending SSI. School systems are responsible for travel expenses and a registration fee (\$249.00/instructor) for which Career Development Funds (CDF) or 2016-2017 Carl Perkins Funds may be used.

Please email JumpStart@la.gov with questions.

Spring 2017 AP[®] Exam Administration Updates

- The Department will provide an exam fee reimbursement for each 2017 Advanced Placement exam taken by any public school student who qualifies for the AP exam fee reduction.
- **To be eligible for a low-income test fee reimbursement, school test coordinators must code “option 1” on each qualifying student’s AP answer document.**
- The Department will reconcile all eligible exams as validated by the College Board and reimburse school systems in the fall of 2017 via an allocation and grant award notification.

Please email collegereadiness@la.gov with questions.

JAG-LA 2017-2018 Intent to Continue Grant

Recipients of the JAG-LA 2016-2017 Grant are eligible to apply for the [JAG-LA 2017-2018 Intent to Continue Grant](#).

- Continuation is contingent upon (1) verification that previous year's program requirements were met and (2) availability of funds.
- The grant application is available on the [JAG-LA webpage](#) on the Department's website and is **due to the Department prior to 4:00 p.m., Tuesday, April 25, 2017.**

Programs that do not intend to continue for 2017-2018 must provide written notification to the Department prior to April deadline above.

Please share this information with the current JAG-LA recipients.

For questions or additional information, please contact Dianna.Keller@la.gov .

2017-2018 Pupil Progression Plan Update

The **Pupil Progression Plan (PPP)** is the comprehensive plan developed and adopted by each school system that establishes policies and guidelines that local school districts use to determine whether students will be:

- promoted to the next grade,
- retained in the current grade, or
- advanced (or skipped) to higher grades.

The 2017-2018 PPP template will be released in June via the District Newsletter and on the Department's website in order to address any new legislation relative to promotion and student progression. As such, **the deadline for submission will be extended into mid-October.**

For more information on the 2017-2018 Pupil Progression Plan, please email your request to PPP@la.gov.

Call Summary

Call Summary

Month	Key Deadlines	Key Resources and Supports
April	<ul style="list-style-type: none"> ● TODAY: Rd 1 School Redesign grantees load budget info into eGMS ● April 7: Principal Support Grant due ● April 7: Register for Jump Start Super Summer Institute ● April 17: Deadline to submit data corrections for 2017 cohort graduation data and exit codes ● April 17-28: CVR roster verification period (view only) ● April 20: Registration for the 2017 Teacher Leader Summit opens ● April 25: Deadline to submit JAG-LA intent to continue grant ● April 28: Believe and Prepare PRF applications due ● April 30: Submit comment on the IDEA application 	<ul style="list-style-type: none"> ● April 6: Data Coordinator monthly call ● April 6 and 11: CVR Roster Verification Webinar ● April 12: DTC monthly call ● April 13: Special Education Leader Monthly Webinar ● April 19: TL Summit webinar @ 1pm ● April 25 & 27: LEAP 360 Interim preview webinar
May	<ul style="list-style-type: none"> ● May 8-19: CVR roster verification period (open correction) ● May 15: Registration for TL Summit closes 	<ul style="list-style-type: none"> ● May 2: DTC Call ● May 3: Superintendent and District Planning Calls ● May 4: Data Manager Call ● May 11: Special Education Leader call ● May 18: Ed Tech monthly call