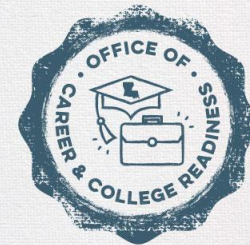


LOUISIANA DEPARTMENT OF EDUCATION

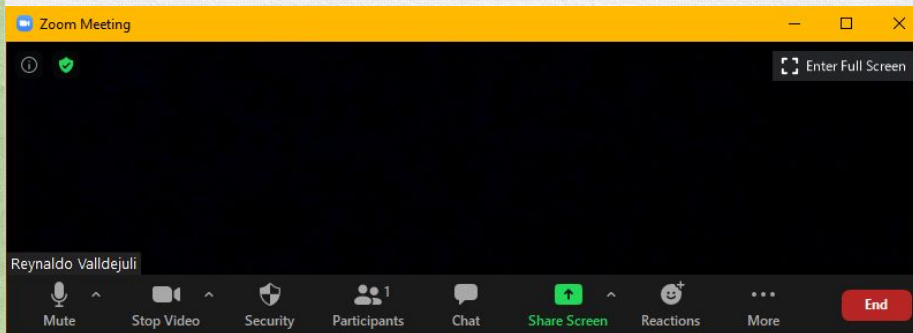


Office of Career & College Readiness Monthly Call

July 28, 2022

Zoom Meeting Preparation

- Please make sure your phone or computer is muted to minimize background noise.
 - To do this, hover over the bottom left-hand side of your screen and click “Mute.”
- Please make sure you have turned off your camera to save bandwidth and prevent any connectivity issues.
 - To do this, hover over the bottom left-hand side of your screen and click “Stop Video.”
- Please submit questions during the presentation in the “Chat” function located on the bottom of your screen.



NOTICE: In accordance with the Americans with Disabilities Act, if you need special assistance at this meeting please contact Idoecommunications@la.gov.

Office of Career and College Readiness

FOUNDATIONAL SKILLS

- Freshmen Academies, Transitional 9th Grade, Counselor Institutes, Professional School Counselor liaison, Individual Graduation Plan, High School Planning Guides, Counselor Newsletter, Pupil Progression Plans, Direct Student Services, Child Welfare and Attendance, Alternative Education

POST-SECONDARY READINESS

- Fast Forward, Extension Academy, Diploma Orders, Community Service Diploma Endorsement, April Dunn Jump Start Pathways, Financial Aid Planning, Gifted and Talented Programming, Student of the Year, U.S. Senate Youth Program, Credit Recovery, Course Codes, Proficiency Exams, Transcripts

QUALITY DIPLOMAS

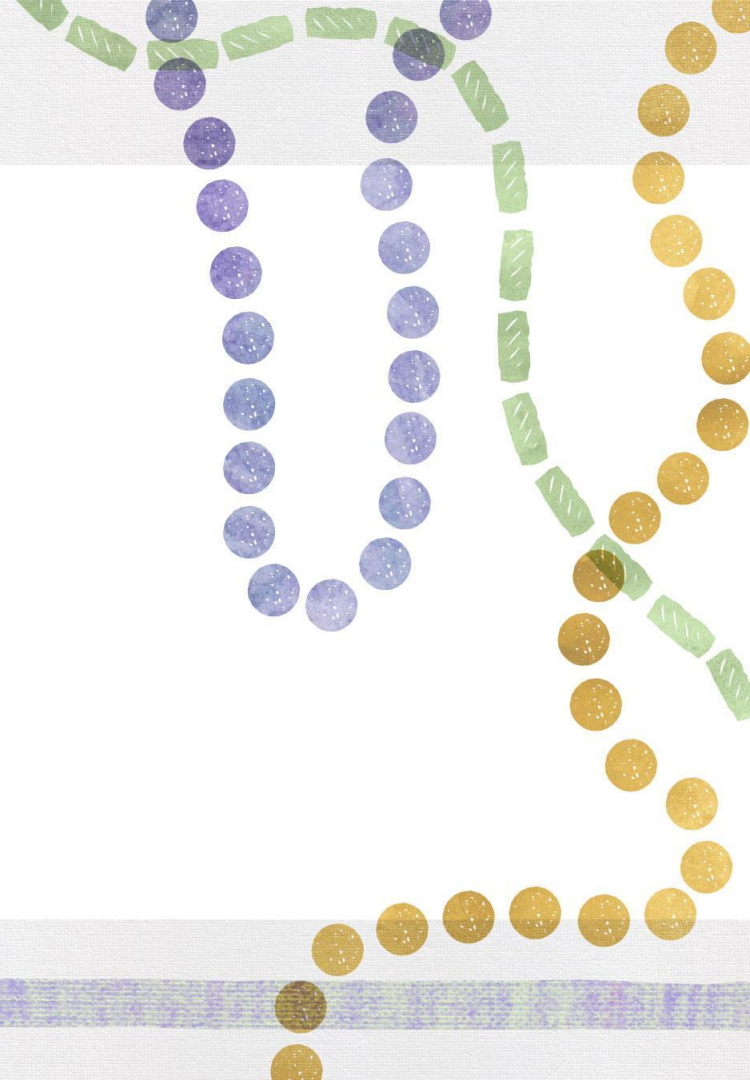
- Jump Start, Jump Start Convention, Jump Start Summers, Super Summer Institute, CTTIE, Career Development Fund, Quest for Success, Supplemental Course Academy, U.S. Presidential Scholar, Advanced Coursework: AP, Dual Enrollment, IB and CLEP Testing, Graduation Requirements

WELL-BEING/HEALTHY COMMUNITIES

- Educator and Student Well-Being, Urgent Intervention Required - Discipline (UIR-D), AWARE grants, Trauma, School Social Work, School Health Profiles, PBIS, Health & PE, Transportation, Nursing, School-Based Medicaid, Suicide Prevention, Bullying & Prevention



Foundational Skills



Child Welfare and Attendance

A webinar for Child Welfare and Attendance (CWA) directors, supervisors, and attendance stakeholders is held the first Wednesday of each month where evidence-based best practices focusing on student attendance is discussed.

Date and Time: Wednesday, August 3, 2022; 8 a.m.

Webinar Link: <https://ldoe.zoom.us/j/98929998429>

Phone Number: 312-626-6799

Meeting ID: 989 2999 8429

Passcode: CWALAA

The updated [CWA Reference Guide](#) is now available.

Contact shelneka.adams@la.gov with questions.

Dropout Early Warning System (DEWS)

Dropout Early Warning System (DEWS) is a program utilized by school systems to identify students at risk before they become at risk.

DEWS programs that are data driven provide information to educators so they are equipped to intervene with the greatest area(s) of need of the student before dropping out is an option.

UNICEF has developed a comprehensive [resource](#) on DEWS.

To learn more about implementing or how to your school system can utilize Dropout Early Warning Systems please contact rayla.hunt@la.gov.

Transitional 9th Grade

Prior to the 2014-15 school year, nearly 40% of Louisiana students retained in the 8th grade never entered high school. In response, the Louisiana Department of Education (LDE) developed [Transitional 9th Grade](#) (T9) to allow students who would have been retained in 8th grade to move to a high school campus and receive targeted academic remediation.

By identifying and serving T9 students, middle and high schools can drastically decrease dropout rates and dramatically improve life outcomes for Louisiana's most vulnerable students.

Please email rayla.hunt@la.gov with questions

Alternative Education

Louisiana Alternative Education (AE) sites exist to ensure that all Louisiana school children have equitable access to education services and supports that best meet the needs of the individual student. The status of an AE site is determined by the delivery of [Bulletin 131](#) criteria which includes:

- Transitional planning and support
- Counseling and mental health supports
- Staff professional development
- Identified behavioral interventions
- Identified academic interventions and graduation pathways
- An annual climate survey

Alternative Education Community of Practice (COP)

A webinar for Alternative Education Supervisors and Site Leaders is held the **first Wednesday of each month** and focuses on supporting AE sites leaders with the delivery of criteria outlined in [Bulletin 131](#).

Date and Time: Wednesday, August 3, 2022; 10 a.m.

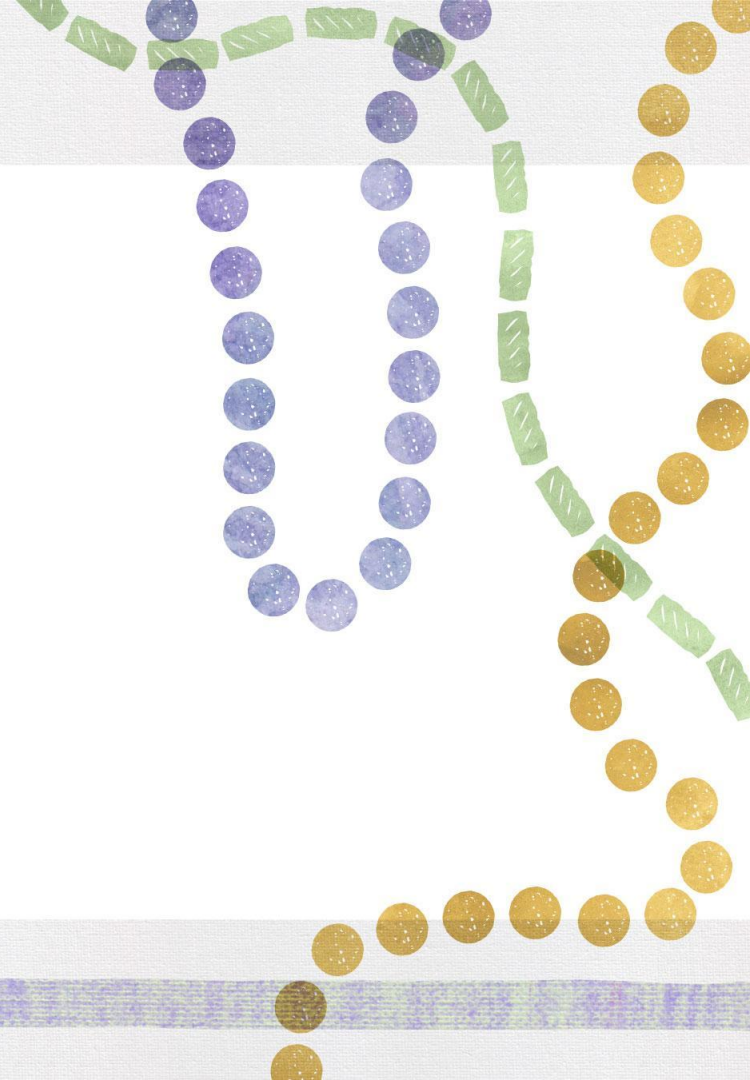
Webinar Link: <https://ldoe.zoom.us/j/95978637476>

Meeting ID: 959 7863 7476

Passcode: 775578

Contact terran.perry@la.gov with questions.

Postsecondary Readiness



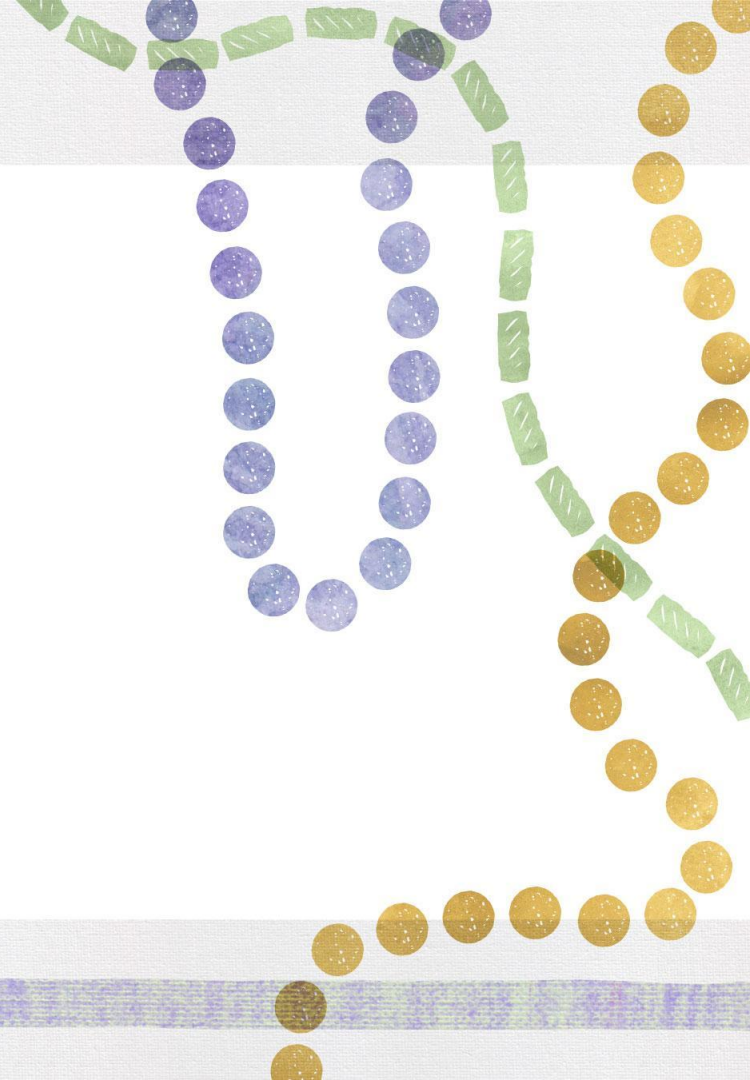
Financial Aid Planning

Louisiana is number one in the nation with the most FAFSAs completed by students currently at 67%.

Thanks for all the hard work put in to ensure students have the funding they need to pursue their postsecondary goals.

For assistance with financial aid planning, please contact ldefinacialaid@la.gov.

Quality Diplomas



Career Development Fund End of Year Reporting

The [2021-2022 Career Development Fund \(CDF\) End of Year Expenditure Report](#) is available for school systems to complete. The deadline to report on 2021-2022 CDF expenditures is August 31. School systems should reference the [2021-2022 Guidelines for Use of CDF Allocation](#) when completing the form.

CDF funds support increased student access to high-value Career and Technical Education courses and training. CDF funds are 6% of the MFP State and Local Base Cost Per Pupil (\$241) provided for each qualifying student course enrollment in grades 9 through 12.

Please contact troy.borne@la.gov with questions.

Jump Start 2.0 Enhancement Portal

The [Jump Start 2.0 Enhancement Portal](#) is open for requests for the 2023-2024 school year.

Requests for additions to Jump Start are reviewed annually.

The 2023-2024 submission deadline is **November 1, 2022**.

Contact jumpstart@la.gov with questions.

College Board Counselor Workshop

The College Board will be hosting [2022 Counselor Workshop](#). [Registration](#) is open for the workshops on August 30th and for September 7th. Topics for the workshops will include College Board program updates including SAT, AP, and higher education trends to support students for the 2022-23 school year.

All workshops are free and all attendees are eligible for CEU credit or credit toward your professional certification.

Please contact charmaine.cureton@la.gov with any questions.

ACT[®] College and Career Readiness Workshops

ACT[®] will be hosting [College and Career Readiness Workshops](#). [Registration](#) for in-person workshops that offer content specific to Louisiana is open.

In-person workshops are at 9am at the following locations:

- September 27, 2022 at University of New Orleans in New Orleans, LA
- September 29, 2022 at the Louisiana Department of Education Claiborne Building in Baton Rouge, LA
- October 4, 2022 at University of Louisiana at Lafayette in Lafayette, LA.

[Registration](#) is also open for National and Product-Specific webinars, such as ACT[®] Test Prep, PreACT[®], and ACT[®] WorkKeys[®]. If you are unable to attend, recordings will be available after the live event for those who registered.

Please contact charmaine.cureton@la.gov for more information.

TOPS Tech Early Start Provider Application

The [TOPS Tech Early Start award](#) provides up to \$600 per academic year for any eligible 11th or 12th grade student attending a Louisiana PUBLIC high school who wishes to concurrently enroll for up to six credit hours per semester in order to pursue certification in an Eligible Program at a public or nonpublic college or an approved training provider.

The TOPS Tech Early Start Training Provider Application for 2023-2024 school year is open and will close on **November 1, 2023**.

Please contact tiffany.thomas@la.gov with questions.

BOR/BESE Updates

[TOPS University Diploma Requirements and TOPS Weighted GPA Grid](#) have been updated to reflect recent updates from June 2022 BESE to include Psychology: DE – CPSY 2013 Intro to Psychology.

Jump Start updates will be posted to the LDOE website in the coming days. The updated pathways will reflect recommendations made by CTE supervisors and approved by the Jump Start 2.0 Review Committee and BESE at the June meeting.

Contact jessica.vallelungo@la.gov with questions.

Supplemental Course Allocation (SCA)

Please join us on August 17 as we provide an overview of the SCA program and specific details on using the SCA portal.

Date and Time: Wednesday, August 17, 2022; 10 a.m.

Link: <https://ldoe.zoom.us/j/94451152407>

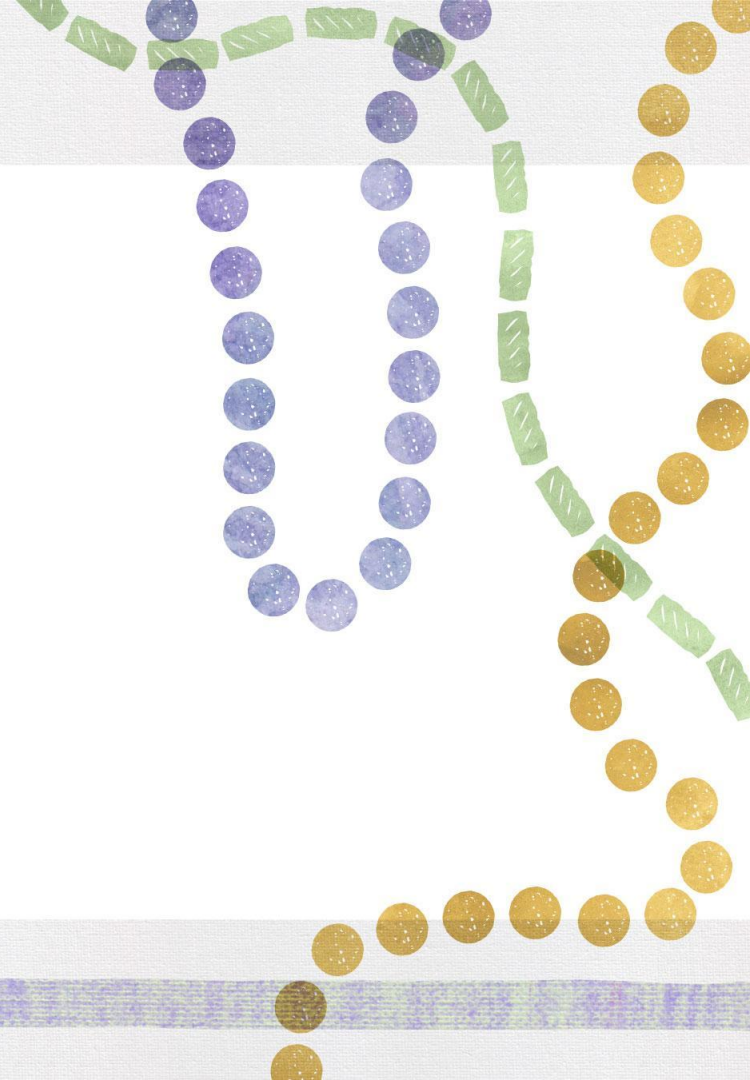
Phone Number: 312-626-6799

Meeting ID: 944 5115 2407

Passcode: courses

Contact sca@la.gov with questions.

Well-Being



Adverse Childhood Experiences Training Guidance

Louisiana [R.S. 17.437.2](#) requires at least one hour of annual in-service training on recognizing [Adverse Childhood Experiences](#) (ACE's) and the utilization of trauma-informed education.

The Louisiana Department of Health, in partnership with the Louisiana Child Welfare Training Academy, created a [training](#) for school systems to utilize in providing this training to educators.

Please contact byron.hurst@la.gov with questions.

Ochsner Telehealth for Educators

Convenient & Free Virtual Therapy Visits



- [Ochsner Telehealth Guidance](#)
- [Free Virtual Sessions](#)
- Create an account using **Key Code: LDOE**
- On appointment day, use **Coupon Code: TEACH**
- [FAQs](#)

Please contact rachel.bunch@la.gov with questions.

Transition to 988 Suicide and Crisis Lifeline

What is 988?

- 3-digit code for the Suicide & Crisis Lifeline
- 988 should be placed on Student ID's

Goal

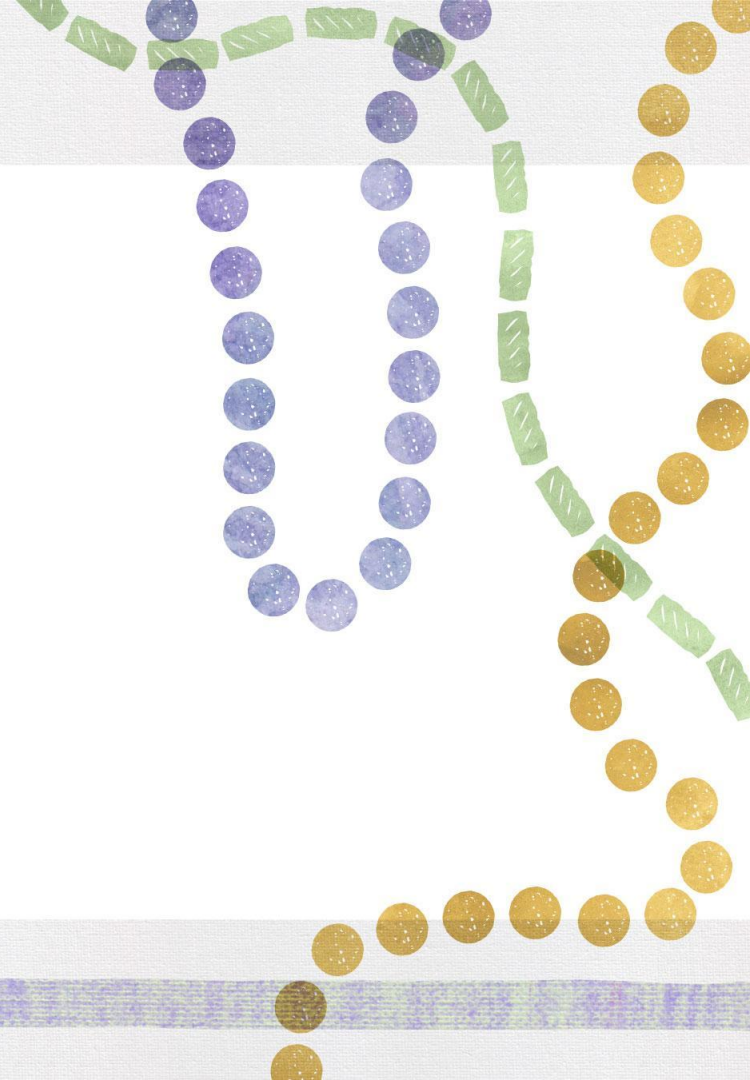
- Provide immediate, confidential counseling
- De-escalate suicidal or distressed thoughts
- Connect people to local resources

Please contact rachel.bunch@la.gov with questions.

Levillia Moore, LMSW

- 16 years of combined clinical experience in social services and behavioral/mental health with children, youth, and families
- Liaison for school systems
- Support Advancing Wellness and Resiliency in Education (AWARE 2) and School Social Work Expansion (SSWx) grant systems

Healthy Communities



School Safety

The [Emergency Preparedness and Recovery web page](#) on the Department's website provides resources related to safety and care of student during emergencies.

Louisiana Revised Statute 17:416.16 ([RS 17:416.16](#)) requires each public school principal to prepare a school crisis management and response plan jointly with local law enforcement, fire, public safety, and emergency preparedness officials.

The Department has partnered with LSU's National Center for Biomedical Research and Training/Academy of Counter-Terrorist Education to assist schools with the development of Emergency Operations Plans. Visit [Grants to States for School Emergency Management](#) to learn more.

Please contact michael.comeaux@la.gov with questions.

Register Now!



SCHOOL
SAFETY
SUMMIT

AUGUST 4, 2022

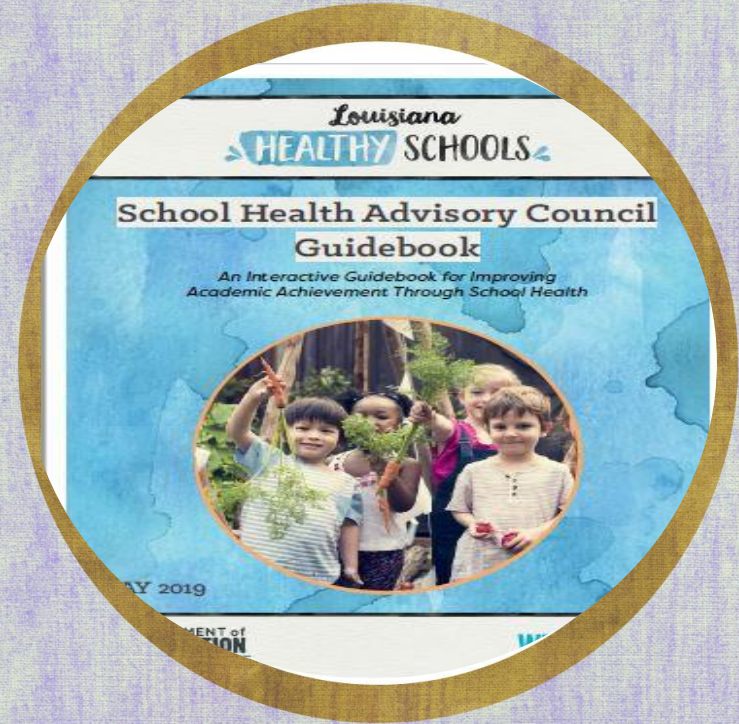


RAISING CANE'S RIVER CENTER | BATON ROUGE, LA

Well-Being Advisory Councils

Louisiana Revised Statute 17:17:1

*Each city, parish, and other local public school board shall establish a **school health advisory council** to advise the board on **physical activity for students, physical and health education, nutrition, and overall student health**. The council may advise the board on issues relative to compliance with school vending machine restrictions, use of physical fitness assessment results, and school recess policies. The council members shall be appointed by the school board and shall include parents of students and individuals representing the community.*

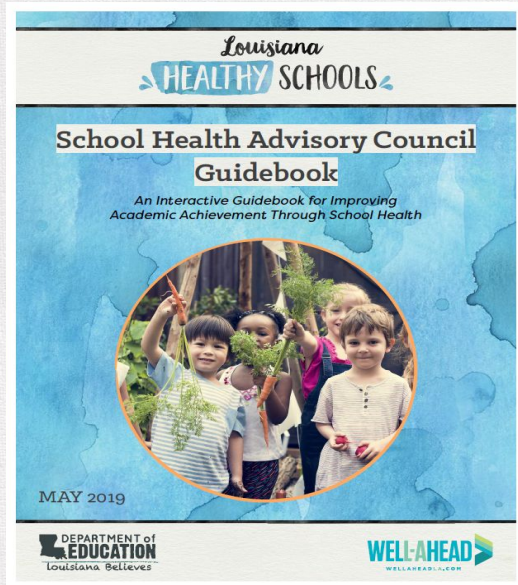


Local School Wellness Policy

- A written document that guides a school systems efforts to create healthy and supportive environments that promote student wellness. Applies to each school under its jurisdiction.
- Required for any school systems participating in federal Child Nutrition Programs, including National School Lunch Program or School Breakfast Program (Healthy, Hunger-Free Kids Act of 2010).
- WSCC model for school health can be integrated into the local school wellness policy and can help put into action several provisions of the Every Student Success Act.



Support from the Department



- [School Health Advisory Council Guidebook](#) helps with the creation of:
 - Active and effective District Health Advisory Councils
 - School Wellness Committees that support student and staff wellness initiatives in alignment with the local school wellness policy

Contact healthyschools@la.gov with questions.

Medicaid Funding for School Health Services

Schools are eligible to receive Medicaid funds for specific school health services.

LDOE provides support to school districts to understand requirements and implement documentation and claiming via:

- Learning collaboratives
- Monthly webinar updates
- Resource library
- Onsite consultation

Contact elizabeth.duncan@la.gov to learn more about our resources.

School Based Medicaid Monthly Webinars

Beginning **August 16**, monthly webinars for Medicaid for school based Medicaid coordinators, special education directors and school business managers will be provided. Coordinators of nursing, behavior health and therapy services are also encouraged to attend.

Webinar Date and Time: August 16; 2:30 p.m. - 3:30 p.m.

Webinar Link: <https://ldoe.zoom.us/j/93019253034>

Webinar Phone Number: 1-312-626-6799 or +1-470-250-9358

Meeting ID: 930 1925 3034

Please contact elizabeth.duncan@la.gov with questions.

Helpful Information

Schedules, access links and information for the Department's webinars can be found in the [LDOE Weekly Newsletter](#) and [School System Support Calendar](#). Please reach out to the following contacts with questions:



highschoolacademics@la.gov	General questions about the office and about graduation requirements
ldefinancialaid@la.gov	Questions related to the financial aid policy or for assistance with FAFSA completion
sca@la.gov	Questions related to Supplemental Course Academy/Course Choice
jumpstart@la.gov	Questions related to Jump Start

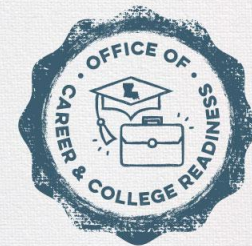
Helpful Information

Schedules, access links and information for the Department's webinars can be found in the [LDOE Weekly Newsletter](#) and [School System Support Calendar](#). Please reach out to the following contacts with questions:



ppp@la.gov	Questions related to pupil progression
healthyschools@la.gov	Questions related to Healthy Communities/Medicaid/School Safety
transcripts@la.gov	Questions about duplicate transcripts
studentwellbeing@la.gov	Questions about student well-being, mental health resources

LOUISIANA DEPARTMENT OF EDUCATION



**Next Office of Career &
College Readiness Monthly**

Call:

August 25, 2022
