



Early Childhood Lead Agency Collaboration December 2016 – Session 2

CLASS™ Calibration

The Importance of Accuracy in the Local Observation Process

Agenda

- State approach
- State-level Learning Year substitution results
- Lead Agency shadow scoring and calibration requirements
- Lead Agency reports on shadow scoring and calibration efforts
- State-level preliminary observation accuracy reports for fall
- Lead Agencies will reflect on what they have heard and what they will do differently for the spring observation period.

One of the takeaways from the Learning Year is that there is an opportunity to improve the accuracy of local observations.

Obtaining Reliable Observation Data

Louisiana's Local Approach

Local observation systems benefit programs by building capacity among site leaders to understand and support quality teacher/child interactions.

Why Use Local Observers?

- ✓ Local leaders have demonstrated their ability to conduct valid, reliable *CLASS™* observations.
- ✓ Programs need information throughout the year to provide the best supports to teachers.
- ✓ Communities build capacity for *CLASS™* observations, feedback and coaching.

Why Use Third Party Observers?

- ✓ Using a third party provides a consistent statewide audit and reduces risk of conflict of interest and bias.

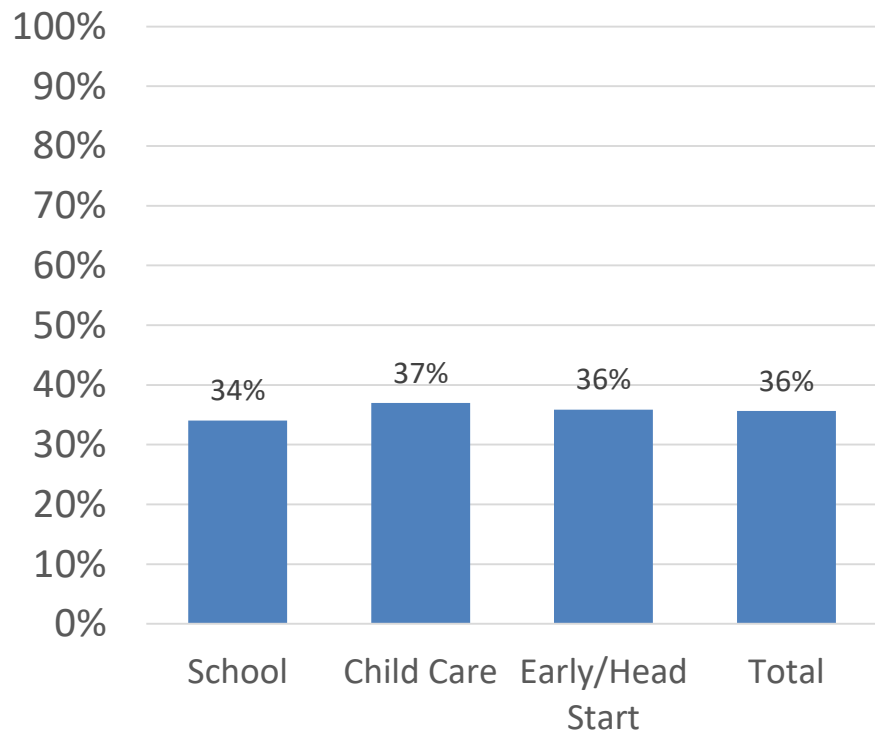
When are Third Party Scores Used?

- ✓ Third party domain scores replace local domain scores when domain scores differ by more than one point for observations in the same classroom in the same semester.
- ✓ Third party scores are used if available when local scores are not available.

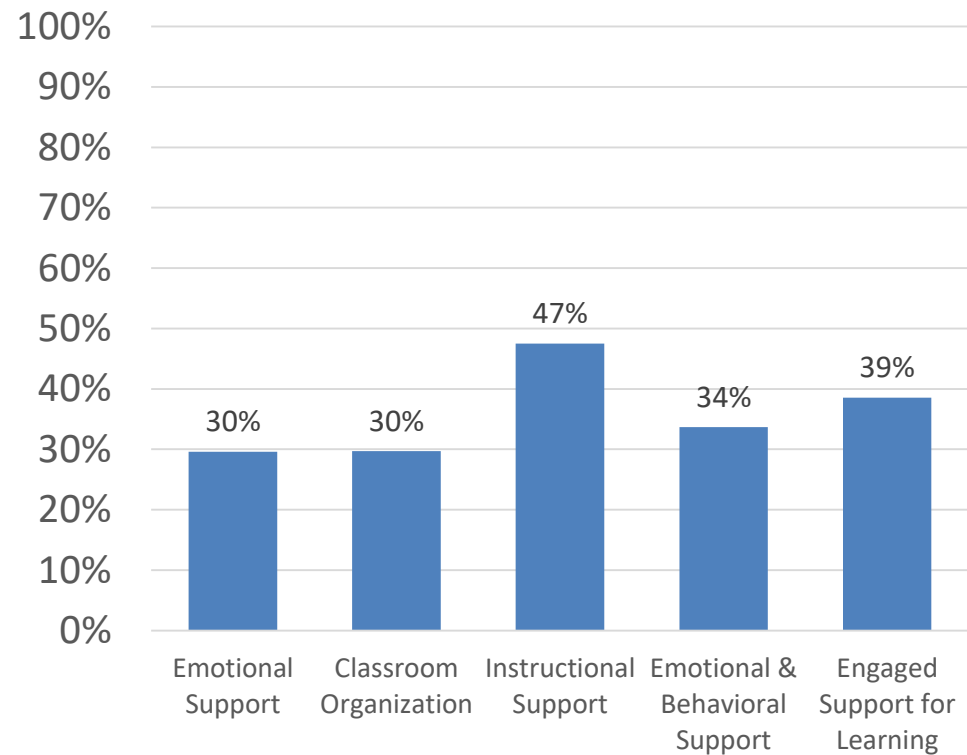
2015-2016 Learning Year Accuracy Programs and Domains

Third Party replacement rates were consistent across program types but varied by domain.

Overall Replacement Rate



Replacement Rate by Domain



Lead Agency Requirements to Ensure Observer Accuracy

Lead Agencies must ensure that local observations are accurate.

- Shadow score a minimum of 10% of fall observations and 10% of spring observations
- Ensure that every local observer is shadow scored at least once
- Develop and implement a written process to monitor and compare the results of all local observers for the purpose of ensuring accurate observations
- Conduct a minimum of one observation calibration activity each semester and ensure that all observers participate in at least one observation calibration activity each semester

According to current (preliminary) data, 65% of local observers are achieving at least 50% reliability, and 30% are 100% reliable this fall.

Lead Agency Reports

Lead Agency Reports

Questions to Answer

Calibration

- What did you do for the fall calibration activity?
- When (what month) did you conduct it?
- What did you learn about your observers by doing this?
- Have you planned follow up support for your observers?

Shadow Scoring

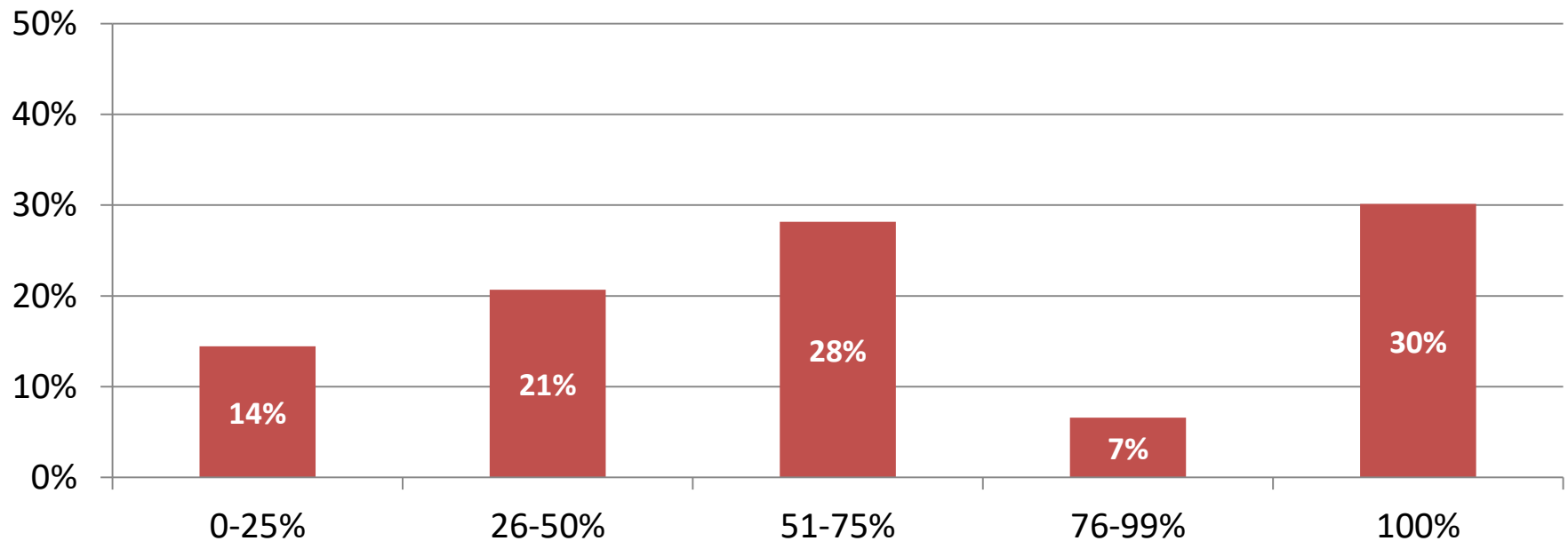
- How many classrooms are in your network and how many observers are you using?
- How many shadow scorers do you use?
- What is your approach to shadow scoring? – designated shadow scorers, all observers shadow, etc.
- What is your shadow scoring target – 10%, more?

Local Observer Reliability

Fall 2016 - Preliminary

Lead Agencies must ensure that local observations are accurate.

Local Observer Accuracy Percentages



Observer accuracy reports are available for each Lead Agency via the Department CLASS Portal.

Next Steps for the Department and Lead Agencies

Bulletin 140 outlines specific interventions for local observers who are unreliable.

After the fall observation period, the Department will send letters to local observers and Lead Agencies based on final accuracy percentages:

- For observers who are less than 80% reliable, the Department will issue a written notice warning the lead agency and observer about potential accuracy concerns
- For observers who are less than 66% reliable, the notice will also require that the observer be shadow scored by another observer in the spring
- For observers who are less than 50% reliable, the Department will additionally add to the notice that these observers may not be allowed to observe next fall if their accuracy does not improve in the spring

Lead Agencies can access observer reliability reports at any time through the CLASS portal, and should use this report to inform their calibration activities.

Closing Questions