

Louisiana Believes

**District Planning Call
December 7, 2016**

Agenda

I. Teaching and Learning

- A. Educator Support
- B. Standards
- C. Educator Recognition

II. Measuring Student Success

- A. LEAP 360
- B. LEAP 2025 Assessment Administration
- C. 2016 Accountability Releases
- D. School Redesign Summit

III. Early Childhood

- A. Early Childhood Milestones

IV. Graduation Pathways

- A. Jump Start Convention
- B. Financial Aid Support

The LDOE recommends the following supervisors attend this call:

- Curriculum and Instruction
- District Test Coordinators
- Accountability
- Technology
- Early Childhood
- High School
- Career and Technical Education
- Principal and Teacher Leader
- Human Resources

The background of the slide is a watercolor-style wash of light blue and white. The colors are blended together, creating a soft, ethereal effect. The blue is more prominent on the left and right sides, while the white is in the center. The overall texture is painterly and artistic.

Teaching and Learning: Educator Support

December Supervisor & Principal Collaborations

The December Supervisor and Principal Collaborations will take place in the following dates and locations:

| Date | Time | Address |
|-------------------|-------------------------------|---|
| Friday, Dec. 9 | Supervisor: 8:00-11:50 | Claiborne Building, Baton Rouge |
| Monday, Dec. 12 | | Jefferson Parish School Board Building, Harvey |
| Tuesday, Dec. 13 | Principal: 12:00-4:20 | Bayou Church, Lafayette |
| Thursday, Dec. 15 | | Trinity United Methodist Church, Ruston |

Action Step: Educators who are interested in attending the December [Supervisor](#) and/or [Principal](#) Collaborations **should register in Cousewhere by the end of the day TODAY.**

Contact DistrictSupport@la.gov with questions about the December Supervisor and Principal Collaborations.

December Supervisor Collaboration Sessions

- Accountability
 - ESSA Framework
 - Using Principal Profiles in Professional Learning Communities
 - New Accountability Contacts and Online Data Certification Overview
- Curriculum, Instruction & Professional Development
 - Am I Doing This Right? Curriculum Implementation, part 2
 - Helping Your Teachers Implement the Shifts in Social Studies Instruction
- Early Childhood
 - Practice Performance Profiles – Supporting Understanding and Action after the Roll Out
 - CLASS Calibration – The Importance of Accuracy in the Local Observation Process
 - Instructional Leadership – Collaborating to Align PreK and K
- Believe & Prepare
 - Believe and Prepare Transition Support for 2017 and Regional Workforce Reports
- Special Populations
 - Special Education Law Primer
 - Recognizing Success in ELL Education: Pathway to Fluency

Please refer to the [Supervisor Collaboration overview](#) for more information about this event including details about each session and instructions on how to register.

December Principal Collaboration Sessions

- Accountability
 - ESSA Framework
 - Using Principal Profiles in Professional Learning Communities
- Principal Support
 - Key Actions of Engagement for Effective Instructional Leadership
 - Principals Achieving Success Through Visionary Thinking
- Curriculum, Instruction & Professional Development
 - Am I Doing This Right? Curriculum Implementation, parts 1 and 2
 - Making Connections: Assessment Guides and Instruction
 - Helping Your Teachers Implement the Shifts in Social Studies Instruction
- Early Childhood
 - Fostering Collaboration to Align PreK and Kindergarten – A Job Only a Principal Could Love
- Believe & Prepare
 - Believe and Prepare: A School Leader's Perspective
- Special Populations
 - Recognizing Success in ELL Education: Pathway to Fluency

Please refer to the [Principal Collaboration overview](#) for more information about this event including details about each session and instructions on how to register.



Virtual December Teacher Leader Collaboration

In response to feedback from Teacher Leaders, the December Teacher Leader Collaboration will be delivered in a webinar format to provide support to Teacher Leaders while minimizing time away from the classroom.

The December virtual webinars for Teacher Leaders will focus on the following topics:

- 2016-2017 Assessment Guides
- Math resources
- Science Standards Review

Reference the [December Virtual Teacher Leader Collaboration overview](#) for more information about each of these webinars including when they will be offered and how to access them. Registration not required.

Action Step: Please encourage your Teacher Leaders to attend one or more of these webinars.

Reach out to louisianateacherleaders@la.gov with questions related to the Teacher Leader Collaboration events.

TAP/NIET Best Practices Field Trip Opportunities

As a part of ongoing efforts to support principals in their work to improve teaching and learning, the Department will be offering opportunities to see firsthand the powerful principles of the TAP System and NIET Best Practices.

These [field trips](#) are designed to provide opportunities for existing TAP/BPC districts, as well as prospective district and school educators to observe the various processes and structures of TAP and NIET Best Practices in a school setting – to learn by seeing them in action!

Remaining Field Trip Dates:

- **December 8:** D.F. Huddle Elementary, Rapides
- **December 13:** Lowery Elementary, Ascension
- **December 14:** G.W. Carver Elementary, Ascension

Action Step: Register for the remaining [TAP/NIET Best Practices Field Trip Opportunities \(fall 2016\)](#).

For additional information and/or to register for a field trip, contact nicole.honore@la.gov.

Believe and Prepare Transition Support and Funding

By July 2018, all teacher preparation programs in Louisiana will include a yearlong classroom residency alongside an experienced mentor teacher, and a competency-based design.

To support these shifts, funding is available for transition costs, including:

- Stipends for yearlong undergraduate residents (\$2,000 per resident)
- Stipends (\$1,000 per mentor) and training for cooperating mentor teachers
- University coordinators
- Partnership and preparation program design support from teacher preparation experts

One hundred percent of eligible teacher preparation providers have requested and will receive funds to support this transition.

Action Step: Districts should continue collaborating with preparation providers to develop and expand yearlong classroom teaching residencies.

For detailed information see the [Teacher Preparation Transition Guide](#) or email believeandprepare@la.gov with questions.

Regional Educator Workforce Report

The Regional Educator Workforce Reports are now available in the Educator Workforce library [here](#).

These regional reports build upon the district workforce reports by providing a field of data at the regional and state levels. These reports will support district leaders in analyzing educator workforce trends relative to teacher recruitment and hiring, certification status, effectiveness, and departures.

The Regional Educator Workforce Reports were released at the fall Believe and Prepare community meeting and will be discussed again during the December regional supervisors' collaboration.

Action Step: Districts may use these reports to gain a clearer understanding of regional workforce trends, and to discuss those trends with preparation partners.

Email Sara.Strickland@LA.gov with any questions.

Teaching and Learning: Standards

Science Standards Review Update

The Louisiana Student Standards for Science are [posted for public comment](#) now through **January 6, 2017**.

- To date, workgroup members have each spent an average of 70+ hours meeting in person as groups and 15+ more independently researching and reviewing drafts of standards to achieve this ambitious task. This translates to over 4,000 hours combined.
- Parents, educators, and the general public are encouraged to provide feedback the draft standards.
- The Louisiana Student Standards for Science are scheduled to be submitted to BESE for approval in March 2017.

Action Step: Ensure at least 80% of the science teachers in your district and at least 10% of parents share feedback on the proposed science standards through the public comment portal or by emailing louisianastandards@la.gov.

Louisiana Connectors for Students with Significant Disabilities and English Language Learners

During the December meetings this week, BESE will review and vote to approve revisions to [Bulletin 127](#) (Louisiana Connectors for Students with Significant Disabilities) and [Bulletin 112](#) (Louisiana Connectors for English Language Learners).

Transition and Implementation Next Steps:

| Time | Key Engagement |
|---|---|
| Spring 2017 | Provide detailed guidance documents to help educators understand the new expectations |
| Spring – Summer 2017 | Provide instructional resources for Math and English language arts for educators |
| January and March 2017 Supervisor Collaborations | Provide initial training for school system leaders |
| June Teacher Leader Summit and ongoing | Provide training on the new expectations and released resources for teachers |

The background of the slide is a watercolor-style wash of light blue and white. The colors are blended and textured, with darker blue areas on the left and right sides, and a lighter, almost white center. The overall effect is soft and artistic.

Teaching and Learning: Educator Recognition

Louisiana's Teacher and Principal of the Year Programs

The Teacher and Principal of the Year programs are an opportunity to acknowledge educators who are making exceptional gains with students in your district.

This year, for the first time, teachers, principals, parents, and community members submitted recommendations for Louisiana's Teacher and Principal of the Year. Hundreds of recommendations were received and have been sent to each LEA for consideration.

LEAs are now selecting up to three overall teacher and principal of the year finalists – one per division (elementary, middle and high) – to move on to the state competition.

Semi-finalists will be selected and interviewed in the spring.

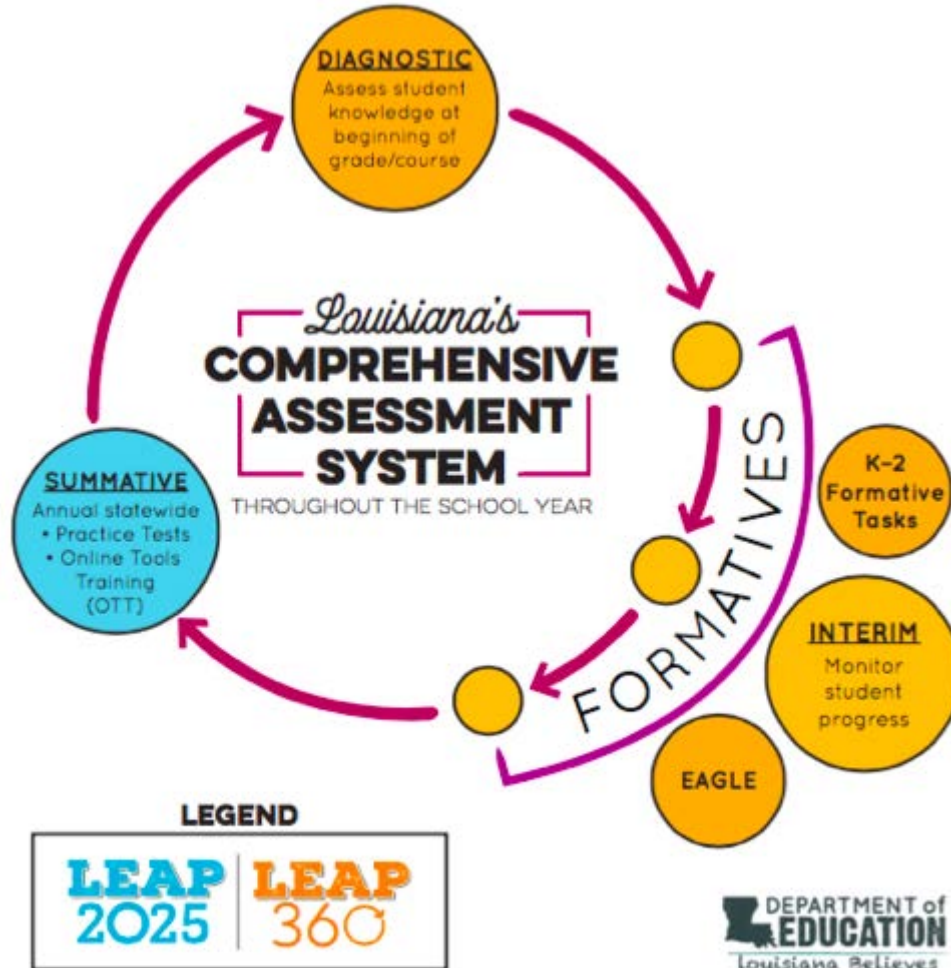
Action Step: School systems should submit state-level applications by **January 19, 2017**.

Email questions to excellenteducators@la.gov.



Measuring Student Success: LEAP 360

LEAP 360



LEAP 360

The non-summative assessments include:

| Resource | Purpose | Timeline |
|--|---|---|
| Classroom Formative EAGLE 2.0 | Aid and enhance student learning throughout the year | Available now! |
| K-2 Formative Tasks | Observe and collect information about young students | Available now! |
| Interim Assessments (ELA and math) | Monitor student progress throughout the year | Grades 3-8 Available later winter |
| Diagnostic Assessments (ELA and math) | Assess student knowledge at beginning of grade/course | Prior to back-to-school 2017 |



Louisiana's Assessment System: LEAP 2025 Assessments

December Assessment Month-by-Month Checklist

Communication and Support

- Dec: [Office hours](#) held every Tuesday

Assessment Preparation and Administration Action Steps:

- LEAP Practice Test test setup available in eDIRECT
- Nov–Feb 17: Submit ACT approved accommodations in the Test Accessibility and Accommodations (TAA) System
- Nov 14–May 12: WorkKeys online test administration window
- Nov 28–Dec 16: Administer EOC Fall 2016 tests
- Dec 5: Submit fall TRT device and network data

Grades 3-4 LEAP Computer-Based/ Paper-Based Options for Testing

Districts can choose to administer LEAP Grades 3-4 ELA, Mathematics, and Social Studies testing as a computer-based or paper-based assessment.

DTCs will select the online or paper option for each site and grade under the Materials tab in eDIRECT from December 22, 2016 - January 17, 2017. See table below for options for grades 3-4.

| Options | Description | Allowable |
|---------------------------------------|---|-----------|
| District Options (grades 3-4 only) | All schools paper-based | Yes |
| | All schools computer-based | Yes |
| | Some schools all PBT and some schools all CBT | Yes |
| School Options (grades 3-4 only) | One or more grades at school use CBT while other grades use PBT | Yes |
| | One or more grades by class use CBT while other classes use PBT | No |
| Grade Level (grades 3-4 only) | District-wide | Yes |
| | School-by-school | Yes |
| | Class-by-class | No |

The Department will work with LEAs individually in the coming months to determine technology readiness and best path forward. Email assessment@la.gov with questions.



Social Studies Assessment Overview

This spring, Louisiana will administer new assessments that are fully aligned to the Louisiana Student Standards for [social studies](#). These assessments were built and field-tested with input from Louisiana educators.

Specifically these new assessments:

- Like the standards, ask students to know essential social studies concepts captured by the [key themes](#). The questions ask students to make connections among the content of the [social studies grade-level expectations](#) rather than memorize basic facts.
- Are more easily administered with a more robust set of resources.
- Are grade specific, ending the practice of cumulative grade 4 and 8 assessments that ask teachers to teach a large scope of content in one year and thus shortening the assessments in those grades.
- Include educators at every step of the development--including standards and assessment design, question review, and scoring decisions.

Social Studies Assessment Overview: Test Length

As a part of its commitment to reduce testing, Louisiana will not take more than 2% of student instructional time for state summative assessments. The new social studies LEAP exams hold to this commitment.

The number of questions on the new assessments compares to the previous tests, keeping the assessment similar in length.

| Grade | 2014-2015 Old LEAP/iLEAP | 2016-2017 New LEAP |
|---------------------------------------|---|---|
| Grade 3 | 34 questions 1 extended response | 44 questions + 2 short responses 1 extended response |
| Grade 4 | 54 questions 2 constructed response 1 extended response | 45 questions 2 short constructed response 1 extended response |
| Grade 5 | 44 questions 1 extended response | 43-46 questions + 2 short responses 1 extended response |
| Grade 6 | 44 questions 1 extended response | 50-53 questions + 2 short responses 1 extended response |
| Grade 7 | 44 questions 1 extended response | 50-53 questions + 2 short responses 1 extended response |
| Grade 8 | 64 questions 2 constructed response 1 extended response | 50-53 questions 2 short responses 1 extended response |
| United States History (End-of-Course) | 2016-2017 EOC 4 achievement levels | 2017-2018 EOC 5 achievement levels Tentative design |

Social Studies Assessment Overview: Reading Levels

The new assessments fully measure the scope of the Louisiana Student Standards for Social Studies exclusively, which include expectations for historical thinking skills. To ensure this occurs, the assessments deliberately ensure.

| FOCUS | DETAILS | EXAMPLE |
|---|---|---|
| <p>Limited number of reading passages</p> | <p>Many of the question sets include sources that do not require significant reading (e.g. maps, charts, political cartoons)</p> | <ul style="list-style-type: none"> • http://www.louisianabelieves.com/docs/default-source/assessment-guidance/social-studies-grade-3-task-set---producers-and-consumers.pdf?sfvrsn=4 • http://www.louisianabelieves.com/docs/default-source/assessment-guidance/social-studies-grade-8-item-set---louisiana-during-wwii.pdf?sfvrsn=6 • http://www.louisianabelieves.com/docs/default-source/assessment-guidance/social-studies-grade-8-task-set---louisiana-economy-during-the-antebellum-period.pdf?sfvrsn=8 |
| <p>When included, reading passages are below grade level or just at grade level</p> | <p>Every passage is reviewed by expert reviewers and Louisiana educators</p> <p>Often the passages are below or just at grade level</p> | <p>Grade 5 Question Set: The Columbian Exchange: Source 3: The Epidemic in New Spain</p> <ul style="list-style-type: none"> • Reading level: Middle of grade band 2-3 (Lexile 560) <p>Grade 7 Question Set: Women’s Rights Movement Source 1: Excerpt from the Declaration of Sentiments (July 1848)</p> <ul style="list-style-type: none"> • Reading level: Middle of grade band 6-8 (Lexile 1050) <p>Source 2: Excerpt from Ain’t I a Woman? (July 1851) by Sojourner Truth</p> <ul style="list-style-type: none"> • Reading level: Low grade band 4-5 (Lexile 790) |

Social Studies Assessment Overview: Resources

With all standards and assessments, the Department has released and will continue to release resources to support educators as they implement these standards.

| RESOURCE | LOCATION |
|---|---|
| Assessment Overview FAQ | http://www.louisianabelieves.com/docs/default-source/assessment-guidance/2017-social-studies-assessment-overview.pdf?sfvrsn=8 |
| Instruction: Scope and sequence documents | http://www.louisianabelieves.com/resources/library/k-12-social-studies-resources |
| Instruction: Sample classroom tasks | http://www.louisianabelieves.com/resources/library/k-12-social-studies-resources |
| Instruction: Textbook reviews | http://www.louisianabelieves.com/academics/ONLINE-INSTRUCTIONAL-MATERIALS-REVIEWS/curricular-resources-annotated-reviews |
| Assessments: Assessment guides | http://www.louisianabelieves.com/resources/library/assessment-guidance |
| Assessments: Sample sets | http://www.louisianabelieves.com/resources/library/released-and-sample-test-items |
| Assessments: Practice tests | Available winter/spring |
| Assessments: EAGLE and additional items | Available during the 2017-2018 school year |

LEAP 2025 Resources

| Resource | Purpose | Timeline |
|--|---|--|
| <u>Assessment Guides</u> | are designed to assist Louisiana educators in understanding the LEAP 2025 ELA, math, and social studies assessments which will be administered in the spring. LEAP and iLEAP science assessment guides are also available. | Available now! |
| Online Tools Trainings (OTTs) | provide teachers and students examples of interactive, technology-enhanced items so they can become familiar with the computer-based testing format; available in INSIGHT or <u>here</u> using the Chrome browser; includes Spanish version | Available now! (Grades 3-8 ELA and math update in Winter) |
| Practice Tests | offer full-length, computer-based (grades 3-8) and paper-based (grades 3-4) grade-level ELA, math, and social studies tests to help prepare students for the spring assessments | Available Winter-Spring |

ACT and ACT WorkKeys

Update:

- During the upcoming ACT administration, 10 districts (32 schools) will be participating in the ACT Online pilot. The ACT Online assessment window is March 21 - April 4, 2017.

Action Steps:

- The ACT MOU and supporting documents are available in the [Assessment Library](#) under ACT Documents. Send completed documents to assessment@la.gov.

District Support

The Assessment team offers multiple avenues of support to districts, schools, and teachers seeking information or assistance about assessment administration and accountability.

Assessment@

- All stakeholders are encouraged to email assessment and accountability questions and/or concerns to assessment@la.gov.

Assessment Office Hours: Tuesdays @ 1pm

- Office Hours Webinar Link: <https://louisianaschools.adobeconnect.com/dtc/>
- Enter the meeting room as a guest and provide your name
- Call-In Information: (646) 307-1380; meeting room # 951155484

Assessment Hotline

- For immediate assistance regarding assessment and accountability, district-level staff may call the Assessment Hotline at 1-844-268-7320.



Measuring Student Success: 2016 Accountability Releases

2015-2016 Superintendent and Principal Profiles

The Superintendent and Principal Profiles provide school and school system leaders with an in-depth look at performance score components, including subgroup data, for current and prior years. These reports will be released this month to school systems and are for internal purposes only.

Sample Metrics:

- Component-by-component breakdown of a school or district's performance score
- Comparison of performance across years, districts, and similar schools
- Subgroup data for state assessments and graduation rates

Email assessment@la.gov with questions.

2015-2016 ACT Match/No Match Files

The Department will release ACT Match/No Match files this week in the FTP.

The ACT Match List includes all grade 12 students who have a prior year ACT score and can be retested during the spring ACT test administration at the expense of the district/school.

The ACT No Match list includes all grade 12 students who do not have a prior year score on files available to the LDOE. These students should be tested at the expense of the LDOE during the spring ACT administration, unless they participate in LAA 1 testing.

All grade 12 students, except those that participate in LAA 1 testing, must have an ACT score for accountability purposes.

Email assessment@la.gov with questions.

2015-2016 Accountability Releases

| Release | Date | Location |
|---------------------------------------|--------------------|----------------------------------|
| ACT Match/No Match | Week of December 5 | FTP |
| Superintendent and Principal Profiles | December | FTP |
| Transitional Student Growth Data | | Compass Information System (CIS) |

Email assessment@la.gov with questions.



Measuring Student Success: School Redesign Summit

School Redesign Summit

Since 2012, 24,000 fewer Louisiana students attend an F-rated school as determined by our statewide accountability system. At the same time, there remain schools in our state whose challenges are significant.

- The Every Student Succeeds Act (ESSA) requires that districts develop plans to improve student achievement in their persistently struggling schools, and the law requires the state to competitively grant funds to districts with strong, evidence-based plans.
- In order to support the development of these plans, the Department released a [Request for Information](#) (RFI) in November to solicit proven school partners from within Louisiana and across the country interested in partnering with Louisiana school districts.
- The most promising of the responding partners will be invited, along with district and school leadership teams, to an all-day School Redesign Summit in New Orleans. This summit will be an opportunity for an exchange of ideas and strategies with these organizations as you begin to develop your district's plans for school improvement.

Ultimately, the state will fund the most promising of these district plans using the targeted ESSA funds.

School Redesign Summit

The School Redesign Summit will be held on January 19th at the New Orleans Convention Center.

In order to register for the summit, districts should complete the [School Redesign Summit Needs Assessment](#). The needs assessment will guide districts to answer 4 essential questions:

1. For which schools will our district seek support at the Summit?
2. What do our struggling schools need most in order to improve?
3. With which partners would our district most want to meet?
4. Who from our district will attend the Summit?

Action Step: Complete the needs assessment, which serves as registration for the summit, **by December 15 and send it to hunter.brown@la.gov.**

For additional information please contact your Network Leader

Early Childhood

Early Childhood

Early Childhood milestones are approaching. Contact kaye.eichler@la.gov with questions.

CLASS Observations

By December 15

- All fall observations have been completed for all classrooms and data entered into the *CLASS* system.
- All observers have participated a calibration exercise sponsored by the community network.

By February 1, 2017

- All spring observations have been scheduled in the *CLASS* system.

Coordinated Enrollment

By February 1, 2017

- The Community Network's Coordinated Enrollment plan has been submitted.

By February 28, 2017

- The 2/1/2017 child count has been submitted.

Graduation Pathways

2017 Jump Start Convention

The **2017 Jump Start Convention will be held Tuesday, January, 17, 2017 at the Raising Cane's River Center in Baton Rouge.**

Attendees of the convention should include high school principals, district/charter administrators, professional school counselors, Jump Start regional team members, and regional economic development and workforce development organizations.

Key Jump Start Convention agenda items this year will include:

- Finding ways to maximize school and district Jump Start funding
- Expanding workplace experiences
- Providing alternate pathways to a diploma for students with disabilities
- Supporting best practices for counselors

Action Step: Please [register](#) by January 6, 2017.

For information about hotel room blocks available, please click [here](#).

Course Choice Spring 2017 Registration

Course Choice provides students with access to a variety of course offerings from online, face-to-face, industry training, and dual enrollment course providers, that are not currently available at their school including:

- Career and technical preparation, supporting the Jump Start program;
- Academic work required to achieve TOPS;
- Advanced course work not available at the school due to limited resources;
- Dual enrollment; and
- Intensive remediation for students struggling to stay on pace for graduation.

Registration for Spring 2017 opened on November 30, 2016.

- Schools will register students directly with the Course Provider. Please refer to the [Course Choice Registration Instructions](#) for details on this process.
- Once students are registered with the Course Providers, schools should document enrollments in the [Course Choice Registration system](#).
- The deadline to register is January 9, 2017.

For more information, e-mail sca@la.gov.

JAG-LA

The Pre-Employment Transition Services (PETS) are a new funding source through the Louisiana Workforce Commission, used to help support the expansion of the JAG-LA Program. Progress reports on these funds are due to the Department on the last day of each month.

JAG-LA Upcoming Events:

- On-Site Monitoring the week of December 5th will include Caldwell, Grant, Lafayette, Richland, Winn Parishes.
- On-Site Monitoring the week of December 12th will include Avoyelles, Catahoula, Concordia, Rapides, St. Mary, Terrebonne Parishes.
- The JAG-LA 2nd Quarterly Meeting will be held at the end of January. Dates and location are forthcoming.

For more information, please contact Dianna.Keller@la.gov .

Call Summary

Key Deadlines and Supports

| | Key Deadlines | Key Resources and Supports |
|-----------------|---|---|
| December | <ul style="list-style-type: none"> • By Dec 7: Register for Dec Supervisor and Principal Collaborations in Coursewhere • By Dec 7: Register for remaining TAP field trips • By Dec 15: Submit School Redesign Needs Assessment • By Dec 15: Complete all fall CLASS observations • Register for the TAP/NIET Best Practices Field Trip Opportunities (fall 2016) | <ul style="list-style-type: none"> • Dec 9, 12, 13 and 15: Supervisor and Principal Collaborations • December Virtual Teacher Leader Collaboration Overview • Teacher Preparation Transition Guide • Regional Workforce Reports • EAGLE 2.0 • K-2 Formative Tasks • Technology Readiness Tool |
| January | <ul style="list-style-type: none"> • By Jan 6: Register for the Jump Start Convention • By Jan 6: Submit feedback on proposed science standards • By Jan 9: Students register for Course Choice | <ul style="list-style-type: none"> • Jan 17: Jump Start Convention • Jan 19: School Redesign Summit |