



Supervisor Collaboration Agenda: Harvey Thursday, February 1, 2018

Supervisor Collaboration events provide supervisors across Louisiana with access to high-quality tools, resources and professional development to help them effectively lead in 2017-2018.

Location:

Jefferson Parish School Board Building
501 Manhattan Blvd.
Harvey, LA 70058

Parking:

Park in the lot in front of building. Parking is free.

Agenda:

8:00 a.m. - 8:30 a.m.	Sign-in (Board Room)	9:40 a.m. - 10:40 a.m. Session Rotation 2
8:30 a.m. - 9:30 a.m.	Session Rotation 1	10:50 a.m. - 11:50 a.m. Session Rotation 3

Preparation

All participants should **bring a fully charged laptop computer** with them to the event and [download session materials in advance](#).

Food and Hotels

Food will *not* be provided at the event. Click here for a list of [Harvey area hotel and food options](#).

Contact Us

Please contact your Network support team or DistrictSupport@la.gov with questions about this event.

Sessions

LEA planning team members will have the opportunity to choose **three** sessions that fit their needs and interests. Attendees from each LEA should coordinate with one another to ensure they get all the necessary information. All sessions are filled on a first come, first served basis.

Session Topics	Session Title	Session Description	Rotation(s)	Room
School System Planning	Developing Meaningful Family Engagement Policies under ESSA	In order to receive funding for Title I plans under ESSA, schools and school systems must involve families in the development of family engagement polices and compacts. This session will provide participants with an overview of family engagement requirements in the law, and a model process and tools for developing school and family compacts.	3	Room 2505
Accountability	Understanding Cohort Graduation Start to Finish	In this session, participants will be informed about how cohort membership is defined, how state records affect the identification of graduate and student earning credentials, and how to certify data. The new cohort report will also be shared and discussed.	1	Board Room
Instruction: Math	High School Math and STEM Updates: What is currently happening, and what will be available for 2018-2019?	Participants in this session will discuss the findings from Springboard Intensive Algebra I, Statistical Reasoning, and Introduction to Engineering implementations and the vision for 2018-2019 regarding high school math and STEM opportunities.	3	Room 2508
Instruction: Math	"Hot Off the Press" High-Quality Math Curriculum Updates	As schools and districts begin thinking about the 2018-2019 school year, this session will provide an overview of available high-quality math curriculum options and program updates. We will discuss each high quality program, the benefits and limitations of each, new vendor-led initiatives, and available PD to support implementation. Participants will leave with clear next steps to ensure implementation in 2018-2019 is a success.	2	Room 2508

Session Topics	Session Title	Session Description	Rotation(s)	Room
Instruction: Science	Science: Connecting Standards, Instruction, and Assessment	Participants will analyze how the science instructional resources and assessment design connect to the Louisiana Student Standards for Science . Participants will also examine ways to "connect the dots" between the science standards, instruction, and assessment.	3	Room 1703
Instruction: ELA	ELA Guidebooks: Yesterday, Today, Tomorrow	The Department is currently working on updates to ELA Guidebooks based on continued feedback from the field. This session will share our approach to supports for diverse learners and a timeline of when the updates will be released.	3	Room 1701
Instruction: Social Studies	Creating Daily Lessons with Social Studies Scope and Sequence	Participants in this session will dive into the updated scope and sequence documents . The US History sample scope and sequence document will be the foundation of this session. The beginning of the session will focus on the different features of the scope and sequence tasks. In the second portion of the session, participants will walk through the process of creating daily lessons from the instructional process listed in the instructional tasks. The participants will be able to use the process of creating daily lesson at all grade levels.	2	Room 1703
Instruction: Special Education	Improving Early and Accurate Identification of Students with Disabilities: Best Practices in Early Childhood Screening and Child Find	In this session, LDOE staff will provide a brief overview of strategy 1—specifically as it applies to Child Find and early childhood screening. Participants will engage in conversations between district early childhood staff, district special education staff, and Early Steps regional representatives to share best practices across districts and to highlight specific challenges as well as possible solutions.	3	Room 1709

Note: All of the session information in this table is subject to change.

Session Topics	Session Title	Session Description	Rotation(s)	Room
Instruction: Special Education	Guidebooks + Louisiana Connectors = Inclusion for Students with Significant Disabilities	Participants in this session will learn how to better serve students with significant disabilities by incorporating the LEAP Connectors into Guidebook lessons by integrating assistive technology and Universal Design for Learning strategies.	1, 2	Room 2510
Instruction: Educational Technology	Protecting Student Privacy: Equipping Teachers to Use Educational Technology Safely	In this session, participants will talk through how to train teachers to use technology tools and ensure student data privacy. Training tools and templates will be provided.	1, 2	Room 2505
Assessment: LEAP 360	LEAP 360: Making Connections	The participants in this session will explore LEAP 360 Diagnostic and Interim assessments. This session will highlight ways that LEAP 360 can be used to encourage conversation and inform instruction and assessment.	1, 2	Room 1701
Assessment: Math	Using Online Mathematics Assessment Tools	In this session supervisors will demo the new online graphing calculator available for Algebra I and Geometry testers in the INSIGHT testing platform. Additionally, supervisors will practice using the equation-builder tool and learn effective ways to incorporate its use in instruction. <i>Participants are encouraged to bring a laptop computer.</i>	3	Room 2509
Principal Support: TAP and the Principal Fellowship	TAP and Principal Fellowship Opportunities	Participants will engage in a panel discussion with their peers currently taking part in TAP and Principal Fellowship . After the discussion, panel members will host small-group discussions to talk more in-depth about how these programs have led to changes in their schools.	3	Room 2510

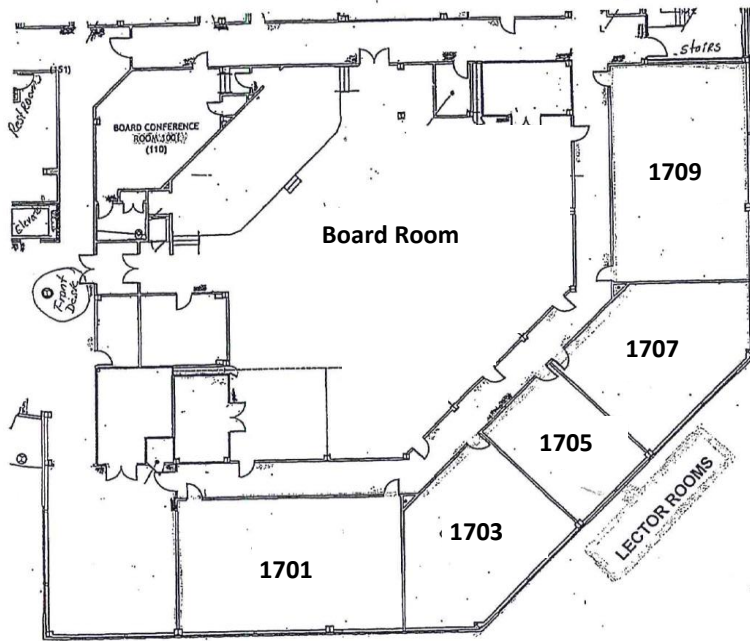
Note: All of the session information in this table is subject to change.

Session Topics	Session Title	Session Description	Rotation(s)	Room
Talent	Scaling High-Quality Teacher Professional Development	<p>Content Leaders help scale content-rich and curriculum-specific PD and support for teachers while also creating a leadership pipeline for top talent.</p> <p>District supervisors will leave this session with strategies to maximize the impact of this role within their context, information about how to include educators in the 2018-2019 cohort, and tips on how to increase the strength of the School Redesign application.</p>	1	Room 1703
Talent	Supporting Residents and New Teachers: Maximizing the Mentor Role	<p>Mentor Teachers help provide support to preservice, new, or struggling teachers, while creating leadership opportunities for top talent.</p> <p>District supervisors will leave this session equipped with strategies to maximize the impact of this role within their unique context and information about how to include educators in the 2018-2019 cohort.</p>	3	Board Room
Early Childhood	Coordinated Enrollment: clear and actionable plans	This is a working session for lead agency contacts. Lead agency representatives should come prepared to present their community network plan for coordinated enrollment to their peers. They will receive ideas for adjustment, then determine next steps to implement the improvements.	1	Room 1709
Early Childhood	Performance Profile Results: continuing to discover and discuss	In this session, the Early Childhood Team will share the Department's approach to longitudinal analysis of Performance Profile data and lead agency representatives will offer feedback through the local lens.	2	Room 1709

Note: All of the session information in this table is subject to change.

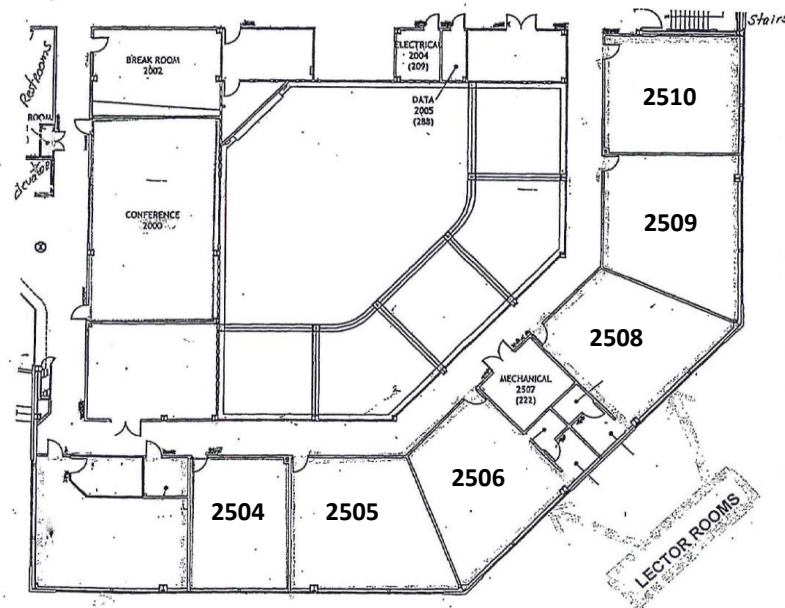
Session Topics	Session Title	Session Description	Rotation(s)	Room
Student Opportunities	High School Policy Updates	In this session, participants will review recent policy revisions as approved by BESE for 4th and 8th grade promotion, summer remediation, and transitional ninth grade. In addition, an overview of the minimum requirements for dual enrollment, as approved by the Louisiana Board of Regents, will be provided.	1	Room 2509
Student Opportunities	Jump Start Summers Opportunities via Course Choice/SCA Funding	Participants will be provided with an overview of Jump Start Summer opportunities for students to achieve credentials through summer coursework and internships and learn about the process for using Course Choice/SCA funding to support these opportunities.	2	Room 2509
Data Systems	Louisiana Secure ID (eScholar)	Participants in this session will review the steps necessary to submit data to the Louisiana Secure ID System (eScholar), run and understand reports, interpret error and validation reports, and understand the importance and use of the data.	1 – 2 (8:30 – 10:00) 2 – 3 (10:10 - 11:40)	Room 1707
Data Systems	School Calendar System (SPC) & Student Information System (SIS)	Participants will review the steps necessary to submit data to the Calendar System (SPC) and Student Information System (SIS), run and understand reports, interpret error and validation reports, and understand the importance and use of the data.	2 – 3 (10:10 – 11:40)	Room 2506
Data Systems	Special Education Reporting System (SER)	Participants will review the steps necessary to submit data to the Special Education Reporting System (SER), run and understand reports, interpret error and validation reports, and understand the importance and use of the data.	1 – 2 (8:30 – 10:00)	Room 2506

Note: All of the session information in this table is subject to change.



1st Floor

Jefferson Parish School Board Office



2nd Floor

Note: All of the session information in this table is subject to change.