



## Supervisor Collaboration Event Agenda: Harvey January 2017

### **Location:**

Jefferson Parish School Board Building  
501 Manhattan Blvd.  
Harvey, LA 70058

### **Parking:**

Park in the lot in front of building. Parking is free.

### **Agenda:**

7:30 a.m. - 8:00 a.m.	Sign-In ( <i>Board Room</i> )	9:10 a.m. - 10:10 a.m.	Session Rotation 1
8:00 a.m. - 9:00 a.m.	ESSA update with Superintendent White	10:20 a.m. - 11:20 a.m.	Session Rotation 2
		11:30 a.m. - 12:30 p.m.	Session Rotation 3

### **Preparation**

All participants should **bring a fully charged laptop computer** with them to the event and [download session materials in advance](#).

### **Food and Hotels**

Food will *not* be provided at the event. Click here for a list of [Harvey area hotel and food options](#).

### **Contact Us**

Please contact your Network support team or [DistrictSupport@la.gov](mailto:DistrictSupport@la.gov) with questions about this event.

**Sessions**

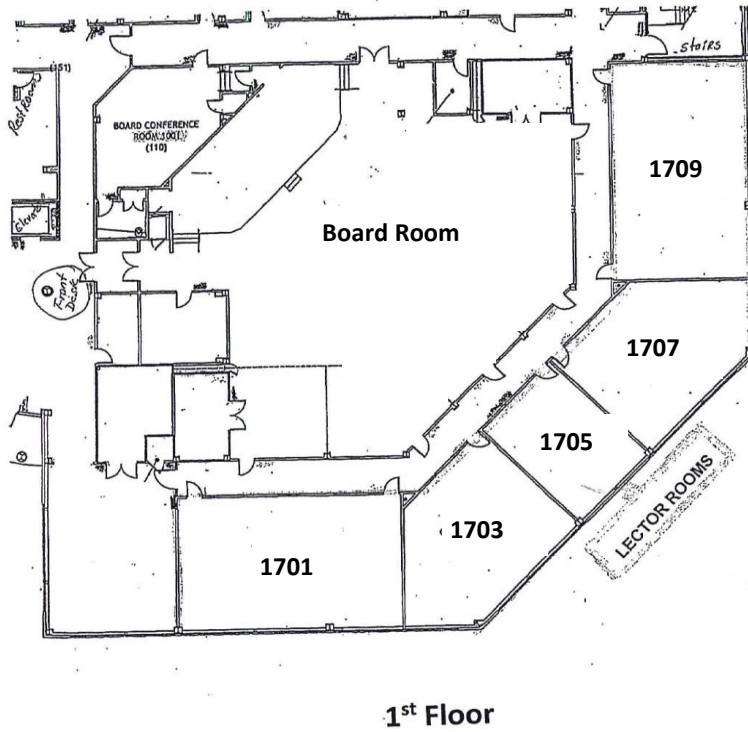
LEA planning team members will have the opportunity to choose **three** sessions that fit their needs and interests. Attendees from each LEA should coordinate with one another to ensure they get all the necessary information. All sessions are filled on a first come, first served basis.

Session Topics	Session Title	Session Description	Rotation(s)	Room
ESSA	ESSA Plan with Superintendent White	In the opening session, Superintendent White will share important updates related to <a href="#">2017-2018 ESSA Framework</a> .	Opening Session	Board Room
ELL and Special Education	The Louisiana Connectors for ELL and Students with Significant Cognitive Disabilities	Participants will get an overview of the recently approved <a href="#">Louisiana Connectors</a> for English Language Learners and students with significant cognitive disabilities. Participants will learn about plans for PD, guidance, and resources to support implementation of the Louisiana Connectors at the start of the 2017-2018 school year.	1, 2	2509
Library	This is Not Your Mama's Library!	Does your school have a 21st century library? The focus of school library programs has shifted from an emphasis on resources to an emphasis on creating a community of lifelong learners and creators. In this session, librarians from the Louisiana Association of School Libraries will present the updated library guidelines to support you in developing a course of action to ensure your school library is an effective school library program that positively impacts student learning.	1, 2	2510
Curriculum & Instruction: Math	Math 2017-2018: Vision and Support	Participants in this session will explore what data reveals about students that should be accelerated and remediated for Algebra I and learn about instructional materials under development for each. Participants will also dig into a prototype of Eureka remediation tools and high school math courses that are under development.	1	1707

Session Topics	Session Title	Session Description	Rotation(s)	Room
<b>Curriculum &amp; Instruction: Science</b>	Science Standards - Overview of Drafts and Implementation Plan	In March, the <a href="#">science standards review committee</a> will submit a draft of the proposed Louisiana Student Standards for Science to BESE for approval. For those eager to dig in early, join this session to learn about the underlying framework of the drafts of the standards and plans for implementation support.	2, 3	1707
<b>Social Studies</b>	Social Studies Shifts	<p>Building on content and claims, participants will explore the three main shifts in social studies instruction:</p> <ol style="list-style-type: none"> <li>1. Use sources regularly to learn content</li> <li>2. Make connections among people, events, and ideas across time and place</li> <li>3. Express informed opinions supported by evidence from sources and outside knowledge.</li> </ol> <p>By reviewing sources in the updated <a href="#">Social Studies Scope and Sequence exemplar</a>, discussing a PLC scenario, and analyzing a class discussion, participants will identify clear next steps in implementing the social studies instructional shifts.</p>	1, 3	2505
<b>Curriculum, Assessment and Professional Development</b>	Curriculum Implementation, Part 3	<p>This session is part three in a series designed to help LEAs create more cohesive plans for their curriculum, assessment and professional development. In this session, participants will discuss the characteristics of strong PD plans and evaluate their own plans against this. Participants will leave with concrete ideas ways to improve the professional development available to teachers in their district in 2017-2018.</p> <p>Download materials from <a href="#">part 1</a>, <a href="#">part 2</a> of this series.</p>	2, 3	1701

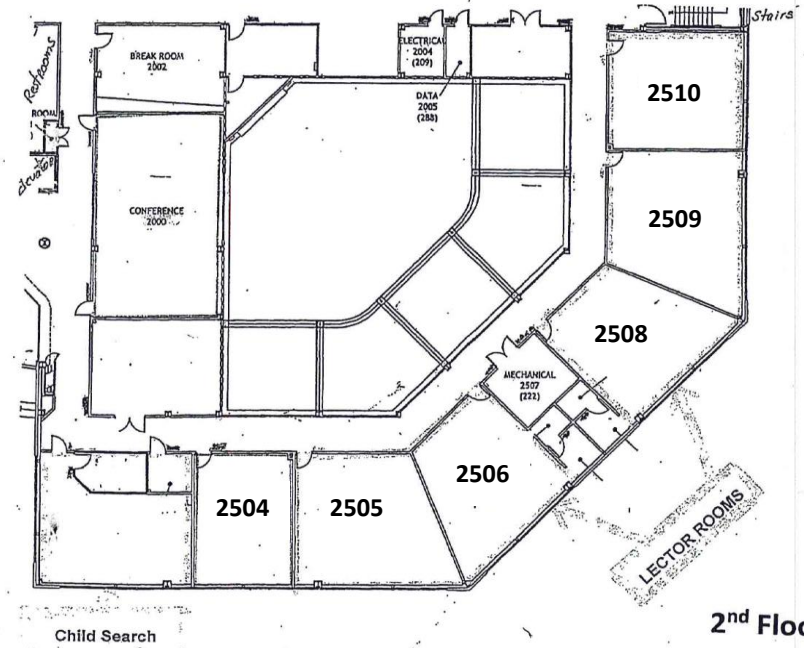
Session Topics	Session Title	Session Description	Rotation(s)	Room
<b>Grants Management</b>	Building a Budget under ESSA	The new federal education law, the Every Student Succeeds Act (ESSA), will go into effect with the 2017-2018 school year. This session will walk federal program directors and school business officials through the fiscal components of the law and provide planning resources in preparation for submission of the 2017-2018 consolidation application.	2 – 3 (90 minute session)	Board Room
<b>Early Childhood</b>	Coordinated Enrollment Check Up for Lead Agencies	This session is specifically for Early Childhood Community Network Lead Agency contacts. Achieving coordinated enrollment is critical for every community network to have more children ready for kindergarten. We will review the 2015-2016 Self-Assessment results and other relevant data. This session will feature select community networks that will showcase their coordinated enrollment efforts.	1	1709
<b>Early Childhood</b>	Those Infernal Informational Metrics: How to Get a Clear Picture of their Status in your Community Network	Do you want to eliminate surprise and frustration while supporting clean and accurate data for the Performance Profile Informational Metrics? We will review the process and tools for collecting and checking the accuracy of this information. Participants will have the opportunity to hear best practices from colleagues and plan for improving their own processes.	2	1709
<b>Early Childhood</b>	“Survey Says...”: An In-depth Look at the 2015-2016 Results from the Teacher and Family Surveys.	We will take an in-depth look at results from the 2015-2016 Teacher and Family Surveys. Discussion will focus on using the results to support improvement.	3	1709

Session Topics	Session Title	Session Description	Rotation(s)	Room
<b>Data Governance</b>	Building Strong Data Governance and Privacy Protocols	Continuing the work to develop and implement data governance at the LEA and school level, this session will focus on step number four: build strong protocols. Participants will examine and discuss templates and exemplar practices, processes, and policies in the area of online services, contracts/agreements, AUPs.	1, 3	2508
<b>Assessment &amp; Technology</b>	Preparing for Spring LEAP and EOC Assessment Administration	Do you need help getting started preparing and planning for LEAP and EOC administrations? This session will walk District Test Coordinators (DTCs) through the process of preparing their districts for the upcoming spring assessments. Topics will include online and paper test security, test setup, and test scheduling.  Note: This session was delivered at the September Collaboration and through in-person trainings in October, so this session would serve as a refresher to anyone who attended those events.	2	1703
<b>Technology</b>	Infrastructure and Technology Planning to Support for ESSA and Education Technology Goals	District Technology Coordinators will review assessment preparation procedures and technology updates and begin planning for network and needs assessments for district for ESSA planning.	1	1703



1<sup>st</sup> Floor

**Jefferson Parish School Board Office**



2<sup>nd</sup> Floor