

Louisiana Believes

**District Planning Call
June 2017**

Agenda

- I. 2017-2018 School System Planning Process**
- II. Early Childhood**
- III. Measuring Results**
- IV. Teaching & Learning**
 - A. 2016-2017 Assessment Results
 - B. LEAP 360
 - C. 2017-2018 Assessments
- V. Educator Workforce**
- VI. Graduation Pathways**
- VII. Call Summary**

2017-2018 School System Planning Process

2017-2018 School System Planning Process

Each year school systems review results and identify areas of greatest need for the upcoming school year. During the 2017-2018 school year, **the Department will support school systems through the following steps to prepare for the 2018-19 school year:**

1. Conduct a needs assessment: analyze data to identify areas of greatest need
2. Build a plan to address these needs, including plans for struggling schools and students
3. Create a budget
4. Apply for federal flow-through and competitive school redesign funds

This process will occur on the following timeline:

1. **July School Turnaround Grant Sessions:** Kick off round 1 of school turnaround grant applications (application released August 2017)
2. **Fall 2017:** Apply for round 1 competitive school redesign funds
3. **September Collaborations:** Kick off process and share funding application resources
4. **November Collaborations:** Review results and district priority setting
5. **January 2017:** BESE allocates round 1 funds competitive school redesign funds
6. **Spring 2018:** Apply for federal flow through and round 2 competitive school redesign funds
7. **Summer 2018:** BESE allocates funds

Communication Support: 2017-2018 Communication Structures

2017-2018 District Planning Calls

Summer/Fall 2017	Winter 2017-2018	Spring 2018
<ul style="list-style-type: none"> • August 9 • September 6 • October 4 • November 1 	<ul style="list-style-type: none"> • December 13 • January 10 • February 7 	<ul style="list-style-type: none"> • March 7 • April 11 • May 9

2017-2018 Collaborations

	Dates	Location	Audience
Fall Collaborations	Sept 12, 14, 19 & 21	TBD	Supervisors and Teacher Leaders
Winter Collaborations	Nov 9, 13, 15 & 16	TBD	Supervisors
	Jan 30, Feb 1, 6 & 8	TBD	Supervisors and Principals
Spring Collaborations	March 13-15	TBD	Supervisors
Teacher Leader Summit	May 29-June 1	New Orleans	Supervisors, Principals, Teacher Leaders

Academic Support: School Redesign Grant & RFP

As part of the state's ESSA plan, **225 schools have been identified as needing comprehensive support**. Shortly after approval for Louisiana's ESSA plan, **the Department will release the School Redesign Grant application to competitively award ESSA school improvement funding**.

As part of the School Redesign Grant application, school systems will be asked to:

1. Conduct a needs assessment: analyze data to identify areas of greatest need
2. Build a plan to address these needs, including plans for struggling schools and students
3. Create a budget
4. Apply for federal flow-through and competitive school redesign funds

The **Department will be contracting with a third party evaluator with expertise in school improvement to help review these applications**. A Request For Proposals (RFP) was released earlier this year and the Department is currently evaluating RFP responses to identify the strongest proposal.

For additional information, please contact your Network Leader, [Delaina LaRocque](#) or [Shavonne Price](#).

Funding Support: 2017-2018 ESSA Consolidated Application

The **2017-2018 ESSA Consolidated Application** was released on **Friday, June 9**. It provides school systems the ability to budget their local allocation of federal funds under the new Every Student Succeeds Act (ESSA).

- The amount of **Title I funding for schools and school systems is increasing in 2017-2018**. The total amount of **unrestricted funding that flows through to LEAs is increasing by \$8.7 million. An additional \$22.1 million will be available in competitive grants** for schools requiring comprehensive or urgent intervention.
- Louisiana's state **Title II award was reduced by seven percent from \$49.9M to \$46.2M**. Additionally, the 2017-2018 allocations are impacted by the significant changes to the Title II formula under ESSA. The Title II formula under NCLB included a provision that allowed a minimum award for every LEA. After the distribution of these minimum awards, which accounted for more than 90 percent of the total Title II state allocation, the remaining funding was allocated according to a weighted formula. Therefore, **LEAs largely received a flat rate allocation under Title II in the past. Funds are now distributed on a weighted basis under the federal law**. This accounts for most of the discrepancy between previous allocations and 2017-2018 allocations in LEAs.
- For the first time, the **ESSA consolidated application will also include an appropriation for the Title IV program called Student Success and Academic Enrichment grants**. Louisiana has been **awarded more than \$7.5 million for 2017-2018, which will be distributed to LEAs based on the traditional Title I formula with a minimum award of \$10,000**.

More information on the 2017-2018 federal preliminary allocations may be found [here](#).

Funding Support: 2017-2018 Formula Funding Timeline

In order to begin to obligate funds for federal formula grants—ESSA, IDEA, and Perkins—federal regulations require that these applications be in a **substantially approvable form**. Since the federal regulations do not define “substantially approvable form,” the LDOE is able to determine the definition.

Beginning with FY2017- 2018, the LDOE will consider a formula application to be in a substantially approvable form upon the successful creation of an application in eGMS. Previously, applications must have been submitted in order to be substantially approved.

In order to begin **obligating funds under the FY2017-2018 formula applications on July 1, 2017, school systems must complete the following steps:**

1. Complete the Central Data items, including assurances applicable to ESSA, IDEA, and Perkins.
2. Create an application for ESSA, IDEA, and Perkins. The normal application approval process will commence once applications are submitted for review.

Please note that an **application must be submitted and approved before the LDOE may reimburse** any claims.

For more information or questions, please email Randy.Littleton@la.gov.

Early Childhood

New Pilot of Abbreviated Versions of *GOLD*[®] for Early Childhood Sites

The Department will pilot two abbreviated versions of *GOLD*[®] in 2017-2018:

Version 1: Infant through one-year-olds

Version 2: Two- through four-year-olds

All early childhood sites are being offered the opportunity to pilot shorter, more streamlined versions of *GOLD*[®]. The **streamlined versions include fewer indicators and objectives** but still allow pre-K, Head Start, and child care center teachers to finalize checkpoints, track progress, and run reports.

This is a **voluntary, statewide pilot**. Sites may continue to use the full, comprehensive version of the tool.

Each site, including schools, Head Start, and child care centers, **has until August 4 to opt into the pilot via an [online survey](#)**. For a site to participate in the pilot, **all classrooms** at the site must use an abbreviated version of the tool.

For more information, please contact nasha.patel@la.gov .

Statewide Early Childhood Webinar on June 21, 2017

Updates to Early Childhood Policy and Practice for 2017-218

All early childhood stakeholders are invited to attend a very important webinar at **noon tomorrow, Wednesday, June 21.**

Jenna Conway, Assistant Superintendent for Early Childhood, will discuss what is new on the horizon for 2017-2018.

Use the information below to connect to the webinar.

- Go to <https://louisianaschools.adobeconnect.com/ec/>
- Toll free access number: 1-855-240-2575
- Participant PIN code: 17428453

Please email nasha.patel@la.gov with questions.

Measuring Results



**Measuring Results:
2016-2017 Assessment Results**

Release of 2017 Assessment Results

Below is the timeline for when the Department will release 2016-2017 school- and school system-level assessment results. School systems should develop a plan for communicating these results to principals, teachers, and families.

Assessment	Reporting Timeline	Location
ELDA/LAA 1	Released	eDirect
End-of-Course school reports	Released	eDirect
LEAP ELA/Math/Science <i>unsuppressed, student-level results</i>	June 30	eDirect
LEAP Online Cleanup <i>(student correction system)</i>	July 5-12	eDirect
LEAP ELA/Math/Science State- and School- System Level Results <i>(public release)</i>	Week of July 10	LDOE website
ACT	July	FTP
Advanced Placement	Early August	FTP
LEAP Social Studies	Early Fall	eDirect

Please email assessment@la.gov with questions.

LEAP 2017 Assessment Result Resources

Resource	Description	Release Date	Location
Parent Guide to 2017 LEAP Results	<ul style="list-style-type: none"> • Guide to help parents read and interpret the LEAP student reports, with accompanying online resources (sent home with student reports) • Translated versions available in Spanish, Vietnamese and Arabic 	July 3	Family Support Toolbox
LEAP Student Report Full Translated Text in Spanish, Vietnamese and Arabic	Provides families with the performance descriptors for ELA and Math in each grade-level and for each subclaim on the LEAP student reports	July 3	Family Support Toolbox
Parent Conversation Guide to 2017 LEAP Results	Talking points to help guide teachers' conversations with parents about the LEAP student reports taking place in August	July 25	2018 Back-to-School Package and Family Support Toolbox
Teacher Guide to 2017 LEAP Results	Guide for teachers in understanding their students LEAP results from 2016-2017 and resources to support instruction based on those results.	July 25	2018 Back-to-School Package in Teacher Toolbox
Back-to-School Parent Night Presentation	Customizable presentation that schools can use to provide parents with information on 2017-2018 academic goals, standards and instruction, and understanding 2016-2017 assessment results	July 25	2018 Back-to-School Package in District Toolbox

Please email assessment@la.gov with questions.

eDirect Student Correction System Online Cleanup

The Student Correction System for online cleanup, hosted in eDirect, provides districts and schools with an opportunity to review and edit some data elements for LEAP, LAA 1, ELDA, and EOC 2016-2017 assessments.

- Student demographics
- Impending zeros

The window for accessing the corrections system in eDirect and submitting updates is July 5-12. Prior to opening, a user guide will be posted in eDirect to assist with completion of corrections submitted to the system. The deadline for submitting all corrections will be communicated in the June 27 newsletter.

It is important that data for students accurately reflect information in SIS that can be matched across years in order to assign progress points this fall and to calculate the SPS growth index in future years.

Final assessment data certification is scheduled for early fall.

Please email assessment@la.gov with questions.



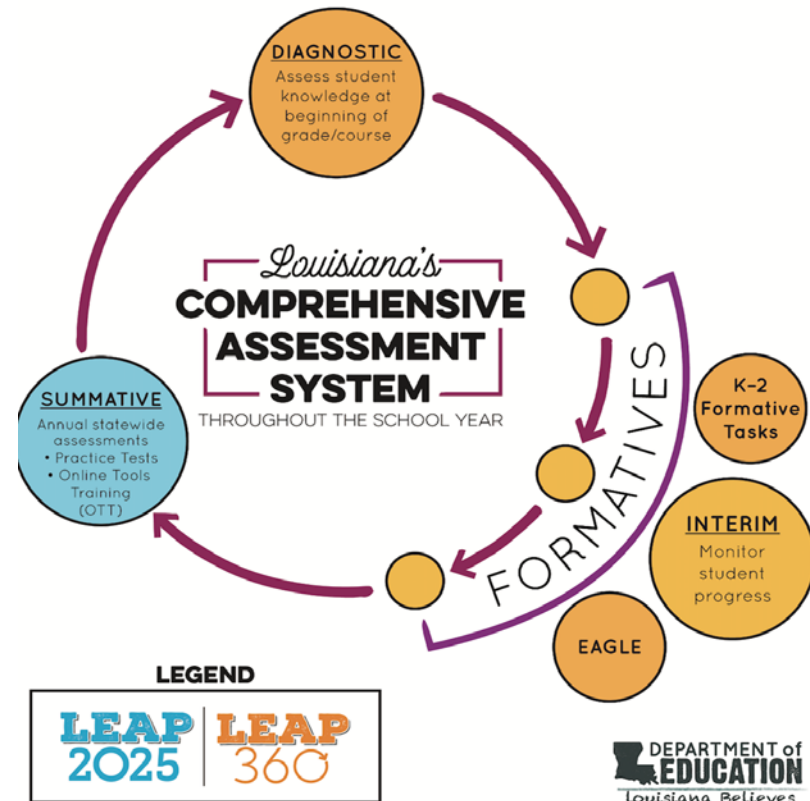
Measuring Results: LEAP 360

LEAP 360

The goal of LEAP 360 is to deliver **streamlined, high-quality assessments** in a comprehensive system for classrooms, schools, and districts.

What is the impact on teachers, principals, and districts?

- **Teachers** will have a more complete picture of student performance.
- **Principals** will identify throughout the system where additional support is needed to focus on the learning that matters most for students.
- **Districts** will reduce overall local testing while helping to monitor progress toward district goals.



LEAP 360

The DIAGNOSTIC assessments are designed to allow teachers to:

- **Identify the specific prerequisite skills** individual students or groups of students need in order to be successful with grade level content
- **Understand student performance** on
 - Readily accessible and moderately complex texts in ELA
 - Previous grade level content that is a precursor to major content in math
- **Set meaningful, ambitious goals** for student learning targets

The INTERIM assessments are designed to allow school systems, schools, and teachers to:

- **Use results to make smart instructional decisions** to improve student learning
- **Identify student-specific and class wide patterns** in learning and misconceptions
- **Adjust instruction and target support** for students in need
- **Gauge progress** toward end-of-year goals

The K-2 FORMATIVE TASKS and the EAGLE item bank are designed to:

- **Provide quality questions/tasks** that target individual skills or texts
- **Integrate with tasks** from teachers' curriculum
- Aid and **enhance student learning** while allowing teachers to **make timely interventions to adjust instruction** throughout the year

LEAP 360 Resources

Many of these resources will be delivered in the last week of June.

Resource	Audience	Purpose
LEAP 360 Webpage	District supervisors, curriculum and technology coordinators, principals, teachers, students	Houses LEAP 360 resources including links to quick start guides, assessment guides, webinars, and more.
Non-Summative Assessment Calendar	District Test Coordinators, School Test Coordinators, and principals	Embeds LEAP 360 components into the instructional year in order to streamline assessment
Non-Summative Quickstart Guides	Curriculum and technology coordinators, principals, teachers, students	Provides links to resources including assessment guides, test setup guides, Educator Scoring instructions, and how to access reports
LEAP 360 Summer Tour	Curriculum and technology coordinators, DTCs, principals, teachers	Training to understand how to administer, score, and analyze student responses to LEAP 360 diagnostic and interim assessments for instructional planning and goal-setting purposes.
September Teacher Leader Collaboratives	District supervisors, curriculum coordinators, principals, teachers	Training to understand how to use reporting features of LEAP 360 assessments to support district, school, teacher, and student goal-setting.

LEAP 360 Reminders

- **LEAP 360 will be available** in full for all Louisiana educators and students **at no cost for the 2017-2018 school year**. Districts should anticipate a cost for the 2018-2019 school year.
- To access the LEAP 360 system, districts will be required to sign a Memorandum of Understanding (MOU) annually. This **MOU** has been [posted on the LDE website](#) and is **due July 7**.
- **Diagnostics and the first interim will be available in August for educator use.** Additional interim forms for use during the 2017-2018 school year will become available in fall 2017.
- The Department welcomes feedback to help deepen the content and improve the data results available. The Department will collect user feedback on all aspects of the system through a variety of methods (e.g., surveys, trainings, focus groups, etc.), or school systems can email their feedback at assessment@la.gov.

LEAP 360 Training Opportunities

- The LEAP 360 Summer Tour will be at a location near you just in time for the start of school.
- School System Leadership sessions will focus on test administration and other logistics.
- School Leadership and Teacher sessions will focus on test content and use of results.
- A new session titled [Leap 360 Summer Tour: Spotlight SLTs](#) has been added at each location. Target audience for this session includes district and school leaders, along with school-appointed teacher leaders.

Location	Date	School System Leadership Sessions	School Leadership and Teacher Sessions	Spotlight SLTs Sessions
Lafayette	July 26	Session 1 (9:30-11:00) Session 2 (12:00-1:30)	Session 1 (9:30-11:00) Session 2 (12:00-1:30)	11:00-12:00
Jefferson	July 28	Session 1 (9:30-11:00) Session 2 (12:00-1:30)	Session 1 (9:30-11:00) Session 2 (12:00-1:30)	11:00-12:00
Monroe	July 31	Session 1 (9:30-11:00) Session 2 (12:00-1:30)	Session 1 (9:30-11:00) Session 2 (12:00-1:30)	11:00-12:00
Baton Rouge	Aug 1	Session 1 (9:30-11:00) Session 2 (12:00-1:30)	Session 1 (9:30-11:00) Session 2 (12:00-1:30)	11:00-12:00

Please email assessment@la.gov with questions.



**Measuring Results:
2017-2018 LEAP 2025 Assessments**

2017-2018 Assessments: Grades 3-8 LEAP 2025

Grade	Subject	2017-2018	2018-2019
Grades 3 through 8	ELA and Math	Same Operational Blueprints with embedded field test	
	Science	Field test	Operational test with standard setting
	Social Studies	Same Operational Blueprints with embedded field test	

Information about operational blueprints for grades 3-8 ELA, math, and social studies can be found in the [Assessment Guides](#) for each grade/subject.

2017-2018 Assessments: High School Transition

Beginning in 2017-2018, **Louisiana is transitioning to five-level high school assessments**, which include:

- **Providing an English I exam, rather than English III** (which will phase out over time). This allows accurate assessment of ELA success in earlier years, and it also reduces testing in upper grades as students are exploring a variety of pathways.
- **Reporting a greater differentiation of performance and allowing high schools to earn recognition for three levels of performance** rather than two, as is true in elementary and middle schools
- **Allowing consistent measurement of achievement and growth/progress** from grade 3 through high school
- **Allowing consistency in graduation requirements.** The passing score is comparable. The second lowest achievement level is comparable across four and five level tests (Fair or Approaching Basic).

For more information, please refer to the frequently asked questions document available [here](#).

2017-2018 Assessments: High School Transition

The new LEAP 2025 tests (Algebra I, Geometry, English I, English II, US History) administered in 2017-2018 will be reported on the same scale using the same five-level performance standards as grades 3 through 8.

- Similar test designs as those used in grades 3 through 8
- Tests will be timed

Practice tests for LEAP 2025 Algebra I, Geometry, English I, English II, and US History **will be available this fall.**

- The **Biology EOC test in 2017-2018 remains the same** operational design as previous years. The Spring 2018 Biology EOC will include embedded field test items to create the new LEAP 2025 Biology assessment that will be administered in 2018-2019.
- The **English III EOC remains the same** operational design as previous years for those students needing English III to meet graduation requirements.

2017-2018 Assessments: High School Assessments by Cohort

Began high school...	Algebra I	Geometry	English I	English II	English III	Biology	US History
Prior to 2017-18	x	x		x	x	x	x
In 2017-18 and beyond	x	x	x	x		x	x

2017-2018 Assessments: High School Assessments 2018 and Beyond

School Year	Algebra I	Geometry	English I	English II	English III	Biology	US History
2017-2018	5 levels	5 levels	5 levels	5 levels	4 levels	4 levels	5 levels 4 levels*
2018-2019	5 levels	5 levels	5 levels	5 levels	4 levels	5 levels 4 levels*	5 levels
2019-2020	5 levels	5 levels	5 levels	5 levels	District admin	5 levels	5 levels

*The only exceptions are for graduating seniors and retesters (not enrolled in the course) who take the US History test in 2017-2018 and the Biology test in 2018-2019; they will be allowed to take the four-level test in order to receive in-window results.

2017-2018 Assessments: High School Assessments Results

School Year	Algebra I	Geometry	English I	English II	English III	Biology	US History
2017-2018	Fall results released in January, Spring results released in window	Fall results released in January, Spring results released in window	Fall results released in January, Spring results released in window	Fall results released in January, Spring results released in window	4 to 6 days	4 to 6 days	Summer 2018 for five levels 4 to 6 days for retesters
2018-2019	In window	In window	In window	In window	4 to 6 days	Summer 2019 for five levels 4 to 6 days for retesters	In window
2019-2020	In window	In window	In window	In window	District admin	In window	In window

2017-2018 Assessments: WorkKeys Updates

Changes to WorkKeys	
2016-2017 WorkKeys	2017-2018 WorkKeys
<p><i>Applied Mathematics, Locating Information, and Reading for Information:</i></p> <ul style="list-style-type: none"> • No longer available • Scores from these tests will not be combined with scores from updated tests for NCRCs 	<p>Updated tests ensure ongoing relevance and alignment to the changing skill requirements of today’s jobs: <i>Applied Mathematics, WorkKeys Graphic Literacy, and WorkKeys Workplace Documents</i></p> <ul style="list-style-type: none"> • Only scores from the updated tests will be used to qualify for an NCRC
Not available in Spanish	<p>All tests will be available in Spanish for ELLs</p> <ul style="list-style-type: none"> • “en español” will be stated on the NCRCs
Accommodated test time of 45 minutes	<p>Accommodated test time is now 55 minutes</p> <ul style="list-style-type: none"> • Available in Braille, Large Print, Reader’s Script, and Audio DVD
<p>\$8.00 per subtest \$7.00 per NCRC</p>	<p>\$9.00 cost per subtest is all inclusive</p> <ul style="list-style-type: none"> • Includes cost for printing and delivery of NCRCs

2017-2018 Assessment Resources: LEAP 2025 Assessment Guides

Assessment Guides are available in the [Assessment Guidance](#) library.

LEAP 2025	
ELA, Math, and Social Studies (grades 3-8)	Available Now; updates coming Fall 2017
Algebra I	
Geometry	
English I	
English II	
U.S. History	

End-of-Course	
English III U.S. History	Available now
Biology	Available now; updates coming Winter 2017-2018

Spring 2018 Field Test	
Grades 3-8 Science	Winter 2017-2018

2017-2018 Assessment Resources: LEAP 2025 Practice Tests

Information regarding the LEAP 2025 practice tests can be found in the [Practice Test Library](#).

All forms and answer keys for grades 3-8 math and ELA	Available now
Grades 3 and 4 PBT and grades 3-8 answer keys for social studies	Available now
Grades 3-8 CBT for social studies	Late Summer
Grades 3-8 Social Studies answer keys updated to include sample student responses	Fall 2017
Algebra I, Geometry, English I, English II, U.S. History answer keys and accommodated forms	Fall 2017

2017-2018 Assessment Resources: LEAP 2025 Practice Test Resources

The [Practice Test](#) Library includes a variety of guides and resources to help with administration of the practice tests.

Available Now

[Practice Test Quick Start Guide](#)

[Educator Scoring for Computer-Based Practice Tests](#)

[Reports for Computer-based Practice Tests](#)

Practice Test Guidance for [ELA](#), [Math](#), [Social Studies](#)

[LEAP 2025 Social Studies Assessment Framework](#)

Practice Tests Webinar for [school systems](#) and [teachers](#)

2017-2018 Assessment Resources: LEAP 2025 Additional Resources

ELA rubrics, mathematics equation builder guides and reference sheets, and social studies extended response checklists for the 2017-2018 LEAP 2025 assessments are available in the [Assessment Guidance](#) library.

LEAP 2025
Literary Analysis and Research Simulation Task Rubric: grades 3 , 4-5 , 6-10
Narrative Writing Task Rubric: grades 3 , 4-5 , 6-10
Equation Builder Guide: grades 3-5 , 6-8 , and high school
Mathematics Reference Sheets: grades 5-HS
Extended Response Checklists: grades 3-5 , 6-8 , U.S. History

2017-2018 Assessment Resources: EOC

Additional resources for the remaining EOC tests are still available in the [Assessment Guidance](#) Library.

End-of-Course
English III Writer's Checklist
Model Parenthetical Citations Page
English III Writing Rubrics
EOC Key Concepts for U.S. History

2017-2018 Assessment Resources: Online Tools Training (OTT)

LEAP 2025	
Math grade 3 ELA grades 3, 4-5, 6-8 Social Studies grades 3-4, 5-6, 7-8	Available now
Math grades 4-5, 6-7, and 8 (updated)	Summer 2017
Algebra I and Geometry	Fall 2017
English I and II	Fall 2017
U.S. History	Summer 2017

2017-2018 Assessment Resources: Online Tools Training (OTT)

EOC	
Biology	Available now Update in Winter
U.S. History	Available now Will be updated after Summer 2017 administration
English III	Available now as combined English II and III Will be updated Fall 2017 to be only English III

Technology Readiness: Updates

TSM Update

On **June 29, DRC will release an update to all TSMs and INSIGHT clients.** TSMs that are not set to automatically update will need to be manually updated. INSIGHT will be updated on the devices once accessed.

New TSM Release

- **DRC will release a new Central Office TSM during the 2017-2018 school year.**
- The new TSM will offer districts and schools additional tools to manage the TSM and devices during testing.
- Districts can use the currently installed TSM for the upcoming school year.
- **All TSMs will need to be updated to the new Central Office TSM by the start of the 2018-2019 school year.**
- More details on this update will be provided this Fall.

2017 Testing Device Requirements

The [Testing Device Requirements](#) for 2017 have been posted in the Assessment Library.

Teaching & Learning

Instructional Material Reviews

The Department conducts ongoing reviews of curricular materials to support school systems in adopting Tier 1 curricula in all core subjects.

Find the latest Tier 1 curricula below and on the [Annotated Reviews webpage](#).

Publisher	Title	Core Subject	Tiered Rating
Children's Literacy Initiative	Blueprint for Early Literacy, PreK	Early Childhood	1
Great Minds LLC, of DC	Eureka Math, Pre K	Early Childhood	1
Great Minds LLC, of DC	Wit and Wisdom, K-2	ELA	1
Open Up Resources	EL Education, Gr 1	ELA	1

District Action Steps: Please share this information with textbook adoption supervisors, curriculum directors, and educational technology staff and encourage publishers to submit their materials or contact LouisianaCurriculumReview@la.gov for more information.

Reminder: Staff, parents, and partners can participate in the review process through the Department's Instructional Materials Review [webpage](#).

Louisiana Student Standards for Science: Implementation

To support educators with the transition to new standards, the Department will provide substantial support with curriculum, local assessments, and professional development.

Area	Support and Timeline
Curriculum and Resources	<p data-bbox="465 594 1012 629">Instructional Materials Review</p> <ul data-bbox="465 644 1421 765" style="list-style-type: none"><li data-bbox="465 644 1136 679">• Rubric released and call for submissions<li data-bbox="465 686 1421 722">• Hiring and training of Teacher Leader Advisors—<i>June 2017</i><li data-bbox="465 729 1205 765">• First curriculum reviews released—<i>Fall 2017</i> <p data-bbox="465 822 842 858">New Standards Tools</p> <ul data-bbox="465 872 1383 1079" style="list-style-type: none"><li data-bbox="465 872 1271 908">• Connections to ELA and math standards—<i>posted</i><li data-bbox="465 915 813 951">• Key shifts—<i>posted</i><li data-bbox="465 958 1031 993">• Progressions of learning—<i>posted</i><li data-bbox="465 1001 1373 1036">• Middle school sample transition plan—<i>Week of June 26</i><li data-bbox="465 1043 1383 1079">• Sample scope and sequence documents—<i>Summer 2017</i>

Louisiana Student Standards for Science: PD Support

Area	Support and Timeline
Professional Development	<p>Self-Paced Learning: Live and recorded webinars on new standards</p> <ul style="list-style-type: none">Monday, June 26 at 9:00a.m. - LSS Science Series Part 2: Instructional ShiftsMonday, July 10 at 9:00 a.m. - LSS Science Series Part 3: Three-Dimensional LearningMonday, July 17 at 9:00 a.m. - LSS Science Series Part 4: Learning ProgressionsMonday, July 24 at 9:00 a.m. - LSS Science Series Part 5: Phenomenon-Based Instruction <p>Summer Opportunities</p> <ul style="list-style-type: none">Louisiana Tech and/or LSU Cain Center will partner with districts to provide district-specific summer training on the Louisiana Student Standards for Science. Contact louisianastandards@la.gov for more information. <p>Collaborations</p> <ul style="list-style-type: none">Sessions at 2017-2018 collaborations

Compass 2017-2018

In preparation for the upcoming school year, the Department has begun hosting trainings to help school systems and educators use new Compass resources. These resources will help school systems and educators continue to deepen Compass as a system for ongoing educator support.

A final webinar will be held on June 26 at 1:00 p.m. School system supervisors, principals, and Compass contacts are encouraged to attend.

- To join, go to <https://louisianaschools.adobeconnect.com/cis/>.
- Toll-free access number: 1-855-240-2575
- Participant PIN code: 89147656

Click [here](#) for the Compass 2017-2018 Teacher Leader Summit session for supervisors.

Contact compass@la.gov for more information or with questions.

English Language Arts Guidebooks 2.0 Updates

The Department continues to make updates to the ELA Guidebooks 2.0. The following updates were announced at the Teacher Leader Summit 2017 in New Orleans.

- The Department has **released [text purchase worksheets](#) for use with ELA Guidebooks 2.0**. The text purchase worksheets are individualized to each unit and allow schools and school systems to evaluate the number of texts and materials on hand and what they need to purchase.
- The Department **will use the following schedule for making revisions to the ELA Guidebooks 2.0 units**.
 - Minor edits (typos and adding exemplar responses): ongoing
 - Major edits (revising, removing, or adding lessons): June of each year***Districts should wait until July 1 to make copies of materials for the next school year.***
- The Department **has released [language tasks](#) for use with the ELA Guidebooks 2.0**. **Additional language tasks will be released this summer** prior to the start of the 2017-2018 school year.
- **LearnZillion has created “Let’s Set the Context Videos” for each guidebook unit** to support students who need additional background knowledge. [View an example](#).

Please contact classroomsupporttoolbox@la.gov with any questions.

Educator Workforce

2018 Teacher and Principal of the Year Finalists



2018 TEACHER OF THE YEAR FINALISTS

Rosemary Grimm	Bossier Parish
Lorraine Fedison-Winder	FirstLine Schools
Brenda Simmons	Jackson Parish
Sarah Gros	Lafayette Parish
Marcy Mahler	Lafourche Parish
Sarah Butler	Rapides Parish
Joshua John David Paul	St. Helena Parish
Angelina Drago	Tangipahoa Parish
Kimberly Eckert	West Baton Rouge Parish



2018 PRINCIPAL OF THE YEAR FINALISTS

Cleo Perry Jr.	East Baton Rouge Parish
Elizabeth Chatelain	Evangeline Parish
Shannon Foolkes	Calcasieu Parish
Bobbye Delaney	Cameron Parish
Twainna Calhoun	Ouachita Parish
Sandra Jones	Richland Parish
Sarah Allen	St. Martin Parish
David Gray	Union Parish
Thomas Byler	Vermilion Parish

TAT Renewal Appeals Process

In April, BESE approved a new process that allows the Teacher Certification Appeals Council (TCAC) to consider appeals relative to Temporary Authority to Teach (TAT) extensions through July 2018.

Appeals may be considered provided there is evidence that the teacher made a good faith effort to pass the required exams, met the standards of effectiveness, is recommended by the employing school system, will continue to be employed, and is teaching in a demonstrated shortage area.

TCAC will hear appeals relative to TAT renewals on the following dates in 2017:

- July 27
- November 30

The [application](#) for the TAT renewal and appeal is posted on the [Teach Louisiana web page](#).

Completed applications must be submitted no later than Tuesday, June 27, 2017 for consideration at the July 27th meeting.

Please reach out to sara.strickland@la.gov with any questions.

2016-2017 Teacher Exit Interview Data Collection Period

City, parish, and other local school boards are required by [state law](#) to report information about teachers who leave their roles. **Charter schools are not required to submit this data.**

Exit interview data for the 2016-2017 school year must be entered in the [data collection portal](#) by Friday, August 4, 2017. Please review the [Teacher Exit Interview Data Reporting Guide](#) for data entry instructions.

For questions about the exit interview process, please contact joni.lacy@la.gov.

To request login credentials for the Teach Louisiana website, please contact cindy.millard@la.gov.

Teacher Preparation: Believe and Prepare Expansion Grants

Today, BESE approved **\$2.2 million in grants to teacher preparation providers** that will:

- 1. Offer undergraduate and post-baccalaureate residencies in rural school districts.** These grants will be funded using Louisiana's federal **Teacher Incentive Fund (TIF)** monies
- 1. Establish or expand teacher preparation programs that increase the number of certified special education teachers.** These grants will be funded using **IDEA** funds.

Email believeandprepare@la.gov with questions.

Teacher Preparation: Believe and Prepare Expansion Grantees

Preparation provider	Partnering district(s)
Louisiana State University	West Baton Rouge
Louisiana Tech University	Bossier, Caddo, Jackson, Monroe, Ouachita
LSU - Shreveport	Bossier, Caddo
LSU - Alexandria	Concordia, Grant, and Rapides
Nicholls State University	Assumption
Northwestern State University	Desoto, Grant, Natchitoches, Red River, Sabine, West Carroll
Relay Graduate School of Education	Collegiate Academies
Southeastern Louisiana University	St. Helena
Teach Ascension Academy	N/A (design grant)
TNTP	Lincoln, Richland
University of Louisiana at Lafayette	Allen, St. Landry
University of Louisiana at Monroe	Monroe, Morehouse, Ouachita, Richland, West Carroll
University of New Orleans	N/A (design grant)

Graduation Pathways

Financial Aid Planning

As of June 16, 2017, 61 percent of Louisiana public school seniors had completed a FAFSA. Senior completion rate for the same week in 2016 was 53 percent. **This is an increase of over 7,000 students since 2013.**

Specific student-level data can be obtained by having a school system agreement with LOSFA. Contact robyn.lively@la.gov for more information.

Beginning with the 2017-2018 school year, each graduating senior will be required, as part of his or her individual graduation plan, to either

- 1) complete the [Taylor Opportunity Program for Students \(TOPS\)](#) application or the [Free Application for Federal Student Aid \(FAFSA\)](#),
- 2) declare a hardship, or
- 3) submit a [waiver to the local school system](#).

Additional Support: Lesson plans are available on the [financial aid homepage](#) .

Please email ldefinancialaid@la.gov with questions.

2017 Jump Start Super Summer Institute

2017 Jump Start Super Summer Institute (SSI) will be held July 17–21 at multiple locations in Lafayette, La. SSI provides teacher certification training for [Jump Start Statewide Industry-Based Certifications](#).

The Department will pay training costs and provide lunch for secondary instructors attending SSI. School systems are responsible for all travel expenses and a nominal registration fee (\$249/instructor). Career Development Funds (CDF) or 2016-2017 Carl Perkins Funds can be used to cover registration fees. School systems were invoiced in May for total registration fees.

All payments, regardless of funding, must be received at the address below no later than this Friday, June 23.

Louisiana Department of Education
Appropriation Control
ATTN: Dakora Foreman
P. O. Box 94064
Baton Rouge, LA 70804-9064

Please email JumpStart@la.gov with questions.

Grant Opportunity: Training Programs for Students Taking the Alternate Assessment

On June 7, the **Department released a [grant opportunity](#)** to establish local partnerships focused on building training programs to **prepare students who take the alternate assessment for post secondary employment and/ or post secondary educational opportunities.**

The grant is open to all Louisiana school systems and Institutes of Higher Education (IHE) willing to work collaboratively with other school systems and/or IHEs to create and implement new programs that prepare these students for postsecondary employment and/or educational opportunities.

Please see the Opportunity Grant [application](#) for specific details. [Applications](#) must be submitted to specialeducation@la.gov by July 10, 2017.

Call Summary

Call Summary

Month	Key Deadlines	Key Resources and Supports
June	<ul style="list-style-type: none"> • June: EOC results • June 23: Submit all payments for Jump Start SSI • June 27: Submit TAT renewal applications for consideration at July meeting • June 30: CATE system closes for CTE data collection • Late June: LEAP ELA/Math/Science results; LEAP online cleanup 	<ul style="list-style-type: none"> • June 26: Compass System Webinar at 1:00 p.m. • June 21: Statewide Early Childhood Webinar at noon • Week of June 26: Middle school sample transition plan for new science standards • June 26: LSS Science Series Part 2: Instructional Shifts at 9:00 a.m. • June 29: TSM update available
July	<ul style="list-style-type: none"> • July 5: eDirect Student Correction Online Cleanup • July 10: Submit grant applications for Building Training Programs for Students Taking the Alternate Assessment 	<ul style="list-style-type: none"> • July 10: LSS Science Series Part 3: Three-Dimensional Learning at 9:00 a.m. • July 17: LSS Science Series Part 4: Learning Progressions at 9:00 a.m. • July 17–21: 2017 Jump Start SSI • July 24: LSS Science Series Part 5: Phenomenon-Based Instruction at 9:00 a.m. • 2017-2018 Back-to-School Package
August	<ul style="list-style-type: none"> • August 4: Opt into the GOLD pilot • August 4: Teacher Exit Interview Data due 	