

# Louisiana Believes

---

**LEAP 360 in 2018-2019**  
**March Supervisor Collaboration**

# Outcomes

**By the end of today's session, you should be able to:**

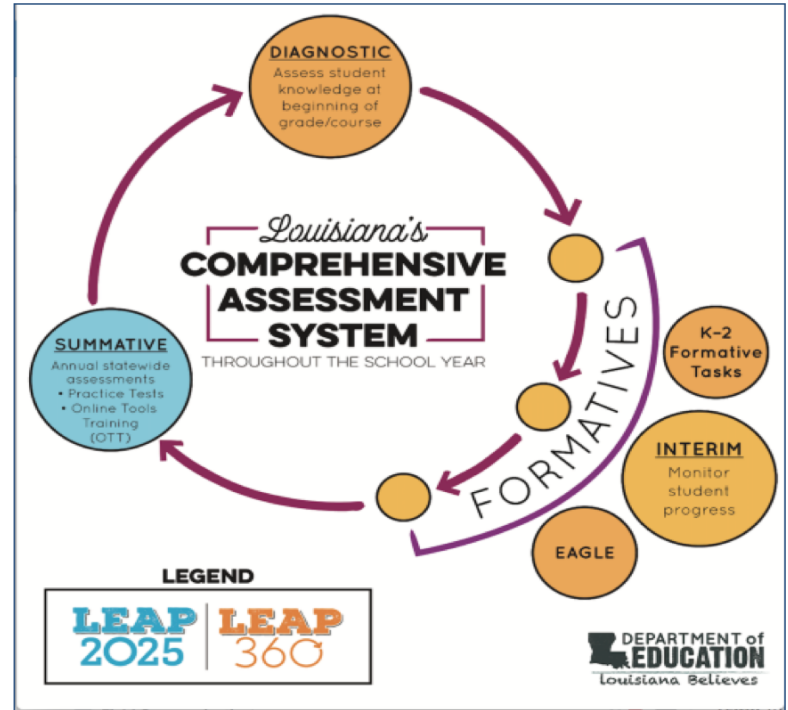
- Explain new tools being created to support districts in the use of LEAP 360 for 2018-2019
- Provide feedback on new resources
- Articulate next steps for LEAP 360 for 2018-2019

# Streamlining Assessment

There are three main purposes for classroom assessment:

1. Know where students are when they enter a classroom.
2. Monitor how students are learning content over the year.
3. Verify what students have learned.

LEAP 360 pairs with LEAP 2025 to reduce overall testing time while realizing all three purposes.



# Agenda

**By the end of today's session, we'll address these questions:**

- What new tools will be available for LEAP 360 for 2018-2019?
- What feedback do you have for district resources?
- What are my next steps?



# LEAP 360 Feedback

Feedback is being collected through multiple avenues including focus groups. Twelve focus groups including over 100 people were held in Ruston, Baton Rouge, and Crowley that included District Test Coordinators, School Test Coordinators, District Curriculum Staff, principals, and teachers from LEAs around the state.

Feedback is also being collected via site visits, network teams, phone calls, and email. Feedback can be emailed to [assessment@la.gov](mailto:assessment@la.gov).

Thousands of pieces of feedback have been collected in order to plan for improvements to LEAP 360 over the next few years.

# Feedback Summary

Feedback was collected through multiple avenues and prioritized into five priority areas.

- Data Management
- Educator Scoring
- Reporting
- EAGLE
- Content

# Improvements: Content

The following are improvements on content and resources.

- Teacher's Guide to LEAP 360
- A District's Guide to LEAP 360
- Mini-webinars or tutorials for teachers
- Parent Guides
- Math grades 6-7 alternate version of Interims for schools following the LA Eureka Implementation Guide
- Reading and Writing sessions on the ELA Diagnostics will be combined as one form. Writing will also remain as separate forms.
- Scoring Guides for Interim 1

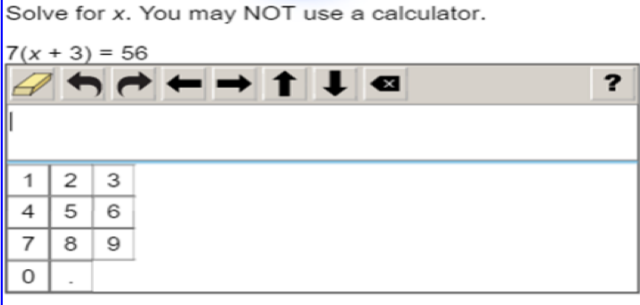
# Improvements: EAGLE

- New items types will be added.
- New SS, ELA, and Math will be added throughout the remainder of the 2017-2018 school year. Science items will be added for 2018-2019 beginning in fall of 2018.

# Improvements: EAGLE

Student Equation Editor

Solve for x. You may NOT use a calculator.

$$7(x + 3) = 56$$


1	2	3
4	5	6
7	8	9
0	.	

Drag and Drop

Directions: Click and drag the correct phase of the Moon into the diagram.

**Sun-Earth-Moon System**

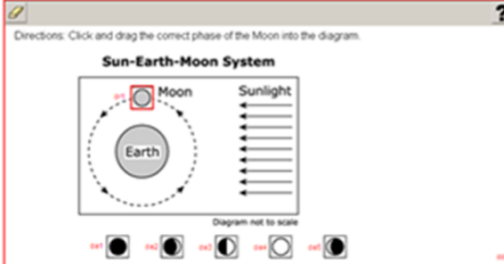


Diagram not to scale



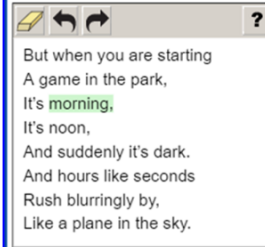
# Improvements: EAGLE

Hot Text

Read the dictionary definition.

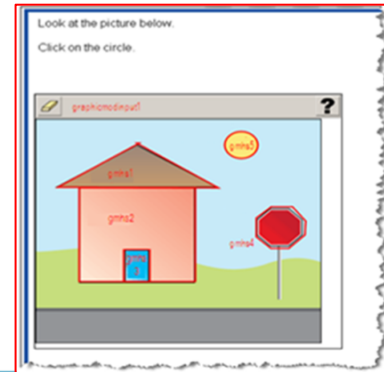
(adv.) in a manner almost too quick to see

Click on the word in the poem that **most** closely matches the given definition.



But when you are starting  
A game in the park,  
It's **morning**,  
It's noon,  
And suddenly it's dark.  
And hours like seconds  
Rush blurringly by,  
Like a plane in the sky.

Hot Spot



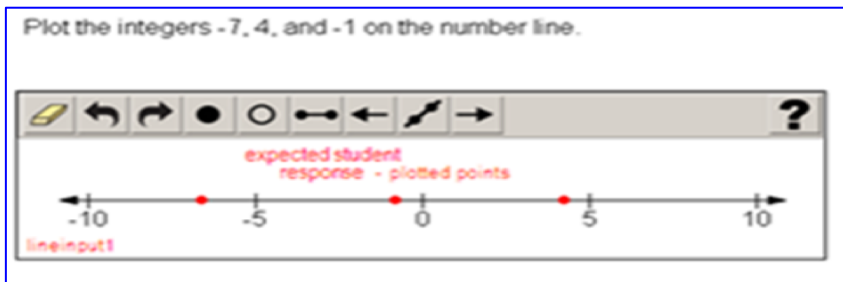
Look at the picture below.  
Click on the circle.

gms1  
gms2  
gms3  
gms4

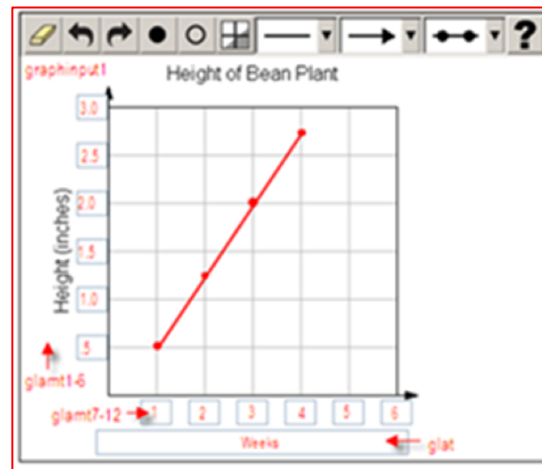
The screenshot shows a graphics editor window titled 'graphics01' with a toolbar and a question mark icon. The main canvas displays a scene with a red house, a yellow sun, and a red stop sign. The scene is divided into four hot spots labeled 'gms1' (roof), 'gms2' (house body), 'gms3' (sun), and 'gms4' (stop sign). The entire scene is enclosed in a red border with a jagged, torn-paper edge effect.

# Improvements: EAGLE

Line Graph



Coordinate Graph



# Agenda

**By the end of today's session, we'll address these questions:**

- What new tools will be available for LEAP 360 for 2018-2019?
- What feedback do you have for district resources?
- What are my next steps?

# Feedback for A District's Guide to LEAP 360

A District's Guide to LEAP 360 will be developed for district level administrators to plan for implementation.

We need your feedback in these three areas:

- Structure
- Components of each section
- Indicators of ideal implementation

# Agenda

**By the end of today's session, we'll address these questions:**

- What new tools will be available for LEAP 360 for 2018-2019?
- What feedback do you have for district resources?
- What are my next steps?



# LEAP 360 (2018-2019)

The Department is preparing for the second year of LEAP 360 implementation. School systems that signed a LEAP 360 Memorandum of Understanding (MOU) for the 2017-2018 school year may choose to continue using LEAP 360 through June 30, 2019, under the same terms and conditions.

LEAP 360 will be available to districts in the 2018-2019 at no cost.

Year two provides school systems with an opportunity to:

- re-evaluate existing practices,
- reduce duplicative testing, and
- transition to a more comprehensive assessment system that yields valid and reliable information on student performance throughout the school year.

# LEAP 360 (2018-2019)

## Next Steps

- The Department is continuing to gather feedback from school systems and school level users through focus groups, site visits, and [assessment@la.gov](mailto:assessment@la.gov). Enhancements across usability, administration, and reporting will be implemented for the 2018-2019 school year.
- To opt-in and amend your school system's existing agreement, each Superintendent must sign an amendment to the original agreement.
- Please click [here](#) to download the **LEAP 360 MOU Amendment (2018-2019)** form. Complete, sign, and return an electronic copy to [assessment@la.gov](mailto:assessment@la.gov) by **July 7, 2018**.

**Note:** School systems should anticipate a cost for the 2019-2020 school year.

# Next Steps

- Submit the 2018-19 LEAP 360 MOU by July 7, 2018.
- Review LEAP 360 for 2018-2019 improvements with district staff.
- Plan to send participants to LEAP 360 sessions at summit.
- Use the [assessment audit resources](#) to begin planning LEAP 360 implementation for next school year.

Please contact [assessment@la.gov](mailto:assessment@la.gov) with questions.