

# Louisiana Believes

---

**District Planning Call  
March 8, 2017**

# Agenda

## **I. 2017-2018 District Planning Process**

- A. Early Childhood
- B. High Quality Teaching
- C. High School Pathways

## **II. ESSA**

## **III. 2016-2017 Action Steps**

## **IV. Call Summary**

The Department recommends the following supervisors attend this call:

- Curriculum and Instruction
- District Test Coordinators
- Accountability
- Technology
- Early Childhood
- High School
- Career and Technical Education
- Principal and Teacher Leader

# Early Childhood

# Early Childhood: 2017-2018 Priorities

School systems will continue to help prepare all children for kindergarten by:



Providing all classrooms with accurate CLASS observations and actionable feedback (if district is Lead Agency only)



Supporting sites to implement Tier 1 curricula and improve instructional quality



Improving success for families by strengthening coordinated enrollment processes

# Early Childhood: Phase 2



**PHASE 2:**  
**Plan & Align Resources**

During Phase 2 of the 2016-2017 academic planning process, early childhood programs and lead agencies should focus on clear strategies for improvement targets that align resources across sites, programs, and the community.

- Site Leaders need the opportunity to collaborate and identify gaps that are common within their program
- Program leaders should work together to align resources for common targets across the community.

## Phase 2 Planning: Early Childhood Programs

In order for Site Leaders to collaborate and identify gaps that are common within their program, they need to:

- Meet with preK teachers individually and as a group to:
  1. *Ensure that they understand the CLASS™ observation results and feedback for their classroom and for the school;*
  2. *Discuss and agree on the identified opportunities for change; and*
  3. *Generate targets, specific strategies, and timelines for improvement.*
- Consult with the preK coordinator to know the expectations for their site's involvement in the community's coordinated enrollment process.
- Support preK teachers to implement the school system's tier 1 curriculum in early childhood classrooms.

## Phase 2 Planning: Lead Agencies

Lead Agencies should use monthly meetings to maintain ongoing dialogue with program partners that is focused on improvement targets and strategies by:

- setting specific Community Network targets for improvement based on the 2015-2016 Practice Performance Profiles and fall 2016 CLASS™ results;
- securing commitment from partners for specific actions and/or resources aimed at the improvement targets; and
- assisting partners with planning specific strategies for the improvement targets at their sites.



**High Quality Teaching:  
Curriculum, Assessment & Professional Development**



# Curriculum, Assessment & PD: 2017-2018 Priorities

School systems will build on and deepen the academic work they have already done to improve instruction in every classroom. Specifically, school systems should:



**Choose high-quality curricula in all subject areas and grade levels, including math, English language arts, early childhood, and social studies**

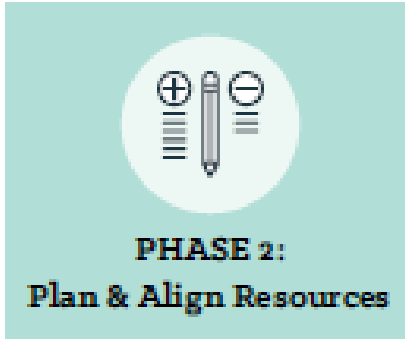


**Streamline the use of high-quality assessments to reduce overall testing and improve the quality of tools used**



**Provide regular, ongoing professional development for educators that is rooted in a curriculum and informed by student work**

# Curriculum, Assessment and PD: Phase 2



**During Phase 2 of the 2016-2017 academic planning process, school systems should:**

- Adopt a tier 1 curriculum in math, ELA, social studies and early childhood.
- Select a small number of standards-aligned, non-summative assessments; eliminate non-aligned and redundant assessments.
- Select curriculum-centered professional development using the PD Vendor Guide, and create a year-long scope and sequence for trainings.
- Institute school-based learning groups (e.g. PLCs) and focus meetings on examining student work and use of the curriculum.
- [Align 2017-2018 budget to fund these initiatives and projects.](#)

# Resources for Phase II Planning: Instructional Material Reviews

The Department conducts ongoing reviews of curricular materials to support school systems in adopting Tier 1 curricula in math, ELA, social studies and early childhood.

**New! Tier 1 ELA full course instructional materials and math benchmark assessments have been added to the website.** Find Tier 1 curricula available on the [Annotated Reviews webpage](#).

Publisher	Title	Core Subject	Tiered Rating
Pearson	myPerspectives, Gr 6-8	ELA	1
Pearson	myPerspectives, Gr 9-12	ELA	1
ANet (Achievement Network)	Math Interim Assessments, Gr K-5	Math	1
ANet (Achievement Network)	Math Interim Assessments, Gr 6-8	Math	1

**District Action Steps:** Please share this information with textbook adoption supervisors, curriculum directors and educational technology staff.

**Reminder:** Staff, parents, and vendors can participate in the review process through the Department's Instructional Materials Review [webpage](#).

# Resources for Phase II Planning: Louisiana Student Standards for Science

During their meeting today, BESE approved the new [Louisiana Student Standards for Science](#). These standards were developed by a group of educators and scientists that represented 41 school districts, five charter schools, 20 organizations, six universities, and the Board of Regents.

These workgroups have spent many hours drafting the standards, reviewing public comment, revising the drafts, meeting with committee members to discuss their work, and meeting with educators in the field to solicit feedback.

- Each workgroup member spent an average of 140 hours attending review meetings.
- Each workgroup member spent an average of 40 hours independently researching and reviewing drafts of standards.
- Committee chairs spent 80 hours in addition to the meetings, on average, preparing for meetings, reviewing materials, and doing independent research.
- Workgroup members met for 17 days of in-person meetings.
- Workgroup members spent over 10,000 total hours working on the Louisiana Student Standards for Science.

# Overview of Louisiana's Science Standards

As tasked, the workgroups drafted a set of standards that:

- define what a student should know or be able to accomplish at the end of a specific time period, grade level or completion of a course;
- represent the knowledge and skills needed for students to successfully transition to postsecondary education and the workplace;
- build on skills learned in previous years and avoid repetition from year to year; and
- connect across grades and within grades.

# Louisiana Student Standards for Science: Implementation

To support educators with the transition to new standards the Department will provide substantial support with curriculum, local assessments, and professional development.

Area	Support and Timeline
Curriculum and Resources	<p data-bbox="465 594 1064 629">Instructional Materials Review</p> <ul data-bbox="465 651 1769 801" style="list-style-type: none"><li data-bbox="465 651 1586 686">• Rubric released and call for submissions - <i>March 2017</i></li><li data-bbox="465 708 1769 743">• Hiring and training of Teacher Leader Advisors- <i>April/May 2017</i></li><li data-bbox="465 765 1392 801">• First curriculum reviews released - <i>Fall 2017</i></li></ul> <p data-bbox="465 879 880 915">New Standards Tools</p> <ul data-bbox="465 936 1624 1143" style="list-style-type: none"><li data-bbox="465 936 1547 972">• Connections to ELA and math standards - <i>April 2017</i></li><li data-bbox="465 993 1547 1029">• Key shifts and instructional implications - <i>April 2017</i></li><li data-bbox="465 1051 1489 1086">• Middle School sample transition plan - <i>June 2017</i></li><li data-bbox="465 1108 1624 1143">• Sample scope and sequence documents - <i>Summer 2017</i></li></ul>

# Louisiana Student Standards for Science: Implementation

Area	Support and Timeline
Professional Development	<p data-bbox="388 434 780 476"><b>Self-paced Learning</b></p> <ul data-bbox="388 496 1696 544" style="list-style-type: none"><li data-bbox="388 496 1696 544">• Live and recorded webinars on new standards - <i>May - July 2017</i></li></ul> <p data-bbox="388 594 678 636"><b>Collaborations</b></p> <ul data-bbox="388 648 1174 748" style="list-style-type: none"><li data-bbox="388 648 1174 691">• Session at March 2017 collaboration</li><li data-bbox="388 705 1174 748">• Sessions at 2017-2018 collaborations</li></ul> <p data-bbox="388 798 861 841"><b>Teacher Leader Summit</b></p> <ul data-bbox="388 852 1479 899" style="list-style-type: none"><li data-bbox="388 852 1479 899">• Multiple 2-day and 1-day institutes at the TL Summit</li></ul> <p data-bbox="388 949 552 992"><b>Vendors</b></p> <ul data-bbox="388 1003 1779 1215" style="list-style-type: none"><li data-bbox="388 1003 1779 1103">• The Department works with vendors, including local Universities, to align trainings to the new standards</li><li data-bbox="388 1118 1483 1160">• Multiple vendors offering intensive summer sessions</li><li data-bbox="388 1175 1412 1215">• Vendors offering ongoing coaching opportunities</li></ul>

# Louisiana Student Standards for Science: Implementation

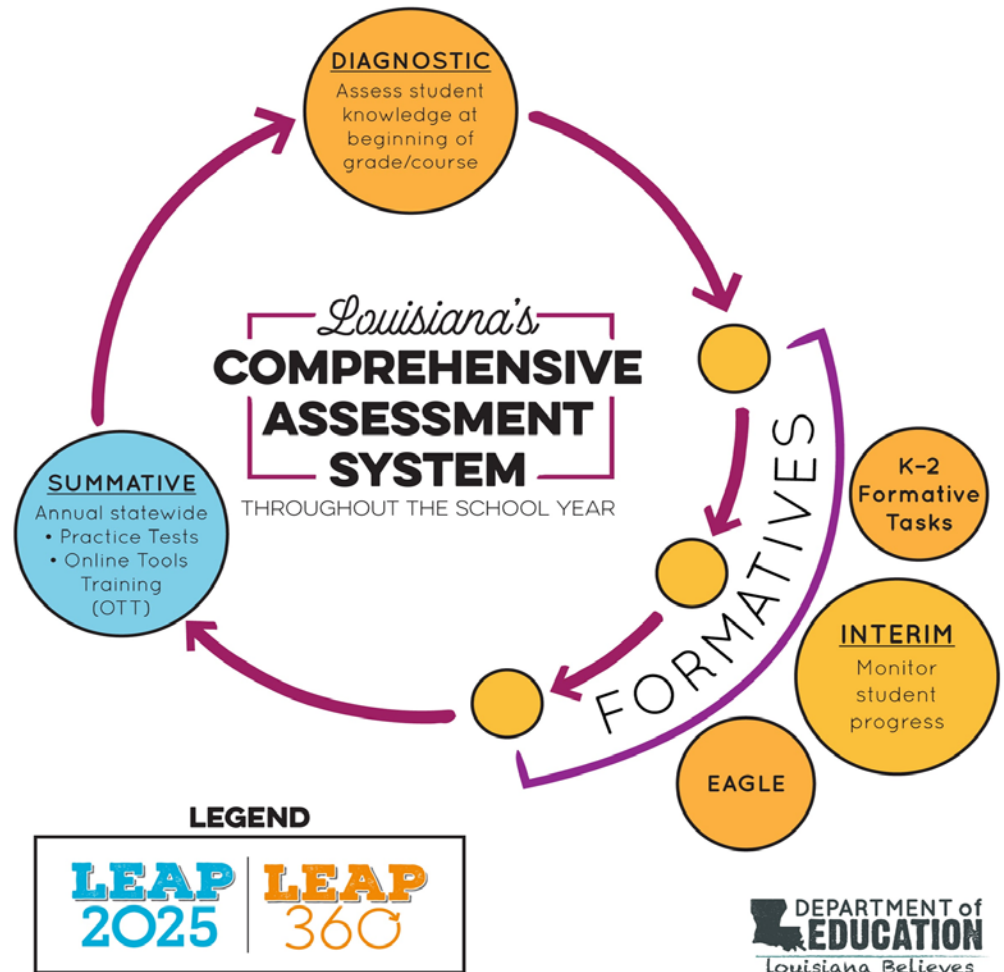
Area	Support and Timeline
Assessments	<p data-bbox="484 451 962 486"><b>Summative Assessment</b></p> <ul data-bbox="484 515 1464 686" style="list-style-type: none"><li data-bbox="484 515 981 558">• Field test- spring 2018</li><li data-bbox="484 579 1122 622">• Operational test- spring 2019</li><li data-bbox="484 644 1464 686">• Platform the same as ELA, Math, Social Studies</li></ul> <p data-bbox="484 772 962 808"><b>EAGLE Assessment Tool</b></p> <ul data-bbox="484 836 1779 1036" style="list-style-type: none"><li data-bbox="484 836 1779 936">• Teacher Leader Advisors will help create sample assessment items, hired in April/May 2017 and trained during the summer</li><li data-bbox="484 943 1750 1036">• EAGLE items created throughout the 2017-2018 summer and school year</li></ul>



# Resources to Support Phase II Planning: Louisiana's Comprehensive Assessment System

The Department is working to build a comprehensive assessment system of formative, summative and diagnostic assessments that are aligned to Louisiana's Student Standards.

This system will provide school system leaders, principals and teachers with the tools needed to effectively and efficiently assess student learning.



# LEAP 360

## LEAP 360 is a tool to help:

- **Teachers** understand a more complete picture of student performance at the beginning, throughout, and end of the year.  
This understanding helps teachers
  - adjust their instruction to help all students achieve
  - set meaningful, yet ambitious, goals for student learning
  - monitor learning toward that goal
- **Principals** identify throughout the system where additional support is needed.  
Providing information to focus educators on the learning that matters most for students
- **Districts** identify throughout the system where additional support is needed.  
Providing tools that help districts monitor progress toward goals

# 2017-2018 Comprehensive Assessment System

Tool	Content Area	Grade/Course	Includes	Recommended time of year to be administered	Reporting
Diagnostic	ELA Math	3-8, Algebra I, Geometry, English I, English II	1 Form	Beginning of year/course	Student, Class, School, District, State
Interims	ELA Math	3-8	2 Forms	ELA Form 1-late October Math Form 1-December Form 2-March	Student, Class, School, District, State
		Algebra I, Geometry, English I, English II	3 Forms	Form 1-October Form 2-January Form 3-March	
<b>Formative</b>					
K-2 Tasks	ELA & Math	K, 1, 2	32 tasks (16 ELA, 16 math)	throughout year, guidance provided	N/A
EAGLE	ELA, Math, Sci, SS	K-HS		throughout year	Performance, Test Session, Statistic
<b>Summative</b>					
End-of Year/Course (LEAP 2025)	ELA, Math, Sci, SS	3-8, Alg I, Eng I, Geom, Eng II, Bio, US History	multiple forms spiraled at student level	April/May	Student, Class, School, District, State

# Upcoming LEAP 2025 & LEAP 360 Assessment Resources

The following tools will be available to support teachers and students with upcoming diagnostic, interim and summative assessments.

Assessment Item	Description
<a href="#">2017-2018 Assessment Guides</a>	<b>Coming Summer 2017:</b> provide more detailed information about the test design and include samples illustrating the various item types
<a href="#">Diagnostic Quick Start Guide</a>	<b>Summer:</b> provides all of the resources needed to access the diagnostics, diagnostic guidance documents, prepare for online administration, score the diagnostics, and access the computer-based reports.
<a href="#">Interim Quick Start Guide</a>	<b>Summer:</b> provides all of the resources needed to access the interims, interim guidance documents, prepare for online administration, score the interims, and access the computer-based reports.

# Funding Support for Phase II Planning: Supporting Struggling Schools

Louisiana's School Redesign Summit brought together over 500 school system and partner organization representatives to brainstorm ideas for redesigning struggling schools.

In order to allow school systems to learn more about potential partner organizations before making a decision about a long term partnership, the Department is offering the School Redesign Planning Grant. Thirty applications including 29 unique partner organizations were received in Round 1.

- **Round 2 applications are due on March 15, 2017 in order to receive funding by April BESE.**
- The grant allocations will range from \$15,000-\$50,000 to fund short term exploration projects with partner organizations.
- A list of eligible schools and the application can be found on LDE's school redesign [webpage](#).

At the March Supervisor Collaborations school systems will have an opportunity to get an update on the School Redesign process. The overall School Redesign strategy, planning grant, and the School Redesign Grant itself will be covered.

*For additional information please contact your Network Leader or [hunter.brown@la.gov](mailto:hunter.brown@la.gov).*

# In-Person Support for Phase II Planning: March Supervisor Collaborations

Sessions at the [March Supervisor Collaborations](#) will focus on topics, resources, and tools to help school systems create their academic plans for the 2017-2018 school year (phase two in the [School System Planning Guide](#)). **Please register for this event by Friday, March 10.**

## Dates & Locations:

- March 14: Jefferson
- March 15: Baton Rouge
- March 16: Ruston

The Department recommends that the following supervisors attend the March Collaborations:

- Accountability
- Curriculum & Professional Development
- Teacher Leader Coordinators
- Special Education
- Early Childhood Lead Agency Representatives
- School Business Officials
- Data Managers.

Contact [DistrictSupport@la.gov](mailto:DistrictSupport@la.gov) with questions.

# In-Person Support for Academic Planning: 2017 Teacher Leader Summit

**SAVE THE DATE:** The 2017 Louisiana Teacher Leader Summit will take place **June 6-9 at the Morial Convention Center in New Orleans**. This event will bring together 5,000 educators and content experts from across the state to share their knowledge, learn new skills, and prepare for the upcoming 2017-2018 school year.

## Summit Objectives

- **Improve the everyday practice of educators in Louisiana** by building their knowledge and skill in key areas related to their role
- **Provide opportunities for educators to collaborate and share best practices**
- **Introduce high-quality resources and professional development** that can be adopted and scaled in schools and districts across Louisiana
- **Foster a culture that celebrates and engages** educators and **empowers and inspires** them to take on an even greater leadership role within their classrooms, schools and districts

# 2017 Teacher Leader Summit: Tentative Schedule

## Tuesday, June 6, 12:00-5:00

- School system/LEA supervisors
- School counselors
- Early childhood lead agency supervisors
- Principals

## Wednesday, June 7, 8:30-5:00<sup>¥</sup>

- School system/LEA supervisors
- School counselors
- Early childhood lead agency supervisors
- Principals
- Teacher Leaders
  - ELA\*
  - Math\*
  - Social studies\*
  - Science\*
  - ELL
  - SpEd

## Thursday, June 8, 8:30-5:00<sup>¥</sup>

- Plenary
- Principals<sup>†</sup>
- Teacher Leaders
  - ELA
  - Math\*
  - Social studies
  - Science\*
  - ELL
  - SpEd
- Teacher Leader-led sessions for all subjects and grades

## Friday, June 9, 8:30-11:45

- Teacher Leader-led sessions for all subjects and grades

<sup>¥</sup> Lunch provided

\* Full-day, vendor-led sessions for Teacher Leaders; pre-registration required

<sup>†</sup> Full-day Eureka Institute for principals; pre-registration required



# 2017 Teacher Leader Summit: Registration and Session Development

## Registration

Registration for the [2017 Teacher Leader Summit](#) will open Thursday, April 20 and will close Monday, May 15. Each LEA will receive an allotment of seats similar to 2016; LEAs will be able to request additional seats as space permits.

## Apply to Lead a Session at the Summit

The Louisiana Department of Education (LDOE) is looking for knowledgeable educators to share resources and best practices with others around the state by designing and facilitating sessions at the 2017 Teacher Leader Summit. All types of Louisiana educators – classroom teachers, school and childcare center administrators, LEA and lead agency administrators – are welcome to apply to lead sessions at the Summit.

Interested parties must submit their [application](#) online on or before Monday, April 3.

# 2017 Teacher Leader Summit: Additional Information Coming Soon

The Department encourages LEAs' Teacher Leader coordinators to attend the **Curriculum Implementation session at the [March Supervisor Collaboration](#)** to learn more about the Summit.

The Department will share additional information about the Summit throughout April via LEAs' Teacher Leader coordinators and the Department's newsletters.


Click [here](#) to sign up to receive the Teacher Leader newsletter.

Contact [LouisianaTeacherLeaders@la.gov](mailto:LouisianaTeacherLeaders@la.gov) with questions related to the 2017 Teacher Leader Summit.

# Upcoming Resources for Phase II Planning

The following additional resources will be released this spring to support Phase 2 of the academic planning process:

- **School System Professional Development Planning Guide:** *to be released at the March collaborations*
- **Updated [PD Vendor Guide](#):** *to be released at the March collaborations*
- **Updated SLT template and samples:** *coming this spring*
- **New ELA Guidebook 2.0 units:** *coming this spring*
- **Updated Principal Guidebook:** *coming this spring*
- **Teacher and parent resources regarding the new LA Connectors:** *coming this summer*



High Quality Teaching:  
Leadership Development & Talent Management  
Resources

# Leadership Development & Talent Management: 2017-2018 Priorities

A skilled teaching force is necessary to achieve academic success with students. To this end, school systems and schools will create a “talent pipeline” at every level of the system. Specifically, school systems should:



## **Establish and/or expand teacher preparation partnerships that:**

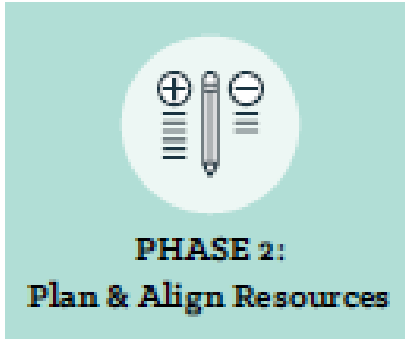
- Meet identified workforce needs, as portrayed in annually-released educator workforce reports;
- Include yearlong teaching residencies in which aspiring teachers train alongside expert mentor teachers;
- Identify and develop mentor teachers who are prepared to support aspiring and new teachers.



## **Identify excellent educators and create professional growth experiences to:**

- Grow and leverage teacher leaders effectively in all content areas; and
- Provide challenging experiences to help principals improve their ability to coach and support educators.

# Leadership Development & Talent Management: Phase 2



During Phase 2 of the 2016-2017 academic planning process, school systems should:

- Identify excellent teachers to serve in leadership roles ([Teacher Leader](#), mentor, principal).
- Train [principals](#) to implement a system of content-rich [goal setting, observation, feedback, and school-based support](#).
- Establish or deepen partnerships with [teacher preparation providers](#) to meet workforce needs.
- Make [workforce decisions](#) (e.g., compensation, tenure) to retain highly-effective teachers and leaders.
- [Align 2017-2018 budget to fund these initiatives and projects](#).

# Principal Support Grant Application

As the leaders of instruction in their schools, principals take on critical work, like building systems for school-wide collaboration focused on examining student work and use of curriculum. To support principals with this work, the **Department released the [Principal Support Grant](#) application on March 1.**

This grant will support initiatives that help principals improve their instructional leadership.

Examples of how these funds can be used include:

- salaries for TAP teacher leaders
- ongoing, hands-on support for TAP implementation
- funding principal, assistant principals, aspiring teacher leader, and district personnel participation in the Principal Fellowship program.

## **Grant Timeline:**

- **Supervisor Collaborations and consultations (March - April)**
- **Grant application due to the Department (April 7)**
- **School systems notified of grant status (End of April)**

Please email your Network contact or [compass@la.gov](mailto:compass@la.gov) if you are interested in setting up a consultation for the grant application process.

# Believe and Prepare Teacher Preparation Transition Guide

The [Teacher Preparation Transition Guide](#) outlines the transition timeline and supports available to preparation providers and their school system partners as they align preparation experiences and partnerships to meet BESE's updated teacher preparation program requirements. The guide was **updated in February** to include:

- [Believe and Prepare Newsletter](#)
- [Tomorrow's Teacher: A Believe and Prepare Educator Blog](#)
- [Funding Technical Assistance Guidance](#)
- [Believe and Prepare Residency Expansion Grant Opportunity](#)
- [Partnership Tools](#)

Save the date for the next **Believe and Prepare Meeting** scheduled on **May 1, 2017**.

For more information, please contact [BelieveAndPrepare@la.gov](mailto:BelieveAndPrepare@la.gov).



# Believe and Prepare Transition Funding Supports

By July 2018, all teacher preparation programs in Louisiana will include a yearlong classroom residency alongside an experienced mentor teacher. This chart summarizes the current funding supports in place to support this transition.

## Believe and Prepare Transition Funding Supports

Formula Funding	<ul style="list-style-type: none"><li>• \$1.5 Million approved in January</li><li>• Funding technical assistance guidance is available in the updated <a href="#">transition guide</a> on page 7</li></ul>
High-Cost Needs Pool Applications	<ul style="list-style-type: none"><li>• BESE will be asked to consider allocations between \$15,000 and \$25,000 for all proposals in March and April</li></ul>
Residency Expansion Grants	<ul style="list-style-type: none"><li>• Released in mid-February to support the expansion of teacher preparation programs that meet workforce needs, particularly in rural geographically remote districts and in special education</li><li>• <b>UPDATED Notice of Intent due March 24; full applications due April 28</b></li></ul>

For more information, please contact [BelieveAndPrepare@la.gov](mailto:BelieveAndPrepare@la.gov).

# 2016-2017 District Educator Workforce Report

In order to support school and school system leaders in making informed workforce decisions to retain highly-effective teachers and leaders, **the Department will release the 2016-2017 District Educator Workforce Reports the week of March 13.** These reports provide school system leaders with a detailed overview of decisions they are charged with making regarding the educators and education leaders in their districts.

Data in the Educator Workforce Report is organized according to the following sections and may be used to inform decisions related to:

- **Recruiting and hiring**
- **Evaluating results**
- **Compensating teachers and school leaders**
- **Retaining, promoting, and granting tenure**

The Educator Workforce Report will be discussed at the March Supervisor Collaborations. Reports will be shared in each district's FTP. Reports will *not* be posted publicly.

Contact [Sara.Strickland@la.gov](mailto:Sara.Strickland@la.gov) with questions.

# Workforce Report Improvements

Report Section	Adding	Removing
Overall	<ul style="list-style-type: none"> <li>• Data on high-needs schools</li> <li>• “Regions” defined on map</li> </ul>	<ul style="list-style-type: none"> <li>• Data on schools with high/low percentages of minority, special education, and economically disadvantaged students</li> </ul>
Educator workforce overview *new section	<ul style="list-style-type: none"> <li>• Teacher certification status by school letter grade</li> <li>• Data relative to equitable access to excellent educators</li> </ul>	
Recruiting and hiring	<ul style="list-style-type: none"> <li>• Teacher hired in LEA, including practitioner’s license</li> <li>• Break out teacher hired from preparation programs by undergraduate and post-baccalaureate</li> </ul>	
Compensation		<ul style="list-style-type: none"> <li>• Salary information for core versus non-core teachers</li> </ul>
Retaining and granting tenure	<ul style="list-style-type: none"> <li>• School leader departure trends</li> <li>• Retention rates for graduates of teacher preparation programs</li> </ul>	
Appendices	<ul style="list-style-type: none"> <li>• Additional site-level information</li> </ul>	

# High School Pathways

# High School Pathways: 2017-2018 Priorities

School systems will continue to support student graduation pathways and postsecondary planning through individual graduation planning. Specifically, school systems should:



Identify and offer students TOPS University Pathways that ensure students going to four-year colleges have taken a true college preparatory curriculum in high school and have every chance possible to receive TOPS

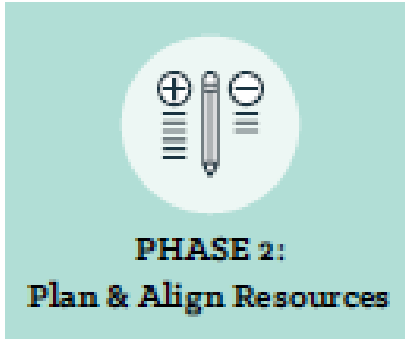


Identify and offer students Jump Start TOPS Tech Pathways with career courses and workplace experiences leading to the attainment of an industry credential and eligibility for TOPS Tech



Assist all students with financial aid planning to remove the financial barriers to accessing postsecondary education and training

# High School Pathways: Phase 2



During Phase 2 of the 2016-2017 academic planning process, school systems should:

- Strengthen and expand [career and college pathway options](#) for students by increasing the number of pathways offered at each high school.
- Work with regional economic development boards to identify [career pathways](#) that align to regional and statewide needs.
- Ensure that each student has completed the appropriate [financial aid package](#) for post secondary opportunities.
- Create a plan for graduation pathways for students with disabilities in all high schools using the [alternative graduation pathway guidance](#).
- [Align 2017-2018 budget to fund these initiatives and projects.](#)

# Individual Graduation Plan Pathway Planning

Beginning in the Spring of 2016, professional school counselors began working with the 2018 graduation cohort to guide the selection of diploma pathways that aligned with students' academic and career interests.

Upon selection, the diploma pathway is uploaded into STS as part of the Individual Graduation Planning (IGP) process. Students entering 9<sup>th</sup> grade beginning in 2014-2015 will select from **TOPS University** or **TOPS Tech Jump Start Career Diploma**.

The following tools are available to support professional school counselors in the development and review of IGPs.

- [Graduation Pathway Document](#)
- [All Things Jump Start Web Portal](#)
- [High School Planning Guide](#)
- [Financial Aid Documents](#)
- [Alternative Graduation Pathway Access](#)
- [Counselor Toolbox](#)

Please email [JumpStart@la.gov](mailto:JumpStart@la.gov) with questions.

# Save the Date: 2017 Jump Start Super Summer Institute

The **2017 Jump Start Super Summer Institute (SSI)** will provide teacher certification training for [Jump Start Statewide Industry Based Certifications](#).

- **Date:** July 17 – 21 from 8:00am – 5:00pm
- **Location:** South Louisiana Community College (Lafayette, La)
- **Registration in** [Coursewhere](#)

The Department will pay training costs as well as provide lunch for secondary instructors attending SSI. School systems are responsible for all travel expenses and a nominal registration fee (\$249.00/instructor) for which they may use their Career Development Funds (CDF) or 2016-2017 Carl Perkins Funds.

Please email [JumpStart@la.gov](mailto:JumpStart@la.gov) with questions.



# Financial Aid Planning

**As of February 17, 2017, 33% of Louisiana public school seniors applications have completed the FAFSA.** FAFSA completion rate for seniors the same week in 2016 was 5%.

Through the end of the spring, Networks, school systems and high schools will receive weekly breakdowns of the number of FAFSA applications submitted and completed for the 2016-2017.

- Specific school data can be obtained through Network contacts or by contacting [LDEFinancialAid@la.gov](mailto:LDEFinancialAid@la.gov).
- Specific student level data can be obtained by having a district agreement with LOSFA. Contact [robyn.lively@la.gov](mailto:robyn.lively@la.gov) .

Visit the [financial aid homepage](#) for more information or email [ldefinancialaid@la.gov](mailto:ldefinancialaid@la.gov) with questions.

ESSA

# Release of ESSA Draft Plan

- On February 20, the Department posted for public comment a [draft copy of a plan](#) to comply with ESSA. This draft document, developed through nine months of intensive meetings and public dialogue, will be posted for comment to the [Department's website](#) until the end of March so that the Department can continue to receive public input.
- Please encourage principals, teachers and parents to submit feedback on the updated framework by emailing [essalouisiana@la.gov](mailto:essalouisiana@la.gov) or attending one these [upcoming meetings](#).
- The Department will submit its final plan to the federal government on April 3, with the hope of receiving feedback on the plan prior to the start of the 2017-2018 school year, when the law takes full effect.

Email [essalouisiana@la.gov](mailto:essalouisiana@la.gov) with questions

# Upcoming Regional Accountability Meetings

Assistant Superintendent Jessica Baghian and Accountability Commission Chairwoman Kathy Noel will be meeting with superintendents and principals to discuss the details of the state's accountability system as outlined in the [ESSA draft plan](#).

Date	Location	Superintendent Meeting	Principal Meeting
March 6	795 South Morrison Blvd Hammond, LA	8:30 a.m.-10:00 a.m.	10:30 a.m.- 12:00 p.m.
March 8	2122 North Parkerson Ave Crowley, LA	1:30 p.m.-3:00 p.m.	3:30 p.m.-5:00 p.m.
March 13	2719 Airline Dr. Bossier City, LA	8:30 a.m.-10:00 a.m.	10:30 a.m.- 12:00 p.m.
March 20	681 Hwy 594 Monroe, LA	12:00 p.m.-1:30 p.m.	2:00 p.m.-3:30 p.m.
March 21	925 West Edenborne Parkway Gonzales, LA	8:30 a.m.-10:00 a.m.	10:30 a.m.- 12:00 p.m.

# 2016-2017 Action Steps

# High Quality Teaching Action Steps

# 2015-2016 Compass Data

## **2015-2016 Compass Final Evaluation and Transitional Student Growth Data:**

- 2015-2016 Compass data, including Transitional Student Growth Data is available in the Compass Information System (CIS).
- School system leaders and principals should use this as one set of multiple pieces of data to inform workforce decisions for the 2017-2018 school year.
- Principals should also use this data as part of the end-of-year conversations with teachers about areas of strength and opportunities for development for next year.

# March Month-by-Month Checklist

## Communication and Support

- **March:** [Office hours](#) held every Tuesday
- **March 23:** [Educational Technology Monthly Call](#)

## Assessment Preparation and Administration

- **March 17:** ELDA and LAA1 test window ends
- **March 21:** Administer ACT initial test
- **March 21–April 4:** Administer ACT accommodated test (for ACT-approved and non-college reportable) and ACT Online (for pilot schools)
- **March 22–April 5:** Administer WorkKeys accommodated paper and online tests
- **March 25:** Priority Deadline for AP exam ordering
- **March:** Utilize tools in the TSM to ensure sites are ready for testing
- **March:** NAEP testing continues
- **March:** Finalize LEAP and EOC test schedules prior to setting up test sessions in eDIRECT
- **Mid to Late March:** Finalize graduation cohort data certification and exit code review for final calculation of graduation rates and SPS graduation indices
- **Late March:** Download the EOC third year cohort file/roster from sFTP site and distribute to STCs to ensure testing or accountability coding of students who must participate in Algebra I and/or English II



# April Month-by-Month Checklist

## Communication and Support

- **April 4:** [Assessment and Accountability Monthly Call and Webinar](#)
- **April 27:** [Educational Technology Monthly Call](#)
- **April:** [Office hours](#) held every Tuesday

## Assessment Preparation and Administration

- **April 3–May 5:** Administer ELA, math, and social studies tests for computer-based testing (CBT)
- **April 24–May 19:** Administer EOC Spring 2017 test

# Spring 2017 LEAP 2025 Practice Tests

Full-length practice tests are developed for LEAP 2025 English language arts, mathematics, and social studies grades 3 through 8 assessments.

The practice tests allow teachers to:

- examine practice test content to evaluate their approach to instruction and assessment
- examine practice test format to design instructional tasks and assessments that use similar features
- simulate testing conditions to help students feel prepared for operational test administration.

Content	Availability
Social Studies (grades 3-8)	<a href="#">Now</a>
English language arts (grades 3-8)	early March
Mathematics (grades 3-8)	early March

# Spring 2017 LEAP 2025 Practice Tests

	Paper-Based Tests (PBT)	Computer-Based Tests (CBT)
Grades	3, 4	3, 4, 5, 6, 7, 8
Accommodated Versions	Yes	Yes
Where to Access	<a href="#">Practice Test</a> library or eDIRECT	INSIGHT
Answer Key Access	<a href="#">Practice Test</a> library or eDIRECT	

Teachers may access the computer-based practice tests by using a Teacher Access link. The usernames and passwords are currently available in the [Practice Test Quick Start Guide](#).

# Practice Test Quick Start Guide

The [Practice Test Quick Start Guide](#) provides all of the resources needed to:

- access the practice tests and practice test guidance documents
- prepare for online administration
- score the practice tests
- access the computer-based practice tests

● ● ● PRACTICE TEST QUICK START GUIDE  
Spring 2017

LEAP  
2025

DEPARTMENT of  
EDUCATION  
Louisiana Believes

## 1. Introduction

Students in grades 3 through 8 take practice tests in English language arts, mathematics, and social studies to help prepare them for the LEAP 2025 statewide tests administered later in the school year. The practice tests allow students to:

- become familiar with the testing format
- practice using the online tools for computer-based tests
- respond to the types of questions they will answer on the LEAP 2025 tests

Paper-based practice tests (PBT) for grades 3 and 4 are available on the [Practice Test](#) webpage or in eDIRECT. Computer-based practice tests (CBT) for grades 3 through 8 are administered through the Data Recognition Corporation (DRC) INSIGHT testing platform.

## 2. Practice Test Guidance

Teachers use the English language arts, mathematics, and [social studies](#) Practice Test Guidance documents to understand how the Practice Tests can be used to support their instructional goals. These tools provide information about:

- general test structure
- recommended uses
- general cautions
- item types
- interpreting and using results
- resources

Email [assessment@la.gov](mailto:assessment@la.gov) with questions.

# High School Pathway Action Steps

# Spring 2017 AP<sup>®</sup> Exam Administration Updates

- The Department will provide an exam fee reimbursement for each 2017 Advanced Placement exam taken by a public school student who qualifies for the AP exam fee reduction.
- **To be eligible for a low-income test fee reimbursement, school test coordinators must code “option 1” on each qualifying student’s AP answer document.**
- The Department will reconcile all eligible exams as validated by the College Board and reimburse school systems in the fall of 2017 via an allocation and grant award notification.
- To request alternate/late AP testing dates at no additional costs, schools impacted by the recent flooding in southeast Louisiana should contact AP Services by March 31, 2017. Schools can contact AP Services for Educators at 877-274-6474 or by emailing [apexams@info.collegeboard.org](mailto:apexams@info.collegeboard.org). For the full late testing policy, please visit [AP Central Late-Testing Policy](#) .

Please email [collegereadiness@la.gov](mailto:collegereadiness@la.gov) with questions.

# Call Summary

# Call Summary

Month	Key Deadlines	Key Resources and Supports
<b>March</b>	<ul style="list-style-type: none"> <li>● <b>March 7:</b> Registration for 2017 Jump Start Super Summer Institute opened in Coursewhere</li> <li>● <b>March 15:</b> Deadline for Rd 2 of School Redesign Grants</li> <li>● <b>March 24:</b> Believe and Prepare RFA Notice of Intent due</li> <li>● <b>March 31:</b> Deadline to contact AP for extension of AP testing dates due to flooding</li> </ul>	<ul style="list-style-type: none"> <li>● <b>March 9:</b> Special Education Leader Monthly Webinar</li> <li>● <b>March 13, 20 &amp; 21:</b> Regional Accountability Meetings</li> <li>● <b>March 14, 15 &amp; 16:</b> March Supervisor Collaborations</li> <li>● <b>Week of March 13:</b> 2016-2017 Educator Workforce Reports released</li> <li>● <b>March 23:</b> Ed Tech Monthly call</li> <li>● <a href="#">2017 LEAP Practice Tests</a></li> <li>● <a href="#">Practice Test Quick Start Guide</a></li> </ul>
<b>April</b>	<ul style="list-style-type: none"> <li>● <b>April 3:</b> Teacher Leader Advisor applications due</li> <li>● <b>April 7:</b> Principal Support Grant due</li> <li>● <b>April 20:</b> Registration for the 2017 Teacher Leader Summit opens</li> <li>● <b>April 28:</b> Believe and Prepare RFA due</li> </ul>	<ul style="list-style-type: none"> <li>● <b>April 4:</b> DTC monthly call</li> <li>● <b>April 5:</b> Superintendent and DPC monthly calls</li> <li>● <b>April 6:</b> Data Coordinator monthly call</li> <li>● <b>April 13:</b> Special Education Leader Monthly Webinar</li> <li>● <b>April 27:</b> Ed Tech Monthly Call</li> </ul>