

Louisiana Believes

**District Planning Call
May 3, 2017**

Agenda

I. 2017-2018 School System Planning Process

- A. Early Childhood
- B. High Quality Teaching
- C. High School Pathways

II. Closing Out 2016-2017

III. Call Summary

The LDOE recommends the following supervisors attend this call:

- Curriculum and Instruction
- District Test Coordinators
- Early Childhood
- High School
- Career and Technical Education
- Principal and Teacher Leader
- Human Resources
- Special Education Directors

Early Childhood

Early Childhood: 2017-2018 Priorities

School systems will continue to help prepare all children for kindergarten by:



Providing all classrooms with accurate CLASS observations and actionable feedback (if district is Lead Agency only)



Supporting sites to implement Tier 1 curricula and improve instructional quality



Improving success for families by strengthening coordinated enrollment processes

Early Childhood: Phase III



PHASE 3:
Communicate Plans

During Phase 3 of the 2016-2017 academic planning process, early childhood programs and lead agencies should focus on communication with stakeholders that:

1. *Squarely frames the improvement targets for 2017-2018;*
1. *Clearly deliniates current gaps; and*
1. *Affirms expectations for stakeholder responsibility in the plan for achieving success.*

Phase III Planning: Early Childhood Programs

Put in place a schedule of site leader meetings for 2017-2018 to:

1. *Reinforce the connection between the Practice Performance Profile indicators and preparing every child for kindergarten;*
2. *Ensure that site leaders are aware of the improvement targets and know their role and responsibility with the improvement strategies;*
3. *Check progress toward improvement targets; and*
4. *Evaluate and revise strategies.*

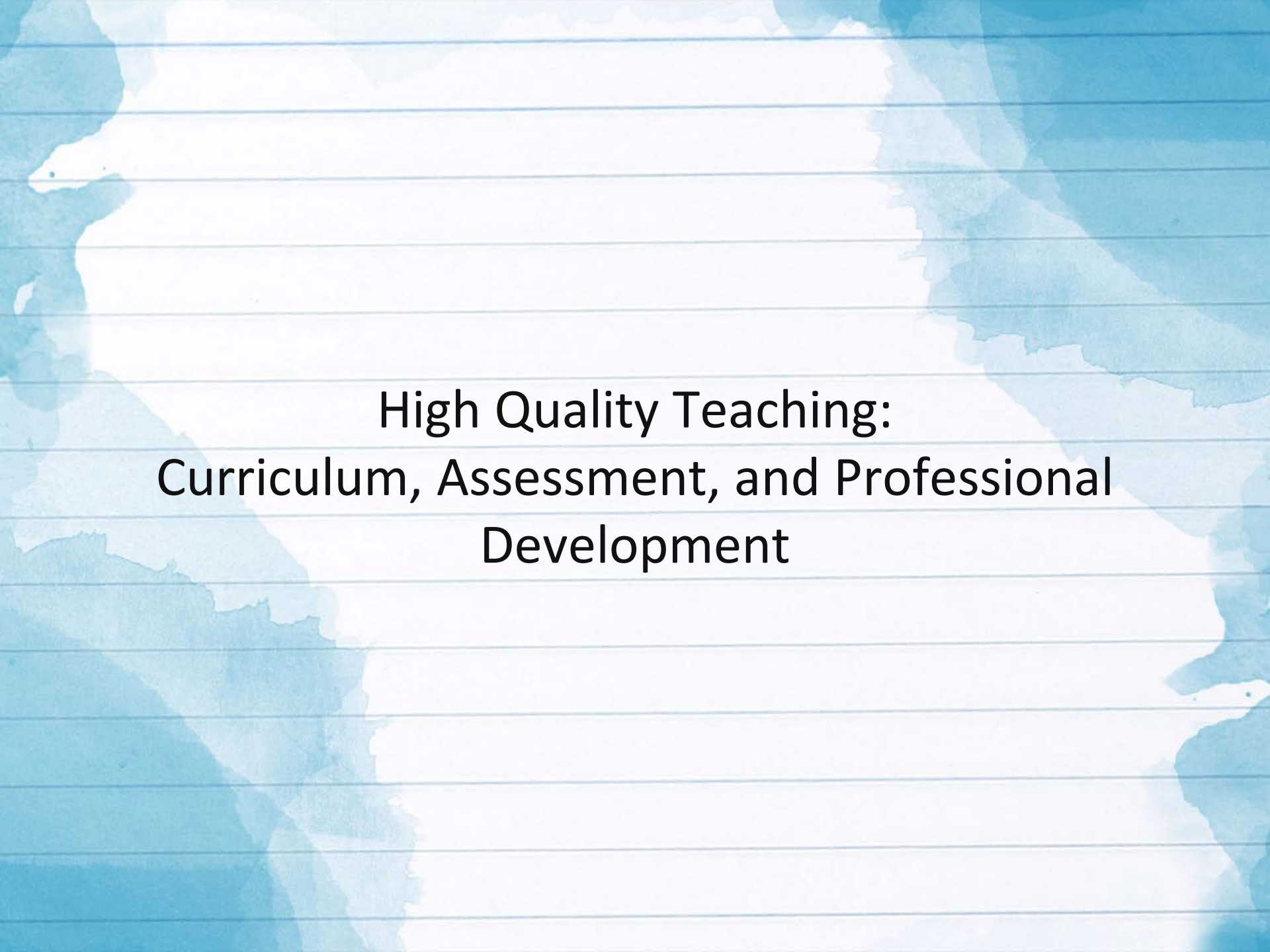
Spending time with site leaders builds community, promotes shared responsibility, and gives successful ideas the opportunity to grow.

Phase III Planning: Lead Agencies

Lead Agency Assurances provide the foundation for communication around your 2017-2018 plan for improvement.

- *Conduct meetings for all community network program partners once each month.*
- *Engage community partners who want to support early care and education in the community.*
- *Use the community's coordinated enrollment information campaign to engage and inform parents about community-wide improvement efforts.*

Maintain ongoing dialogue with program partners that is focused on improvement targets and strategies.



High Quality Teaching:
Curriculum, Assessment, and Professional
Development

Curriculum, Assessment, and PD: 2017-2018 Priorities

School systems will build on and deepen the academic work they have already done to improve instruction in every classroom. Specifically, school systems should:



Choose high-quality curricula in all subject areas and grade levels, including math, English language arts, early childhood, and social studies



Streamline the use of high-quality assessments to reduce overall testing and improve the quality of tools used



Provide regular, ongoing professional development for educators that is rooted in a curriculum and informed by student work

Phase III: Curriculum, Assessment, and PD



During Phase 3 of the 2016-2017 academic planning process, school systems should:

- ensure teachers and principals know what curricula and assessments they will use in 2017-2018 and provide access to the materials through end-of-year conversations;
- share professional learning calendar and objectives for the year with teachers; and
- share 2017-2018 academic vision with parents and community members through end-of-year or back-to-school events.

Phase III Planning Resources: End-of-Year Conversations

End-of-year conversations between principals and teachers should center on the following topics:

- What is the attainment level for your student learning targets?
- What changes in practice took place this year based on feedback from observations?
- What opportunities and resources are available as we prepare for next year?

Principals should also ensure that teachers know which curricula and assessments will be used next school year.

Please see the [Louisiana Principals' Teaching and Learning Guidebook](#) for more information about end-of-year processes or email compass@la.gov with questions.

Phase III Planning Resources: 2017 Teacher Leader Summit Schedule

The 2017 Louisiana Teacher Leader Summit will take place **June 6–9 at the Convention Center in New Orleans**. This event will bring together 5,000 educators and content experts from across the state to share their knowledge, learn new skills, and prepare for the upcoming 2017-2018 school year.

Tuesday, June 6, 12:00–5:00

- School system/LEA supervisors
- School counselors
- Early childhood educators
- Principals

Wednesday, June 7, 8:30–5:00*

- School system/LEA supervisors
- School counselors
- Early childhood educators
- Principals
- Content-specific, pre-registered sessions for Teacher Leaders

Thursday, June 8, 8:30–5:00*

- Plenary
- Principals
- Content-specific, pre-registered sessions for Teacher Leaders
- Content-specific, first-come, first served sessions for Teacher Leaders

Friday, June 9, 8:30-11:45

- Content-specific, first-come, first-served sessions for Teacher Leaders

** Lunch provided*

Phase III Planning Resources: 2017 Teacher Leader Summit Sessions

The Summit will offer educators the choice of over 200 [sessions](#) led by LDOE staff members, partner organizations, and fellow educators from across Louisiana.

Please note that all sessions and schedules are subject to change. Participants should refer to the 2017 Summit app, which will be available in early May, for the most up-to-date list of sessions and schedule.

First come, first served

- The majority of sessions at the Summit
- Participants do not register in advance; seats are filled on a first come, first served basis
- These sessions do *not* appear in WisdomWhere but participants can find them on the session list and in the app

Pre- Registered

- Require pre-registration in WisdomWhere
- Often one-day or two-day, partner-led sessions
- Participants who do not pre-register for these sessions will only be allowed to attend if space allows

Phase III Planning Resources: 2017 Teacher Leader Summit Attendees

Based on the types of sessions available, the LDOE recommends that the following educators attend the Summit:

Classroom Teachers

Role	Recommended Number	Recommended Day(s)
ELA	~1 per school	Wed*, Th, Fri
Math	~1 per 2 schools	Wed*, Th, Fri
Science	~1 per 2 schools	Wed*, Th, Fri
Social studies	~1 per 3 schools	Wed*, Th, Fri
Special education	~1 per 3 schools	Wed*, Th, Fri
Early childhood	~1 per 3 schools	Tu, Wed*
World language	~1 per 5 schools	Wed*, Th
English language learner	~1 per 2 schools with a sizable ELL population	Wed*, Th

* Note: half of the sessions on Wednesday are for supervisors and half are for teachers.

Phase III Planning Resources: 2017 Teacher Leader Summit Attendees

School and School System Supervisors

Role	Recommended Number	Recommended Day(s)
Principals and school leaders, assistant principals, academic deans, instructional coaches, high school counselors	~1 per 3 schools	Tu, Wed*, Th
Superintendents	~1 per 3 schools	Tu, Wed*
Supervisors of curriculum, instruction, and professional development		Tu, Wed*, Th
Supervisors of assessment and accountability		Tu, Wed*
Supervisors of special populations (ELL, special education)		Tu, Wed*, Th
Supervisors of early childhood and lead agencies		Tu, Wed*
Supervisors of high school programming and pathways		Tu, Wed*, Th
Supervisors of human resources and talent management		Tu, Wed*
Data coordinators		Tu

* Note: half of the sessions on Wednesday are for supervisors and half are for teachers.

Phase III Planning Resources: 2017 Teacher Leader Summit Registration

Registration is now open, and it will close May 15.

Educators must register in WisdomWhere for *each day* they plan to attend the Summit.

Registration requires educators to enter a code unique to their district. Please contact your Teacher Leader coordinator for this code.

- [Register for Tuesday, June 6](#)
- [Register for Wednesday, June 7](#)
- [Register for Thursday, June 8](#)
- [Register for Friday, June 9](#)

Contact your Network coach or LouisianaTeacherLeaders@la.gov for help with registration.

Want to show your Teacher Leader pride at the Summit? Teacher Leader t-shirts are now [available for purchase](#). Choose from five different designs. **Order by May 15 to receive your t-shirt before the Summit.**

Phase III Planning Resources: Communicating 2017 Assessment Results

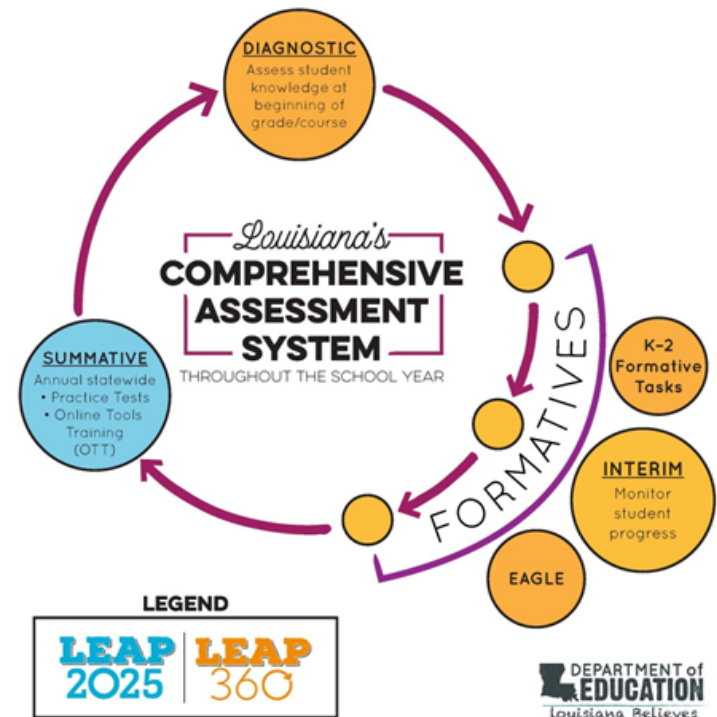
Below is the timeline for the release of 2016-2017 school- and school system-level assessment results. School systems should develop a plan for communicating these results to principals, teachers, and families.

Assessment	Reporting Timeline	Location
ELDA/LAA 1	May	eDirect
LEAP ELA/Math/Science	Late June	eDirect
LEAP Online Cleanup	Late June	eDirect
End-of-Course Final Reports	June	eDirect
ACT	July	FTP
Advanced Placement	Early August	FTP
LEAP Social Studies	Early Fall	eDirect

Please email assessment@la.gov with questions.

Phase III Planning Resources: LEAP 360 Update

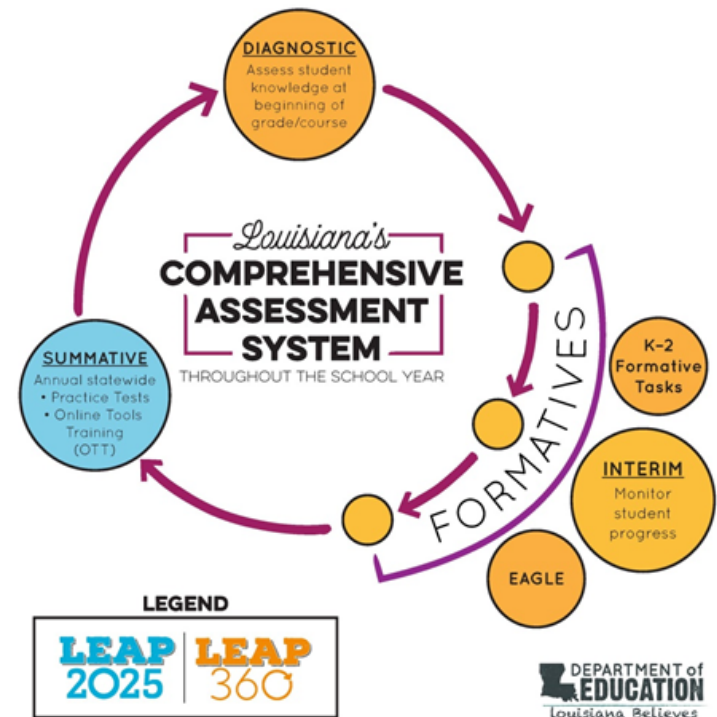
- LEAP 360 resources include:
 - EAGLE (math, ELA, social studies, science)
 - K-2 formative tasks (math and ELA)
 - Diagnostics (3–8 and EOC math and ELA)
 - Interims (3–8 and EOC math and ELA)
- The [LEAP 360 Interim Preview](#) is live and allows you to:
 - View multiple grade levels, sessions, and content areas
 - View the alignment of LEAP 360 to the Louisiana State Standards and LEAP 2025 summative assessments
 - Access the LEAP 360 Interim Preview [deck](#) for more details



Please email assesment@la.gov with questions.

Phase III Planning Resources: LEAP 360 Update

- A Memorandum of Understanding (MOU) will be released mid-May allowing LEAs to opt-in for access to all LEAP 360 resources for the 2017-2018 school year.
- The MOU will be available for download in the [Assessment Library](#) mid-May. Newsletter notifications will be released once the MOU is posted.
- A timeline and specific deadlines will be included in the MOU.
- All signed MOUs will be returned following the Teacher Leader Summit.



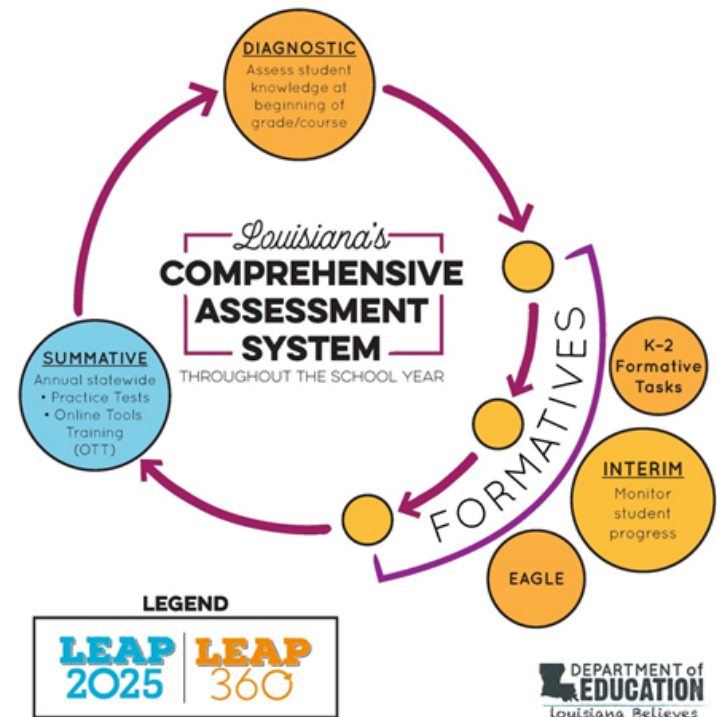
Please email assessment@la.gov with questions.


Phase III Planning Resources: LEAP 360 Summit Sessions

LEAP 360 Summit Sessions will prepare educators to use the non-summative assessments successfully in the classroom. Specific sessions include:

- **Tuesday:** A Year in LEAP 360: An Overview of Louisiana's Comprehensive Assessment System
- **Wednesday:**
 - LEAP 360: Spotlight ELA
 - LEAP 360: Spotlight Mathematics
- **Thursday and Friday:**
 - LEAP 360: Digging Deeper in ELA (3–5)
 - LEAP 360: Digging Deeper in Math (3–5)
 - LEAP 360: Digging Deeper in ELA (6–8)
 - LEAP 360: Digging Deeper in Math (6–8)
 - LEAP 360: Digging Deeper in ELA (EOC)
 - LEAP 360: Digging Deeper in Math (EOC)

Please email assessment@la.gov with questions.





High-Quality Teaching: New Phase II Planning Resources

Resources for Phase II Planning: Instructional Material Reviews

The Department conducts ongoing reviews of curricular materials to support school systems in adopting Tier 1 curricula in all core subjects.

New reviews of K–12 science curricula will be released this fall. Find the latest Tier 1 curricula below and on the [Annotated Reviews webpage](#).

Publisher	Title	Core Subject	Tiered Rating
Houghton Mifflin Harcourt	Big Day for Pre K (Resubmission)	Early Childhood	1
Agile Mind	Agile Mind Mathematics, Gr 6-8	Math	1

District Action Steps: Please share this information with textbook adoption supervisors, curriculum directors, and educational technology staff and encourage publishers to submit their materials or contact LouisianaCurriculumReview@la.gov for more information.

Reminder: Staff, parents, and partners can participate in the review process through the Department’s Instructional Materials Review [webpage](#).

Louisiana Student Standards for Science: Implementation

To support educators with the transition to new standards, the Department will provide substantial support with curriculum, local assessments, and professional development.

Area	Support and Timeline
Curriculum and Resources	<p data-bbox="465 594 1064 629">Instructional Materials Review</p> <ul data-bbox="465 651 1789 801" style="list-style-type: none"><li data-bbox="465 651 1309 686">• Rubric released and call for submissions<li data-bbox="465 708 1789 743">• Hiring and training of Teacher Leader Advisors—<i>May/June 2017</i><li data-bbox="465 765 1402 801">• First curriculum reviews released—<i>Fall 2017</i> <p data-bbox="465 879 880 915">New Standards Tools</p> <ul data-bbox="465 936 1634 1200" style="list-style-type: none"><li data-bbox="465 936 1489 972">• Connections to ELA and math standards—<i>posted</i><li data-bbox="465 993 1547 1029">• Key shifts and instructional implications—<i>next week</i><li data-bbox="465 1051 1363 1086">• Progressions of learning—<i>May 2017 (new)</i><li data-bbox="465 1108 1499 1143">• Middle school sample transition plan—<i>June 2017</i><li data-bbox="465 1165 1634 1200">• Sample scope and sequence documents—<i>Summer 2017</i>

Louisiana Student Standards for Science: PD Support

Area	Support and Timeline
Professional Development	<p data-bbox="388 434 736 472">Self-Paced Learning</p> <ul data-bbox="388 496 1557 535" style="list-style-type: none"><li data-bbox="388 496 1557 535">• Live and recorded webinars on new standards—<i>June–July 2017</i> <p data-bbox="388 605 645 644">Collaborations</p> <ul data-bbox="388 654 1097 743" style="list-style-type: none"><li data-bbox="388 654 1097 692">• Sessions at March 2017 collaboration<li data-bbox="388 704 1097 743">• Sessions at 2017-2018 collaborations <p data-bbox="388 808 809 846">Teacher Leader Summit</p> <ul data-bbox="388 856 1866 946" style="list-style-type: none"><li data-bbox="388 856 1866 946">• Multiple one- and two-day institutes at the TL Summit (Louisiana Tech University, LSU Gordon A. Cain Center, Louisiana Science Teachers Association) <p data-bbox="388 1011 639 1049">Local Partners</p> <ul data-bbox="388 1059 1827 1303" style="list-style-type: none"><li data-bbox="388 1059 1827 1149">• The Department is working with local universities to build trainings for the new standards<li data-bbox="388 1160 1827 1250">• Louisiana Tech is offering four-day summer trainings in both north and south Louisiana. Dates, costs, and registration are detailed in the linked flyers.<li data-bbox="388 1262 1827 1303">• LSU Cain Center is offering two-day summer trainings in Baton Rouge.

LA Connectors for English Learners and Students with Significant Disabilities

In order for the Louisiana Connectors to be used successfully during the 2017-2018 school year, educators and the Department will work together to implement the following academic support plan.

- **Curriculum and resources**—New standards, curricular and instructional resources, and parent communication tools (May 2017)
- **Assessments**—Preview of assessment design and structure (summer 2017), new assessment administration (spring 2018)
- **Teacher training and professional development**—Trainings on new standards (summer 2017 and ongoing) and recommendations to districts for continuing support (ongoing)

LA Connectors for English Learners and Students with Significant Disabilities

Teacher Leader Summit Trainings:

A series of initial cohort trainings will be offered on the LA Connectors for [English Learners](#) and Students with Significant Disabilities to support school systems in the implementation phase.

- LEAs should identify participants that will be able to train and support educators throughout the year in implementing the Connectors
- Initial training will equip participants with a working knowledge of the Connectors and will provide materials to support educators in awareness and application
- Cohorts participants will continue engagement in further trainings and support throughout the 17-18 school year
- LEAs will receive invitation to preregister participants based on current enrollment of targeted population.

Email louisianastandards@la.gov with questions.

Compass System 2017-2018

In preparation for the upcoming school year, the Department will host trainings to help school systems and educators use new Compass resources. These resources will help school systems and educators continue to deepen Compass as a system for ongoing educator support.

Teacher Leader Summit:

- [Sessions](#) will be offered for school system supervisors, principals, and ELA and math teachers.

Compass System Webinars:

- June 12, 19, and 26 at 1:00 p.m.
- School systems supervisors, principals, and Compass contacts are encouraged to attend.
- To join, go to <https://louisianaschools.adobeconnect.com/cis/> or click [here](#)
- Toll-free access number: 1-855-240-2575
- Participant PIN code: 89147656

Contact compass@la.gov for more information or with questions.

Principal Support Grant Awards

The [Principal Support Grant](#) is designed to support principals in their work as instructional leaders. We are excited about the growing interest in participating in this application process and will notify recipients of their award by the end of May.

At that time, grant contacts will receive an email with additional information and next steps, including the following:

- **Grant Administration Webinar:** information and materials for current and new districts
- **Principal Fellowship:** registration information and training dates
- **TAP:** training schedule
- **NIET Best Practices:** scheduling customized district trainings

For more information or to ask questions, please contact compass@la.gov.

School Redesign Process Updates


As part of the state's ESSA plan, 225 schools have been identified as needing comprehensive support. In order to support the creation of district plans to support these schools, the Department offered the School Redesign Planning Grant.

- Between rounds 1 and 2, 60 school system applications were received, spanning 44 unique partner organizations, with a \$1.3M total allocation to school systems.
- Round 2 awardees should log in to [eGMS](#) and load budget information by **Friday, May 5th, 2017**. All planning grant funds must be used no later than September 30, 2017.

Later this year, the Department will release the School Redesign Application to competitively award ESSA school improvement funding. Our current draft timeline of key dates is as follows:

- Fall 2017: The Department releases School Redesign Grant application
- Fall 2017: Application submission and review
- Winter 2017/2018: Grant awards approved by BESE

For additional information please contact your Network Leader or hunter.brown@la.gov.



High-Quality Teaching:
Leadership Development and Talent Management
Resources

Leadership Development and Talent Management: 2017-2018 Priorities

A skilled teaching force is necessary to achieve academic success with students. To this end, school systems and schools will create a “talent pipeline” at every level of the system. Specifically, school systems should:



Establish and/or expand teacher preparation partnerships that:

- Meet identified workforce needs, as portrayed in annually-released educator workforce reports;
- Include yearlong teaching residencies in which aspiring teachers train alongside expert mentor teachers;
- Identify and develop mentor teachers who are prepared to support aspiring and new teachers.



Identify excellent educators and create professional growth experiences to:

- Grow and leverage teacher leaders effectively in all content areas; and
- Provide challenging experiences to help principals improve their ability to coach and support educators.

Leadership Development and Talent Management: Phase III



PHASE 3: Communicate Plans

During Phase 3 of the 2016-2017 academic planning process, school systems should:

- Build awareness of Believe and Prepare partnership opportunities with principals and prospective mentors.
- Proactively communicate about the mentor role so excellent teachers are aware of the opportunity.
- Communicate changes to school system compensation plans.

Phase III Planning Resources: Leadership Development and Talent Management

Build awareness of Believe and Prepare partnership opportunities with principals and prospective mentors.	Ensure that principals and current or prospective mentors are aware of Believe and Prepare partnerships, including the expected number and placement of yearlong residents in 2017-2018.
Proactively communicate about the mentor role so excellent teachers are aware of the opportunity.	Use teacher results to identify mentor teachers to serve in the 2017-2018 school year.
Communicate changes to school system compensation plans.	Communicate with educators about any changes to the 2017-2018 compensation schedule.

Phase III Planning Resources: 2016-2017 Educator Workforce Report

The Educator Workforce Report, an internal report, provides school system leaders with a field of data to help inform educator workforce decisions.

Data in the Educator Workforce Report may be used to inform decisions related to:

- **Recruiting and hiring**
- **Evaluating results**
- **Compensating teachers and school leaders**
- **Retaining teachers and granting tenure**

Based on feedback from some school systems, the out-of-field appendix and the corresponding tables in the Educator Workforce Report were refreshed and are now available in each district's FTP.

Email sara.strickland@la.gov with questions.

Phase III Planning Resources: Mentor Teacher Identification and Support

Mentor teachers are teachers who co-teach with undergraduate yearlong residents and/or support new teachers. Mentor teachers have achieved excellent results with students and have demonstrated the ability to work well with their peers.

Starting this summer, **school systems will receive guidance on mentor teacher recruitment and identification**, including ways to use the educator workforce report to identify strong mentors.

Starting in fall of 2017, **school systems will have the opportunity to send mentors to statewide training sessions**.

Training will be designed to develop knowledge and skills needed to provide effective coaching and feedback to residents and new teachers.

June 2017	School systems receive guidance and support on mentor recruitment and selection
Fall 2017	Mentor training launches; while not required, school systems will receive an allotment of seats and are encouraged to send mentors
Winter and Spring 2018	Mentor training continues
Summer 2018	Mentor training concludes

Update Regarding TAT Renewals

Background:

The Temporary Authority to Teach (TAT) certificate is a one-year, non-renewable, non-standard teaching certificate that authorizes an individual to teach while pursuing the Praxis exam scores required for entrance into a post-baccalaureate teacher preparation program.

TAT Extension Waiver Approved:

Based upon feedback from school system leaders, and upon recommendation from the Department, BESE approved a waiver of policy relative to TAT extensions at its April meeting.

New Temporary Authority to Teach Waiver

The new waiver allows the Teacher Certification Appeals Council (TCAC) to consider appeals relative to TAT extensions through July 2018, provided there is evidence that the teacher is:

- teaching in a demonstrated shortage area, as evidenced by LEA-level workforce needs;
- registered for and has taken the examinations required for admission into a post-baccalaureate teacher certification program at least twice during the initial one-year validity period of the authorization;
- meeting the standards of effectiveness pursuant to Bulletin 130 and mandated by R.S. 17:3885 in all years in which the TAT was held; and
- recommended by the school system and will continue to be employed by the LEA.

TCAC will begin hearing appeals relative to TAT extensions this summer. The TCAC meeting calendar will be updated and disseminated in mid-May.

Email sara.strickland@la.gov with questions.

2018 Teacher and Principal of the Year Semifinalists

The Department is proud to announce the [2018 Teacher and Principal of the Year Semifinalists](#). These educators are making exceptional gains with students and their commitment to student success exemplifies Louisiana's teaching profession.

The finalists will be announced in May. All Teacher and Principal of the Year finalists and semifinalists will be honored at the [11th Annual Cecil. J. Picard Educator Excellence Awards Gala](#) at the Crowne Plaza Executive Center in Baton Rouge, Louisiana on Friday, July 28, 2017.

Please email excellenteducators@la.gov with any questions regarding the Teacher and Principal of the Year programs.

Congratulations to the School Systems

Teacher of the Year Semi-finalists		Principal of the Year Semi-finalists	
Advocates for Academic Excellence in Education, Inc.	Jackson Parish - new app	Ascension Parish	Ouachita Parish
Allen Parish	Jefferson Davis Parish	Assumption Parish	Rapides Parish
Assumption Parish	Lafayette Parish	Calcasieu Parish	Richland Parish
Belle Chasse Academy	Lafourche Parish	Cameron Parish	St. James Parish
Bossier Parish	Natchitoches Parish	City of Baker School District	St. Martin Parish
Cameron Parish	Orleans Parish	East Baton Rouge Parish	St. Mary Parish
Central Community School District	Rapides Parish	Evangeline Parish	Terrebonne Parish
Collegiate Academies	St. Helena Parish	Iberville Parish	Union Parish
East Baton Rouge Parish	St. John the Baptist Parish	Jackson Parish	Vermilion Parish
Edward Hynes Charter School	Tangipahoa Parish	Jefferson Parish	Vernon Parish
FirstLine Schools, Inc.	Webster Parish	Lafayette Parish	West Baton Rouge Parish
Iberia Parish	West Baton Rouge Parish	Livingston Parish	Zachary Community School District

High School Pathways

High School Pathways: 2017-2018 Priorities

School systems will continue to support student graduation pathways and postsecondary planning through individual graduation planning. Specifically, school systems should:



Identify and offer students TOPS University Pathways that ensure students going to four-year colleges have taken a true college preparatory curriculum in high school and have every chance possible to receive TOPS



Identify and offer students Jump Start TOPS Tech Pathways with career courses and workplace experiences leading to the attainment of an industry credential and eligibility for TOPS Tech



Assist all students with financial aid planning to remove the financial barriers to accessing postsecondary education and training

High School Pathways: Phase III



During Phase 3 of the 2016-2017 academic planning process, school systems should:

- Ensure that schools and counselors have information on programming for identified university and career pathways.
- Promote pathway offerings and financial aid resources to students and parents through end-of-year or back-to-school events, the new automated text response system, or Jump Start video network.

Phase III Planning Resources: Individual Graduation Planning

Counselors will support the 2019 cohort in designating a diploma pathway (TOPS University Diploma or TOPS Tech Career Diploma) by the end of the 2016-2017 academic year.

Therefore, the Department developed [Individual Graduation Plan Guidance](#) and [Student with Disabilities Guidance](#) to support professional school counselors' efforts to assist all students with:

- Developing postsecondary education goals and/or workforce plans
- Selecting 2017-2018 academic year coursework aligned with personal interests
- Completing [financial aid information](#) for **2018** cohort

Additionally, data managers should verify the following data is entered into local software for uploading into Student Transcript System (STS) / eScholar

- Student diploma pathway designation
- Career option codes
- Certificates for industry-based credentials

Please email JumpStart@la.gov with questions.

Phase III Planning Resources: Financial Aid Planning

As of April 14, 2017, 51 percent of Louisiana public school seniors applications have completed the FAFSA. Senior completion rate for the same week in 2016 was 38 percent. Specific student-level data can be obtained by having a district agreement with LOSFA. Contact robyn.lively@la.gov.

FAFSA Completion Campaign:

- In order to support parents and students in completing the FAFSA, the Department is conducting a social media campaign, ***45 Minutes = Infinite Possibilities***, that will run through May 12 in partnership with the LOSFA, Career Compass, and the Louisiana Education Loan Authority.
- Parents and students are provided with financial aid and student resources via the Department's Financial Aid Facebook page and Twitter (#45 minutes) and have targeted FAFSA completion dates at several schools.
- All resources released during the campaign will also be available on the [financial aid homepage](#).

Additional Support:

- Lesson plans are available on the [financial aid homepage](#) .
- The Department will host sessions at the Teacher Leader Summit.

Email ldefinancialaid@la.gov with questions.

Early Childhood Education Jump Start Pathway

At its April meeting, BESE approved a new Jump Start pathway for Early Childhood Education. Beginning in 2017-2018, students who successfully complete the Early Childhood Education Jump Start pathway will graduate with training that prepares them to earn the Early Childhood Ancillary Certificate.

Features of the Early Childhood Education pathway:

- Prepares students to complete training for a Child Development Associate (CDA), a national credential for early learning professionals. The CDA can be used to earn the Early Childhood Ancillary Certificate.
- Provides students extensive opportunities for applied practice and mentorship in the early learning classroom setting.
- Opportunities for Interested school systems and high schools to work with the Department to design BESE-approved coursework for the Early Childhood Education Pathway.

For more information please contact jumpstart@la.gov or view the [All things JumpStart](#) portal.

Closing Out 2016-2017

Early Childhood

Early Childhood End-of-Year Milestones

Two important early childhood end-of-year milestones are approaching.

- LEAs that are Lead Agencies must have spring **CLASS® observations** for every publicly-funded classroom in their community **completed** and entered into the online system **by May 15**.

Planning to complete these observations several days ahead of schedule will provide Lead Agencies with flexibility to deal with unexpected circumstances that may arise.

- Early childhood teachers must assign and **finalize levels in the GOLD® online system** for the children in their class **by May 31**. All information about the teacher and the classroom should be reviewed for accuracy.

Set a date ahead of the last day of school for teachers to have entered all required information.

Measuring Results

May Month-by-Month Assessment Checklist

Communication and Support

- **May:** [Office hours](#) held every Tuesday

Assessment Preparation and Administration

- **May:** ELDA & LAA 1 School Rosters, Student Reports, and CSV files available in eDIRECT
- **May 1–5:** Administer LEAP paper-based tests
- **May 2–13:** Administer Advanced Placement (AP) test
- **May 3:** Administer ACT makeup test
- **May 12:** Last day for College Level Examination Program (CLEP) test scores to be included in SPS for graduation cohort members
- **May 12:** Testing window closes for ACT WorkKeys
- **April 24–May 19:** Administer EOC Spring 2017 tests

Online Testing Updates

Online Testing:

- The LEAP 2025 online test administration for grades 4–8 will continue through this Friday, May 5. To date, 80 percent of test sessions have been completed.
- The EOC test administration will continue through May 19. To date, 25 percent of test sessions have been completed.

Paper-Based Testing:

- The paper-based window for LEAP grades 3 and 4 ends this Friday, May 5.
- Grades 3–8 will take the paper-based science assessment this Friday, May 5.

Technical Support:

- If a school encounters any technical issues, please make sure that they are following the [technical assistance protocol](#).
- Email assessment@la.gov with questions.

High School Pathways

2017 Jump Start Super Summer Institute

2017 Jump Start Super Summer Institute (SSI) will be held July 17–21 at multiple locations in Lafayette, La. SSI provides teacher certification training for [Jump Start Statewide Industry-Based Certifications](#).

The Department will pay training costs and provide lunch for secondary instructors attending SSI. School systems are responsible for all travel expenses and a nominal registration fee (\$249/instructor). Career Development Funds (CDF) or 2016-2017 Carl Perkins Funds can be used to cover registration fees.

School systems will be invoiced for total registration fees and should **submit payment to the Department no later than June 15, 2017**, to the following address:

Louisiana Department of Education
Appropriation Control
ATTN: Dakora Foreman
P. O. Box 94064
Baton Rouge, LA 70804-9064

Please email JumpStart@la.gov with questions.

AP[®] Computer Science Principles Training Opportunity

The Department is **offering a new [AP[®] Computer Science Principles](#) session at SSI** this year. This session will explore the computational thinking practices and the components of the curriculum framework, including the big ideas, enduring understandings, learning objectives, and essential knowledge statements.

The deadline to register for this session has been extended to May 12, 2017.

Please see the [SSI Overview](#) document or contact jumpstart@la.gov for more information about the Jump Start Super Summer Institute.

Please email collegereadiness@la.gov with questions.

2016-2017 Career and Technical Education (CATE) Data Submission

The CATE data system will open from **May 15, 2017, to June 30, 2017**, for school systems to submit 2016–2017 Career and Technical Education school-level and student-level data, as required by USDOE Office of Career and Technical Adult Education.

The Department will provide a series of webinars to give guidance to school system and school users regarding required data submission. The webinars are scheduled for the following dates (*no pre-registration required*).

- **Tuesday, May 9, 2017** **10:00–11:00 a.m.**
- **Tuesday, May 9, 2017** **2:00–3:00 p.m.**

Webinar URL: <https://louisianaschools.adobeconnect.com/catefor2017/>

Please email JumpStart@la.gov with questions.

Policy Update

BESE Regulation Waiver Request Form

The Department is instituting a new process to streamline the receipt and review of BESE regulation waiver requests.

- Beginning next month, all waiver requests should be submitted via the [BESE Regulation Waiver Request Form](#).
- BESE regulation waiver request forms should be submitted to the Department by no later than May 15 of the preceding the academic year for which the waiver is being requested.
- BESE will review all waiver requests for the upcoming academic year at its June meeting each year.

Please contact Ryan Gremillion at 225.342.1501 or Ryan.N.Gremillion@la.gov for additional information.

Call Summary

Call Summary

Month	Key Deadlines	Key Resources and Supports
<p>May</p>	<ul style="list-style-type: none"> • April 24-May 19: administer EOC Spring tests • May 2-12: Administer AP tests • May 8-19: CVR roster verification period (open correction) • May 12: Deadline to register for AP Computer Science Principles training at SSI • May 12: testing window for ACT Workkeys closes • May 15: deadline to submit BESE waiver requests for 17-18 school year • May 15: Registration for TL Summit closes • May 15: complete spring CLASS observations • May 15: CATE system opens for CTE data collection • May 31: ECE teachers assign levels for students in GOLD online system 	<ul style="list-style-type: none"> • May 4: Data Manager Call • May 9: CATE data submission webinar • May 11: Special Education Leader call • LEAP 360 Interim Preview • Science connections to ELA and math standards • Individual Graduation Plan Guidance • Student with Disabilities Guidance • Coming Soon: key shifts, instructional implications and progression of learning for new science standards
<p>June</p>	<ul style="list-style-type: none"> • June 15: Submit payment for SSI registration fees • June 30: CATE system closes for CTE data collection • June: EOC results • Late June: LEAP ELA/Math/Science results; LEAP online cleanup 	<ul style="list-style-type: none"> • June 12, 19, 26: Compass System webinar at 1pm • Middle school sample transition plan for new science standards