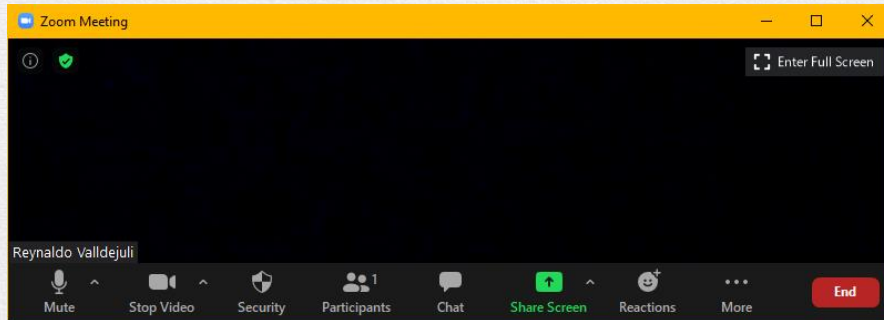


Zoom Meeting Preparation

- Please make sure your phone or computer is muted to minimize background noise.
 - To do this, hover over the bottom left-hand side of your screen and click “Mute.”
- Please make sure you have turned off your camera to save bandwidth and prevent any connectivity issues.
 - To do this, hover over the bottom left-hand side of your screen and click “Stop Video.”
- Please submit questions during the presentation in the “Chat” function located on the bottom of your screen.



If you require an interpreter or have other accessibility needs for future LDOE meetings, please contact LDOEcommunications@la.gov.

LOUISIANA DEPARTMENT OF EDUCATION



Nonpublic Schools Monthly Call

November 16, 2022

Email contact: studentscholarships@la.gov

Louisiana's Goals and Priorities

SIX CRITICAL GOALS

Students enter kindergarten ready.

Students will achieve mastery on third-grade assessments and enter fourth grade prepared for grade-level content.

Students will achieve mastery on eighth-grade assessments and enter ninth grade prepared for grade-level content.

Students will graduate on time.

Students will graduate with a college and/or career credential.

Students will graduate eligible for a TOPS award.

EDUCATIONAL PRIORITIES

Ensure every student is on track to a professional career, college degree, or service.

Remove barriers and create equitable, inclusive learning experiences for all children.

Provide the highest quality teaching and learning environment.

Develop and retain a diverse, highly effective educator workforce.

Cultivate high-impact systems, structures, and partnerships

Agenda



- **Louisiana Scholarship Program**
 - **Notice of Intent Confirmation**
- **LSP Application Updates**
- **Quarterly Reporting**
- **Application Timeline and Important Dates**
- **School Support**
- **Communications**



Louisiana Scholarship Program

NOI Confirmation

- All new and currently participating Scholarship schools were required to submit a Notice of Intent to Participate to LDOE in October.
- To ensure the correct number of available seats in the correct grades are included in the application match process, LDOE will provide you with the opportunity to review and make any changes to your original NOI data.
- **You will receive an email on December 1st from the scholarship team to confirm the number of available new seats.**

Please note: Current/Returning students and transfer students should not be included in the numbers listed.

NOI Confirmation

- It is important that you carefully review the information in the NOI confirmation email.
- **This will be your final opportunity to adjust your requests before the match process begins for the 2023-24.**
- Schools that do not submit a confirmation will be matched based on the data submitted in the original NOI and this data will be considered final.
- If the numbers in your email are correct, then no action will be needed.
- However, if you would like to update/change your numbers, you will need to complete a NOI confirmation form which will be linked in the email from our office.

2022-2023 Louisiana Scholarship Program - Notice of Intent CONFIRMATION

If you encounter any issues while completing this form, please email
studentscholarships@la.gov

Please review the new-student request previously submitted for your school and make any necessary changes necessary by DECEMBER 15th, 2021. This is your FINAL opportunity to make changes.

School Name *

Site Code *

Number of requested NEW Scholarship students by grade (0 means NONE) *

	Number of Students
Kindergarten	<input type="text"/>
1st	<input type="text"/>
2nd	<input type="text"/>
3rd	<input type="text"/>
4th	<input type="text"/>
5th	<input type="text"/>
6th	<input type="text"/>
7th	<input type="text"/>
8th	<input type="text"/>
9th	<input type="text"/>
10th	<input type="text"/>
11th	<input type="text"/>
12th	<input type="text"/>

Confirm the email address(es) for the main point(s)-of-contact for all scholarship-related communications. *

example@example.com

Confirmation Form (Changes Only)

DISCLAIMER: This is a screenshot of the NOI confirmation form from last year.

- To ensure you are completing the right form, always look at the heading at the top of the form.
- This year's form will be titled "2023-24 Louisiana Scholarship Program -Notice of Intent Confirmation"
- **You will only need to complete this form if you would like to make changes to the NOI that was submitted in October.**
- **The NOI Confirmation will be due on December 7th.**

LSP Application Updates



Application Update

- NOLA public schools (ONEAPP) is discharging all Louisiana scholarship students from their system in Salesforce.
- NOLA public schools (ONEAPP) will no longer manage Louisiana scholarship schools/students effective for the 2023-24 application cycle.
- This change has no impact on students currently receiving the Louisiana Scholarship awards for the 2022-23 school year.

Application Update

All Louisiana Scholarships students and schools in Orleans will be solely managed by the Louisiana Department of Education.

This means for the 2023-24 school year, **families (including Orleans)** who need to submit applications for the scholarship must apply using the LDOE website.

- Parents will be able to access the application on December 12th on our [website](#).
- The application will open on December 12, 2022 and close on January 27, 2023.

Who Needs to Submit an Application

Continuing students for the 2022-23 school year will be rolled over for the 2023-24 school year. This means that MOST students will not need to submit an application.

- **Students who wish to transfer to another participating scholarship school and those in a terminal grade will need to submit an application for the 2023-24 school year.**
- Schools will need to collect all verification and documentation from parents for the application cycle.
 - Please keep this information on file at your school.
 - It is your responsibility to review documentation to ensure the eligibility criteria have been met for new applicants.

Louisiana Scholarship Program Application Webinar

- **Please ensure that you attend the School Application Webinar (LSP Application for 2023-24) on December 5th at 2pm.**
- This webinar will cover the following topics related to the application process:
 - Verifying applicant eligibility in LEADs
 - How to use/read Demand reports
 - Eligibility Criteria
 - Match Process
 - Acceptable forms of documentation (ex. income, residency, etc)
 - Terminal grade students



Quarterly Reporting

SCP Quarter 2 Enrollment Reporting



**Thank you to all schools participating
in the School Choice Program for
Students with Exceptionalities for
100% completion on your Quarter 2
reporting ahead of the deadline.**

SCP: Quarter 2 Enrollment

- Schools will have 30 days from the last day of quarterly enrollment reporting period each quarter to report any enrollment issues.
- **All Payment Adjustment Forms for the School Choice Program for Quarter 2 must be submitted by November 30th**
- Any Payment Adjustment Forms for Quarter 2 submitted after November 30th will be considered on an individual basis and must include an explanation of the late submission.
 - Please note that late submissions are not guaranteed payment.

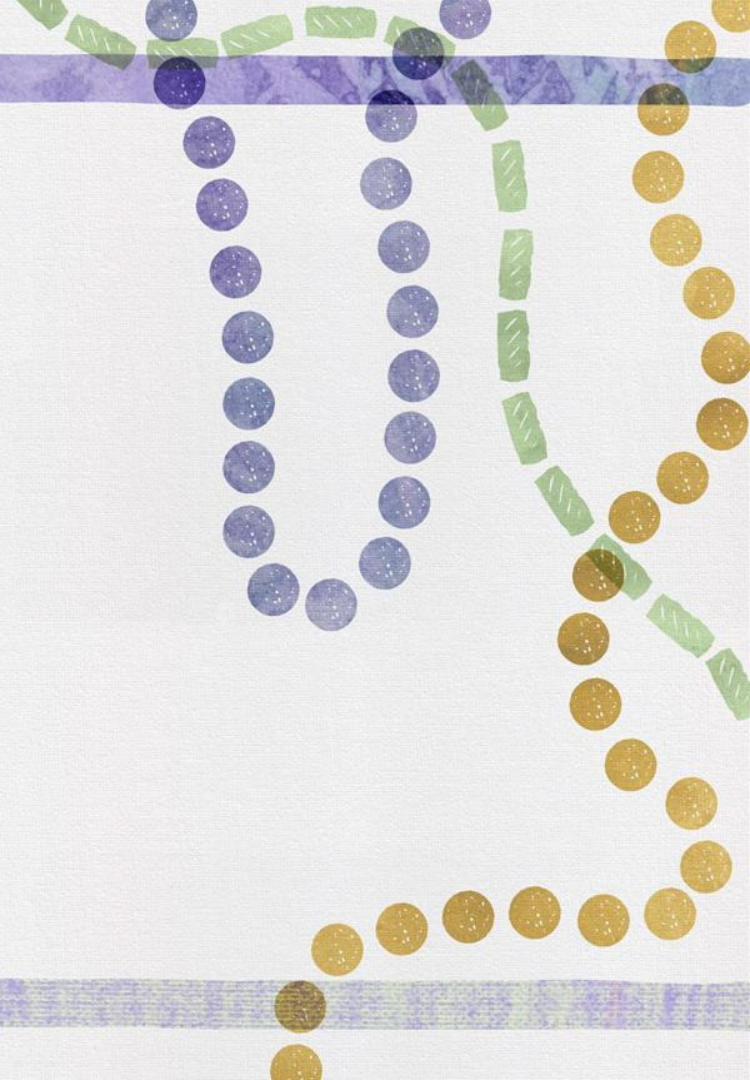
LSP Quarter 2 Enrollment Reporting

PROCESS	TIMELINE
Transfer Window Closes for Q2	November 25th
Quarter 2 enrollment Begins (SEE/LSP only)	December 1st - 5th
Last Day to submit Payment Adjustment Forms for Quarter 2-SEE only	January 3rd

LSP: Quarter 2 Enrollment

- Schools will have 30 days from the last day of quarterly enrollment reporting period each quarter to report any enrollment issues.
- **All Payment Adjustment Forms for the Louisiana Scholarship Program for Quarter 2 must be submitted by January 3rd.**
- Any Payment Adjustment Forms for Quarter 1 submitted after January 3rd will be considered on an individual basis and must include an explanation of the late submission.
 - Please note that late submissions are not guaranteed payment.

Application Timeline and Important Dates



2023-2024 LSP Application Timeline

- One statewide application for all families via the [Louisiana Believes Website](#) on December 12th.
 - The application will close on January 27th.
- One timeline for application open and close date (Orleans and all parishes)

Louisiana Scholarship Program Important Dates

Date	Action
December 1st - 5th, 2022	Quarter 2 enrollment reporting
December 5th, 2022	School Application Webinar (LSP Application for 2023-24)
December 6th, 2022	Parent Application Webinar (LSP Application for 2023-24)
December 7th, 2022	Deadline to submit NOI Confirmation (changes only)
December 12th, 2022	Statewide SY 2023-24 LSP application opens for all schools
January 3rd, 2023	Last day to submit Payment Adjustment Forms for Quarter 2
January 27th, 2023	Statewide SY 2023-24 LSP application closes for all schools

School Choice Program for Student with Exceptionalities Important Dates

Date	Action
November 30th, 2022	Last day to submit Payment Adjustment Forms for Quarter 2
January 30th, 2023	School Application Webinar for School Choice Program SY 2023-24
January 31st, 2023	Parent Application Webinar for School Choice Program SY 2023-24
February 1st, 2023	SY 2023-24 School Choice Program application opens
March 6th, 2023	SY 2023-24 School Choice Program application closes



School Support

Strategies for Success

- We will have check-ins for all new participating schools, new scholarship managers, and those needing additional support. These check-ins will be used to provide additional support and step-by-step training for those that are learning the program.
- You can access the meeting using this link:
<https://ldoe.zoom.us/j/93717548403>
- Topics that will be covered in our next check-in will included:
 - How to complete Tuition and Fees / Allowable Fees
 - How to complete the Notice of Intent
 - Upcoming Application Process

Office Hours

- We are extending office hours to provide one-on-one assistance regarding any questions you may have.
 - Offered each week for **school administrators and other school system employees**
 - Tuesdays and Thursdays from **10:30 a.m. to 12:00 p.m.**
- Booking: <https://www.picktime.com/LDEnonpublicschools>
- In order to make sure that every school gets an opportunity to schedule a call, each call will be limited to 15 minutes.



Office Hours

- When booking, include a description of what you'd like to discuss during the call in the “booking notes” section of the form. This will ensure that our staff is prepared ahead of the call and can effectively use the time to address your concerns.
- If you miss your scheduled time, you will need to book a new appointment time. If you have any questions about Office Hours, please reach out to us at studentscholarships@la.gov for assistance.

This service is not available to families. Families with questions should submit them to studentscholarships@la.gov





Communications

Emails

Emails from studentscholarships@la.gov and program staff are the first source of communication for all participating schools.

- Important links, documents, instructions, and urgent deadlines are communicated via email.
- It is required that all principals and scholarship managers read/review the emails and documents being sent regarding the program.
- Not reading the emails results in incorrect submissions and/or missed deadlines.

If you have any questions about the content of emails, please respond directly to the email or contact us at studentscholarships@la.gov for assistance.

Newsletter

The Nonpublic newsletter goes out every Thursday at 4:30pm.

- The latest information and program updates are always provided in the newsletter. This is an important source of information provided to all participating schools.
- It is important that you review the newsletter for all updates regarding deadlines, program updates, and requirements.
- Please ensure at least one person from your school is accessing the newsletter weekly.

You can sign up for the newsletter using this link [here](#).

Program Calendar

In order to provide better support for all participating scholarship schools, we have released a program calendar for the 2022-23 school year.

- The annual calendar include all important dates for the upcoming school year.
 - You can access the 2022-23 Nonpublic Annual Reporting Calendar [here](#).
- A monthly version of the calendar will be included in every newsletter.

Please Note: All dates are tentative and may change. Please review future issues of the Nonpublic newsletter for all updates.

If you have questions or any issues accessing the calendar, please contact us at studentscholarships@la.gov for assistance.

LEADS

- LEADs can be accessed here: <https://leads5.doe.louisiana.gov/ptl>
- Passwords expire every 60 days and must be reset here: <https://password.doe.louisiana.gov/>
- To gain access to SEE in LEADS click [here](#) to complete the request



Username, Passcodes, and Unlocks

- If you are having a problem with your account please always include your **username** and **school code** in the email
- Please remember to only send one email request stating problem to studentscholarships@la.gov



Thank You For Joining Today's Call.

Helpful Links

- [LDOE Nonpublic Library](#)
- [LDOE School Choice Library](#)
- [Federal Poverty Guidelines](#)
- [Louisiana Scholarship Program](#)
- [Statewide Scholarship Application](#)

Information regarding Nonpublic and Scholarship action items can be found in the [LDOE Weekly Nonpublic Newsletter](#). The newsletter is released every Thursday at 4:30 pm. You can sign up for the newsletter using this link [here](#).

FOR QUESTIONS ABOUT	EMAIL
Louisiana Scholarship Program School Choice Program for Students with Exceptionalities	studentscholarships@la.gov

