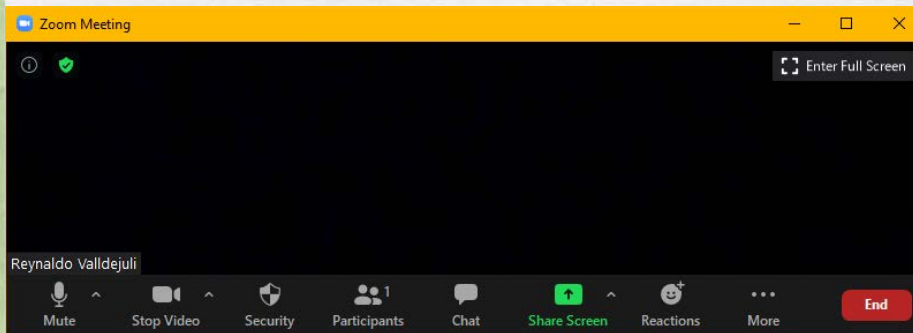


Zoom Meeting Preparation

- Please make sure your phone or computer is muted to minimize background noise.
 - To do this, hover over the bottom left-hand side of your screen and click “Mute.”
- Please make sure you have turned off your camera to save bandwidth and prevent any connectivity issues.
 - To do this, hover over the bottom left-hand side of your screen and click “Stop Video.”
- Please submit questions during the presentation in the “Chat” function located on the bottom of your screen.



If you require an interpreter or have other accessibility needs for future LDOE meetings, please contact LDOEcommunications@la.gov.

LOUISIANA DEPARTMENT OF EDUCATION

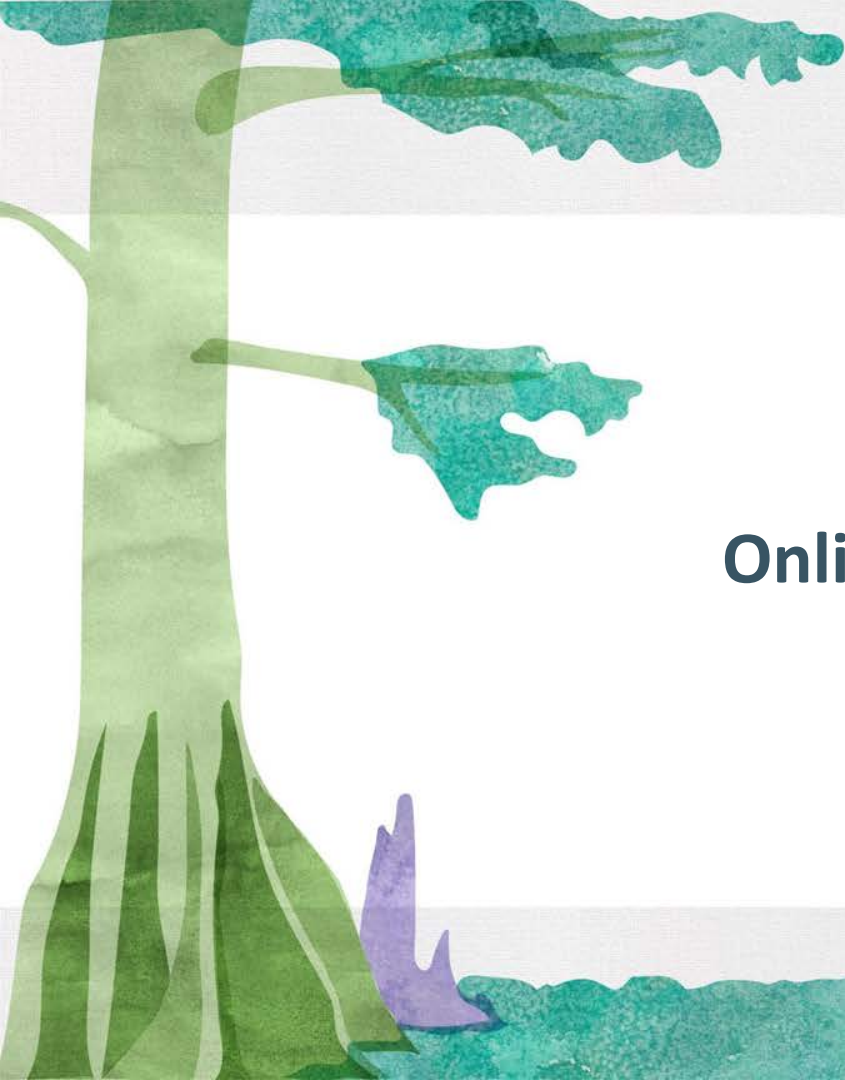


**Nutrition Support Monthly
Call
October 4, 2022**

Agenda

- Online Applications
- Reimbursement Rates for SY 22-23
- Administrative Reviews
- Pandemic Electronic Benefits Transfer (P-EBT) and Local Level Funding
- SY 2022-2023 Flexibilities
- Transitional Standards on Milk, Whole Grains and Sodium Final Rule
- Medicaid Demonstration Project
- Training Updates
- Other Program Reminders





Online Application for SY 2022-2023



Past Due: Online Application

- If you have submitted your online application and there were errors, you should have received an e-mail or phone call from SA staff.
- Failure to submit the required documentation in a timely manner will prohibit you from submitting your claims.
- The 60 calendar day deadline for submitting claims still applies.



Reimbursement Rates for SY 22-23

NSLP Rates

SCHOOL PROGRAMS

MEAL, SNACK AND MILK PAYMENTS TO STATES AND SCHOOL FOOD AUTHORITIES

Expressed in Dollars or Fractions Thereof

Effective for the School Year Beginning July 1, 2022 through June 30, 2023

NATIONAL SCHOOL LUNCH PROGRAM ^{1,3}		LESS THAN 60%	LESS THAN 60% + 8 cents ²	60% OR MORE	60% or MORE + 8 cents ²	MAXIMUM RATE	MAXIMUM RATE + 8 cents ²
CONTIGUOUS STATES	PAID	0.77	0.85	0.79	0.87	0.85	0.93
	REDUCED	3.93	4.01	3.95	4.03	4.10	4.18
	FREE	4.33	4.41	4.35	4.43	4.50	4.58
ALASKA	PAID	1.01	1.09	1.03	1.11	1.11	1.19
	REDUCED	6.37	6.45	6.39	6.47	6.62	6.70
	FREE	6.77	6.85	6.79	6.87	7.02	7.10
GUAM, HAWAII, PUERTO RICO and VIRGIN ISLANDS	PAID	0.84	0.92	0.86	0.94	0.92	1.00
	REDUCED	4.60	4.68	4.62	4.70	4.79	4.87
	FREE	5.00	5.08	5.02	5.10	5.19	5.27

SBP Rates

SCHOOL BREAKFAST PROGRAM³		NON-SEVERE NEED	SEVERE NEED
<i>Temporary Additional Breakfast Reimbursement</i>			
CONTIGUOUS STATES	PAID	0.50	0.50
	REDUCED PRICE	1.96	2.37
	FREE	2.26	2.67
ALASKA	PAID	0.69	0.69
	REDUCED PRICE	3.23	3.91
	FREE	3.53	4.21
GUAM, HAWAII, PUERTO RICO and VIRGIN ISLANDS	PAID	0.55	0.55
	REDUCED PRICE	2.31	2.79
	FREE	2.61	3.09

Snack Rates

AFTERSCHOOL SNACKS SERVED IN AFTERSCHOOL CARE PROGRAMS		
CONTIGUOUS STATES	PAID	0.09
	REDUCED PRICE	0.54
	FREE	1.08
ALASKA	PAID	0.16
	REDUCED PRICE	0.87
	FREE	1.75
GUAM, HAWAII, PUERTO RICO and VIRGIN ISLANDS	PAID	0.11
	REDUCED PRICE	0.63
	FREE	1.26



Administrative Reviews

SY 22-23 AR Schedule

- The [AR Schedule](#) (without dates) is posted under Resources
- CN Resource will be conducting all ARs for SY 22-23
- All review dates will be posted to the schedule this week





Pandemic Electronic Benefits Transfer (P-EBT) and Local Level Funding

Summer 2022 P-EBT

- All students in K-12 schools are eligible if they receive free or reduced-priced meals and were in school in May 2022.
- Eligible children will receive a total payment of \$391 to cover June and July. Payments will be issued in two installments.
 - First payment: \$195
 - Second payment: \$196
- Benefits were issued beginning in late summer and into the autumn months and will be issued on the same card that was received for the 2020-21 or 2021-22 school year.

Summer 2022 P-EBT Benefits

Eligibility Requirements

- Students attended school at least 1 day in May 2022.
- Students whose school they attended in May, participated in CEP in SY 21-22 or qualified for free/reduced price meals under the NSLP/SBP. This includes:
 - Students who received P-EBT benefits during May 2021 including those who graduated.
 - Students who were eligible for free or reduced price school meals under the NSLP or SBP in SY 21-22 or attended a CEP school in May.
- Children who are determined newly eligible for free or reduced priced meals, including those who submitted free/reduced price lunch applications by COB Friday, July 29, 2022.

P-EBT Fund Expungement

All federal benefits issued (including P-EBT) by DCFS have a 9-month time limit for use. The timer is reset to 9 months each time a purchase is made.

Families were sent letters to inform recipients that they have benefits that will soon expire. If they make a purchase, the timer will be reset. If they don't, any remaining benefits will be lost.

However, the card and the case are still active and any future benefits will be added to their card with the same 9-month time limit.



Support

Support Toolboxes

- [Data Manager Toolbox](#)

Helpful Links

- [PEBT website](#)
- [Parent Portal / LA CAFÉ login](#)

Contacts

- Support Response: DCFS.PEBTSupport@la.gov
- DCFS Helpdesk for Parents: 1-888-524-3578 or 1-888-LAHELPU
- EBT Card Center Helpdesk: 1-888-997-1117

We will continue to hold office hours each Tuesday at 10 am at <https://ldoe.zoom.us/j/98060200750>



Coming Soon: FY 2022 P-EBT Local Level Funding

In addition to benefits awarded directly to families, USDA has made funding available to all operators of the National School Lunch (NSLP) and National School Breakfast (SBP) responsible for activities related to the FY 2022 State Pandemic Electronic Benefit Transfer (P-EBT).

FY 22 P-EBT are all P-EBT activities that:

- Occurred between October 2021 – September 2022 in conjunction to P-EBT benefits issued for school year 2021-2022 and summer 2022.

LDOE will award a specified dollar amount to all eligible entities based on the number of P-EBT eligible children (same process utilized for FY 21 P-EBT Local Level Funding)

*Eligible program operators will not be required to submit an application to receive the funds

More information to come in the next few months.



SY 2022-2023 Flexibilities



Nationwide Waiver Updates for SY 2022-2023

- Fiscal Action Flexibility for Meal Pattern Violations Related to COVID-19 Supply Chain Disruptions Impacting School Meals in SY 2022-2023 – This waiver applies to the NSLP, SBP, and SSO and is available for any state where there is a supply chain disruption due to COVID-19. [Memo SFS-22-x152](#)

Additional Flexibilities

Paid Lunch Equity

- Waives the Paid Lunch Equity requirements for SY 2022-2023
- Pertains to the school lunch prices for SY 2022-2023

Carryover Eligibility (NSLP/SBP)

- **Allows schools that operated SSO in SY 2021-2022 to use the most recent free or reduced priced determinations since SY 2019-2020 during the 30-day carryover period of SY 2022-2023.**
- **Effective for the carryover period of SY 2022-2023**

Severe Need Reimbursement Rates for the SBP and the Two Cent Differential Reimbursement for the NSLP in SY 2022-2023 and SY 2023-2024 ([Memo SFS-22-x144](#))



Transitional Standards on Milk, Whole Grains and Sodium Final Rule

Transitional Standards

- On February 7, 2022, USDA published the Transitional Standards Final Rule.
- This rule provides certainty for the next two school years, while USDA work collaboratively on permanent standards.
- These standards went into effect on July 1, 2022 (this includes SSO operating in July 2022)
- See [Memo SFS-22-90](#) and [Memo SFS-22-91](#) for more information on the Transitional Rule.
- The [slides](#) and [video](#) from the Transitional Standard Training are posted on [LA Fit Kids](#)

Key Provisions: Flavored Milk

- Allows SFAs to offer flavored, low-fat (1 percent) milk at lunch and breakfast and as a beverage for sale a la carte
- Requires that unflavored milk (fat-free or low-fat) be available at each school meal service.
- Extends the transitional milk requirements to the Special Milk Program for Children and to the Child and Adult Care Food Program for children ages six and older and adult participants.
- This rule also clarifies that lactose free and reduced-lactose fluid milk meet the Special Milk Program for Children and the Child and Adult Care Food Program requirements for fluid milk to provide consistency across all Child Nutrition Programs.

Key Provisions: Whole Grains

- Requires that at least 80 percent of the weekly grains in the NSLP and SBP be whole grain rich
- The remaining 20 percent weekly grains offered must be enriched

*Whole grain-rich products are those grain products with at least 50 percent whole grains and the remaining grains, if any, are enriched.

Key Provisions: Sodium

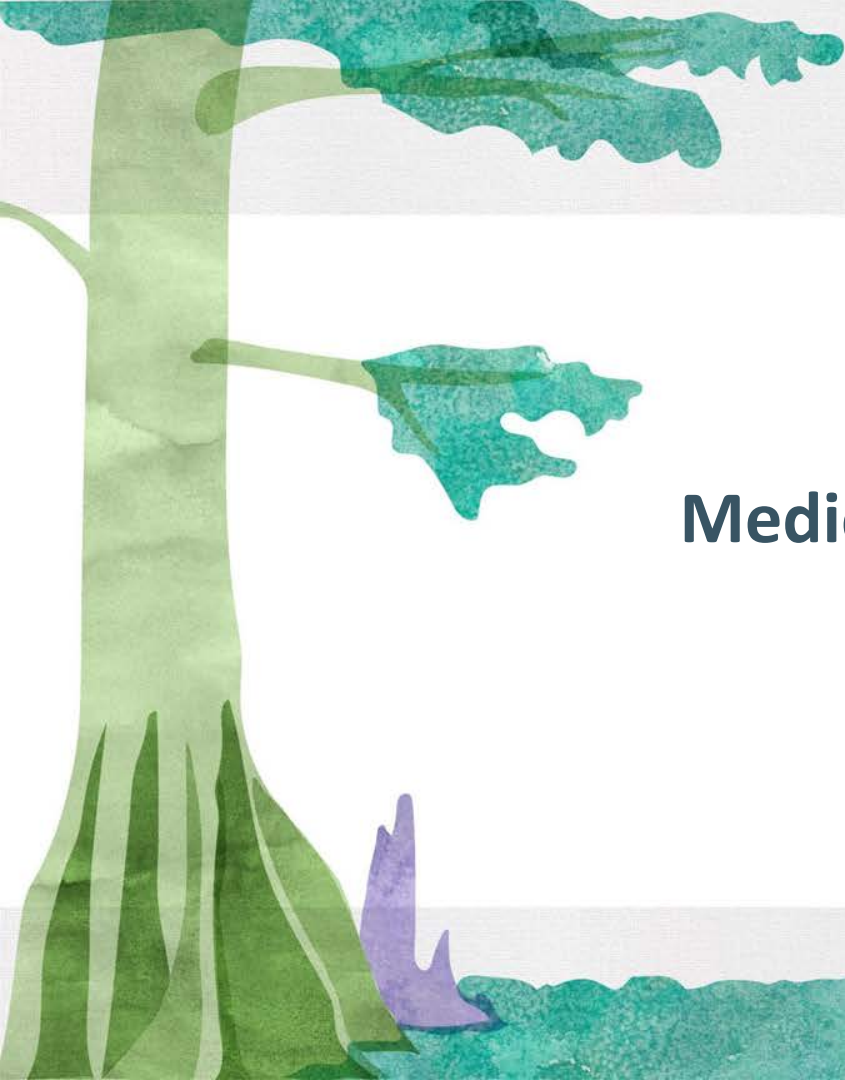
- Retains Sodium Target 1 for NSLP and SBP through SY 2022-2023.
- Retains Sodium Target 1 for SBP in SY 2023-2024
- Institutes a Sodium Interim Target 1A for NSLP for SY 2023-2024

National School Lunch Program: Sodium Timeline & Limits

Age/Grade Group	Target 1: Effective July 1, 2022 (mg)	Interim Target 1A: Effective July 1, 2023 (mg)
K-5	≤ 1,230	≤ 1,110
6-8	≤ 1,360	≤ 1,225
9-12	≤ 1,420	≤ 1,280

School Breakfast Program: Sodium Limits

Age/Grade Group	Target 1 (mg)
K-5	≤ 540
6-8	≤ 600
9-12	≤ 640



Medicaid Demonstration Project 2022- 23

Direct Certification with Medicaid

Louisiana is one of eight states selected to participate in the expansion of a demonstration project to evaluate the impact of using Medicaid eligibility data to directly certify students for free and reduced-price school meals, beginning in **school year 2022-2023**.

State agencies match school enrollment data with Medicaid eligibility data to identify children who receive Medicaid, or live with a child who receives Medicaid, and whose family income, before expenses and deductions, does not exceed:

- 130 percent of the Federal Poverty Level for free school meal eligibility; or
- 185 percent of the Federal Poverty Level for reduced price meal eligibility

Please note: not all children receiving Medicaid will receive free or reduced meals.

Reduced Priced Children Determined Through Medicaid

Due to differences in household definition and income assessments between programs, some children directly certified for reduced-price meals through Medicaid may have been eligible for free meals if the household applied.

The USDA requires that these households receive notice of the income level used and be offered the opportunity to apply if their income, based on National School Lunch Program (NSLP) eligibility policies, is within the limit for free meals (using the NSLP's current income eligibility guidelines).

Direct Certification using Handwritten Case Numbers

Under the Medicaid demonstration, children are not considered to be categorically eligible and may be directly certified only via an automated data matching process with the Medicaid eligibility records.

Therefore, households are not allowed to handwrite their Medicaid case number on the application or provide “proof” of Medicaid in order for their child to be eligible for free or reduced-price meals.

Negative Impact and Medicaid Determination

Students already certified for free or reduced-price meals based on an application or direct certification with another program cannot be negatively impacted by the match with Medicaid data.

If a local educational agency (LEA) has determined that a child is directly certified as reduced-price eligible through Medicaid, and the child is determined to be directly certified through SNAP, TANF or FDPIR or identified as homeless, a runaway, enrolled in a federally funded Head Start Program, or is a foster child; the LEA's determination supersedes the Medicaid reduced-price status.



Training Updates

Upcoming Virtual Trainings

Registration is open for the [October trainings](#) (register at [Louisiana Fit Kids](#))

Next Monthly Call: Tuesday, November 1, 2022 at 1 p.m.

- Wednesday, October 5: Nutrition Support Office Hours at 1 p.m.
- Thursday, October 6: Professional Standards and Tracking Tool at 1 p.m.
- Tuesday, October 11: NSLP and SBP Transitional Meal Standards at 1 p.m.
- Thursday, October 13: Civil Rights at 1 p.m.
- Tuesday, October 18: Verification at 1 p.m.
- Thursday, October 20: Writing Food Specifications at 1 p.m.

Agenda and Zoom registration link are posted on [Louisiana Fit Kids](#). Training slides and recorded videos (when available) are also posted to [Louisiana Fit Kids](#)



Other Program Reminders

eScholar Direct Match

The [August SNAP and TANF data files](#) have been loaded into eScholar DirectMatch.

The [June, July, August Medicaid data files](#) have been loaded into eScholar

For assistance, please email Jayanthi.Sothirajah@la.gov

Second Allocation of Supply Chain Assistance Funds

Funds will be distributed by state agencies to schools across the country, so they can purchase domestically grown foods for their meal programs.

This assistance builds on the \$1 billion in supply chain assistance funds USDA previously allocated in December 2021, which states can use this school year and next school year to provide schools with funding for commodity purchases, according to the release.

No additional documentation is needed from SFAs. Payments were issued 10/3. The reference used was FY23 SCA and the Header Text was FNS Supply Chain Assistance.

Memo will be posted soon.

Coming Soon: Third Allocation of Supply Chain Assistance Funds

Because the underlying conditions fueling supply chain disruptions and other economic uncertainty remain significant in many parts of the country, FNS is providing an additional \$471.5 million in SCA funds

State agencies will distribute this third round of SCA funding to eligible School Food Authorities (SFAs) via the same formula used to distribute the first and second rounds of funds.

SCA funds remain limited to the purchase of unprocessed or minimally processed domestic food products.

More information will be provided at a later date.

Coming Soon: Equipment Grant

The USDA has awarded Louisiana funds to be distributed to SFAs participating in the NSLP to purchase equipment

Schools approved for participation in the National School Lunch Program (NSLP) that participated in SSO/SFSP as part of COVID-19 flexibilities are eligible to apply for the grant opportunity.

Priority will be given to schools where the greatest percentage of enrolled students are eligible for free or reduced price meals.

The application period has been postponed. A new application period will be announced soon.

Reminder: Procurement

- Please ensure that all state procurement laws and regulations are followed
- On May 31, 2022, Governor John Bel Edwards signed House Bill 221 (Act 204) into law.
- Increases the micro-purchase threshold from \$10,000 to \$30,000 and the small purchase threshold from \$30,000 to \$60,000.
- Normal purchasing guidelines regarding quotes with small purchases still apply
- Effective date: **August 1, 2022**

Questions

Contact the
LDOE Division of Nutrition Support at
childnutritionprograms@la.gov or
225-342-9661

