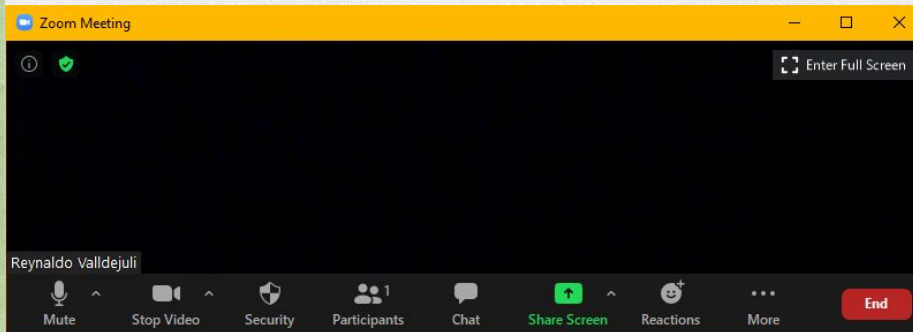


Zoom Meeting Preparation

- Please make sure your phone or computer is muted to minimize background noise.
 - To do this, hover over the bottom left-hand side of your screen and click “Mute.”
- Please make sure you have turned off your camera to save bandwidth and prevent any connectivity issues.
 - To do this, hover over the bottom left-hand side of your screen and click “Stop Video.”
- Please submit questions during the presentation in the “Chat” function located on the bottom of your screen.



If you require an interpreter or have other accessibility needs for future LDOE meetings, please contact LDOEcommunications@la.gov.

LOUISIANA DEPARTMENT OF EDUCATION

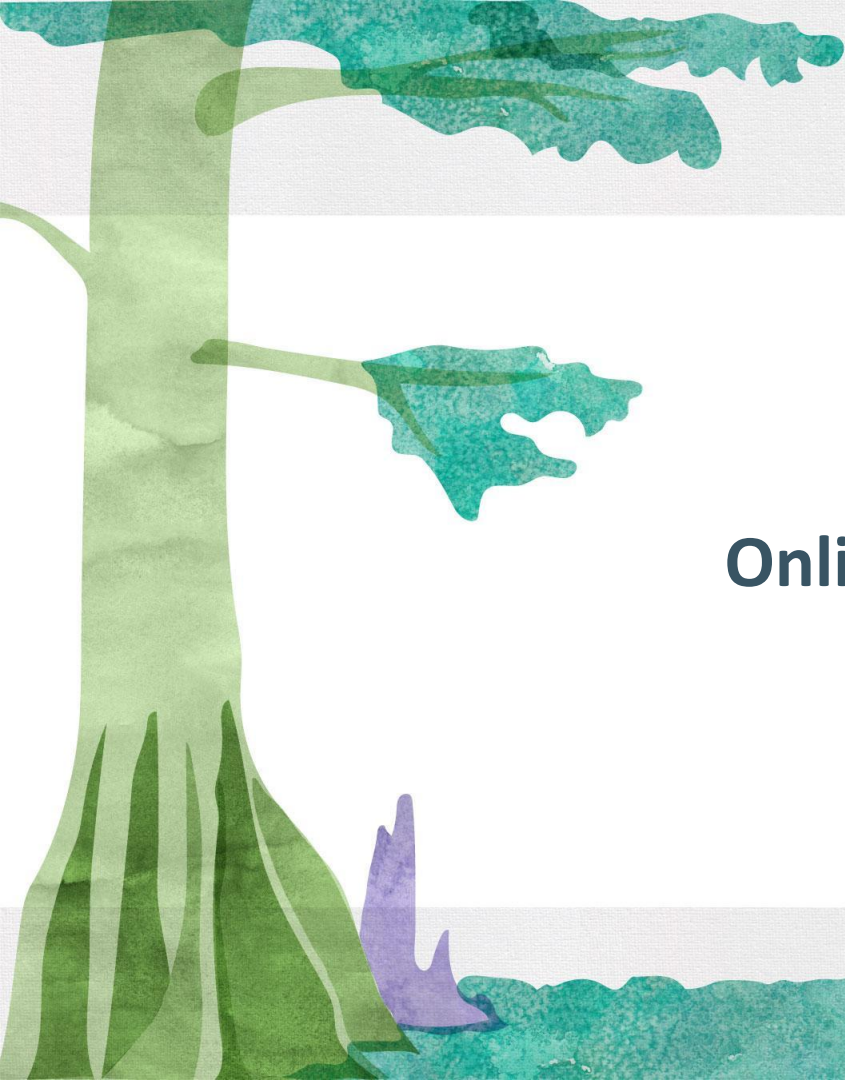


**Nutrition Support Monthly
Call
September 6, 2022**

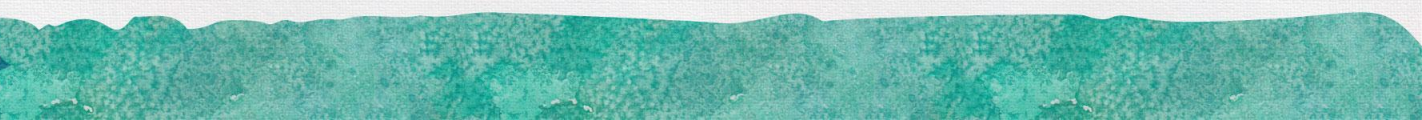
Agenda

- Online Applications
- Reimbursement Rates for SY 22-23
- Pandemic Electronic Benefits Transfer (P-EBT) and Local Level Funding
- Possible COVID Specific Instance Waivers
- Additional SY 2022-2023 Flexibilities
- eScholar Updates and CEP Manager
- Training Updates
- Other Program Reminders





Online Application for SY 2022-2023



Online Application

- The School Food Service Online application is now open and accessible through the CNP website (<http://cnp.doe.louisiana.gov>) .
- Deadline for submission was **Friday, August 26, 2022.**
- The following seven (7) forms must be completed for participation in SY 22-23:
 - Waivers
 - Policy Checklist
 - Schedule A
 - Collection Procedures
 - Collection Officials
 - Labor Expenses
 - Income and Expenses

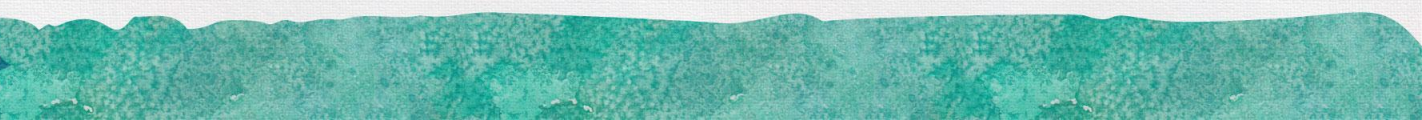
[Memo SFS-22-x157](#)

Online Application

- If you have submitted your online application and there were errors, you should have received an e-mail or phone call from SA staff.
- Remember: Failure to submit the required documentation in a timely manner will prohibit you from submitting your July or August claim.



Reimbursement Rates for SY 22-23



NSLP Rates

SCHOOL PROGRAMS

MEAL, SNACK AND MILK PAYMENTS TO STATES AND SCHOOL FOOD AUTHORITIES

Expressed in Dollars or Fractions Thereof

Effective for the School Year Beginning July 1, 2022 through June 30, 2023

NATIONAL SCHOOL LUNCH PROGRAM ^{1,3}		LESS THAN 60%	LESS THAN 60% + 8 cents ²	60% OR MORE	60% or MORE + 8 cents ²	MAXIMUM RATE	MAXIMUM RATE + 8 cents ²
CONTIGUOUS STATES	PAID	0.77	0.85	0.79	0.87	0.85	0.93
	REDUCED	3.93	4.01	3.95	4.03	4.10	4.18
	FREE	4.33	4.41	4.35	4.43	4.50	4.58
ALASKA	PAID	1.01	1.09	1.03	1.11	1.11	1.19
	REDUCED	6.37	6.45	6.39	6.47	6.62	6.70
	FREE	6.77	6.85	6.79	6.87	7.02	7.10
GUAM, HAWAII, PUERTO RICO and VIRGIN ISLANDS	PAID	0.84	0.92	0.86	0.94	0.92	1.00
	REDUCED	4.60	4.68	4.62	4.70	4.79	4.87
	FREE	5.00	5.08	5.02	5.10	5.19	5.27

SBP Rates

SCHOOL BREAKFAST PROGRAM³		NON-SEVERE NEED	SEVERE NEED
<i>Temporary Additional Breakfast Reimbursement</i>			
CONTIGUOUS STATES	PAID	0.50	0.50
	REDUCED PRICE	1.96	2.37
	FREE	2.26	2.67
ALASKA	PAID	0.69	0.69
	REDUCED PRICE	3.23	3.91
	FREE	3.53	4.21
GUAM, HAWAII, PUERTO RICO and VIRGIN ISLANDS	PAID	0.55	0.55
	REDUCED PRICE	2.31	2.79
	FREE	2.61	3.09

Snack Rates

AFTERSCHOOL SNACKS SERVED IN AFTERSCHOOL CARE PROGRAMS		
CONTIGUOUS STATES	PAID	0.09
	REDUCED PRICE	0.54
	FREE	1.08
ALASKA	PAID	0.16
	REDUCED PRICE	0.87
	FREE	1.75
GUAM, HAWAII, PUERTO RICO and VIRGIN ISLANDS	PAID	0.11
	REDUCED PRICE	0.63
	FREE	1.26



Pandemic Electronic Benefits Transfer (P-EBT) and Local Level Funding



Summer 2022 P-EBT

- All students in K-12 schools are eligible if they receive free or reduced-priced meals and were in school in May 2022.
- Eligible children will receive a total payment of \$391 to cover June and July. Payments will be issued in two installments.
 - First payment: \$195
 - Second payment: \$196
- Benefits will be issued beginning in late summer and into the autumn months and will be issued on the same card that was received for the 2020-21 or 2021-22 school year.

Summer 2022 P-EBT Benefits

Eligibility Requirements

- Students attended school at least 1 day in May 2022.
- Students whose school they attended in May, participated in CEP in SY 21-22 or qualified for free/reduced price meals under the NSLP/SBP. This includes:
 - Students who received P-EBT benefits during May 2021 including those who graduated.
 - Students who were eligible for free or reduced price school meals under the NSLP or SBP in SY 21-22 or attended a CEP school in May.
- Children who are determined newly eligible for free or reduced priced meals, including those who submitted free/reduced price lunch applications by COB Friday, July 29, 2022.

Summer Data File Submission

The Summer Data File submissions must be submitted via the [P-EBT Admin Portal](#). You must have a school system MyLA.GOV account to access the portal.

Submission Timeline/Deadline

Data managers can begin submitting Summer data files on August 29th. **All summer data must be submitted by Sept 23, 2022.**

Issuance Dates

Run Date	Available/ Issue Date	PEBT Type
Aug 30	Aug 31	Summer PEBT Automatic May Kids (July benefit)
Sept 6	Sept 7	Summer PEBT Spreadsheet kids (June benefit)
Sept 27	Sept 28	Summer PEBT Spreadsheet kids (June+July benefit)
Oct 4	Oct 5	PEBT-CC (Fall benefits)
Oct 11	Oct 12	PEBT-CC (Spring benefits)
Oct 18	Oct 19	PEBT-CC (Summer (June) benefits)
Oct 25	Oct 26	PEBT-CC (Summer (July) benefits)

Note: Future Issuances for PEBT will be announced in November

Submission Deadlines & Windows

Submission Deadline for SY 2020-2021 (Aug-May and Summer)

All spreadsheets and manual updates for Aug-May 2020-21 and Summer (June & July) 2021 must be submitted by **Sept 23, 2022**. After this time, schools **will not** be able to submit any new or updated benefits for SY 2020-2021.

Submissions for SY 2021-2022 (Aug-May & Summer) Windows

The initial window for submitting for SY 2021-22 Aug-May and Summer (June & July) spreadsheets and manual data changes will **close on Sept. 23, 2022**. A new window will open for any updates and changes in November 2022. The plan is to close-out all SY 2021-22 submissions by the end of the year (Dec. 31, 2022).

Address Changes

The updates within the [P-EBT Admin Portal](#) for viewing and responding to address change requests/tasks has been implemented; therefore no additional spreadsheets will be uploaded to the FTP site. Data Managers should now be able to complete all tasks within the [P-EBT Admin Portal](#).

How to Request Administrative Access

Email the following information to DCFS.PEBTSupport@la.gov. You will receive a response email approving your request and then a follow-up email letting you know when the access has been granted.

- Name (first and last):
- MyLAGov User name:
- Email Address (the same one you used with MyLAGov):
- LEA Site Code:
- LEA Name:
- School Site Code:
- School Name:

REMEMBER to list all school sites within your LEA where you need administrative access.

P-EBT Fund Expungement

All federal benefits issued (including P-EBT) by DCFS have a 9-month time limit for use. The timer is reset to 9 months each time a purchase is made.

Families were sent letters to inform recipients that they have benefits that will soon expire. If they make a purchase, the timer will be reset. If they don't, any remaining benefits will be lost.

However, the card and the case are still active and any future benefits will be added to their card with the same 9-month time limit.

LDOE is continuing to receive inquiries regarding fund expungement.



Support

Support Toolboxes

- [Data Manager Toolbox](#)

Helpful Links

- [PEBT website](#)
- [Parent Portal](#) / [LA CAFÉ login](#)

Contacts

- Support Response: DCFS.PEBTSupport@la.gov
- DCFS Helpdesk for Parents: 1-888-524-3578 or 1-888-LAHELPU
- EBT Card Center Helpdesk: 1-888-997-1117

We will continue to hold office hours each Tuesday at 10 am at <https://ldoe.zoom.us/j/98060200750>



Coming Soon: FY 2022 P-EBT Local Level Funding

In addition to benefits awarded directly to families, USDA has made funding available to all operators of the National School Lunch (NSLP) and National School Breakfast (SBP) responsible for activities related to the FY 2022 State Pandemic Electronic Benefit Transfer (P-EBT).

FY 22 P-EBT are all P-EBT activities that:

- Occurred between October 2021 – September 2022 in conjunction to P-EBT benefits issued for school year 2021-2022 and summer 2022.

LDOE will award a specified dollar amount to all eligible entities based on the number of P-EBT eligible children (same process utilized for FY 21 P-EBT Local Level Funding)

*Eligible program operators will not be required to submit an application to receive the funds

More information to come in the next few months.

Possible COVID Specific Instance Waivers



Possible COVID Specific Instance Waivers

- Non-Congregate Meal Service
- Parent/Guardian Pick-Up
- Meal Service Times
- Offer versus Serve

These waivers are NOT Nationwide Waivers.

Possible COVID Specific Instance Waivers

These waivers are only to be granted for COVID instances when congregate feeding is limited.

These waivers are intended to be a “safety net” if COVID cases spike over the summer months.

Only approved for short durations of time

Approval will be based on specific criteria related to COVID instances

Possible COVID Waivers: NSLP/SBP

Non-Congregate Meal Service

- Waives the requirement that meals must be served in a congregate setting

Parent and Guardian Meal Pick Up

- Waives the requirement that meals may only be served directly to children

Meal Service Times

- Waives the requirements that set meal time parameters for school lunch and breakfast

Offer versus Serve

- Waives the requirement to serve school lunches to high school students using offer versus serve

Effective until June 30, 2023 but only in instances when congregate service is limited because of COVID

Possible COVID Waivers: FFVP

Parent Guardian Pick Up

- Allows SFAs to provide FFVP foods to parents or guardians of children whose elementary school is closed and who are learning virtually

Alternate Site

- Allows the SA to approve SFAs participating in FFVP to provide FFVP foods at sites that are not FFVP elementary schools when FFVP elementary schools are closed

Effective July 1, 2022 through June 30, 2023

Only to be implemented when congregate meal service is limited because of COVID

Possible COVID Waivers: Unanticipated School Closures

Non-Congregate Meal Service

- Waives the requirement that meals must be served in a congregate setting

Parent and Guardian Meal Pick Up

- Waives the requirement that meals may only be served directly to children

Meal Service Times

- Waives the requirements that set meal time parameters

Service of Meals at School Sites during Unanticipated School Closures

- Waives the requirement that limits the operation of SFSP during an unanticipated school closure to non-school sites

Effective October 1, 2022- April 30, 2023

Possible COVID Waivers: CACFP

Non-Congregate Meal Service

- Waives the requirement that meals must be served in a congregate setting

Parent and Guardian Meal Pick Up

- Waives the requirement that meals may only be served directly to eligible participants

Meal Service Times

- Waives the requirements that set meal time parameters

Onsite Monitoring Requirements

- Waives the on-site monitoring requirements and allows for monitoring through off-site means

Effective July 1, 2022- June 20, 2023



Additional SY 2022-2023 Flexibilities



Nationwide Waiver Updates for SY 2022-2023

- Fiscal Action Flexibility for Meal Pattern Violations Related to COVID-19 Supply Chain Disruptions Impacting School Meals in SY 2022-2023 – This waiver applies to the NSLP, SBP, and SSO and is available for any state where there is a supply chain disruption due to COVID-19. [Memo SFS-22-x152](#)

School Year Administration

Local Wellness Policy Triennial Assessment

- Provides a new triennial assessment deadline of June 30, 2023, instead of June 30, 2022

Food Service Management Company Contract Duration

- Permits SFAs and SFSP Sponsors to extend existing FSMC contracts that would not otherwise be eligible for extension through June 30, 2023

Administrative Review Onsite Requirements

- Excludes the onsite monitoring requirements and allows for off-site monitoring processes

Effective through June 30, 2023 and should be used only for the extent and duration needed

Additional Flexibilities

Paid Lunch Equity

- Waives the Paid Lunch Equity requirements for SY 2022-2023
- Pertains to the school lunch prices for SY 2022-2023

Carryover Eligibility (NSLP/SBP)

- **Allows schools that operated SSO in ST 2021-2022 to use the most recent free or reduced priced determinations since SY 2019-2020 during the 30-day carryover period of SY 2022-2023.**
- **Effective for the carryover period of SY 2022-2023**

Severe Need Reimbursement Rates for the SBP and the Two Cent Differential Reimbursement for the NSLP in SY 2022-2023 and SY 2023-2024 ([Memo SFS-22-x144](#))



Medicaid Demonstration Project 2022-23



Direct Certification with Medicaid

In December 14, the USDA announced that Louisiana is one of eight states selected to participate in the expansion of a demonstration project to evaluate the impact of using Medicaid eligibility data to directly certify students for free and reduced-price school meals, beginning in **school year 2022-2023**.

Under the demonstrations, State agencies match school enrollment data with Medicaid eligibility data to identify children who receive Medicaid, or live with a child who receives Medicaid, and whose family income, before expenses and deductions, does not exceed:

- 130 percent of the Federal Poverty Level for free school meal eligibility; or
- 185 percent of the Federal Poverty Level for reduced price meal eligibility

Louisiana Medicaid Matching Process

The Matching Process for Medicaid-Free and Medicaid Reduced will be the same as used currently for SNAP and TANF

See eScholar conducted [DirectMatch training for End Users](#) for an overview of the DirectMatch system

Medicaid Free and Medicaid reduced will be two separate matching choices. Two files will be available for download, one for Medicaid-free and one for Medicaid-reduced

Medicaid File Update

- An error was noted in the Medicaid file loaded in late August
- The file has been removed from eScholar DirectMatch
- A new file will be loaded in the next few weeks
- If a school system did download the file, please contact your food service software to reverse the import

[Memo SFS 22-x184](#)

Reduced Priced Children Determined Through Medicaid

Due to differences in household definition and income assessments between programs, some children directly certified for reduced-price meals through Medicaid may have been eligible for free meals if the household applied.

The USDA requires that these households receive notice of the income level used and be offered the opportunity to apply if their income, based on National School Lunch Program (NSLP) eligibility policies, is within the limit for free meals (using the NSLP's current income eligibility guidelines).

Direct Certification using Handwritten Case Numbers

Under the Medicaid demonstration, children are not considered to be categorically eligible and may be directly certified only via an automated data matching process with the Medicaid eligibility records.

Therefore, households are not allowed to handwrite their Medicaid case number on the application or provide “proof” of Medicaid in order for their child to be eligible for free or reduced-price meals.

Negative Impact and Medicaid Determination

Students already certified for free or reduced-price meals based on an application or direct certification with another program cannot be negatively impacted by the match with Medicaid data.

If a local educational agency (LEA) has determined that a child is directly certified as reduced-price eligible through Medicaid, and the child is determined to be directly certified through SNAP, TANF or FDPIR or identified as homeless, a runaway, enrolled in a federally funded Head Start Program, or is a foster child; the LEA's determination supersedes the Medicaid reduced-price status.



eScholar Updates and CEP Manager



eScholar Direct Match

The July SNAP and TANF data files have been loaded into eScholar DirectMatch.

For assistance, please email Jayanthi.Sothirajah@la.gov

eScholar CEP Manager

Now that the Population Data submissions have closed, the CEP Elections are now open

All SFAs should submit the CEP elections for SY 2022-2023 by September 30, 2022.

CEP Training: [Louisiana Fit Kids - Training Slides](#)

- [Feb 22 slide deck](#) [Feb 22 recording](#)
- [March 29 slide deck](#) [March 29 recording](#)

Training Updates



Upcoming Virtual Trainings

Registration is open for the September trainings (register at [Louisiana Fit Kids](#))

Next Monthly Call: Tuesday, October 4, 2022 at 1 p.m.

- Wednesday, September 7: Nutrition Support Office Hours at 1 p.m.
- Thursday, September 15: Verification at 1 p.m.
- Tuesday, September 20: Meal Claiming at 1 p.m.
- Thursday, September 22: Whole Grains at 1 p.m.
- Tuesday, September 27: NSLP Equipment Grants at 1 p.m.

Agenda and Zoom registration link are posted on [Louisiana Fit Kids](#). Training slides and recorded videos (when available) are also posted to [Louisiana Fit Kids](#)

Wed. Sept. 28th
8am – 1pm

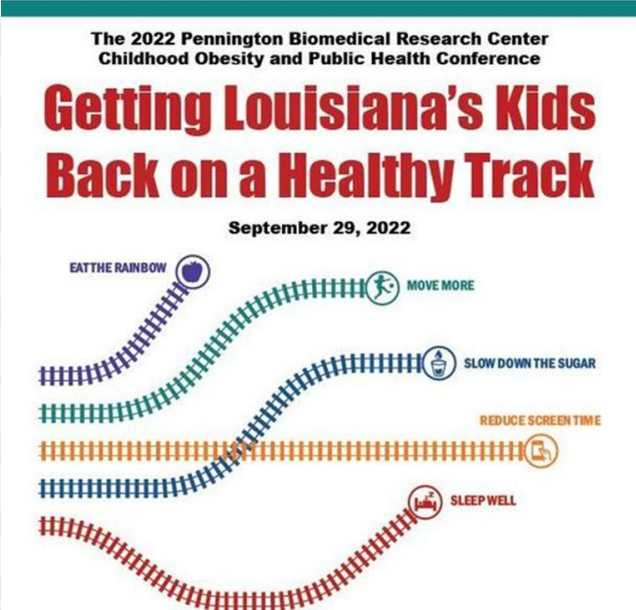
Farm to School
Gathering

Wed. Sept. 28th
1:15pm – 4:30pm

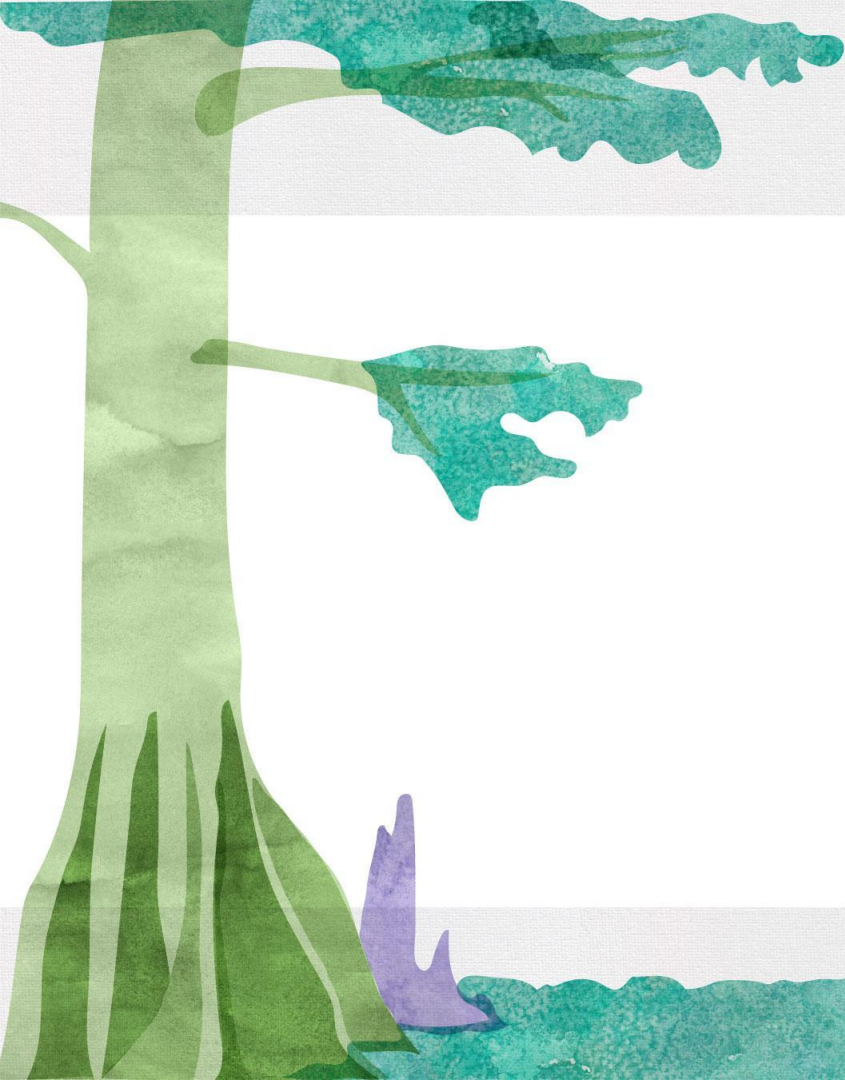
LDOE
State Update

Thurs. Sept. 29th
8:30am – 3:00pm

Childhood Obesity Conference



Register for all of these events @
www.louisianafitkids.com



Other Program Reminders



Reminder: Procurement

The Governor's proclamation which included the suspension of Louisiana Public Bid Law and allowed emergency procurement of goods and services necessary to respond to the COVID-19 emergency expired on **Wednesday, March 16, 2022**.

Please ensure that all state procurement laws and regulations are followed

However, please be reminded that an exception still exists in state law for procurement of local agricultural products and in support of Farm to School initiatives.

[Memo SFS-22-x103](#)

FSMC Contracts

The deadline for Charter Schools to submit their Food Service Management Company Contract or Agreement Amendment was June 1, 2022.

Contracts and contract amendment will be approved as of the date they are approved by the State Agency.

All FSMC contracts for the 2021-22 School Year end on June 30, 2022.

If your SFA is operating the Summer Food Service Program during the month of July 2022, meals may not be claimed for the days you do not have an approved FSMC contract.

[Memo SFS-22-94](#)

Coming Soon: Additional Supply Chain Assistance Funds

Additional Supply Chain Assistance Funds announced by USDA

Funds will be distributed by state agencies to schools across the country, so they can purchase domestically grown foods for their meal programs.

This assistance builds on the \$1 billion in supply chain assistance funds USDA previously allocated in December 2021, which states can use this school year and next school year to provide schools with funding for commodity purchases, according to the release.

More information coming soon.

No Universal Free Meals in SY 2022-2023

The federal government allowed schools to offer free meals to all students during the pandemic, but Congress did not extend this benefit for next school year.

Families that are eligible for free or reduced-price meals must apply to receive them, and all other students must pay full price for their meals (unless a CEP school)

The school year begins on July 1. Schools can begin to accept application for free and reduced-price meals for SY 2022-2023 now.

Schools are encourage to provide frequent, easy to understand messages to families to encourage the completion of meal applications.

Coming Soon: Equipment Grant

The USDA has awarded Louisiana \$521,423 to be distributed to SFAs participating in the NSLP to purchase equipment

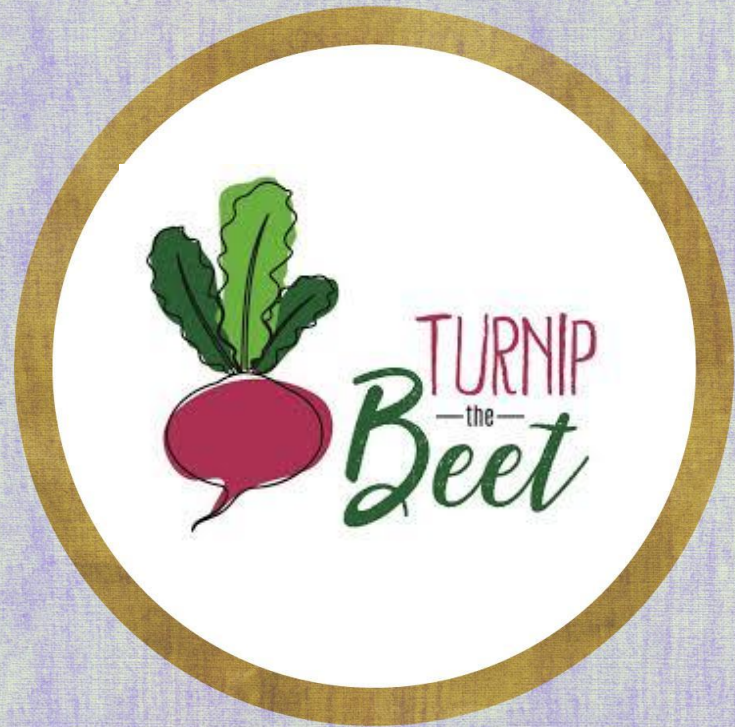
Schools approved for participation in the National School Lunch Program (NSLP) that participated in SSO/SFSP as part of COVID-19 flexibilities are eligible to apply for the grant opportunity.

Priority will be given to schools where the greatest percentage of enrolled students are eligible for free or reduced price meals.

The application period will tentatively open October 3, 2022 and close on November 4, 2022.

“Turnip the Beet” 2022

- Award presented by USDA that recognizes outstanding summer meal program sponsors.
- All summer meal program sponsors are eligible to apply
- To apply you must submit the [Turnip the Beet Nomination Form](#) and a [one month menu](#).
- For more information please refer to the [Louisiana Fit Kids](#) website.



State of Louisiana Small Purchase Thresholds

- On May 31, 2022, Governor John Bel Edwards signed House Bill 221 (Act 204) into law.
- Increases the micro-purchase threshold from \$10,000 to \$30,000 and the small purchase threshold from \$30,000 to \$60,000.
- Normal purchasing guidelines regarding quotes with small purchases still apply
- Effective date: **August 1, 2022**

[Memo SFS-22-x183](#)



School Nutrition Program Spotlight



CNP Assistant/Cafeteria Manager

Meet Wanda Deamer

Ms. Wanda Deamer has been employed by West Feliciana Parish School District for 26 years. Ms. Deamer has been in food services for more than 15 years as the Child Nutrition Program Assistant and a Cafeteria Manager. She loves feeding the children and it shows in her dedication and hard work each day. Ms. Wanda is a firm believer that every worker should follow all the policies and procedures for school food service. Thanks for going above and beyond for the students at West Feliciana Parish School District!!



louisianafitkids.com



School Nutrition Program Spotlight

Summer Meal Program Super Star Managers



- Help us spotlight the amazing people who help make summer meals in Louisiana happen!
- Do you have a manager you'd like to spotlight this summer? Let's celebrate him/her!
- Send Cathy Carmichael an email at catherine.carmichael@pbrc.edu or call 225-763-2799



louisianafitkids.com



You The YouTube logo, a red rounded rectangle with the word "Tube" in white.

Questions

Contact the
LDOE Division of Nutrition Support at
childnutritionprograms@la.gov or
225-342-9661

