



**Real-time Early Access to
Literacy
Fall 2021 Cycle
School Systems Webinar
August 18, 2021**

Agenda

- Program Overview
- REAL Changes
- Allocations and eGMS
- School Systems Role in REAL
- Student Registration Process
- Fall Cycle Timeline
- School Systems as Providers
- Resources



Program Overview



Louisiana Believes...



Children are our highest priority



Equity matters



Families are our partners



Choice expands opportunities



Educators are valued professionals



Schools are invaluable to communities



Graduates must be ready



Our future is bright

Louisiana's Goals and Priorities

SIX CRITICAL GOALS

Students enter kindergarten ready.

Students will achieve mastery on third-grade assessments and enter fourth grade prepared for grade-level content.

Students will achieve mastery on eighth-grade assessments and enter ninth grade prepared for grade-level content.

Students will graduate on time.

Students will graduate with a college and/or career credential.

Students will graduate eligible for a TOPS award.

EDUCATIONAL PRIORITIES

Ensure every student is on track to a professional career, college degree, or service.

Remove barriers and create equitable, inclusive learning experiences for all children.

Provide the highest quality teaching and learning environment.

Develop and retain a diverse, highly effective educator workforce.

Cultivate high-impact systems, structures, and partnerships

Importance of Early Literacy

The need to prioritize early literacy is significant.

- Early literacy is a critical predictor of educational and lifelong success.
- A long-term study found that students who were not proficient in reading by the end of third grade were four times more likely to dropout of high school than proficient readers. In fact, 88 percent of students who failed to earn a high school diploma were struggling readers in third grade (Annie E. Casey Foundation, 2010).
- Research shows that only 1 in 10 students who are behind in reading at the end of first grade will catch up to their peers later on. (Juel, 1988; Francis et al., 1996; Shaywitz et al., 1999)

The Coronavirus pandemic has exacerbated existing gaps in early literacy.

REAL Alignment to Louisiana Literacy Pillars



LOUISIANA'S LITERACY PILLARS



Student literacy outcomes will increase when schools create and monitor **literacy goals**.



Literacy outcomes will improve when students are provided high-quality core instruction together with **explicit literacy interventions and extensions** based on individual student needs.



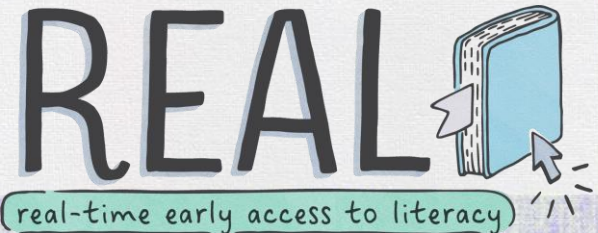
Ongoing professional growth is an essential component of effective teaching and literacy development.



Families play an essential role in the literacy development of children at all ages and stages.

Real-time Early Access to Literacy: Program Overview

- [Real-time Early Access to Literacy \(REAL\)](#) provides early literacy support for students in pre-K through grade 3.
- Through REAL, school systems are allocated funding to provide students in pre-K through grade 3 with technology and tutoring services.
- The REAL Program is funded by a federal grant, [Education Stabilization Fund Rethinking Education Models \(ESF-REM\)](#). The grant provides approximately \$17 million total to Louisiana over the course of three years to improve early literacy outcomes across the state.
- School systems receive funding to establish literacy tutoring microgrant accounts for eligible students.
- Tutoring for REAL participants is provided by LDOE approved [Tutoring Service Providers](#).



Breakdown of Tutoring Service Providers

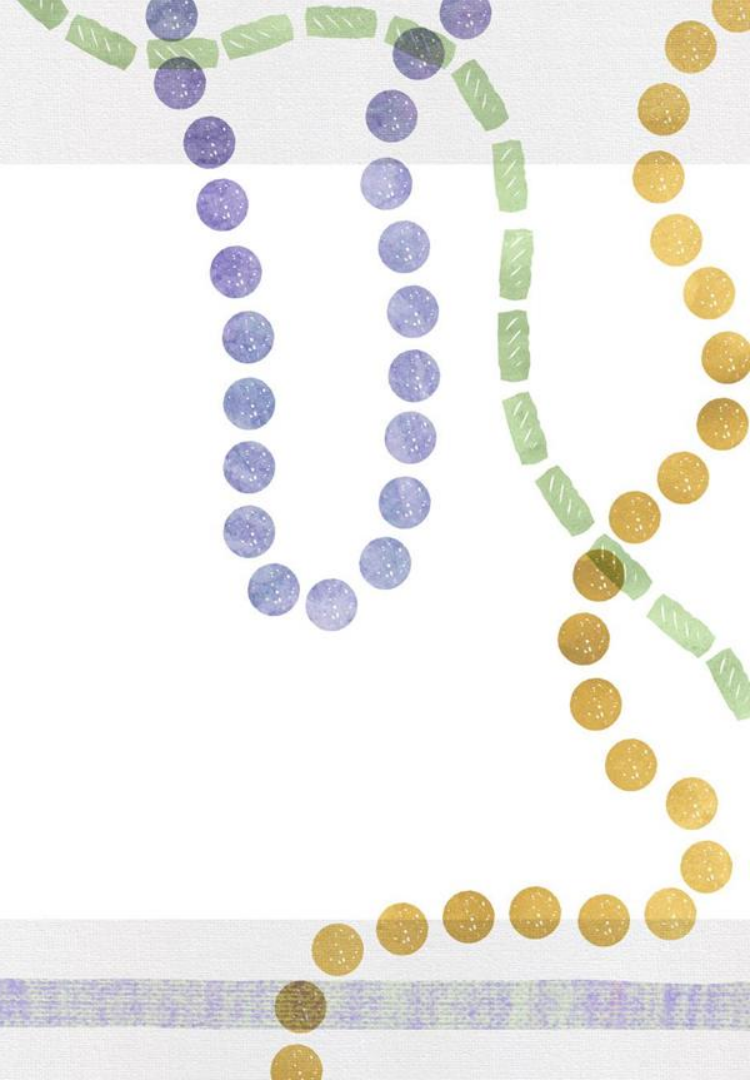
School System Providers	Private Company Providers
Ascension Parish School System	Canopy Ed- Minton Education Consulting
Calcasieu Parish School Board	Venture Education Services
Central Community Schools	MARK- Meaningful Autistic Resources for Kids
St. Bernard Parish School System	One on One Learning
East Feliciana School System	Smarty Pants Tutoring
Fannie C Williams Charter School	Sylvan Learning Acadiana
Jefferson Parish School System	Sylvan Learning Lake Charles
St. Landry School System	Sylvan Learning Metairie
St. Martin Parish School System	
Natchitoches Parish School System	

2021 School System Participants

- Acadia Parish
- Allen Parish
- Ascension Parish
- Assumption Parish
- Bossier Parish
- Calcasieu
- City of Monroe
- City of Bogalusa
- Central Community Schools
- Dalton Charter School
- East Carroll Parish
- Einstein Charter at Sherwood Forest
- Fannie C. Williams Charter
- East Feliciana Parish
- Jefferson Parish
- Lafayette Parish
- Lake Charles Charter Academy
- Morehouse Parish
- Ouachita Parish
- Red River Parish
- ReNew Dolores T. Aaron
- St. Landry Parish
- St. Bernard Parish
- St. Mary Parish
- St. Martin Parish
- St. Tammany Parish
- Southern University Lab
- Southwest LA Charter
- Tangipahoa Parish
- Terrebonne Parish
- Vermillion Parish



Where Does REAL Fit?



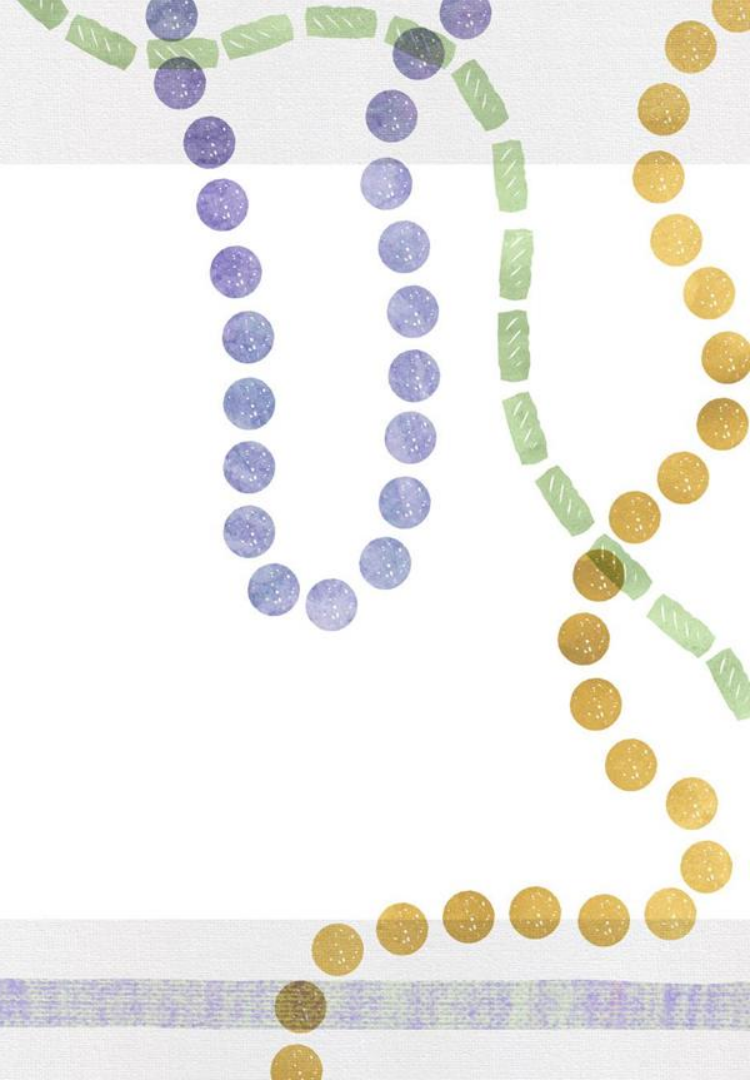
REAL Supports Your Current Initiatives



REAL should be used to support early literacy tutoring for pre-k through 3rd grade students in conjunction with all other current initiatives that support unfinished learning due to the Pandemic.

Think of ways to support your current early literacy work with REAL.

REAL Changes



REAL Changes

Experiences from the spring and summer cycles of REAL provided the opportunity to make adjustments to several processes that will improve program efficiency.

- **Application Name**
The eGMS application is labeled **REAL Consolidated**.
- **Group Size**
Face-to-face literacy tutoring group size can be up to 3 students. (Reimbursement for tutoring \$40 per hour 1:1, \$30 per hour 2:1 or \$27 per hour 3:1.)
- **Streamlined Registration Process**
The registration process will begin with the Tutoring Service Providers. This will eliminate the amount of wait time prior to beginning tutoring services.
- **REAL Portal**
School systems will finalize registration by entering student information into the REAL portal.

Allocations and E-Grants Management System (eGMS)



REAL Grant Application

*All school systems must create an application in eGMS.
The application will be labeled REAL Consolidated.*

- Once a school system agrees to the contacts and assurances, the application should appear on their homepage with the rest of the grants, under the section titled **available**.
- The school system will select the **create** button to start the application.
- All Real-time Early Access to Literacy grants should be complete in EGMS by **September 30**.

eGMS REAL Application Assurances and Contacts

To view your school system's allocation in the E-Grants Management system (eGMS) you must first complete the assurances and contact information in LEA Central Data.

Assurances

- Assurances
 - Formula Program Assurances
 - REAL Consolidated Assurances

Contacts

- Contact Information
 - Formula Contacts
 - REAL Consolidated

REAL Grant Application Non-Publics Tab

When completing the [non-publics](#) tab located within the grant application, numbers 1b and 2c must be 0.

1.		Number of Students
1.a	37,992	Public District Low Income Enrollment
		REAL Number of Students Private Scho
1.b	0	Enter the number of low income students e
1.c	37,992	Total Low Income Enrollment (1a + 1b calc
2.		REAL Allocation To Be Used for Professi
2.a	107,000	Amount available for public and private sch Total Current Year Funds Available for B
2.b	8,337	Reserved Indirect Cost amount Estimated Excluded Costs: <input type="text"/> IDC Rate 8.4509 Maximum
2.c	0	Reserved Administration Costs (for public Enter amount for Reserved Administrati

REAL Application Sample Budget Detail for School Systems who are not Providers

*The REAL grant has only object code 300 and EIC 13. All funds associated with the 2021-2022 REAL allocation can only be utilized for **tutoring services** with an LDOE approved vendor.*

Sample Expenditure Description and Itemization

- Tutoring Services from the LDOE approved list of Tutoring Service Providers for students in grades pre-K through grade 3.

Reimbursement Request

- Reimbursement request can be submitted as frequently as a school system wishes, but at least once per quarter.
- Periodic expense reports (PERs) must be submitted quarterly.
 - Standard dates for per submissions are 9/30, 12/31, and 6/30.
 - The last PER should be marked as Final.

REAL School System Provider Webinar

Several school systems served as providers during the 2020-2021 cycles of REAL.

The Department will host a REAL Tutoring Service Provider webinar on September 2 at 2:00 p.m. to discuss provider expectations for the Fall 2021 REAL cycle.

Webinar Date/Time: Thursday, September 2 at 2 p.m.

Webinar Link: <https://ldoe.zoom.us/j/99897677113?pwd=VldKTyswTUhKOGVFL0F5bkpxS0FsUT09>

Meeting ID: 998 9767 7113

Passcode: 892229

WAS RESCHEDULED DUE TO HURRICANE IDA.

School System Role in REAL



School System REAL Responsibilities

Complete the eGMS application for Real-time Early Access to Literacy.

Identify eligible students (pre-K through grade 3 students enrolled in CIR/UIR-A schools) and provide their families with registration information.

Complete registration of students by uploading the LASID numbers, grade level, and tutoring section id of registered students into the REAL portal.

Make payments to REAL Tutoring Service Providers for services provided. Ensure that providers complete all school system requirements for contract services and data sharing.

Request for reimbursement for tutoring services provided to eligible students in eGMS.

How to Prioritize Student Grants

There are several factors that school systems should take into consideration when making a decision about student grant amounts. School systems should begin by developing an overall strategy for implementation.

Considerations for school systems include:

- Number of weeks in the tutoring cycle;
- Per hour cost of a tutoring session;
- Number of students in the target population; and
- Frequency of tutoring sessions.
- Suggested grant amounts should be a minimum of \$500 per cycle.

For example, a school system with an allocation of \$10,000 could decide to provide about 20 students with a \$500 grant. Each student would receive about 12 hours of tutoring over the fall tutoring cycle.

Student Registration Process

1. Eligible families receive registration information from their school system.
2. Families choose from a library of qualified Tutoring Service Providers by completing a registration link for their preferred provider.
3. Providers submit interested students' registration submissions to the school system for eligibility verification.
4. School systems verify eligibility and finalize enrollment into the program by registering students into the REAL portal and designating (suggested \$500) microgrants per eligible student during each tutoring cycle.
5. Upon completion of the eligibility verification, the Tutoring Service Provider will contact the family to schedule tutoring sessions.

Portal Access Information

- The Real-time Early Access to Literacy registration portal can be accessed at <https://leads5.doe.louisiana.gov/real/>.
- Each school system should identify a person(s) responsible for student eligibility verification and enrollment. Users with the "district staff" role will have the ability to upload enrollments for all students in their district. Users with the "school counselor" role will only be able to upload enrollments for students at their specific school.
- Each school system should complete the [REAL Portal User Account request form](#) by September 1.
- School systems may utilize the REAL Student [Registration and Enrollment Guidance](#) document for instructions to register students.



Fall Cycle Timeline



REAL Fall Timeline

Timeframe	Next Steps	Description
September 8	Family Registration Flyers Available	Family registration materials will be available for school systems to distribute.
September 8 - September 22	School System Eligible Student Recruitment	Eligible Families will receive registration information from their school systems. Families will choose from a library of qualified Tutoring Service Providers (TSPs) and begin the registration process.
September 8 - September 22	Student Eligibility Verification and Student Enrollment	TSPs will provide school systems with student registration information. Schools systems will verify eligibility and complete enrollment in the REAL portal.
September 15 - September 30	Student Tutoring Sessions Scheduled	TSPs contact the families to schedule students in specific tutoring sessions.

REAL Fall Timeline (Continued)

Timeframe	Next Steps	Description
September 15- December 5	Tutoring Sessions Begin	Students begin individualized literacy tutoring with an LDOE-approved vendor.
October 25	Invoice for Services	TSPs will invoice school systems for tutoring services provided through October 22.
September 15- December 5	Pre/Post Literacy Assessment	TSPs will administer a pre/post literacy screener during each tutoring cycle. A screening reporting template will be provided.
December 10	Invoice for Services	TSPs will invoice school systems for tutoring services provided through December 5.

When are the Next Tutoring Cycles?

Fall 2021 (10 weeks)	Spring 2022 (11 weeks)
September 15 - December 5	January 31 - May 1
The State of Louisiana reserves the right to revise this schedule.	

Resources

- [REAL Landing Page](#)
- [Tutoring Service Provider Request for Applications](#)
- [Tutoring Service Provider Online Application](#)
- [REAL Tutoring Service Provider Vendor Guide](#)
- [REAL Portal Student Registration and Enrollment Guidance](#)

Questions?

Email markecia.barthelemy@la.gov.

