



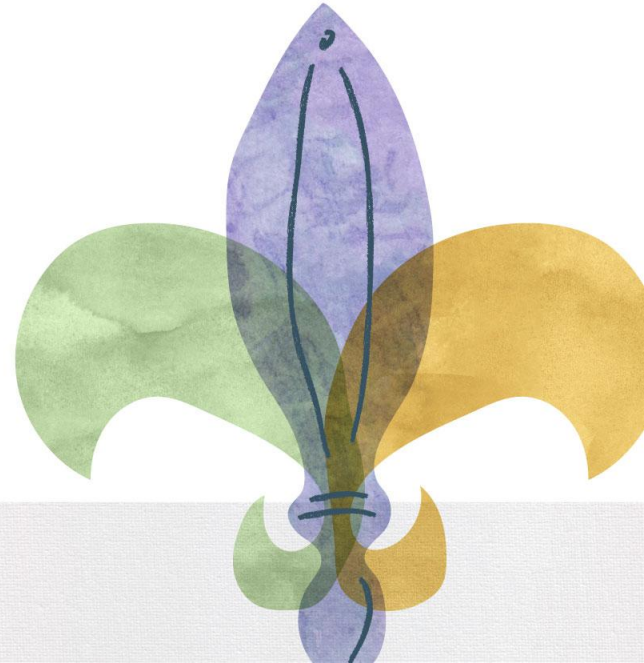
**Real-time Early Access to
Literacy
Summer 2021 Cycle
School Systems Webinar
May 6, 2021**

Agenda

- Program Overview
- REAL Success
- REAL Changes
- Allocations and eGMS
- School Systems Role in REAL
- Student Registration Process
- Summer Cycle Timeline
- School Systems as Providers
- Resources



Program Overview



Importance of Early Literacy

The need to prioritize early literacy is significant.

- Early literacy is a critical predictor of educational and lifelong success.
- A long-term study found that students who were not proficient in reading by the end of third grade were four times more likely to dropout of high school than proficient readers. In fact, 88 percent of students who failed to earn a high school diploma were struggling readers in third grade (Annie E. Casey Foundation, 2010).
- Research shows that only 1 in 10 students who are behind in reading at the end of first grade will catch up to their peers later on. (Juel, 1988; Francis et al., 1996; Shaywitz et al., 1999)

The Coronavirus pandemic has exacerbated existing gaps in early literacy.

Louisiana Believes...



Children are our highest priority



Equity matters



Families are our partners



Choice expands opportunities



Educators are valued professionals



Schools are invaluable to communities



Graduates must be ready



Our future is bright

Louisiana's Goals and Priorities

SIX CRITICAL GOALS

Students enter kindergarten ready.

Students will achieve mastery on third-grade assessments and enter fourth grade prepared for grade-level content.

Students will achieve mastery on eighth-grade assessments and enter ninth grade prepared for grade-level content.

Students will graduate on time.

Students will graduate with a college and/or career credential.

Students will graduate eligible for a TOPS award.

EDUCATIONAL PRIORITIES

Ensure every student is on track to a professional career, college degree, or service.

Remove barriers and create equitable, inclusive learning experiences for all children.

Provide the highest quality teaching and learning environment.

Develop and retain a diverse, highly effective educator workforce.

Cultivate high-impact systems, structures, and partnerships

REAL Alignment to Louisiana Literacy Pillars



LOUISIANA'S LITERACY PILLARS



Student literacy outcomes will increase when schools create and monitor **literacy goals**.



Literacy outcomes will improve when students are provided high-quality core instruction together with **explicit literacy interventions and extensions** based on individual student needs.



Ongoing professional growth is an essential component of effective teaching and literacy development.



Families play an essential role in the literacy development of children at all ages and stages.

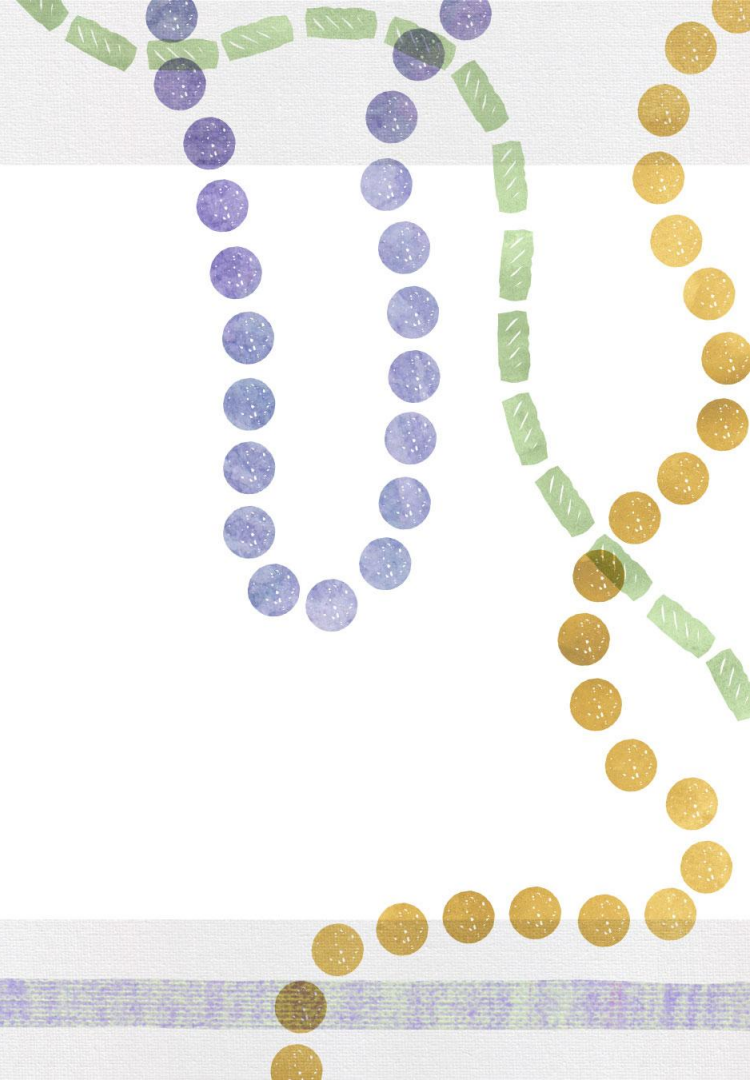


Real-time Early Access to Literacy: Program Overview

- [Real-time Early Access to Literacy \(REAL\)](#) provides early literacy support for students in pre-K through grade 3.
- Through REAL, school systems are allocated funding to provide students in pre-K through grade 3 with technology and tutoring services.
- The REAL Program is funded by a federal grant, [Education Stabilization Fund Rethinking Education Models \(ESF-REM\)](#). The grant provides approximately \$17 million total to Louisiana over the course of three years to improve early literacy outcomes across the state.
- School systems receive funding to establish literacy tutoring microgrant accounts for eligible students.
- Tutoring for REAL participants is provided by LDOE approved [Tutoring Service Providers](#).



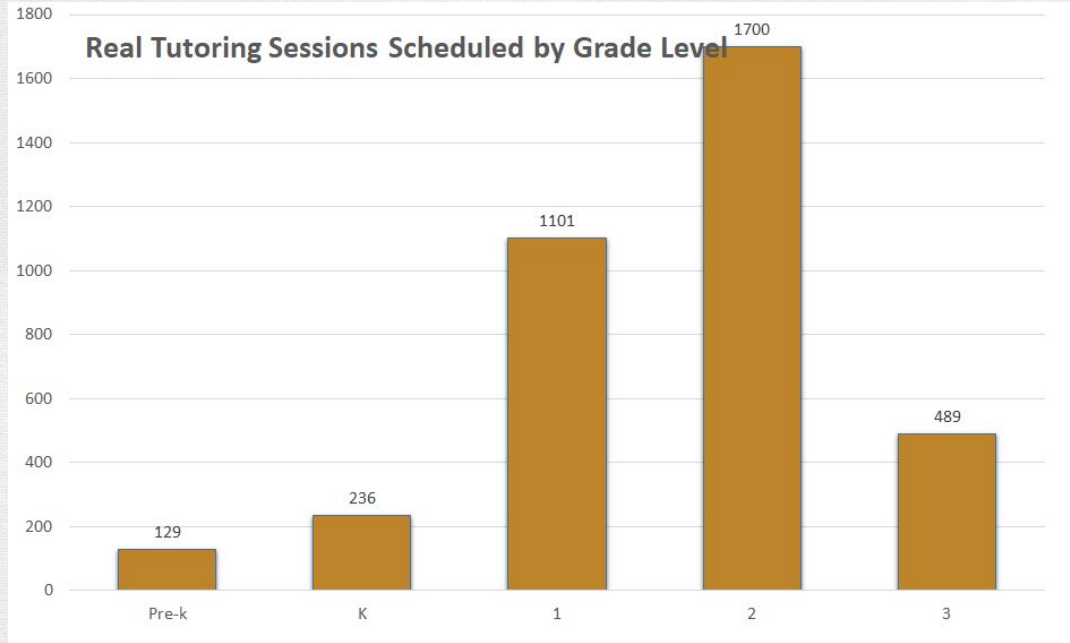
REAL Success!



REAL Tutoring Sessions Spring 2021

REAL Tutoring Service Providers scheduled 3,655 tutoring sessions for students across the state of Louisiana in the spring of 2020.

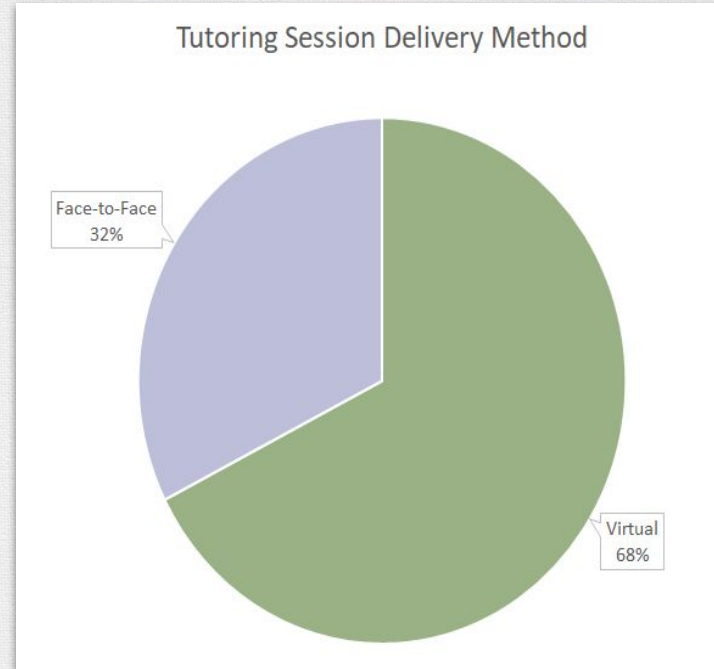
The primary focus of sessions provided were 1st and 2nd grade students.



REAL Tutoring Sessions Spring 2021 Session Delivery

Sessions were primarily delivered virtually during the spring of 2021.

- 2,446 delivered virtually
- 1,176 delivered face-to-face



Breakdown of Tutoring Service Providers

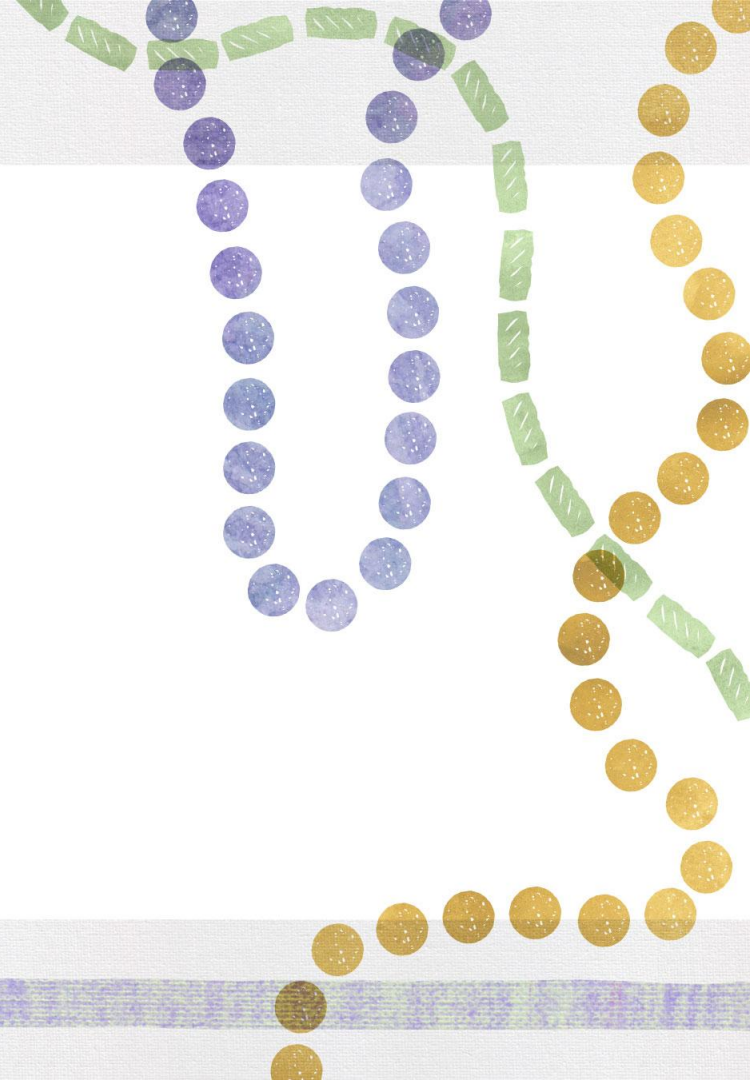
School System Providers	Private Company Providers
Ascension Parish School System	Canopy Ed- Minton Education Consulting
Central Community Schools	MARK- Meaningful Autistic Resources for Kids
St. Bernard Parish School System	One on One Learning
East Feliciana School System	Smarty Pants Tutoring
Fannie C Williams Charter School	Sylvan Learning Acadiana
Jefferson Parish School System	Sylvan Learning Lake Charles
St. Landry School System	Sylvan Learning Metairie
St. Martin Parish School System	Quest Testing Services

Spring 2021 School System Participants

- Acadia Parish
- Allen Parish
- Ascension Parish
- Assumption Parish
- Bossier Parish
- Calcasieu
- City of Monroe
- City of Bogalusa
- Central Community Schools
- Dalton Charter School
- East Carroll Parish
- Einstein Charter at Sherwood Forest
- Fannie C. Williams Charter
- East Feliciana Parish
- Jefferson Parish
- Lafayette Parish
- Lake Charles Charter Academy
- Morehouse Parish
- Ouachita Parish
- Red River Parish
- ReNew Dolores T. Aaron
- St. Landry Parish
- St. Bernard Parish
- St. Mary Parish
- St. Martin Parish
- St. Tammany Parish
- Southern University Lab
- Southwest LA Charter
- Tangipahoa Parish
- Terrebonne Parish
- Vermillion Parish



Where Does REAL Fit?



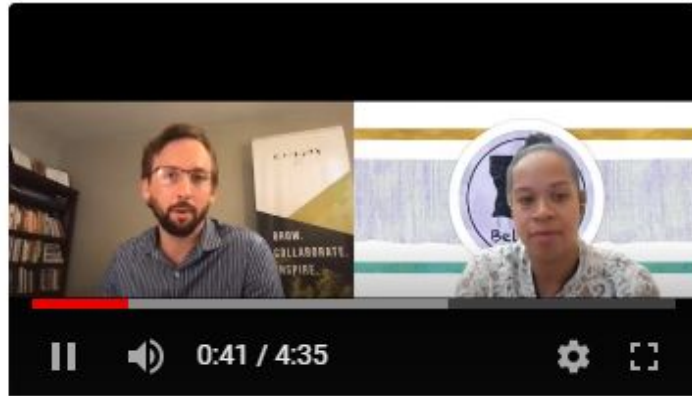
REAL Supports Your Current Initiatives



REAL should be used to support early literacy tutoring for pre-k through 3rd grade students in conjunction with all other current initiatives that support learning loss due to the Pandemic.

Think of ways to support your current early literacy work with REAL.

Provider Spotlight: Canopy Ed

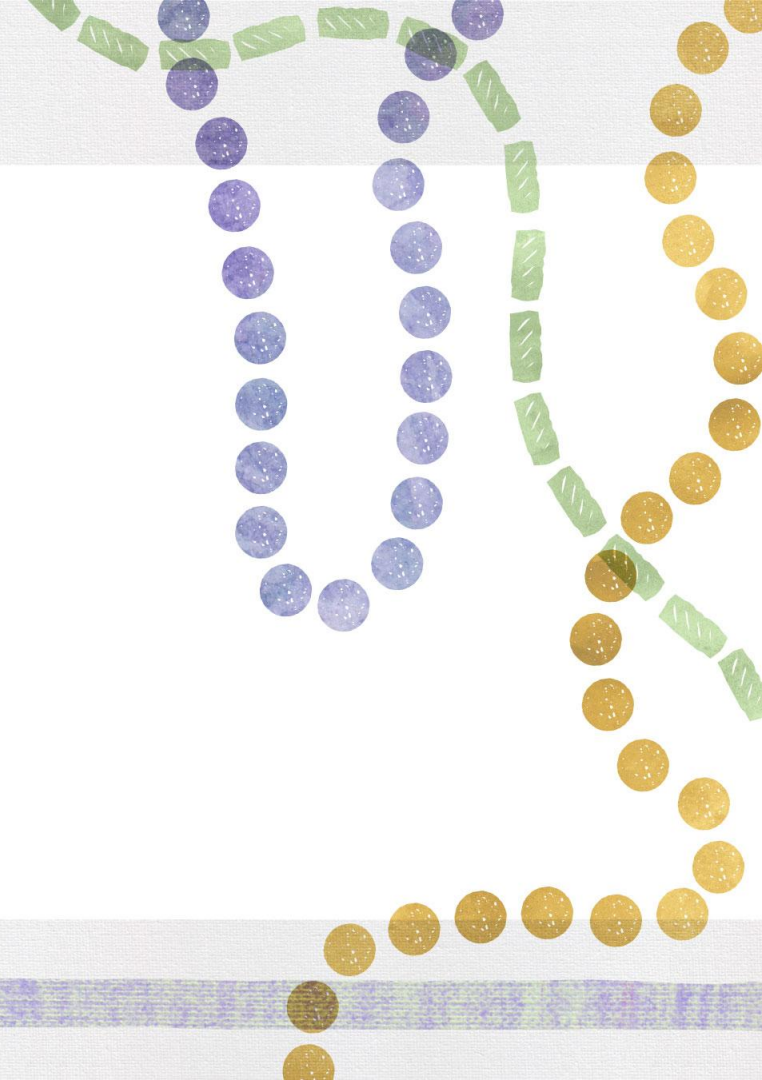


CANOPY
ED



- Scheduled 1,508 sessions during the spring session.
- Developed models to support school systems with implementation.
 - K- 156 sessions
 - 1- 539 sessions
 - 2- 466 sessions
 - 3- 344 sessions
- St. Tammany, Tangipahoa, Terrebonne, Vermillion, City of Bogalusa, City of Monroe, Dalton Charter, Einstein Charter, East Baton Rouge, Lafayette Parish, Lake Charles Charter, Madison, Ouachita, ReNew Charters, Southwest LA Charter

REAL Changes



REAL Changes

Experiences from the spring cycle of REAL provided the opportunity to make adjustments to several processes that will improve program efficiency.

- **Group Size**
Face-to-face literacy tutoring group size can be up to 3 students.
(Reimbursement for tutoring is \$40 per hour 1:1, \$30 per hour 2:1 or \$27 per hour 3:1.)
- **Streamlined Registration Process**
The registration process will begin with the Tutoring Service Providers. This will eliminate the amount of wait time prior to beginning tutoring services.
- **REAL Portal**
School systems will finalize registration by entering student information into the REAL portal.

Allocations and E-Grants Management System (eGMS)



REAL Grant Application

School systems who did not participate in REAL in the spring, must create their application in eGMS.

- Once a school system agrees to the contacts and assurances, the application should appear on their homepage with the rest of the grants, under the section titled **available**.
- The school system will select the **create** button to start the application.
- All Real-time Early Access to Literacy grants should be complete in EGMS by **May 21**.

eGMS REAL Application Assurances and Contacts

To view your school system's allocation in the E-Grants Management system (eGMS) you must first complete the assurances and contact information in LEA Central Data.

Assurances

- Assurances
 - Formula Program Assurances
 - Real-time Early Access to Literacy Assurances

Contacts

- Contact Information
 - Formula Contacts
 - Real-time Early Access to Literacy

REAL Grant Application Non-Publics Tab

December 2020 and April 2021 REAL allocations were made based on the number pre-K to grade 3 students enrolled in schools with the label CIR/UIR-A. Non-publics do not have this label.

When completing the [non-publics](#) tab located within the grant application, numbers 1b and 2c must be 0.

1.		Number of Students
1.a	<input type="text" value="37,992"/>	Public District Low Income Enrollment
		REAL Number of Students Private Schools
1.b	<input type="text" value="0"/>	Enter the number of low income students enrolled in private schools
1.c	<input type="text" value="37,992"/>	Total Low Income Enrollment (1a + 1b calculation)
2.		REAL Allocation To Be Used for Professional Salaries
2.a	<input type="text" value="107,000"/>	Amount available for public and private schools Total Current Year Funds Available for Budget
2.b	<input type="text" value="8,337"/>	Reserved Indirect Cost amount Estimated Excluded Costs: <input type="text"/>
		IDC Rate <input type="text" value="8.4509"/> Maximum
2.c	<input type="text" value="0"/>	Reserved Administration Costs (for public and private schools) Enter amount for Reserved Administration

REAL Application Sample Budget Detail for School Systems who are not Providers

*The REAL grant has only object code 300 and EIC 13. Funds associated with the April 2021 REAL allocation can only be utilized for **tutoring services** with an LDOE approved vendor.*

Sample Expenditure Description and Itemization

- Tutoring Services from the LDOE approved list of Tutoring Service Providers for students in grades pre-K through grade 3.

Summer Allocations and eGMS

Summer REAL Allocations have been loaded into eGMS. If your school system completed the application for the spring cycle, the summer allocations have been loaded into the same application.

Next steps for a school system who submitted the REAL application this spring include:

1. Develop a plan to prioritize early literacy tutoring for eligible pre-K through grade 3 students.
2. Complete an amendment in eGMS reflective of the additional funding by May 21.

REAL School System Providers

Eight schools systems served as providers during the spring cycle of REAL and we are excited to welcome several additional school systems onboard this summer.

The Department will host a REAL Tutoring Service Provider webinar on May 12 at to discuss provider expectations for the summer cycle.

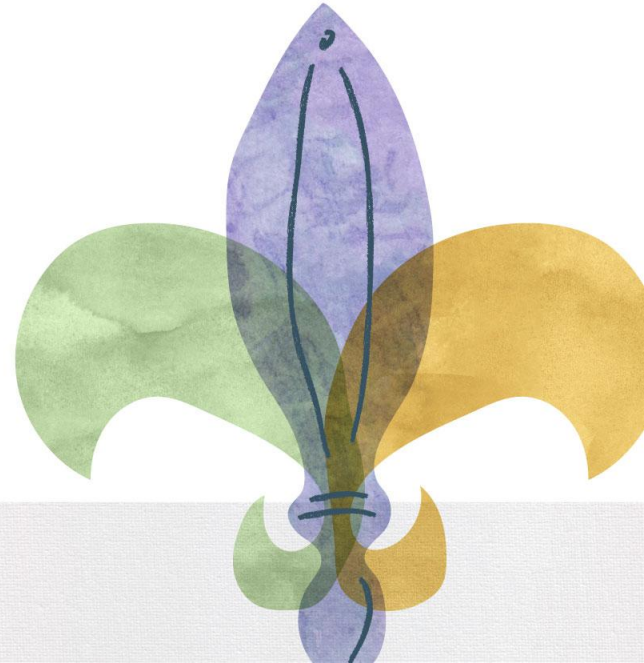
Webinar Date/Time: Wednesday, May 12 at 2 p.m.

Webinar Link: <https://ldoe.zoom.us/j/92908496737>

Meeting ID: 929 0849 6737

Passcode: 150275

School System Role in REAL



School System REAL Responsibilities

Complete the eGMS application for Real-time Early Access to Literacy.

Identify eligible students (pre-K through grade 3 students enrolled in CIR/UIR-A schools) and provide their families with registration information.

Complete registration of students by uploading the LASID numbers, grade level, and tutoring section id of registered students into the REAL portal.

Make payments to REAL Tutoring Service Providers for services provided. Ensure that providers complete all school system requirements for contract services and data sharing.

Request for reimbursement for tutoring services provided to eligible students in eGMS

How to Prioritize Student Grants

There are several factors that school systems should take into consideration when making a decision about student grant amounts. School systems should begin by developing an overall strategy for implementation.

Considerations for school systems include:

- Number of weeks in the tutoring cycle;
- Per hour cost of a tutoring session;
- Number of students in the target population; and
- Frequency of tutoring sessions.
- Suggested grant amounts for the summer cycle should be a minimum of \$500.

For example, a school system with an allocation of \$10,000 could decide to provide about 20 students with a \$500 grant. Each student would receive about 12 hours of tutoring over the 9 week tutoring cycle.

Student Registration Process

1. Eligible families receive registration information from their school system.
2. Families choose from a library of qualified Tutoring Service Providers by completing a registration link for their preferred provider.
3. Providers submit interested students' registration submissions to the school system for eligibility verification.
4. School systems verify eligibility and finalize enrollment into the program by registering students into the REAL portal and designating (suggested \$500) microgrants per eligible student during each tutoring cycle.
5. Upon completion of the eligibility verification, the Tutoring Service Provider will contact the family to schedule tutoring sessions.

Portal Access Information

- The Real-time Early Access to Literacy registration portal can be accessed at <https://leads5.doe.louisiana.gov/real/>.
- Each school system should identify a person(s) responsible for student eligibility verification and enrollment. Users with the "district staff" role will have the ability to upload enrollments for all students in their district. Users with the "school counselor" role will only be able to upload enrollments for students at their specific school.
- Each school system should complete the [REAL Portal User Account request form](#) by May 19.
- The REAL Student Registration and Enrollment Guidance document will be released May 12.



Summer Cycle Timeline



REAL Summer Timeline

Timeframe	Next Steps	Description
May 12	Family Registration Flyers Available	Family registration materials will be available for school systems to distribute family registration flyers.
May 13 - May 21	School System Eligible Student Recruitment	Eligible Families will receive registration information from their school systems. Families will choose from a library of qualified Tutoring Service Providers (TSPs) and begin the registration process.
May 13 - May 21	Student Eligibility Verification and Student Enrollment	TSPs will provide school systems with student registration information. Schools systems will verify eligibility and complete enrollment in the REAL portal.
May 17- May 21	Student Tutoring Sessions Scheduled	TSPs contact the families to schedule students in specific tutoring sessions.

REAL Summer Timeline (Continued)

Timeframe	Next Steps	Description
May 24-July 23	Tutoring Sessions Begin	Students begin individualized literacy tutoring with an LDOE-approved vendor.
June 30	Invoice for Services	TSPs will invoice school systems for tutoring services provided through June 27.
July 15	Initial PER Submission	School systems submit initial PER in eGMS for services provided through June 27.
May 24-July 23	Pre/Post Literacy Assessment	TSPs will administer a pre/post literacy screener during each tutoring cycle. A screening reporting template will be provided.
July 30	Invoice for Services	TSPs will invoice school systems for tutoring services provided through July 23.
August 15	Request Reimbursement and Submit Final PER	School systems will submit for reimbursement and submit final PER in eGMS no later than August 15.

When are the Next Tutoring Cycles?

Summer 2021 (9 weeks)	Fall 2021 (12 weeks)	Spring 2022 (12 weeks)
May 24 - July 23	September 6 - December 5	January 30 - April 30
The State of Louisiana reserves the right to revise this schedule.		

Resources

- [REAL Landing Page](#)
- [REAL School Systems Webinar 1/28](#)
- [REAL School Systems Webinar 2/11](#)
- [Tutoring Service Provider Request for Applications](#)
- [Tutoring Service Provider Online Application](#)
- [REAL Tutoring Service Provider Vendor Guide](#)
- REAL Portal Student Registration and Enrollment Guidance (*coming soon*)

REAL Teacher Leader Summit Sessions

May 25

- ECE431-a-R3: Real-time Early Access to Literacy (2:35 pm)

May 26

- ECE431-b-R5: Real-time Early Access to Literacy (8:00 am)
- ECE 431-c-R8: Real-time Early Access to Literacy (1:50 pm)



Questions?

Email catasha.edwards@la.gov

