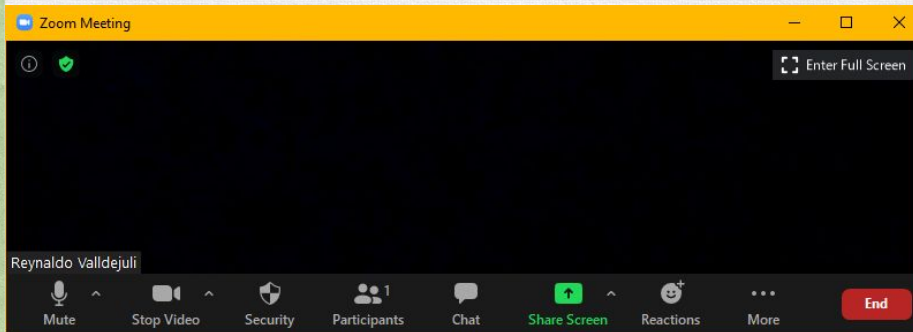


Zoom Meeting Preparation

- Please make sure your phone or computer is muted to minimize background noise.
 - To do this, hover over the bottom left-hand side of your screen and click “Mute.”
- Please make sure you have turned off your camera to save bandwidth and prevent any connectivity issues.
 - To do this, hover over the bottom left-hand side of your screen and click “Stop Video.”
- Please submit questions during the presentation in the “Chat” function located on the bottom of your screen.



NOTICE: In accordance with the Americans with Disabilities Act, if you need special assistance at this meeting please contact Idoecommunications@la.gov.

LOUISIANA DEPARTMENT OF EDUCATION



Teaching and Learning Monthly Call

October 26, 2022

Agenda

- I. [Accelerating Math Learning: Louisiana's Math Refresh](#)
- II. [Academic Content](#)
- III. [Diverse Learners](#)
- IV. [Literacy](#)
- V. [Educator Development](#)

Suggested participants for this call:

- Early Childhood Supervisors
- Chief Academic Officers/Curriculum Supervisors
- Literacy Coordinators
- Special Education Supervisors
- English Learner Supervisors
- Content and Mentor Leader Coordinators
- Talent Supervisors
- EdTech Directors and Coaches



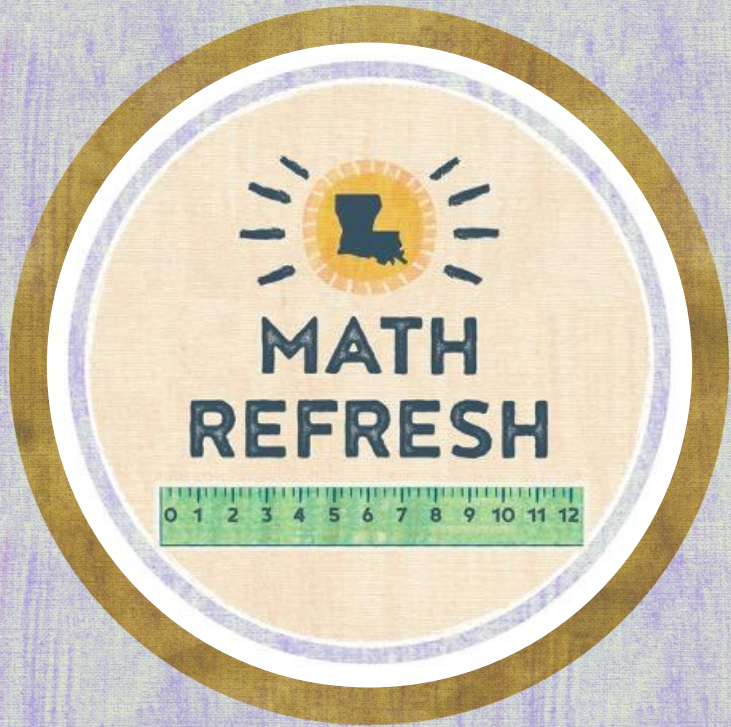
**Accelerating Math Learning:
Louisiana's Math Refresh**



Louisiana's Math Refresh

To support all schools in accelerating math learning, the **Louisiana Math Refresh** provides strategically focused support to teachers and school and system leaders in two key areas:

- funding to support a **refresh of math materials** to ensure resources used during any instructional time are of the same high level of quality as core instruction
- explicit guidance, resources, and professional learning to support a **refresh of existing instructional practices** to align with evidence-based approaches for maximum impact in accelerating students' math progress



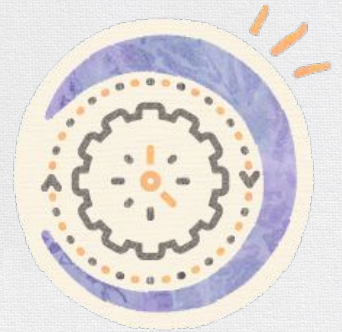
Accelerating Learning



Teachers have access to **high-impact structures and systems** to support their growth.



Teachers have access to **high-quality, aligned resources**.



Teachers are prepared to lead **highly-effective instruction in positive, inclusive environments** every day.

Accelerating Math Learning

more of this...	less of this...
<ul style="list-style-type: none">● emphasis on <i>forward movement</i>; unfinished math learning is systematically addressed just in time for new concepts● ensuring all students, including students with disabilities and English Learners, have daily access to high-quality, grade level learning alongside peers● math instruction across settings (e.g. tutoring, extended learning time) is connected to core instruction and of the same standard of quality, prioritizing individualized supports that ensure readiness to engage in grade level work	<ul style="list-style-type: none">● emphasis on <i>backward movement</i>, reteaching every “missing” skill or concept in isolation from grade level work● structuring extended learning time and interventions so that students miss sacred core ELA, math, science, or social studies instruction● instructional and intervention time is passive and isolated from core (e.g. focused on worksheets or computer-based fluency drills), and/or students are engaging with work that is better suited for earlier grades

Louisiana's Math Pillars



school structures
prioritize **all students'**
successful engagement
in **high-quality,**
grade-level core math
instruction alongside
peers



timely, proactive
interventions
connecting
prerequisite learning to
upcoming and current
grade-level work



ongoing
professional
learning and
proactive planning
are essential for
effective teaching
and accelerating



families, caregivers
and communities
play an essential
role at all ages and
stages

Statewide Zearn Access for Louisiana Schools K-8

The Department has partnered with Zearn to provide [Zearn School Accounts](#) to all public schools serving grades K-8. This opportunity will support systems' efforts to accelerate math learning and will include the following:

- **high-quality, evidence-based resources**
- **aligned professional learning**

Key actions

- Expect a survey in early November for system leads to begin the rostering process.
- Have teachers [register](#) for professional learning. Sessions are available from November through January.
- Plan for implementation to begin in January.
- Plan to attend leader training in January or February.



DO NOW

Math Refresh Launch Webinars for Educators

In partnership with Zearn, the Department is excited to offer webinars for Louisiana teachers to explore acceleration supports to help all kids access grade-level math learning.

Webinar	Registration link
Learning Acceleration for Math Grades K-2	<u>November 1 at 4 p.m.</u>
Learning Acceleration for Math Grades 3-5	<u>November 2 at 4 p.m.</u>
Learning Acceleration for Math Grades 6-8	<u>November 3 at 4 p.m.</u>

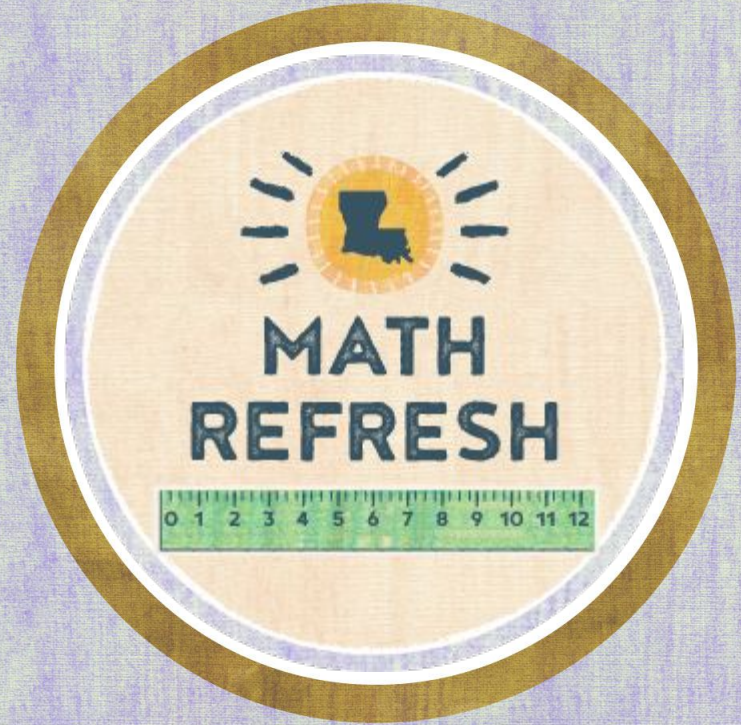


Louisiana's Math Refresh: Support Overview

Key Event	Timeline
<u>Math Refresh Library</u>	resources added on a rolling basis
LDOE professional learning (PL) and individualized assistance	ongoing
Math Refresh funding opportunity guidance and resources released with 2023-2024 School System Planning	October 2022- February 2023
statewide <u>Zearn access for grades K-8</u> with aligned professional learning (PL) support	November: teacher webinars, rostering and virtual teacher PL begins January 2023: school account access begins, regional PL for leaders
<u>Eureka Math² Algebra I Pilot Opportunity</u> with aligned professional learning (PL) support	November: potential pilot schools notified, PL begins January 2023: pilot implementation starts

Contact Information

Please contact STEM@la.gov with any questions or to request an individualized call to support your implementation planning efforts.





Academic Content



Instructional Materials Review Updates

Recently Published Tier I Materials

The Department conducts ongoing reviews of curricular materials to support school systems in adopting curricula in all core subjects. Newly rated Tier 1 curricula is listed below. All reviewed curricula can be found on the [Tiered Reviews](#) webpage.

Publisher	Title and Grade Levels	Core Subject	Tier
Savvas Learning Company LLC	enVision Math, Gr K-2	Math	Tier 1
The College Board	Springboard ELA, Gr 6, English III - IV	ELA	Tier 1

State Reviews Reports

- [Weekly Report](#): provides submission progress for all current reviews
- [Comprehensive Tiered Report](#): cumulative list of materials reviewed and tiered



IMR - Tier 1 Reviews Archiving 12/31/22

Several ECE, ELA, Math, and Social Studies reviews will **archive in December**. School systems should consider the archive dates when **selecting curricula for next school year**.

The [Archive Dates for all Tier 1 & 2 Reviews](#) is located on the Tiered Reviews webpage and indicates whether the publisher has submitted updated materials for review.



Official Archive Date	Tier	Subj/Grade Band	Publisher	Submission
12/31/22	Tier 1	ECE	Abrams Learning Trends/Frog Street	DIG Devel
12/31/22	Tier 1	ECE	Frog Street Press	Frog Street
12/31/22	Tier 1	ECE	Frog Street Press	Frog, Infar
12/31/22	Tier 1	ECE	Kaplan Early Learning Company	Learn Ever
12/31/22	Tier 1	ECE	Pearson Education	Opening th
12/31/22	Tier 1	ECE	Teaching Strategies, LLC	The Creati
12/31/22	Tier 1	ECE	Teaching Strategies, LLC	The Creati
12/31/22	Tier 1	ECE	Voyager Sopris Learning, Inc.	We Can E
12/31/22	Tier 1	ELA 6-12	TE21, A Certica Solutions Company	CASE ELA
12/31/22	Tier 1	ELA 6-12	TE21, Inc.	CASE Ben
12/31/22	Tier 1	ELA K-5	Core Knowledge	Core Know
12/31/22	Tier 1	ELA K-5	Core Knowledge	Core Know
12/31/22	Tier 1	Math 6-12	Great Minds	Eureka Ma
12/31/22	Tier 1	Math 6-12	Great Minds	Eureka Ma
12/31/22	Tier 1	Math K-5	Great Minds	Eureka Ma
12/31/22	Tier 1	Math K-5	Zearn, Inc.	Zearn Mat
12/31/22	Tier 1	Social Studies	The Gilder Lehman Institute of American History	Teaching v
12/31/22	Tier 2	ECE	Amplify Education	Core Know
12/31/22	Tier 2	ECE	HighScope Educational Research Foundation	Tender Ca
12/31/22	Tier 2	ECE	Success for All Foundation	Curiosity C

IMR: Act 517 Compliance Reviews

The LDOE reached out to publishers with posted Tier 1 or Tier 2 state reviews that include foundational skills and requested access to their instructional materials to examine for the following changes in alignment resulting from [Act 517](#):

- Instructional materials and embedded assessments do not require or encourage the three-cueing system model of reading in reading instruction;
- Instructional materials and embedded assessments do not require or encourage visual memory as the primary basis for word recognition; and/or
- Instructional materials and embedded assessments do not require or encourage MSV cues in reading instruction.



DO NOW

IMR: Act 517 Compliance Reviews

Access to the following materials was not provided by the publisher. The titles **have not been reviewed** for compliance under [Act 517](#), and, therefore, have been removed from the [Tiered Reviews](#) webpage and added to the [Not Reviewed for Compliance Under Act 517](#) report. The LDOE recommends that district curriculum staff, principals, and teachers take this information into consideration when selecting and using instructional materials.

NOT REVIEWED FOR COMPLIANCE UNDER ACT 517				
Review Cycle	Content Area	Publisher	Title	Archive Date
2017-2018	ELA	American Reading Company, Inc.	ARC Core, Grades K-2	12/31/2024
2016-2017	ELA	American Reading Company, Inc.	IRLA Foundational Skills Toolkit, Grades K-2 (FS Only)	12/31/2022
2019-2020	ELA	Pearson Online Blended Learning	Language Arts 1 A/B, Gr 1	12/31/2026

Please contact louisianacurriculumreview@la.gov with questions.



Teacher Leader Advisor (TLA) Applications Expanded

[TLA applications](#) are currently being accepted for STEM and EdTech until **November 7**.

STEM and EdTech Teacher Leader Advisors will

- create tools and resources to support STEM experiences and educational technology engagement across multiple settings; and
- lead professional development sessions on best practices and approach within STEM and digital learning.

More information can be found on the [TLA flyer](#).

Please contact classroomsupporttoolbox@la.gov with questions.



DO NOW

Social Studies Assessment Item Review Committees

The Division of Assessment Content will convene item review committees for the new LEAP Social Studies Assessments in grades 3–8 and high school Civics in January–March. Each committee will

- include educators, mainly classroom teachers and instructional leads with extensive content knowledge and grade-level expertise; and
- review items to ensure that they are aligned, accurate, clear, and fair.

Interested educators can access the [Assessment Content Educator Review Committees document](#) for committee details and links to apply. **The deadline to complete the interest surveys is November 20.**

Please contact assessment@la.gov with questions.

Academic Content Contacts

For questions about...	Contact...
ELA Guidebooks	elaguidebooks@la.gov
math, science, and STEM	STEM@la.gov
environmental education	environmentaleducation@la.gov
All other curriculum and instruction	classroomsupporttoolbox@la.gov
Textbooks and instructional materials review, tiered reviews, vendors, and PD vendor guide	louisianacurriculumreview@la.gov
Teacher Leader Advisors	classroomsupporttoolbox@la.gov
World language/immersion	language.acquisition@la.gov
Educational Technology/Digital Learning	digitallearning@la.gov



Diverse Learners Supports



Dyslexia Awareness Month

Each year, October is recognized as Dyslexia Awareness Month. Early intervention for children with dyslexia is key! Awareness is aimed at emphasizing the intelligence and abilities of children with dyslexia and the supports to help them succeed.

The Department released updated [dyslexia guidance](#) one year ago and recently released a [checklist](#) that school systems can utilize as a resource in addition to other approved screeners and tools.

Additional resources are available on our [academic library](#).

Please contact diverselearnersupport@la.gov with questions.



DO NOW

SPED Camera Policy Submission

R.S. 17:1948 requires school systems to submit their approved policy for the installation and operation of cameras in certain classrooms to the Department by December 31 or within 60 days of receipt of funding. Since funding has been released to school systems, the Department released a [submission form](#) for LEAs to submit their policy by November 30.

Please contact specialeducation@la.gov with questions.

New K-2 Alternate Assessment Eligibility Criteria

Eligibility criteria for participation in the alternate assessment are found in Bulletin 1530, *Louisiana IEP Handbook for Students with Exceptionalities*. BESE recently approved [new K-2 eligibility criteria for participation in alternate assessments](#). **This year, the new criteria should only be considered for English Learners with significant cognitive disabilities who will take ELPT Connect in grades K-2.**

The IEP Team Decision-Making Tool for K-2 will be released in the [Significant Cognitive Disabilities library](#). Stay tuned for an announcement of regional training opportunities in late November.

IEPs for students participating in the alternate assessment must be submitted to SER **30 days prior to the [testing window](#).**



Notice of Intent for Alternate Assessment Participation Waiver

The Department intends to seek a [waiver extension](#) for the 2022-2023 school year of the federal requirement to limit the number of students assessed on alternate assessments to 1.0 percent.

Public comments may be submitted via email at specialeducation@la.gov by October 31. Please include your full name, school system, and contact information. All comments are subject to public records requests.



Save the Date: SPED Leader Collaborative

Who: SPED Directors

What: Join the Diverse Learners team for a day of special education updates, professional development and collaboration.

When: December 6, 9 a.m. - 2 p.m.

Where: River Branch Library, 250 North Boulevard, Baton Rouge, LA 70802



Survey of Educators Supporting Students with Significant Disabilities

The Department is reaching out to teachers of students with significant cognitive disabilities to complete the following survey, in an effort to gauge support needs:

[Survey: Teachers of Students with Significant Cognitive Disabilities \(SWSCD\)](#)

Diverse Learner Contacts

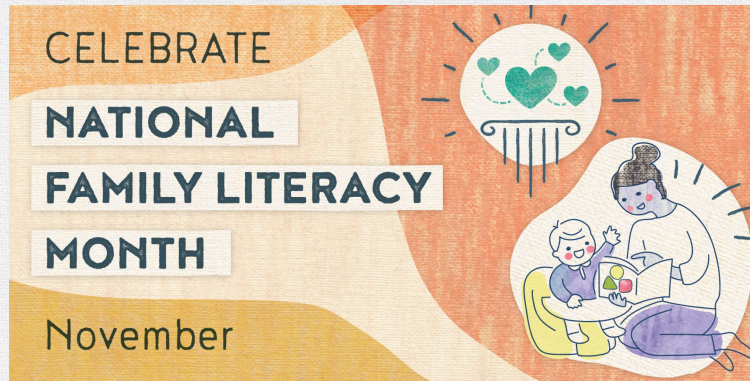
For questions about...	Contact...
English Learners	
English Learner instructional support and content	diverselearnersupport@la.gov
English Learner compliance, federal funding, programming	alice.garcia@la.gov
Students with Disabilities	
Special Education policy, data, reporting	specialeducation@la.gov
Special Education instructional support and programming	diverselearnersupport@la.gov

Literacy



Family Literacy Engagement

- November is National Family Literacy Month!
- To celebrate, the Department will be highlighting family activities throughout the month.
- If you have events or activities to share, please email us.



Family Literacy Engagement

- There are resources available to schools and families every day in the [Families](#) section of the Literacy Library.
 - [Family Literacy Engagement Strategic Plan for School and Systems](#)
 - Grab & Go activities
 - Building Literacy Skills at Home (by age level)
- Family resources are translated into the top languages spoken in Louisiana schools.

Please contact louisianaliteracy@la.gov with questions.

New Resources: FIRE Unit 2

The second units of Foundational Instruction for Reading Excellence (FIRE) lessons for grades 3-5 have been posted in the [Literacy Library](#). FIRE is an instructional resource designed to support teachers in providing students advanced reading foundational skills in grades 3-5.

- [Grade 3 Unit 2 - Teacher's Guide](#)
- [Grade 3 Unit 2 - Student Activity Book](#)
- [Grade 4 Unit 2 - Teacher's Guide](#)
- [Grade 4 Unit 2 - Student Activity Book](#)
- [Grade 5 Unit 2 - Teacher's Guide](#)
- [Grade 5 Unit 2 - Student Activity Book](#)

New Resources: Content Literacy Support

The Content Literacy Support documents provide guidance for teachers in all content areas with ways to naturally incorporate best practices that support content acquisition and literacy skills. Five new support documents have been added to the growing library of resources. These documents can be found in the [Literacy Library](#) under Instruction, Intervention, and Extensions.

- [Creating a Claim](#)
- [Direct and Explicit Vocabulary Instruction](#)
- [Reading and Writing for a Purpose](#)
- [Summary Writing to Develop Comprehension](#)
- [Writing Frames](#)

Please contact louisianaliteracy@la.gov with questions.



Educator Development



Teacher Leader Lagniappe: New Episode Release

LDOE's podcast, [Teacher Leader Lagniappe](#) provides *a little something extra* for educators to stay inspired, motivated, and connected in the work with students.

Season 2, Episode 7: Be Better Than Yesterday with Dr. David Schexnaydre, Louisiana's 2023 State Principal of the Year

Season 2, Episode 8: Building Relationships with Louisiana's New Teacher of the Year Jordyn Vicknair

Educators can [submit pictures and stories](#) of the great work happening in their system to be highlighted on the podcast. Subscribe through [Apple](#) Podcasts, Google Play, [Spotify](#), or other apps.

Please contact em.cooper@la.gov with questions.



TEACHER
LEADER
lagniappe

DEPARTMENT OF
EDUCATION
Louisiana Believes



Recruitment, Recovery, and Retention Teacher Survey

The Department, in conjunction with the Region 14 Comprehensive Center, an outside organization that is a partner with the LDOE in improving education in our state, is providing the opportunity for **teachers** to describe their experiences and perceptions as well as offer suggestions on issues related to teacher recruitment, recovery, and retention.

Teachers are asked to complete this short [survey](#) by **November 11**.

Please contact louisianaleaders@la.gov with questions.

New Teacher Experience: Affinity Groups

The Department has partnered with Louisiana Tech University to create collaboration opportunities for new teachers by establishing Affinity Groups that new teachers may join virtually.

The Department is looking for outstanding educators to lead these virtual sessions. The Affinity Group Leader (AGL) job description and application will be released on **November 1**.

AGLs will be required to attend an in person training on December 1 and lead nine virtual sessions with up to twenty participants. They will be compensated \$2,500 for their work.

For more information contact laurie.carlton@la.gov.

New Teacher Experience: Professional Development Module

The first professional development module, Classroom Management and Classroom Environment, will be released in early November. The in person follow up session will be offered three times in December at the following locations and dates:

Date	City
Friday, December 2	Alexandria
Friday, December 9	Baton Rouge
Saturday, December 10	Ruston

For more information contact laurie.carlton@la.gov.

Compass Information System (CIS) Update

The deadline to finalize 2021-2022 teacher evaluations has been extended to November 4. Following this date, no additional data can be entered or adjusted.

CIS will roll to the 2022-2023 school year on November 7. Following the roll-over, rosters may be updated for this school year and observations and SLTs for the 2022-2023 school year can be entered.

Note: Leader evaluations for 2021-2022 will be due this winter, following the release of SPS scores.

Please contact compass@la.gov with questions.

Student Learning Target (SLT) Planning Resources

There are resources available in the [Compass Library](#) to assist in developing meaningful student learning targets.

- The [Student Learning Target Assessment Identification Guide](#) outlines approved assessments for gathering baseline information and progress monitoring.
- The [Student Learning Target Reflection Tool](#) provides an outline to guide the SLT process.
- The [Teacher SLT Guidance and Sample Templates](#) outlines the types of targets and process for setting targets and provides sample templates.
- The [Student Learning Target FAQ](#) document provides answers to common questions pertaining to student learning targets.

Please contact compass@la.gov with questions.

Student Learning Target Legislation/Policy Update

[Bulletin 130](#) requires a meeting between evaluator and evaluatee to discuss student learning targets. If no meeting takes place, the student learning targets shall not be used in evaluation. The following steps have been taken to assist in communicating the policy and ensuring the meeting takes place:

- Announcements have been made about the policy change in newsletters and on system calls.
- The policy information was added to the [CIS Timeline](#).
- [Sample SLT templates](#) have a space for evaluator and evaluatee signature.
- The [Student Learning Targets Frequently Asked Questions](#) document outlines the policy.
- The Compass Information System (CIS) will have a reminder on the submission screen.

Please contact compass@la.gov with questions.

Observation Resources

Per [Bulletin 130](#), two observations/site visits are required for all teachers and leaders for the 2022-2023 school year. The following resources are available in the Compass Library to assist with conducting and scoring observations:

- [Compass Teacher Rubric](#)
- [Compass Leader Rubric](#)
- [Converting CLASS[®] to Compass Equivalent](#)
- [Converting NIET SKR to Compass Equivalent](#)

Note: One of the observations may be waived for teachers who have earned a rating of highly effective according to the value-added model in the previous year.

Please contact compass@la.gov with questions.

October Program Approvals

The following programs were approved during the October BESE session:

Initial Teacher Preparation Provider

- Tulane University- Undergraduate pathway
- Tulane University- Post-Baccalaureate, MAT pathway

Early Childhood Ancillary Certification

- At the Heart
- Career Training Group

Please contact emily.smiley@la.gov with questions.



Call Summary



LDOE Contact List

So that we can best collaborate with your various teams, please ensure you and your colleagues update your school system contact information in the LDOE Contact List:

<https://form.jotform.com/LDOE/ldoe-contact-list>.

The following additional roles have been recently added:

- IT/Technology Director
- Educational Technology Director
- Educational Technology Coach

Contact classroomsupporttoolbox@la.gov with questions.



LDOE Contact List

Who is submitting this contact?

First Name

Last Name

What's the email address of the person submitting this request?

example@example.com

My School System is: *

- I need to: *
- Create a new contact
 - Update an existing contact
 - Delete a contact

For my LEA I am the/a (select all that apply): *

- 504 Coordinator

Key Deadlines & Action Steps

November	<ul style="list-style-type: none">● November 1-4: Summit Extensions● November 1: Math Refresh Launch Webinar with Zearn (K-2)● November 2: Math Refresh Launch Webinar with Zearn (3-5)● November 3: Math Refresh Launch Webinar with Zearn (6-8)● November 4: Deadline to finalize 2021-2022 CIS teacher evaluations● November 7: Deadline to apply for STEM and EdTech Teacher Leader Advisor positions● November 11: Deadline to submit Recruitment, Recovery, and Retention Teacher Survey● November 19: Deadline to register for 2022 LACUE Conference● November 20: Deadline to complete Social Studies Assessment Content Educator Review Committees survey● November 28 - January 25: Zearn Professional Learning (virtual) for teachers and tutors (pre-registration required)● November 30: Deadline to complete SPED Camera Policy Submission Form
December	<ul style="list-style-type: none">● December 2, 9, 10: New Teacher Experience follow up sessions
January 2023	<ul style="list-style-type: none">● January 9: Finalize all leader evaluations for 2021-2022● January 25: Final Zearn Professional Learning (virtual) for teachers and tutors (pre-registration required)
February 2023	<ul style="list-style-type: none">● February 6: Deadline to nominate grade 7-12 STEM teachers for the Presidential Award for Excellence in Mathematics and Science Teaching

Upcoming Webinars & Calls

Month	Date, Time, Title and Zoom Link
October	<ul style="list-style-type: none">• October 31, 1 p.m.: Principal Webinar Series: Diverse Learners
November	<ul style="list-style-type: none">• November 1, 4 p.m.: Learning Acceleration for Math Grades K-2• November 2, 4 p.m.: Learning Acceleration for Math Grades 3-5• November 3, 4 p.m.: Learning Acceleration for Math Grades 6-8• November 28, 1 p.m.: Principal Webinar Series: Literacy

Support & Resources

- [School System Support Calendar](#)
- [ELA Guidebooks 3-5 \(2022\) Pilot Feedback Report](#)
- [Google Sheets Updates to Save Time](#) includes information on three Sheets features, along with additional tutorials
- [IMR Weekly Report](#)
- [Comprehensive Tiered Report](#)
- [Archived Tiered State Reviews](#)
- [Archive Dates for Tier 1 & 2 Reviews](#)



Reminders & Repeats



Praxis Core Updates

Last fall, the Teacher Recruitment, Recovery, and Retention Task Force studied the barrier of Praxis Core on recruiting teachers into the profession. As a result of the study, the Task Force unanimously endorsed a proposal to remove the requirement of a core academic skills assessment (e.g. Praxis Core, ACT, SAT) from entry into a teacher preparation program and for initial licensure.

Acts [707](#) and [244](#) of the 2022 Regular Legislative Session were passed removing the requirement of of a core academic skills assessment (e.g. Praxis Core, ACT, SAT) as a requirement for entering the profession and for teacher licensure.

BESE recently approved the removal of the requirement of of a core academic skills assessment (e.g. Praxis Core) for both entrance into a Teacher Preparation Program and for licensure at today's meeting. All other requirements (Praxis II, GPA, etc.) remain the same.

Please contact em.cooper@la.gov with questions.

2022-2023 Mentor and Resident Compensation

- During the most recent legislative session, funding for Mentor teachers was approved as part of the MFP budget.
- Mentors will now receive \$2,000. Year-long undergraduate residents will receive \$3,300.
- Mentors of both yearlong undergraduate residents and post-baccalaureate residents (first year PLs) will receive funding this year.
- School systems receive this funding in their MFP and are responsible for paying residents and Mentors.
- If systems did not attend the Mentor funding webinar to learn more about the data collection process, the deck can be accessed in the [Mentor Library](#).

Please contact believeandprepare@la.gov with questions.



The [Louisiana Pre-Educator Pathway](#) is a Grow Your Own initiative focused on high quality early career development for the next generation of Louisiana's educators. In the 2022-2023 school year, a series of supports will be offered to support Louisiana school systems in the development, implementation, and expansion of the Louisiana Pre-Educator Pathway.

- [Pre-Educator Pathway Resource Library](#)
- [System Lead Professional Learning Community](#)
- [Grow Your Own Program Best Practices Office Hours](#)
- Grow Your Own Learning Visits
- Curriculum Training

Details and reminders about all supports will be shared through the [Pre-Educator Pathway Contact List](#).

Please contact believeandprepare@la.gov with questions.

Student Learning Target (SLT) Legislation/Policy Update

During the 2022 legislative session, [Act 333](#) was passed requiring a meeting between the evaluator and evaluatee to discuss student learning targets for each student.

Pending BESE approval, evaluators and evaluatees shall meet to discuss student learning targets, and student learning targets not discussed in a meeting between a person and his evaluator shall not be used in the person's evaluation.

Please contact compass@la.gov with questions.

Continuous Learning

Continuous learning should be provided to limit unfinished learning while maintaining access to instructional programming during modified operations. In accordance with BESE policy, school systems shall have a continuous learning plan for extended school closures reviewed by stakeholders and posted to the LEA website no later than June 30, 2023, and annually updated by June 30 of each year.

To prepare for this school year, the Department has released a [Continuous Learning Toolkit](#) to support system leaders in developing a continuous learning plan for when school closures may occur that require modified operations on a short-, medium-, or long-term basis. School systems should keep continuous learning plans at the system level and update annually.

Please contact keisha.thomas2@la.gov with questions.



K-12 Computer Science Education Engagement Opportunity

The Department is currently seeking feedback to inform the work within computer science education in our state.

Educators can be involved by completing an [interest form](#) to join future feedback discussions or by completing a [short survey](#).

The information gathered will be used to inform:

- the creation of STEM resources and tools for K-12 educators;
- professional learning needs for future work; and
- support schools and systems to broaden STEM education.

Please contact STEM@la.gov with questions.



2022 LACUE Conference

The Louisiana Association of Computer Using Educators 2022 Annual Conference will be held on November 29 - December 1 at the Hyatt New Orleans.

- [Registration](#) is open until November 19.

Please contact digitallearning@la.gov with questions.

eSER Update

Due to the current issues with eSER, the Department will run the official IDEA Child Count on December 16. **Please note the count date will not change.** The IDEA Child Count Date is still October 3. The new deadline will allow school systems more time to enter student data and ensure an accurate child count.

For courses where the April Dunn Act will be applied, individual performance criteria (IEP goals and objectives) must be established within 30 days of a student entering the course.

Support for Paraprofessionals and Support Staff

- Recent live webinars providing foundational skills instructional support for paraprofessionals and support staff are available in the [Literacy Library](#).
 - Session 1 - Introduction to the Science of Reading
 - Session 2 - Supporting Literacy in the Classroom
 - Session 3 - Using Literacy Resources to Support Instruction

Foundational Skills and Content Literacy Support for Grades 3-12

- Live webinars providing foundational skills instructional support and content literacy support for 3-12 grade teachers are underway and past sessions are available in the [Literacy Library](#).
 - [Schedule of Sessions](#)
 - Sessions on foundational skills support in grades 3-12 explore how to determine a starting point using data, conducting fluency and skills probes, and how to provide instructional support to struggling readers based on individual needs.
 - Content literacy support sessions guide teachers through the use of resources to support comprehension across all content areas.



2022-2023 Compass Information System (CIS) and Evaluation Updates

The CIS system will open for the 2022-2023 school year on October 24 to allow for roster updates and data entry. Systems are encouraged to begin setting SLTs and conducting observations prior to this date. The [CIS timeline](#) provides suggested date ranges for completion of all evaluation components.

All evaluators must complete the [Rater Reliability Evaluator Training](#) annually prior to completing evaluations. Completion is assured by submitting the survey linked in the [companion](#).

A [professional practice evaluation rubric request](#) should be submitted to compass@la.gov for approval of alternate observation rubrics.

Please contact compass@la.gov with questions.

Professional Practice Scores 2022-2023

Current policy requires that teachers and administrators be observed **twice per year**.

The waiver that was in place for 2021-2022 that required only one formal observation for those who earned a rating of “Highly Effective” or “Effective: Proficient” (score of 2.5 or higher) on the first formal observation is no longer in place. All teachers and administrators must be observed twice per year.

Please contact compass@la.gov with questions.

Summit Extensions: Save the Date

To extend some of the major learning from Teacher Leader Summit, LDOE will host [Summit Extensions](#) that will focus on supporting system leaders in implementing effective professional learning structures. These half-day meetings will be held in November and January in four regions of the state.

The focus of the November Extension is to release the Professional Learning Roadmap and system-level instructional leadership teams. The Extensions will be held from 9:30-12:30, and registration is open and is on a first come, first served basis.

November 1: Shreveport

November 2: Baton Rouge

November 3: Harvey

November 4: Lafayette

Please contact LDOEEvents@la.gov with any questions.



Teacher Leader Summit 2023

Save the Date! The 2023 Teacher Leader Summit will be held **May 30 - June 1, 2023** at the Ernest N. Memorial Convention Center in New Orleans, LA.

The 2023 Teacher Leader Summit is an annual professional development conference which brings together Louisiana birth to grade 12 educators and content experts who inspire, innovate, and impact meaningful growth for every student. Educators participating in the event will share their knowledge, learn new skills, and prepare for the 2023-2024 school year.

Additional details regarding registration and session topics will be available this winter.





DO NOW

SSI 2022-2023: The Comeback!

School Support Institutes are now underway! Nearly 1,600 participants representing Instructional Leadership Teams from around the state are attending Session #1 this week in one of our four cohort locations in Monroe, Shreveport, Lafayette and New Orleans.

SSI participants are encouraged to stop by the photo booth at their venue and tag us on Twitter and Facebook with ***#SSITheComeback***

For updates from these exciting sessions, please follow LDOE on Twitter (LDOE@la_Believes) and Facebook (Louisiana Department of Education)



SSI: Session #2- Virtual

Virtual sessions will follow each face-to-face session. Virtual sessions are half-day events and will provide participants with the opportunity to follow-up on and evaluate the application of learning from Session #1.

Cohort	Session #2 Date
Shreveport	October 26
Lafayette	October 27
New Orleans	October 28



SSI Session #3: Cohort Dates and Locations

Dates	Cohort Locations
January 31	<i>Monroe Cohort:</i> The Hanger at ULM, 700 University Avenue, Monroe, LA 71209
February 1	<i>Shreveport Cohort:</i> Shreveport Convention Center, 400 Caddo Street Shreveport, LA
February 2	<i>Lafayette Cohort:</i> University of Louisiana at Lafayette Student Union 620 McKinley Street, Lafayette, LA
February 3	<i>New Orleans Cohort:</i> Ernest N. Morial Convention Center, 900 Convention Center Blvd, New Orleans, LA

Please contact nadia.stewart@tntp.org if any changes need to be made to cohort locations.