

LOUISIANA DEPARTMENT OF EDUCATION



**Teaching and Learning
Monthly Call**
September 28, 2022

Agenda

- I. Spotlight: Instructional Best Practices for Students with Disabilities
- II. Academic Content
- III. Diverse Learners
- IV. Literacy
- V. Educator Development
- VI. School Improvement

Suggested participants for this call:

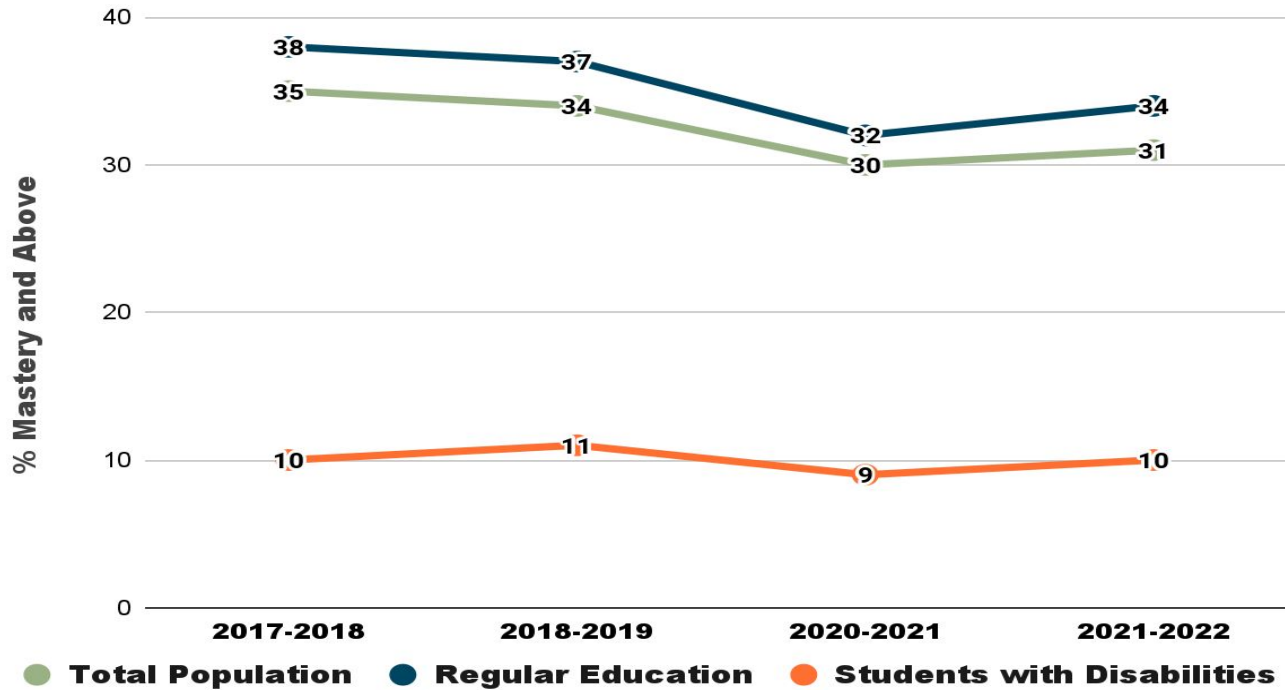
- Early Childhood Supervisors
- Chief Academic Officers/Curriculum Supervisors
- Literacy Coordinators
- Special Education Supervisors
- English Learner Supervisors
- Content and Mentor Leader Coordinators
- Talent Supervisors
- EdTech Directors and Coaches



Instructional Best Practices for Students with Disabilities



Percent Mastery and Above: Grades 3-HS, All Subjects, by Student Group



Students with disabilities remained behind regular education students in LEAP performance in 2022. Ten percent of students with disabilities scored Mastery or above, compared with 34% of regular education students.

Three Best Practices



FOCUS
ON CORE
INSTRUCTION

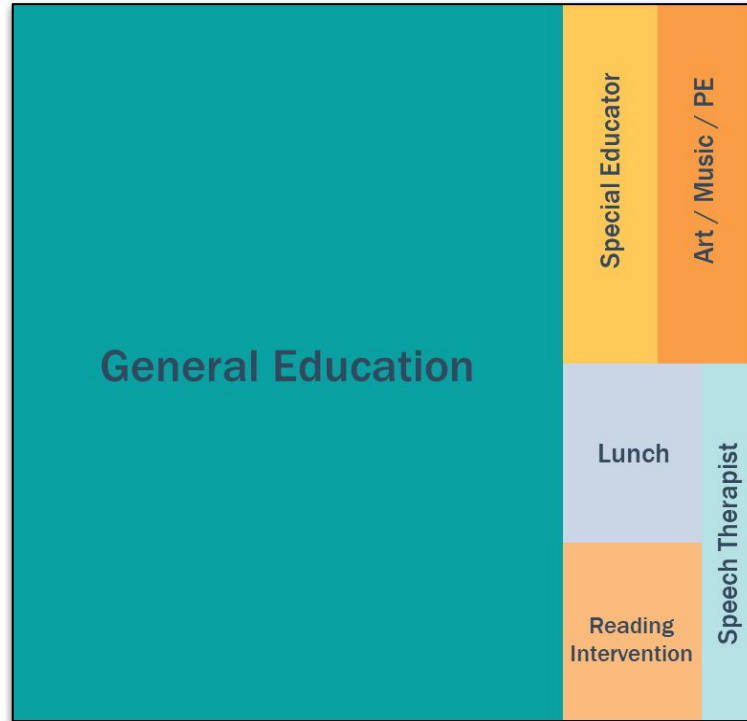


EXTRA
TIME TO
LEARN



CONTENT
STRONG
TEACHERS

Inclusive Core Instruction Matters Most!



Success During Core Instruction

More of This	Less of This
Use high-quality materials to accelerate learning and use student formative data to determine where supports will be needed	Use lower-level materials or pulling students out of core instruction
Use scaffolding techniques to support student success	Avoid challenging activities all together
Collaborate and intentionally plan (sped and content) for instruction supports prior to each lesson; annotating lessons for specific student supports	Leave out individualized supports and avoid intentional lesson planning
Provide accommodations consistently during classroom instruction to support students in mastering grade-level content	Only provide accommodations on statewide assessments

Effective Intervention Requires Dedicated Time

**BEST PRACTICE
ELEMENTARY
SCHEDULE**

READING

MATH

INTERVENTION

LUNCH AND RECESS

ART

SCIENCE

**CONNECTED TO
THE CORE CONTENT**

**PRE-TEACH
AND RE-TEACH
CURRENT MATERIAL**

**FILL IN MISSING
FOUNDATIONAL SKILLS
AND CORRECT PAST
MISUNDERSTANDINGS**

**COLLABORATIVE
PLANNING AMONG
SPED AND CONTENT**

High Quality Extra Time Supports/Intervention

More of This	Less of This
Instruction is connected to core class instruction; active, hands-on, individualized supports	Support during intervention is disconnected from core instruction
Emphasis on <i>forward movement</i> ; goal is for students to <i>learn on time with peers</i>	Emphasis on <i>backward movement</i> ; goal is for students to <i>catch up to peers</i>
Foundational skills are hand-picked just in time for new concepts and opportunities to build key prior knowledge are provided ahead of time	Instruction attempts to reteach every “missing” skill or concept

Support By Content Strong Educators

Why	How
<ul style="list-style-type: none">● Have formal training in the content they teach● Have a love and aptitude for the subject matter● Can see a mistake and infer the misconception● Can teach a concept three or more ways	<ul style="list-style-type: none">● Educators must believe that all students, with the appropriate supports, can achieve● Participate in teacher collaboration structures● Attend professional development on high-quality curriculum● Ongoing feedback cycles



There is **ABILITY** in every **DisABILITY**.

Call to Action: High Quality Teaching and Learning for Students with Disabilities

1. You all are champions of high expectations!
2. Engage in intentional, direct instruction on grade-level content with IEP-driven and student-specific supports!
3. Build your capacity!

“Know me for my **ABILITIES**, not my disability.”
(Robert M. Hensel)



Academic Content



Instructional Materials Review Updates

Recently Published Tier I Materials

The Department conducts ongoing reviews of curricular materials to support school systems in adopting curricula in all core subjects. Newly rated Tier 1 curricula is listed below. All reviewed curricula can be found on the [Tiered Reviews](#) webpage.

Publisher	Title and Grade Levels	Core Subject	Tier
Savvas Learning Company LLC	enVision Math, Grades K-2	Math	Tier 1



IMR - Tier 1 Reviews Archiving 12/31/22

Several ECE, ELA, math, and social studies reviews will **archive in December**. School systems should consider the archive dates when **selecting curricula for next school year**.

The [Archive Dates for all Tier 1 & 2 Reviews](#) is located on the Tiered Reviews webpage and indicates whether the publisher has submitted updated materials for review.

Please contact louisianacurriculumreview@la.gov with questions.



Official Archive Date	Tier	Subj/Grade Band	Publisher	Submission
12/31/22	Tier 1	ECE	Abrams Learning Trends/Frog Street	DIG Develop
12/31/22	Tier 1	ECE	Frog Street Press	Frog Street
12/31/22	Tier 1	ECE	Frog Street Press	Frog, Infant
12/31/22	Tier 1	ECE	Kaplan Early Learning Company	Learn Even
12/31/22	Tier 1	ECE	Pearson Education	Opening th
12/31/22	Tier 1	ECE	Teaching Strategies, LLC	The Creativ
12/31/22	Tier 1	ECE	Teaching Strategies, LLC	The Creativ
12/31/22	Tier 1	ECE	Voyager Sopris Learning, Inc.	We Can Ear
12/31/22	Tier 1	ELA 6-12	TE21, A Certica Solutions Company	CASE ELA B
12/31/22	Tier 1	ELA 6-12	TE21, Inc.	CASE Bench
12/31/22	Tier 1	ELA K-5	American Reading Company, Inc.	IRLA Found
12/31/22	Tier 1	ELA K-5	Core Knowledge	Core Know
12/31/22	Tier 1	ELA K-5	Core Knowledge	Core Know
12/31/22	Tier 1	Math 6-12	Great Minds	Eureka Mat
12/31/22	Tier 1	Math 6-12	Great Minds	Eureka Mat
12/31/22	Tier 1	Math K-5	Great Minds	Eureka Mat
12/31/22	Tier 1	Math K-5	Zearn, Inc.	Zearn Math



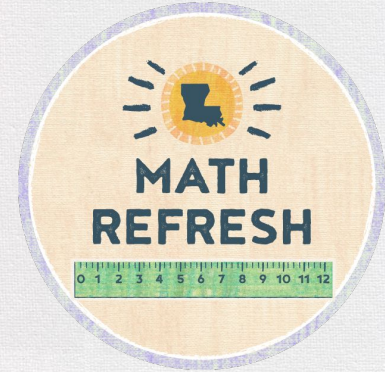


IN THE FUTURE

Accelerating Math Learning: Louisiana's Math Refresh

The Department is launching a new initiative to support students in catching up and moving forward in mathematics.

The [Louisiana Math Refresh](#) will provide strategically focused support to teachers and school and system leaders in two key areas:



- Funding to support a refresh of math materials to ensure resources used during any instructional time are of the same high level of quality as core instruction
- Explicit guidance, resources, and professional learning to support a refresh of existing instructional practices to align with evidence-based approaches for maximum impact in accelerating students' math progress

Please contact STEM@la.gov with questions.



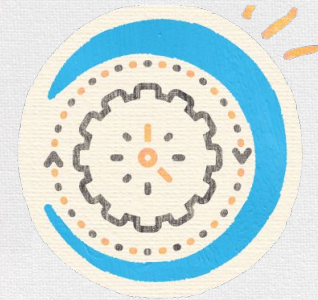
Accelerating Math Learning: Louisiana's Math Refresh



Teachers have access to **high-impact structures and systems** to support their growth.



Teachers have access to **high-quality, aligned resources**.



Teachers are prepared to lead **highly-effective instruction in positive, inclusive environments** every day.

Please contact STEM@la.gov with questions.



Louisiana Math Refresh: Support Schedule

Key Event	Timeline
special webinar for school and system leaders <i>“Louisiana’s Math Refresh: Accelerating Learning for Every Student ”</i>	October 6 at 10 a.m.
Math Refresh funding opportunity and resources released with 2023-2024 School System Planning Guide	October 20
Launch of Math Refresh Library	November
ongoing opportunities for professional learning and individualized assistance provided by LDOE	October 2022 - January 2023

Please contact STEM@la.gov with questions.



Louisiana Math Refresh Kickoff Webinar

Join Superintendent Brumley and a panel of special guests for this launch of Louisiana's Math Refresh as we endeavor to support all children in catching up and moving forward in mathematics.

Webinar Date and Time: October 6 at 10 a.m.

Webinar Link:

<https://ldoe.zoom.us/j/96609892192?pwd=bFJrTGJPa3l0VW5YdFVvTWQxLzRhQT09>

Invited Participants: Louisiana school and system leaders including academic officers, math supervisors, and principals

Please contact STEM@la.gov with questions.



K-12 Computer Science Education Engagement Opportunity

The Department is currently seeking feedback to inform the work within computer science education in our state.

Educators can be involved by completing an [interest form](#) to join future feedback discussions or by completing a [short survey](#).

The information gathered will be used to inform:

- the creation of STEM resources and tools for K-12 educators;
- professional learning needs for future work; and
- support schools and systems to broaden STEM education.

Please contact STEM@la.gov with questions.



2022 LACUE Conference

The Louisiana Association of Computer Using Educators 2022 Annual Conference will be held on November 29 - December 1 at the Hyatt New Orleans.

- The [submission portal](#) for proposals is open. Proposal submissions are due by October 1. If a proposal is accepted, notifications will be sent by October 21.
- [Registration](#) is open until November 19.

Please contact digitallearning@la.gov with questions.



Teacher Leader Advisor (TLA) Applications Expanded

In October and November, [TLA applications](#) will be released for STEM and EdTech, respectively. This is the first time teachers in these fields have had the opportunity to apply for a TLA position in their specific field.

Be on the lookout in the [weekly newsletter](#) and the [Teacher Leader newsletter](#) for more information, or check [the TLA flyer](#).

Please contact classroomsupporttoolbox@la.gov with questions.

Academic Content Contacts

For questions about...	Contact...
ELA Guidebooks	elaguidebooks@la.gov
math, science, and STEM	STEM@la.gov
environmental education	environmentaleducation@la.gov
All other curriculum and instruction	classroomsupporttoolbox@la.gov
Textbooks and instructional materials review, tiered reviews, vendors, and PD vendor guide	louisianacurriculumreview@la.gov
Teacher Leader Advisors	classroomsupporttoolbox@la.gov
World language/immersion	language.acquisition@la.gov
Educational Technology/Digital Learning	digitallearning@la.gov



Diverse Learners Supports





DO NOW

2020-2021 LEA Determinations

The Department is required to issue LEA Determinations to each school system on their provision of special education and related services. Draft LEA Determinations were disseminated to school systems via the FTP the week of September 12th.

We are extending the clarification period to address any concerns with determinations to October 7.



DO NOW

eSER Update

Due to the current issues with eSER, the Department will run the official IDEA Child Count on December 16. **Please note the count date will not change.** The IDEA Child Count Date is still October 3. The new deadline will allow school systems more time to enter student data and ensure an accurate child count.

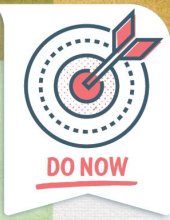
For courses where the April Dunn Act will be applied, individual performance criteria (IEP goals and objectives) must be established within 30 days of a student entering the course.



DO NOW

Seclusion and Restraint

The LDOE is required to collect and annually report the use of seclusion and restraint for students with disabilities. School systems will receive a seclusion and restraint draft report to verify their 2021-2022 data. Draft reports will be available via the FTP the week of **October 10**.



SPED Camera Funding Update

At the August BESE meeting, the allocation of \$8 million was approved to support the purchase and installation of camera systems in self-contained classrooms.

[Allocation funding](#) will be sent directly to school systems and will not be on a reimbursement basis. Payments will be released on or before September 29.

School systems should begin planning a process to communicate the availability of these funds to families now anticipating that the funding will soon be received. Additional details on the requirements surrounding the administration of these funds by school systems will be provided via eGMS at the end of the month.

For further information, contact specialeducation@la.gov.

Families Helping Families Spotlight

 ***Cultivate high-impact systems, structures and partnerships*** is one of the Department's five educational priorities.

At the state level, we partner with [the ten Families Helping Families centers across the state](#) to support families of students with disabilities.

Several districts, centers, and schools have partnered with the Families Helping Families center in their area to support their staff with training or provide a school advocate for parents.

Kudos to these districts, centers, and schools for cultivating partnerships to support families:

Bossier Parish Head Start, Claiborne Parish Schools, St. Helena Parish Schools, Inspire NOLA Schools, Edward Hynes Charter School

Diverse Learner Contacts

For questions about...	Contact...
English Learners	
English Learner instructional support and content	diverselearnersupport@la.gov
English Learner compliance, federal funding, programming	alice.garcia@la.gov
Students with Disabilities	
Special Education policy, data, reporting	specialeducation@la.gov
Special Education instructional support and programming	diverselearnersupport@la.gov

Literacy



Support for Paraprofessionals and Support Staff

- Recent live webinars providing foundational skills instructional support for paraprofessionals and support staff are available in the [Literacy Library](#).
 - Session 1 - Introduction to the Science of Reading
 - Session 2 - Supporting Literacy in the Classroom
 - Session 3 - Using Literacy Resources to Support Instruction

Foundational Skills and Content Literacy Support for Grades 3-12

- Live webinars providing foundational skills instructional support and content literacy support for 3-12 grade teachers are underway and past sessions are available in the [Literacy Library](#).
 - [Schedule of Sessions](#)
 - Sessions on foundational skills support in grades 3-12 explore how to determine a starting point using data, conducting fluency and skills probes, and how to provide instructional support to struggling readers based on individual needs.
 - Content literacy support sessions guide teachers through the use of resources to support comprehension across all content areas.

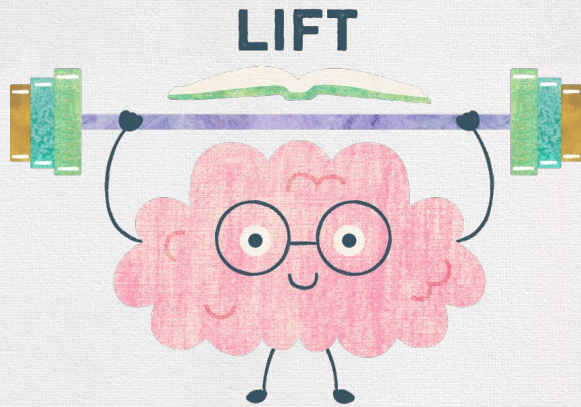
School Spotlight: Northshore Charter School

Literacy team members met with literacy coaches and paraprofessionals at Northshore Charter School in Bogalusa to discuss the implementation of the [LIFT Kit](#) and how it can provide targeted support to struggling readers in grades 3 and beyond.



School Spotlight: Hurst Middle School

Middle school teachers at Hurst Middle School in St. Charles Parish were excited to learn how the [LIFT Kit](#) can help their struggling readers fill reading gaps and become more fluent, confident readers.





Educator Development



Teacher Leader Lagniappe

LDOE's podcast, [Teacher Leader Lagniappe](#) provides *a little something extra* for educators to stay inspired, motivated, and connected in the work with students.

Season 2

- Episode 4: Changing the Culture of Attendance with Dr. Judith Rhodes
- Episode 5: Changing our Minds with Sheena Lall
- Episode 6: Legislative Lowdown with Ethan Melancon

Educators can [submit pictures and stories](#) of the great work happening in their system to be highlighted on the podcast. Subscribe through [Apple](#) Podcasts, Google Play, [Spotify](#), or other apps.

Please contact em.cooper@la.gov with questions.





Compensation and Incentives Study

The Department, in partnership with SSA Consultants, is conducting a statewide compensation and incentives study. This study will provide a report on the current state of total compensation and incentives for educators in the 191 school systems in Louisiana, conduct a gap analysis to compare Louisiana to other southern states, as well as develop recommendations to improve the recruitment and retention of educators in Louisiana.

In order to have a state of the state on compensation and incentives for Louisiana's educators we are asking each school system superintendent or his/her designee (human resources officer, chief financial officer) to complete the [Compensation and Incentives Study Survey](#) by **October 14**.

Please contact brandy.garrett@la.gov with questions.

Recruitment, Recovery, and Retention Listening Sessions

The Department, in partnership with the Region 14 Comprehensive Center, will be hosting an additional series of facilitated listening sessions across the state to provide the opportunity for stakeholders to describe their experiences and perceptions as well as offer suggestions on issues related to teacher recruitment, recovery, and retention.

Stakeholder Group	Session Links
Teacher Stakeholder Sessions	Thursday, October 6 at 10 a.m. Monday, October 17 at 12 p.m. Tuesday, October 18 at 9 a.m. Thursday, October 20 at 3 p.m.
Principal Stakeholder Sessions	Monday, October 10 at 9 a.m. Friday, October 14 at 11 a.m. Tuesday, October 18 at 8 a.m. Wednesday, October 19 at 12:30 pm.

Please contact louisianaleaders@la.gov with questions.



Evaluation Upload Window for 2021-2022 Evaluations

All teacher and staff evaluations should be entered or [uploaded](#) into the Compass Information System (CIS) no later than **September 30**. Following the VAM release on October 7, systems will have until October 21 to make final adjustments. On October 22, CIS will close for the 2021-2022 school year, and all teacher evaluations will automatically finalize.

Please note that communication regarding 2021-2022 leader evaluation uploads will be released when SPS scores are published.

Please contact compass@la.gov with questions.



2022-2023 Compass Information System (CIS) and Evaluation Updates

The CIS system will open for the 2022-2023 school year on October 24 to allow for roster updates and data entry. Systems are encouraged to begin setting SLTs and conducting observations prior to this date. The [CIS timeline](#) provides suggested date ranges for completion of all evaluation components.

All evaluators must complete the [Rater Reliability Evaluator Training](#) annually prior to completing evaluations. Completion is assured by submitting the survey linked in the [companion](#).

A [professional practice evaluation rubric request](#) should be submitted to compass@la.gov for approval of alternate observation rubrics.

Please contact compass@la.gov with questions.

Professional Practice Scores 2022-2023

Current policy requires that teachers and administrators be observed **twice per year**.

The waiver that was in place for 2021-2022 that required only one formal observation for those who earned a rating of “Highly Effective” or “Effective: Proficient” (score of 2.5 or higher) on the first formal observation is no longer in place. All teachers and administrators must be observed twice per year.

Please contact compass@la.gov with questions.

K-2 Learning Year: Phase I

The fall observation window is now open for the K-2 Learning Year: Phase I.

- All participating classroom information should be updated in the [K-2 Portal](#).
- The [K-2 Portal User Guide](#) is available in the [Accountability Library](#).
- All observations should be entered by December 15.

Please contact lori.pennison@la.gov with questions.



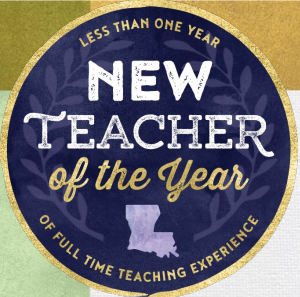
Science Collaborative

The Department is excited to announce that the [application](#) for the Science Collaborative is now open. This Science Collaborative is designed to bring together the best minds from both teacher preparation and K-12 to design teaching methods syllabi for elementary and secondary science courses that, in turn, will be available for public use.

Who should apply?

- Strong K-12 educators who help support science instruction (e.g., science curriculum coaches, current science content leaders, district science supervisors)
- Higher education faculty who teach science methods courses
- Higher education faculty who teach science courses for education majors

Interested educators should submit the application to believeandprepare@la.gov by 5 p.m., **October 7**. Please contact believeandprepare@la.gov with questions.



New Teacher of the Year

The Louisiana Department of Education recognizes that great teachers and school leaders are critical to student success. Annually, the Department, recognizes and celebrates some of the state's most exceptional educators through the New Teacher, Teacher, and Principal of the Year programs. These programs provide an opportunity to acknowledge those teachers and leaders who are making exceptional gains with students.

The 2024 New Teacher of the Year application will launch on **October 11, 2022**. The LDOE will host calls the week of October 10 to provide additional details. Visit the New Teacher Experience [webpage](#) for more information.

As a reminder the [nomination portal](#) is still open until **September 30**. These nominees will be shared with system leaders.

Please contact Laurie.carlton@la.gov with any questions.

K-2 Literacy Content Leader Assessments

[K-2 Literacy Content Leaders](#) are elementary educators who, through training, develop and prepare to share their expertise with other teachers.

The Department is piloting a new assessment series for the K-2 Literacy Content Leader participants this school year. This assessment series will assess participants' deep understanding of literacy and also their ability to support other educators. The assessments are embedded throughout the training. The assessment will be administered and scored by the participant's training provider.

Participants from the 2021-2022 K-2 Literacy Content Leader training are eligible for the Content Leader credential with successful program completion.

Please contact believeandprepare@la.gov with any questions.

ELA Content Leader Updates

To support the redesigned ELA Guidebooks 3-5 (2022), the LDOE has worked with Schoolkit to revise the Content Leader training materials. These updates include:

- Asset-based language instead of deficit-based language;
- Updated ELA Guidebooks images;
- A new anchor unit (Shutting Out the Sky, Grade 5);
- Infusing and highlighting updated resources, lesson structure, and activities;
- The Writing Revolution© approach and strategies;
- Decreasing the number of Content Leader modules from 3 to 2; and
- Focusing the learning around leading effective teacher collaboration.

Currently approved ELA Content Leader training providers will receive access to these revised material and guidance on how to incorporate into their ELA CL training.

Please contact believeandprepare@la.gov with any questions.

Summit Extensions: Save the Date

To extend some of the major learning from Teacher Leader Summit, LDOE will host [Summit Extensions](#) that will focus on supporting system leaders in implementing effective professional learning structures. These half-day meetings will be held in November and January in four regions of the state.

The focus of the November Extension is to release the Professional Learning Roadmap and system-level instructional leadership teams. The Extensions will be held from 9:30-12:30, and registration is open and is on a first come, first served basis.

November 1: Shreveport

November 2: Baton Rouge

November 3: Harvey

November 4: Lafayette

Please contact LDOEEvents@la.gov with any questions.



Teacher Leader Summit 2023

Save the Date! The 2023 Teacher Leader Summit will be held **May 30 - June 1, 2023** at the Ernest N. Memorial Convention Center in New Orleans, LA.

The 2023 Teacher Leader Summit is an annual professional development conference which brings together Louisiana birth to grade 12 educators and content experts who inspire, innovate, and impact meaningful growth for every student. Educators participating in the event will share their knowledge, learn new skills, and prepare for the 2023-2024 school year.

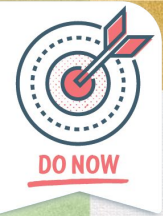
Additional details regarding registration and session topics will be available this winter.





School Improvement





SSI 2022-2023: The Comeback!

School Support Institutes are now underway! Nearly 1,600 participants representing Instructional Leadership Teams from around the state are attending Session #1 this week in one of our four cohort locations in Monroe, Shreveport, Lafayette and New Orleans.

SSI participants are encouraged to stop by the photo booth at their venue and tag us on Twitter and Facebook with ***#SSITheComeback***

For updates from these exciting sessions, please follow LDOE on Twitter (LDOE@la_Believes) and Facebook (Louisiana Department of Education)





SSI: Session #2- Virtual

Virtual sessions will follow each face-to-face session. Virtual sessions are half-day events and will provide participants with the opportunity to follow-up on and evaluate the application of learning from Session #1.

Cohort	Session #2 Date
Monroe	October 25
Shreveport	October 26
Lafayette	October 27
New Orleans	October 28



SSI Session #3: Cohort Dates and Locations

Dates	Cohort Locations
January 31	<i>Monroe Cohort:</i> The Hanger at ULM, 700 University Avenue, Monroe, LA 71209
February 1	<i>Shreveport Cohort:</i> Shreveport Convention Center, 400 Caddo Street Shreveport, LA
February 2	<i>Lafayette Cohort:</i> University of Louisiana at Lafayette Student Union 620 McKinley Street, Lafayette, LA
February 3	<i>New Orleans Cohort:</i> Ernest N. Morial Convention Center, 900 Convention Center Blvd, New Orleans, LA

Please contact nadia.stewart@tntp.org if any changes need to be made to cohort locations.



Call Summary





LDOE Contact List

Who is submitting this contact?

First Name

Last Name

What's the email address of the person submitting this request?

example@example.com

My School System is: *

000 Default ▾

I need to: * Create a new contact
 Update an existing contact
 Delete a contact

For my LEA I am the/a (select all that apply): *

504 Coordinator

LDOE Contact List

So that we can best collaborate with your various teams, please ensure you and your colleagues update your school system contact information in the LDOE Contact List:

<https://form.jotform.com/LDOE/ldoe-contact-list>.

The following additional roles have been recently added:

- IT/Technology Director
- Educational Technology Director
- Educational Technology Coach

Contact classroomsupporttoolbox@la.gov with questions.

Key Deadlines & Action Steps

September	<ul style="list-style-type: none">● September 11: Deadline to submit application for Quality Math and Science (QSM) Grant● September 30: Finalize all non-VAM 2021-2022 teacher evaluations and enter or upload all 2021-2022 VAM teacher observation and SLT data● September 28: Registration for Summit Extensions opens● September 30: Evaluation system surveys due, leader survey and teacher survey● September 30: Special Education Leader Survey due● September 30: TOY, NTOY, POY Nominations due
October	<ul style="list-style-type: none">● October 1: Deadline for Residents and Mentors to hold credentials required for funding● October 7: Deadline to apply for science collaborative● October 11: NTOY 2024 application launch● October 14: Deadline for the Compensation and Incentives Survey● October 18-19: AEMing for Success conference● October 21: Final date to make adjustments to 2021-2022 teacher evaluations in CIS● October 24: CIS opens for 2022-2023 roster updates and data entry
November 2023	<ul style="list-style-type: none">● November 1-4: Summit Extensions● November 19: Deadline to register for 2022 LACUE Conference
January 2023	<ul style="list-style-type: none">● January 9: Finalize all leader evaluations for 2021-2022
February 2023	<ul style="list-style-type: none">● February 6: Deadline to nominate grade 7-12 STEM teachers for the Presidential Award for Excellence in Mathematics and Science Teaching

Upcoming Webinars & Calls

Month	Date, Time, Title and Zoom Link
September	<ul style="list-style-type: none">● September 28, 2 p.m.: Young Children with Disabilities Community of Practice● September 28, 4 p.m.: Monthly Grow Your Own Program Implementation Best Practices Office Hours
October	<ul style="list-style-type: none">● October 3, 1 p.m.: Practicing Principal Webinar● October 6, 10 a.m.: Accelerating Math Learning: Evidence and Impact Webinar● October 13, 3:30 p.m.: Social Studies - Grades K-3: Preparing for the Transition and Building Content Knowledge● October 27, 3:30 p.m.: Social Studies - Grades 4-5: Preparing for the Transition and Building Content Knowledge● October 6, 17, 18, 20: Recruitment, Recovery, and Retention Teacher Stakeholder Sessions● October 10, 14, 18, 19: Recruitment, Recovery, and Retention Principal Stakeholder Sessions

Support & Resources

- [School System Support Calendar](#)
- [ELA Guidebooks 3-5 \(2022\) Pilot Feedback Report](#)
- [Google Sheets Updates to Save Time](#) includes information on three Sheets features, along with additional tutorials
- [IMR Weekly Report](#)
- [Comprehensive Tiered Report](#)
- [Archived Tiered State Reviews](#)
- [Archive Dates for Tier 1 & 2 Reviews](#)



Reminders & Repeats



SPED Leader Survey

The Louisiana Department of Education is seeking input about the current structures that support students with disabilities engaging in high-quality instruction.

The information gathered from this [Special Education Leader Survey](#) will inform the LDOE's understanding of how to best support LEAs in providing specialized supports and capacity building of leaders who support students with disabilities.

Please complete by **Friday, September 30.**



DO NOW

AEMing for Success Conference

Who: Educators and administrators supporting students with assistive technology supports

What: [Louisiana Accessible Educational Materials](#) is hosting the 4th annual conference for educators working with students with exceptionalities. An opportunity to deepen your assistive technology knowledge and strengthen your implementation strategies.

When: October 18-19

Where: Crowne Plaza, Baton Rouge

Please contact robin.king@la.gov with questions.



Supports for Grades 3-5: Foundations Lessons

Foundational Instruction for Reading Excellence (FIRE) lessons provide a systematic, explicit reading foundations program for ALL students in grades 3-5.

- Three units are comprised of forty, ten-minute lessons, including two skills “check-points” that assess students on skills targeted in that unit.
- These lessons are intended to be delivered during whole group instruction.
- Lessons are designed to provide direct instruction in three key areas: advanced spelling patterns, grammar, and morphology.
- These lessons do not replace, but rather complement existing reading programs.
- Find Unit 1 materials in the [Literacy Library](#). Units 2 and 3 will be released this Fall.

Supports for Grades 6-12: Content Literacy

Content Literacy involves basic literacy skills needed to comprehend and write throughout the different content areas. All teachers are literacy teachers. To support teachers of other content areas in middle and high school with incorporating literacy practices in their instruction, the [Literacy Library](#) has Content Literacy Support for:

- a. [Annotating Text](#)
- b. [Independent Reading](#)
- c. [Partner Reading](#)
- d. [Using Rubrics](#)
- e. [Using Student Exemplars](#)
- f. [Whole Class Read Aloud](#)

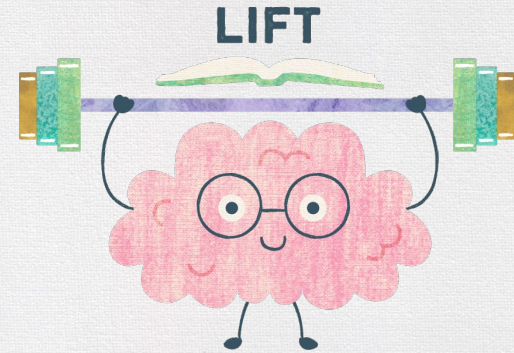
The Department anticipates releasing more supports this Fall (Fall 2022).

Intervention Resources for Grade 3 and Beyond

The Literacy Interventions and Foundational Tools (LIFT) Kit helps teachers pinpoint specific gaps in foundational skills for students beyond Grade 2. It includes:

- fluency passages
- code-knowledge inventory
- phonological awareness screener
- intervention activities targeted to specific skill needs of students
- student recording trackers

All resources are housed in the [LIFT Library](#).



Literacy Plan Development Support

The first two sessions of a series of webinars to support literacy leaders with the development of local literacy plans have been released.

- The [first webinar](#) focuses on setting and monitoring literacy goals. The [resources](#) provide literacy leaders with targeted support for [developing literacy goals](#) that are specific, measurable, achievable, relevant, and time-bound.
- The [second webinar](#) focuses on the inclusion of explicit literacy instruction, interventions, and extensions in local literacy plan goals and action steps. The associated [resources](#) provide literacy leaders with targeted support for planning and implementing literacy best practices.
- Look for the next webinar on planning for ongoing professional growth opportunities in local literacy plans in mid-September.
- These webinars and [related resources](#) can also be found in the [Literacy Library](#) under Local Literacy Plan Guidance.

Praxis Core Updates

Last fall, the Teacher Recruitment, Recovery, and Retention Task Force studied the barrier of Praxis Core on recruiting teachers into the profession. As a result of the study, the Task Force unanimously endorsed a proposal to remove the requirement of a core academic skills assessment (e.g. Praxis Core, ACT, SAT) from entry into a teacher preparation program and for initial licensure.

Acts [707](#) and [244](#) of the 2022 Regular Legislative Session were passed removing the requirement of a core academic skills assessment (e.g. Praxis Core, ACT, SAT) as a requirement for entering the profession and for teacher licensure.

BESE recently approved the removal of the requirement of a core academic skills assessment (e.g. Praxis Core) for both entrance into a Teacher Preparation Program and for licensure at today's meeting. All other requirements (Praxis II, GPA, etc.) remain the same.

Please contact em.cooper@la.gov with questions.

2022-2023 Mentor Credential Waiver

At the April BESE meeting, the Board approved a waiver for the Mentor policy for the 2022-2023 school year. Mentor teacher waivers will be granted on a case-by-case basis through the application process established by the LDOE and at no fee to the applicant, school system, or teacher preparation provider. **School System Mentor Coordinators should initiate each Mentor Waiver Application.** For completion guidance, refer to the [2022-2023 Mentor Waiver Application Guide](#).

2022-2023 Mentor Waiver Application Link: <https://louisianabelieves.smapply.io/prog/>

Mentor Waiver Applications must be created by the system leader responsible for resident placement and/or Mentor recruitment and support. Mentor waivers should be in place prior to **October 1**. The application will remain open until June 2023.

Please contact believeandprepare@la.gov with questions.

2022-2023 Mentor and Resident Compensation

- During the most recent legislative session, funding for Mentor teachers was approved as part of the MFP budget.
- Mentors will now receive \$2,000. Year-long undergraduate residents will receive \$3,300.
- Mentors of both yearlong undergraduate residents and post-baccalaureate residents (first year PLs) will receive funding this year.
- School systems receive this funding in their MFP and are responsible for paying residents and Mentors.
- If systems did not attend the Mentor funding webinar to learn more about the data collection process, the deck can be accessed in the [Mentor Library](#).

Please contact believeandprepare@la.gov with questions.



The [Louisiana Pre-Educator Pathway](#) is a Grow Your Own initiative focused on high quality early career development for the next generation of Louisiana's educators. In the 2022-2023 school year, a series of supports will be offered to support Louisiana school systems in the development, implementation, and expansion of the Louisiana Pre-Educator Pathway.

- [Pre-Educator Pathway Resource Library](#)
- [System Lead Professional Learning Community](#)
- [Grow Your Own Program Best Practices Office Hours](#)
- Grow Your Own Learning Visits
- Curriculum Training

Details and reminders about all supports will be shared through the [Pre-Educator Pathway Contact List](#).

Please contact believeandprepare@la.gov with questions.

Student Learning Target (SLT) Legislation/Policy Update

During the 2022 legislative session, [Act 333](#) was passed requiring a meeting between the evaluator and evaluatee to discuss student learning targets for each student.

Pending BESE approval, evaluators and evaluatees shall meet to discuss student learning targets, and student learning targets not discussed in a meeting between a person and his evaluator shall not be used in the person's evaluation.

Please contact compass@la.gov with questions.

Evaluation Systems Review

- As part of Louisiana's Recruitment and Retention Plan, the LDOE is reviewing the current Louisiana educator evaluation system that was created over ten years ago in order to identify areas for improvement.
- The LDOE is asking for the input of educators that are evaluated and educators that are evaluators via a survey.
- The [leader survey](#) and [teacher survey](#) close on September 30 and will provide educators an opportunity to share opinions and ideas on the current evaluation system.

Please forward these links to your staff and ask that the survey be completed by September 30.

Please contact compass@la.gov with questions.

Continuous Learning

Continuous learning should be provided to limit unfinished learning while maintaining access to instructional programming during modified operations. In accordance with BESE policy, school systems shall have a continuous learning plan for extended school closures reviewed by stakeholders and posted to the LEA website no later than June 30, 2023, and annually updated by June 30 of each year.

To prepare for this school year, the Department has released a [Continuous Learning Toolkit](#) to support system leaders in developing a continuous learning plan for when school closures may occur that require modified operations on a short-, medium-, or long-term basis. School systems should keep continuous learning plans at the system level and update annually.

Please contact keisha.thomas2@la.gov with questions.

New Teacher Experience

The [New Teacher Experience](#) is a comprehensive induction program that will offer multiple services designed to increase teacher effectiveness, enhance skills, and reduce attrition among beginning teachers. Components of the New Teacher Experience include:

- Affinity Groups
- Professional Development Modules
- Mentoring
- [Guidance Document](#)
- New Teacher of the Year award process
- New Teacher Experience [kick off event](#)
- New Teacher Experience [pilot](#)

More details about registering your new teachers for participation in these events will be coming this fall. Information about these programs can be found on the NTE [webpage](#).

Please contact laurie.carlton@la.gov with questions.