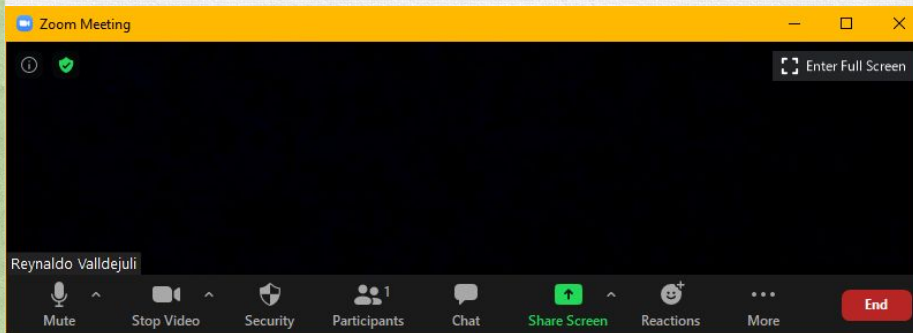


Zoom Meeting Preparation

- Please make sure your phone or computer is muted to minimize background noise.
 - To do this, hover over the bottom left-hand side of your screen and click “Mute.”
- Please make sure you have turned off your camera to save bandwidth and prevent any connectivity issues.
 - To do this, hover over the bottom left-hand side of your screen and click “Stop Video.”
- Please submit questions during the presentation in the “Chat” function located on the bottom of your screen.



NOTICE: In accordance with the Americans with Disabilities Act, if you need special assistance at this meeting please contact Idoecommunications@la.gov.



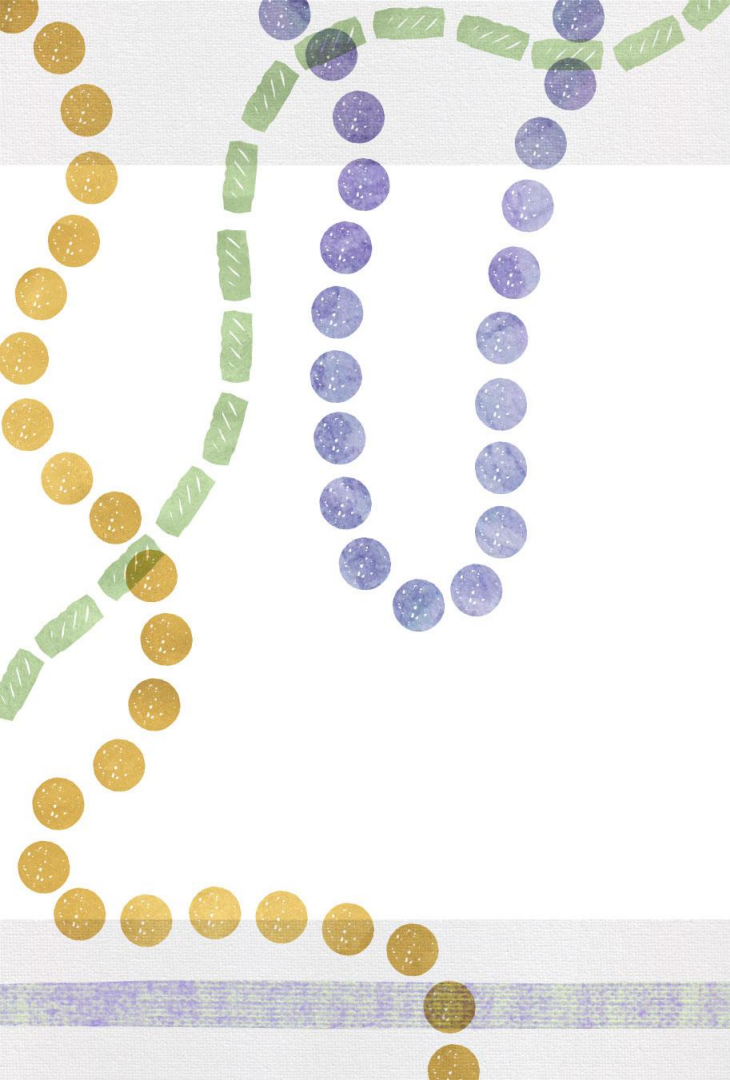
Student Well-Being Monthly Call

July 20, 2022



Agenda

Time	Topic	Presenter
9:30 - 9:35	Welcome	Rachel Bunch
9:35 - 10:00	My Community Cares	Amanda Brunson Jenny Forrest
10:15-10:25	Reminders	Rachel Bunch
10:25-10:30	Close	Rachel Bunch



My Community Cares



MY COMMUNITY CARES



MISSION & VISION OF MY COMMUNITY CARES

- ❖ The mission of MCC is to strengthen families and support communities.
- ❖ MCC envisions communities where all children and families are healthy and safe and have equitable access to services and supports.



MCC'S WORK IN COMMUNITIES

- ❖ MCC is a community-driven approach that brings children and families with lived experience in the child welfare system, communities and agencies together to co-design and implement a network of quality services and supports.
- ❖ The services and supports are provided with equity to promote child and family well-being and prevent children from entering the foster care system.
- ❖ Through MCC, children and families, and community members come together to establish relationships, share experiences, support one another and build community resiliency.

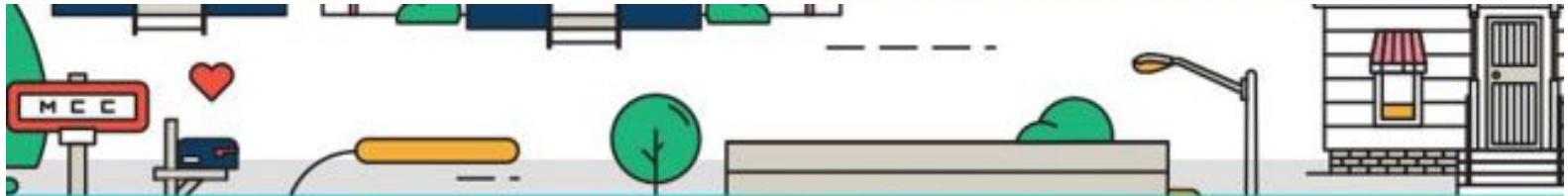
TEAMING STRUCTURE:

MCC neighborhood, parish, and state teams meet regularly to improve communication between community members and agency partners, identify and remove barriers to quality services, advocate for change, promote racial and socio-economic equity, and build a network of services and supports unique to each community.



MCC PRINCIPLES

- ❖ The safety, permanence, and well-being of children is improved when the community becomes a resource and community members are stakeholders in family support and stability, prevention, and child protection.
- ❖ Communities can be self-healing. Each community has unique challenges and opportunities and knows the solutions to their needs. One approach to supporting children and families will not work for all communities.
- ❖ Shared responsibility and decision making between community members and agencies to co-design strategies that connect children and families to the services and supports they need is critical.



THE HISTORY OF MCC



MCC DEVELOPMENT

- ❖ Developed in response to the 2018 Child and Family Services Review (CFSR) conducted on Louisiana's child welfare system
- ❖ Inspired by the federal Children's Bureau's new vision to shift from a reactive system to one centered on family strengthening



MCC STAKEHOLDERS

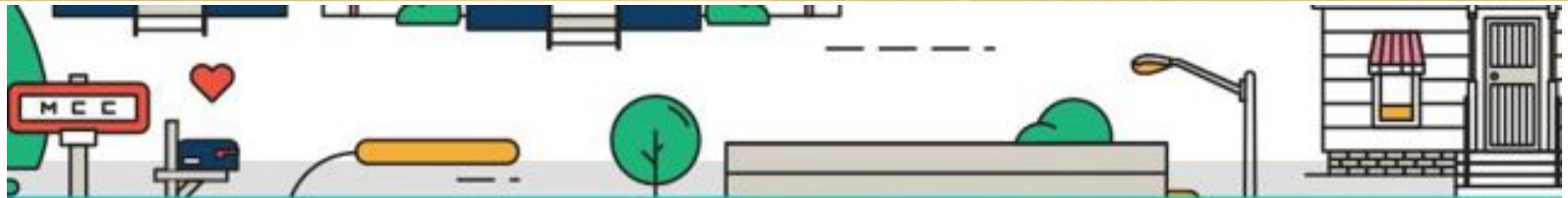
- ❖ Strategies co-designed with a multidisciplinary group of stakeholders:
 - ❖ Court Improvement Program of the LA Supreme Court
 - ❖ Pelican Center for Children and Families
 - ❖ Local courts
 - ❖ Department of Child and Family Services
 - ❖ LA Children's Trust Fund
 - ❖ LA Children's Justice Act Task Force
 - ❖ Casey Family Programs, many other agencies
 - ❖ Parents and families with lived experience with the child welfare system
 - ❖ Community members



MCC PILOT SITES

- Piloted in 4 Louisiana parishes
 - Caddo, East Baton Rouge, Livingston, and Rapides
- Within the 4 parishes, identified 10 zip codes with the most removals of children from their homes and valid investigations of child abuse and neglect.
- Within these zip codes, identified 14 priority neighborhoods with the highest concentration of removals and valid investigations.





MCC STRATEGIES





A community-driven and neighborhood-based approach to strengthening families and preventing child abuse and neglect in the State of Louisiana

MCC Strategies



Spark Community Organizing and Engagement

- MCC will support Neighborhood Teams to:
- Improve communication between community members and agency partners;
 - Remove barriers to quality services;
 - Promote racial and socio-economic equity;
 - Build services and supports.



Connect Families in the Community

- MCC sites will provide a venue for families to:
- Strengthen natural networks of support
 - Establish relationships
 - Learn about services and supports
 - Build community resiliency



Provide Individual Family Support

- MCC sites will offer Solution Based Coaches to:
- Develop a partnership with the family
 - Provide skills based on the family's priorities
 - Notice, support, and celebrate positive change

How We Work Together



Resources



MCC STRATEGIES: Connect Families in the Community



- ❖ MCC sites will provide a venue for families to:
 - Strengthen natural networks of support
 - Establish relationships
 - Learn about service and supports
 - Build community resiliency

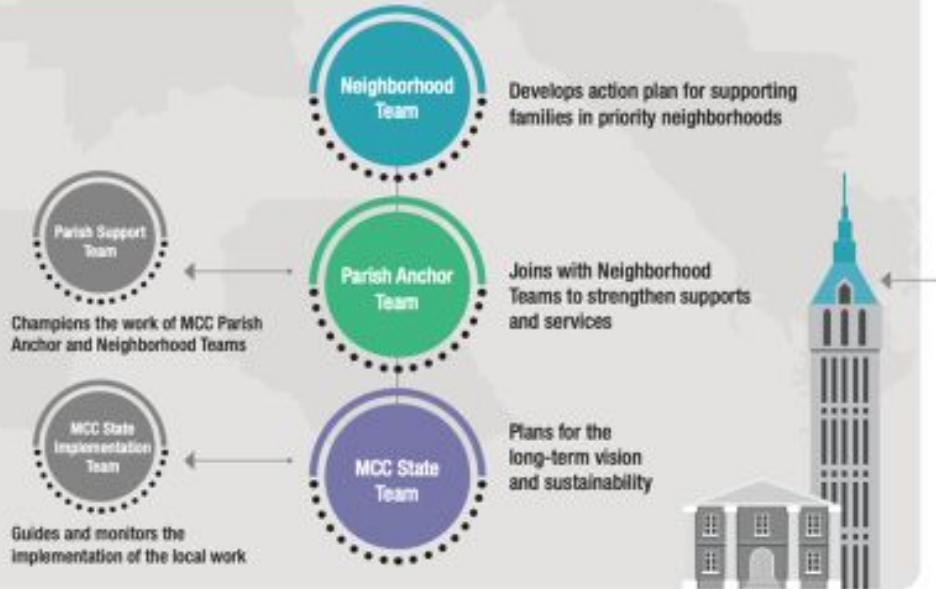
MCC STRATEGIES: Provide Individual Family Support



- ❖ MCC sites will offer Solutions Based Casework to:
 - Develop a partnership with the family
 - Promote skills based on the family's priorities
 - Notice, support and celebrate positive change

MCC COLLABORATIVE STRUCTURE

How We Work Together



MCC RESOURCES





MCC EXPANSION PLANS



MCC EXPANSION PLANS

- ❖ In FY23, DCFS will invest over \$2.3 million in Temporary Assistance to Needy Families (TANF) and Promoting Safe and Stable Families (PSSF) funds to support **nine** local MCC sites
- ❖ Each MCC site will increase staffing from 1 FTE to **3 FTEs** (MCC Parish Director, MCC Connect Coordinator, and MCC Case Manager)
- ❖ Each MCC site will receive **training** on Solutions Based Casework and facilitating Parent/Community Cafes



MCC COMMUNITIES

Calcasieu

- 70601
- 70663

Ouachita

- 71202
- 71203

Terrebonne

- 70360
- 70363
- 70364

Lafayette

- 70501
- 70506

Orleans

- 70114
- 70117
- 70127

Rapides

- 71301
- 71360

East Baton Rouge

- 70802
- 70805
- 70806

Caddo

- 71106
- 71107

Livingston

- 70726
- 70754
- 70795





**PLEASE COMPLETE OUR TWO-MINUTE SURVEY ABOUT
HOW MCC CAN ADVANCE YOUR WORK WITH CHILDREN
AND FAMILIES:**

<https://www.surveymonkey.com/r/WSX8XRY>

FOR MORE INFO ON MCC, CONTACT:

Jenny Forrest: mcc@pelicancenter.org

Amanda Brunson: Amanda.Brunson@la.gov





SUPPORTING ARTICLES

- ❖ <https://www.casey.org/my-community-cares/>
- ❖ <https://cbexpress.acf.hhs.gov/index.cfm?event=website.viewArticles&issueid=209&articleid=5383>
- ❖ <https://cbexpress.acf.hhs.gov/index.cfm?event=website.viewArticles&issueid=215§ionid=2&articleid=5536>
- ❖ <http://louisianafirstfoundation.com/louisiana-fosters-october2021/>
- ❖ <https://www.thetowntalk.com/story/news/2022/01/09/pandemic-brings-struggles-rapides-fight-against-truancy/9124721002/>

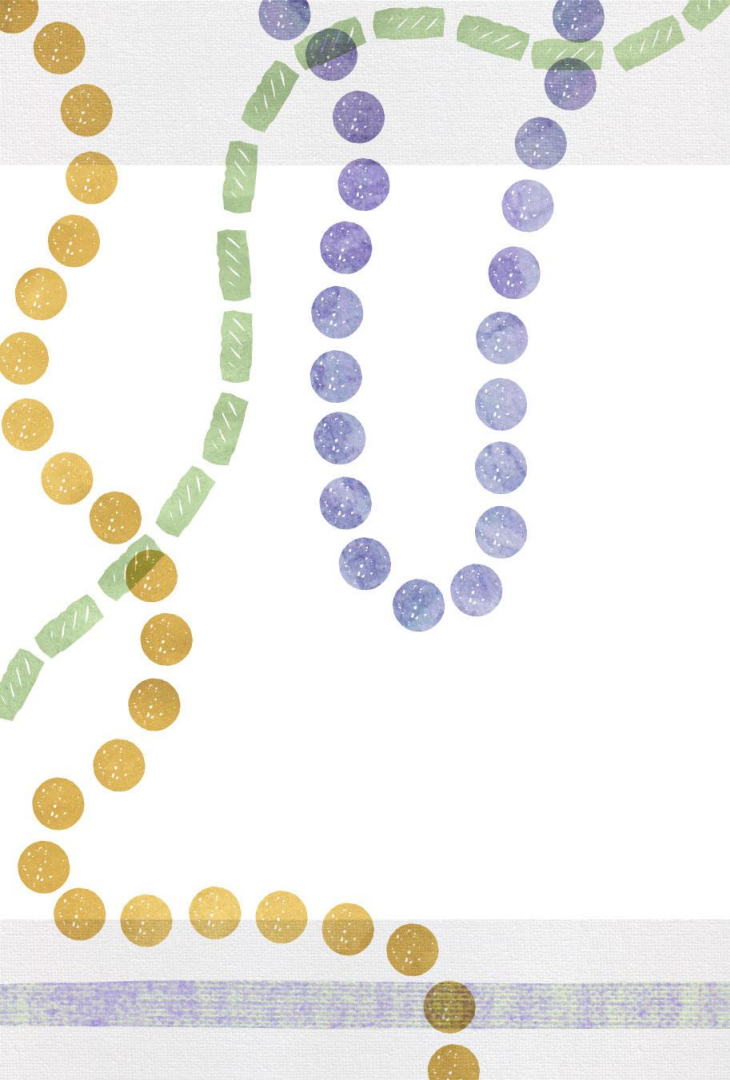


SAFE CHILDREN
STRONG FAMILIES
SUPPORTIVE COMMUNITIES



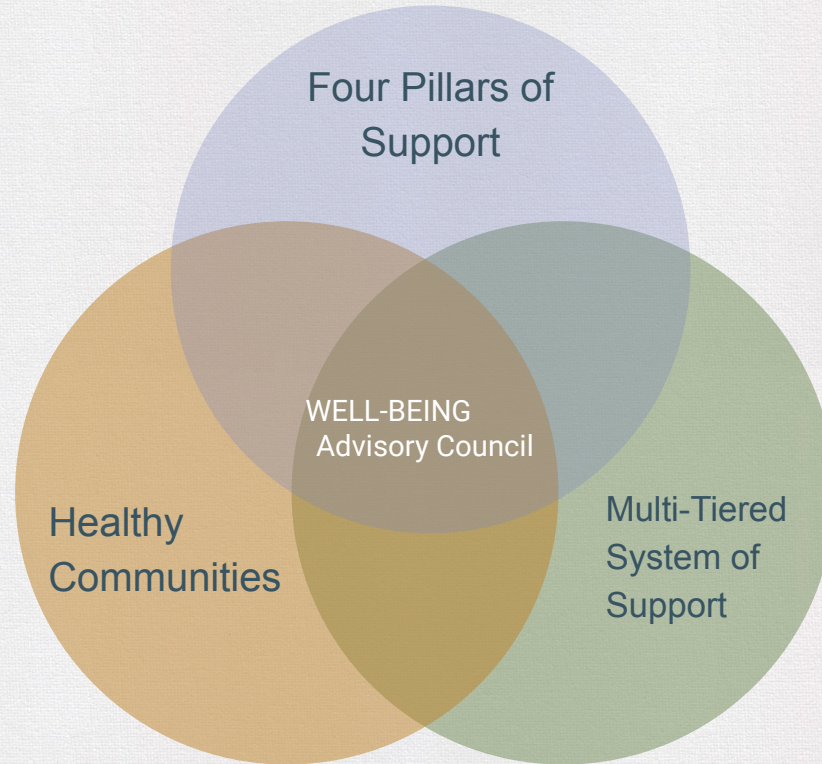
Exit Ticket

1. [Complete the survey](#)
2. Does your system have MCC programs?
3. Are there aspects of this program that could be initiated in your schools?



Reminders

Building a Well-Being Advisory Council



Well-Being Advisory Council Survey

- Open [the survey](#)
- Answer the questions (2)
 - Answer can be, we have not begun to build the council
- Submit

District Support For Ochsner Telehealth

Convenient & Free Virtual Therapy Visits



- Free Sessions
- www.ochsneranywherecare.com
- Create an account using Key Code: LDOE
- On appointment day, use coupon code: TEACH

Please contact rachel.bunch@la.gov with questions.

ACEs training - [17 § 437.2](#)

- [Guidance](#)
- [Louisiana Child Welfare Training Academy](#)
- Course: Introduction to Trauma-Informed Education

Launch 988 - July 16



Louisiana School Safety Summit



SCHOOL
SAFETY
SUMMIT

AUGUST 4, 2022



RAISING CANE'S RIVER CENTER | BATON ROUGE, LA

- Save the date: August 4, 2022; Baton Rouge, LA
- [Registration](#) is currently open.
- Please email healthyschools@la.gov with questions.

Helpful Information

Schedules, access links and information for the Department's webinars can be found in the [LDOE Weekly Newsletter](#) and [School System Support Calendar](#).

Please reach out to the following contacts with questions:



byron.hurst@la.gov	General questions about well-being
rachel.bunch@la.gov	Well-Being and Urgent Intervention Required - Discipline (UIR-D) - PBIS
levillia.moore@la.gov	AWARE 2 and Louisiana School Social Work Grant
michael.comeaux@la.gov	Health and PE, School-Based Medicaid, Transportation, Nursing, Suicide and Bullying Prevention, Healthy Communities
stephen.guccione@la.gov	Act 1801, WSCC model, Professional Development Well-Being Advisory Council
elizabeth.duncan@la.gov	Medicaid
Erica.Gilliam@la.gov	Well-Being Advisory Councils