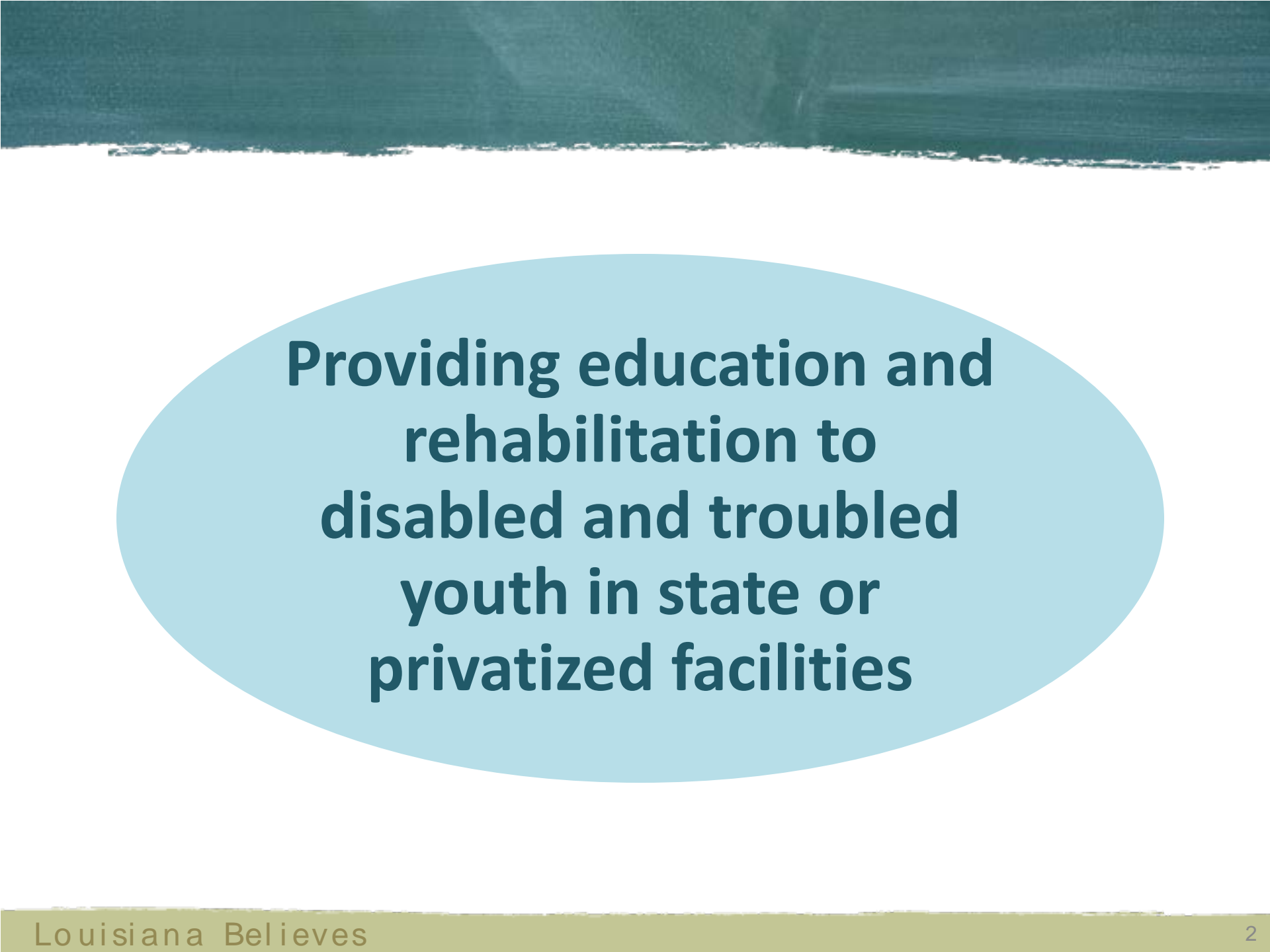


Louisiana Believes

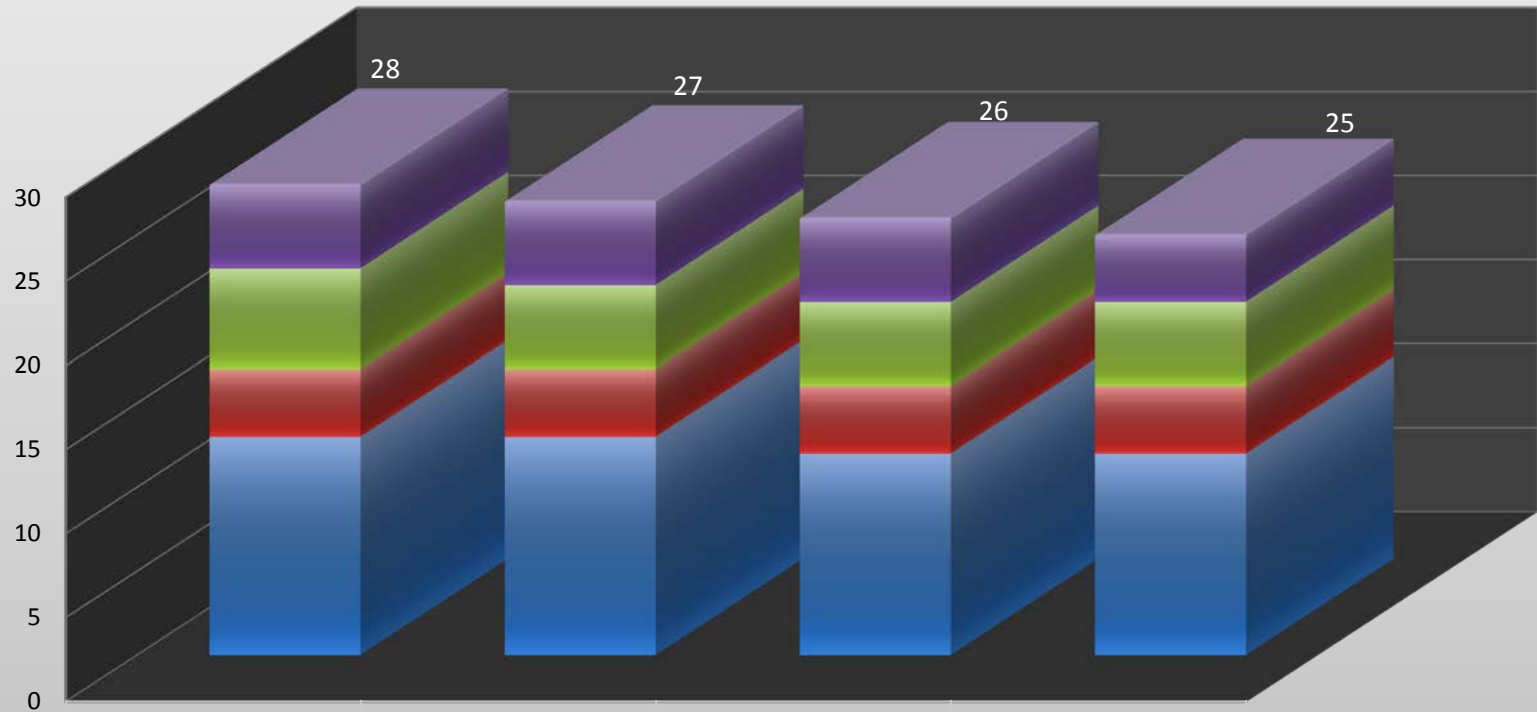
Special School District





**Providing education and
rehabilitation to
disabled and troubled
youth in state or
privatized facilities**

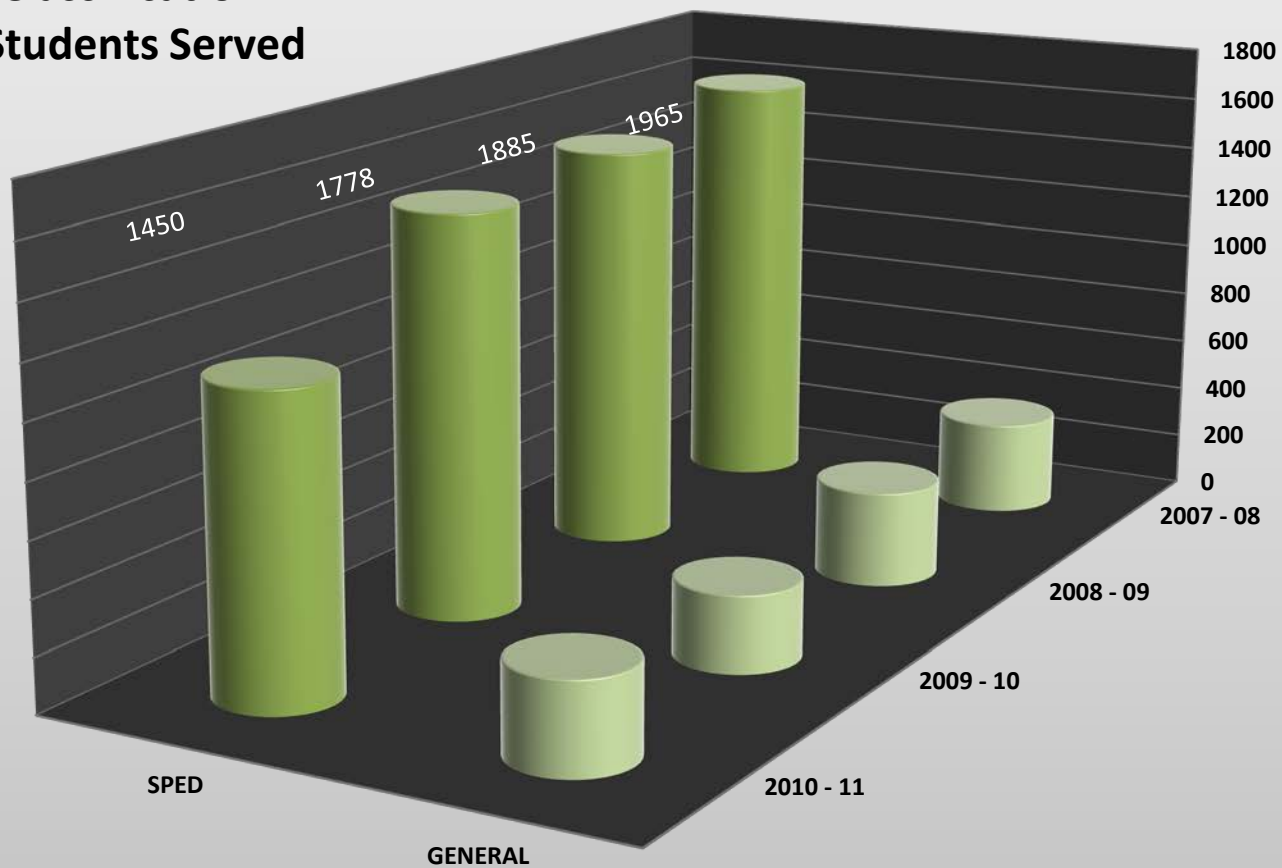
Special School District Programs



	2007-08	2008-09	2009-10	2010-11
OBH	5	5	5	4
OCDD	6	5	5	5
OJJ	4	4	4	4
DOC	13	13	12	12

Brentwood - April 2012

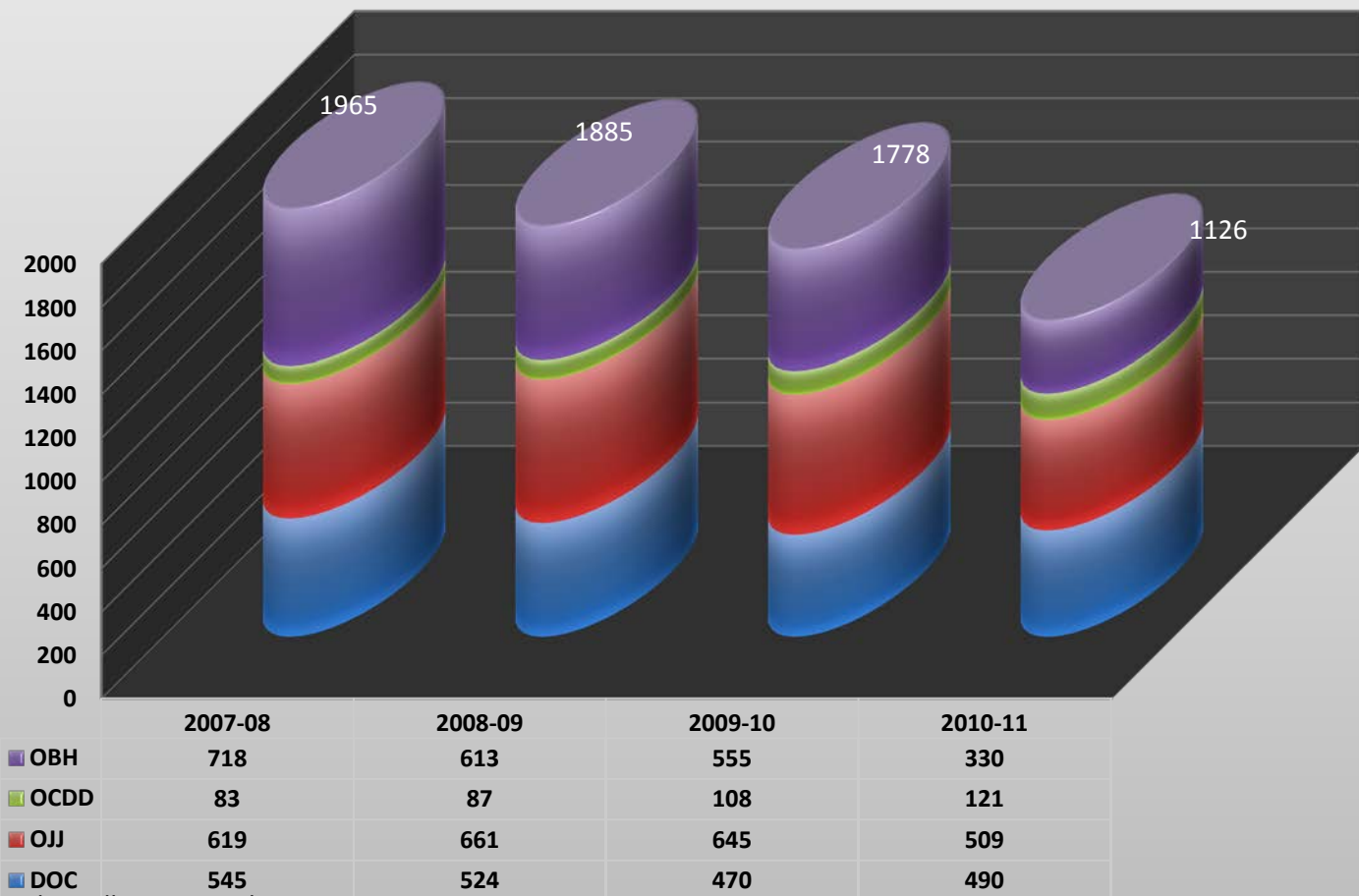
Special School Programs Educational Classification Number of Students Served



	2007 - 08	2008 - 09	2009 - 10	2010 - 11
SPED	1611	1527	1494	1117
GENERAL	354	358	284	333

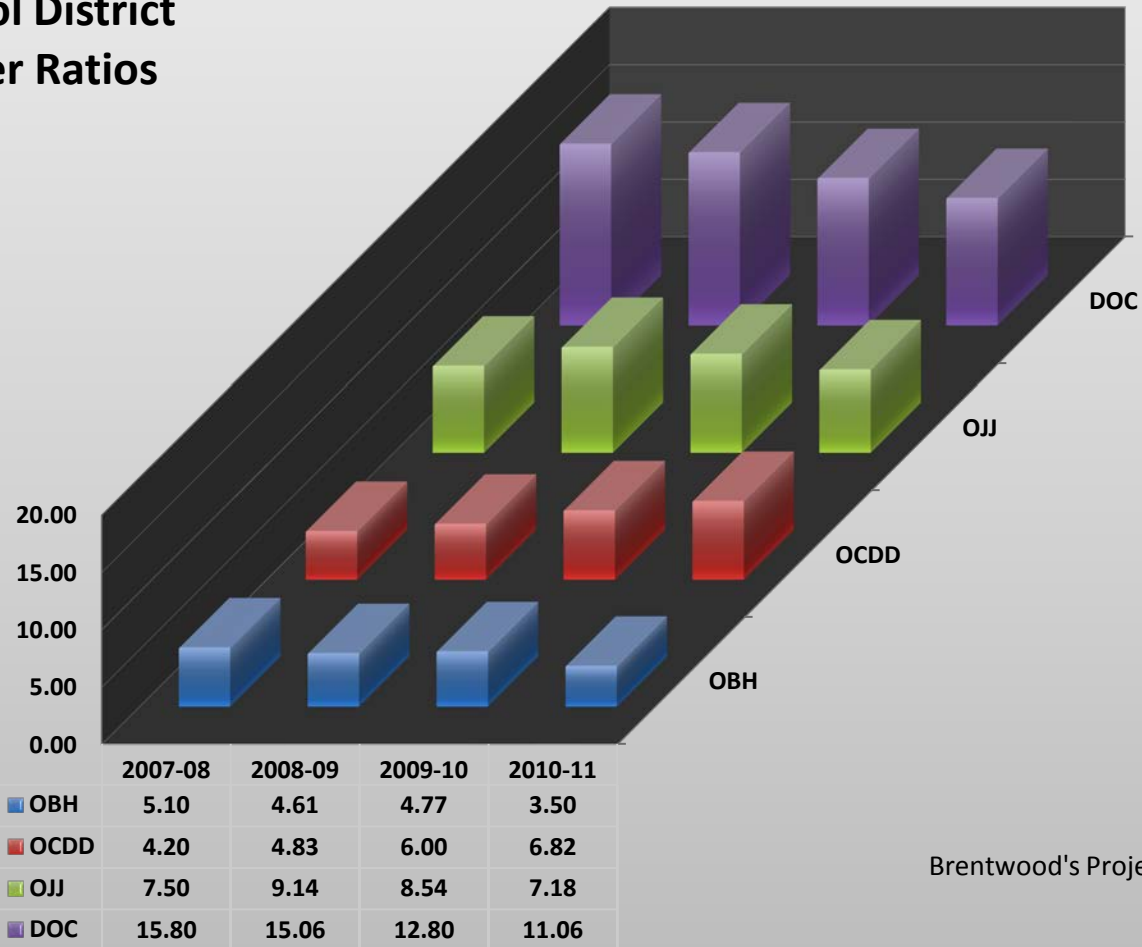
Brentwood's Projected Counts - April 2012: 75

**Special School District
Total Number of Students Served
Department of Corrections, Office of Behavioral Health, Office of Citizens for the Developmentally Disabled & the
Office of Juvenile Justice**



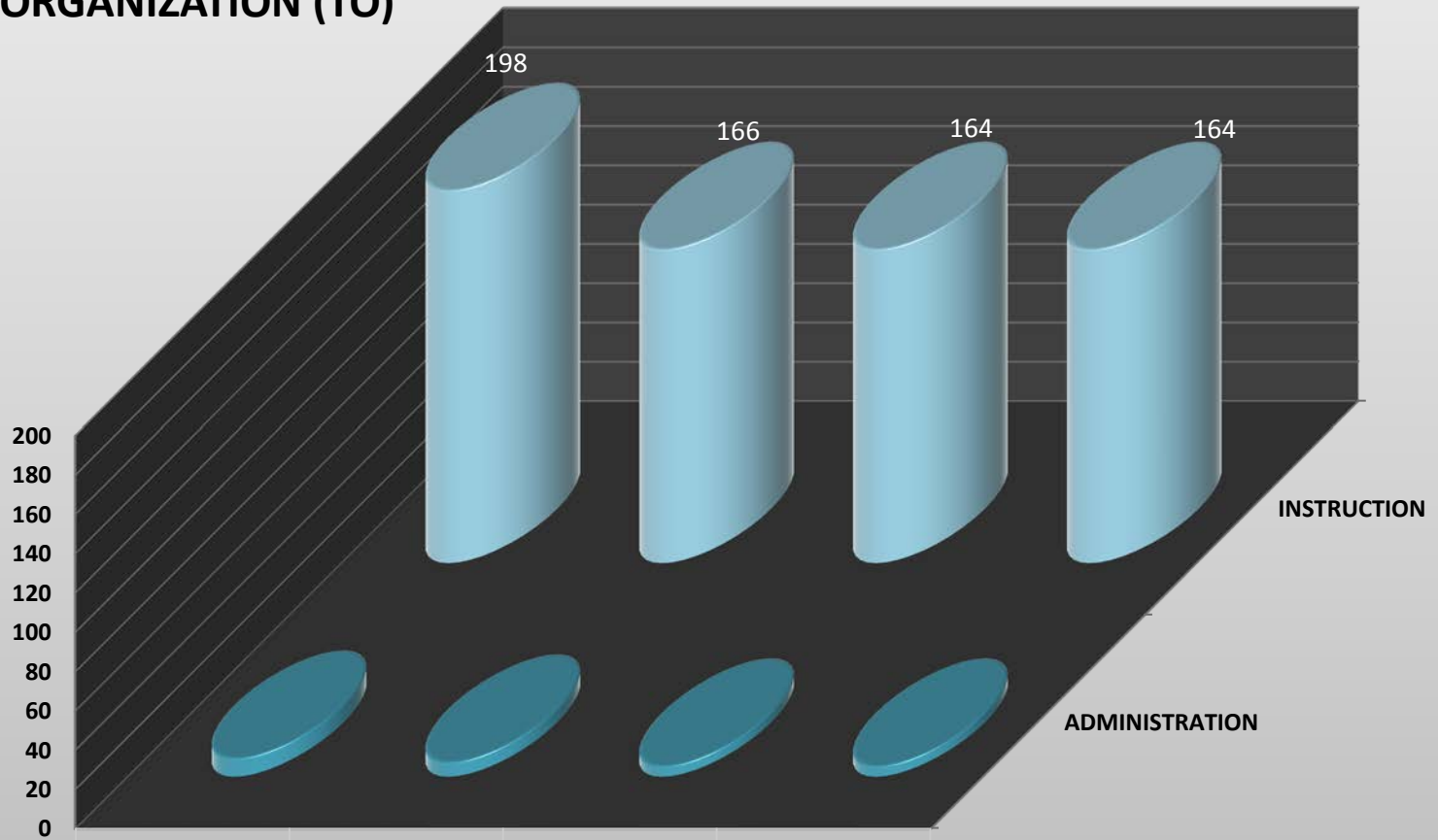
Brentwood's Projected Enrollment - April 2012: 75

Special School District Pupil Teacher Ratios



Brentwood's Projected Pupil Teacher

SPECIAL SCHOOL DISTRICT TABLE OF ORGANIZATION (TO)



■ ADMINISTRATION

■ INSTRUCTION

FY 2008

FY 2009

FY 2010

FY 2011

9

7

5

5

189

159

159

159



Special School Programs

Provides Educational Services in Four Programs

- ❖ Citizens with Developmental Disabilities
- ❖ Behavioral and Mental Health
- ❖ Juvenile Centers for Youth
- ❖ Adult Corrections

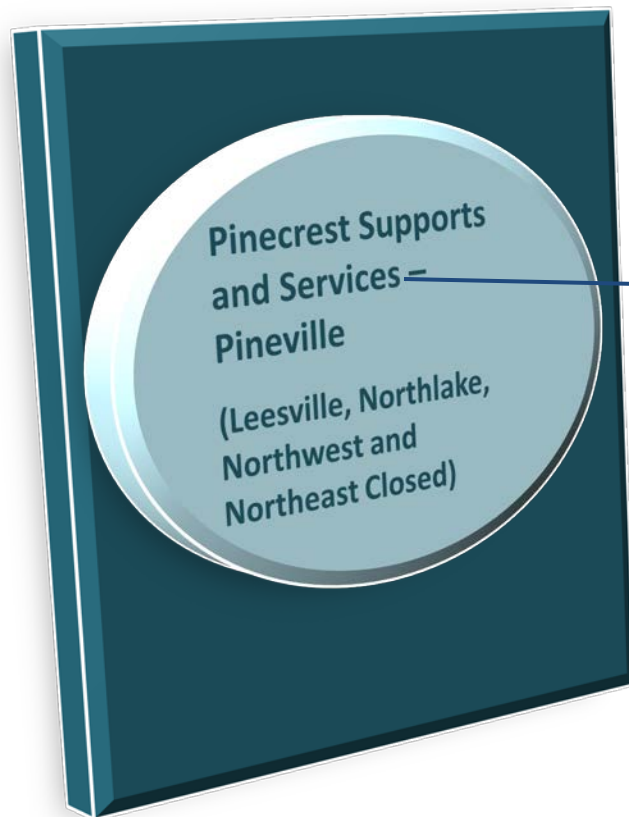
SSD Developmental Centers



- ❖ A program within a residential facility
- ❖ Student counts increased to 80+
- ❖ Students with developmental delays
 - Autism Spectrum Disorders
 - Behavioral Disorders – many leading to adjudication
 - Cognitive Limitations – preventing placement in juvenile facilities
- ❖ Students require
 - Close supervision
 - Educational services in their home setting, when removed from the school
 - Instruction individually prepared and presented
 - Specialized classes for autistic students
 - Age-appropriate instruction



SSD Developmental Centers



SSD Behavioral Health Facilities

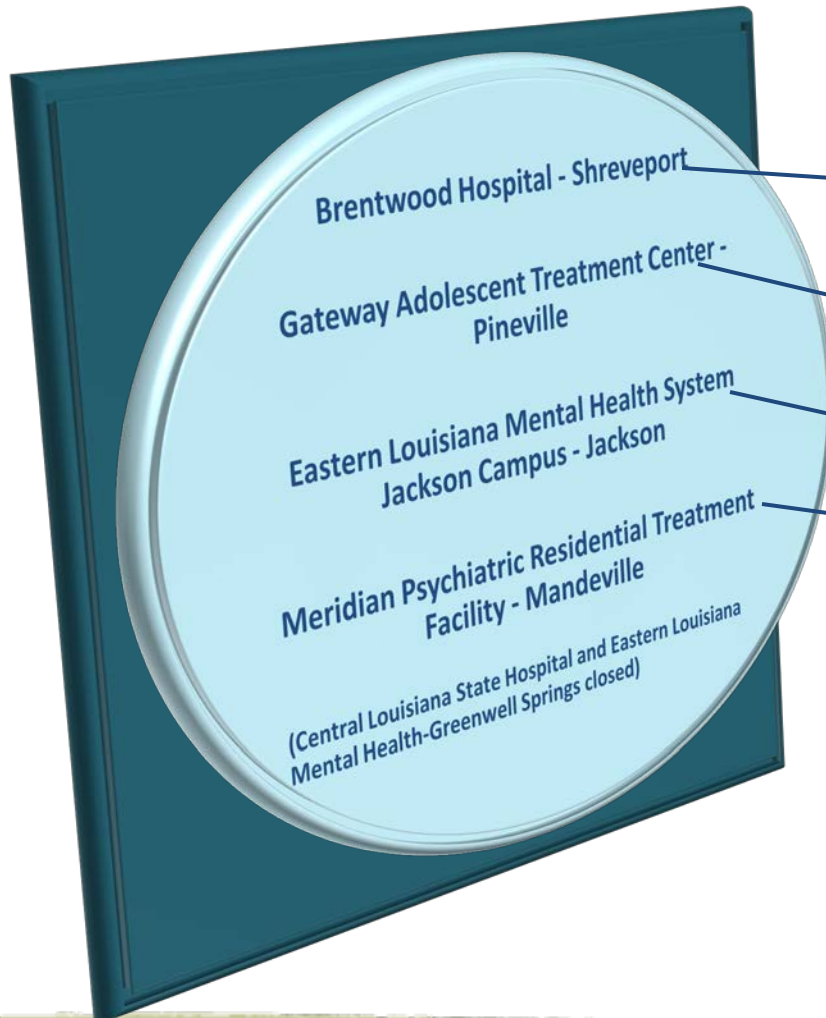


Students are characterized as:

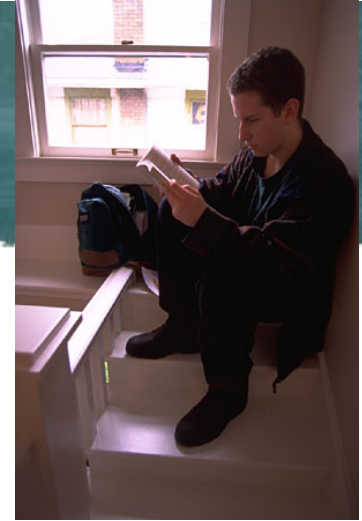
- Personality Disorder
- Severe Conduct Disorder
- Serious Depression/Suicidal
- Psychotic
- Schizophrenic
- Addictive Behaviors
- Basic premise for hospitalization is their documented danger to self and/or others



SSD Behavioral Health Facilities



SSP Youth Centers



- **Four Facilities - Baton Rouge, Bridge City, Monroe & Alexandria**
- **Special Education services in all four**
- **Gifted and Talented services as needed**
- **General & Special Education services in Alexandria**
- **Pupil Appraisal Services for all facilities**
- **IEP and Transition in all facilities**
- **High-stakes testing in all facilities**



SSP Youth Centers

Swanson Center for Youth – Monroe
Renaissance Home for Youth –
Alexandria
Jetson Center for Youth – Baton
Rouge
Bridge City Center for Youth – Bridge
City



SSP Adult Corrections



- Services to ten adult facilities
- Education provided to identified students per federal regulations
- Diagnostic services provided as needed
- Qualified special education teachers in each facility
- Services are provided to young adults through the age of 25
- Programs have expanded due to notable success

SSD Adult Correctional Sites

- David Wade Correctional Center - Homer
- Winn Correctional - Winnfield
- Avoyelles Correctional - Cottonport
- Louisiana State Penitentiary - Angola
- Dixon Correctional - Jackson
- Rayburn Correctional Institute - Angie
- Allen Correctional Center - Kinder
- LA Correctional Institute/Women - St. Gabriel
- Hunt Correctional Center - St. Gabriel
(Phelps, Forcht Wade and Dabadie closed)



SSD Provides Oversight to the Louisiana Special Schools



Louisiana Special Education Center

Vacant, Director

Louisiana School for the Deaf

Dr. Nancy Benham, Director

Louisiana School for the Visually Impaired

Bobby Simpson, Director



SSD CONTACT INFORMATION

Monte Burke, Chief Academic Officer

225-763-5537; monte.burke@la.gov

Allen Walls, Chief Executive Officer

225-757-3244; allen.walls@la.gov

Kevin Lemoine, Superintendent of LA Special Schools

225-757-3200; kevin.lemoine@la.gov

Elizabeth “Liz” Moore, Superintendent

225-763-5515; elizabeth.moore@la.gov

