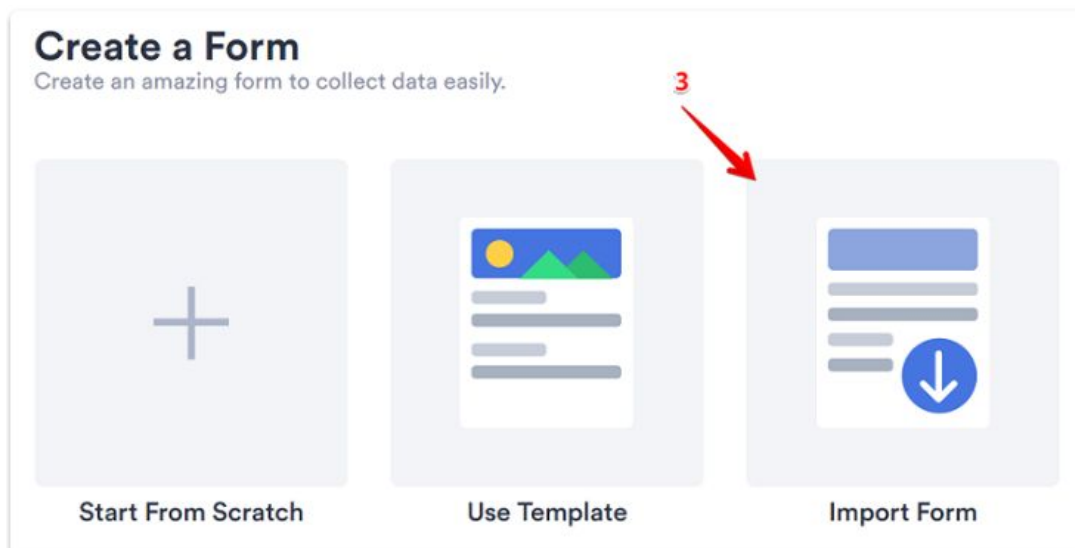


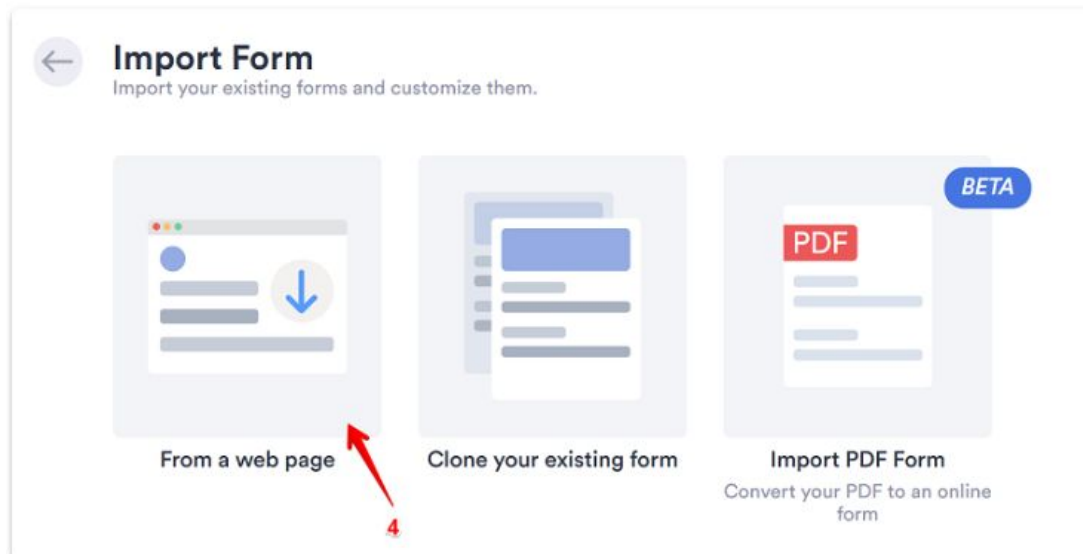
1. Create a JotForm account at [www.jotform.com](http://www.jotform.com)
2. Go to the [MY FORMS](#) page
3. Click the CREATE FORM button



4. Select IMPORT FORM



5. Then, select FROM THE WEB PAGE and paste URL (<https://form.jotform.com/201036227803142>)



6. Click CREATE FORM and the form should be cloned to your account



Enter URL

Enter the form URL to clone

https://www.jotform.com/123456789123456

Create Form

7. You will be redirected to the FORM BUILDER where you can edit the form as needed