

LOUISIANA DEPARTMENT OF EDUCATION



---

**Office of Career and College  
Readiness Office Hours  
February 11, 2021**

---



# Office Hours Norms

Participants may submit questions **via the online chat feature**.

Submitting questions via the chat allows CCR the opportunity to not only answer your question while on the call but to also add your question and the answer to our publicly disseminated FAQ document(s).

This will be time for participants to ask questions about any program in the 4 work streams of the Office of Career and College Readiness. Those items are listed in the agenda.



# Career and College Readiness

## **PATHWAY INITIATIVES AND READINESS SUPPORT**

- School Reopening Updates, Advanced Coursework: AP, Dual Enrollment, IB and CLEP Testing

## **FOUNDATIONAL SKILLS**

- Freshmen Academies, Transitional 9th Grade, Counselor Institutes, Professional School Counselor liaison, Individual Graduation Plan, High School Planning Guides, Counselor Newsletter, Pupil Progression Plans, Direct Student Services

## **QUALITY DIPLOMAS**

- Jump Start, Jump Start Convention, Jump Start Summers, Super Summer Institute, CTTIE, Career Development Fund, Quest for Success, Supplemental Course Academy, U.S. Presidential Scholar

## **POST-SECONDARY READINESS**

- Fast Forward, Extension Academy, Diploma Orders, Community Service Diploma Endorsement, April Dunn Jump Start Pathways, Financial Aid Planning, Gifted and Talented Programming, Student of the Year, U.S. Senate Youth Program, Credit Recovery, Course Codes, Proficiency Exams, Transcripts

# Pathway Initiatives and Readiness Support





# Louisiana Department of Health COVID Vaccine Update for School Systems

LDH has been working closely with the public and private sector in making vaccines available at locations in both urban and rural communities within the state. There are still many unknowns about the quantities of vaccines that will come to Louisiana and the timing of those deliveries.

**At this time, each school system should consider devising a vaccine distribution plan in order to ensure that all school systems have equitable access to COVID-19 vaccines and information about the vaccine.**

**In order to be ready when the state reaching Phase 1B, Tier 2 school systems could:**

- 1) Coordinate with a vaccination partner such as a hospital, clinic, pharmacy, Public Health Office, or other entity.
- 2) Identify the total number of vaccinations that will be needed for your school system.
- 3) Regional Medical Health Office

As a courtesy, LDOE will pass your information along to LDH when you have secured a partner and a number of vaccines needed. This information can be shared at [LDOECOVID19support@la.gov](mailto:LDOECOVID19support@la.gov).



# Strong Start Guideline Reminders

## Strong Start Guidelines

- While inside the school facility, all adults and students in **grades 3 through 12** must wear a face covering to the greatest extent possible and practical within the local community context.
- While inside the school facility, students in grades prekindergarten through 2 may wear a face covering.
- Upon arriving at the school facility, each adult and student must be assessed for symptoms of COVID-19, as defined by the CDC. This includes an initial temperature check.
- All other protocols and details are found in the [School Reopening FAQ](#), which is updated on a regular basis.



# Post Vaccination Quarantine Guidance

**Vaccinated persons with an exposure to someone with suspected or confirmed COVID-19 are not required to quarantine if they meet all of the following criteria:**

- Are fully vaccinated (i.e.  $\geq 2$  weeks following receipt of the second dose in a 2-dose series, or  $\geq 2$  weeks following receipt of one dose of a single-dose vaccine)
- Are within 3 months following receipt of the last dose in the series
- Have remained asymptomatic since the current COVID-19 exposure
- LDOE will work with LDH and medical partners to update existing guidance to reflect the new recommendations.



# BinaxNOW Rapid Tests

The Louisiana Department of Health (LDH) has BinaxNOW Rapid Testing kits available upon request for school systems to access.

- If you are in need of a CLIA Waived Certificate Number or a community provider, please email [Arundhati.Bakshi@la.gov](mailto:Arundhati.Bakshi@la.gov)

School systems that would like to request BinaxNOW Rapid Testing kits are encouraged to [complete this survey](#). **All requests will be sent via mail to the address provided.** Additional information can be found in the [LDOE BinaxNOW FAQ Document](#).

Please email [LDOECOVID19support@la.gov](mailto:LDOECOVID19support@la.gov) for any questions.



# CHNOLA Town Hall Updates

Date	Time	Link
February 24, 2021	1-2 PM	Registration link: <a href="https://chnola.zoom.us/webinar/register/WN_V8WEMQdoR5yoMFVEhNVsUw">https://chnola.zoom.us/webinar/register/WN_V8WEMQdoR5yoMFVEhNVsUw</a>



# Early College Credit Opportunities

The Department has released an [informational resource](#) to assist school systems in guiding students and families in selecting college credit opportunities for students. The flyer includes information on the differences between Advanced Placement, Dual Enrollment and CLEP exam credit, including how college credit is obtained, admissions requirements and other relevant information. Please contact [meredith.mcgovern@la.gov](mailto:meredith.mcgovern@la.gov) with further questions.



Early College Credit Opportunities

## STUDENTS CAN EARN FREE COLLEGE CREDIT IN HIGH SCHOOL

WITH ANY OF THE FOLLOWING PROGRAMS

	<a href="#">Advanced Placement</a>	<a href="#">International Baccalaureate</a>	<a href="#">Dual Enrollment</a>	<a href="#">CLEP Exam</a>
College credit is earned through a single exam	✓	✓		✓
College credit is earned through a final course grade.			✓	
A certain test score is required to participate.			✓	
College credit is likely to transfer to a Louisiana public college.	✓	✓	✓	✓
College credit is likely to transfer to out-of-state and highly-competitive colleges.	✓	✓		✓
Students can elect to either claim or not claim the college credit.	✓	✓	✓	✓
Taking these courses will affect a student's high school grade point average.	✓	✓	✓	
Courses have quality points that boost a student's high school grade point average.	✓	✓	✓	
Studies show that students who take these courses do better in college.	✓	✓	✓	

For more information contact: Meredith McGovern, Executive Director Pathway Initiative and Readiness Support-[meredith.mcgovern@la.gov](mailto:meredith.mcgovern@la.gov) [www.louisianabelieves.com](http://www.louisianabelieves.com)

[Advanced Placement](#) Program offering college-level curricula; if student passes national, standardized exam then college credit is earned

[International Baccalaureate](#) Program offered at specific high schools, aiming at a global, intercultural education; if student passes national, standardized exam then college credit is earned

[Dual Enrollment](#) Program offering students college and high school credit simultaneously



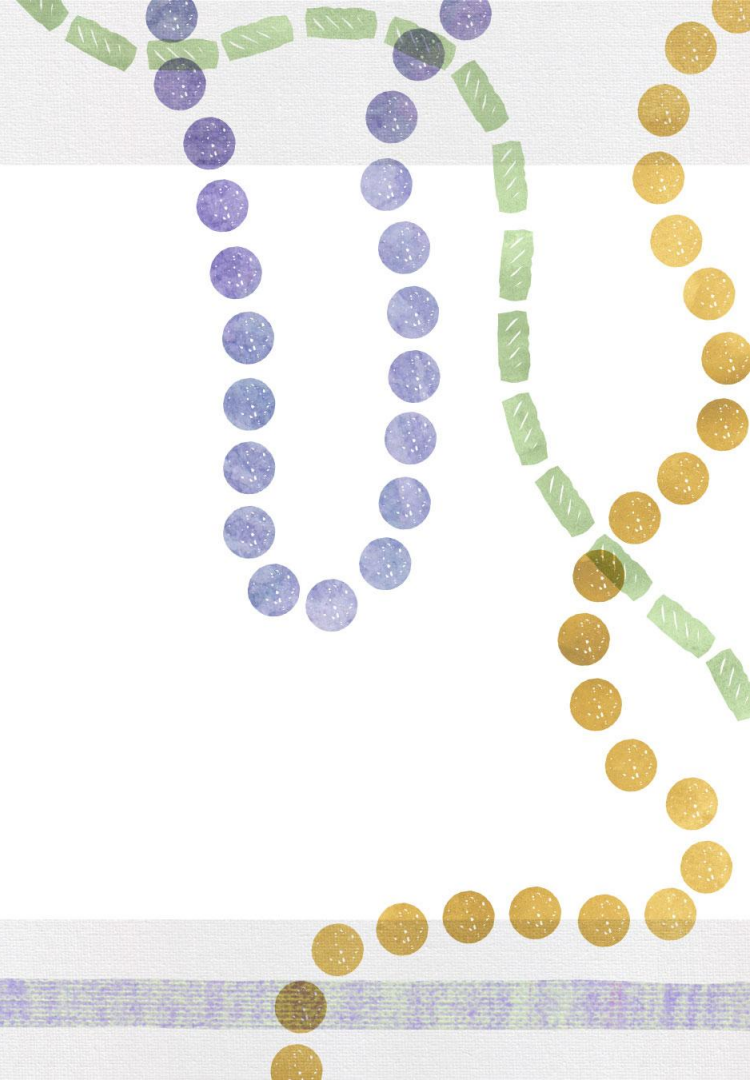
# AP Exam Updates Webinar

The Department is hosting a webinar on [AP Exam Updates](#) on Wednesday, March 3, 2021 at 11 am. This webinar will discuss the new administration dates for AP Exams, along with the technical requirements for offering the digital version of AP exams. Please contact [meredith.mcgovern@la.gov](mailto:meredith.mcgovern@la.gov) for more information.

- Wednesday, March 3, 2021, 11 a.m.
- <https://ldoe.zoom.us/j/97379365051?pwd=OXN0dUh5bUZBWEovSFewM2g4MIFZUT09>
- Meeting ID: 973 7936 5051
- Passcode: 164438
- Phone Number: +1 470 381 2552



# Postsecondary Readiness





# Financial Aid Planning

The FAFSA is the form for state and federal financial aid for postsecondary endeavors. As a requirement of the IGP planning process throughout high school, every senior, as a requirement for graduation, must complete a FAFSA or have a waiver in place.

Waivers will be checked during the verification process and must be present for students to count in the cohort graduation rate.

For assistance with financial aid planning, please contact [ldefinancialaid@la.gov](mailto:ldefinancialaid@la.gov).



# Jump Start Construction Scholars Program

The Louisiana Construction Education Foundation, Louisiana's Community and Technical College System (LCTCS) and the Louisiana Department of Education are collecting [2020-2021 Jump Start Construction Connect Scholars Program Applications](#).

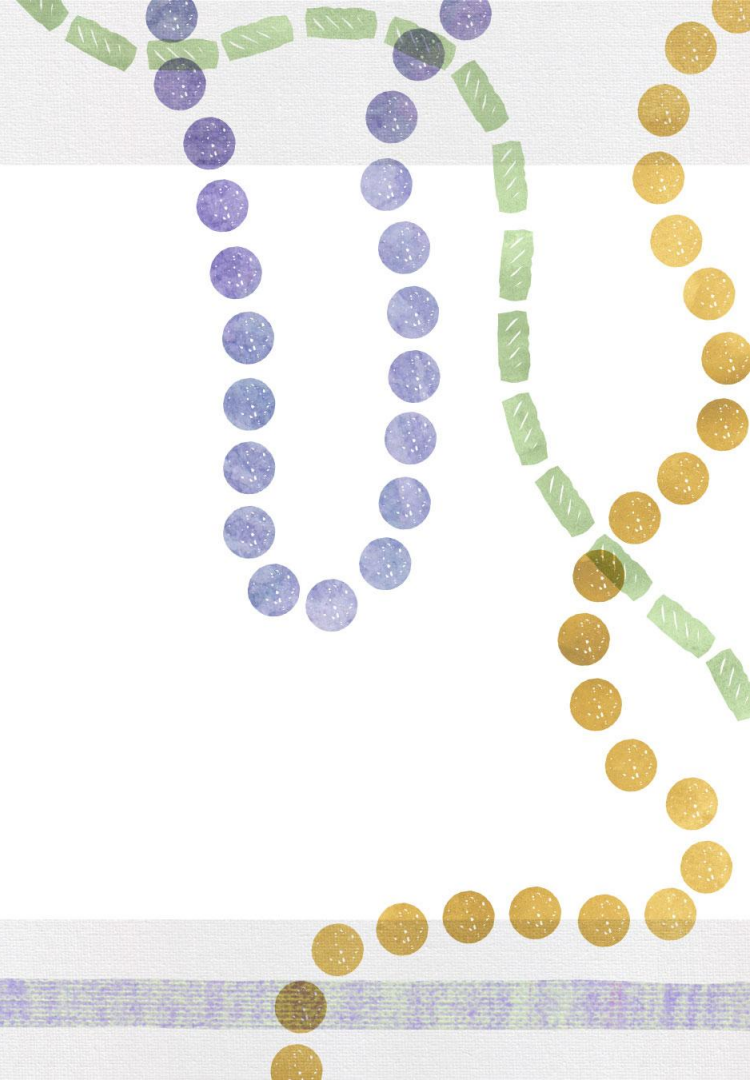
## Scholarship Award

The Jump Start Construction Scholars program will provide up to 40 one-time scholarships in the amount of \$1,000 each to students graduating from high school with a Jump Start Diploma and NCCER Credential planning to enroll in an LCTCS program or an Associated Builders and Contractors training program. The application deadline is March 15.

For more information, please contact [megan.thompson2@la.gov](mailto:megan.thompson2@la.gov).



# Quality Diplomas





# Jump Start Summers

The [Jump Start Summers](#) program will be available to launch summer training sessions for students to earn Carnegie credit aligned to [Fast Forward pathways](#), Jump start 2.0 coursework, statewide basic or advanced credentials, participate in work-based learning and earn a student stipend for participation.

The [application](#) to submit as a prospective or returning Jump Start Summers provider is now open. The application will close on March 5 at 5:00 p.m. The encumbered Supplemental Course Allocation (SCA) dollars can be used for this opportunity.

For more information, please contact [jumpstart@la.gov](mailto:jumpstart@la.gov).



# Jump Start Summers

We will hold an informational webinar about this opportunity.

- **Webinar:** February 22 at 12:00 p.m.
- **Webinar Link:** <https://ldoe.zoom.us/j/97054659910>
- **Webinar Phone Number:** 1-470-381-2552
- **Meeting ID:** 970 5465 9910
- **Meeting Password:** 094760

For more information, please contact [jumpstart@la.gov](mailto:jumpstart@la.gov).



# NCCER Core/ICTP Training

NCCER ICTP/Core teacher certification will be held virtually from March 1-5 and continues March 8-12. The cost is \$600. Perkins and/or CDF funds may be utilized for training costs.

To receive the registration link, documentation of skill of the requested craft is required along with an NCCER card number:

- Resume with industry experience including professional contacts to verify experience in requested craft area(s)
- Diploma with transcript from postsecondary institution in requested craft area(s)
- Registered apprenticeship in requested craft area(s)

Instructors that only need ICTP or Core should reach out for assistance.

For more information, please contact [troy.borne@la.gov](mailto:troy.borne@la.gov).



# Moderated Question and Answer

*Please submit any questions related to the following in the chat box:*

## **PATHWAY INITIATIVES AND READINESS SUPPORT**

- School Reopening Updates, Advanced Coursework: AP, Dual Enrollment, IB and CLEP Testing

## **FOUNDATIONAL SKILLS**

- Freshmen Academies, Transitional 9th Grade, Counselor Institutes, Professional School Counselor liaison, Individual Graduation Plan, High School Planning Guides, Counselor Newsletter, Pupil Progression Plans, Direct Student Services

## **QUALITY DIPLOMAS**

- Jump Start, Jump Start Convention, Super Summer Institute, CTTIE, Career Development Fund, Quest for Success, Supplemental Course Academy, U.S. Presidential Scholar, Carl Perkins

## **POST-SECONDARY READINESS**

- Fast Forward, Extension Academy, Diploma Orders, Community Service Diploma Endorsement, April Dunn Jump Start Pathways, Jump Start Summers, Financial Aid Planning, Gifted and Talented Programming, Student of the Year, U.S. Senate Youth Program, Credit Recovery, Course Codes, Proficiency Exams, Transcripts



# Helpful Information



Schedules, access links and information for the Department’s webinars can be found in the [LDOE Weekly Newsletter](#) and [2020-2021 School System Support Calendar](#).

Please reach out to the following contacts with questions:

<a href="mailto:highschoolacademics@la.gov">highschoolacademics@la.gov</a>	General questions about the office and about graduation requirements
<a href="mailto:ldefinancialaid@la.gov">ldefinancialaid@la.gov</a>	Questions related to the financial aid policy or for assistance with FAFSA completion
<a href="mailto:SCA@la.gov">SCA@la.gov</a>	Questions related to Supplemental Course Academy/Course Choice
<a href="mailto:jumpstart@la.gov">jumpstart@la.gov</a>	Questions related to Jump Start
<a href="mailto:PPP@la.gov">PPP@la.gov</a>	Questions related to pupil progression
<a href="mailto:collegereadiness@la.gov">collegereadiness@la.gov</a>	Questions related to dual enrollment or Advanced Placement