

LOUISIANA DEPARTMENT OF EDUCATION



---

**Office of Career and College  
Readiness Office Hours  
February 4, 2021**

---



# Office Hours Norms

Participants may submit questions **via the online chat feature**.

Submitting questions via the chat allows CCR the opportunity to not only answer your question while on the call but to also add your question and the answer to our publicly disseminated FAQ document(s).

This will be time for participants to ask questions about any program in the 4 work streams of the Office of Career and College Readiness. Those items are listed in the agenda.



# Career and College Readiness

## **PATHWAY INITIATIVES AND READINESS SUPPORT**

- School Reopening Updates, Advanced Coursework: AP, Dual Enrollment, IB and CLEP Testing

## **FOUNDATIONAL SKILLS**

- Freshmen Academies, Transitional 9th Grade, Counselor Institutes, Professional School Counselor liaison, Individual Graduation Plan, High School Planning Guides, Counselor Newsletter, Pupil Progression Plans, Direct Student Services

## **QUALITY DIPLOMAS**

- Jump Start, Jump Start Convention, Jump Start Summers, Super Summer Institute, CTTIE, Career Development Fund, Quest for Success, Supplemental Course Academy, U.S. Presidential Scholar

## **POST-SECONDARY READINESS**

- Fast Forward, Extension Academy, Diploma Orders, Community Service Diploma Endorsement, April Dunn Jump Start Pathways, Financial Aid Planning, Gifted and Talented Programming, Student of the Year, U.S. Senate Youth Program, Credit Recovery, Course Codes, Proficiency Exams, Transcripts

# Pathway Initiatives and Readiness Support





# Louisiana Department of Health COVID Vaccine Update for School Systems

LDH has been working closely with the public and private sector in making vaccines available at locations in both urban and rural communities within the state. There are still many unknowns about the quantities of vaccines that will come to Louisiana and the timing of those deliveries.

**At this time, each school system should consider devising a vaccine distribution plan in order to ensure that all school systems have equitable access to COVID-19 vaccines and information about the vaccine.**

**In order to be ready when the state reaching Phase 1B, Tier 2 school systems could:**

- 1) Coordinate with a vaccination partner such as a hospital, clinic, pharmacy, Public Health Office, or other entity.
- 2) Identify the total number of vaccinations that will be needed for your school system.
- 3) Regional Medical Health Office

As a courtesy, LDOE will pass your information along to LDH when you have secured a partner and a number of vaccines needed. This information can be shared at [LDOECOVID19support@la.gov](mailto:LDOECOVID19support@la.gov).



# Strong Start Guideline Reminders

## Strong Start Guidelines

- While inside the school facility, all adults and students in **grades 3 through 12** must wear a face covering to the greatest extent possible and practical within the local community context.
- While inside the school facility, students in grades prekindergarten through 2 may wear a face covering.
- Upon arriving at the school facility, each adult and student must be assessed for symptoms of COVID-19, as defined by the CDC. This includes an initial temperature check.
- All other protocols and details are found in the [School Reopening FAQ](#), which is updated on a regular basis.



# Strong Start Guidelines Reminders

BAND, VOCAL AND MUSIC		
PHASE 1	PHASE 2	PHASE 3
<p><b>Limitations:</b></p> <ul style="list-style-type: none"> <li>• No indoor activity that involves playing wind instruments (to include all woodwind &amp; brass instruments as well as recorders or any other instrument where the sound is produced by blowing into the instrument)</li> <li>• No vocal singing indoors</li> <li>• Outdoor activity should have appropriate physical distancing measures taken</li> </ul>	<p><b>Limitations:</b></p> <ul style="list-style-type: none"> <li>• No indoor activity that involves playing wind instruments (to include all woodwind &amp; brass instruments as well as recorders or any other instrument where the sound is produced by blowing into the instrument)</li> <li>• No vocal singing indoors</li> <li>• Outdoor activity should have appropriate physical distancing measures taken</li> </ul>	<p><b>Limitations:</b></p> <ul style="list-style-type: none"> <li>• Public health officials recommend that band and vocal music activities be practiced outdoors to the greatest extent possible. When band and vocal music classes are unable to practice outdoors during Phase 3, class may be held indoors in accordance with <a href="#">National Federation of State High School Associations and the National Association for Music Education Guidance</a> which has physical distancing, masking and instrument covering provisions.</li> <li>• String and percussion instruments without singing and with social distancing between band members and audience is permitted.</li> <li>• Outdoor activities including singing and the use of wind instruments is allowable as long as physical distancing measures and maximum group sizes are followed.</li> </ul>



# BinaxNOW Rapid Tests

The Louisiana Department of Health (LDH) has BinaxNOW Rapid Testing kits available upon request for school systems to access.

- If you are in need of a CLIA Waived Certificate Number or a community provider, please email [Arundhati.Bakshi@la.gov](mailto:Arundhati.Bakshi@la.gov)

School systems that would like to request BinaxNOW Rapid Testing kits are encouraged to [complete this survey](#). **All requests will be sent via mail to the address provided.** Additional information can be found in the [LDOE BinaxNOW FAQ Document](#).

Please email [LDOECOVID19support@la.gov](mailto:LDOECOVID19support@la.gov) for any questions.

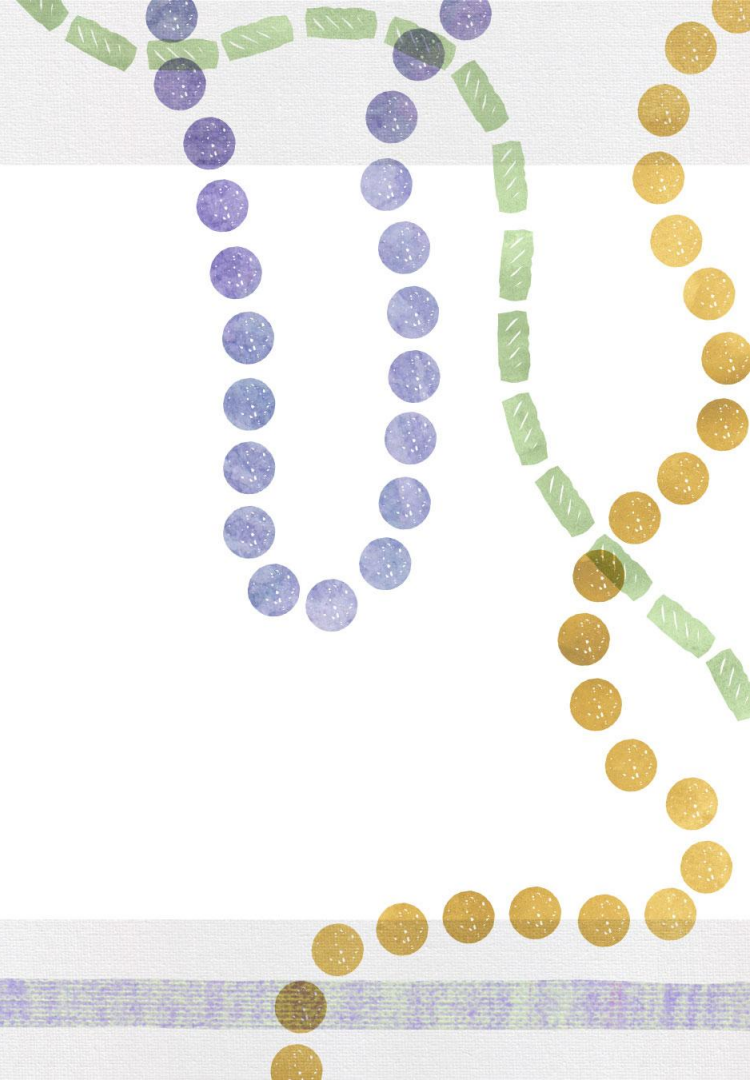


# CHNOLA Town Hall Updates

Date	Time	Link
February 10, 2021	1-2 PM	Registration link: <a href="https://chnola.zoom.us/webinar/register/WN_V8WEMQdoR5yoMFVEhNVsUw">https://chnola.zoom.us/webinar/register/WN_V8WEMQdoR5yoMFVEhNVsUw</a>
February 24, 2021	1-2 PM	Registration link: <a href="https://chnola.zoom.us/webinar/register/WN_V8WEMQdoR5yoMFVEhNVsUw">https://chnola.zoom.us/webinar/register/WN_V8WEMQdoR5yoMFVEhNVsUw</a>



# Postsecondary Readiness





# Fast Forward

The [Fast Forward grant opportunity](#) is intended to fund a lead regional secondary school system in each Regional Labor Market Area to serve as the fiscal agent for a \$50,000 planning grant (\$25,000 Louisiana Department of Education/\$25,000 Board of Regents). Applications are due February 10.

The grant awardee would facilitate the design of a regional Associate Degree and/or fully immersed internship program framework for universal adoption.

These programs will allow students to earn either a Jump Start TOPS Tech Career Diploma or a TOPS University Diploma while dually earning an associate degree or participating in a Louisiana Workforce Commission recognized pre-apprenticeship or apprenticeship that either prepares graduates for career or continuing postsecondary education. Additional [information and resources](#) are available on the LDOE website.

For more information contact [stephanie.marcum@la.gov](mailto:stephanie.marcum@la.gov).



# Financial Aid Planning

As a requirement of the IGP planning process throughout high school, every senior, as a requirement for graduation, must complete a FAFSA or have a waiver in place.

The FAFSA is the form for state and federal financial aid for postsecondary endeavors. We are currently ranked at number 16 nationally in FAFSA completion. Waivers will be checked during the verification process and must be present for students to count in the cohort graduation rate. Currently there have not been any COVID-19 modifications of initial or continuing TOPS eligibility requirements for the 2020-2021 academic year; however, any modifications of this nature would have to come from the Governor and/or legislative action.

For assistance with financial aid planning, please contact [ldefinancialaid@la.gov](mailto:ldefinancialaid@la.gov).

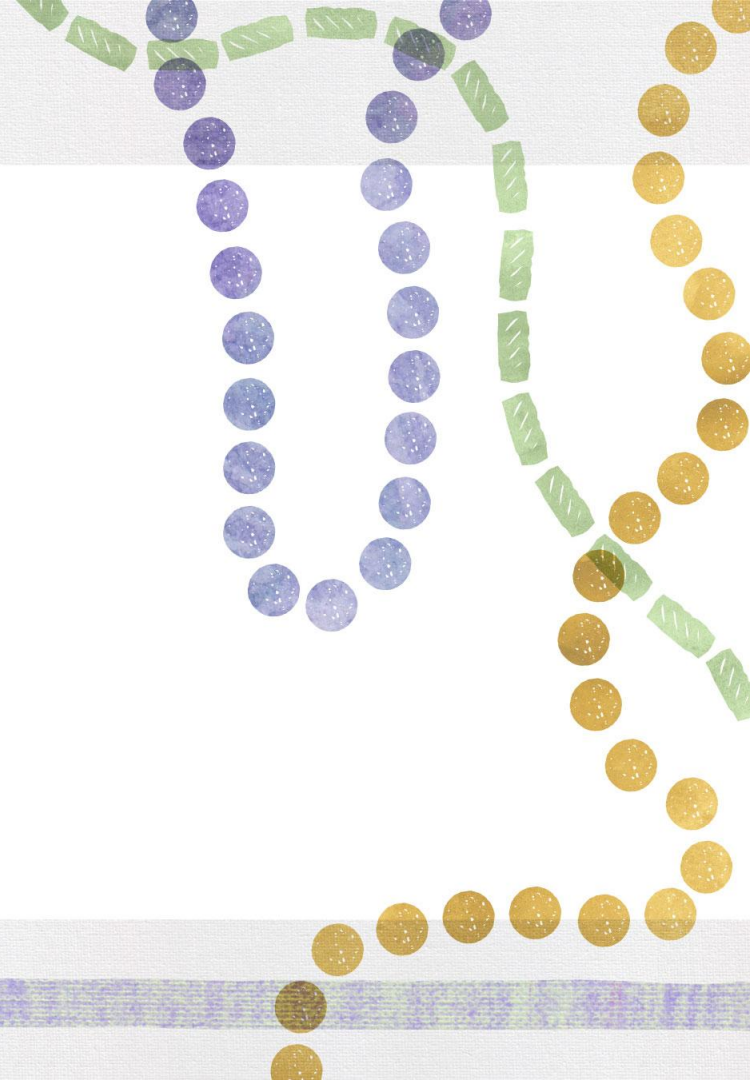


# 2020-2021 High School Diploma and Seal Orders

Please complete the [Diploma and Seal Order Form](#) to request diplomas for 2021 high school graduates. The electronic form should be submitted by Friday, February 5. Only one form should be completed for each school system. The Department will cover the costs of the initial order and distribution.

For more information contact [megan.thompson2@la.gov](mailto:megan.thompson2@la.gov).

# Quality Diplomas





# Jump Start Convention

The Jump Start Convention took place virtually, on January 26 and 27.

The [session presentations](#) are available online.

Additionally, session records will be available on the [LDOE YouTube channel](#).

For more information, contact [jumpstart@la.gov](mailto:jumpstart@la.gov).



## New Team Member

Brittani Williams has joined the Quality Diploma team. As part of her work, she will lead Perkins and Quest for Success. Brittani brings to the team over 10 years of postsecondary student affairs and college attainment experience in the areas of access, transition, student success and career exploration & development. She is passionate about improving student outcomes and supporting equitable opportunities.

[Brittani.Williams2@la.gov](mailto:Brittani.Williams2@la.gov)





# Moderated Question and Answer

*Please submit any questions related to the following in the chat box:*

## **PATHWAY INITIATIVES AND READINESS SUPPORT**

- School Reopening Updates, Advanced Coursework: AP, Dual Enrollment, IB and CLEP Testing

## **FOUNDATIONAL SKILLS**

- Freshmen Academies, Transitional 9th Grade, Counselor Institutes, Professional School Counselor liaison, Individual Graduation Plan, High School Planning Guides, Counselor Newsletter, Pupil Progression Plans, Direct Student Services

## **QUALITY DIPLOMAS**

- Jump Start, Jump Start Convention, Super Summer Institute, CTTIE, Career Development Fund, Quest for Success, Supplemental Course Academy, U.S. Presidential Scholar, Carl Perkins

## **POST-SECONDARY READINESS**

- Fast Forward, Extension Academy, Diploma Orders, Community Service Diploma Endorsement, April Dunn Jump Start Pathways, Jump Start Summers, Financial Aid Planning, Gifted and Talented Programming, Student of the Year, U.S. Senate Youth Program, Credit Recovery, Course Codes, Proficiency Exams, Transcripts



# Helpful Information



Schedules, access links and information for the Department’s webinars can be found in the [LDOE Weekly Newsletter](#) and [2020-2021 School System Support Calendar](#).

Please reach out to the following contacts with questions:

<a href="mailto:highschoolacademics@la.gov">highschoolacademics@la.gov</a>	General questions about the office and about graduation requirements
<a href="mailto:ldefinancialaid@la.gov">ldefinancialaid@la.gov</a>	Questions related to the financial aid policy or for assistance with FAFSA completion
<a href="mailto:SCA@la.gov">SCA@la.gov</a>	Questions related to Supplemental Course Academy/Course Choice
<a href="mailto:jumpstart@la.gov">jumpstart@la.gov</a>	Questions related to Jump Start
<a href="mailto:PPP@la.gov">PPP@la.gov</a>	Questions related to pupil progression
<a href="mailto:collegereadiness@la.gov">collegereadiness@la.gov</a>	Questions related to dual enrollment or Advanced Placement