

Are you ready for some science trivia?

---

# Kahoot!

Please visit [Kahoot.it](https://kahoot.it) to play!



# Teaching Science Through Case Studies





# HELLO!

## I am Lori Ridgdell

Science Teacher, Woodlawn HS

You can find me at [lriddgell@ebrschools.org](mailto:lriddgell@ebrschools.org)



# HELLO!

## I am Karla Kiper

Instructional Technology Facilitator

You can find me at [kkiper11@ebrschools.org](mailto:kkiper11@ebrschools.org)







## We've Got Purpose!

---

To model an **interactive, digital lesson** that **engages students** in the **application of science content** as opposed to passive acquisition of knowledge thereby **incorporating rigor and relevance** to teaching content in science.







## We Are Meeting Standards!

- Standards K-12 Science
- K-12 Louisiana Student Science Standards (2017)
- Connections to ELA & Math K-12 Appendix
- Reading Standards for Literacy in Science and Technical Subjects
- LDOE Technology Readiness Skills
- ISTE Student Standards

What strategies do you use to deepen your students' understanding of your content  
and expand their critical thinking skills?

**Start the presentation to activate live content**

If you see this message in presentation mode, install the add-in or get help at [PollEv.com/app](https://PollEv.com/app)







## Case Study Examples

### Who Killed Yew Google Form?



#### Part I – The Intruder

The intruder entered the kitchen of the upscale restaurant at 2:43am. All was quiet. All was dark.

The intruder moved quickly but he was not in a rush. He knew that the baker would not arrive until 4:00am, as she did most mornings. Most of the meal for the private lunch to be catered later that day had already been prepped. He peered over the stainless steel countertops and into bowls of chopped vegetables, rising dough, and homemade marinades until he found what he was looking for—the dessert prep. Pecan pie was the dessert of choice for the lunch party. He smiled. He could not have chosen a better dessert to carry out his plan!

The intruder reached into his pocket with a gloved hand and produced a small bag with what appeared to be chopped pecans. These were not pecans, however. The bag contained the chopped seeds of a *Taxus baccata* tree.

The intruder swiftly dumped the contents of the bag into the bowl of chopped pecans. He stirred the mixture with his hand. Satisfied that no one would notice his addition of the extra ingredient, the intruder made his way out of the kitchen and into the night.

#### Questions

1. What type of plan could be carried out by adding the seeds of *Taxus baccata* to a pecan pie?

## Murder and Mitosis

- Basic process of mitosis - to solve a murder
- Naturally-occurring poisons
- Students make connections between poisons and chemotherapy











# How familiar are you with Google Forms?

What are Google Forms?

Beginner

Intermediate

Advanced

Unfamiliar with Google Forms!

**Start the presentation to activate live content**

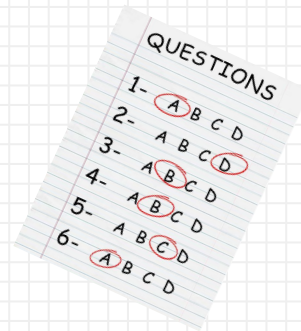
If you see this message in presentation mode, install the add-in or get help at [PollEv.com/app](https://PollEv.com/app)

0%

## What Can I Do with Google Forms?

---

- Create an Event Registration Form - Open House, Parent Night
- Create an Opinion Poll
- Collect Parent, Student, or Volunteer Email Addresses
- Create Quizzes and Classroom Assessments









# Getting Started



← **Untitled form** ☆

add-ons [gear icon] colors [color palette icon] preview [eye icon] settings [gear icon] **SEND** more options [vertical ellipsis icon]

**Typing your title here adds it to the top left.**

QUESTIONS **RESPONSES**

**Untitled form**

Form description

Untitled Question [Paragraph]

Long answer text

Length Minimum character count Number Custom error text

Required [toggle]

- + add a question
- Tt add a title and description
- [image icon] add an image
- [video icon] add a video
- [horizontal lines icon] add a section

more options [vertical ellipsis icon]

## Question Types

---

- Short Answer
- Paragraph
- Multiple Choice
- Checkboxes
- Grid
- Choose from a List
- Scale
- Date
- Time

- Short answer
- Paragraph
- Multiple choice
- Checkboxes
- Dropdown
- File upload
- Linear scale
- Multiple choice grid
- Date
- Time



# Adding Questions

The screenshot shows a form editor interface. At the top, there are two tabs: "QUESTIONS" and "RESPONSES". Below the tabs, the text "Untitled form" is displayed. Underneath, there is a "Form description" field. The main area contains a "Question" field with a horizontal line below it. Below the question field, there are two radio button options: "Option 1" and "Add option or ADD \*OTHER\*". To the right of the question field, there is a dropdown menu for "Multiple choice". At the bottom right, there is a "Required" toggle switch. A vertical toolbar on the right side of the editor contains icons for adding, erasing, and other functions.

**Displays the questions** → QUESTIONS

**View the responses from the live form.** ← RESPONSES

Form description

Question

Option 1

Add option or **ADD \*OTHER\***

Multiple choice

**Do students have to answer the question or not?** → Required



# Create a Question



What is 2 + 2?

Multiple choice

4

5

6

7

Add option or [ADD "OTHER"](#)

Duplicates a question

Deletes the question

Required

Modify the order of answers choices by clicking on the dots and dragging.

Add an image

Duplicates a question

Deletes the question

Show

Description

Go to section based on answer

Shuffle option order

## Go To Section Options

---

Show

Description

Go to section based on answer

Shuffle option order

**Questions can be set to go to a form section based on the student's response...Choose your own adventure!**



# Create Form Sections

What is 2 x 2? \*

4

5

6

7



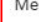
After section 1 **Continue to next section** ▾

Section 2 of 2

## Untitled Section

Description (optional)

- 
- 
- 
- 
- 

-  Duplicate section
-  Delete section
-  Merge with above









# Form Responses

QUESTIONS    **RESPONSES**

0 responses

**Collects the responses into a spreadsheet**

**Turns the form on and off**

Accepting responses

Responses will display within the form

Waiting for responses



# Form Settings: General

**Settings**

GENERAL   PRESENTATION   QUIZZES

Collect email address

Response receipts ?

**Requires sign in:**

Restrict to East Baton Rouge Parish Schools users

Limit to 1 response

Respondents will be required to sign in to Google.

---

**Respondents can:**

Edit after submit

See summary charts and text responses

CANCEL   SAVE



**Good settings for quizzes!**

**Use carefully!**









## Quizzes: The Answer Key

Choose correct answers:

What is 2 x 2? 0 points

4 ✓

5

6

7

**ADD ANSWER FEEDBACK**

**EDIT QUESTION**

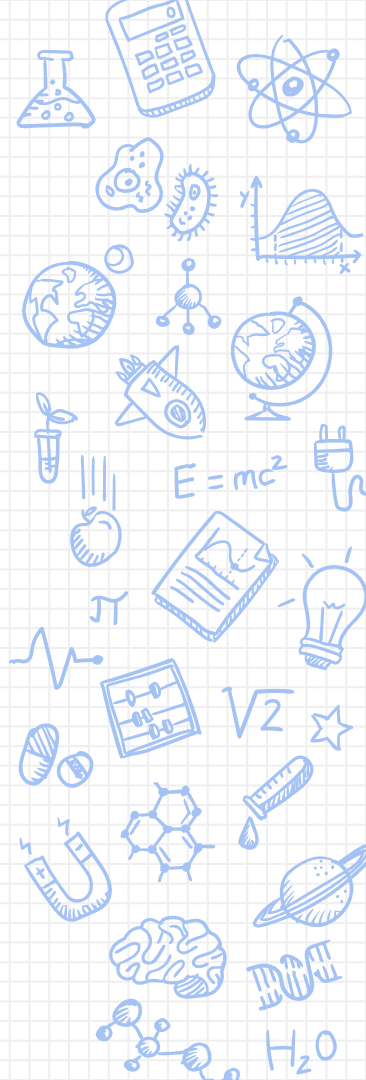
**Add feedback**

INCORRECT ANSWERS CORRECT ANSWERS

Enter feedback

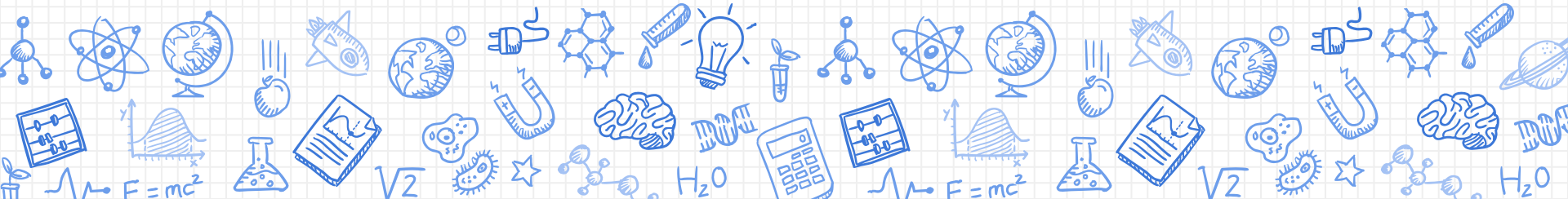
CANCEL SAVE

**Don't forget the feedback!**



# Google Forms

Technology Meets Instructional Strategies







# What teacher task takes up the most of your time?



**Start the presentation to activate live content**

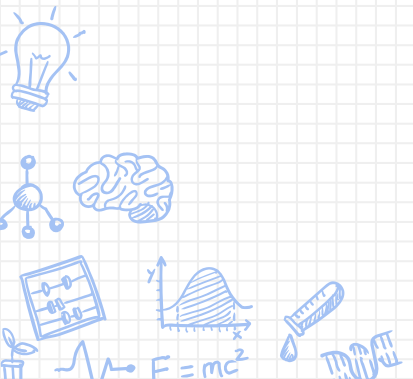
If you see this message in presentation mode, install the add-in or get help at [PollEv.com/app](https://PollEv.com/app)







# The Ultimate Lesson





It you are familiar with Google Forms, what tasks and assignments  
see yourself using a Google Form for?



**Start the presentation to activate live content**

If you see this message in presentation mode, install the add-in or get help at [PollEv.com/app](https://PollEv.com/app)











## Additional Resources for Case Studies

---

### Science Case Study Websites

- [National Center for Case Study Teaching in Science](#)
- [Science Case Network](#)

### Case Study Design Online Resources

- [Case Study Excellence in Innovation](#)

### Instructional Case Study Examples

- [Two Peas in a Pod](#)
- [Who Killed Yew?](#)
- [Hands-on, In-session Creations](#)





# THANKS!

## Any questions?

You can find us at

- ✘ [Iridgdell@ebrschools.org](mailto:Iridgdell@ebrschools.org)
- ✘ [kkiper11@ebrschools.org](mailto:kkiper11@ebrschools.org)
- ✘ [karceneaux@ebrschools.org](mailto:karceneaux@ebrschools.org)